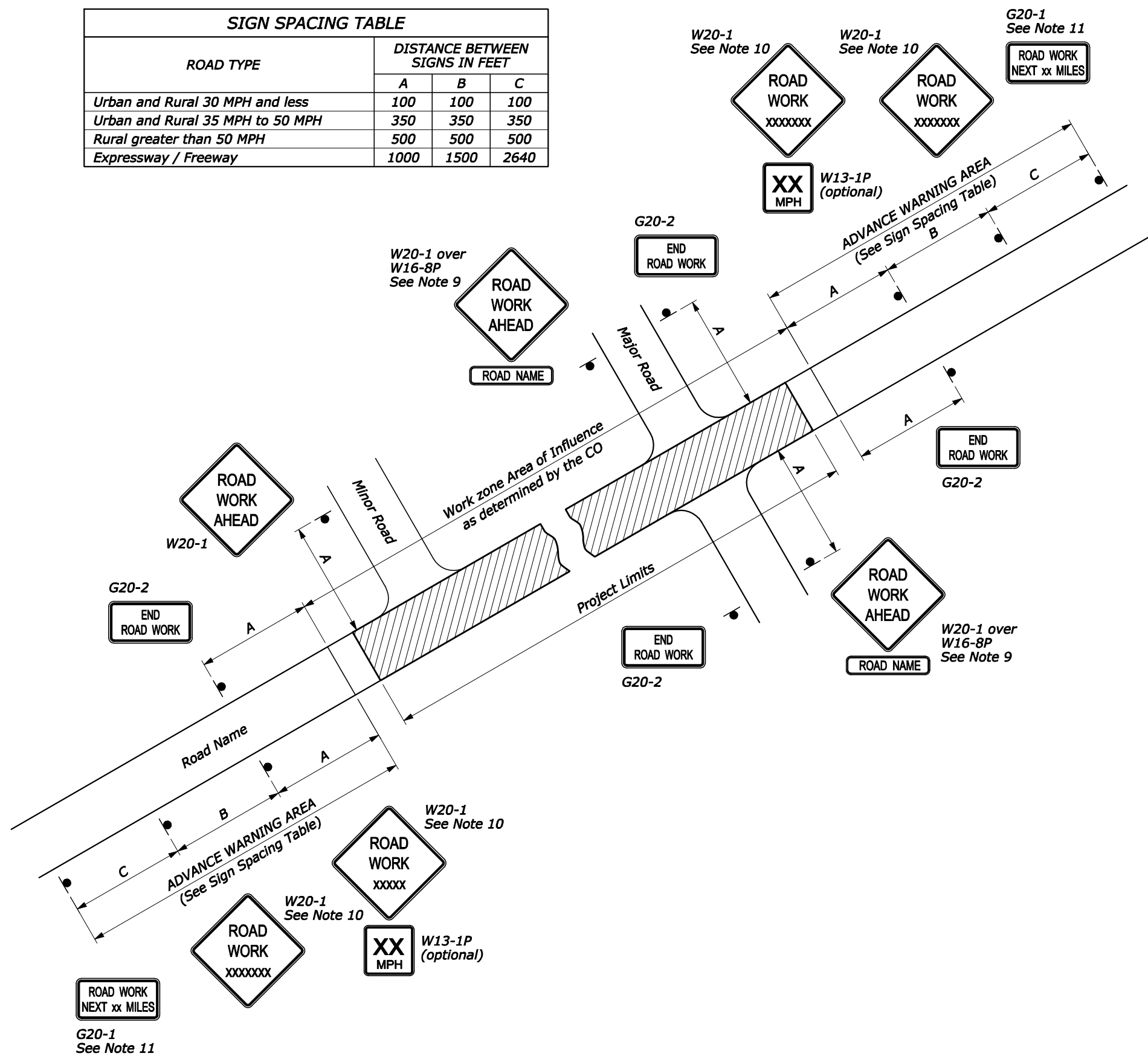


ROAD TYPE	DISTANCE BETWEEN SIGNS IN FEET		
	A	B	C
Urban and Rural 30 MPH and less	100	100	100
Urban and Rural 35 MPH to 50 MPH	350	350	350
Rural greater than 50 MPH	500	500	500
Expressway / Freeway	1000	1500	2640



NOTE:

- Erect all project advance warning signs before starting construction work.
- Not all details shown on the temporary traffic control sheets may be applicable to this project. The Contractor may add or delete information and details in this traffic control plan as necessary to accommodate actual operations.
- Where advance warning signs, placed as shown, interfere with permanent signs, locate the warning signs as determined by the CO for best results. Vary messages as required.
- Additional or different message signs may be required to fit the actual construction conditions.
- Install advisory speed plates under the W20 series warning signs as needed to indicate a maximum recommended speed through the construction area.
- Ensure all sign supports exposed to impact by traffic meet the requirements of NCHRP-350 or MASH for crashworthiness.
- Maintain two-way traffic during all non-work hours except as approved by the CO.
- Do not store traffic control devices along the roadway when not in use. Cover post-mounted signs when not applicable.
- If W20-1 is placed on a roadway other than that on which the actual construction work occurs, include a supplementary plaque indicating the name of the road on which the construction does occur (applies to major roads only).
- The message on the W20-1 signs may be "ROAD WORK AHEAD" or may specify the distance to the work area in feet or in miles. Install an additional W20-1 sign when approach speeds exceed 50 MPH. When used place the two W20-1 signs "B" feet apart according to the Sign Spacing Table.
- For work zones that are 2 miles or more in length, install G20-1 signs at each end of the project. Show the distance on the G20-1 sign to the nearest whole mile.
- If signing on a roadway under a jurisdiction other than the client agency, verify that an encroachment permit has been obtained.
- State standards may be used as an alternative if approved by the CO.
- Refer to the Section 635 of the Special Contract Requirements for allowable retroreflective sheeting types.

25 September 2014 10:02 AM c:\myfiles\pw_production\dms67497\Std.635-1.DRAFT.dgn [USC]

NO SCALE

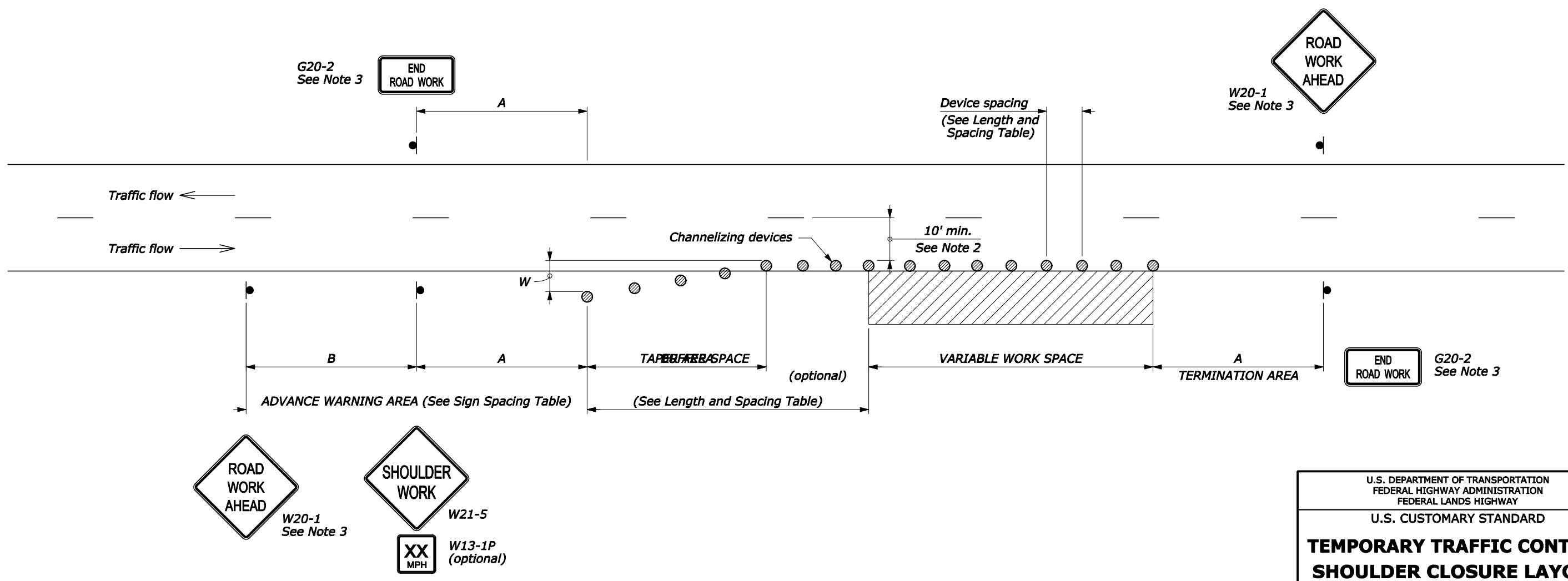
U.S. DEPARTMENT OF TRANSPORTATION FEDERAL HIGHWAY ADMINISTRATION FEDERAL LANDS HIGHWAY	
U.S. CUSTOMARY STANDARD	
TEMPORARY TRAFFIC CONTROL ADVANCE SIGNING	
STANDARD APPROVED FOR USE 6/2005	STANDARD
REVISED: DRAFT: 6/2014	635-1

LENGTH AND SPACING TABLE					
APPROACH SPEED*	MINIMUM TAPER LENGTH**	BUFFER SPACE LENGTH	CHANNELIZING DEVICE		
			TAPER AREA	BUFFER SPACE	WORK SPACE
MPH	FEET	FEET	SPACING IN FEET		
20	Shoulder taper formula: $L = \frac{WS^2}{180}$ for $S \leq 40$ MPH	115	20	40	40
25		155	25	50	50
30	$L = \frac{WS}{3}$ for $S \geq 45$ MPH	200	30	60	60
35		250	35	70	70
40	Where: L = Minimum length of taper W = Width of offset in feet S = Numerical value of posted speed limit or 85 percentile speed prior to work in miles per hour	305	40	80	80
45		360	45	90	90
50		425	50	100	100
55		495	55	110	110
60		570	60	120	120
65		645	65	130	130
70		730	70	140	140

SIGN SPACING TABLE			
ROAD TYPE	DISTANCE BETWEEN SIGNS IN FEET		
	A	B	C
Urban and Rural 30 MPH and less	100	100	100
Urban and Rural 35 MPH to 50 MPH	350	350	350
Rural greater than 50 MPH	500	500	500
Expressway / Freeway	1000	1500	2640

- NOTE:**
- Final location and spacing of signs and devices may be changed to fit field conditions as approved by the CO.
 - For project specific minimum width, refer to Special Contract Requirements, Section 156.
 - If shoulder closure is completely within the project limits, eliminate the "ROAD WORK AHEAD" (W20-1) and "END ROAD WORK" (G20-2) signs.
 - Do not allow equipment, materials, or vehicles to be parked or stored in the buffer space.

* Approach speed based on the regulatory posted speed, not the advisory speed.
 ** Lengthen taper as needed to provide minimum of three channelizing devices in taper at required spacing.



29 September 2014 12:36 PM c:\myfiles\pw_production\dm567497\Std.635-10.DRAFT.dgn [USC]

U.S. DEPARTMENT OF TRANSPORTATION
 FEDERAL HIGHWAY ADMINISTRATION
 FEDERAL LANDS HIGHWAY

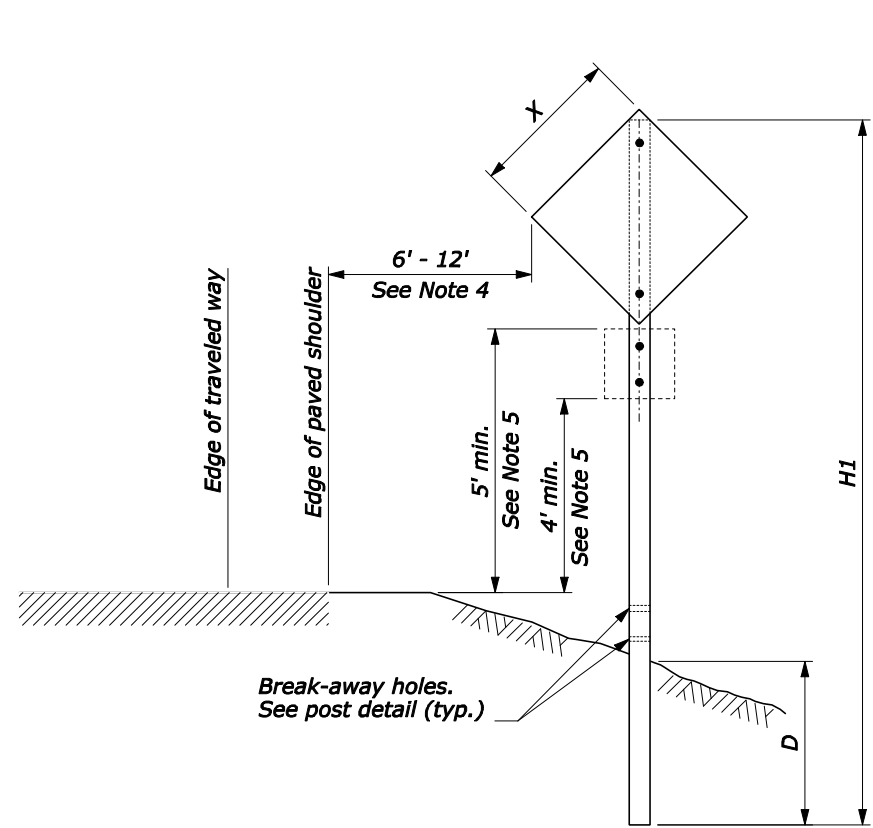
U.S. CUSTOMARY STANDARD

**TEMPORARY TRAFFIC CONTROL
 SHOULDER CLOSURE LAYOUT**

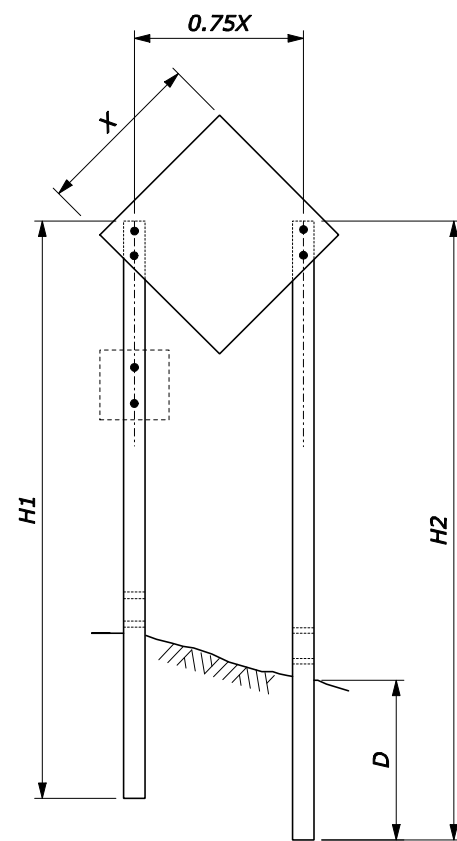
STANDARD APPROVED FOR USE 6/2005
 REVISED: DRAFT: 8/2013

STANDARD
 635-10

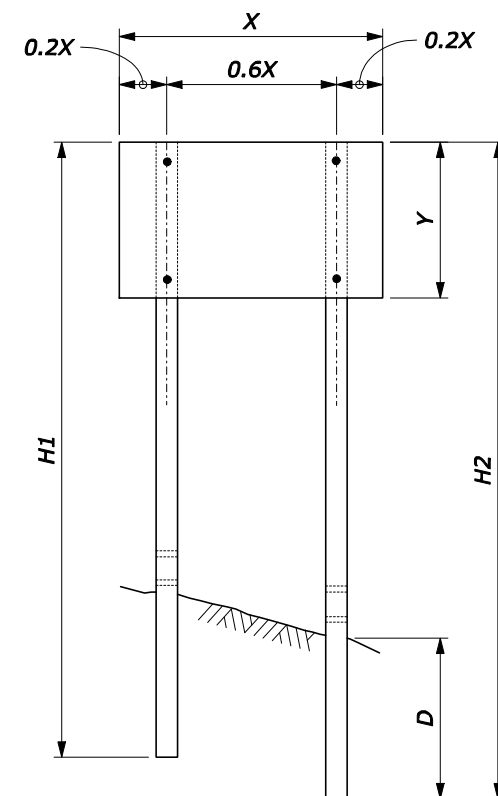
NO SCALE



SINGLE POST SIGN



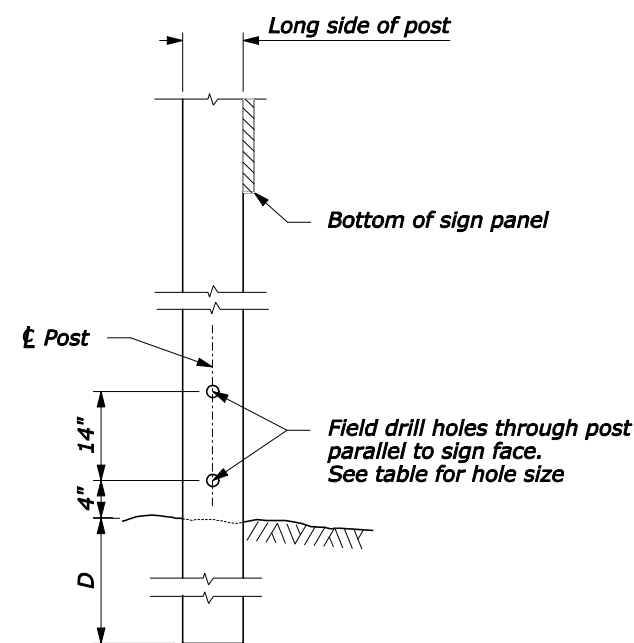
TWO POST SIGN



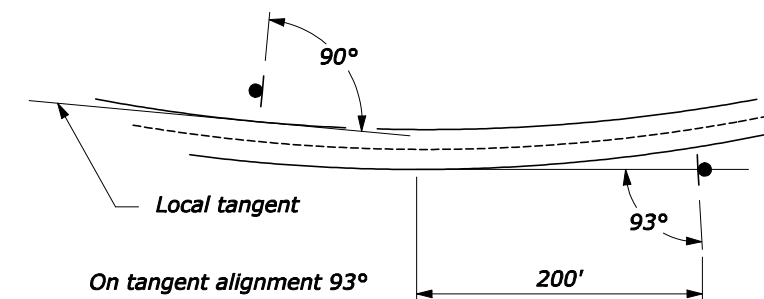
NOTE:

1. Attach sign panels with a minimum of 2 - 1/4" dia. bolts per post.
2. H1 and H2 = Overall post length. Select post lengths to fit field conditions.
3. D = Post embedment depth for average soil conditions.
4. In areas where lateral distance is limited, a minimum lateral offset of 2' may be used. In areas with curbs, a minimum lateral distance of 1' behind the face of the curb may be used.
5. In pedestrian locations, or in areas with obstructed views, use 7' minimum mounting height for main sign and 6' minimum mounting height for secondary sign.
6. Use 7' minimum spacing between posts for sign posts 6" x 6" or larger.
7. State standards may be used as an alternative if approved by the CO.

WOOD POST SELECTION TABLE					
WIDTH "X"	AREA (SQFT)	NUMBER OF POSTS	POST SIZE (INCH)	D (INCH)	HOLE SIZE (INCH)
Diamond ≤ 36" Other Shapes ≤ 48"	< 10	1	4 x 4	36	0
		1	4 x 6	48	1.5
Diamond ≤ 48"	10 - 20	1	6 x 6	48	2
Diamond ≤ 48" Other Shapes ≤ 12'	10 - 20	2	4 x 4	36	0
	20 - 50	2	4 x 6	48	1.5
> 13'	50 - 65	2	6 x 6	48	2
12' - 16'	50 - 65	3	4 x 6	48	1.5
> 17'	65 - 95	4	4 x 6	48	2
> 30'	65 - 95	3	6 x 6	48	2



POST DETAIL



SIGN INSTALLATION ANGLE

NO SCALE

U.S. DEPARTMENT OF TRANSPORTATION FEDERAL HIGHWAY ADMINISTRATION FEDERAL LANDS HIGHWAY	
U.S. CUSTOMARY STANDARD	
TEMPORARY TRAFFIC CONTROL SIGN INSTALLATION WOOD POSTS	
STANDARD APPROVED FOR USE 6/2005	STANDARD
REVISED: DRAFT: 9/2014	635-14