

12/11/2014 9:04:34 PM W:_Civil\3D Projects\2014_027.001 ATKINS Saddle Road West Side Truck Escape Ramps\Roadway\Sheets\B-Summ\HI SR 200 00_SUM-01.dgn

THE FOLLOWING QUANTITIES ARE APPROXIMATE UNLESS NOTED AS A CONTRACT QUANTITY. PAYMENT WILL BE MADE FOR THE ACTUAL QUANTITIES OF WORK PERFORMED AND ACCEPTED OR FOR MATERIALS FURNISHED IN ACCORDANCE WITH THE CONTRACT.

SUMMARY OF QUANTITIES

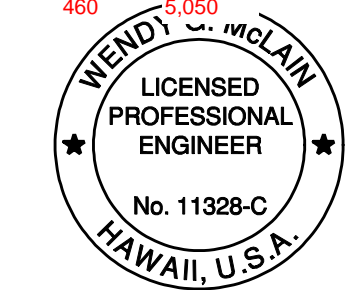
STATE	PROJECT	SHEET NO.	TOTAL SHEETS
HI	HI A-AD 6(8)	B1	B9

A M E N D	LINE ITEM	ITEM NO.	ITEM DESCRIPTION	UNIT	ESTIMATED QUANTITIES							REMARKS AND/OR DETERMINATION OF ESTIMATED QUANTITIES
					TRUCK ESCAPE RAMP 301+00, LT.	ROADSIDE DITCH IMPROVEMENTS 575+00, LT.	ROADSIDE DITCH IMPROVEMENTS 632+00, RT.	MAMALAHOA INTERSECTION SAFETY IMPROVEMENTS	PLAN	ALLOW -ANCE	BID SCHEDULE	
	A0010	15101-0000	MOBILIZATION	LPSM					ALL		ALL	
	A0011	15206-0000	SLOPE, REFERENCE, AND CLEARING AND GRUBBING STAKE	STA	31.0		11.0		42.00		42.00	
	A0012	15210-3000	CENTERLINE, VERIFICATION AND STAKING	STA	31.0	16.0	11.0		58.00		58.00	
⚠	A0013	15215-3000	SURVEY AND STAKING, DRAINAGE STRUCTURE	EACH	16 6				16 6		16 6	
	A0014	15216-2000	SURVEY AND STAKING, GRADE FINISHING STAKES	STA	62.00	32.00	22.00		116.00		116.00	
	A0015	15301-0000	CONTRACTOR QUALITY CONTROL	LPSM					ALL		ALL	
	A0016	15401-0000	CONTRACTOR TESTING	LPSM					ALL		ALL	
⚠	A0017	15705-0100	SOIL EROSION CONTROL, SILT FENCE	LNFT	1,571 1,892	158			1,571 2,050	70.00 110	1,650 2,160	
⚠	A0018	15705-1400	SOIL EROSION CONTROL, SEDIMENT LOG	LNFT	68		75	149	217 292	13 18	230 310	
	A0019	15706-0200	SOIL EROSION CONTROL, CHECK DAM	EACH	42	61	7		110	10	120	
⚠	A0020	15706-1100	SOIL EROSION CONTROL, INLET PROTECTION TYPE A	EACH	15 6			2	17 8	3 2	20 10	
⚠	A0021	15802-0000 15801-0000	WATERING FOR DUST CONTROL	LPSM MGAL					ALL 500		ALL 500	
	A0022	20101-0000	CLEARING AND GRUBBING	ACRE	4.45	1.09	1.31		6.85	1.15	8.00	
	A0023	20304-1000	REMOVAL OF STRUCTURES AND OBSTRUCTIONS	LPSM					ALL		ALL	796 sy 5" depth asphalt pavement, (2) Flashing Beacons, (1) Sign, (1) Type 4 Object Marker.
⚠	A0024	20401-0000	ROADWAY EXCAVATION	CUYD	10,812	1,813	2,799		4,612 15,424	388 576	5,000 16,000	Overexcavation in cuts included. Assumes waste will remain on site.
	A0025	20420-0000	EMBANKMENT CONSTRUCTION	CUYD	10,328				10,328	1,172	11,500	
	A0026	20425-2000	DITCH, EXCAVATION, FURROW DITCH	LNFT			91		91	9	100	
	A0027	20443-0000	BERMS	LNFT	77				77	13	90	
	A0030	25101-1000	PLACED RIPRAP, CLASS 1	CUYD			802		802	88	890	Incl. Earthwork Geotextile, Type IV-E
	A0031	25101-3000	PLACED RIPRAP, CLASS 3	CUYD	187	1,813	128		2,128	222	2,350	Incl. Earthwork Geotextile, Type IV-E
	A0032	30103-0000	AGGREGATE BASE (ARRESTOR MATERIAL)	CUYD	4,692				4,692	308	5,000	
⚠	A0033	30805-0000	BEDDING AND BACKFILL AGGREGATE	CUYD	1,247 1,294				1,247 1,294	133 106	1,400	
⚠	A0034	40301-0000	HOT ASPHALT CONCRETE PAVEMENT	TON	1,514.10 1,143.36				1,514.10 1,143.36	485.90 356.64	2,000 1,500	
⚠	A0035	40920-1000	FOG SEAL EMULSIFIED ASPHALT GRADE CSS-1 OR CSS-1H, SS-1 OR SS-1H	TON	0.74				0.74	0.26	1.00	
	A0035	41103-0000	PRIME COAT	SQYD	3,524				3,524	476	4,000	
⚠	A0035	41201-1000	TACK COAT GRADE CSS-1, CSS-1H, SS-1, OR SS-1H	TON	0.74				0.74	0.26	1.00	
⚠	A0036	60201-0100	4-INCH PIPE CULVERT	LNFT	20 5				20 5	10 3	30 8	
⚠	A0037	60201-0800	24-INCH PIPE CULVERT	LNFT	2,096 1,364				2,096 1,364	114 76	2,210 1,440	
	A0038	60210-0800	END SECTION FOR 24-INCH PIPE CULVERT	EACH	1				1		1	

⚠	A0028	20701-0900	EARTHWORK GEOTEXTILE, TYPE II-C	SQYD	3,797				3,797	383	4,180	
⚠	A0029	20701-1000	EARTHWORK GEOTEXTILE, TYPE III-A	SQYD	4,590				4,590	460	5,050	

See Sheet B3-A for final as built quantities

Amendment A001
⚠ 3/6/15 Contract negotiation revisions and NPDES compliance



THIS WORK WAS PREPARED BY ME OR UNDER MY SUPERVISION.
4/30/2016
SIGNATURE
EXPIRATION DATE OF THE LICENSE

U.S. DEPARTMENT OF TRANSPORTATION
FEDERAL HIGHWAY ADMINISTRATION
CENTRAL FEDERAL LANDS HIGHWAY DIVISION

SUMMARY OF QUANTITIES

SHEET 1 of 3

12/12/2014 10:42:10 AM W:_Civil\3D Projects\2014_027.001 ATKINS Saddle Road West Side Truck Escape Ramps\Roadway\Sheets\B-S\mm\H SR 200 00_SUM-02.dgn

THE FOLLOWING QUANTITIES ARE APPROXIMATE UNLESS NOTED AS A CONTRACT QUANTITY. PAYMENT WILL BE MADE FOR THE ACTUAL QUANTITIES OF WORK PERFORMED AND ACCEPTED OR FOR MATERIALS FURNISHED IN ACCORDANCE WITH THE CONTRACT.

SUMMARY OF QUANTITIES

STATE	PROJECT	SHEET NO.	TOTAL SHEETS
HI	HI A-AD 6(8)	B2	B9

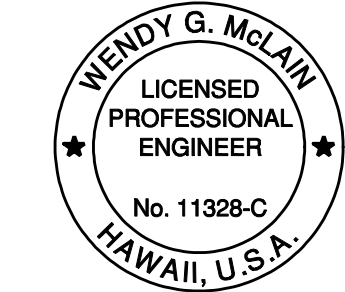
A M E N D	LINE ITEM	ITEM NO.	ITEM DESCRIPTION	UNIT					ESTIMATED QUANTITIES			REMARKS AND/OR DETERMINATION OF ESTIMATED QUANTITIES
					TRUCK ESCAPE RAMP 301+00, LT.	ROADSIDE DITCH IMPROVEMENTS 575+00, LT.	ROADSIDE DITCH IMPROVEMENTS 632+00, RT.	MAMALAHOA INTERSECTION SAFETY IMPROVEMENTS	PLAN	ALLOW -ANCE	BID SCHEDULE	
	A0039	60401-0000	MANHOLE	EACH	1				1		1	
	A0039	60403-0000	INLET (TYPE 1A-9)	EACH	2 1				2 1		2 1	
	A0040	60403-0000	INLET (TYPE 1211214)	EACH	8 4				8 4		8 4	
	A0041	60415-0000	TRENCH DRAIN (20 FT)	EACH	4 1				4 1		4 1	
	A0043	60415-0000	TRENCH DRAIN (23 FT)	EACH	1				1		1	
	A0042	60417-0000	CLEANOUT	EACH	4 1				4 1		4 1	
	A0044	60905-1000 60902-0600	GUTTER, CONCRETE (4' WIDE) CURB AND GUTTER, CONCRETE, 8-INCH DEPTH	LNFT	1,400 1,500				1,400 1,500	50	1,450 1,550	4" depth 4.5' wide, with 4" high curb
	A0045	60905-1000	GUTTER, CONCRETE (6' WIDE)	LNFT	1,650				1,650	100	1,750	6" depth, incl. WWF
	A0047	61701-1200	GUARDRAIL SYSTEM G4, TYPE 2, CLASS A STEEL POSTS	LNFT	46				46	4	50	
	A0048	61702-0600	TERMINAL SECTION, TYPE FLARED	EACH	1				1		1	
	A0049	61707-1000	STRUCTURE TRANSITION RAILING, G4 SYSTEM	LNFT	27				27	3	30	
	A0046	61711-0000	IMPACT ATTENUATOR (INERTIAL BARREL SYSTEM) see item A0146 on sheet B3	EACH	70				70		70	70 @ 2100 lbs
	A0051	61801-0000	CONCRETE BARRIER (TYPE 4A)	LNFT	500				500	50	550	3' height, incl. reinforcing
	A0052	61801-0000	CONCRETE BARRIER (WITH FOOTING)	LNFT	1,650				1,650	100	1,750	6' height, incl. reinforcing
	A0047	62201-0150	DUMP TRUCK, 7 CUBIC YARD MINIMUM CAPACITY	HOURL	20				20		20	As directed by CO
	A0048	62201-0550	BACKHOE LOADER, 6 CUBIC FOOT MINIMUM RATED CAPACITY BUCKET, 24-INCH WIDTH	HOURL	20				20		20	As directed by CO
	A0049	62201-1000	WHEEL LOADER, 4 CUBIC YARD MINIMUM RATED CAPACITY	HOURL	20				20		20	As directed by CO
	A0050	62201-1400	BULLDOZER, 250HP MINIMUM FLYWHEEL POWER	HOURL	20				20		20	As directed by CO
	A0051	62201-2850	MOTOR GRADER, 12 FOOT MINIMUM BLADE	HOURL	20				20		20	As directed by CO
	A0052	62201-3350	HYDRAULIC EXCAVATOR, 1 CUBIC YARD MINIMUM CAPACITY	HOURL	20				20		20	As directed by CO
	A0059	62202-1000	MATERIALS TRANSFER VEHICLE	LPSM					ALL		ALL	As directed by CO
	A0053	62301-0000	GENERAL LABOR	HOURL	24	4	4	8	40		40	As directed by CO
	A0054	62302-1000	SPECIAL LABOR, HIRED TECHNICAL SERVICES	HOURL	8	4	4	4	20		20	As directed by CO
	A0055	62302-1100	SPECIAL LABOR, HIRED SURVEY SERVICES	HOURL	20				20		20	As directed by CO
	A0056	62407-0000	PLACING CONSERVED TOPSOIL	CUYD	1,410		339		1,749	151	1,900	
	A0057	62901-1000	ROLLED EROSION CONTROL PRODUCT, TYPE 3.B	SQYD	4,427	3,973	5,387		13,787	713	14,500	
	A0058	63301-0000	SIGN SYSTEM	EACH	4				4		4	
	A0059	63308-0000	OBJECT MARKER (RETROREFLECTIVE STRIP)	EACH				8	8		8	
	A0060	63308-0000	OBJECT MARKER	EACH	8			4	12		12	

A0043 60901-0400 CURB, CONCRETE, 6-INCH DEPTH LNFT 650 650 25 675

See final as built quantities on sheet B3-A

Amendment A001

3/6/15 Contract negotiation revisions and NPDES compliance



THIS WORK WAS PREPARED BY ME OR UNDER MY SUPERVISION.
SIGNATURE: *Wendy G. McLain* 4/30/2016
EXPIRATION DATE OF THE LICENSE

U.S. DEPARTMENT OF TRANSPORTATION
FEDERAL HIGHWAY ADMINISTRATION
CENTRAL FEDERAL LANDS HIGHWAY DIVISION

SUMMARY OF QUANTITIES

SHEET 2 of 3

As Built S.T. Rhoades Construction, Inc.

12/11/2014 9:05:06 PM W:_Civil\3D Projects\2014_027.001 ATKINS Saddle Road West Side Truck Escape Ramps\Roadway\Sheets\B-Summ\HI SR 200 00_SUM-03.dgn

THE FOLLOWING QUANTITIES ARE APPROXIMATE UNLESS NOTED AS A CONTRACT QUANTITY. PAYMENT WILL BE MADE FOR THE ACTUAL QUANTITIES OF WORK PERFORMED AND ACCEPTED OR FOR MATERIALS FURNISHED IN ACCORDANCE WITH THE CONTRACT.

SUMMARY OF QUANTITIES

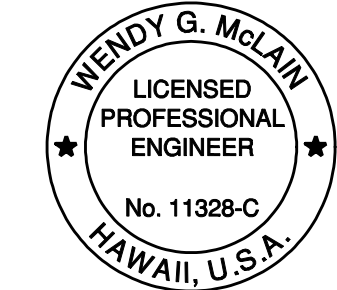
STATE	PROJECT	SHEET NO.	TOTAL SHEETS
HI	HI A-AD 6(8)	B3	B9

A M E N D	LINE ITEM	ITEM NO.	ITEM DESCRIPTION	UNIT					ESTIMATED QUANTITIES			REMARKS AND/OR DETERMINATION OF ESTIMATED QUANTITIES
					TRUCK ESCAPE RAMP 301+00, LT.	ROADSIDE DITCH IMPROVEMENTS 575+00, LT.	ROADSIDE DITCH IMPROVEMENTS 632+00, RT.	MAMALAHOA INTERSECTION SAFETY IMPROVEMENTS	PLAN	ALLOW -ANCE	BID SCHEDULE	
	A0061	63309-0000	DELINEATOR	EACH	54				54		54	
	A0062	63314-0000	RUMBLE STRIP (RAISED)	STA				2	2		2	
	A0063	63316-1000	REMOVE AND RESET SIGN	EACH	4				4		4	
	A0064	63401-0100	PAVEMENT MARKINGS, TYPE A, SOLID	LNFT	6,148				6,148	62	6,210	
	A0065	63406-0000	RAISED PAVEMENT MARKER	EACH	15				15	5	20	
	A0066	63502-0300	TEMPORARY TRAFFIC CONTROL, ADVANCE WARNING ARROW PANEL, TYPE C	EACH	2				2		2	Assumes no sharing of devices between work areas.
	A0067	63502-0700	TEMPORARY TRAFFIC CONTROL, CONE	EACH	273	24	19	30	346		346	Assumes no sharing of devices between work areas.
	A0068	63504-1000	TEMPORARY TRAFFIC CONTROL, CONSTRUCTION SIGN	SQFT	112	40	40	40	232		232	Assumes no sharing of devices between work areas.
	A0069	63602-1000	SYSTEM INSTALLATION, TRAFFIC SIGNAL (LED ENHANCED STOP SIGN)	EACH				2	2		2	Stop Sign with solar powered red flashing LED enhancement, Type XI Sheeting
	A0070	63602-2000	SYSTEM INSTALLATION, LIGHTING	EACH				4	4		4	Solar Powered Street Lighting. Includes foundation.

Items added by modifications

A0071 Slope Concrete SQYD 731
A0129 Type IIIA Geotextile SQYD 4,319
A0132 Agg Base (Arrestor) CUYD 4,300
A0133 Bedding & Backfill CUYD 1,319
A0134 Hot Mix Asphalt TON 1,400
A0146 Inertial Barrels EACH 112

See sheet B3-A for final as built quantities



THIS WORK WAS PREPARED BY ME OR UNDER MY SUPERVISION.
4/30/2016
SIGNATURE EXPIRATION DATE OF THE LICENSE

U.S. DEPARTMENT OF TRANSPORTATION
FEDERAL HIGHWAY ADMINISTRATION
CENTRAL FEDERAL LANDS HIGHWAY DIVISION

SUMMARY OF QUANTITIES

SHEET 3 of 3

STATE	PROJECT	SHEET NO.	TOTAL SHEETS
HI	HI A-AD 6(8)	B3-A	B9

	Original Quantity	Units	As Built Final Qty
A0010 Mobilization	1	LS	100%
A0011 Slope, Reference, and Clearing and Grubbing Stake	42	STA	42.00
A0012 Centerline, Verification and Staking	58	STA	58.00
A0013 Survey and Staking , Drainage Structure	6	STA	6.00
A0014 Survey and STaking, Grade Finishing Stakes	116	STA	116.00
A0015 Contractor Quality Control	1	LS	100%
A0016 Contractor Testing	1	LS	100%
A0017 Soil Erosion Control, Silt fence	2160	LF	552.00
A0018 Soil Erosion Control, Sediment Log	310	LF	50 0.00
A0019 Soil Erosion Control, check Dam	120	EA	16.00
A0020 Soil Erosion Control, Inlet Protection Type A	10	EA	1 0.00
A0021 Watering for Dust Control 500.000 MGAL	500	MGAL	916.00
A0022 Clearing and Grubbing 8.000 ACRE	8	Acre	6.85
A0023 Removal of Structures and Obstructions	1	LS	100%
A0024 Roadway Excavation	16000	CY	15,464.60
A0025 Embankment Construction	11500	CY	10,171.53
A0026 Ditch, Excavation, Furrow Ditch	100	LF	10.00
A0027 Berms	90	LF	150.00
A0028 Earthwork Geotextile, Type II-C	4180	SY	4,531.70
A0029 Earthwork Geotextile, Type III-A	5050	SY	0.00
A0030 Placed Rip Rap, Class 1	890	CY	794.00
A0031 Placed Rip Rap, Class 3	2350	CY	2,105.20
A0032 Aggregate Base (arrestor material)	5000	CY	0.00
A0033 Bedding and Backfill Aggregate	1400	CY	0.00
A0034 Hot Asphalt Concrete Pavement	1400	Ton	0.00
A0035 Prime Coat	4000	SY	4,183.33
A0036 4" Pipe Culvert	8	LF	0.00
A0037 24" Pipe Culvert	1440	LF	1,355.50
A0038 End Section for 24" Pipe Culvert	1	EA	1.00
A0039 Inlet (Type 1A-9)	1	EA	1.00
A0040 Inlet (Type 1211214)	4	EA	4.00
A0041 Trench Drain (20 FT)	1	EA	0.00

	Original Quantity	Units	As Built Final Qty
A0042 Cleanout	1	EA	0.00
A0043 Curb, Concrete, 6-Inch Depth	675	LF	610.00
A0044 Curb & Gutter, Conc 8" Depth	1550	LF	1,540.00
A0045 Gutter, Concrete (6' Wide)	1750	LF	1,647.00
A0046 Impact Attenuator (inertial barrel system)	70	EA	0.00
A0047 Dump Truck, 7 cy minimum capacity	20	Hrs	11.50
A0048 Backhoe Loader, 6 CF minimum	20	Hrs	6.00
A0049 Wheel Loader, 4CY minimum	20	Hrs	3.00
A0050 Bulldozer, 250 HP Minimum Flywheel Power	20	Hrs	0.00
A0051 Motor Grader, 12 foot minimum blade	20	Hrs	0.00
A0052 Hydraulic Excavator, 1 CY minumum capacity	20	Hrs	5.00
A0053 General Labor	40	Hrs	4.00
A0054 Special Labor, Hired Technical Services	20	Hrs	0.00
A0055 Special Labor, Hired Survey Services	20	Hrs	0.00
A0056 Placing Conserved Topsoil	1900	CY	78.69
A0057 Rolled Erosion Control Produ t, type 3.B	14500	SY	9,659.66
A0058 Sign System	4	EA	4.00
A0059 Object Marker (retroreflective strip)	8	EA	12.00
A0060 Object Marker	12	EA	8.00
A0061 Delineator	54	EA	52.00
A0062 Rumble Strip (raised)	2	EA	2.00
A0063 Remove and Reset Sign	4	EA	4.00
A0064 Pavement Markings, Type A Solid	6210	LF	6,644.00
A0065 Raised Pavement Marker	20	EA	20.00
A0066 TTC, Advance Warning Arrow Panel, Type C	2	EA	2.00
A0067 Temporary Traffic Control, Cone	346	EA	502.00
A0068 Temporary Traffic Control , Const Sign	232	SF	279.00
A0069 System Installation, Traffic Sig, LED En Stop Sign	2	EA	2.00
A0070 System Installation, Lighting	4	EA	4 0.00
A0071 Slope Concrete		SY	730.68
A0129 Type III A Geotextile		SY	4,531.70
A0132 Bedding & Backfill (Arrestor Rock)		CY	3,800.11
A0133 Bedding & Backfill Agg		CY	1,245.77
A0134 HMAC		Ton	1,263.97
A0146 Inertial Barrels		EA	112.00

SUMMARY OF QUANTITIES

Sheet 3A of 3

As Built S.T. Rhoades Construction, Inc.

12/11/2014 9:05:06 PM W:_Civil 3D Projects\2014_027_001 ATKINS Saddle Road West Side Truck Escape Ramps Roadway\Sheets\B-Summ\HI SR 200 00_SUM-03.dgn