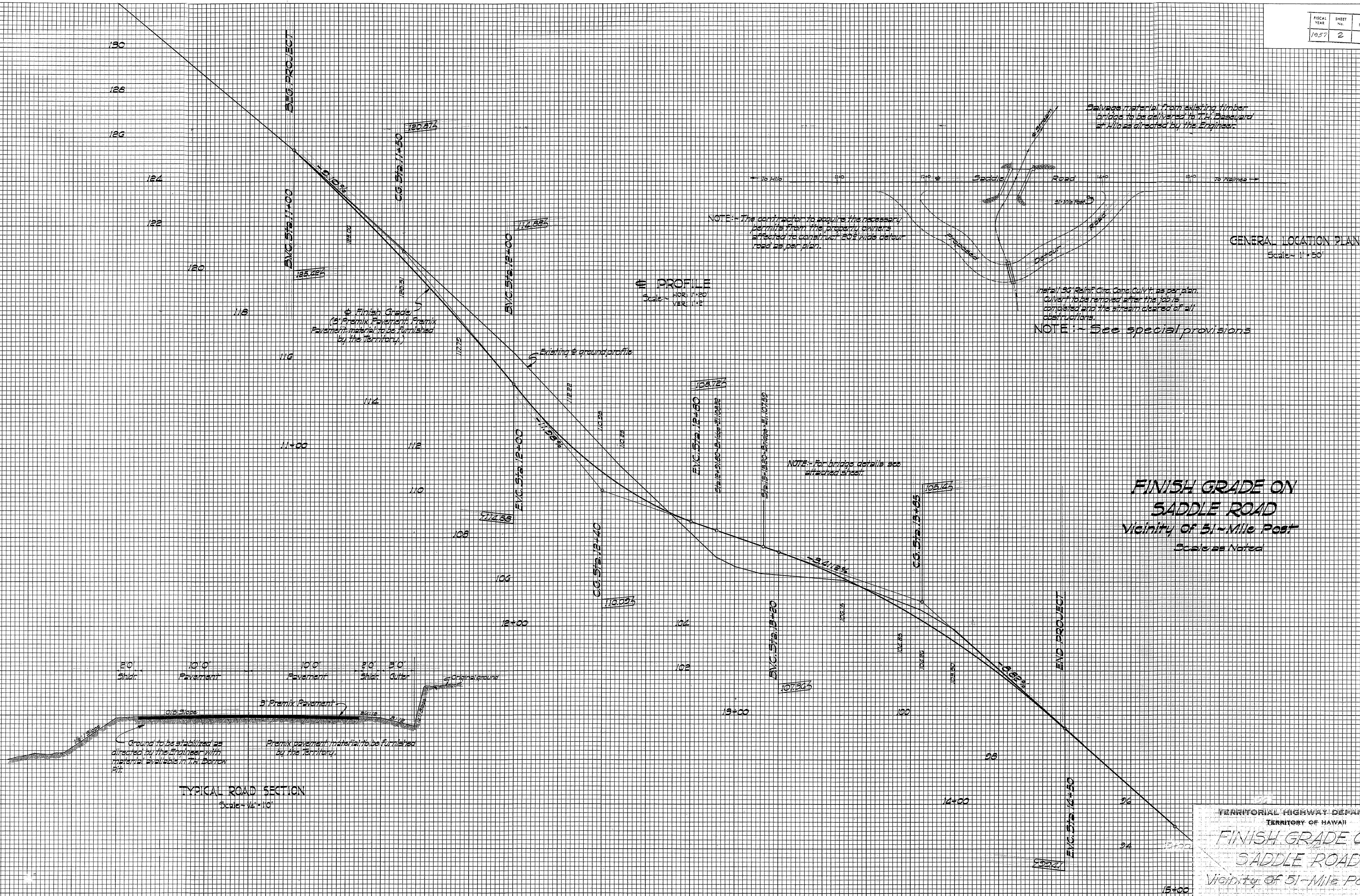


FISCAL YEAR	SHEET NO.	TOTAL SHEETS
1957	2	7

FINAL SURVEY	DATE
SUBMITTED	BY
NOTE BOOK	NO.
AREAS CHECKED	

ORIGINAL SURVEY	DATE
SUBMITTED	BY
NOTE BOOK	NO.
AREAS CHECKED	

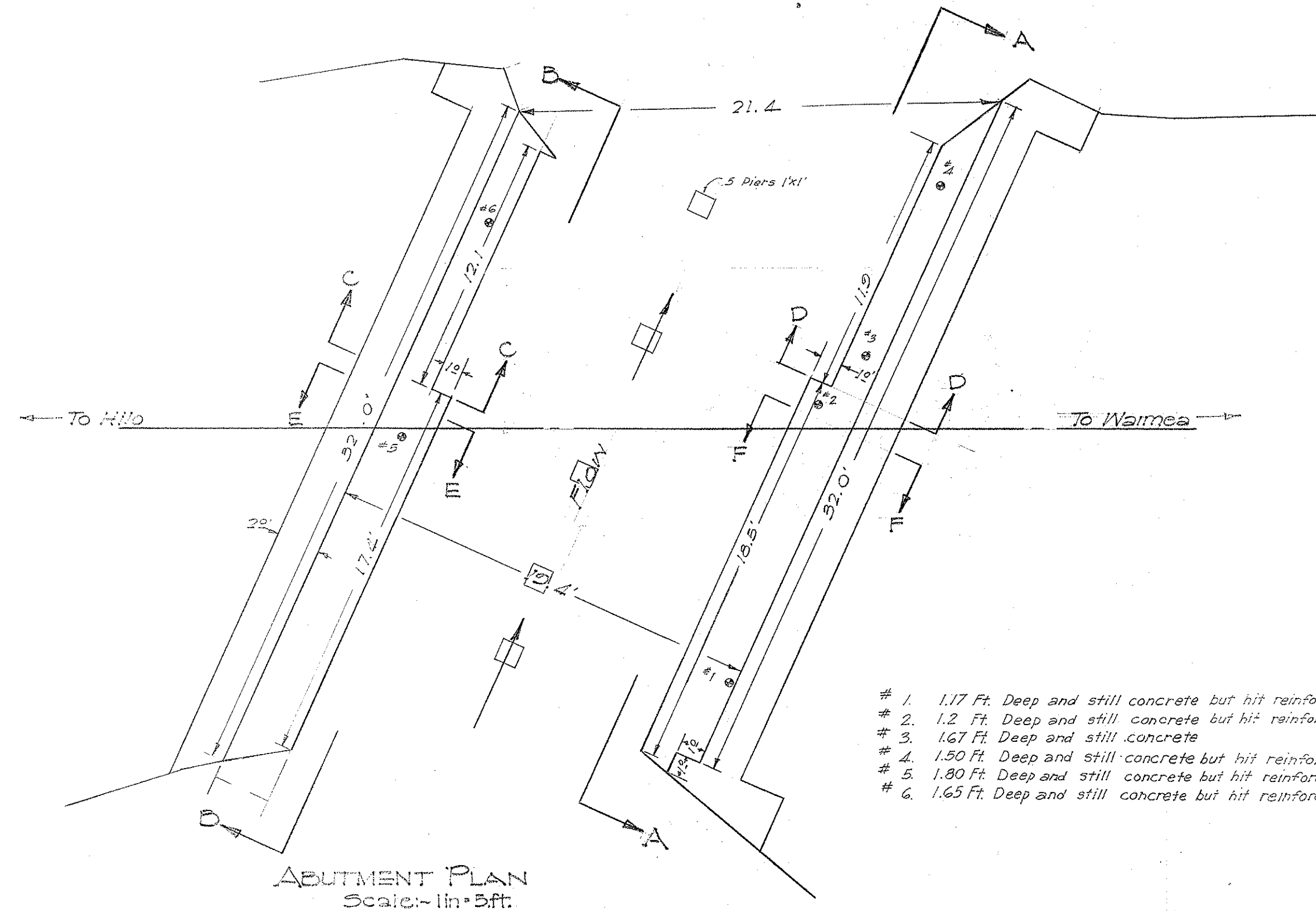
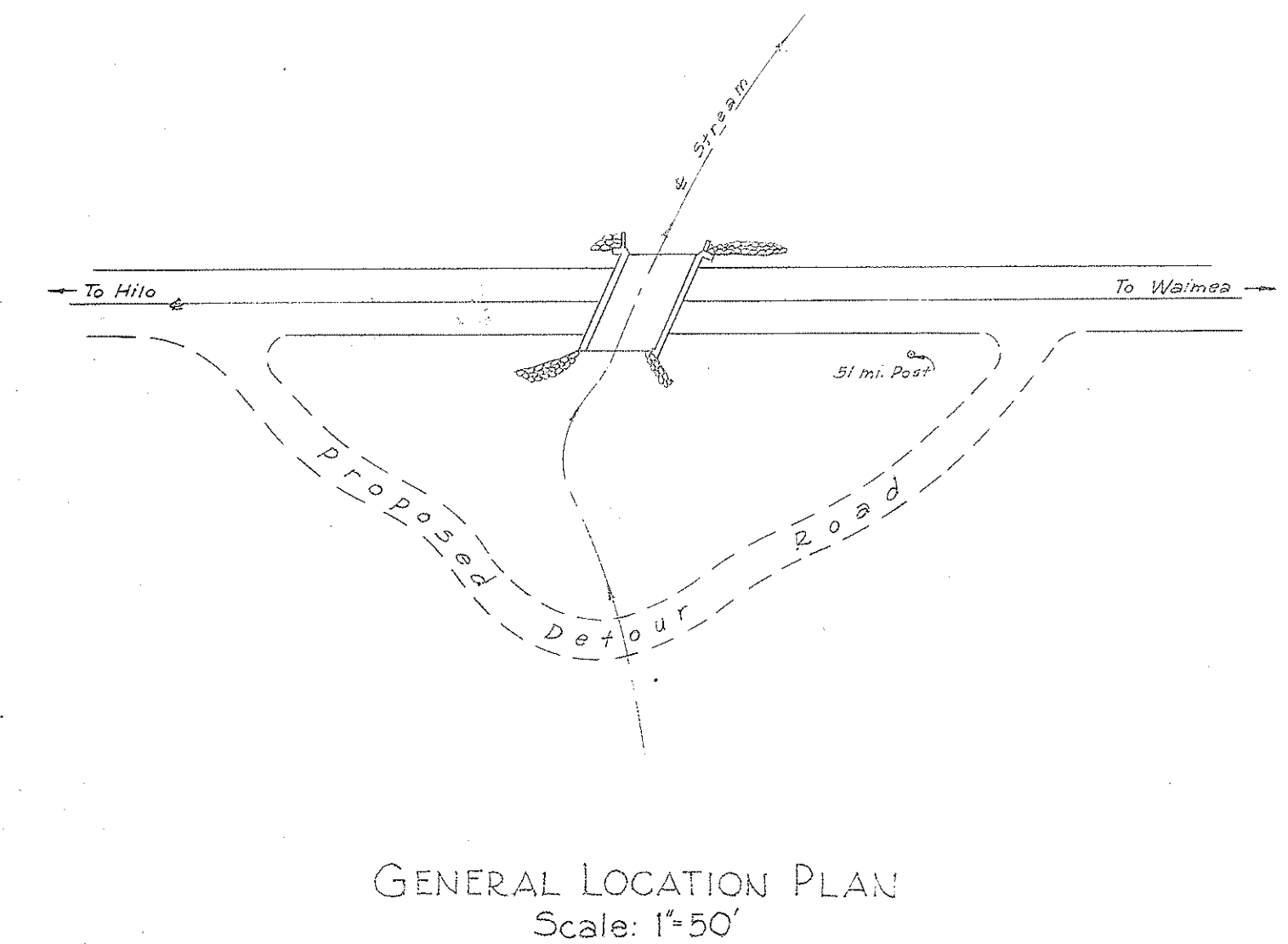
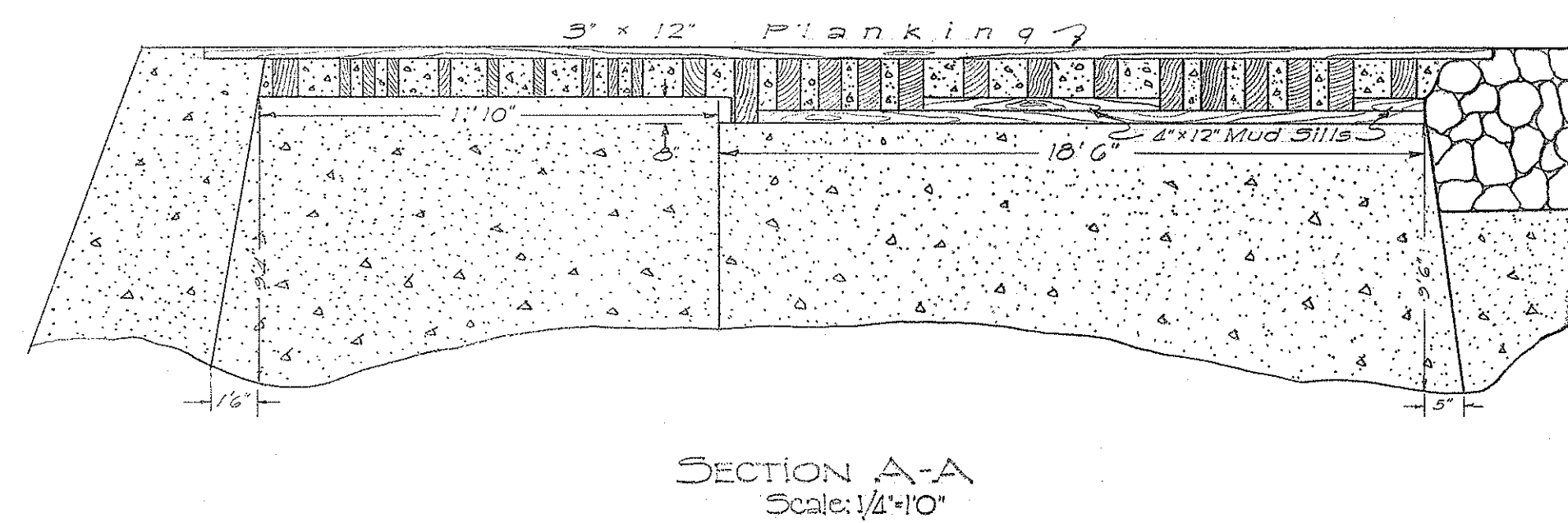
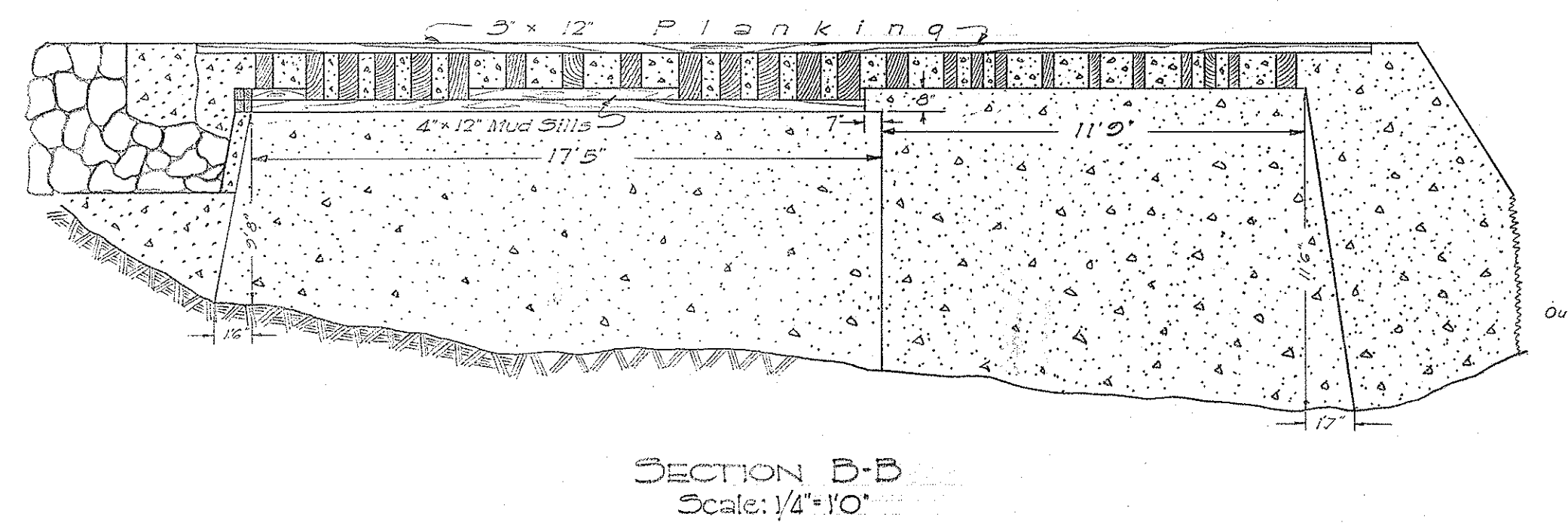
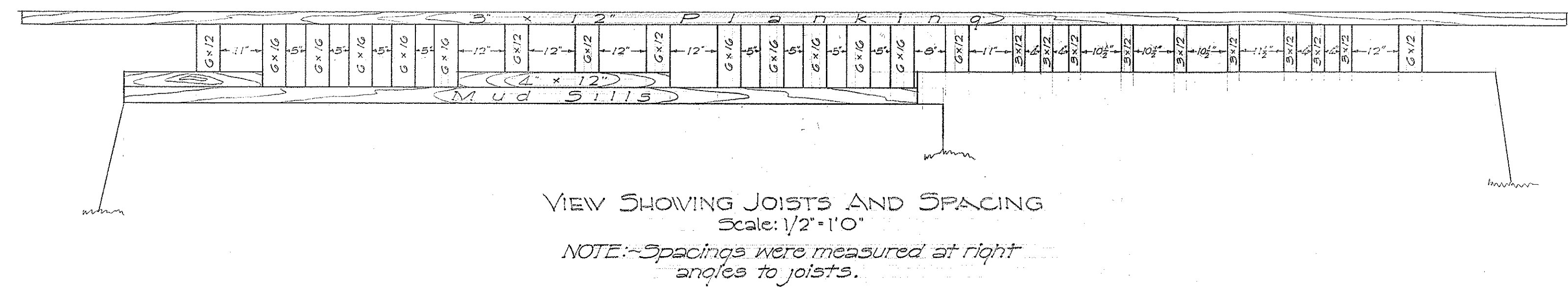
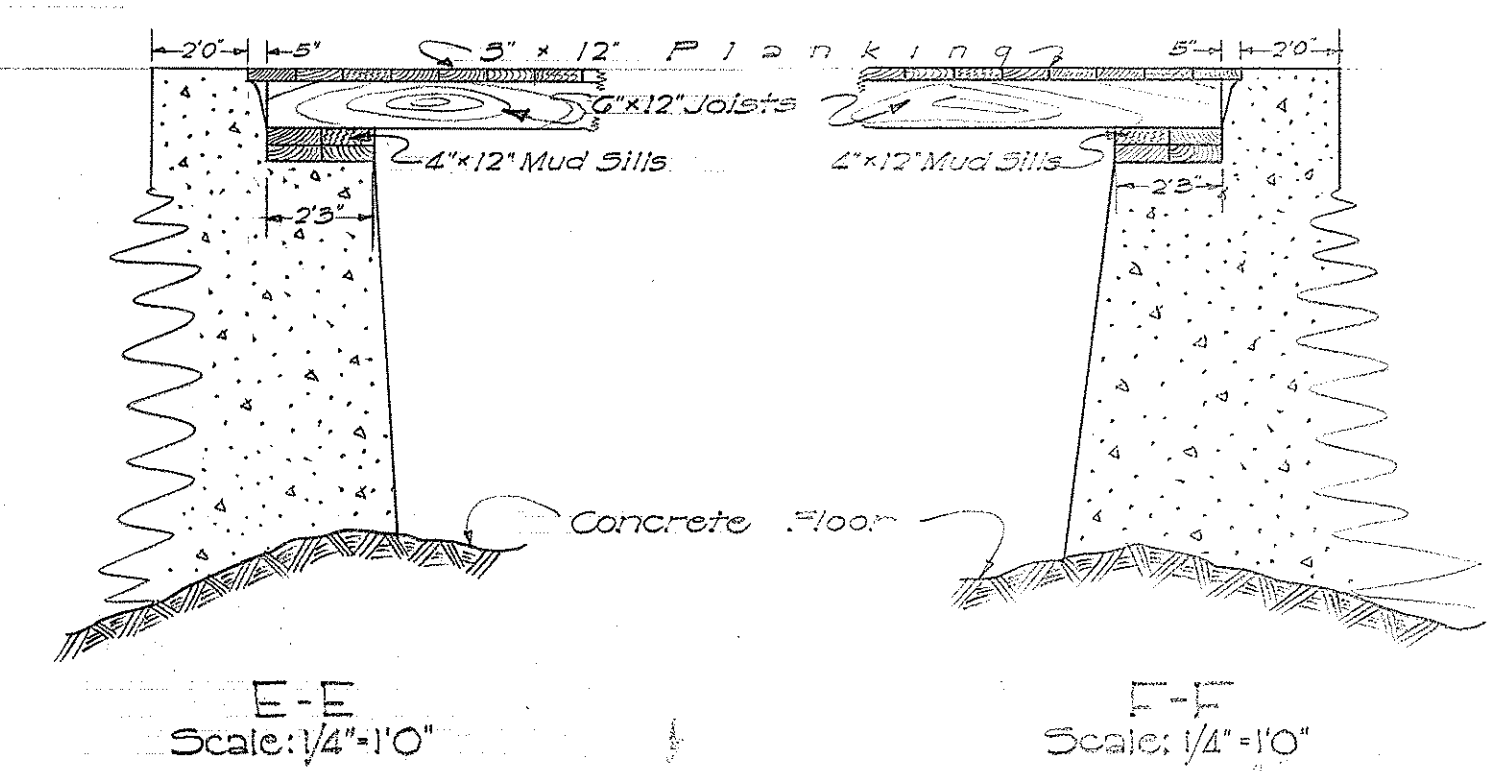
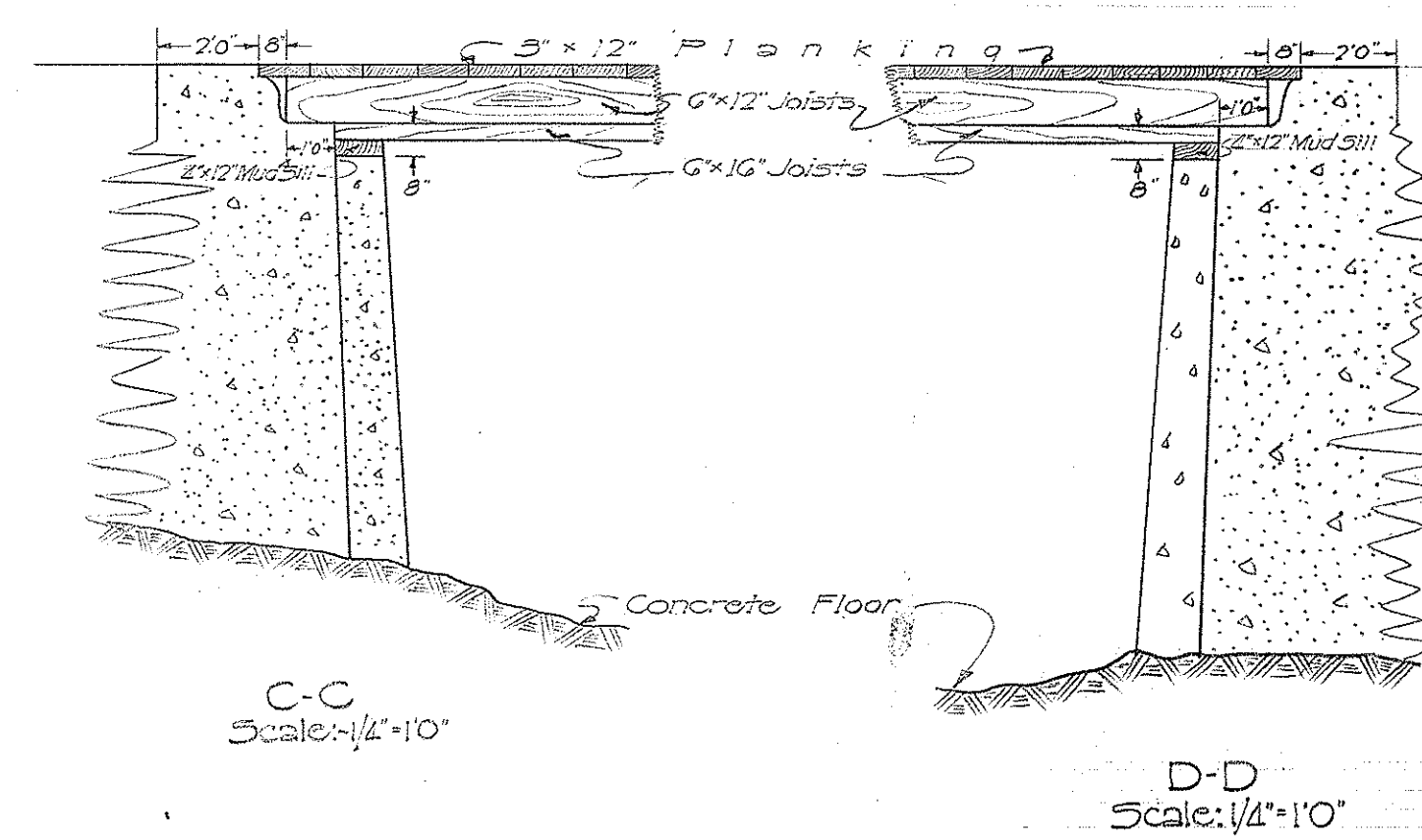
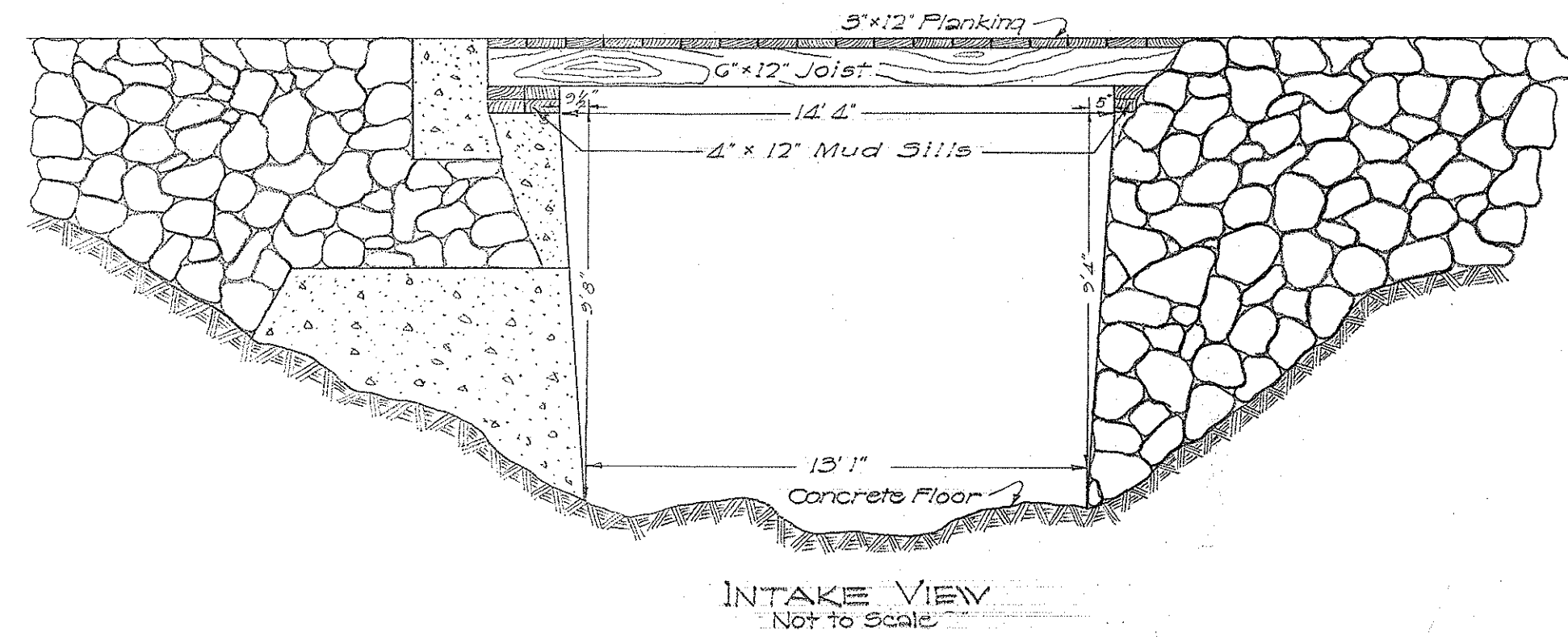
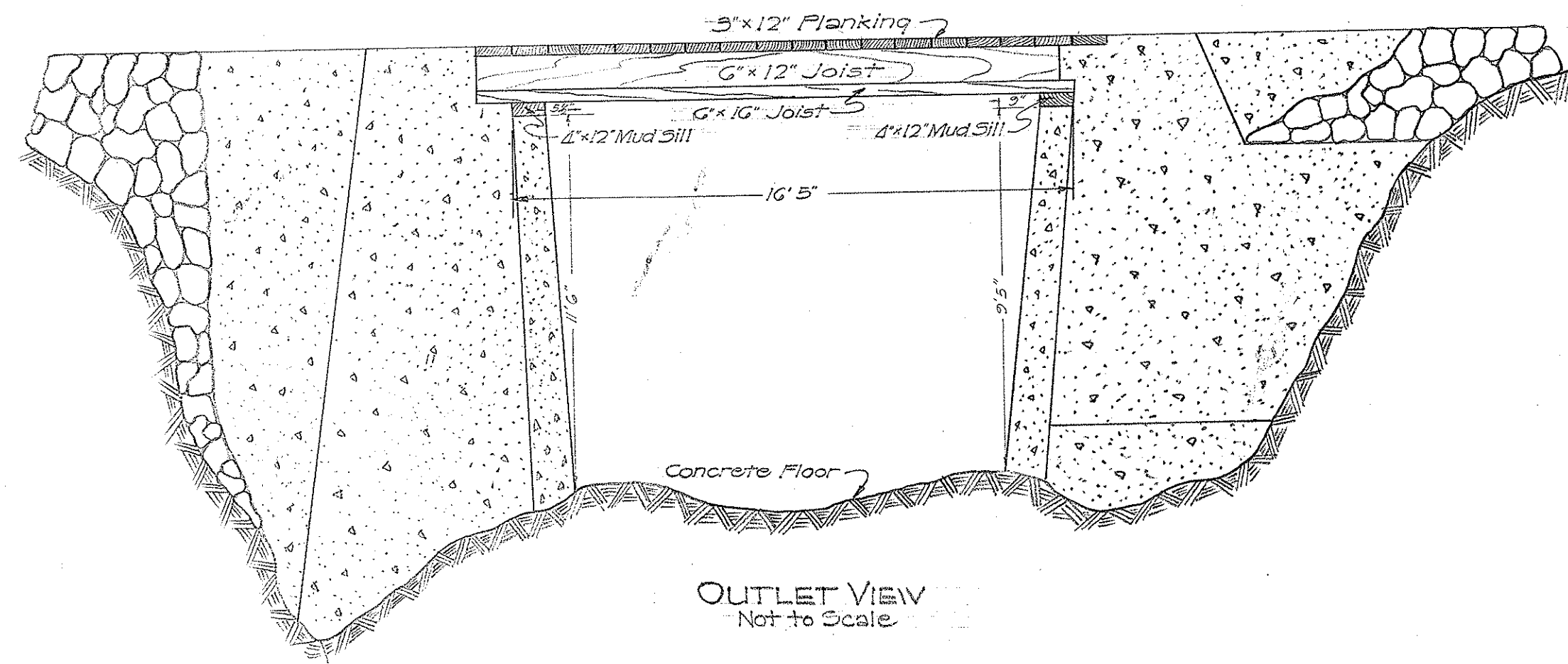


TERRITORIAL HIGHWAY DEPARTMENT  
 TERRITORY OF HAWAII  
**FINISH GRADE ON SADDLE ROAD**  
 Vicinity of 51-Mile Post  
 Scale as Noted April 1957

SHEET NO. 1 OF 7 SHEETS

5912.2





- # 1. 1.17 Ft. Deep and still concrete but hit reinforce steel
- # 2. 1.2 Ft. Deep and still concrete but hit reinforce steel
- # 3. 1.67 Ft. Deep and still concrete
- # 4. 1.50 Ft. Deep and still concrete but hit reinforce steel
- # 5. 1.80 Ft. Deep and still concrete but hit reinforce steel
- # 6. 1.65 Ft. Deep and still concrete but hit reinforce steel

ORIGINAL PLAN	DATE
DESIGNED BY	
DRAWN BY	
CHECKED BY	
NOTED BY	
QUANTITIES CHECKED BY	
CHECKED BY	
No.	

**TERRITORIAL HIGHWAY DEPARTMENT**  
**TERRITORY OF HAWAII**

PLAN SHOWING EXISTING BRIDGE  
ON CADDLE ROAD  
VICINITY OF 51 MI. POST  
Island of Hawaii

Scale As Noted July, 1956



