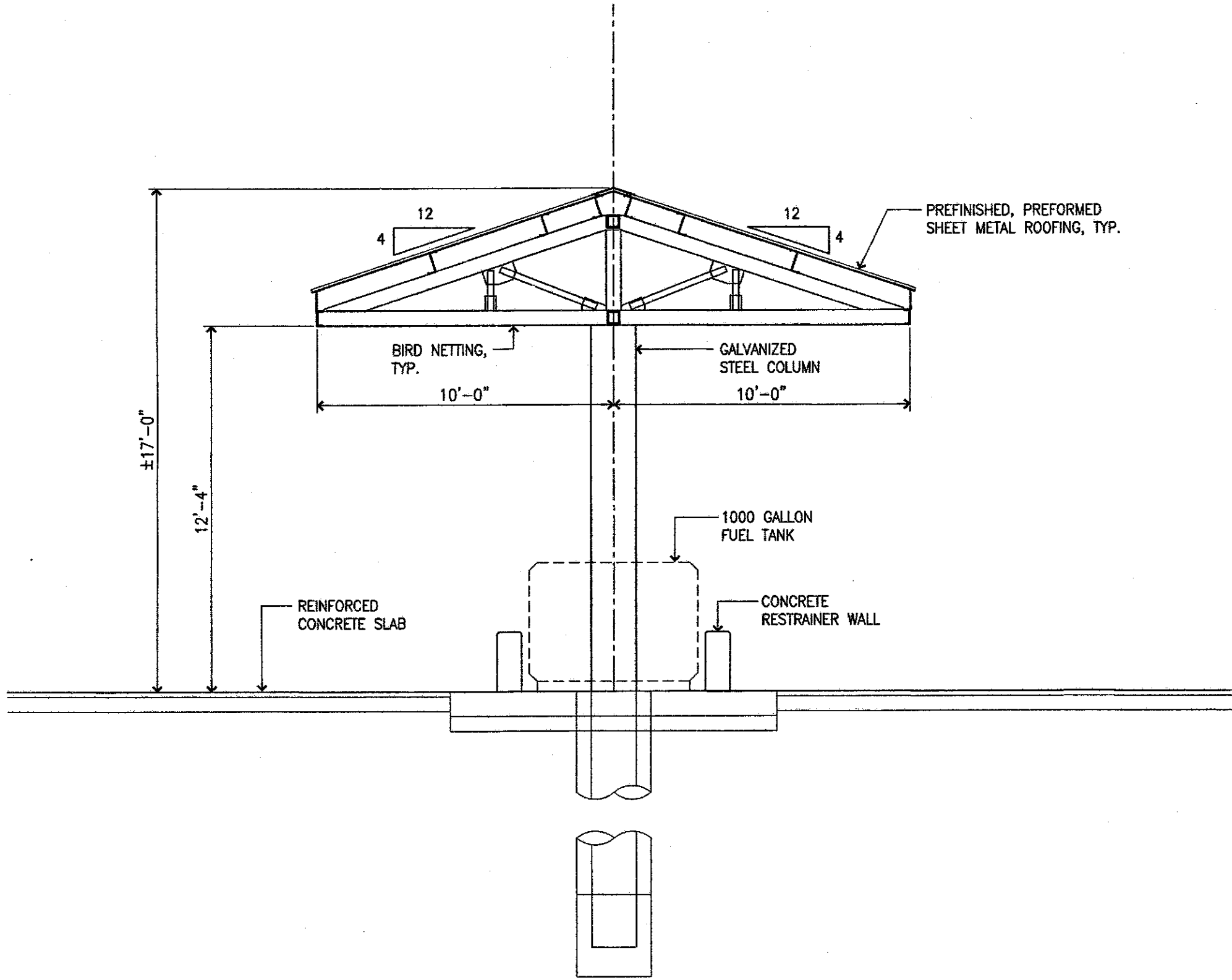
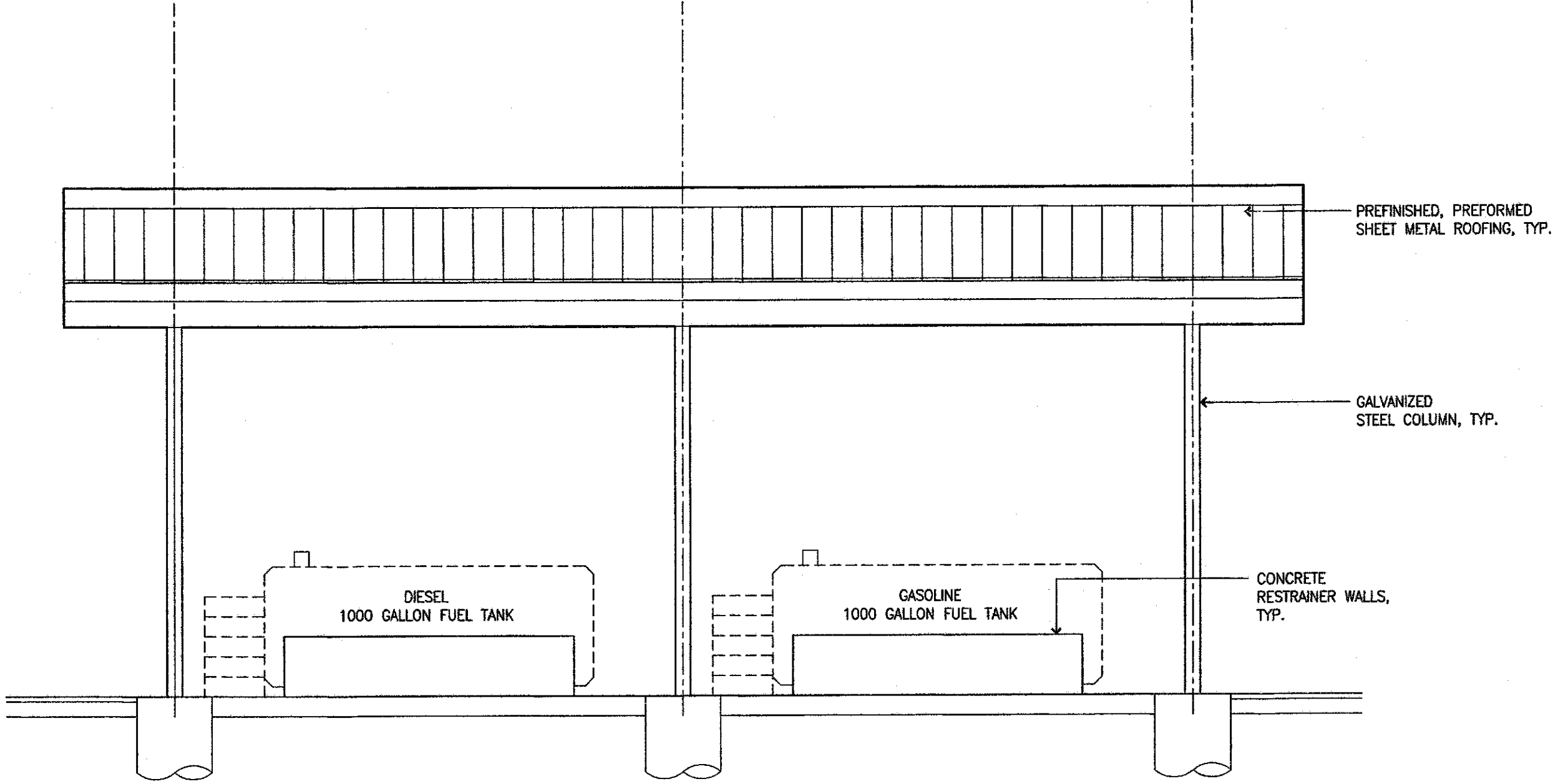


FED. ROAD DIST. NO.	STATE	PROJ. NO.	FISCAL YEAR	SHEET NO.	TOTAL SHEETS
HAWAII	HAW.	200A-01-10	2012	0	0



FUEL TANKS

**B**  
**AB2.1** **CROSS SECTION**  
SCALE: 1/4" = 1'-0"

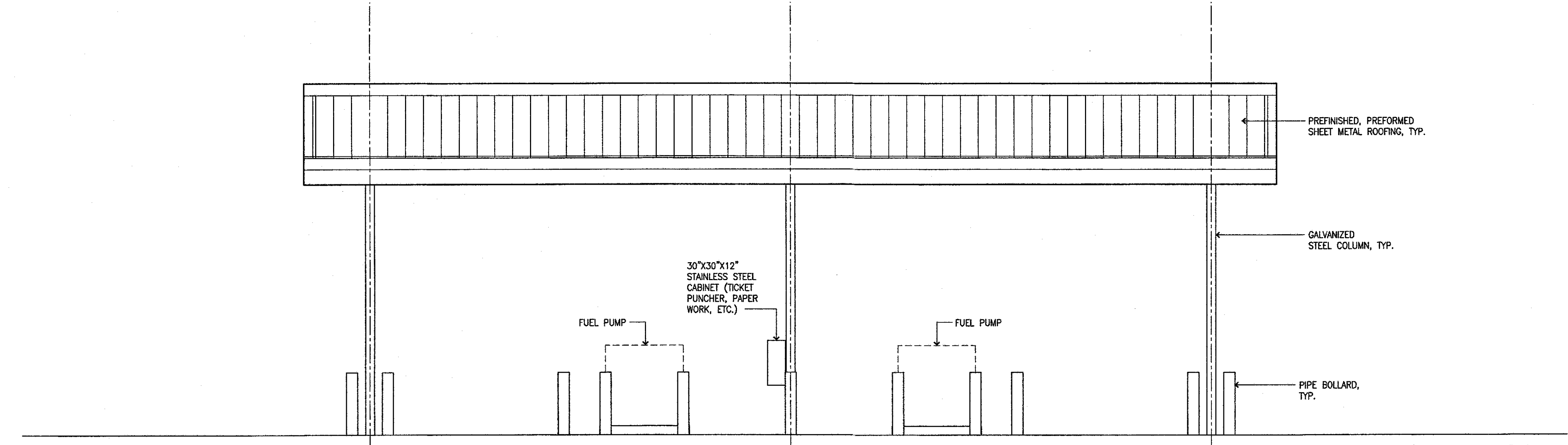


FUEL TANKS

**ELEVATION**  
SCALE: 1/4" = 1'-0"

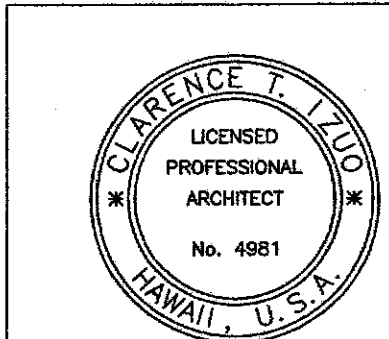
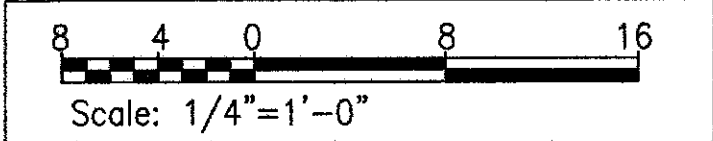
**GENERAL NOTES:**

- BIRD NETTING**
- BIRD NETTING SHALL BE CONSTRUCTED OF ABRASION, UV, FLAME AND ROT RESISTANT, HIGH DENSITY POLYETHYLENE. POLYETHYLENE SHALL FORM A 3/4" SQUARE MESH.
  - BIRD NETTING SHALL BE SUPPORTED WITH A TENSIONED CABLE SYSTEM RECOMMENDED BY THE BIRD NETTING MANUFACTURER. HARDWARE AND COMPONENTS OF THE CABLE SYSTEM SHALL BE STAINLESS STEEL.
  - BIRD NETTING SHALL BE K-NET HT BIRD NETTING AS MANUFACTURED BY NIXALITE OF AMERICA INC. OR APPROVED EQUAL. COLOR OF BIRD NETTING SHALL BE SELECTED BY THE OFFICER-IN-CHARGE.
  - BIRD NETTING INSTALLER SHALL BE FAMILIAR WITH THE INSTALLATION PROCEDURES RECOMMENDED BY THE MANUFACTURER.
  - STORE ALL NETTING AND NETTING HARDWARE IN A CLEAN, DRY AREA.
  - INSTALL BIRD NETTING AND TENSIONED CABLE SYSTEM AS RECOMMENDED BY THE MANUFACTURER. ALLOW FOR ACCESS AFTER INSTALLATION OF BIRD NETTING TO SURFACES OR OBJECTS THAT MAY REQUIRE MAINTENANCE SUCH AS ELECTRICAL EQUIPMENT.
  - INSTALL BIRD NETTING TO AVOID CONTACT WITH MACHINERY, VEHICLES, EXTREME HEAT, TREE BRANCHES AND OTHER ITEMS THAT MAY CAUSE DAMAGE TO THE BIRD NETTING.
  - COMPLETE INSTALLATION OF BIRD NETTING SHALL BE TAUT AND FREE OF WRINKLES, GAPS AND OPENINGS.
  - SUBMIT COMPLETE SHOP DRAWINGS FOR REVIEW.



PUMPS

**ELEVATION**  
SCALE: 1/4" = 1'-0"



04-30-16  
SIGNATURE EXP. DATE OF THE LICENSE  
THIS WORK WAS PREPARED BY  
ME OR UNDER MY SUPERVISION

AB2.1

STATE OF HAWAII  
DEPARTMENT OF TRANSPORTATION  
HIGHWAYS DIVISION  
**FUELING STATION**  
**MAUNA KEA MAINTENANCE**  
**BASEYARD**  
**Saddle Road**  
Project No. 200A-01-10  
Scale: As Noted Date: August, 2015  
SHEET No. 1 OF X SHEETS