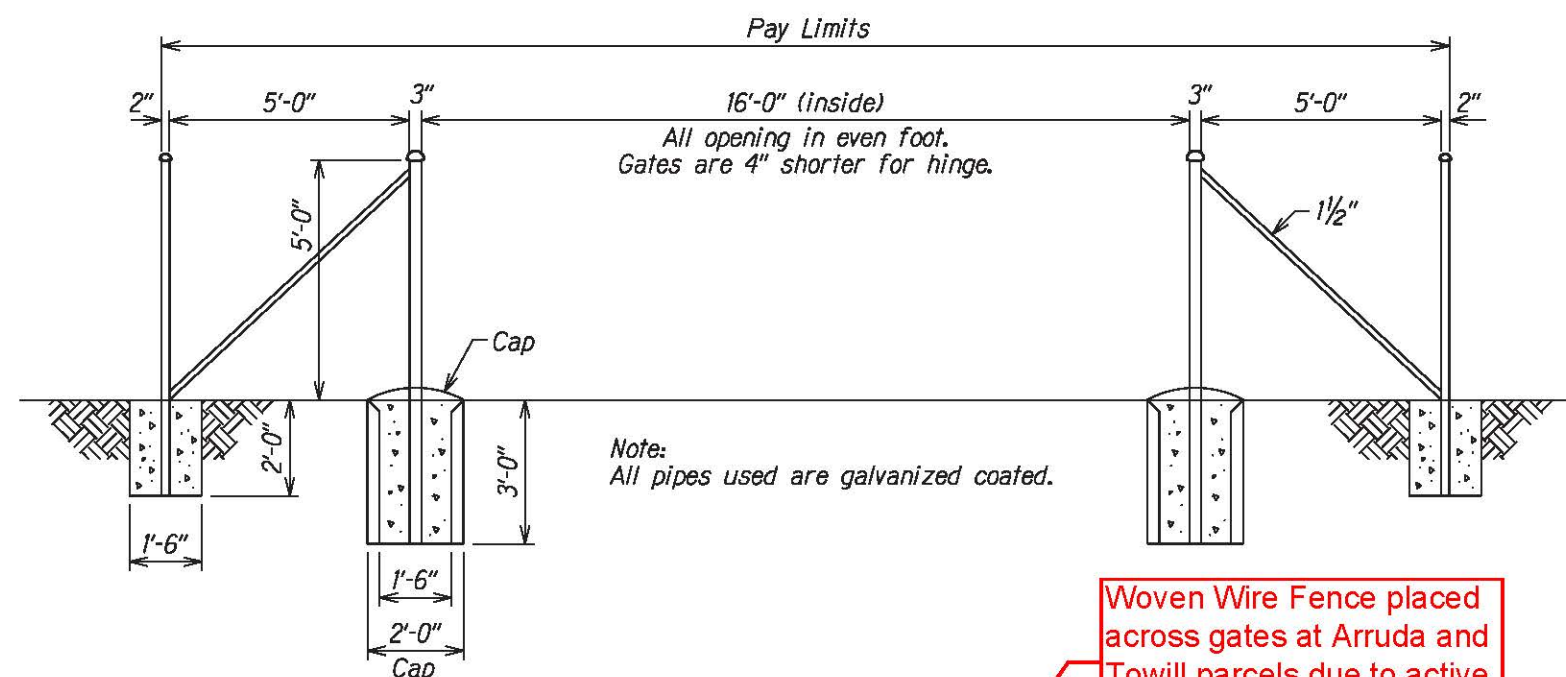
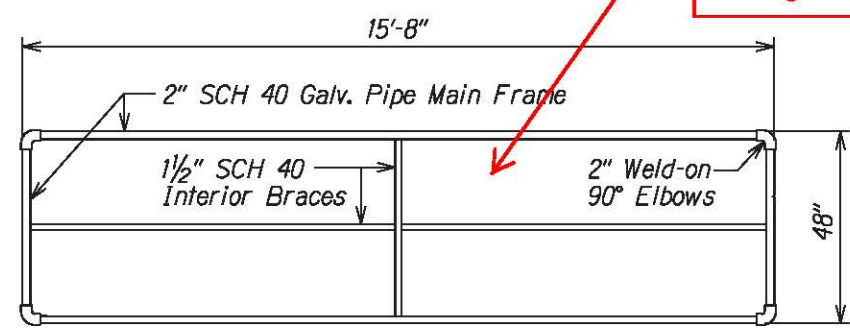


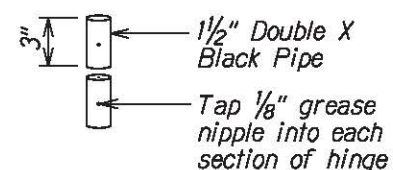
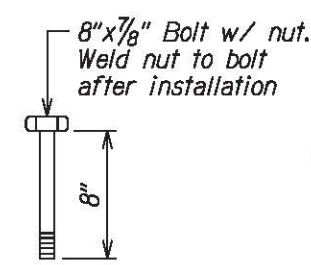
STATE	SADDLE ROAD PROJECT	SHEET NO.	TOTAL SHEETS
H1	H1 SR 200(3)	M1	M6



Woven Wire Fence placed across gates at Arruda and Towill parcels due to active cattle grazing

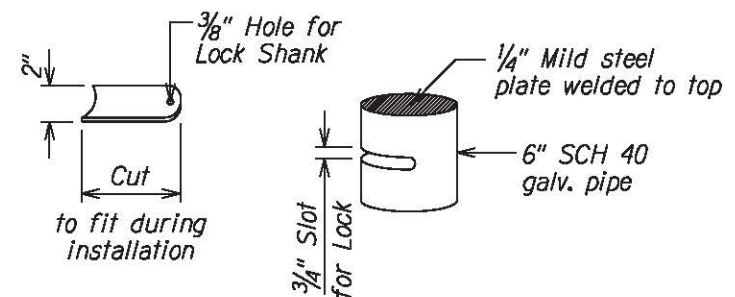


Standardized Gate Specifications

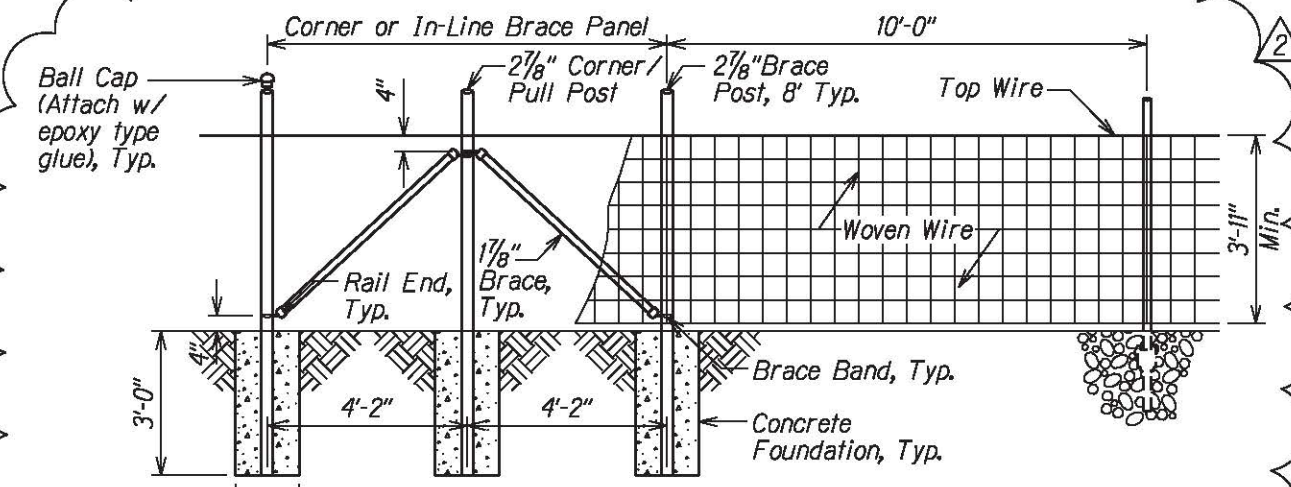


Note:
Weld one piece to gate & one piece to brace pipe for each set.

HINGE DETAILS

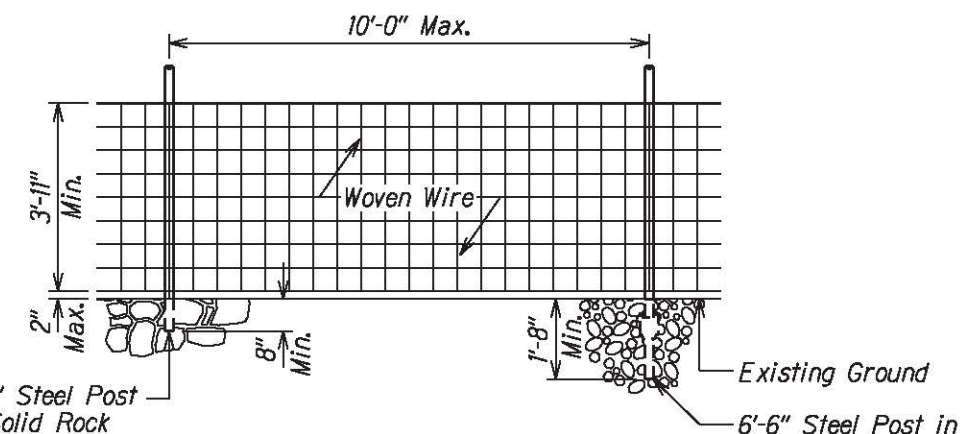


LOCK HOUSING DETAILS

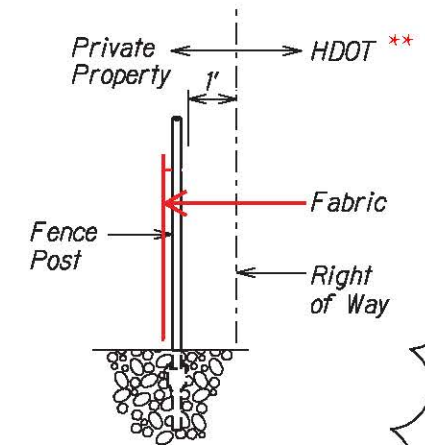


TYPICAL CORNER & IN-LINE BRACE PANEL DETAIL (48-INCH HEIGHT FENCE)

NOTE:
**Fence placed 1' within State ROW adjacent to Arruda parcels



TYPICAL FENCE SECTION (48-INCH HEIGHT)



LOCATION OF FENCE RELATIVE TO RIGHT OF WAY

BRUCE K. MEYERS
Licensed Professional Engineer
No. 8336-C
HAWAII, U.S.A.

The work was prepared by me or under my supervision and construction of this project will be under my observation.

Bruce Meyers
Expiration Date of License 4/16.

U.S. DEPARTMENT OF TRANSPORTATION
FEDERAL HIGHWAY ADMINISTRATION
CENTRAL FEDERAL LANDS HIGHWAY DIVISION

SPECIAL C619-1
METAL GATE DETAILS &
WOVEN WIRE FENCE DETAILS

Scale: N.T.S. Date: August 21, 2015

SHEET No. 1 OF 1

M:\Mproj\Lennie\Saddle East 11-6\sheet\stnm001.dgn