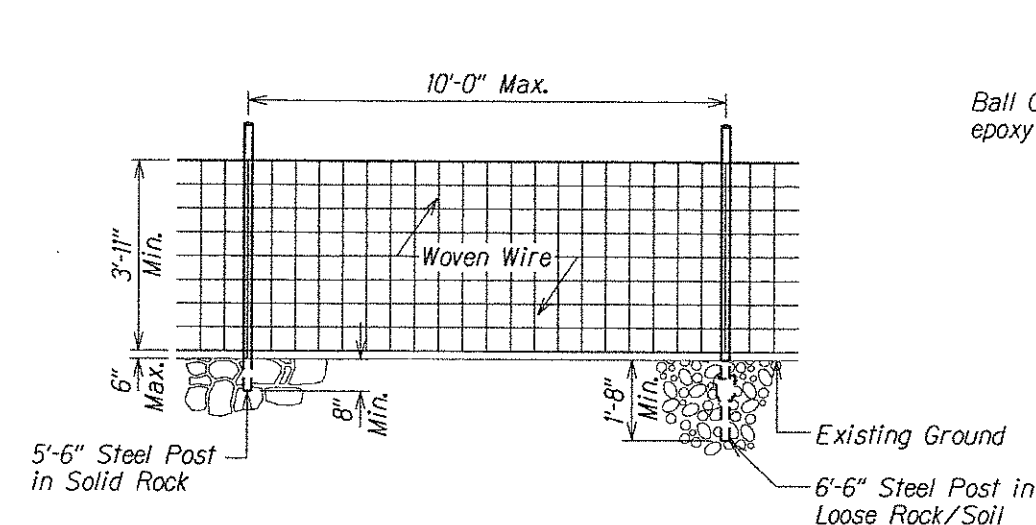
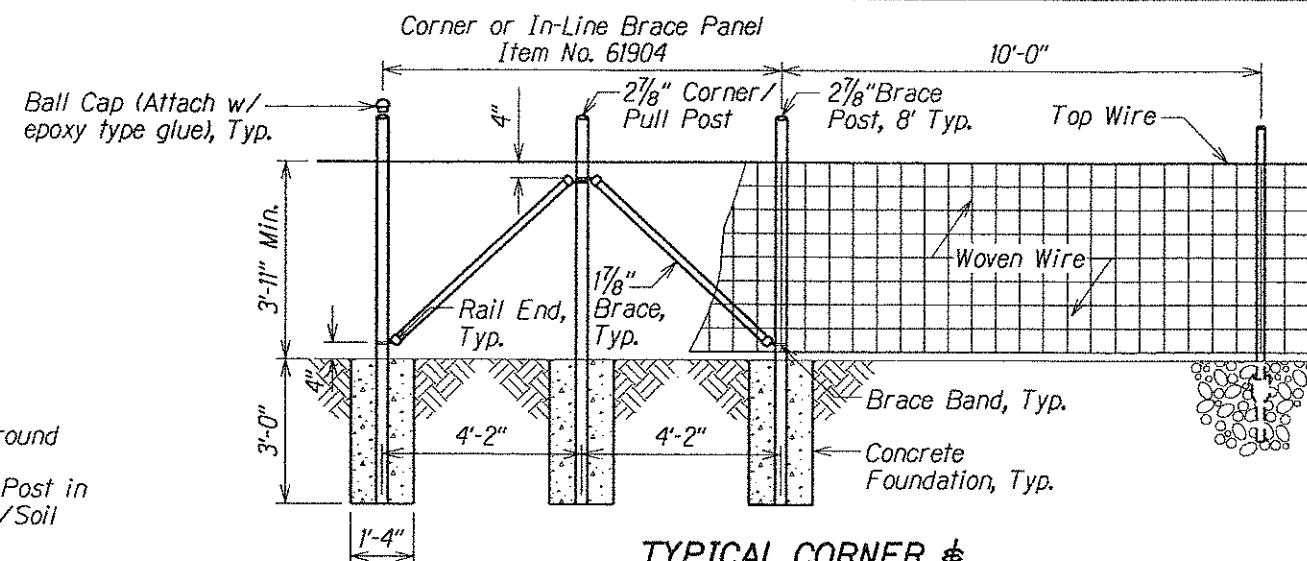


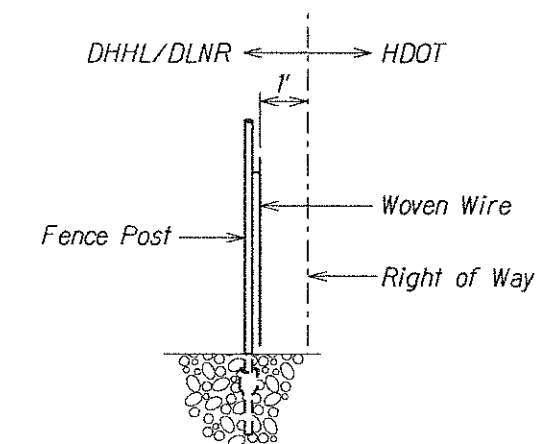
STATE	SADDLE ROAD PROJECT	SHEET NO.	TOTAL SHEETS
HI	HI A-AD 6(4)	M1	M5



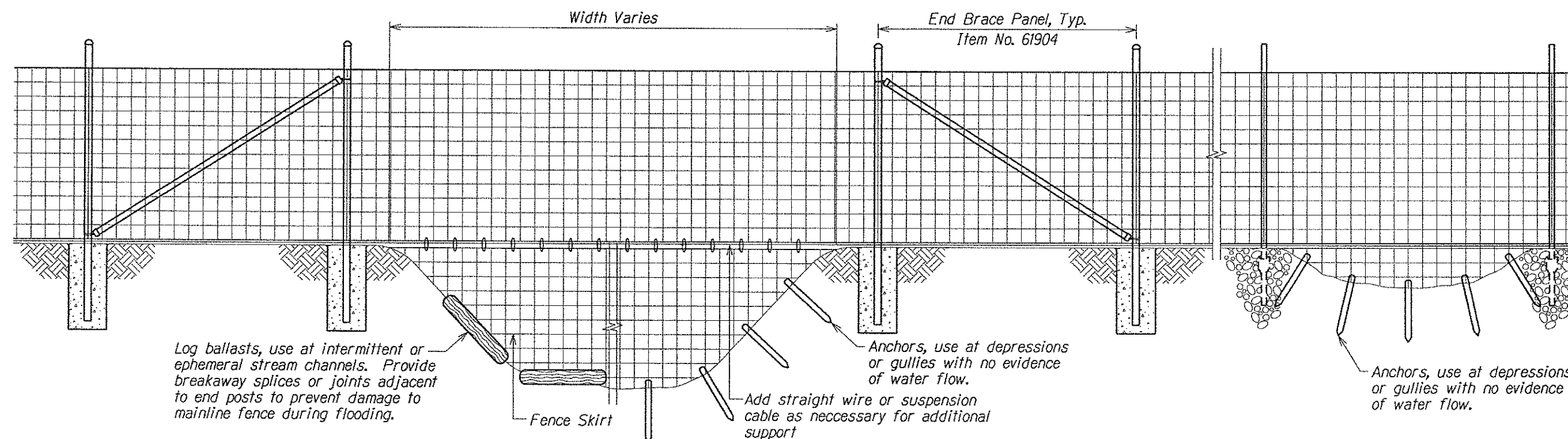
**TYPICAL FENCE SECTION  
(48-INCH HEIGHT)**



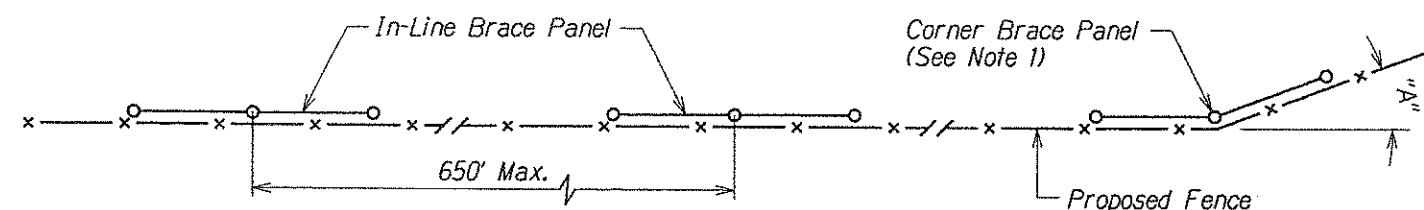
**TYPICAL CORNER &  
IN-LINE BRACE PANEL DETAIL  
(48-INCH HEIGHT FENCE)**



**LOCATION OF FENCE  
RELATIVE TO RIGHT OF WAY**



**FENCE SKIRT DETAIL**

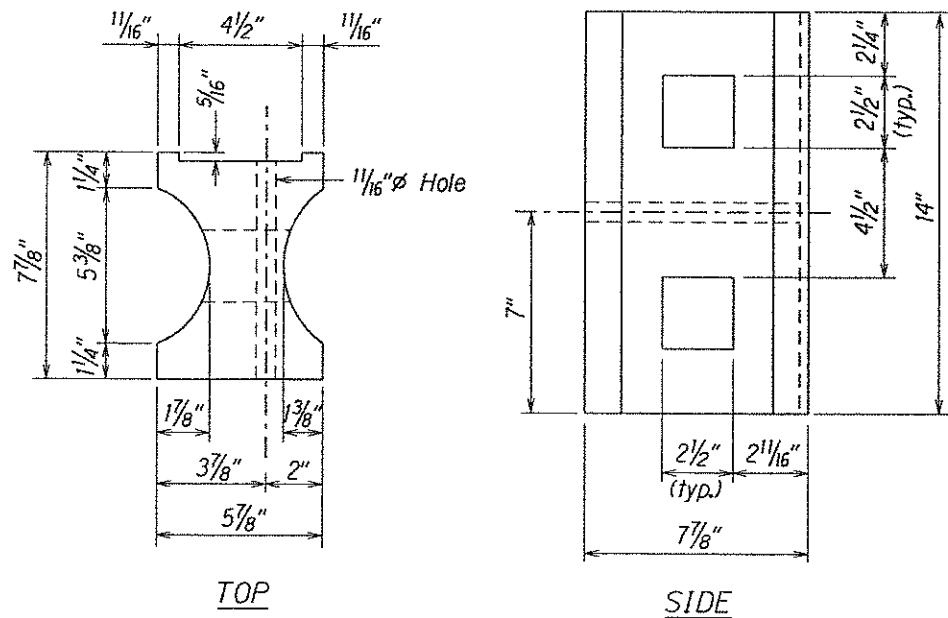


**BRACE PANEL LOCATIONS AND PLACEMENT**

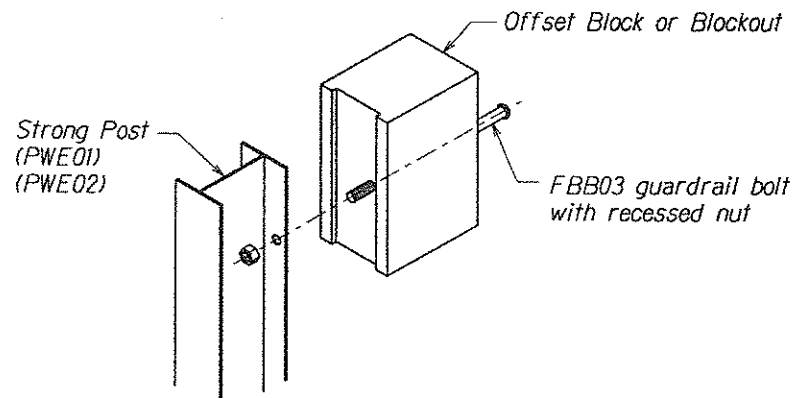
**Notes:**

1. Corner brace panel required when "A"  $\geq 20^\circ$ .
2. Brace Panels to be placed on inside (DHHL/DLNR side) of fence.

<p>The work was prepared by me or under my supervision and construction for this project will be in accordance with the expiration date of license 3/08.</p>	U.S. DEPARTMENT OF TRANSPORTATION FEDERAL HIGHWAY ADMINISTRATION CENTRAL FEDERAL LANDS HIGHWAY DIVISION	
	<b>SPECIAL DETAIL C619-1 WOVEN WIRE FENCE DETAILS</b>	
	Scale: N.T.S.	Date: June 29, 2007
	SHEET No. 1 OF 1	

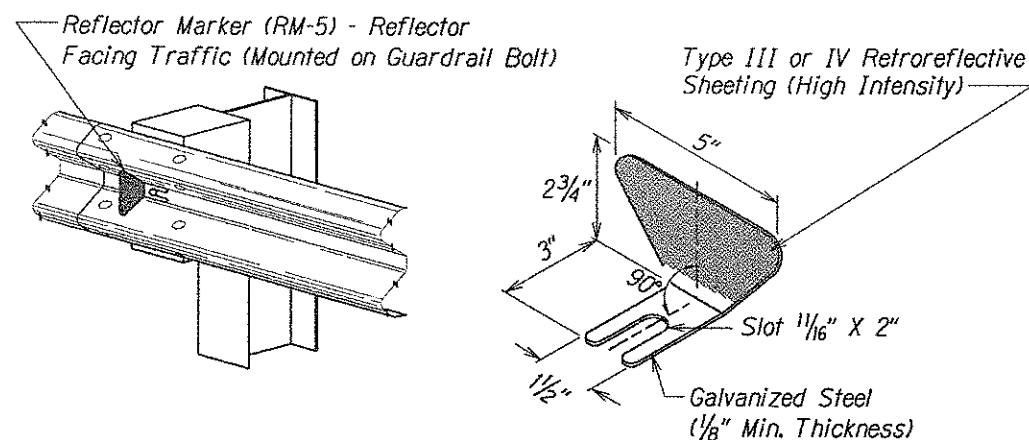


**RECYCLED PLASTIC BLOCKOUT (TYPE I)**

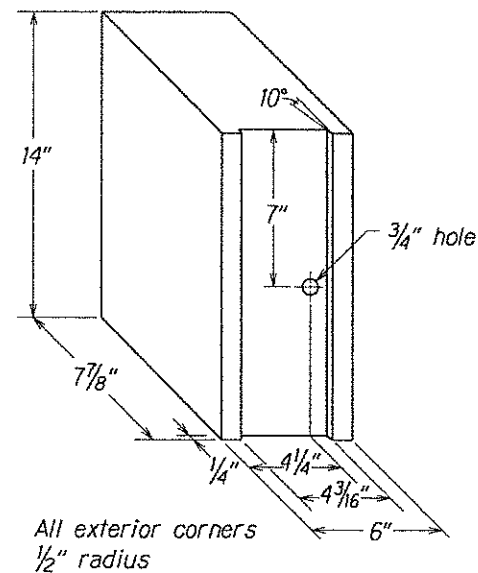


**Exploded View**  
(Rail and washer not shown)

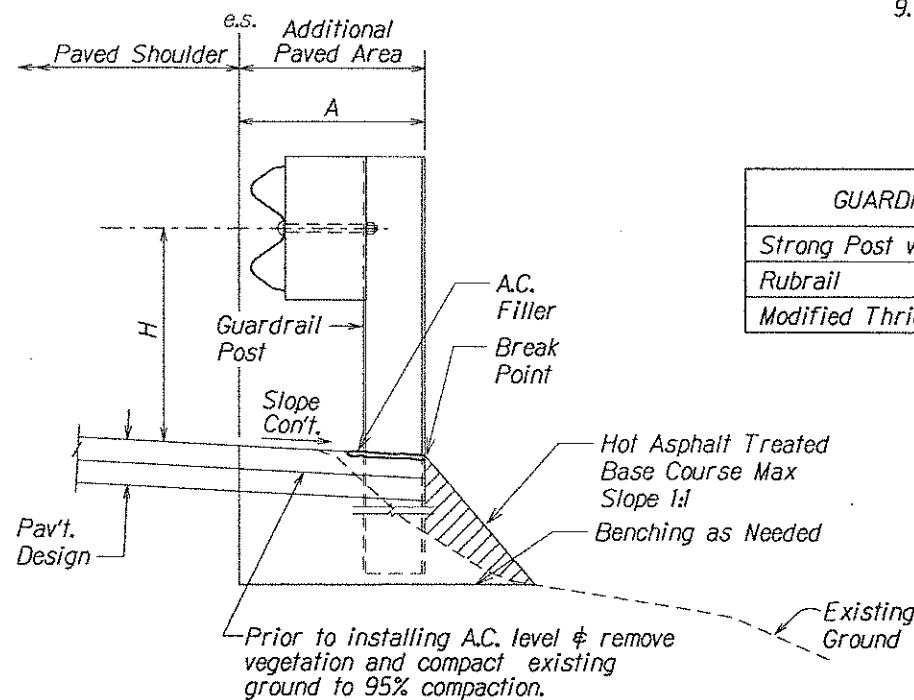
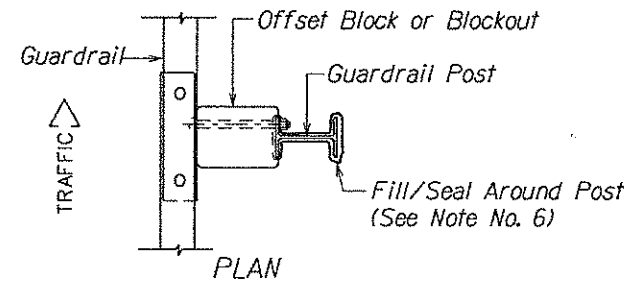
**STEEL POST AND BLOCK DETAIL**



**REFLECTOR MARKER (RM-5) DETAIL AND TYPICAL INSTALLATION**



**RECYCLED POLYETHYLENE OFFSET BLOCK (TYPE II)**



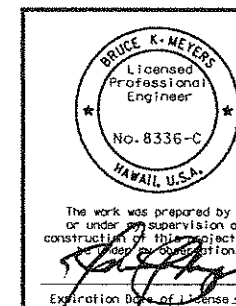
**ELEVATION**

**TYPICAL GUARDRAIL INSTALLATION**

**GENERAL NOTES**

- All hardware, posts and fasteners shall be hot-dip zinc coated galvanized after fabrication. No punching, drilling or cutting will be permitted after galvanizing.
- Where conditions require, special post lengths in increments of 6 inches may be specified.
- All fasteners, posts, and rail elements (i.e. FBB03, PWE01, RWM02b, etc.) shall conform to the latest edition and amendments of "A Guide to Standardized Highway Barrier Rail Hardware", a report prepared and approved by the AASHTO-AGC-ARTBA Joint Cooperative Committee, Subcommittee On New Highway Materials, Task Force 13 Report. Dimensions of fasteners, posts and rail elements have been converted from metric units into their present form.
- The Recycled Plastic Block or Offset Block shall be approved by the CO.
- All new guardrail systems (system consists of total length of guardrail including both end treatments) shall include the Additional Paved Area.
- After the guardrail posts are installed in the paved area, fill/seal around each guardrail post and all cracks in the paved area caused during the guardrail post installation. If required by the CO, tamper the paved area around the guardrail post prior to filling/sealing. All costs associated with this work shall not be paid for separately, but shall be considered incidental to the various guardrail items.
- When standards for the fill slope area cannot be met, a site specific, CO approved design may be used.
- New A.C. pavement at guardrails shall extend 6 feet longitudinally beyond terminal ends.
- Reflector Markers (RM-5) mounted on guardrails shall be spaced every 250 feet. Furnishing and installing of each RM-5 shall be considered incidental to the adjacent guardrail system. RM-5's shall not be installed on Terminal Sections.

GUARDRAIL TYPE	DIMENSION	
	H	A
Strong Post w/W Beam	1'-9 5/8"	1'-6"
Rubrail	2'-0"	1'-6"
Modified Thrie Beam	2'-0"	2'-0"



U.S. DEPARTMENT OF TRANSPORTATION  
FEDERAL HIGHWAY ADMINISTRATION  
CENTRAL FEDERAL LANDS HIGHWAY DIVISION

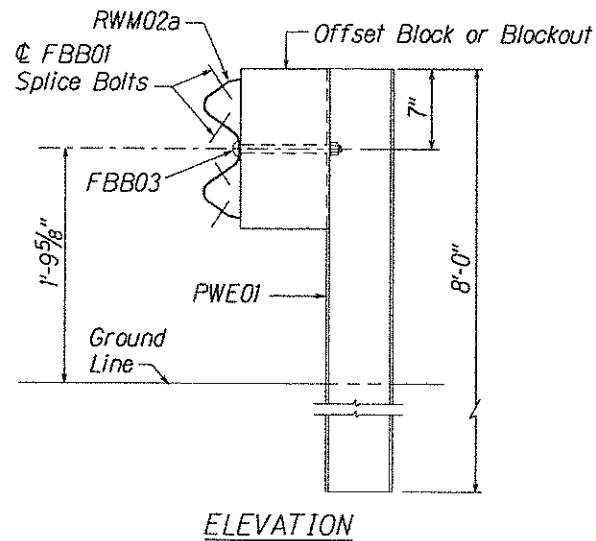
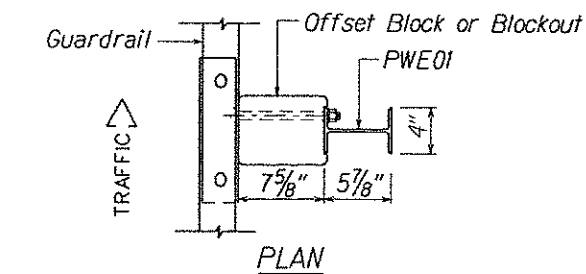
**SPECIAL DETAIL 617-3  
GUARDRAIL TERMINAL  
CONNECTORS & END SECTIONS**

Scale: N.T.S.

Date: June 29, 2007

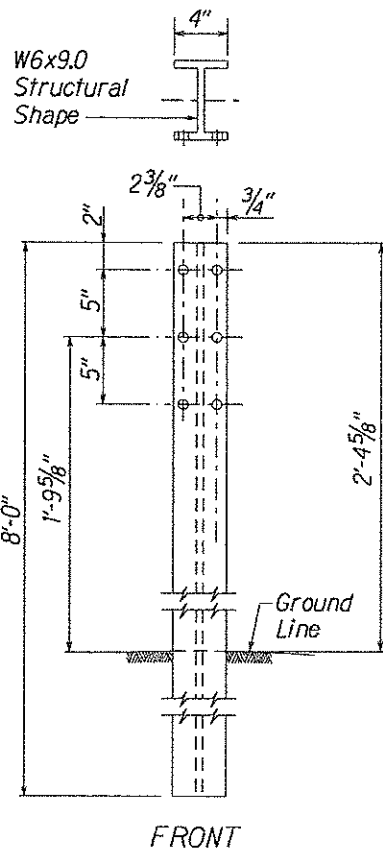
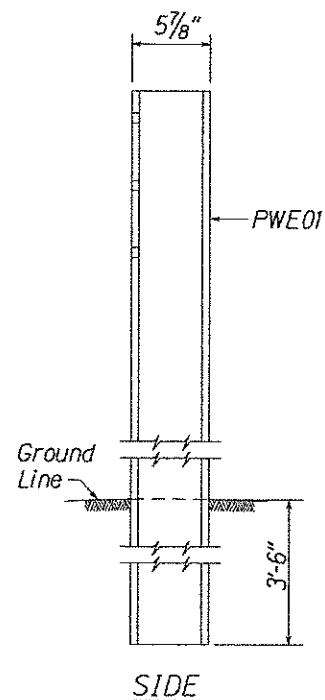
SHEET No. 1 OF 2

STATE	SADDLE ROAD PROJECT	SHEET NO.	TOTAL SHEETS
HI	HI A-AD 6(4)	M3	M5

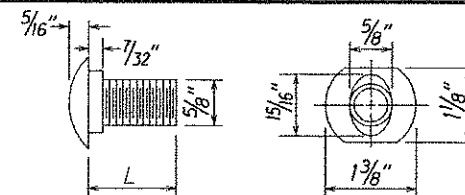


**STRONG POST W-BEAM GUARDRAIL (SGR04a)**

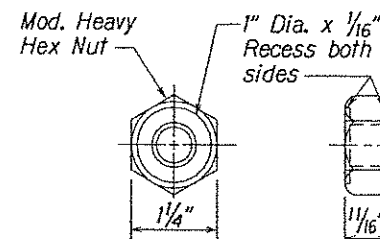
NOTE:  
All Holes are  
3/4\" Dia.



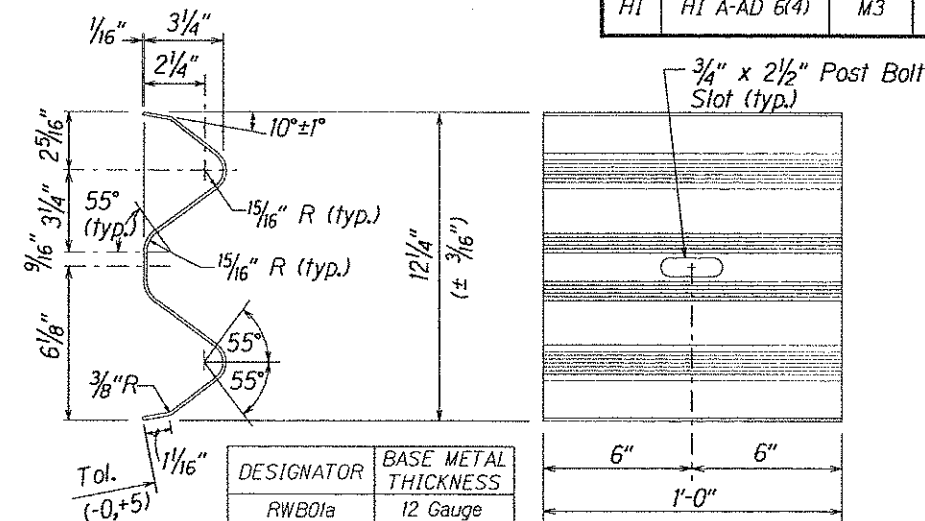
**W-BEAM STRONG POST (PWE01)**



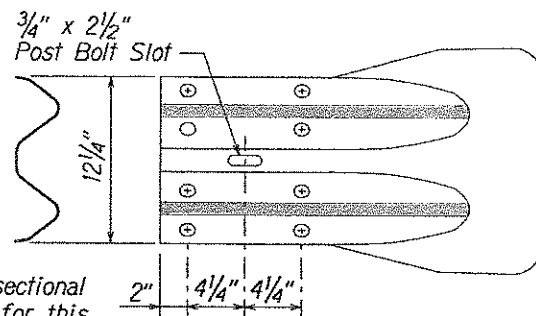
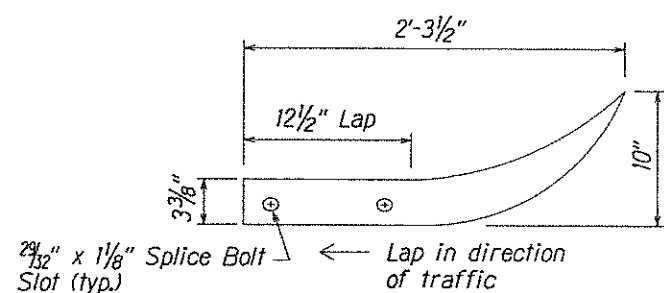
DESIGNATOR	L
FBB01	1 3/8\"
FBB02	2\"
FBB03	10\"



**GUARDRAIL BOLTS AND RECESSED NUT**



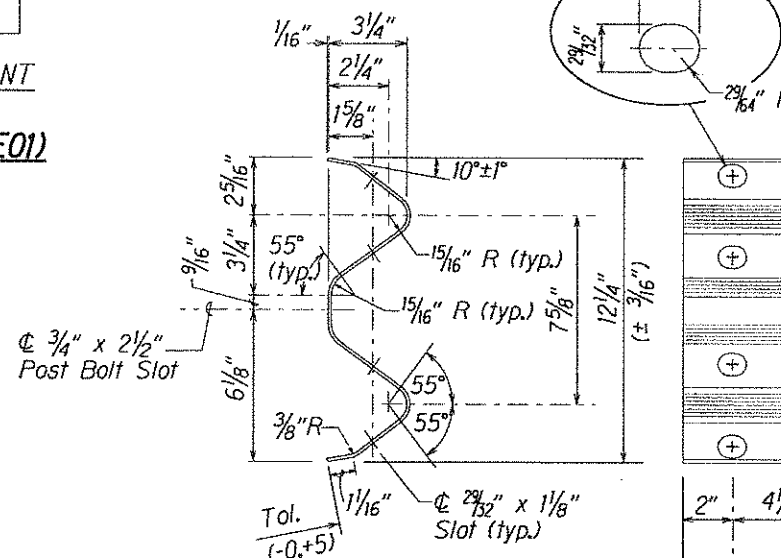
**W-BEAM BACK-UP-PLATE (RWB01a)**



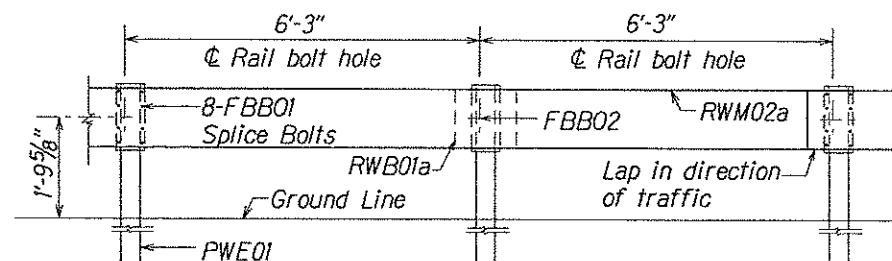
The cross-sectional dimensions for this part are to fit over part RWM02a on the approach end and under part RWM02a on the trailing end.

DESIGNATOR	BASE METAL THICKNESS
RWE01a	12 Gauge

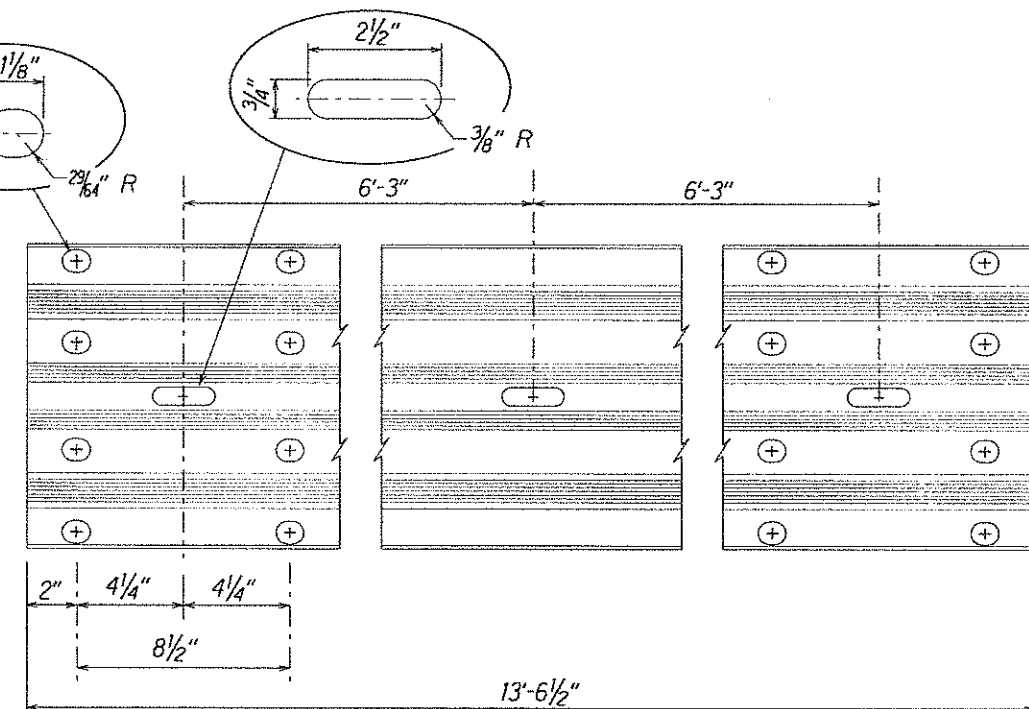
**W-BEAM END SECTION (FLARED RWE01a)**



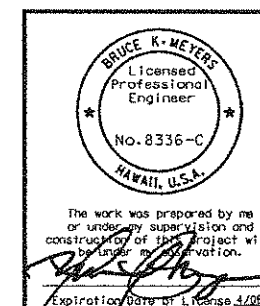
DESIGNATOR	BASE METAL THICKNESS
RWM02a	12 Gauge



**STRONG POST W-BEAM GUARDRAIL WITH RECYCLED OFFSET BLOCK OR PLASTIC BLOCKOUT**



**2 SPACE W-BEAM GUARDRAIL (RWM02a)**



U.S. DEPARTMENT OF TRANSPORTATION  
FEDERAL HIGHWAY ADMINISTRATION  
CENTRAL FEDERAL LANDS HIGHWAY DIVISION

**SPECIAL DETAIL 617-2  
STRONG POST W-BEAM  
GUARDRAIL**

Scale: N.T.S.

Date: June 29, 2007

SHEET No. 2 OF 2

M3

STATE	SADDLE ROAD PROJECT	SHEET NO.	TOTAL SHEETS
HI	HI A-AD 6(4)	M4	M5

**SHEET  
INTENTIONALLY  
LEFT BLANK**

STATE	SADDLE ROAD PROJECT	SHEET NO.	TOTAL SHEETS
HI	HI A-AD 6(4)	M5	M5

**SHEET  
INTENTIONALLY  
LEFT BLANK**