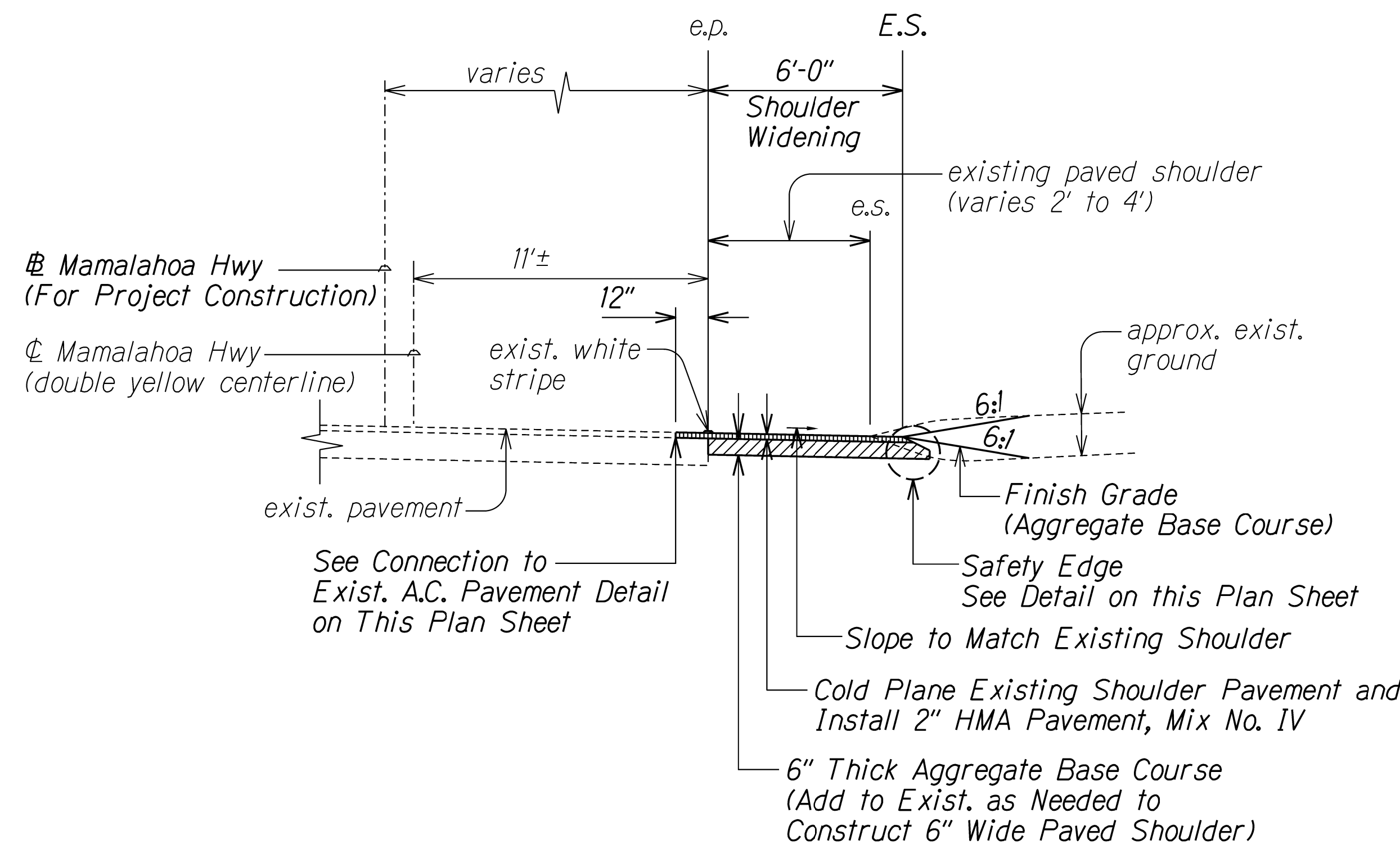
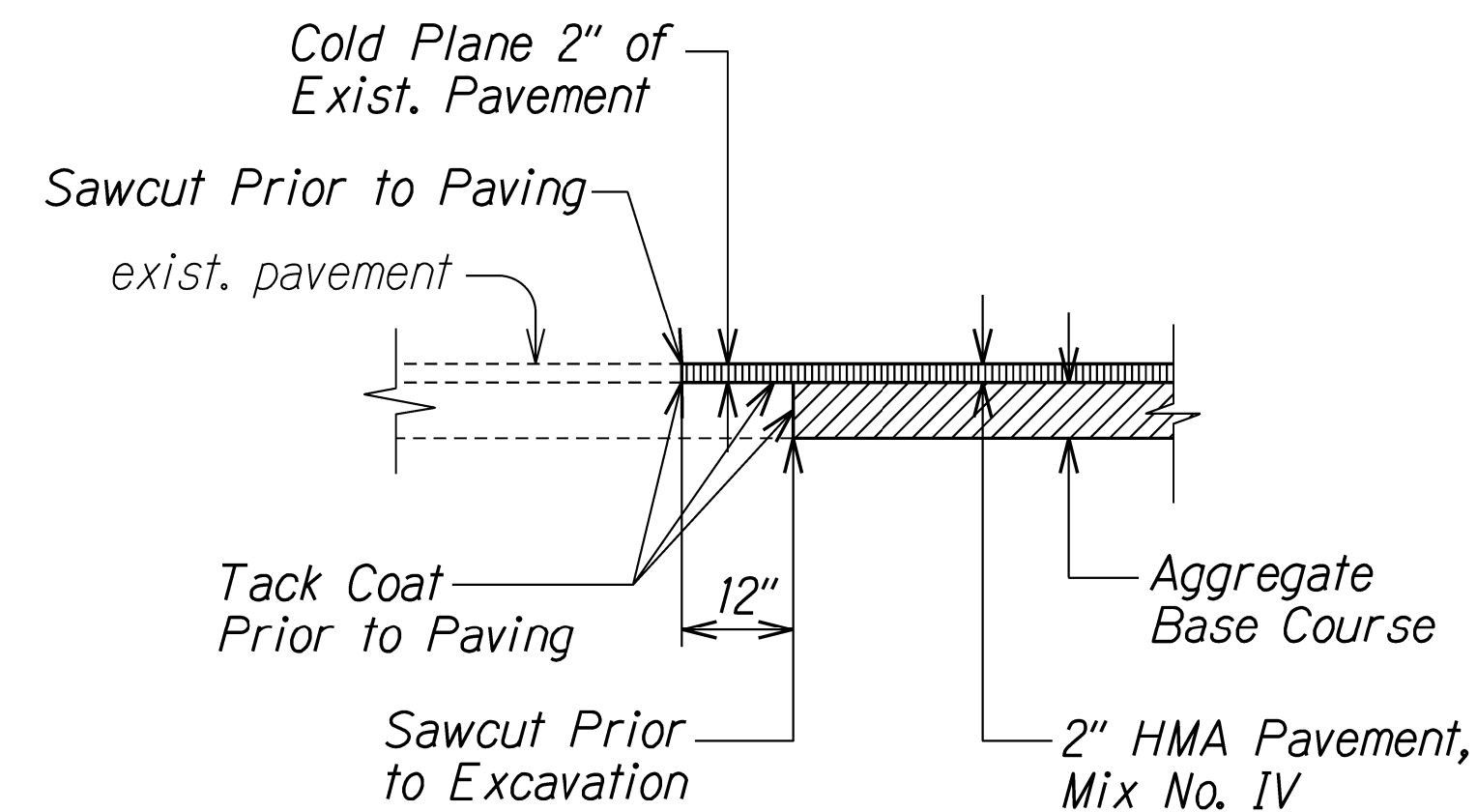


FED. ROAD DIST. NO.	STATE	FED. AID PROJ. NO.	FISCAL YEAR	SHEET NO.	TOTAL SHEETS
HAWAII	HAW.	HSIP-0190(017)	2021	7	27



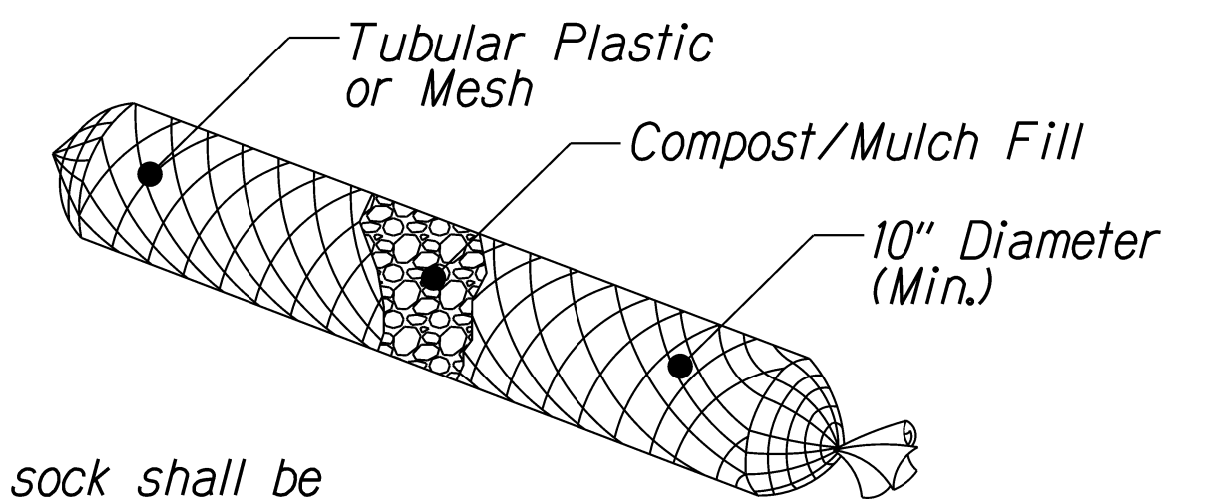
SECTION AT SHOULDER WIDENING

Not to Scale



CONNECTION TO EXISTING A.C. PAVEMENT DETAIL

Not to Scale

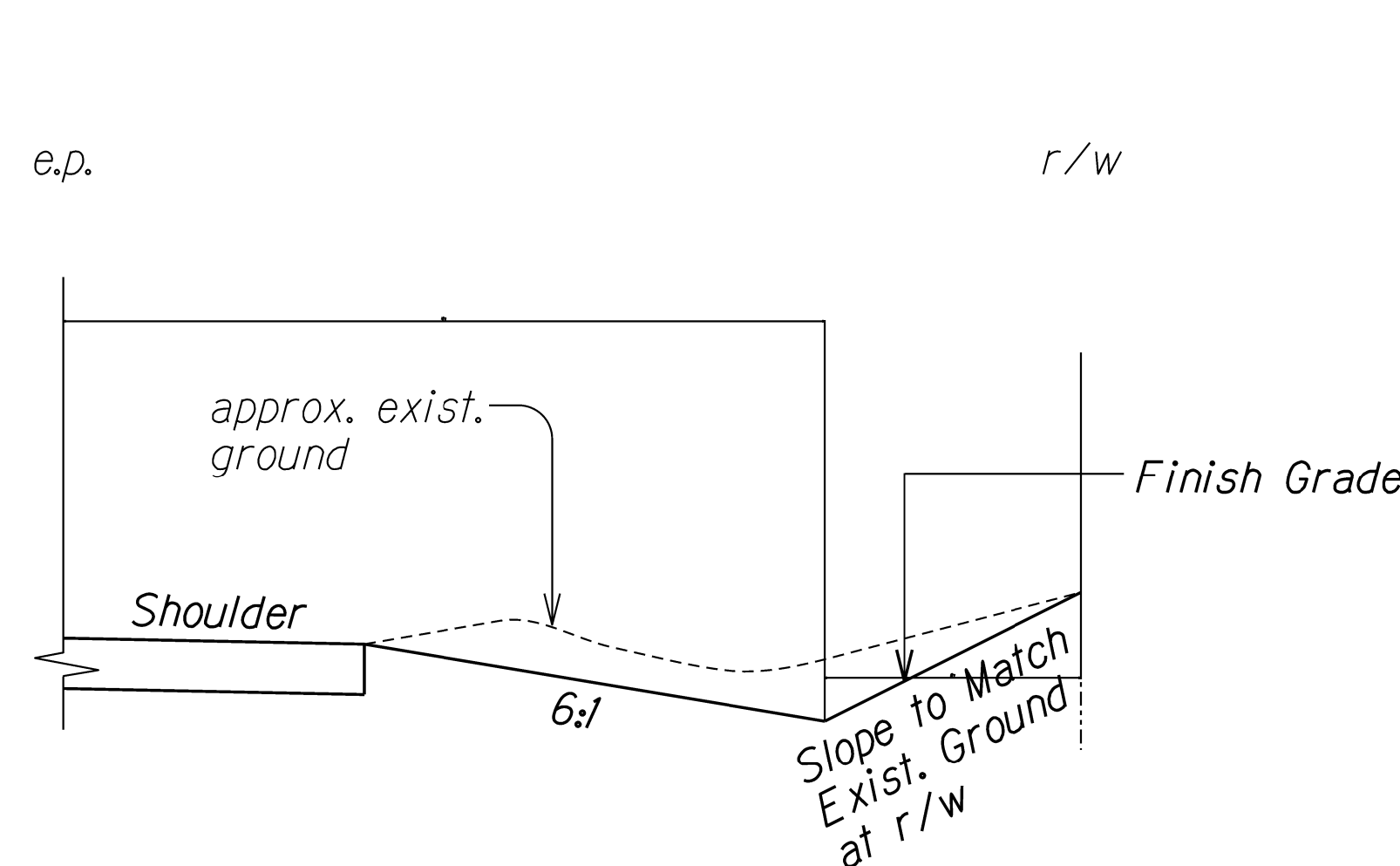


NOTES:

1. Filter sock shall be "Biosock" compost (by Envirotech Biosolutions) or pre-approved equal. Install per manufacturer's recommendations.
2. Filter sock shall not contain biosolids and shall be consistent with EPA guidelines.
3. Staking, where required, shall be installed per manufacturer's recommendations.
4. Minimum overlap shall be 2' on the horizontal plane.

FILTER SOCK DETAIL

Not to Scale

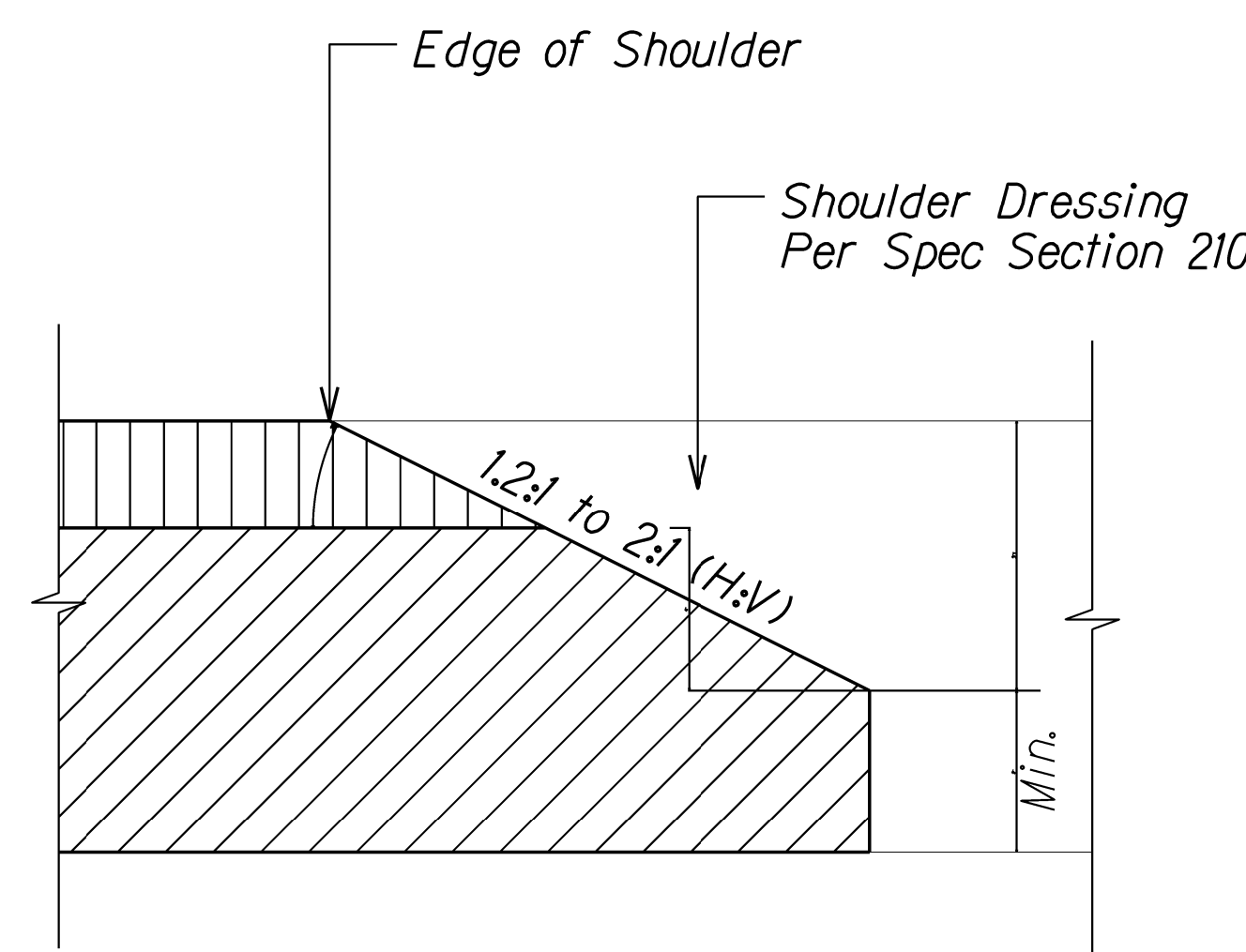


NOTES:

1. See Roadway Plan sheets for shoulder grading areas.
2. Hydromulch finished grade of graded area to match existing.

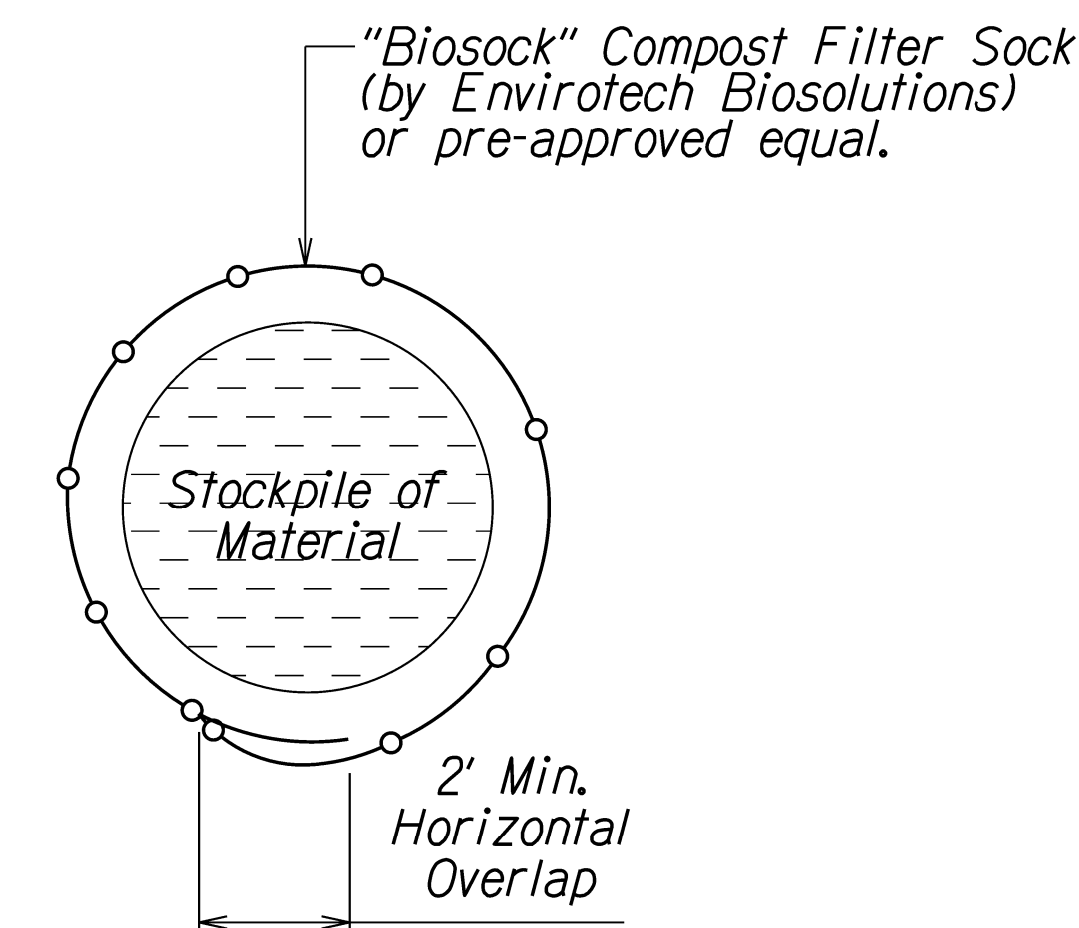
SECTION AT SHOULDER GRADING

Not to Scale



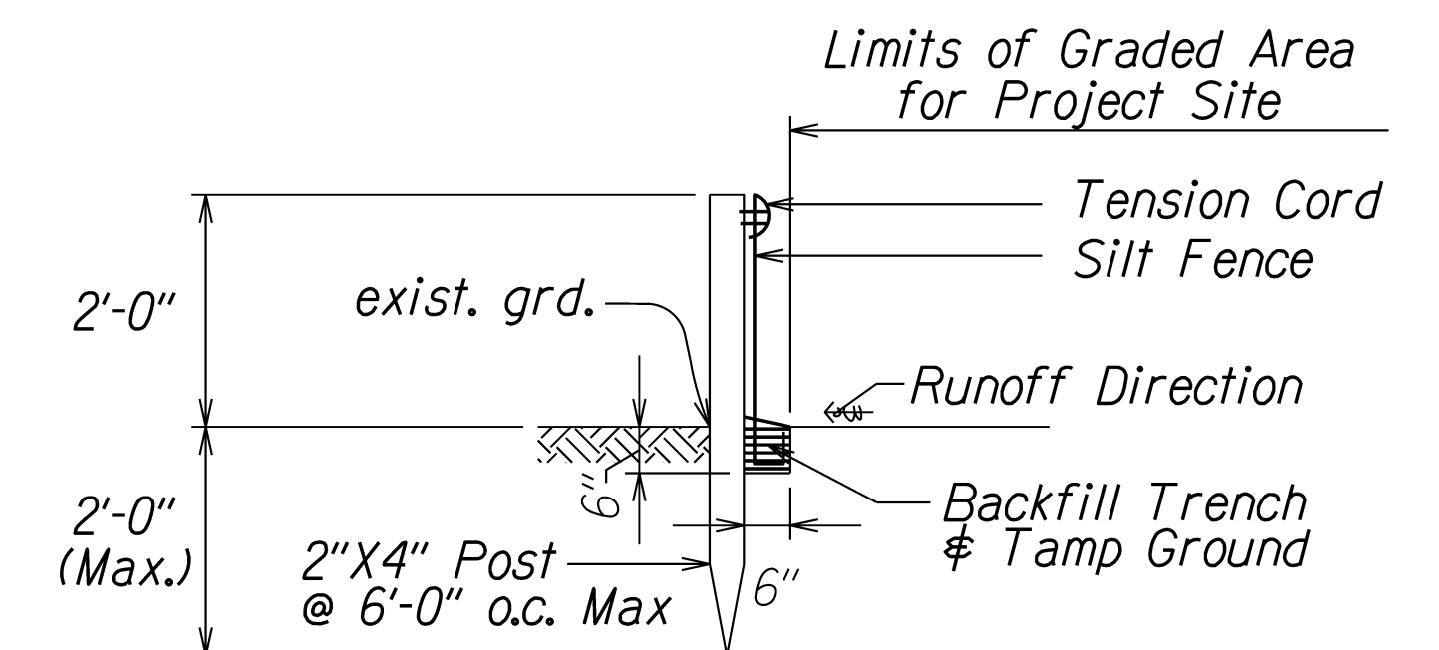
SAFETY EDGE DETAIL

Not to Scale



STOCKPILE PROTECTION DETAIL

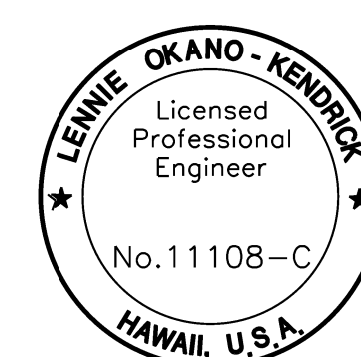
Not to Scale



(For Overland Flow Condition)

SILT FENCE DETAIL

Not to Scale



This work was prepared by me or under my supervision.
Lennie Okano-Kendrick
Expiration Date of License 4/22

STATE OF HAWAII
DEPARTMENT OF TRANSPORTATION
HIGHWAYS DIVISION
TYPICAL SECTION & DETAILS
MAMALAHOA HIGHWAY
SAFETY IMPROVEMENTS
Mile Post 3.90 to Mile Post 6.90
Federal Aid Project No. HSIP-0190(017)
Scale: Not to Scale Date: June 2020
SHEET No. 1 OF 1 SHEETS