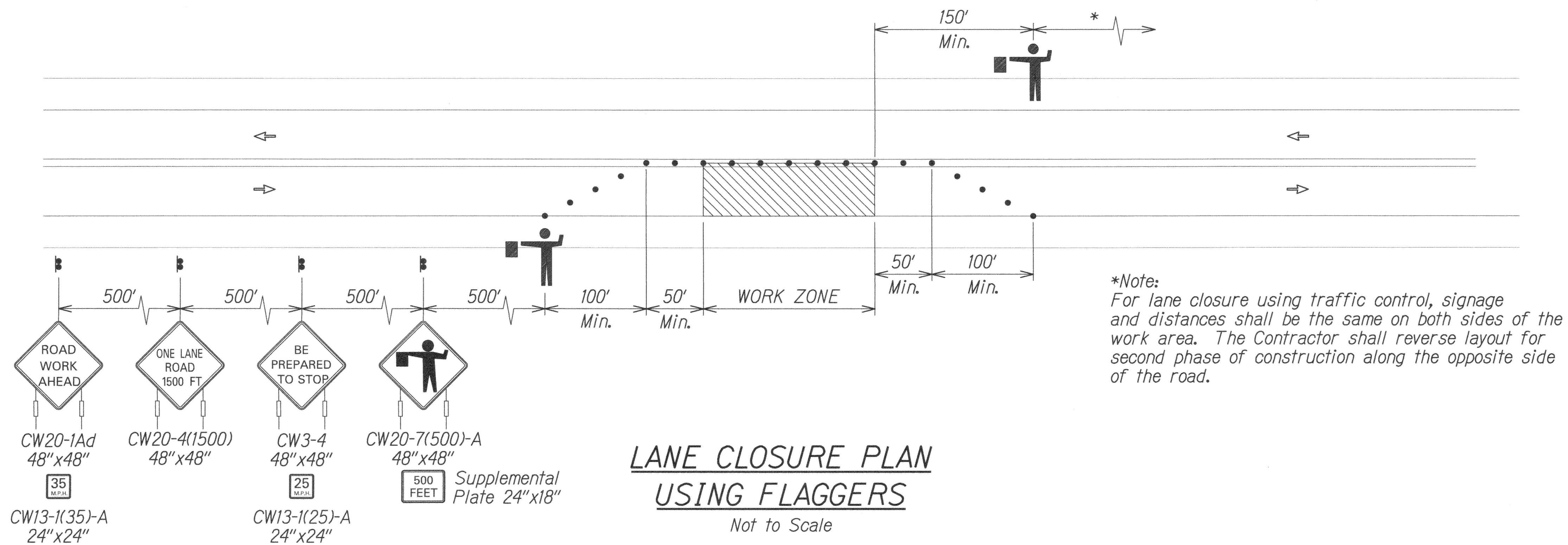


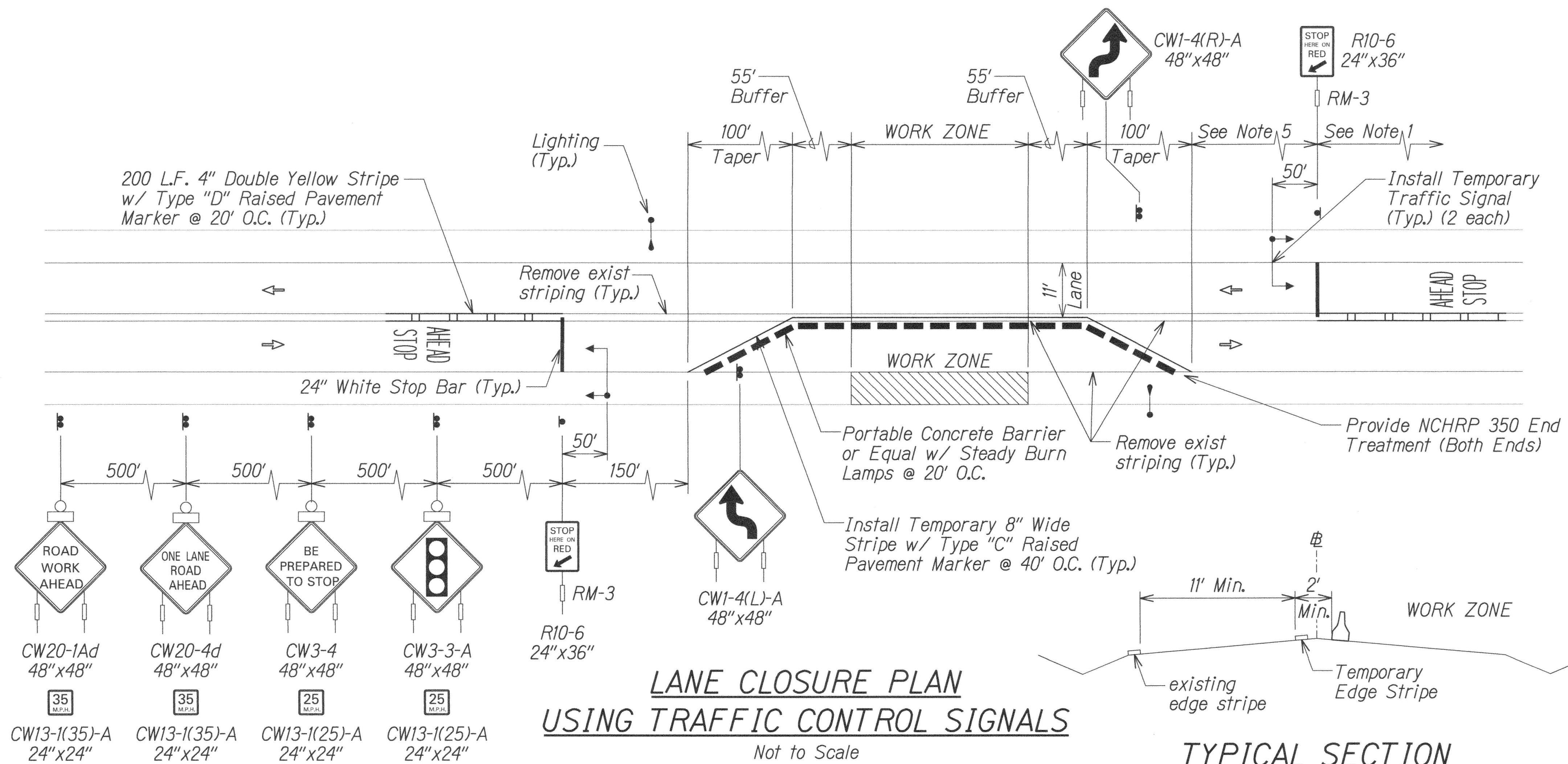
FED. ROAD DIST. NO.	STATE	FED. AID PROJ. NO.	FISCAL YEAR	SHEET NO.	TOTAL SHEETS
HAWAII	HAW.	STP-0190(016)	2016	22	36

### LEGEND

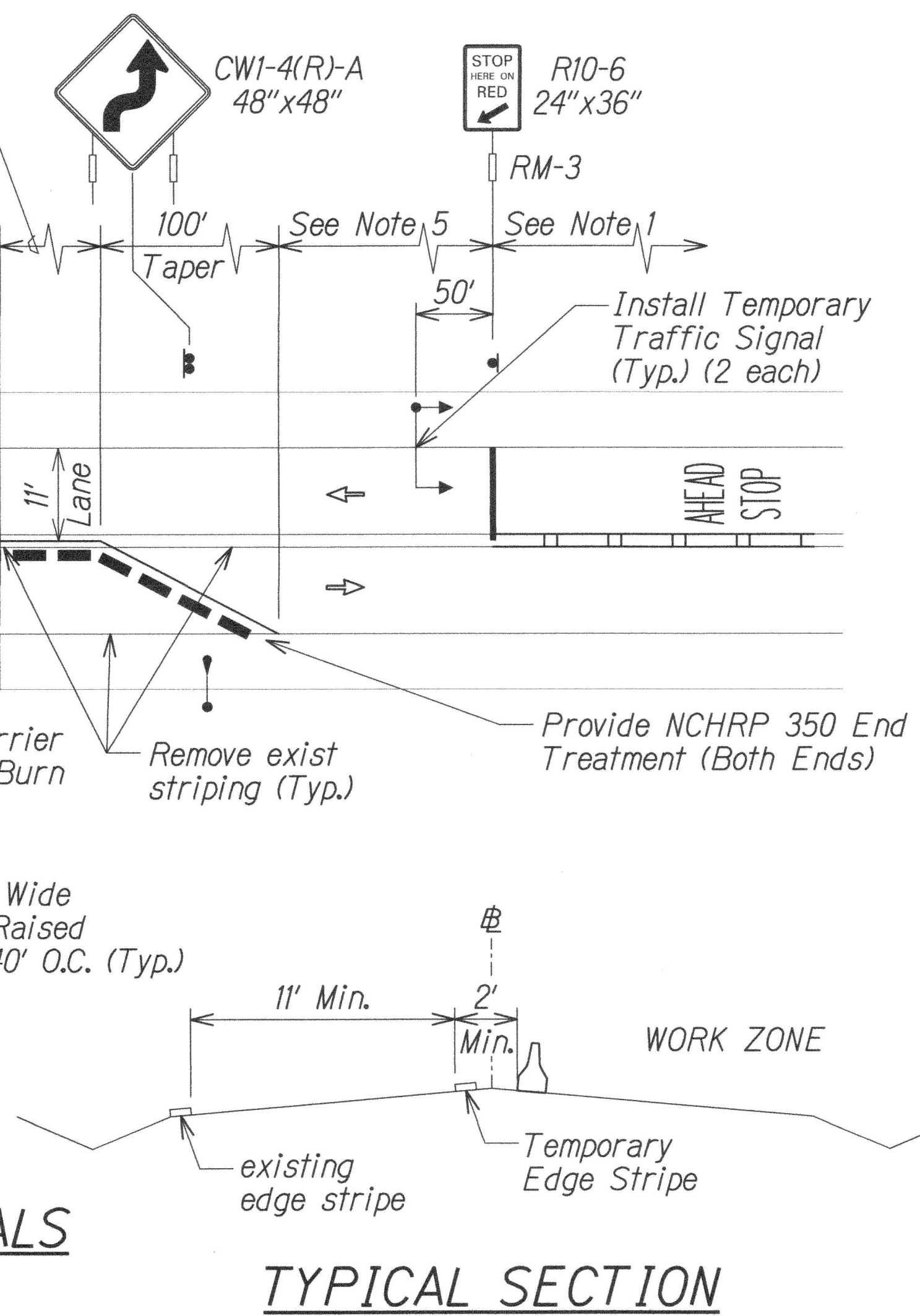
-  Work Area
-  Flagger/Police Officer
-  Vehicle Traffic Flow
-  Cones/Barricades (Typ.)
-  Sign
-  Lighting
-  Temporary Traffic Signal
-  Warning Lights
-  Portable Concrete Barriers (w/ NCHRP 350 End Treatment and Steady Burn Lamps @ 20' O.C.)



**LANE CLOSURE PLAN  
USING FLAGGERS**  
Not to Scale



**LANE CLOSURE PLAN  
USING TRAFFIC CONTROL SIGNALS**  
Not to Scale



**TYPICAL SECTION**

- NOTES:**
- For lane closure using traffic control signals, signage, striping and distances shall be the same on both sides of the work area. The Contractor shall reverse layout for second phase of construction along the opposite side of the road.
  - End treatments for Portable Concrete Barriers shall be considered incidental to item No. 645.2000 - Additional Police Officers, Additional Traffic Control Devices, and Advertisement.
  - The Contractor shall include the cost for removal and reinstallation of Portable Concrete Barriers, traffic control signs, etc. for construction phasing in the price of the various items. It will not be paid for separately.
  - The Contractor shall restore permanent pavement markings and signage to the pre-existing configuration upon completion of construction.
  - The Engineer will determine the location of this signal.

LENNIE OKANO - KENDRICK  
Licensed Professional Engineer  
No. 11108-C  
HAWAII, U.S.A.  
This work was prepared by me or under my supervision.  
*Lennie Okano-Kendrick*  
Expiration Date of License 4/18

STATE OF HAWAII  
DEPARTMENT OF TRANSPORTATION  
HIGHWAYS DIVISION

**TRAFFIC CONTROL PLANS**

**MAMALAHOA HIGHWAY**

**DRAINAGE IMPROVEMENTS**

**Vicinity of Puuwaawaa Ranch Road**

**Federal-Aid Project No. STP-0190(016)**

Scale: Not to Scale Date: April 2016

SHEET No. 1 OF 1 SHEETS