

INDEX TO DRAWINGS	
SHEET NO.	DESCRIPTION
1	TITLE SHEET
2	STANDARD PLANS SUMMARY
3	GENERAL NOTES & LEGEND
4-6	WATER POLLUTION & EROSION CONTROL NOTES
7	ROADWAY SWALE SECTIONS & DETAILS
8	RECONSTRUCTION ROADWAY PLAN
9	SITE PLAN
10	SWALE PLAN
11	DRAIN LINE PLAN & PROFILE
12	PAVEMENT MARKING PLAN, LEGEND, NOTES & TRAFFIC SIGNING PLAN
13-17	CIVIL DETAILS
18-20	CROSS SECTIONS
21	TRAFFIC NOTES
22	TRAFFIC CONTROL PLANS
23	WORK ZONE SIGNING PLAN, NOTES & LEGEND
24-28	SLOPE LOGS, BORING LOGS, & BORING LEGEND
29	STRUCTURAL GENERAL NOTES
30	TYPICAL DETAILS
31-32	TIE-BACK RETAINING WALL NO. 1 PLAN & ELEVATION
33	TIE-BACK RETAINING WALL NO. 2 PLAN & ELEVATION
34	TYPICAL TIE-BACK WALL SECTION
35	TIE-BACK WALL DETAILS
36	MISCELLANEOUS DETAILS

STATE OF HAWAII

DEPARTMENT OF TRANSPORTATION

HIGHWAYS DIVISION

HONOLULU, HAWAII

"AS-BUILT"

PLANS FOR

MAMALAHOA HIGHWAY

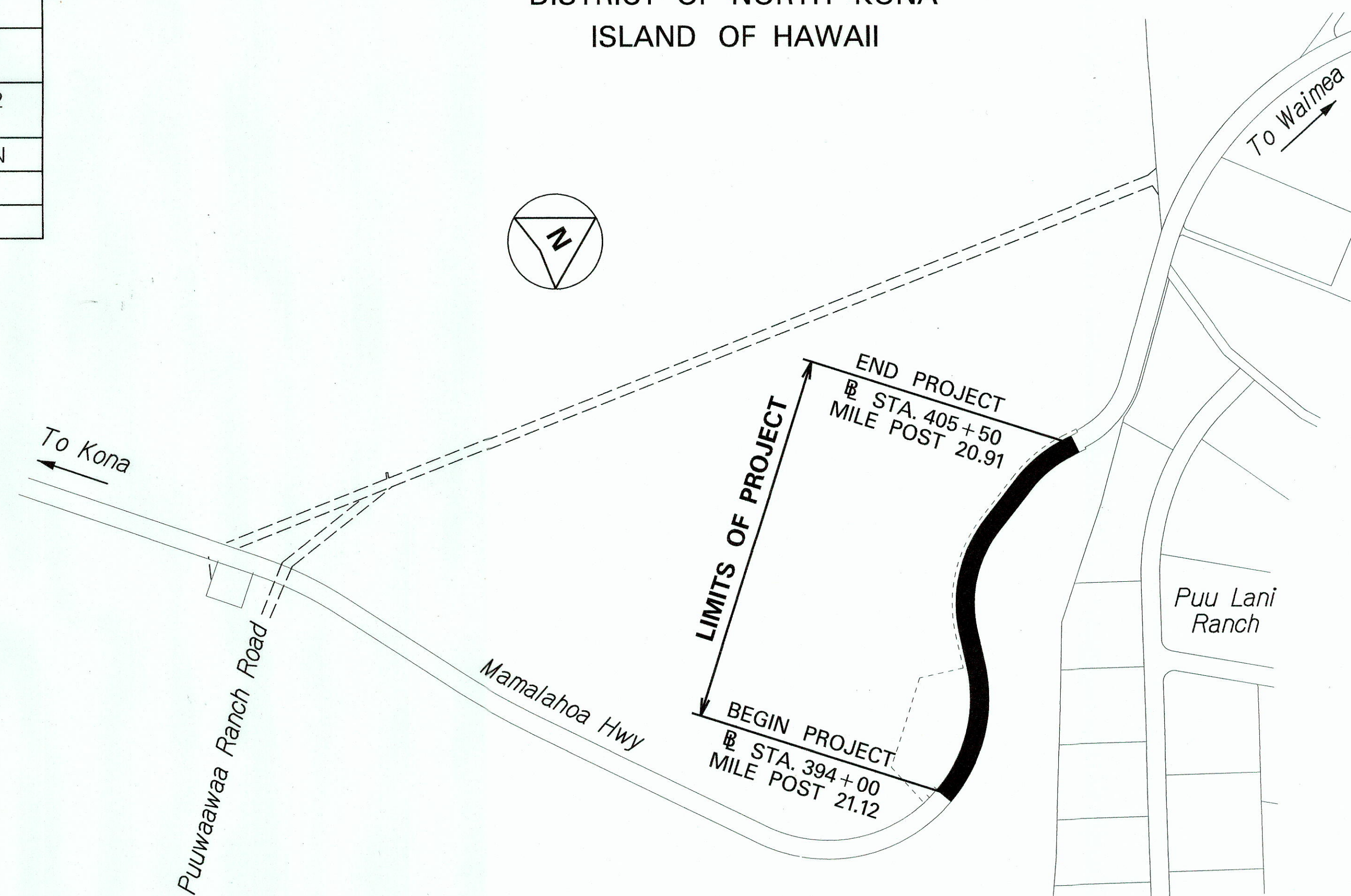
DRAINAGE IMPROVEMENTS

VICINITY OF PUUWAAWAA RANCH ROAD

FEDERAL-AID PROJECT NO. STP-0190(016)

DISTRICT OF NORTH KONA

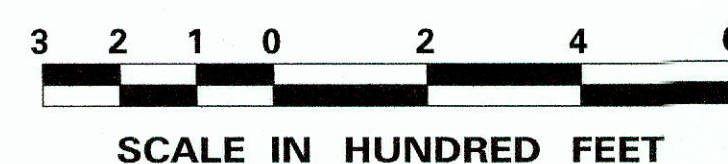
ISLAND OF HAWAII



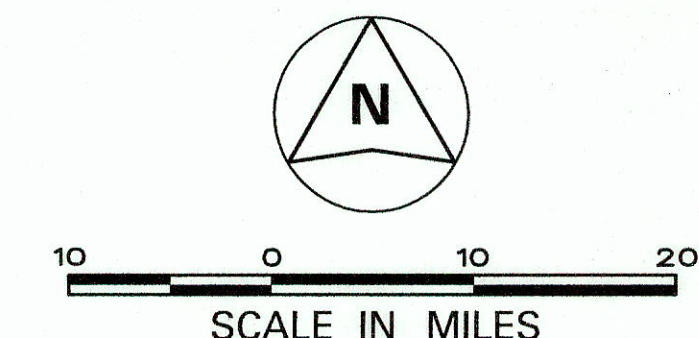
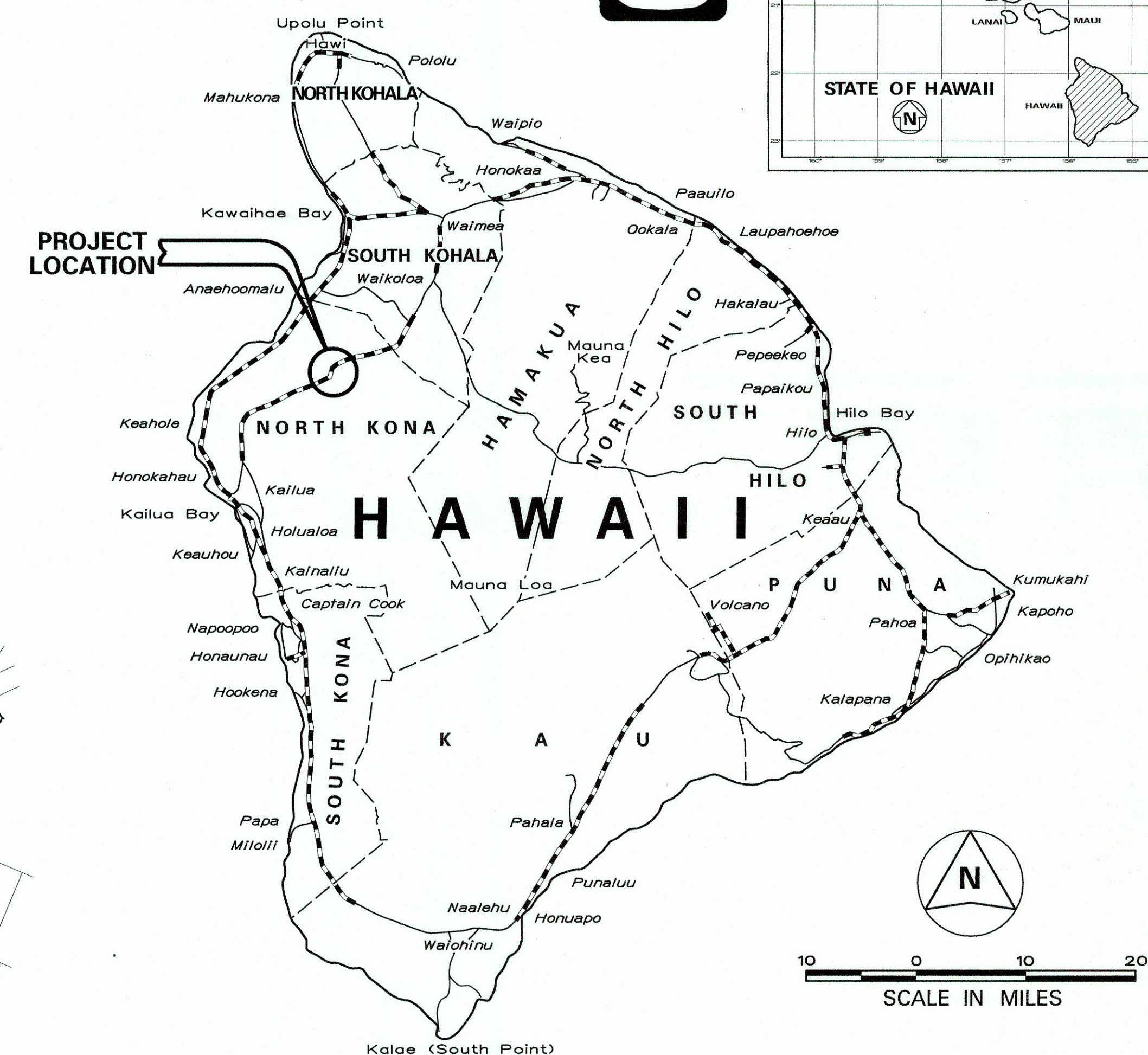
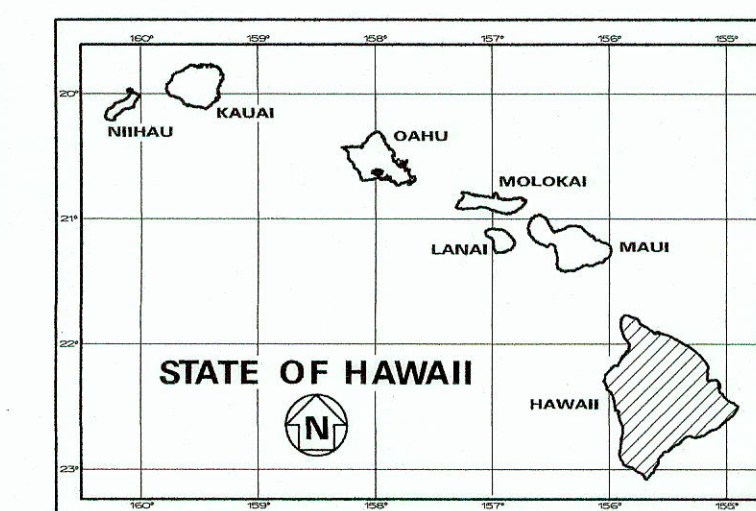
LAYOUT PLAN

GROSS LENGTH OF PROJECT.....0.21 MILES

NET LENGTH OF PROJECT.....0.21 MILES



FED. ROAD DIST. NO.	STATE	FED. AID PROJ. NO.	FISCAL YEAR	SHEET NO.	TOTAL SHEETS
HAWAII	HAW.	STP-0190(016)	2016	1	36



----- FEDERAL AID PROJECTS PREVIOUSLY CONSTRUCTED OR UNDER CONSTRUCTION

MILE POST 20.91 TO MILE POST 21.12

DESIGN DESIGNATION

ADT (2013)..... 4,000

ADT (2033)..... 6,200

DHV 590

D 55/45

T 6.5%

V 35 M.P.H.

CHANGES MADE DURING CONSTRUCTION HAVE BEEN INCORPORATED ON THESE PLANS EXCEPT CHANGES IN THE ORIGINAL THEORETICAL QUANTITIES. FOR ACTUAL QUANTITIES, REFER TO PROJECT LEDGER AND/OR COMPUTATION BOOK.

RESIDENT ENGINEER

4/20/18

DATE

DEPARTMENT OF TRANSPORTATION

STATE OF HAWAII

APPROVED:

DIR. OF TRANSPORTATION

DATE

Okahara and Assoc., Inc.

DESIGNED BY

HWY-DH

MANAGED BY

692-7561

PHONE

April 2016

DATE