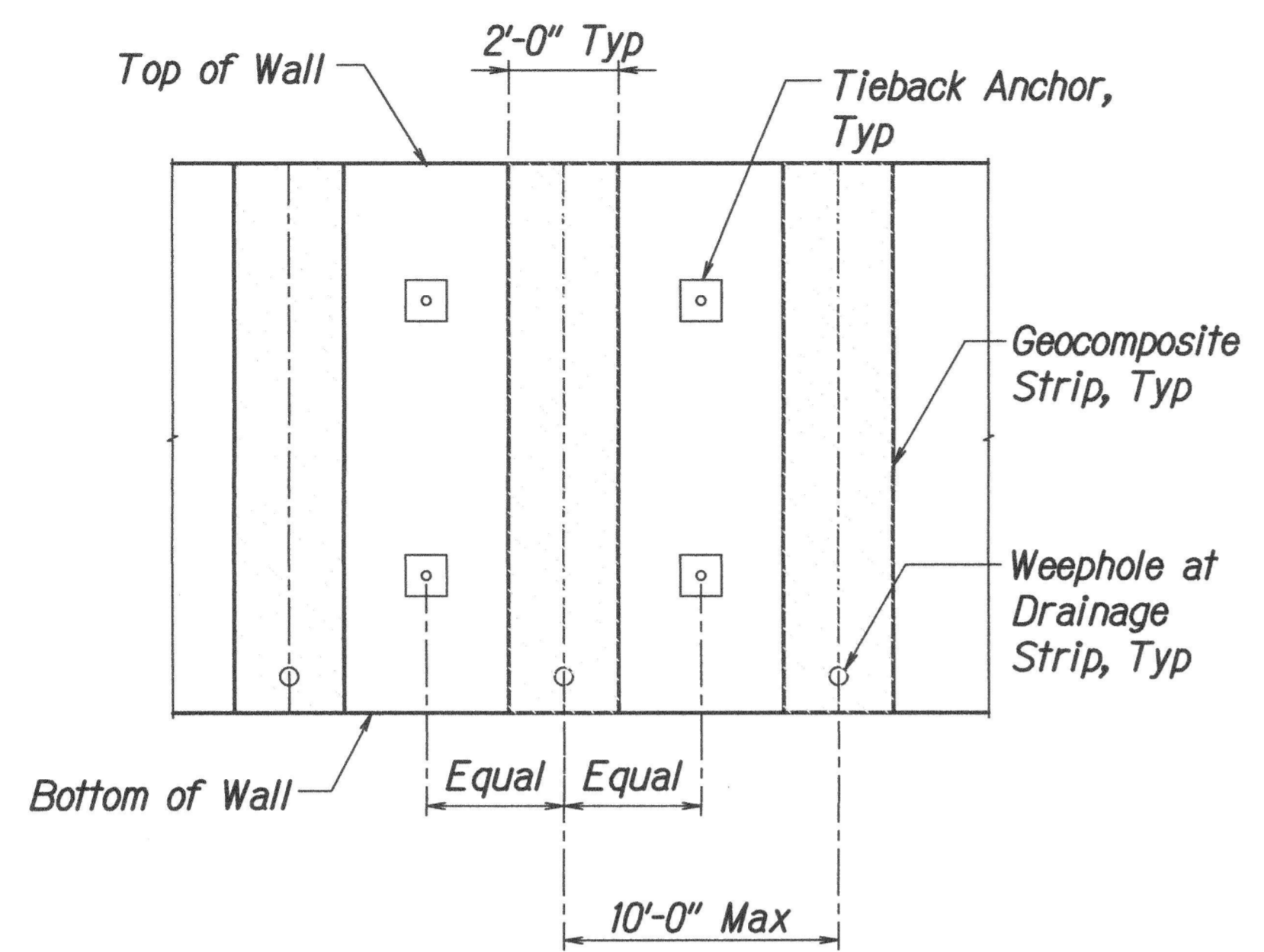
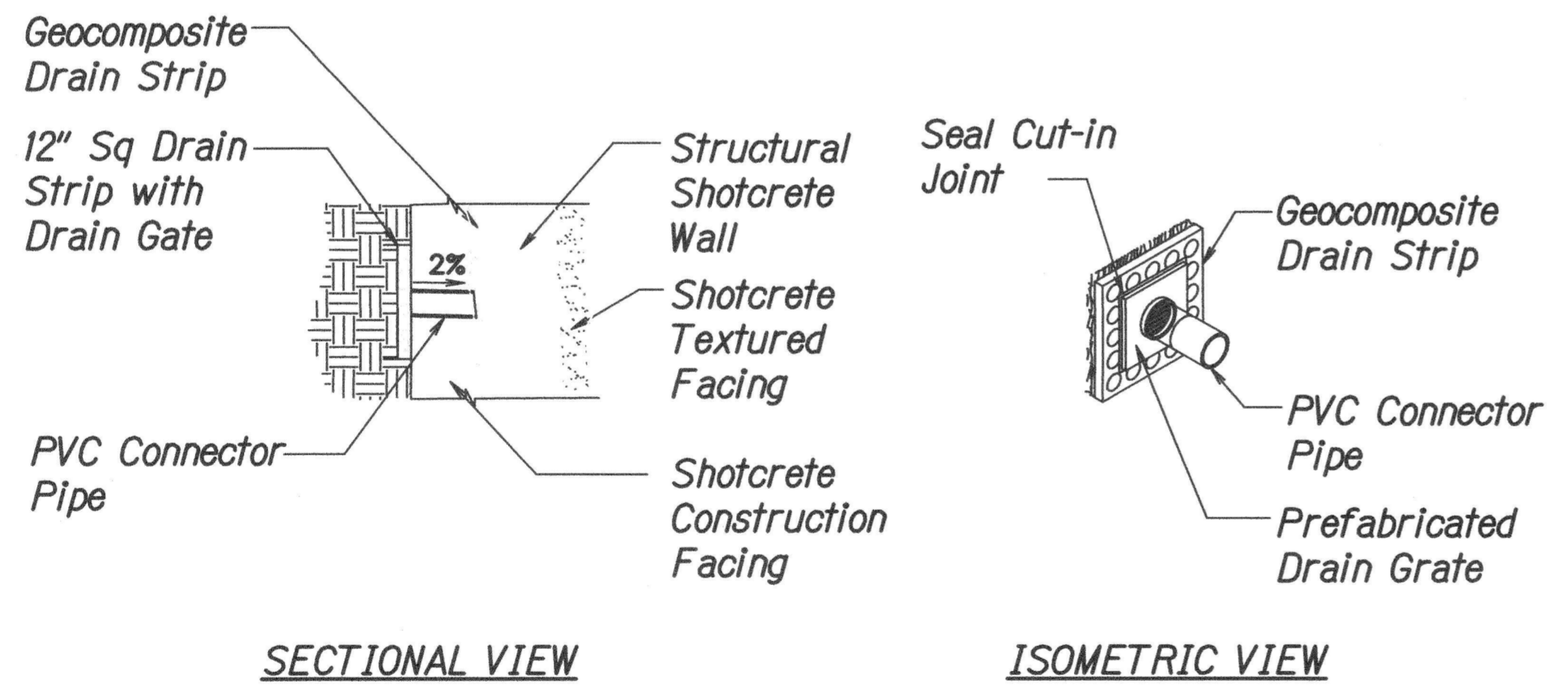


| FED. ROAD DIST. NO. | STATE | FED. AID PROJ. NO. | FISCAL YEAR | SHEET NO. | TOTAL SHEETS |
|---------------------|-------|--------------------|-------------|-----------|--------------|
| HAWAII              | HAW.  | STP-0190(016)      | 2016        | 36        | 36           |

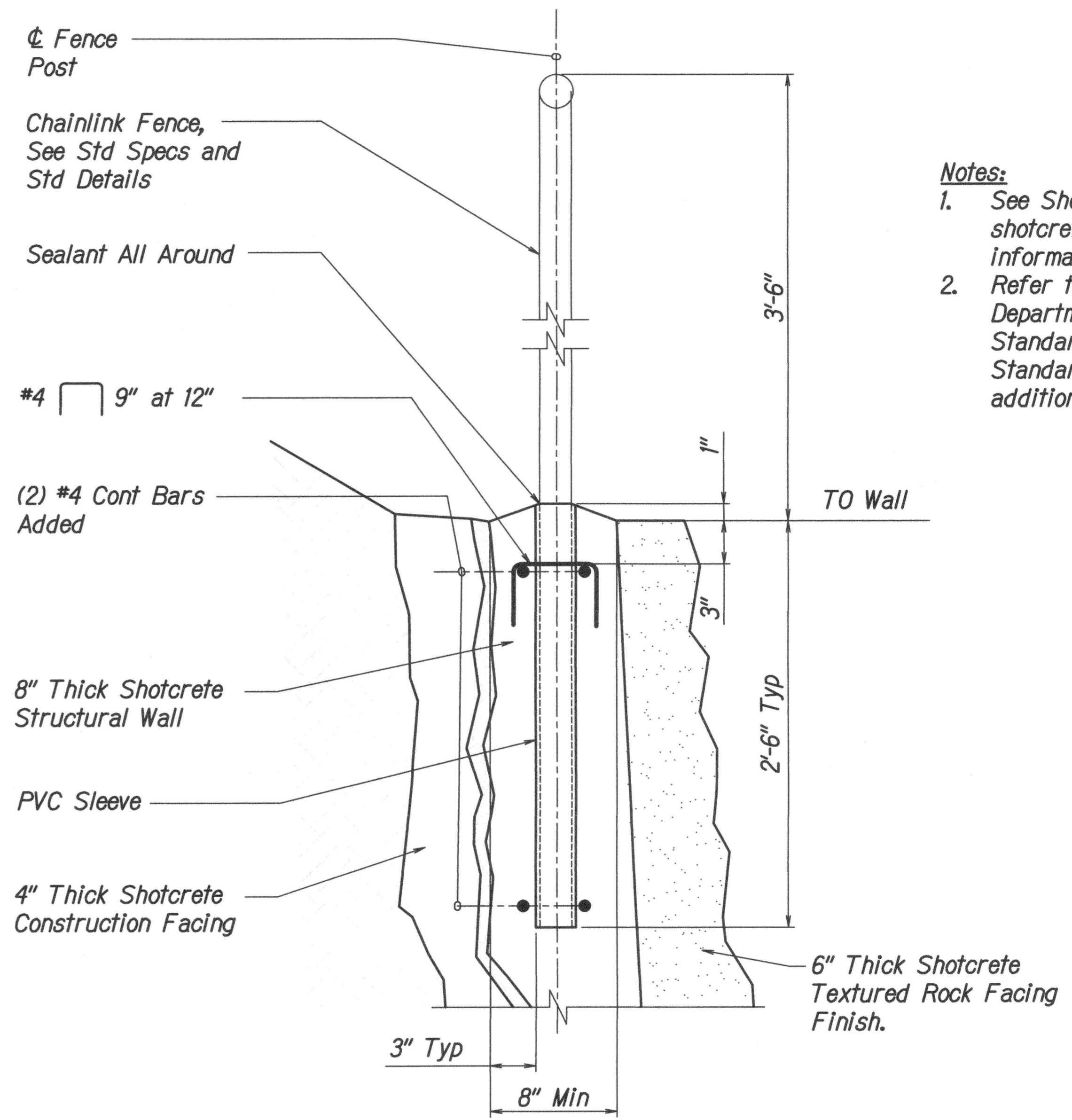


**ELEVATION**  
**GEOCOMPOSITE DRAINAGE DETAIL**  
 Not to Scale 1  
36 | 36



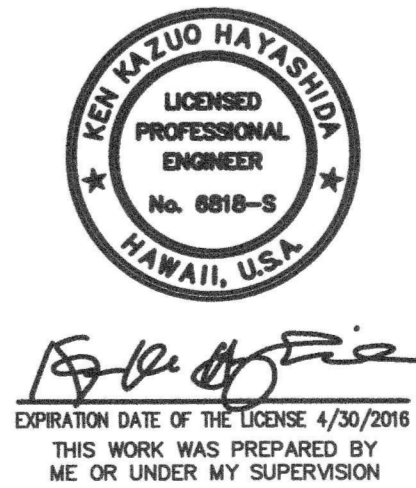
**SECTIONAL VIEW** **ISOMETRIC VIEW**

**DRAIN GATE DETAILS**  
 Not to Scale 2  
36 | 36



- Notes:**
1. See Sheet 34 for remaining shotcrete wall reinforcement information.
  2. Refer to the State of Hawaii Department of Transportation Standard Plans, Detail D-3 and Standard Specifications for additional chain link information.

**TYPICAL CHAINLINK FENCE POST DETAIL**  
 Not to Scale 3  
36 | 36



STATE OF HAWAII  
DEPARTMENT OF TRANSPORTATION  
HIGHWAYS DIVISION

**MISCELLANEOUS DETAILS**  
MAMALAHOA HIGHWAY  
DRAINAGE IMPROVEMENTS  
Vicinity of Puuwaawaa Ranch Road  
Federal Aid Project No. STP-0190(016)  
Scale: As Noted      Date: April 2016

SHEET No. 8 OF 8 SHEETS