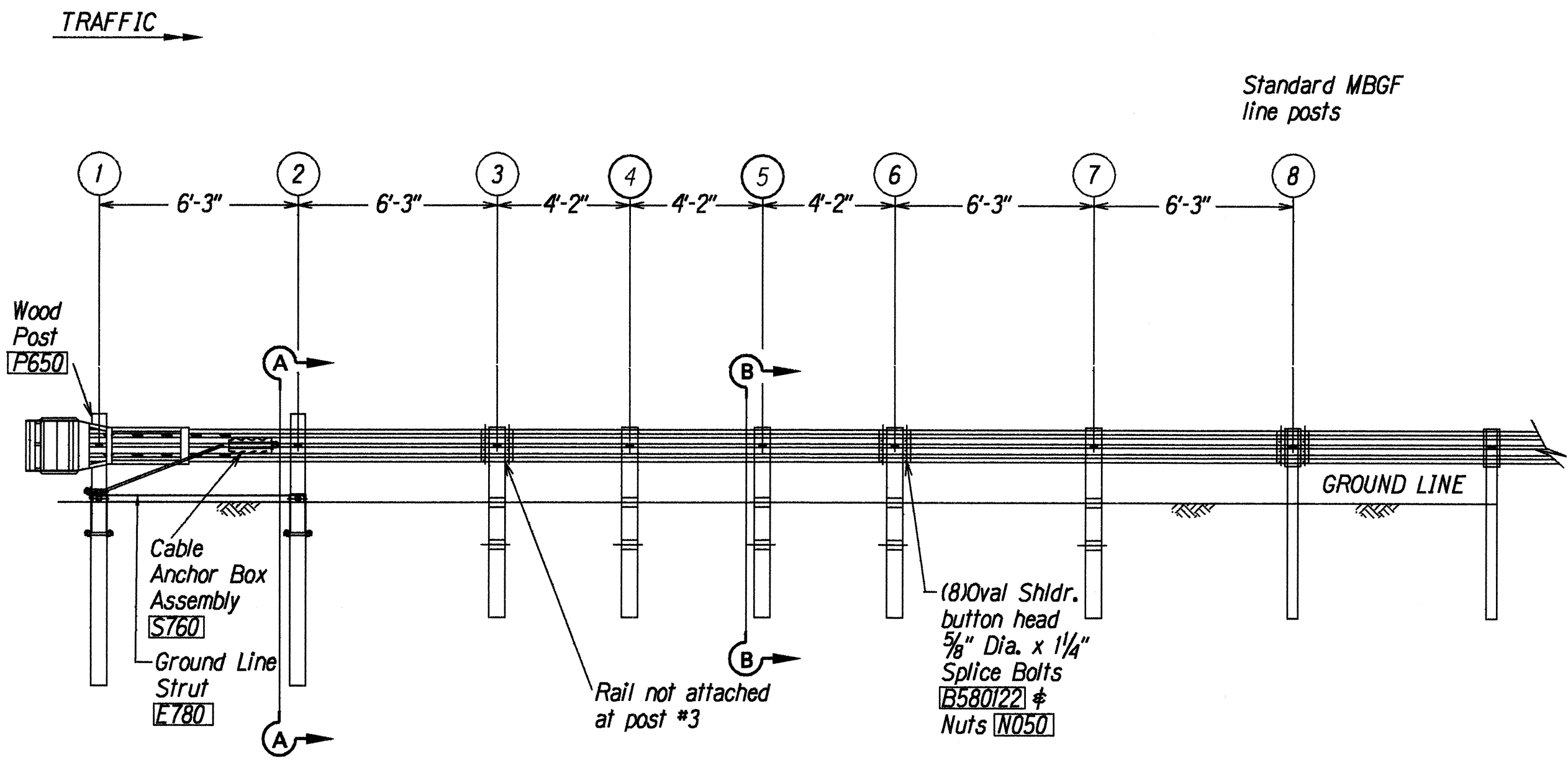
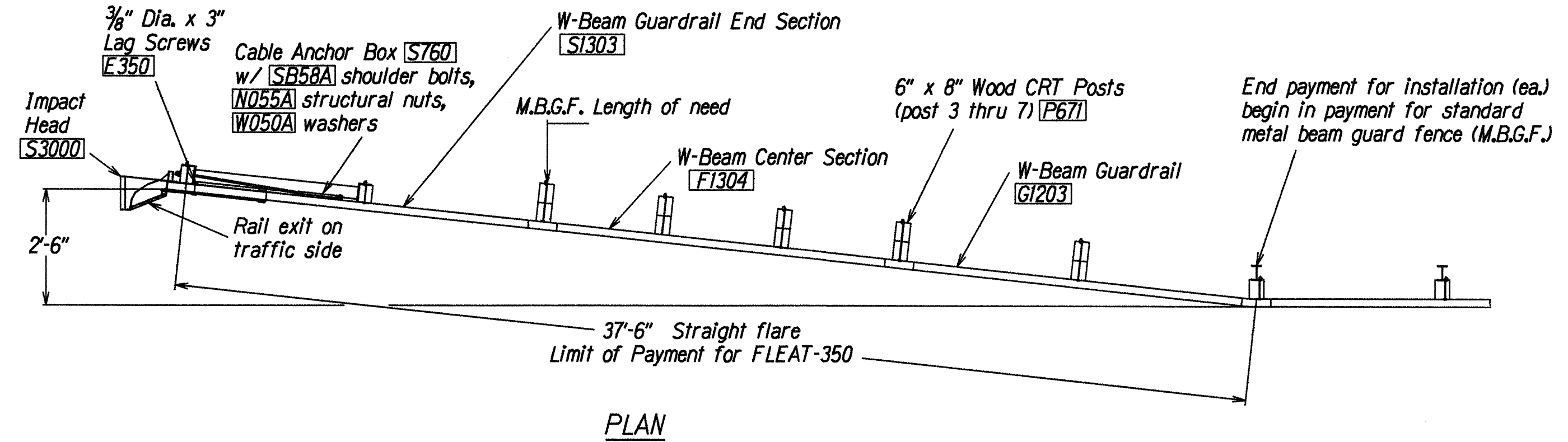


FED. ROAD DIST. NO.	STATE	FED. AID PROJ. NO.	FISCAL YEAR	SHEET NO.	TOTAL SHEETS
HAWAII	HAW.	BR-0190(13)	1999	60	75



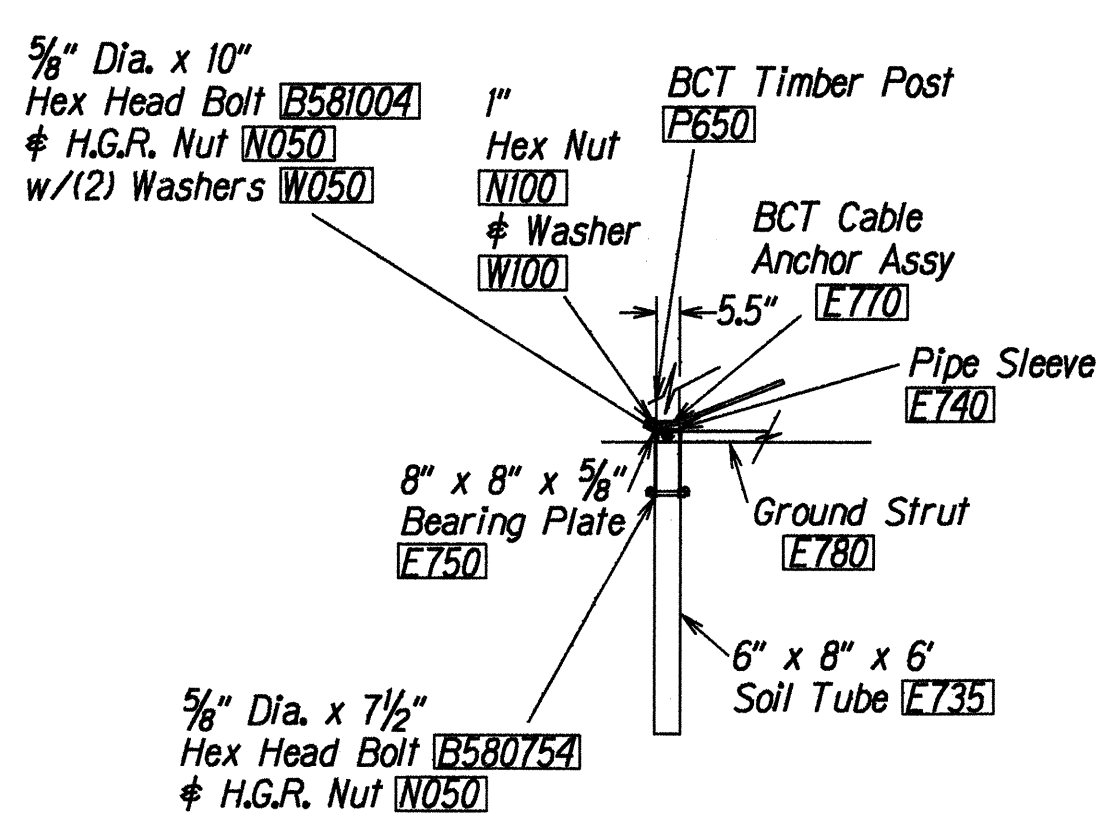
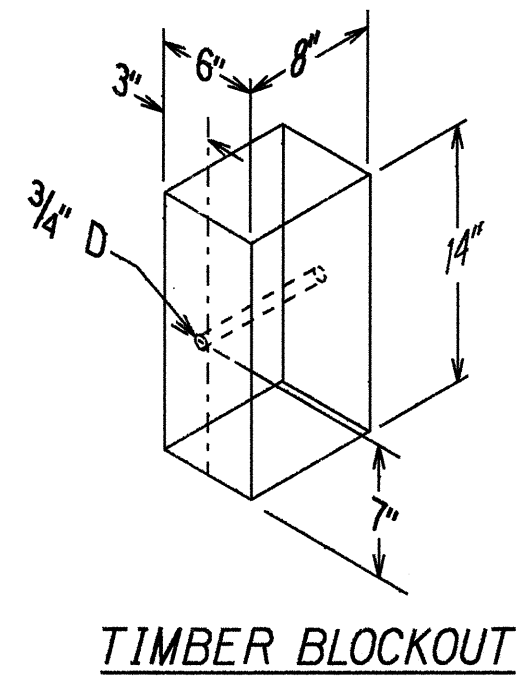
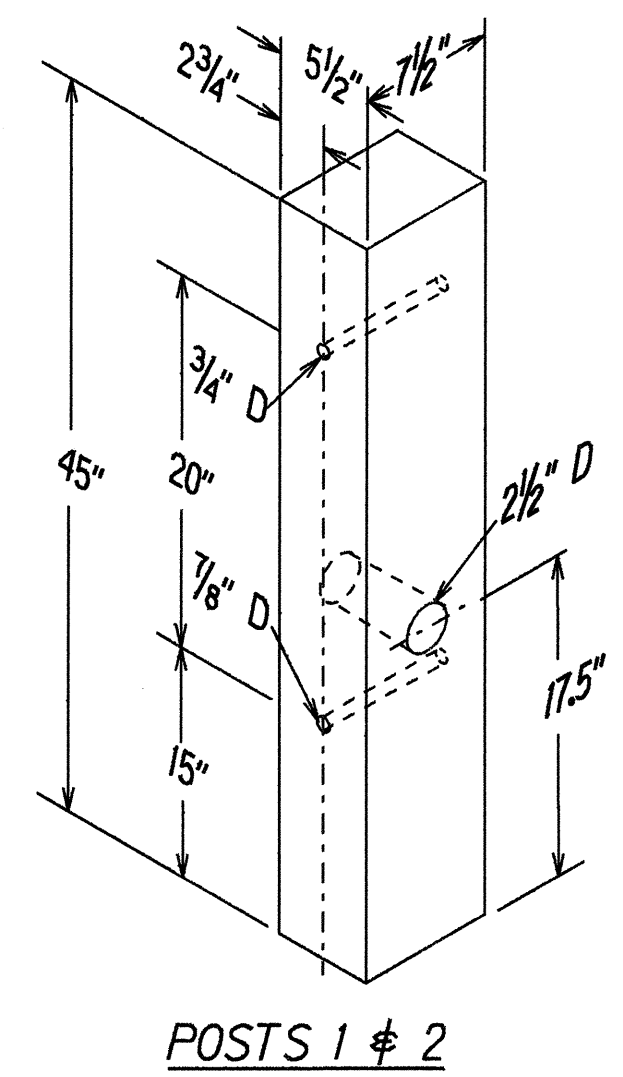
### GENERAL NOTES

1. Wood posts are required with the fleat.
2. All bolts, nuts, cable assemblies, cable anchors and bearing plates shall be galvanized.
3. The soil tube shall not protrude more than 4" above ground (measured along a 5' cord). Site grading may be necessary to meet this requirement.
4. The soil tubes may be driven with an approved driving head. They shall not be driven with the wood post in the tube. If the soil tubes are placed in drilled holes, the backfill material must be satisfactorily compacted to prevent settlement.
5. When rock is encountered during excavation, a 12" Dia. post hole, 20" deep may be used if approved by the engineer. Granular material will be placed in the bottom of the hole approx. 2 1/2" deep to provide drainage. The soil tubes will be field cut to length, placed in the hole and backfilled with adequately compacted material excavated from the hole.
6. The breakaway cable assembly must be taut. A locking device, (vice grips or channel lock pliers) should be used to prevent the cable from twisting when tightening nuts.
7. The wood blockouts shall be "toe nailed" to the rectangular wood posts to prevent them from turning when the wood shrinks.
8. For curb installations, the soil tubes and posts shall be installed at the proper ground elevation behind the curb. The posts will require field drilling new holes to accommodate the rail to the post connecting bolt to maintain the proper height of the rail above the gutter pan. The excess post length above the rail will be removed if directed by the engineer.

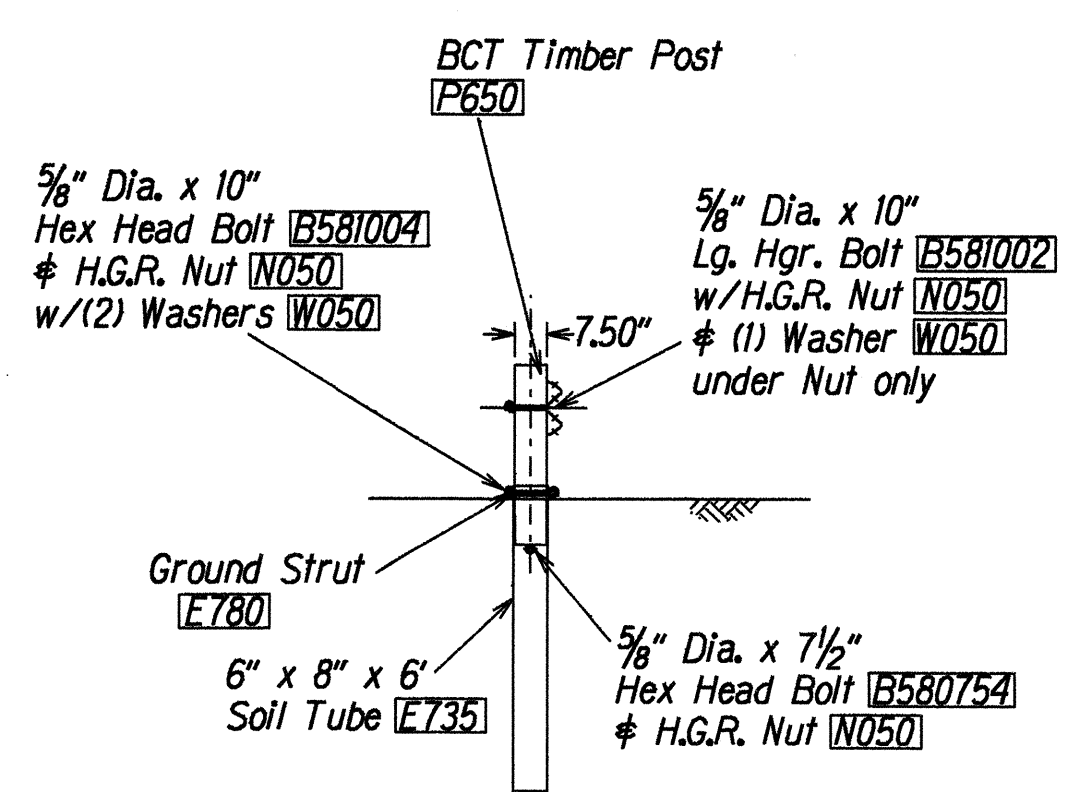
ITEM NO.	QTY	BILL OF MATERIALS
S3000	1	IMPACT HEAD
F1303	1	W-BEAM GUARDRAIL END SECTION, 12 GA.
F1304	1	W-BEAM GUARDRAIL CENTER SEC., 12 GA.
G1203	1	W-BEAM GUARDRAIL, 12 GA.
S730	2	*FOUNDATION SOIL TUBE, 6" x 8" x 6'
E740	1	PIPE SLEEVE
E750	1	BEARING PLATE, 8" x 8" x 5/8"
S760	1	CABLE ANCHOR BOX
E770	1	BCT CABLE ANCHOR ASSEMBLY
E780	1	GROUND STRUT
P650	2	5.5" x 7.5" x 45" WOOD POSTS
P671	5	6" x 8" x 6' WOOD CRT POST
P675	5	6" x 8" x 14" TIMBER BLOCKOUT
HARDWARE		
B580122	24	5/8" Dia. x 1 1/4" SPLICE BOLT
B580754	2	5/8" Dia. x 7 1/2" HEX BOLT
B581004	2	5/8" Dia. x 10" HEX BOLT
B581002	1	5/8" Dia. x 10" H.G.R. BOLT (POST 2 ONLY)
B581802	5	5/8" Dia. x 18" H.G.R. BOLT (POST 3-7)
N050	34	5/8" Dia. H.G.R. NUT (SPLICE 24, SOIL TUBES 2, STRUT 2, POST 2, 4, POST 3 THRU 7, 5)
W050	10	5/8" Dia. H.G.R. WASHER
N100	2	1" ANCHOR CABLE HEX NUT
W100	2	1" ANCHOR CABLE WASHER
E350	2	3/8" x 3" LAG SCREW
SB58A	8	CABLE ANCHOR BOX SHOULDER BOLTS
N055A	8	1/2" A325 STRUCTURAL NUTS
W050A	16	1 1/16" OD x 3/16" ID A325 STR. WASHER

### Foundation Tube Options For Posts 1 & 2

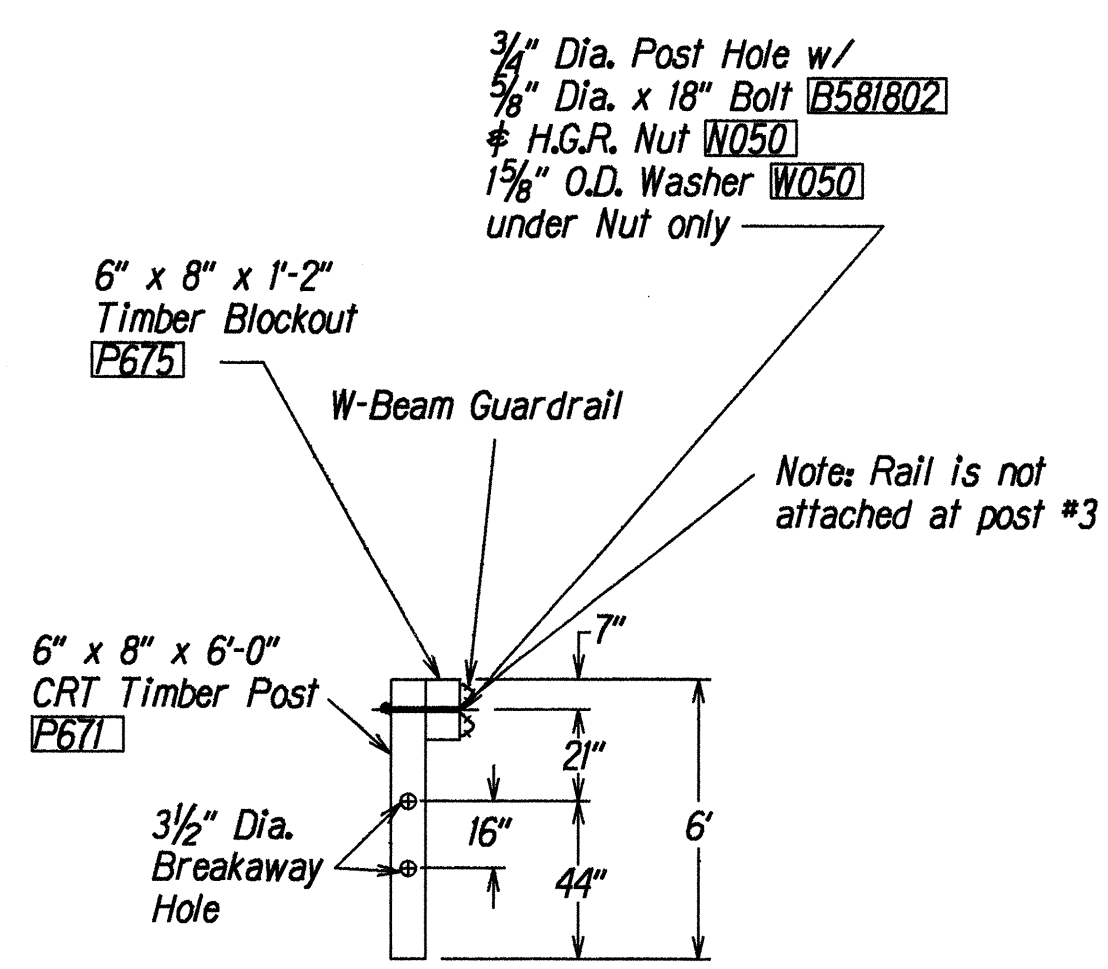
- \*6'-0" Split Foundation Tubes S730
- \*6'-0" Solid Foundation Tubes E731
- \*5'-0" Foundation Tubes S735 W/Soil Plates SP600
- \*4'-6" Foundation Tubes E735 W/Soil Plates SP600



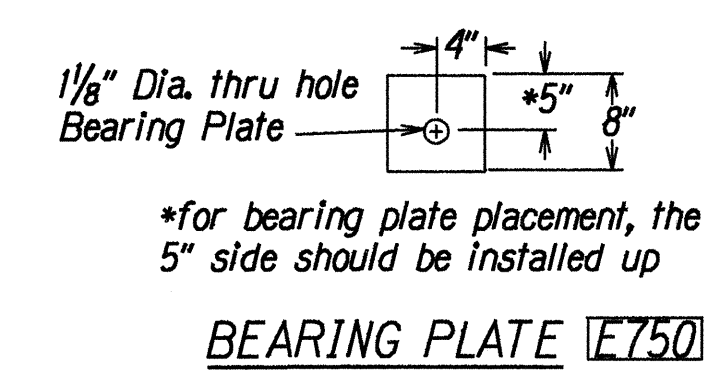
PARTIAL VIEW OF POST 1



SECTION A-A at Post #2



SECTION B-B typical @ Post 3 - 7



BEARING PLATE E750

STATE OF HAWAII  
DEPARTMENT OF TRANSPORTATION  
HIGHWAYS DIVISION

**FLEAT-350**

**FLARED ENERGY ABSORBING TERMINAL**

HAWAII BELT ROAD  
Replacement of Auwaiakeakua  
and Popoo Bridges  
Federal Aid Proj. No. BR-0190(13)

Not to Scale Date: March 1999

SHEET No. 1 OF 1 SHEETS