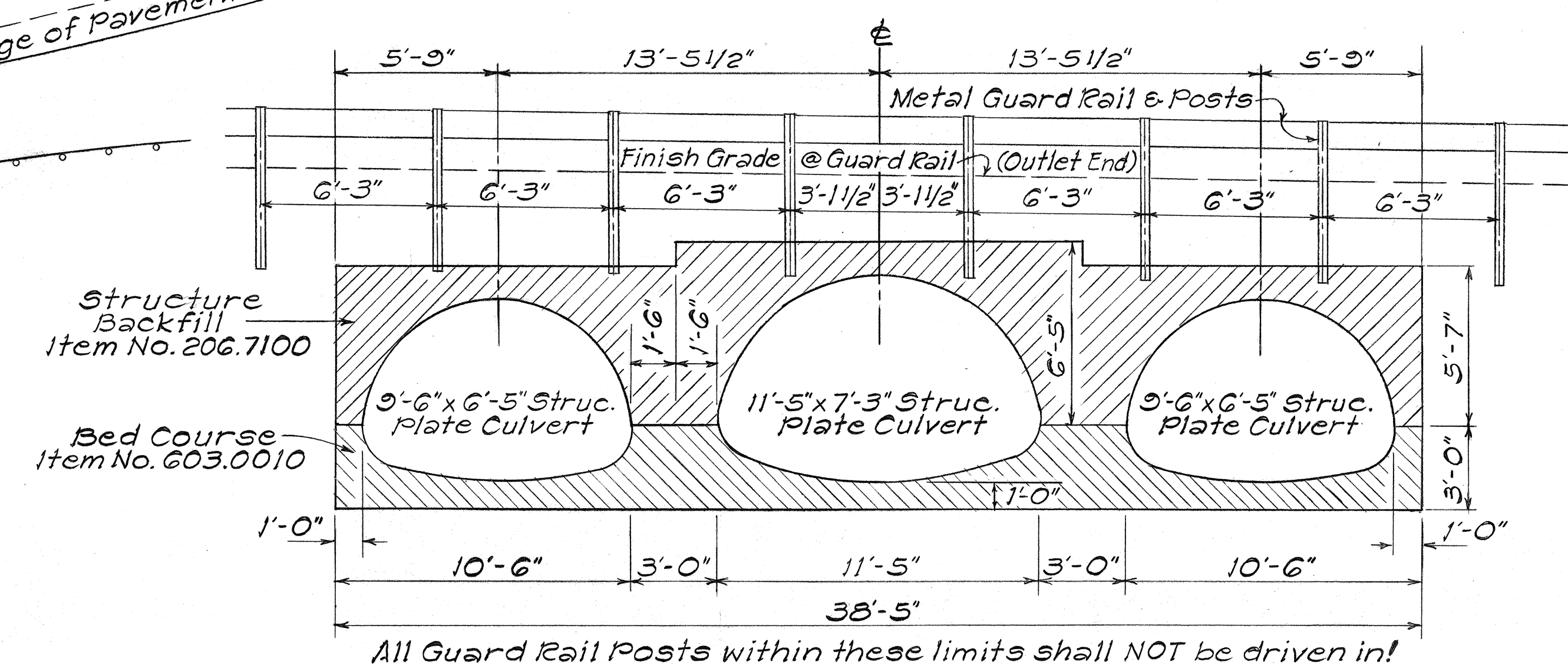
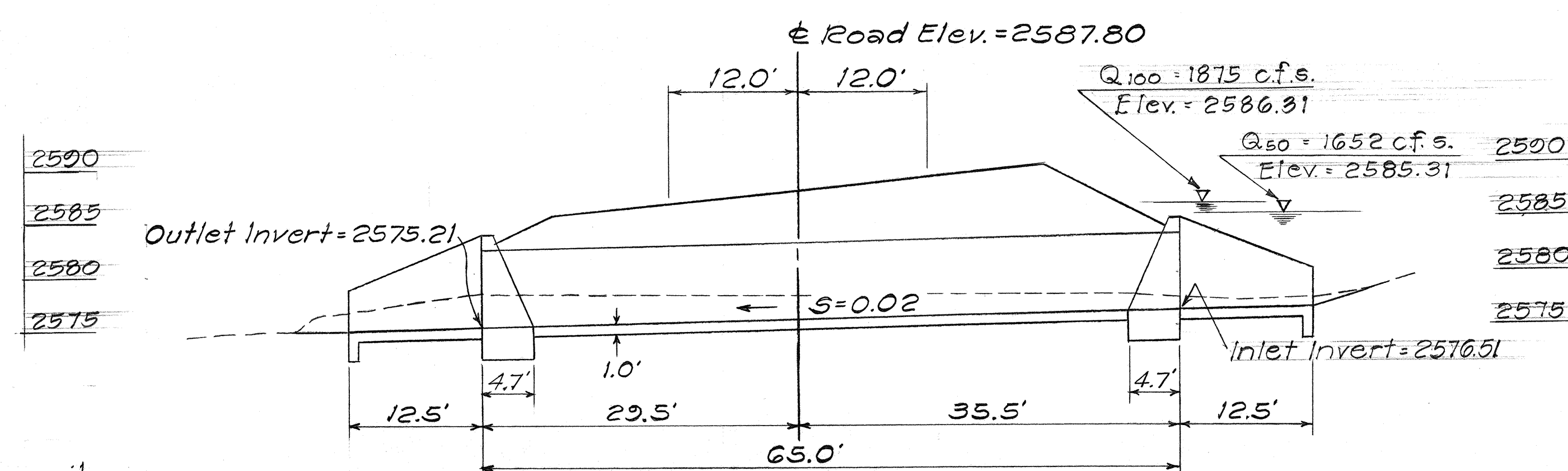
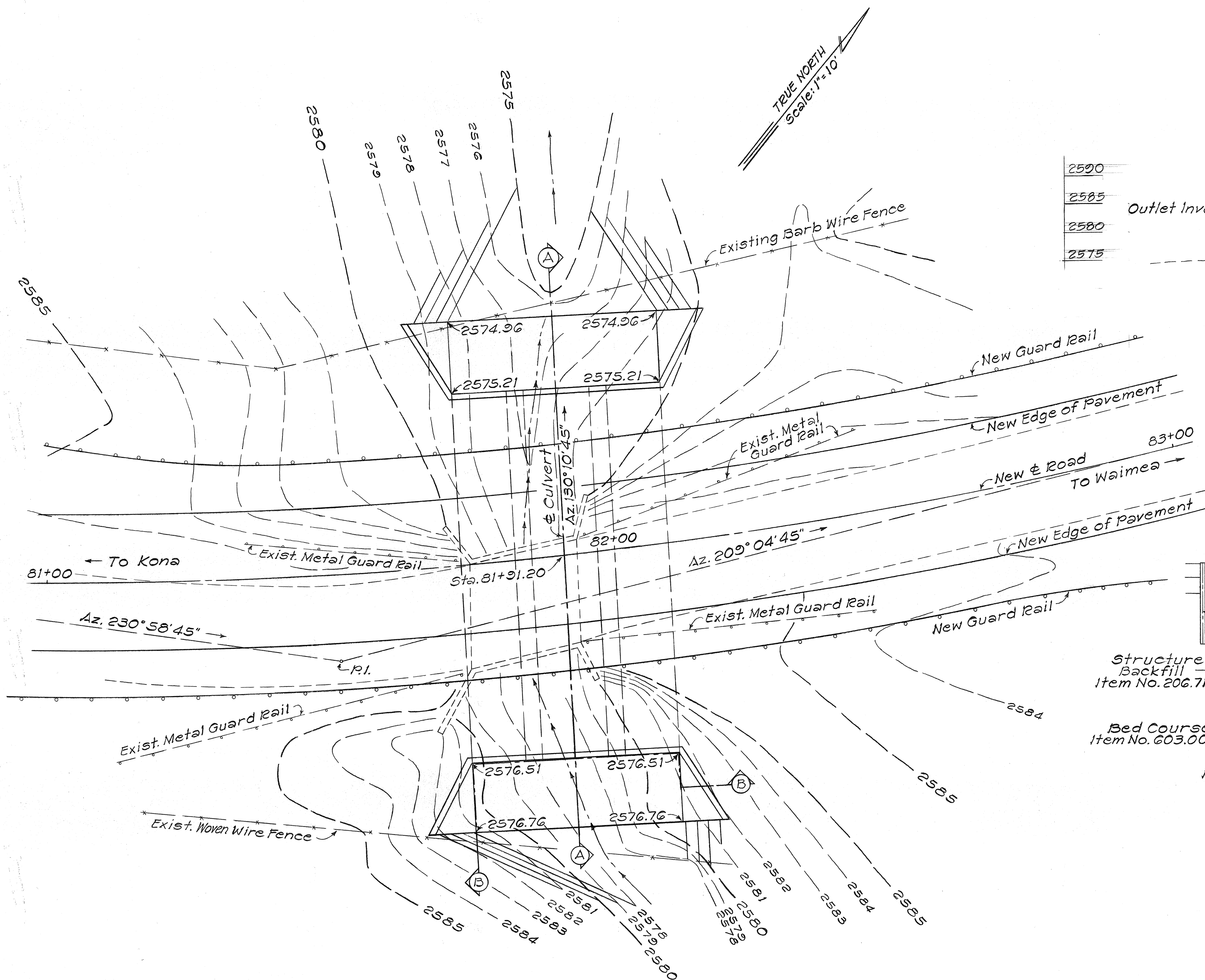


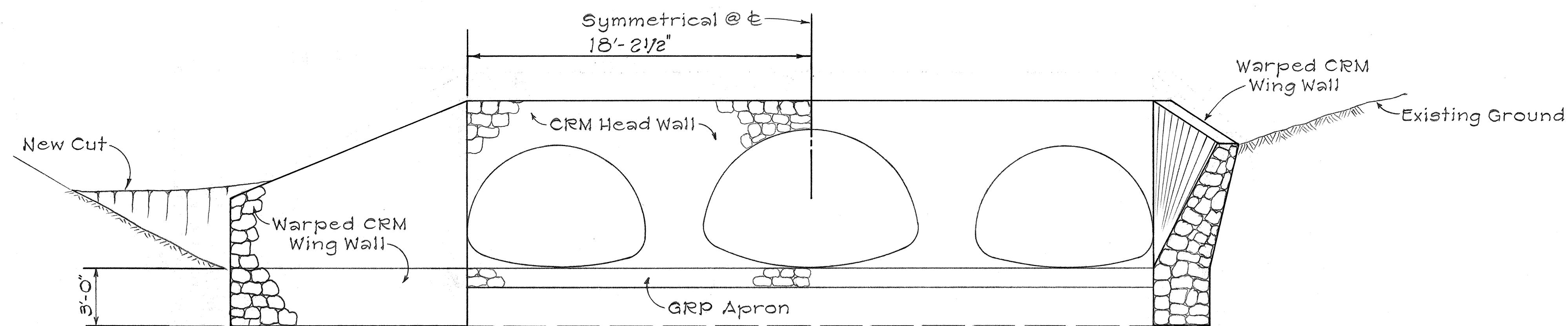
FED. ROAD DIST. NO.	STATE	FED. AID PROJ. NO.	FISCAL YEAR	SHEET NO.	TOTAL SHEETS
HAWAII	HAW.	RS-0190(5)	1979	5	22



DATE	
SURVEY PLOTTED BY	
DRAWN BY	
TRACED BY	
DESIGNED BY	
CHECKED BY	
ORIGINAL PLAN	
NOTE BOOK	
No.	

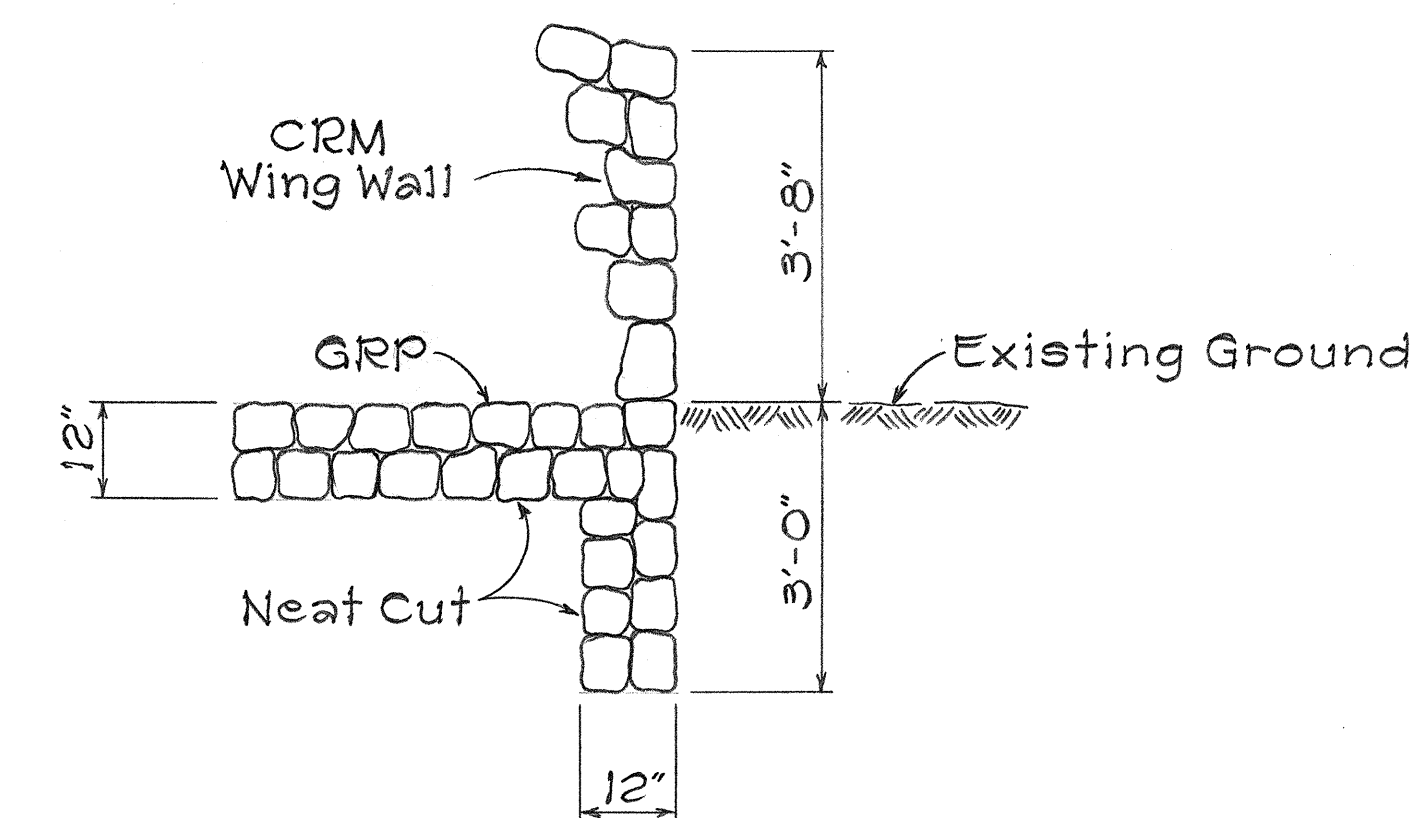
STATE OF HAWAII
 DEPARTMENT OF TRANSPORTATION
 LAND TRANSPORTATION FACILITIES DIVISION
LAYOUT PLAN & SECTIONS
 KAMAKOHA II BRIDGE
 F.A. PROJ. No. RS-0190(5)
 KEAMUKU SECTION
 SOUTH KOHALA, HAWAII
 Scale: As Noted Date: July, 1979
 SHEET No. 1 OF 2 SHEETS

FED. ROAD DIST. NO.	STATE	FED. AID PROJ. NO.	FISCAL YEAR	SHEET NO.	TOTAL SHEETS
HAWAII	HAW.	RS-0190(5)	1979	6	22

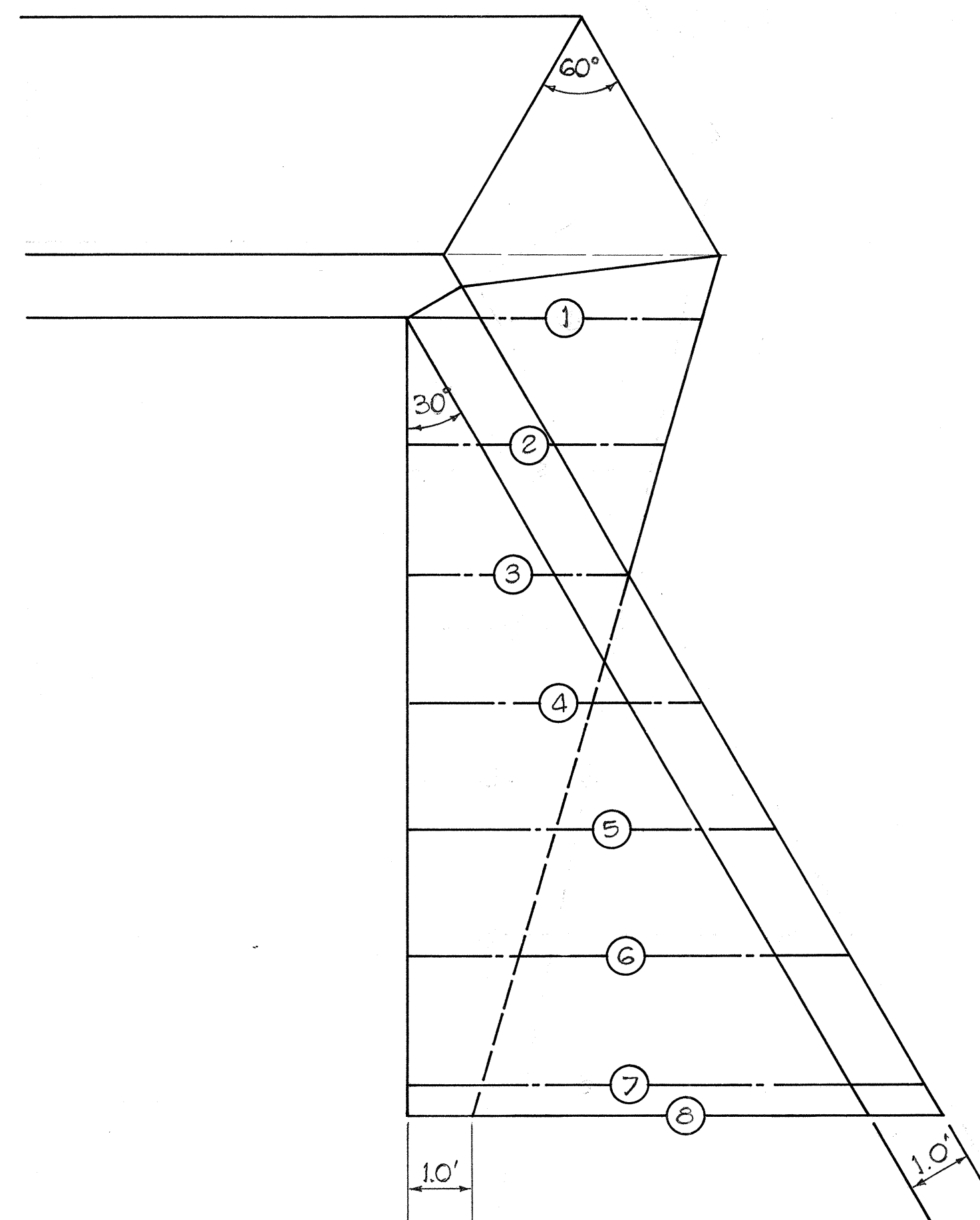


NOTE: For Culvert size, Inverts and Wall Elev.
See Layout Plan and Typical Section "A-A"
Sheet No. 5

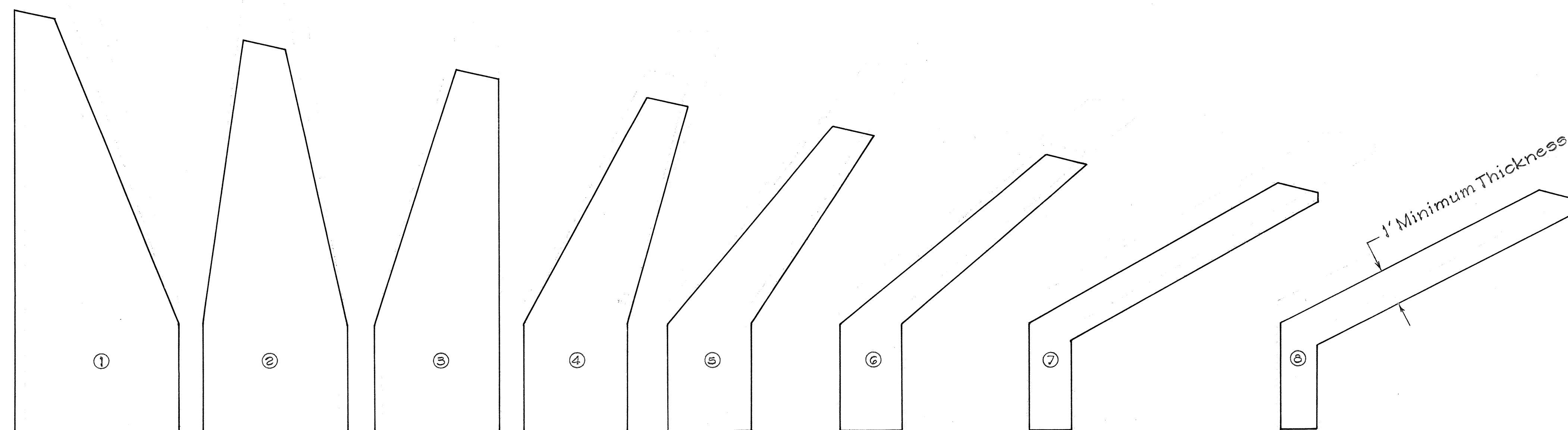
SECTION "B-B"
INLET AND OUTLET STRUCTURE
Scale: 1/4" = 1'-0"



TYPICAL CUT-OFF WALL
Scale: 1/2" = 1'-0"



WING WALL PLAN VIEW
Scale: 1/2" = 1'-0"



NOTE:
Sections at corresponding
numbers O on Plan View.

WING WALL SECTIONS
Scale: 1/2" = 1'-0"

SURVEY PLOTTED BY	DATE
DESIGNED BY	
DESIGNED BY	
QUANTITIES BY	
CHECKED BY	
NO.	

STATE OF HAWAII
DEPARTMENT OF TRANSPORTATION
HIGHWAYS DIVISION
HEAD WALL
& WING WALL SECTIONS
KAMAKOHA II BRIDGE
F.A. PROJ. NO. RS-0190(5)
KEAMUKU SECTION
SOUTH KOHALA, HAWAII
Scale: As Noted Date: July, 1979
SHEET No. 2 OF 2 SHEETS