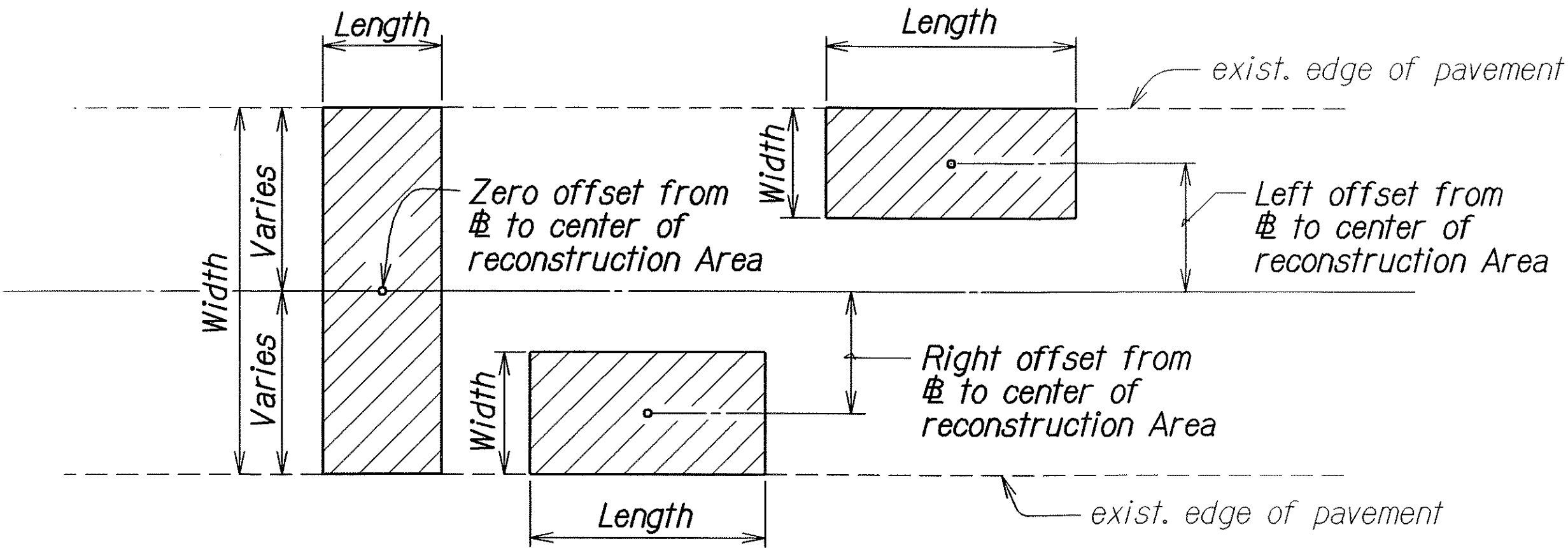


FED. ROAD DIST. NO.	STATE	PROJ. NO.	FISCAL YEAR	SHEET NO.	TOTAL SHEETS
HAWAII	HAW.	139A-01-05M	2007	18	106

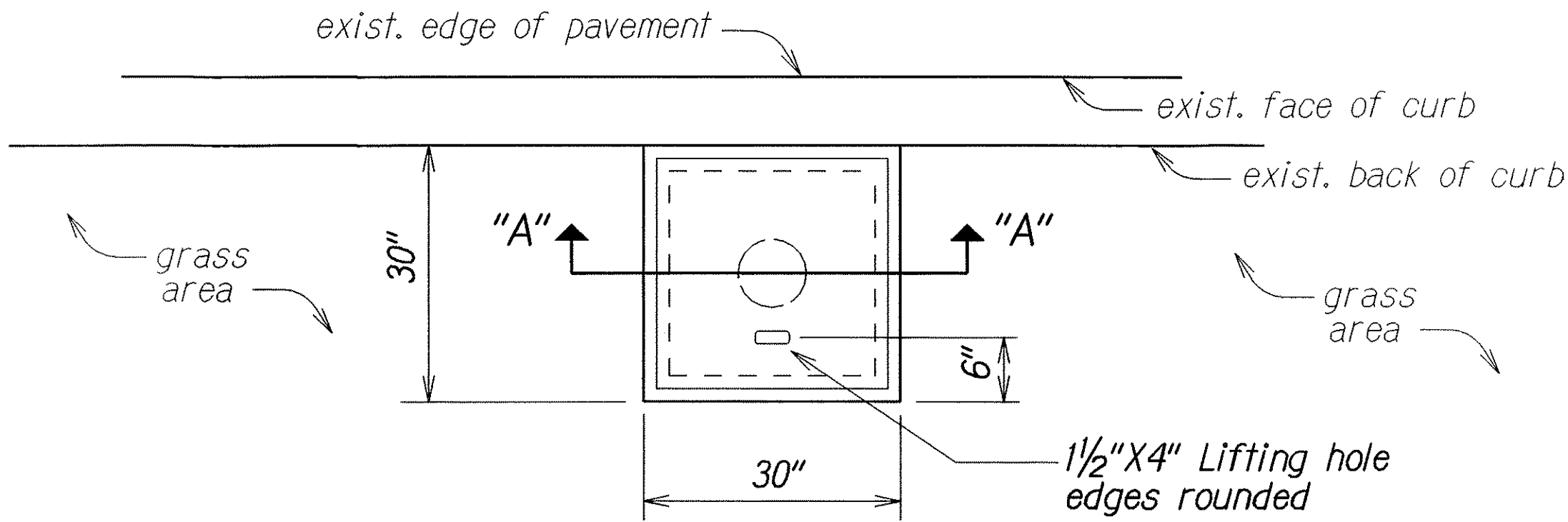
RECONSTRUCTION AREA SCHEDULE						
PROJECT No.	STATION		OFFSET FROM RD. # TO CENTER RECON. AREA (L.F.)		LENGTH (L.F.)	WIDTH (L.F.)
	FROM	TO	RIGHT	LEFT		
S-0130(2)	2+35	4+80	6		245	12
	2+40	4+22		7.5	182	15
	4+22	5+70		10.5	148	21
	10+75	12+80	5		205	10
	10+75	12+80		3.5	205	7

Note: Final Reconstruction Areas to be determined by the Engineer

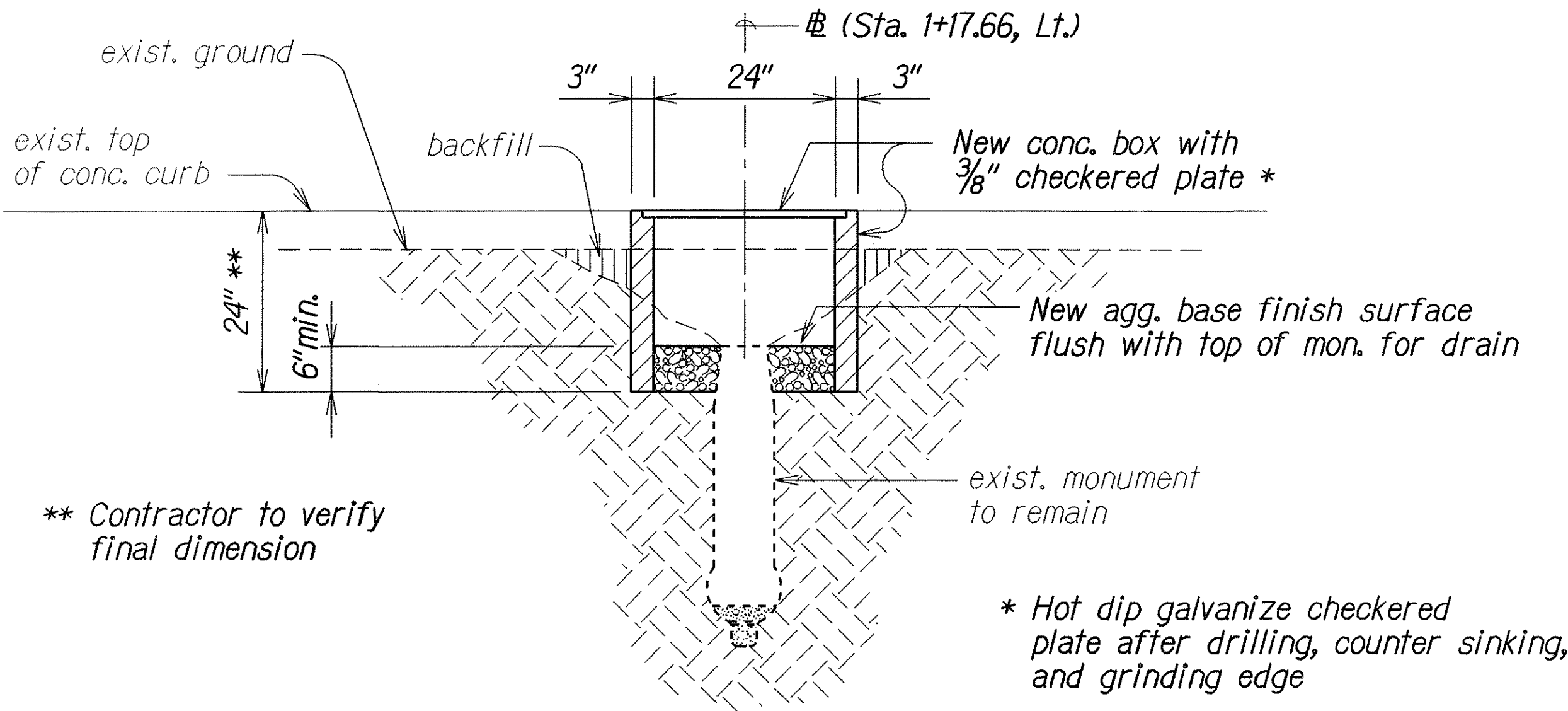


TYPICAL PLAN  
Not To Scale

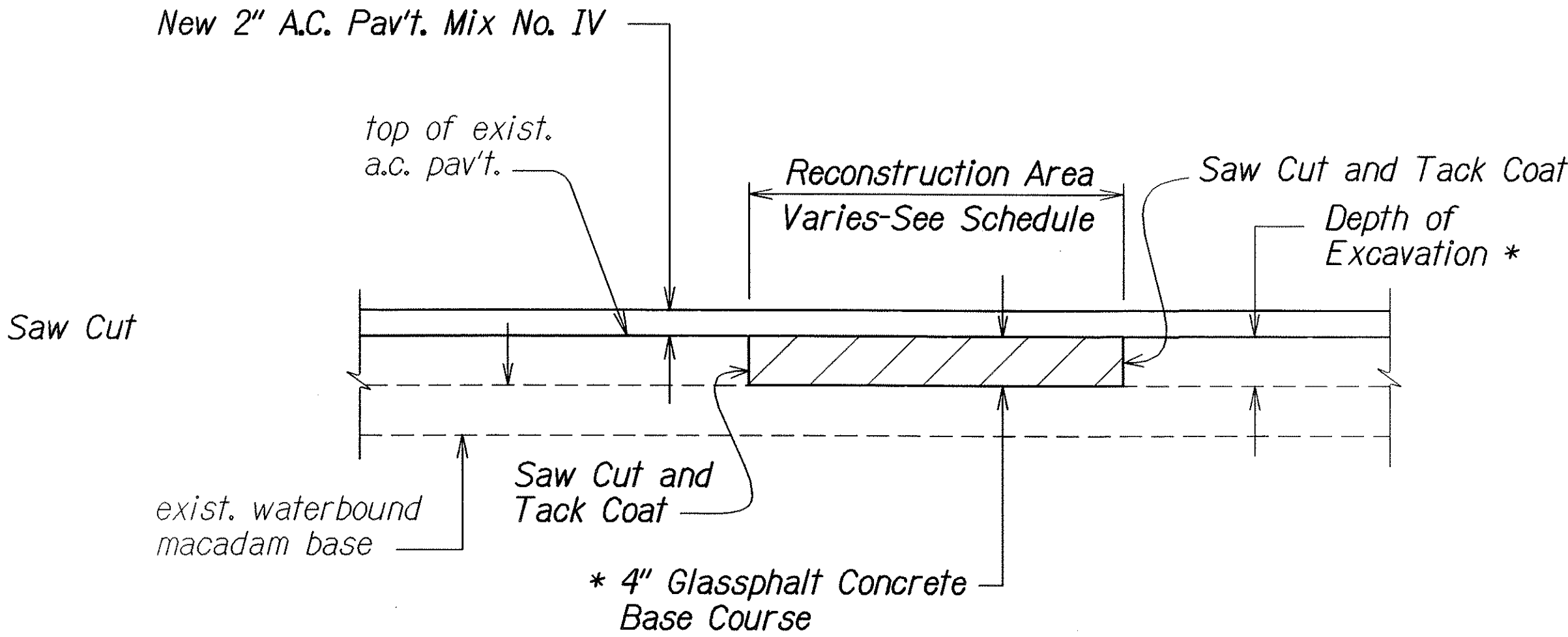
NOTE:  
1. For reconstruction area schedule see this sheet.



MONUMENT BOX PLAN VIEW  
Not To Scale



TYPICAL SECTION "A-A"  
Not To Scale



A.C. PAVEMENT RECONSTRUCTION DETAIL  
Not To Scale

STATE OF HAWAII

DEPARTMENT OF TRANSPORTATION

HIGHWAYS DIVISION

RECONSTRUCTION AREA

SCHEDULE AND DETAILS

OLD KEA'AU-PAHOA ROAD RESURFACING

KEA'AU TO KEAAU HIGH SCHOOL

PROJECT NO 139A-01-05M

Scale: As Shown

Date: Nov., 2004

SHEET No. 1 OF 1 SHEETS

DESIGNED BY	DATE
DRAWN BY	
CHECKED BY	
NOTED BY	
QUANTITIES BY	
REVISIONS	
ORIGINAL PLAN	