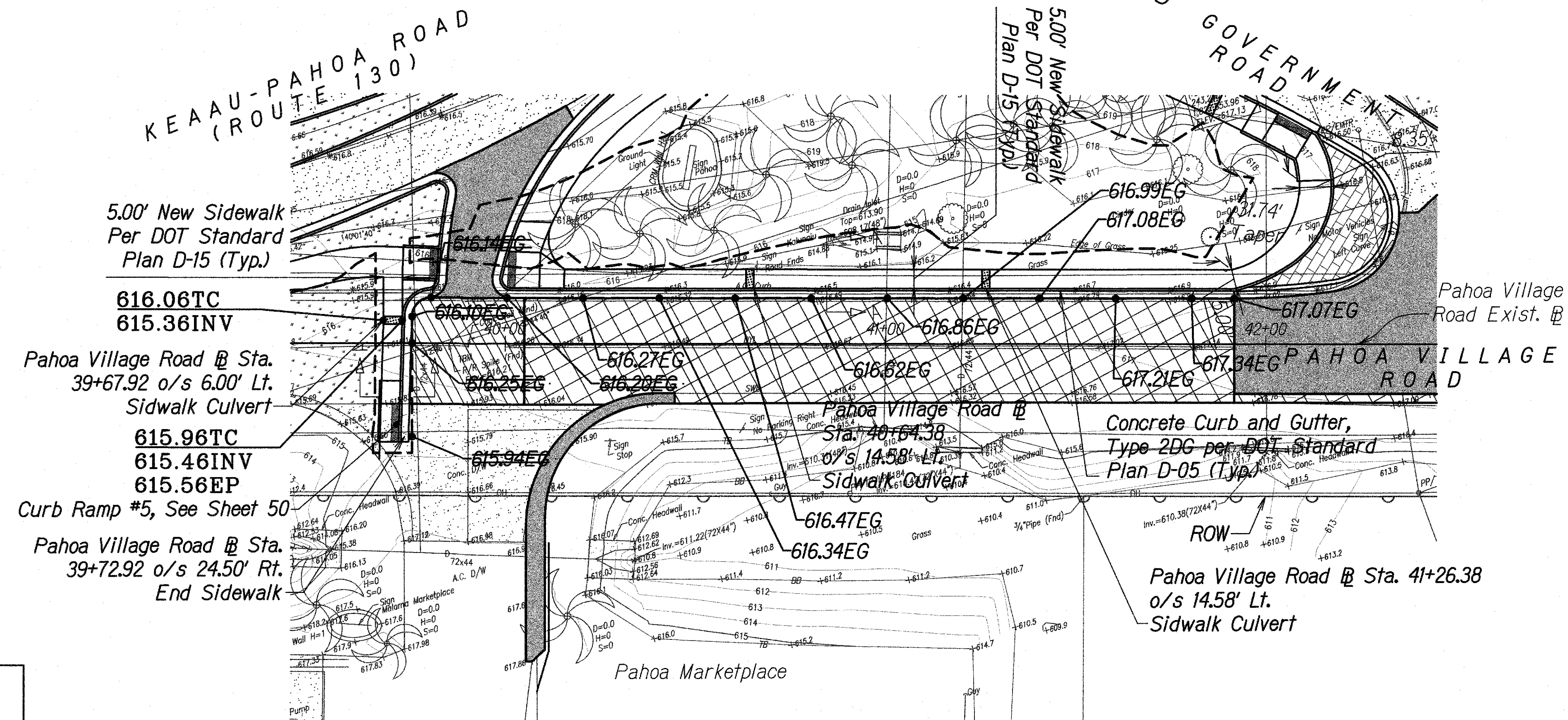
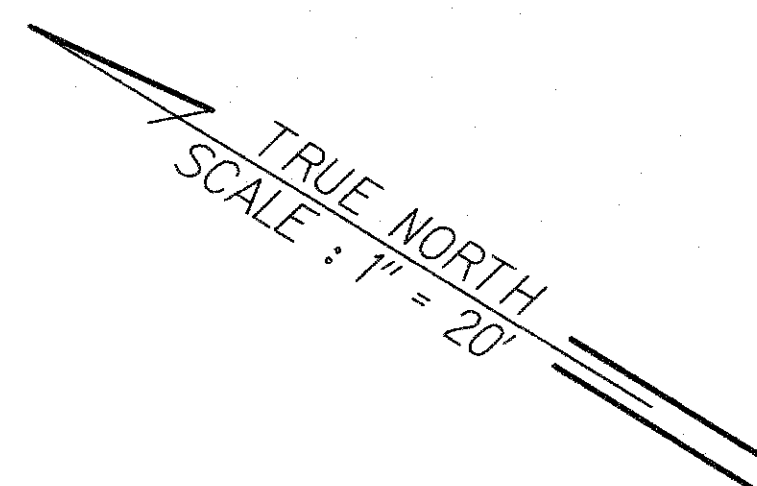


| FED. ROAD DIST. NO. | STATE | FED. AID PROJ. NO. | FISCAL YEAR | SHEET NO. | TOTAL SHEETS |
|---------------------|-------|--------------------|-------------|-----------|--------------|
| HAWAII | HAW. | HSIP-0130(031) | 2014 | 48 | 108 |

* See Roadway Plan & Profile, Sheet 38-40
For Continuation



LEGEND FOR AS-BUILT POSTINGS

- Squiggly line for as-built deletion
- Double line for as-built deletion
- Roadway Text for as-built posting

LEGEND

- 9.5" Portland Cement Concrete, 6" Untreated Permeable Base, 6" Aggregate Subbase
- 4" Asphaltic Concrete, 7" Asphalt Concrete Base, 6" Aggregate Subbase
- Sidewalk Culvert, See Sheet 77 for Details
- Truck Apron, See Sheet 25 for Details

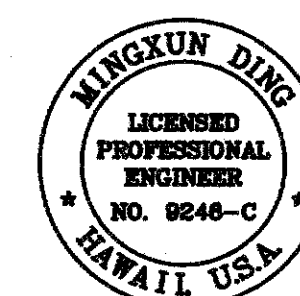
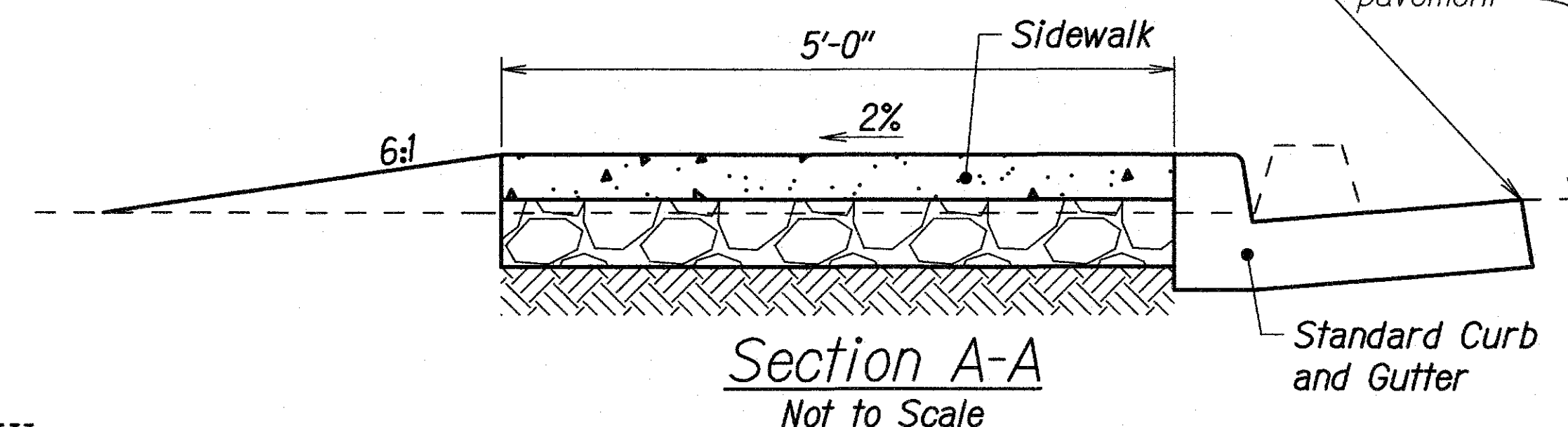
- Light Pole, See Electrical Plans
- Guardrail, See Sheet 74 for Details
- 4'-High Chain Link Fence per HDOT Standard Plan D-02
- Right of Way
- Limits of Grading

- Cold Plane and Repave 2" HMA Pav't, Mix No. IV
- Cold Plane and Repave 4" HMA Pav't, Mix No. IV

- Landscaping, See Landscape Plans

SIDEWALK EXTENSION PLAN

Scale: 1" = 20'



LICENSE EXPIRES 4/30/18
THIS WORK WAS PREPARED BY
ME OR UNDER MY SUPERVISION

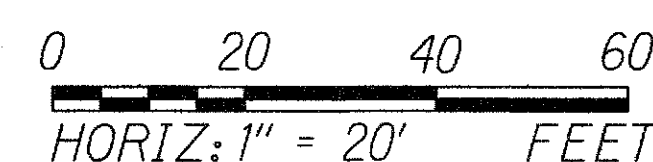
STATE OF HAWAII
DEPARTMENT OF TRANSPORTATION
HIGHWAYS DIVISION

SIDEWALK EXTENSION PLAN

*Keaau-Pahoa Road Intersection
Improvements at Old Government Road
Federal-Aid Project No. HSIP-0130(031)*

Scale: As Shown Date: August 2013

SHEET No. 1 OF 1 SHEETS



"AS-BUILT"