

FED. ROAD DIST. NO.	STATE	PROJ. NO.	FISCAL YEAR	SHEET NO.	TOTAL SHEETS
HAWAII	HAW.	130B-01-07	2007	16	29

LEGEND

	4 each Type A Raised Pavement Markers Type C
	4 each Type J Raised Pavement Markers Type D
	8" White Stripe with Type C Raised Pavement Markers @ 20'-0" o.c. (Thermoplastic Extrusion)
	4" Double Solid Yellow Centerline Stripe with Type D Raised Pavement Markers @ 20'-0" o.c. (Thermoplastic Extrusion)
	4" Double Solid Yellow Transverse Median Stripes with Type H Raised Pavement Markers @ 20'-0" o.c. (Thermoplastic Extrusion)
	4" Yellow Edge Stripe with Type H Raised Pavement Markers @ 40'-0" o.c. (Thermoplastic Extrusion)
	4" Double Solid White Stripes with Type C Raised Pavement Markers @ 20'-0" o.c. (Thermoplastic Extrusion)
	Lane Change Restriction Marking: 4 each Type A Raised Pavement Markers Type C Raised Pavement Markers @ 20'-0" o.c. 4" White Stripe (Thermoplastic Extrusion)
	4" or 8" White Edge Stripe with Type C Raised Pavement Markers @ 40'-0" o.c. (Thermoplastic Extrusion)
	4" White Guide Lines (Thermoplastic Extrusion)
	8" White Channelizing Stripe
	Transverse Median Diagonal Marking 12" Wide @ 20'-0" o.c. (Thermoplastic Extrusion)
	4" Double Solid Yellow Longitudinal Median Stripes with Type H Raised Pavement Markers @ 20'-0" o.c. (Thermoplastic Extrusion)
	Transverse Shoulder Marking (Thermoplastic Extrusion)
	Channelizing Island or Deceleration Lane Gore (Thermoplastic Extrusion)
	② Crosswalk and Stop Line. All Stop Lines shall be 10'-0" from Crosswalk unless otherwise noted. The circled number indicates the number of lanes for payment (Thermoplastic Extrusion)
	Pavement Arrow (Thermoplastic Extrusion)
	STOP Pavement Word (Thermoplastic Extrusion)
	4 Each Type J Raised Pavement Markers Type D Raised Pavement Markers @ 40'-0" o.c. Type H Raised Pavement Markers (Reflective Surface facing no-passing direction) 4" Single Solid Yellow Stripe (Thermoplastic Extrusion)
	Extension of Edge Line, 4" Wide x 2'-0" Long White Stripe @ 10'-0" o.c. w/Type C Markers @ 40'-0" o.c. (Thermoplastic Extrusion)

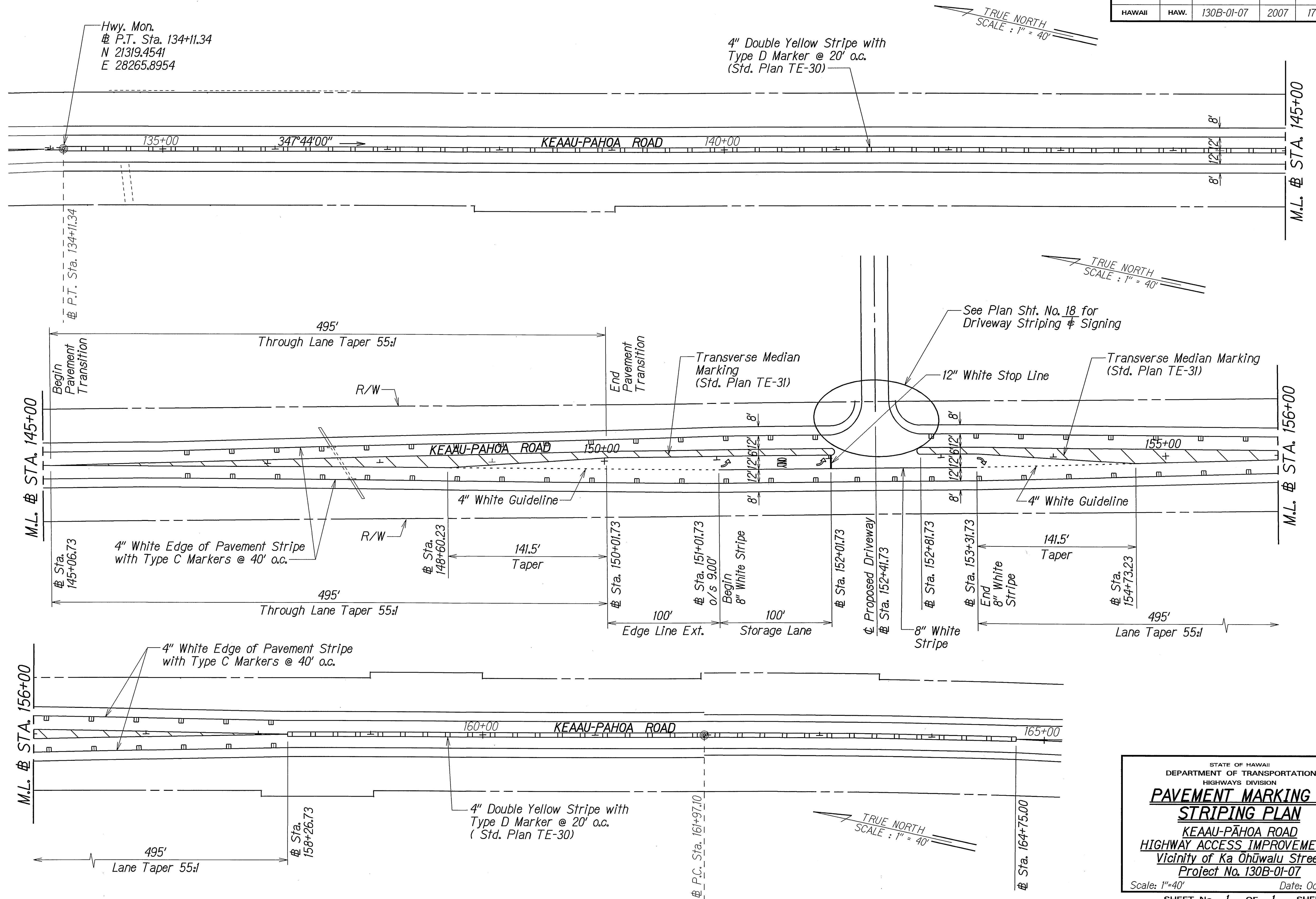
NOTES

1. Layout of pavement markings and striping shall be done by the Contractor and approved by the Engineer prior to any installation work.
2. Existing pavement markings not incorporated in the final traffic pattern shall be removed as directed by the Engineer. Costs shall be incidental to the various pavement marking items.
3. Final locations of all signs shall be approved by the Engineer prior to any installation work.
4. Existing signs not shown on these plans shall remain as posted unless otherwise directed by the Engineer.
5. Final locations of all Stop Lines shall be approved by the Engineer prior to installation.
6. All pavement striping shall be thermoplastic extrusion unless otherwise noted.

ORIGINAL PLAN	SURVEY PLOTTED BY	DATE
NOTE BOOK	DRAWN BY	
TELEPHONE	DESIGNED BY	
EXPLAINED	QUANTITIES BY	
	CHECKED BY	

STATE OF HAWAII
DEPARTMENT OF TRANSPORTATION
HIGHWAYS DIVISION
PAVEMENT MARKING
LEGEND, DETAILS & NOTES
KEA'AU-PĀHOA ROAD
HIGHWAY ACCESS IMPROVEMENTS
Vicinity of Ka Ohūwalu Street
Project No. 130B-01-07
Scale: As Noted Date: Oct. 2006
SHEET No. 1 OF 1 SHEETS

FED. ROAD DIST. NO.	STATE	PROJ. NO.	FISCAL YEAR	SHEET NO.	TOTAL SHEETS
HAWAII	HAW.	130B-01-07	2007	17	29



ORIGINAL PLAN	DATE
DESIGNED BY	10/27/06
DESIGNED BY	
QUANTITIES BY	
CHECKED BY	

STATE OF HAWAII
DEPARTMENT OF TRANSPORTATION
HIGHWAYS DIVISION

PAVEMENT MARKING & STRIPING PLAN

KEEAU-PAHOA ROAD
HIGHWAY ACCESS IMPROVEMENTS
Vicinity of Ka Ohuwalu Street
Project No. 130B-01-07

Scale: 1"=40' Date: Oct. 2006

SHEET No. 1 OF 1 SHEETS