

FED. ROAD DIST. NO.	STATE	FED. AID PROJ. NO.	FISCAL YEAR	SHEET NO.	TOTAL SHEETS
HAWAII	HAW.	RS-0130(24)	2000	27	55

LEGEND

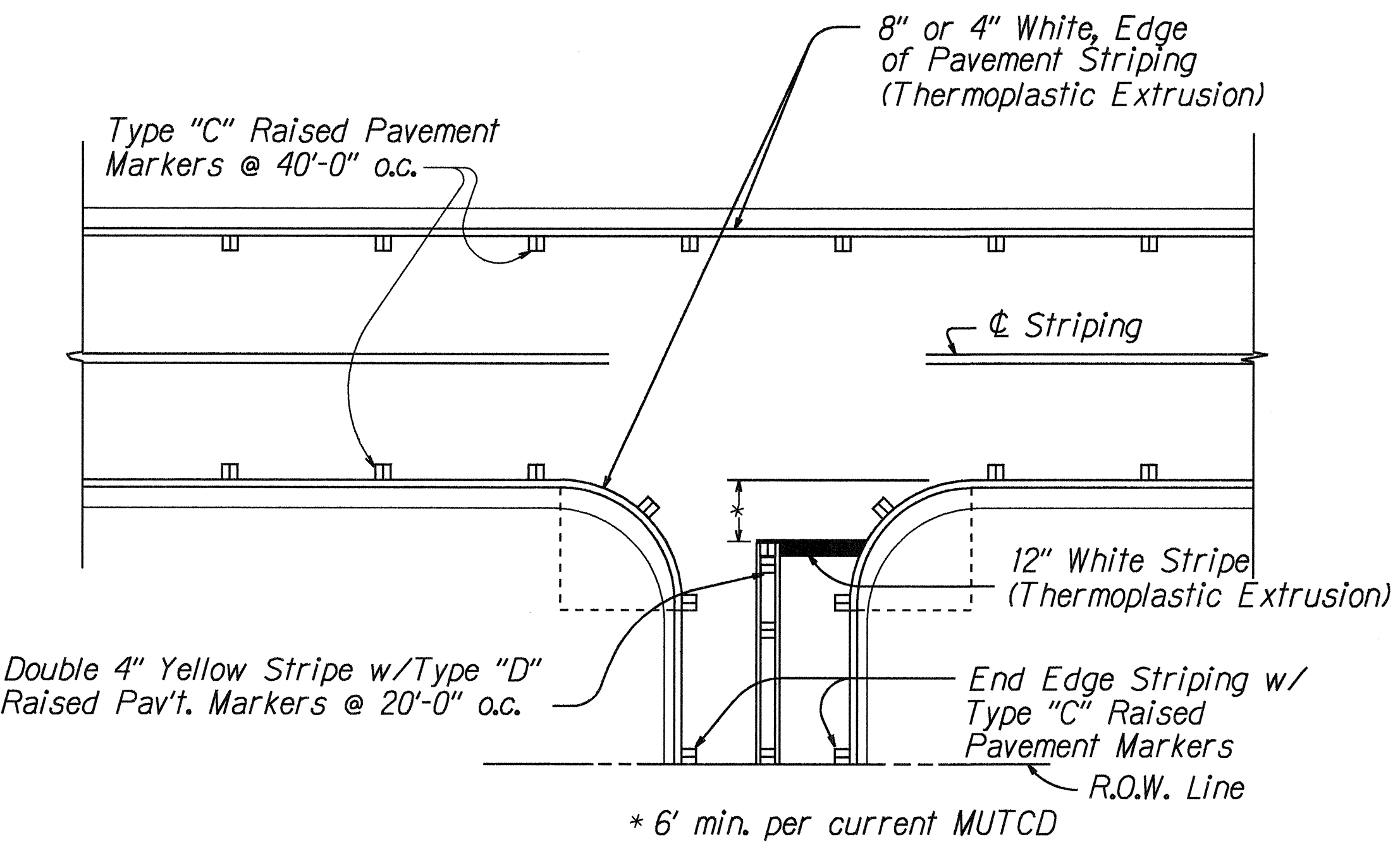
	4 each Type A Raised Pavement Markers Type C Raised Pavement Markers @ 40'- 0" o.c.
	4 each Type J Raised Pavement Markers Type D Raised Pavement Markers @ 40'- 0" o.c.
	4 Each Type J Raised Pavement Markers Type D Raised Pavement Markers @ 40'-0" o.c. Type H Raised Pavement Markers (Reflective Surface facing no-passing direction) 4" Single Solid Yellow Stripe (Thermoplastic Extrusion)
	4" Double Solid Yellow Centerline Stripes with Type D Raised Pavement Markers @ 20'- 0" o.c. (Thermoplastic Extrusion)
	4" Double Solid Yellow Transverse Median Stripes with Type H Raised Pavement Markers @ 20'- 0" o.c. (Thermoplastic Extrusion)
	4" Double Yellow Guide Lines for Transverse Median @ Private Driveways with Type H Raised Pavement Markers @ 20'-0" o.c. (Thermoplastic Extrusion)
	4" or 8" White Edge Stripe with Type C Raised Pavement Markers @ 40'-0" o.c. (Thermoplastic Extrusion)
	8" White Channelizing Stripe with Type C Raised Pavement Markers @ 20'-0" o.c. (Thermoplastic Extrusion)
	Transverse Median Diagonal Marking 12" Wide @ 20'-0" o.c. (Thermoplastic Extrusion)
	4" Double Solid Yellow Longitudinal Median Stripes with Type H Raised Pavement Markers @ 20'- 0" o.c. (Thermoplastic Extrusion)
	Channelizing Island or Deceleration Lane Gore (Thermoplastic Extrusion)
	4 Each Type A Raised Pavement Markers 10' wide (See Std. Plan TE-31) Type C Raised Pavement Markers @ 20'-0" o.c. 4" Single Solid White Stripe (Thermoplastic Extrusion)
	4" Guide Lines, 2' Stripe with 4'-0" space (Thermoplastic Extrusion)
	4" Edge Line Extension, 2' Stripe at 10'-0" o.c. (Thermoplastic Extrusion) with Type C Markers at 40'-0" o.c.
	Pavement Arrow (Thermoplastic Extrusion)
	Pavement Word (Thermoplastic Extrusion)
	Crosswalk (Thermoplastic Extrusion)
	Rumble Strip - 32 Each Type A Raised Pavement Markers per Strip.

REFLECTOR MARKER LEGEND

	RM-2, White Reflector Marker with flex post unless otherwise noted.
	RM-3, Yellow Reflector Marker with flex post unless otherwise noted.
	RM-4 with flex post unless otherwise noted.
	Bi-Directional RM-3 Yellow Reflector Marker & RM-2 White Reflector Marker with flex post unless otherwise noted.
	Bi-Directional RM-3, Yellow Reflector Marker with flex post unless otherwise noted.

NOTES

- Layout of pavement markings and striping shall be done by the Contractor and approved by the Engineer prior to any installation work.
- Existing pavement markings not incorporated in the final traffic pattern shall be removed as directed by the Engineer. Payment will be made by 645.3000-Detour Maintenance.
- Raised pavement markers shall not be installed within crosswalks.
- Final locations of all Stop Lines shall be approved by the Engineer prior to installation.
- All pavement striping and markings shall be as noted on the Legend or plans, or as directed by the Engineer and shall conform to State standards.



TYPICAL EDGE OF PAVEMENT MARKING
Not to Scale

STATE OF HAWAII
DEPARTMENT OF TRANSPORTATION
HIGHWAYS DIVISION
**PAVEMENT MARKING
LEGEND AND NOTES**
KEA'AU-PĀHOA ROAD
PARADISE PARK SECTION-PHASE II & III
F.A. PROJECT NO. RS-0130(24)
Scale: As Shown Date: May, 2000
SHEET No. 1 OF 1 SHEETS

ORIGINAL PLAN	SURVEY PLOTTED BY	DATE
NOTES BOOK	DRAWN BY	
4/10/2001	DESIGNED BY	
	CHECKED BY	