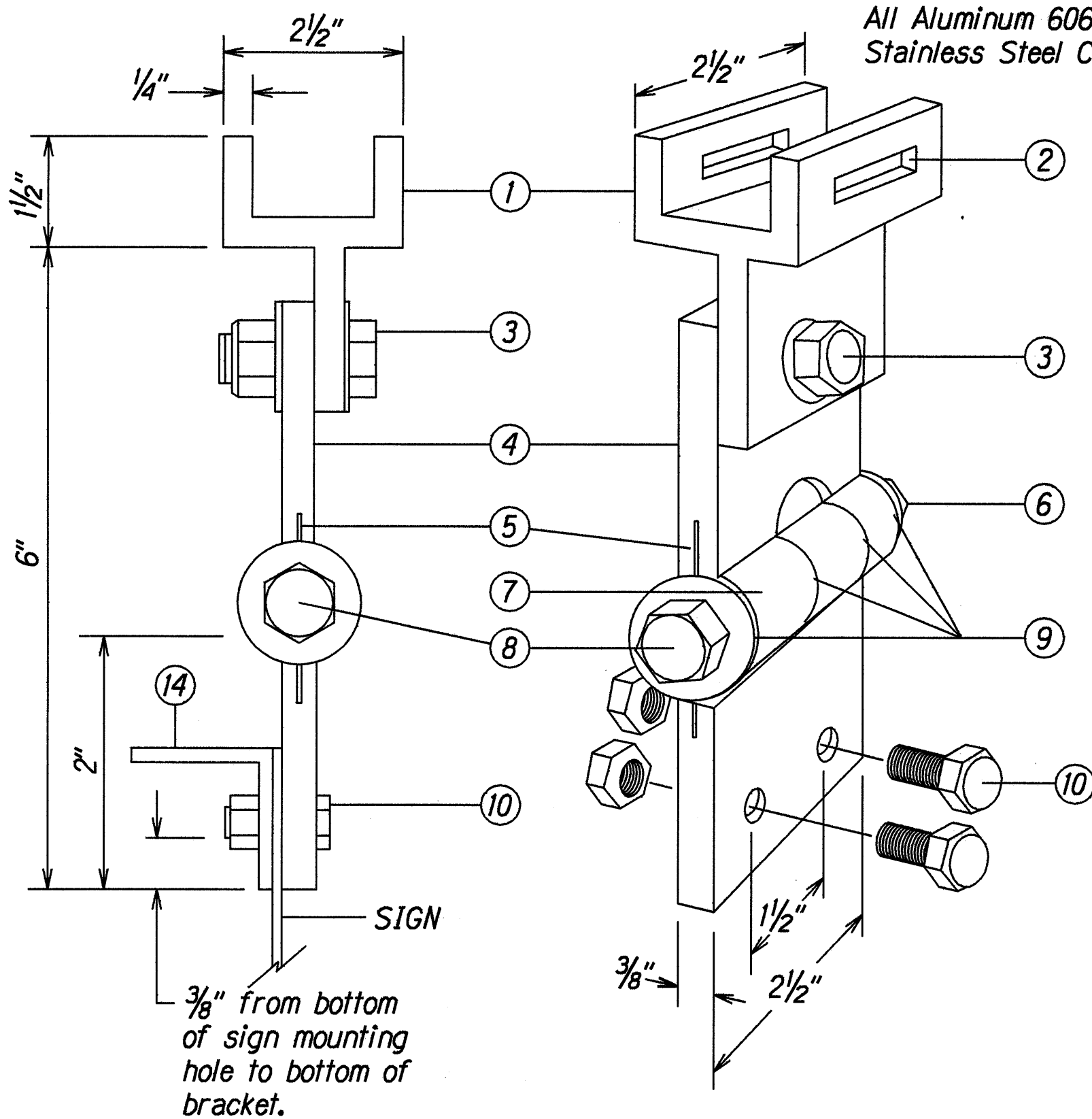


FED. ROAD DIST. NO.	STATE	PROJ. NO.	FISCAL YEAR	SHEET NO.	TOTAL SHEETS
HAWAII	HAW.	130A-01-99	2000	9	18

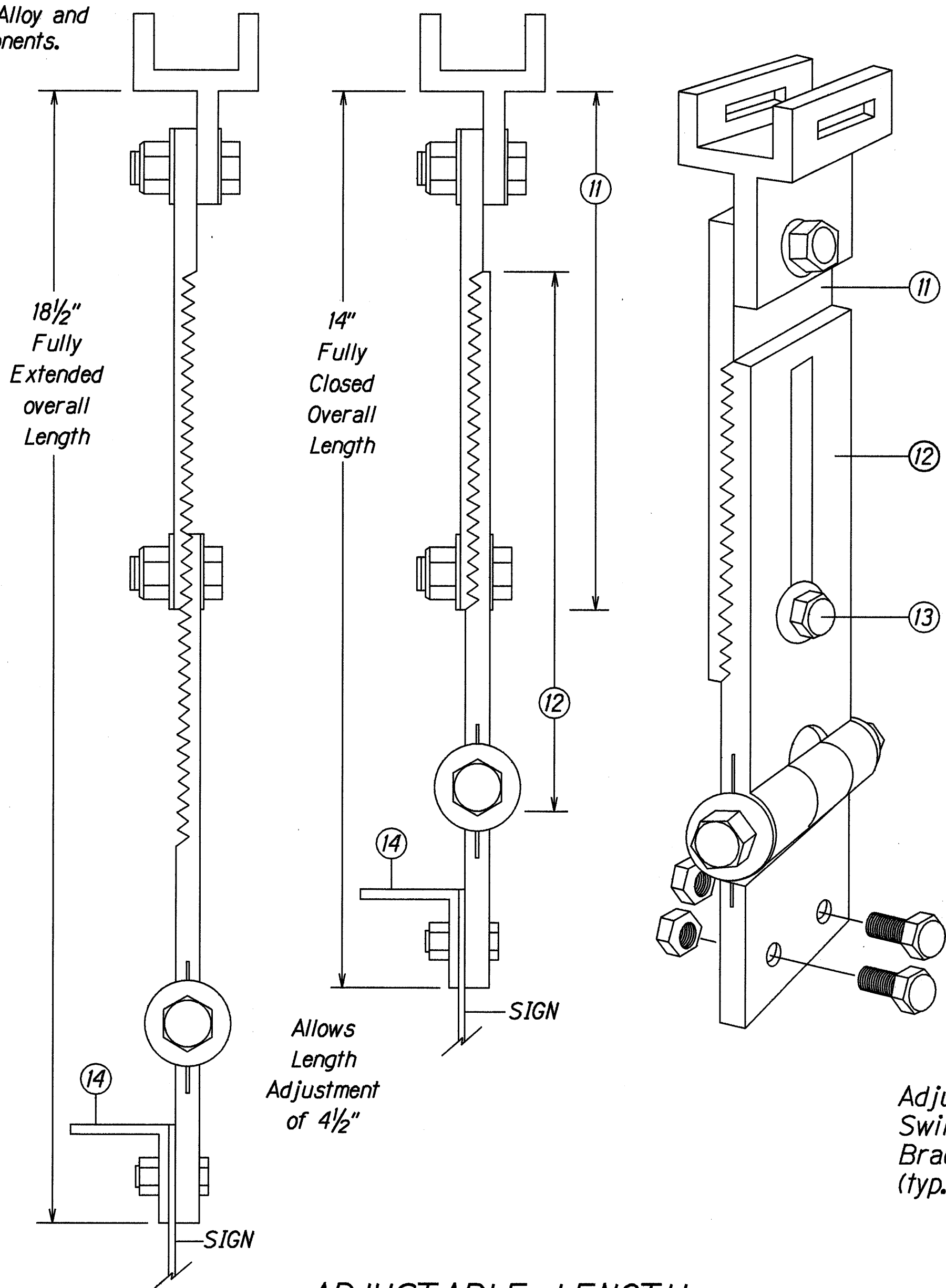
STREET NAME (D3) SIGN NOTES:

1. Sign D3-1 shall be a new Street Name Sign. The Contractor shall provide the same message on the front and back side of the sign. Payment will not be made separately but shall be considered as one unit.
2. Colors:
Legend - White (Reflectorized)
Background - Green (Reflectorized)
3. All panels shall be reflectorized with Type III or IV retroreflective sheeting in accordance with Section - 712.20 of the Standard Specifications.
4. All signs shall conform to section 621 of the Standard Specifications and the latest editions and amendments of the following FHWA publications:
a. "Manual on Uniform Traffic Control Devices for Streets and Highways" (MUTCD)
b. "Standard Highway Signs"
c. "Standard Alphabets for Highway Signs"
5. Borders and messages shall conform to details as shown on the plans and as specified in the MUTCD.
6. Sign mounting brackets, aluminum angle, fixtures, fasteners and all necessary hardware, and equipment, tools, labor, materials and other incidentals for installation, will not be paid for separately but shall be considered incidental to street name sign installation.
7. Number of Swing Sign Brackets required per Sign Panel:
3 Brackets - Panel length 7' or less
4 Brackets - Panel length greater than 7' with a maximum length of 9'-6"
8. Diacritical marks for Street Name are not authorized.

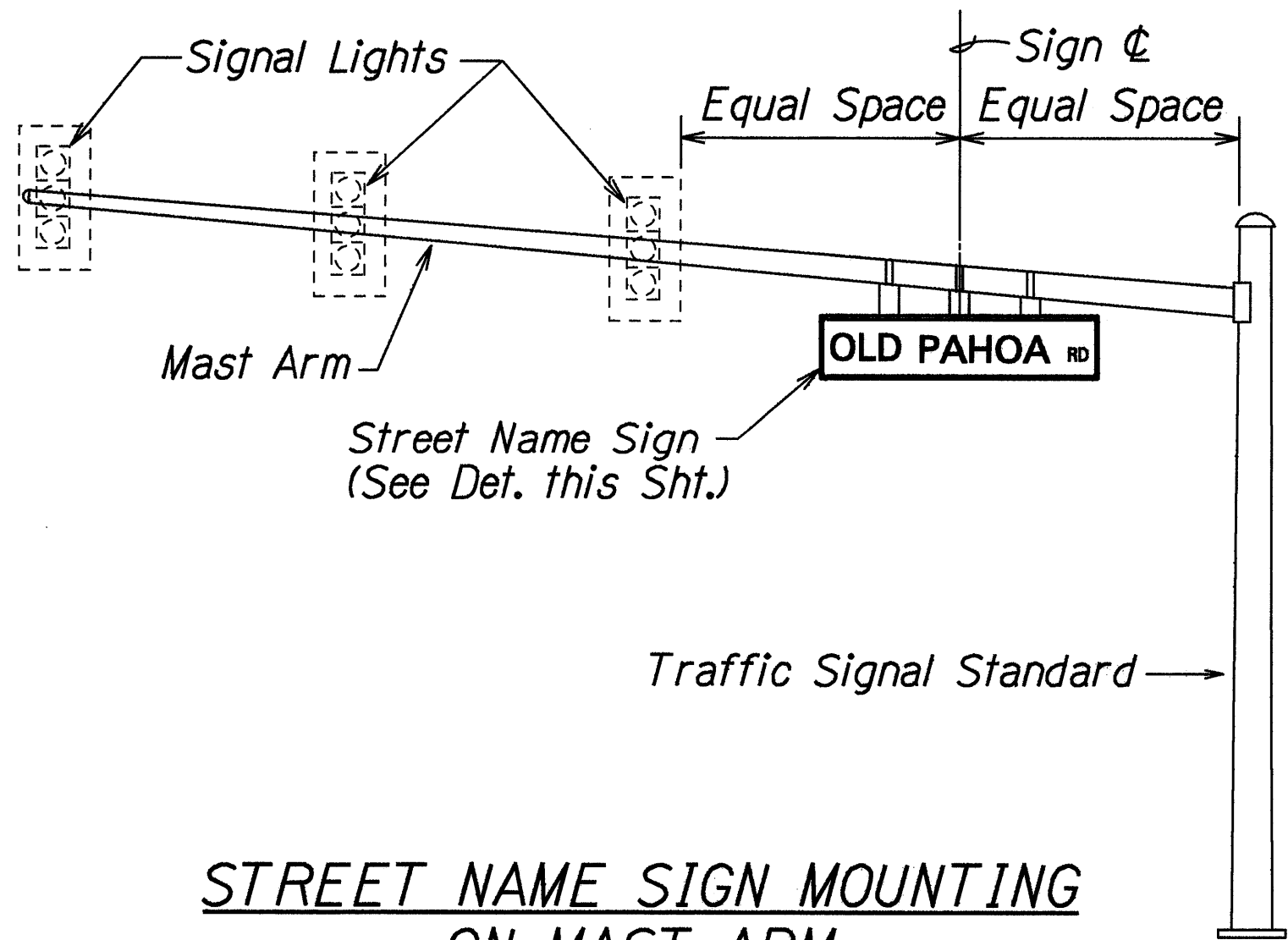


FIXED LENGTH NON-ADJUSTABLE
SWING SIGN BRACKET

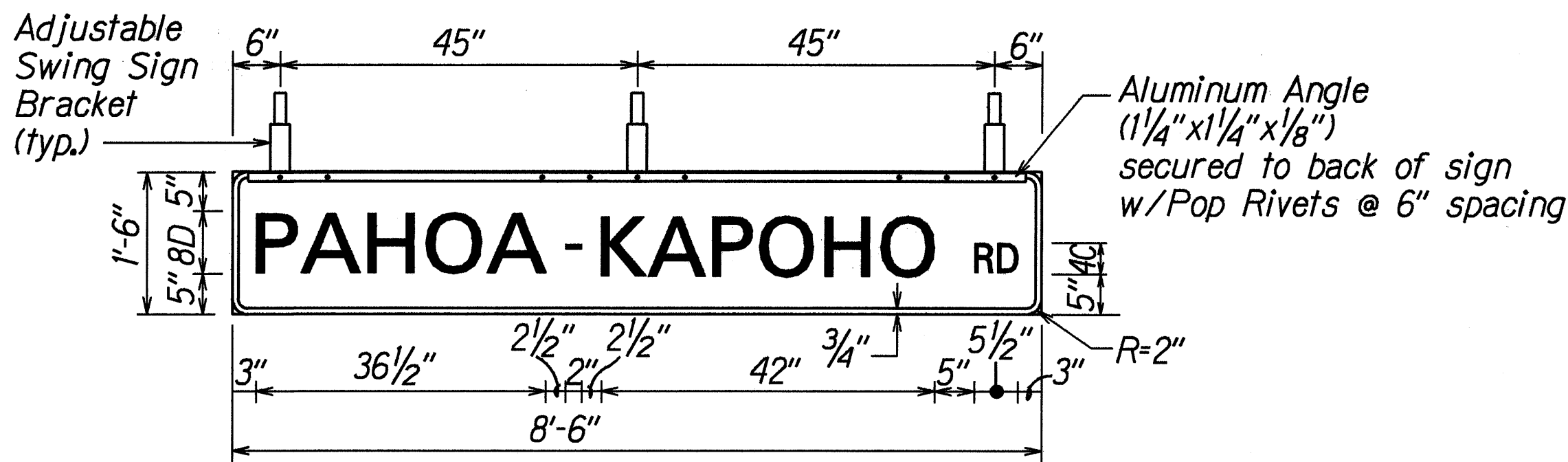
- 1 Pivotal Upper Bracket
- 2 1 5/8" x 1/4" Slot for double strapping to electrolier mast arm. (M2G-34S(HD) .030" x 3/4" Heavy Duty Stainless Steel Strap with M2G-34B(HD) Buckle recommended.)
- 3 1/2" - 13 x 1 1/2" Stainless Steel Hex Head Bolt with Stainless Steel Hex Lock Nut and 1/16" Stainless Steel Washer (both sides). Allows upper bracket to pivot and align with electrolier mast arm.
- 4 6" Overall drop with Fixed Length Sign Bracket
- 5 Stainless Steel Dampener Spring (Removable)
- 6 Stainless Steel Hex Lock Nut with 1/16" Stainless Steel Washer
- 7 1" O.D. Axle Housing
- 8 1/2" - 13 x 4" Stainless Steel Hex Head Bolt with 1/16" Stainless Steel Washer
- 9 Oilite Bushing
- 10 Sign Mounting Sets, consisting of two each 5/16" - 18 x 1" Stainless Steel Hex Head Bolt with Stainless Steel Hex Lock Nut. Two holes on 1 1/2" centers provide positive lock sign mounting to bracket.
- 11 8 1/4" overall length Upper Adjustable Sign Bracket section
- 12 9" overall length Lower Adjustable Sign Bracket section, including Axle Housing (8" overall length to top of Axle Housing)
- 13 1/2" - 13 x 1 1/2" Stainless Steel Hex Bolt with Stainless Steel Hex Lock Nut and 1/16" Stainless Steel Washers (both sides). Loosen lock nut, adjust bracket teeth to level sign.
- 14 1 1/4" x 1 1/4" x 1/8" Aluminum Angle



ADJUSTABLE LENGTH
SWING SIGN BRACKET

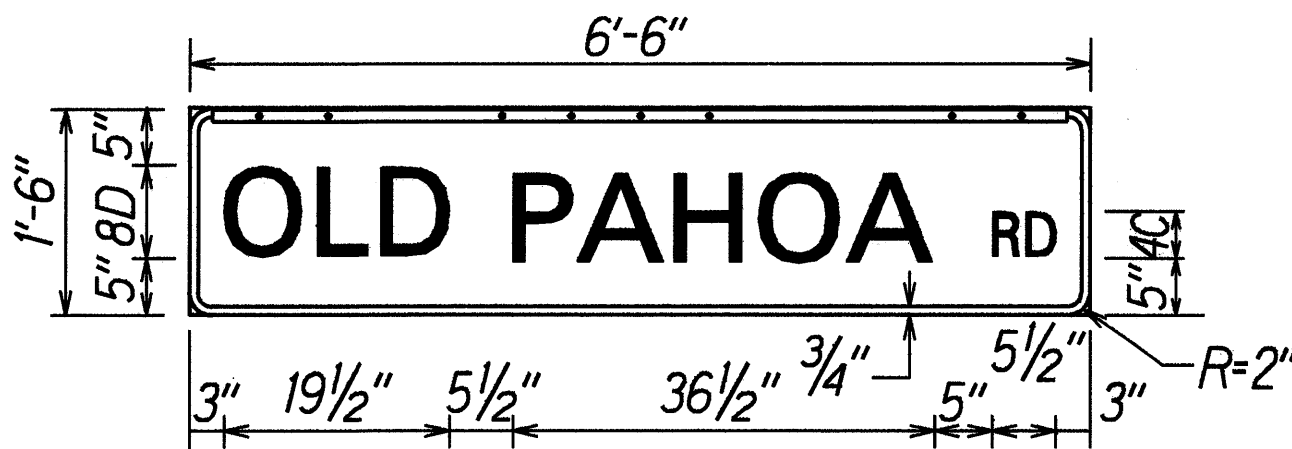


STREET NAME SIGN MOUNTING
ON MAST ARM



(Rear View)

PANEL & SWING BRACKET LAYOUT
FOR STREET NAME SIGN



STATE OF HAWAII
DEPARTMENT OF TRANSPORTATION
HIGHWAYS DIVISION

SIGN MOUNTING DETAIL

KEAAU-PAHOA ROAD
Installation of Traffic Signals at
Pahoa-Kapoho Road
Project No. 130A-01-99

Scale: NTS Date: April, 2000

SHEET No. 1 OF 1 SHEETS

Note: Dimensions may vary slightly.

SURVEY PLOTTED BY	DATE
DRAWN BY	
CHECKED BY	
DESIGNED BY	
NOTED BY	
ORIGINAL PLAN	
NOTE BOOK	
REVISIONS	
1	
2	
3	
4	
5	
6	
7	
8	
9	
10	
11	
12	
13	
14	