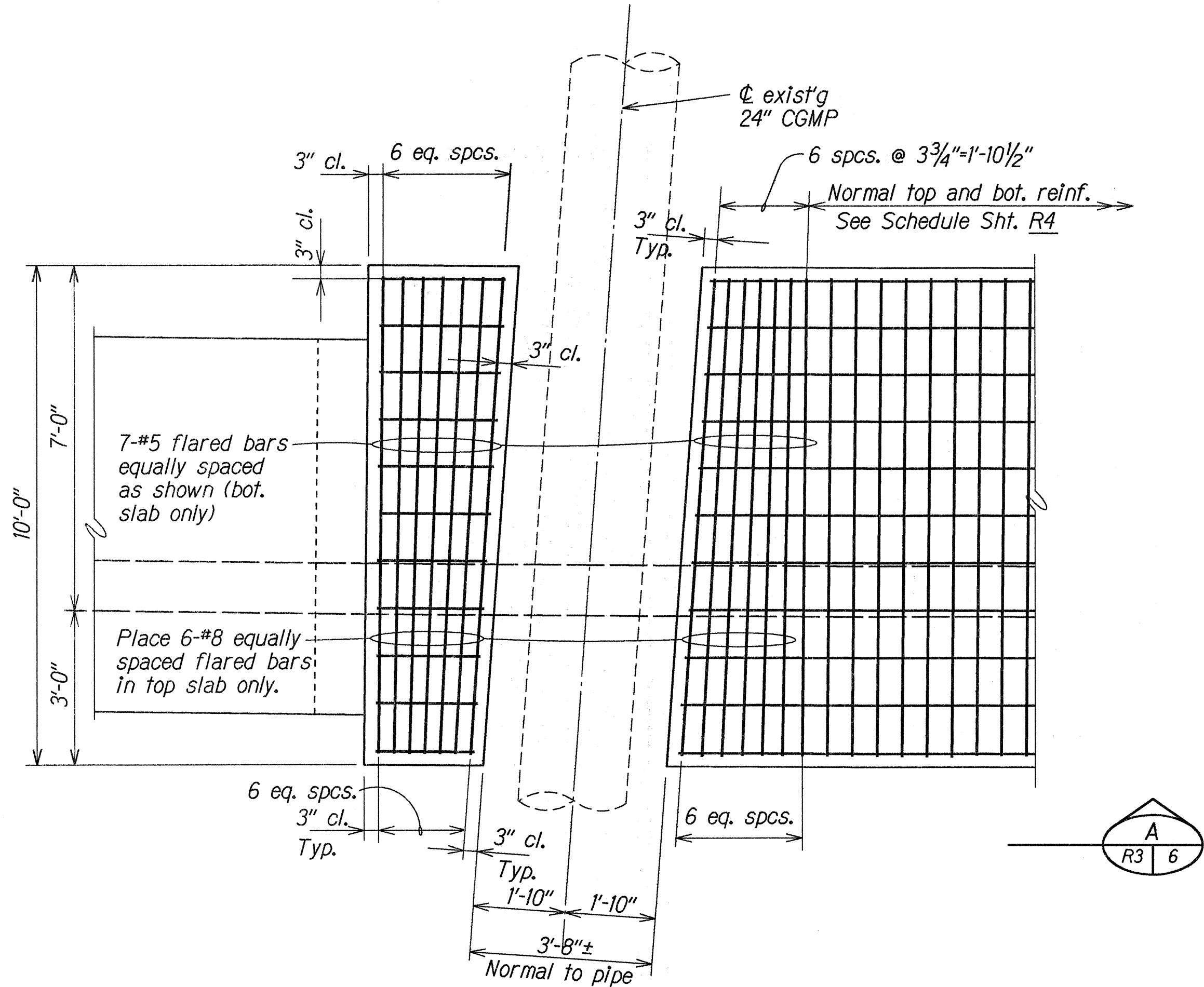


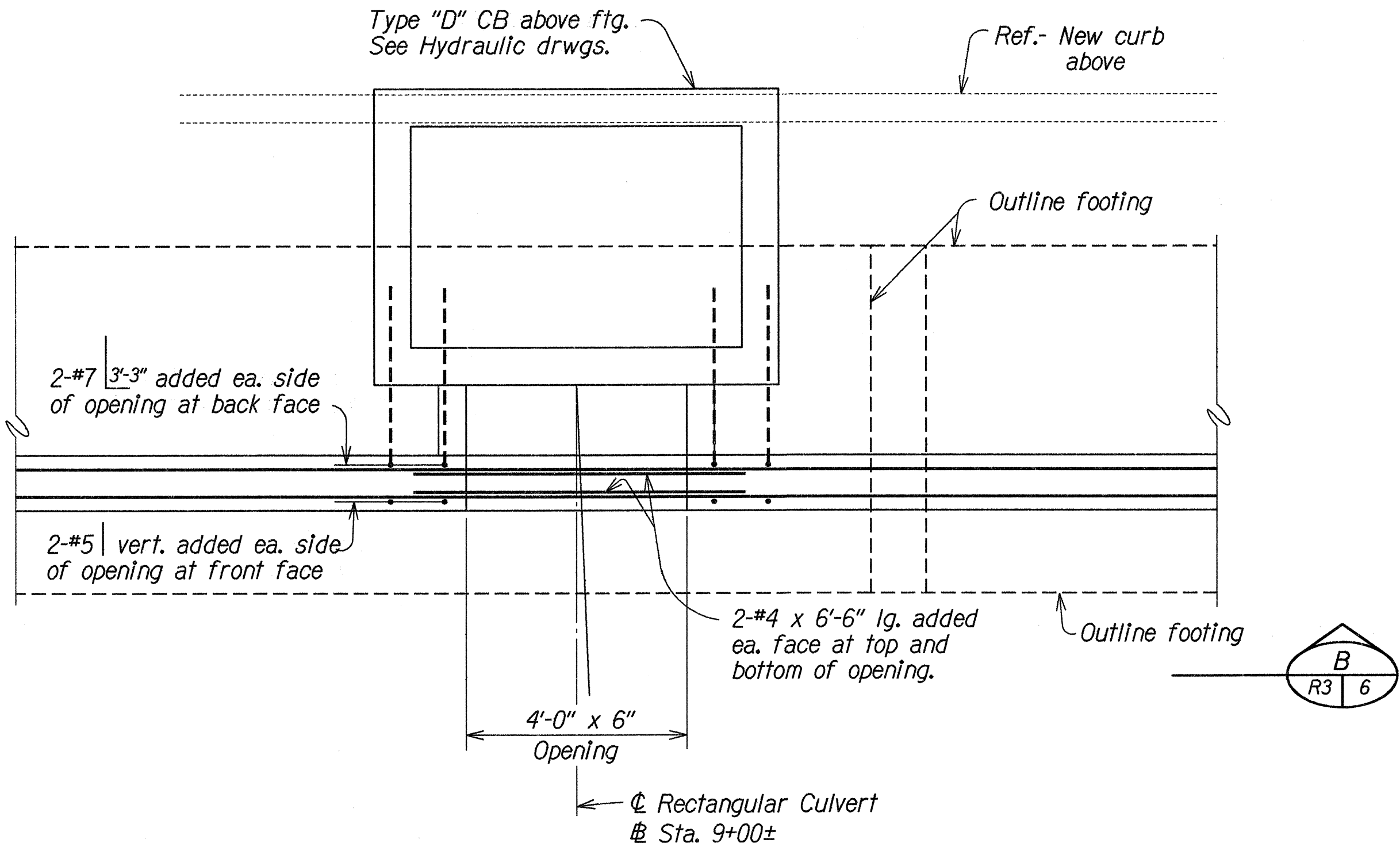
FED. ROAD DIST. NO.	STATE	PROJ. NO.	FISCAL YEAR	SHEET NO.	TOTAL SHEETS
HAWAII	HAW.	130B-01-91	1991	14	26

NOTE:

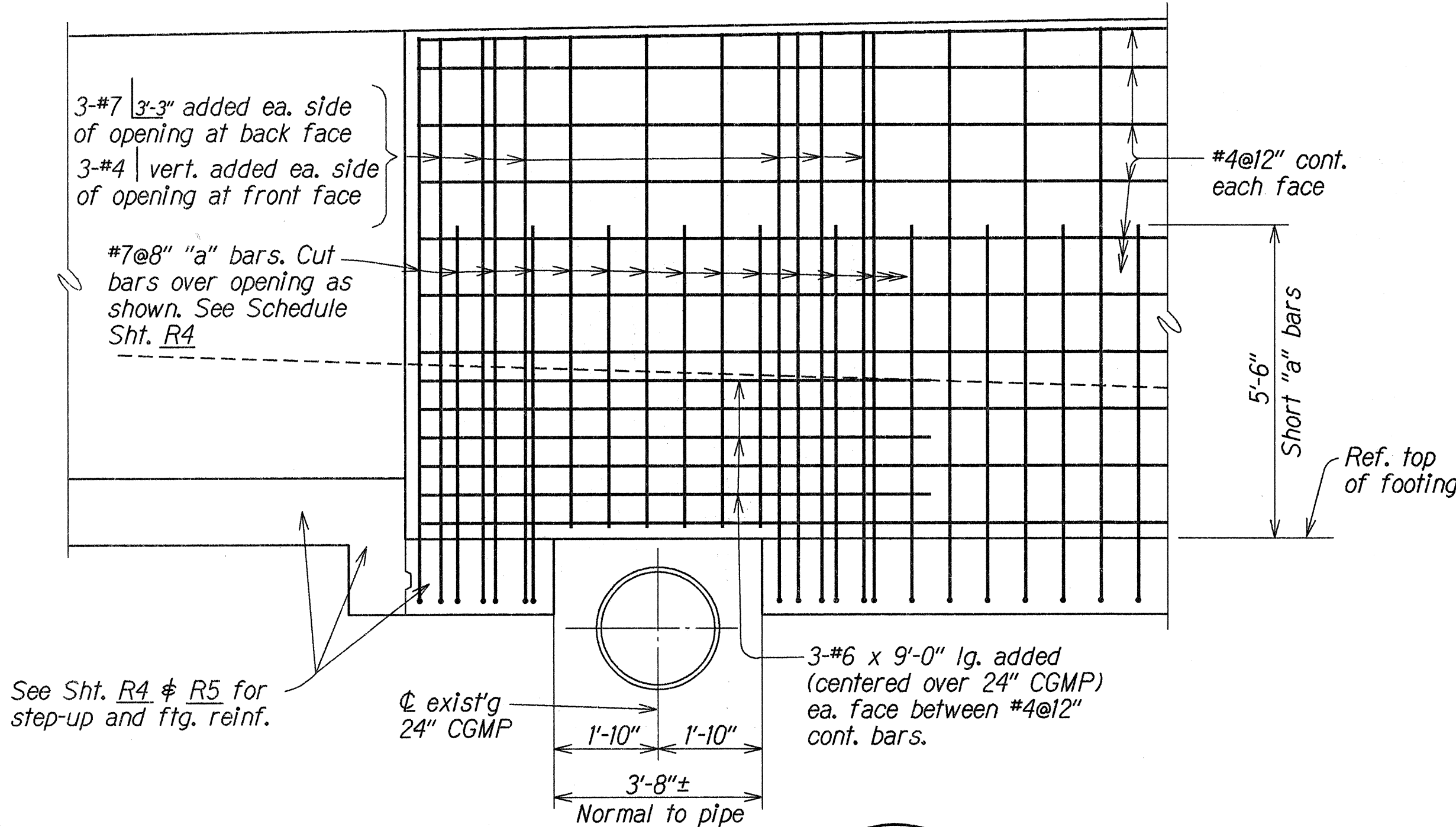
- 4'-0" x 6" rectangular culvert to be located by Engineer. Locate opening a minimum of 4'-0" from contraction joint.
- For further details see Sht. 11.



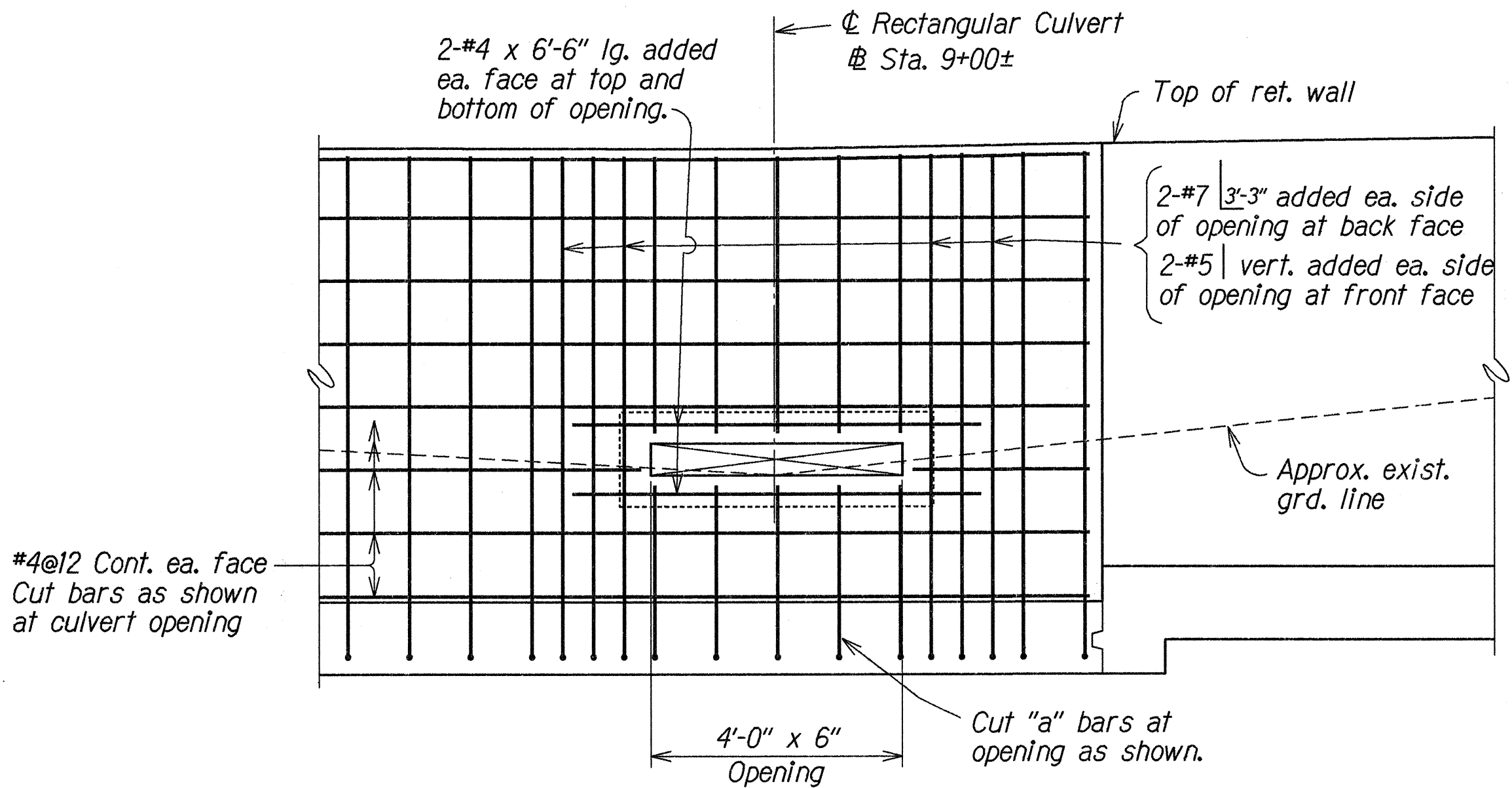
PART FOOTING PLAN
BOTTOM SLAB REINFORCEMENT AT 24" CGMP
 (TOP SLAB REINFORCEMENT AS NOTED)
 Scale: 1/2"=1'-0"



PART PLAN - RETAINING WALL REINFORCEMENT AT
4'-0" X 6" RECTANGULAR CULVERT
 Scale: 1/2"=1'-0"



PART ELEVATION
 Scale: 1/2"=1'-0"



PART ELEVATION
 Scale: 1/2"=1'-0"

STATE OF HAWAII
 DEPARTMENT OF TRANSPORTATION
 HIGHWAYS DIVISION
RETAINING WALLS NO. 1, NO. 2 AND NO. 3
SPECIAL WALL REINFORCEMENT AT 24" CGMP
AND AT 4'-0" X 6" RECTANGULAR CULVERT
 KEAAU-PAHOA ROAD IMPROVEMENTS
 VICINITY OF KEAAU SCHOOL
 Project No. 130B-01-91
 Scale: As Noted Date: May 1991
 SHEET No. R3 OF 6 SHEETS