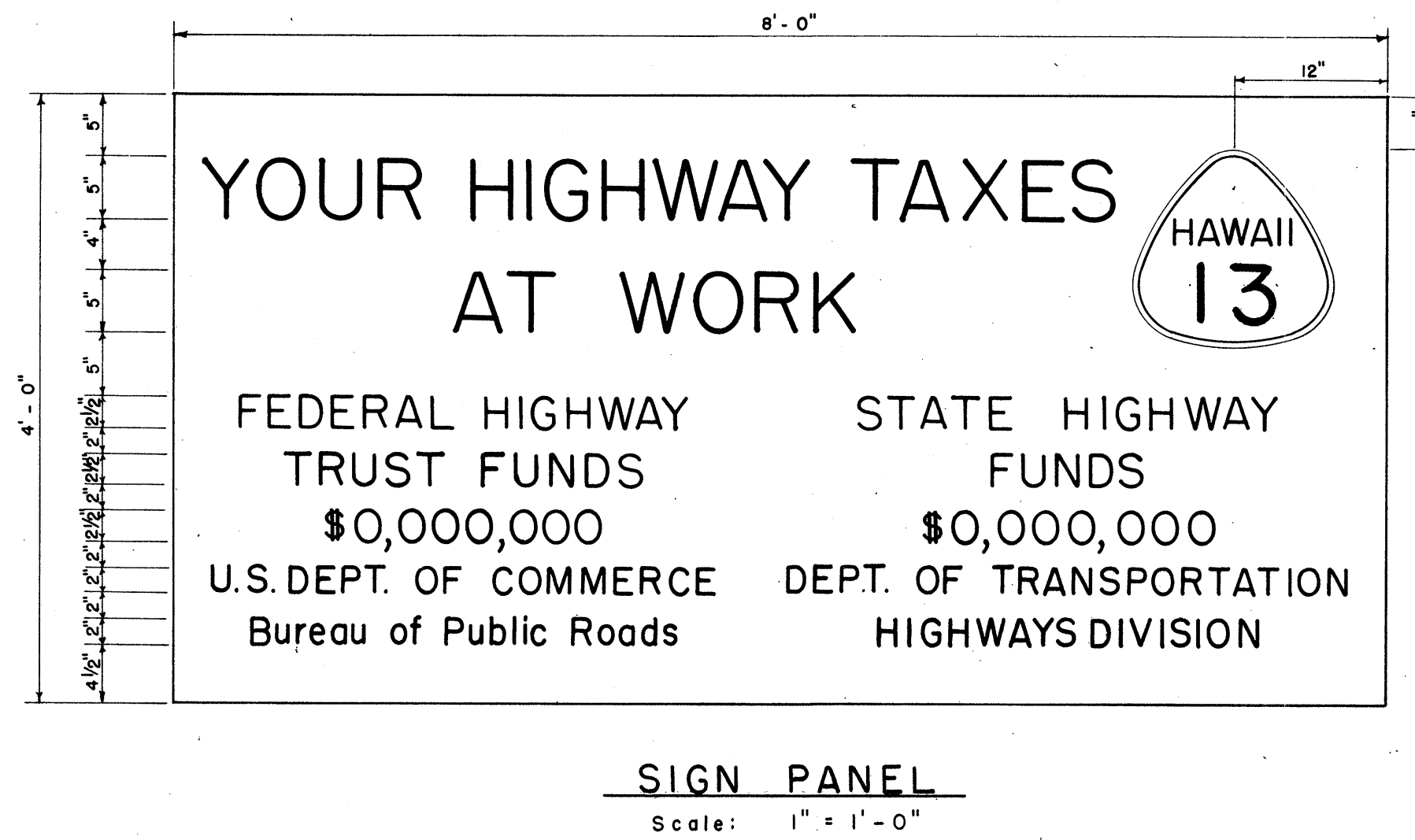
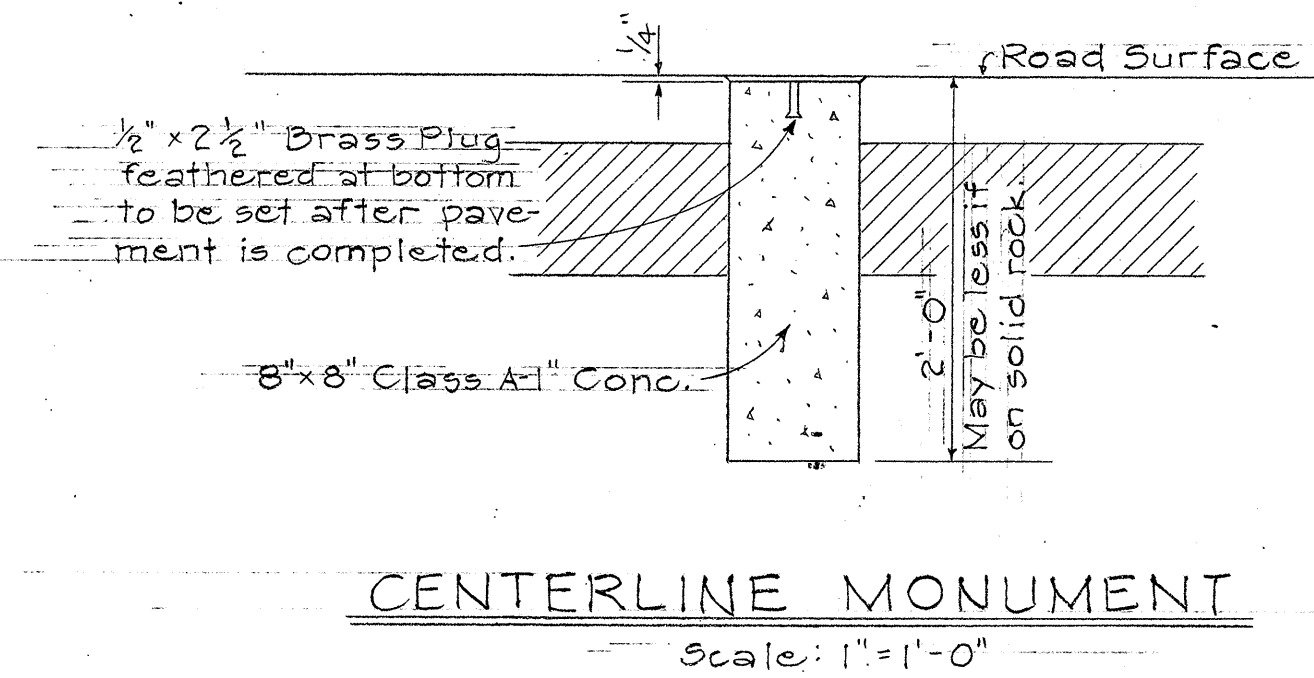
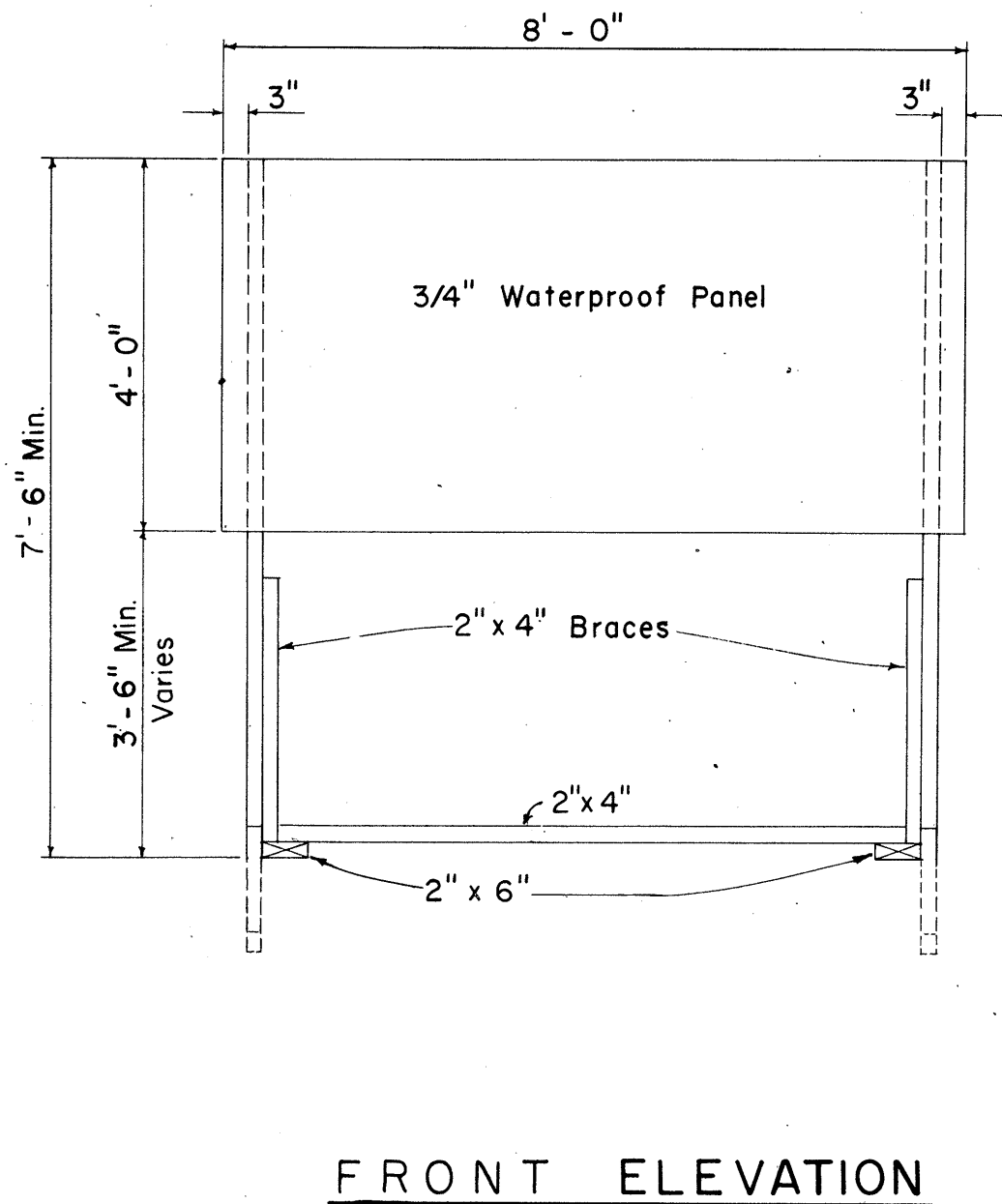
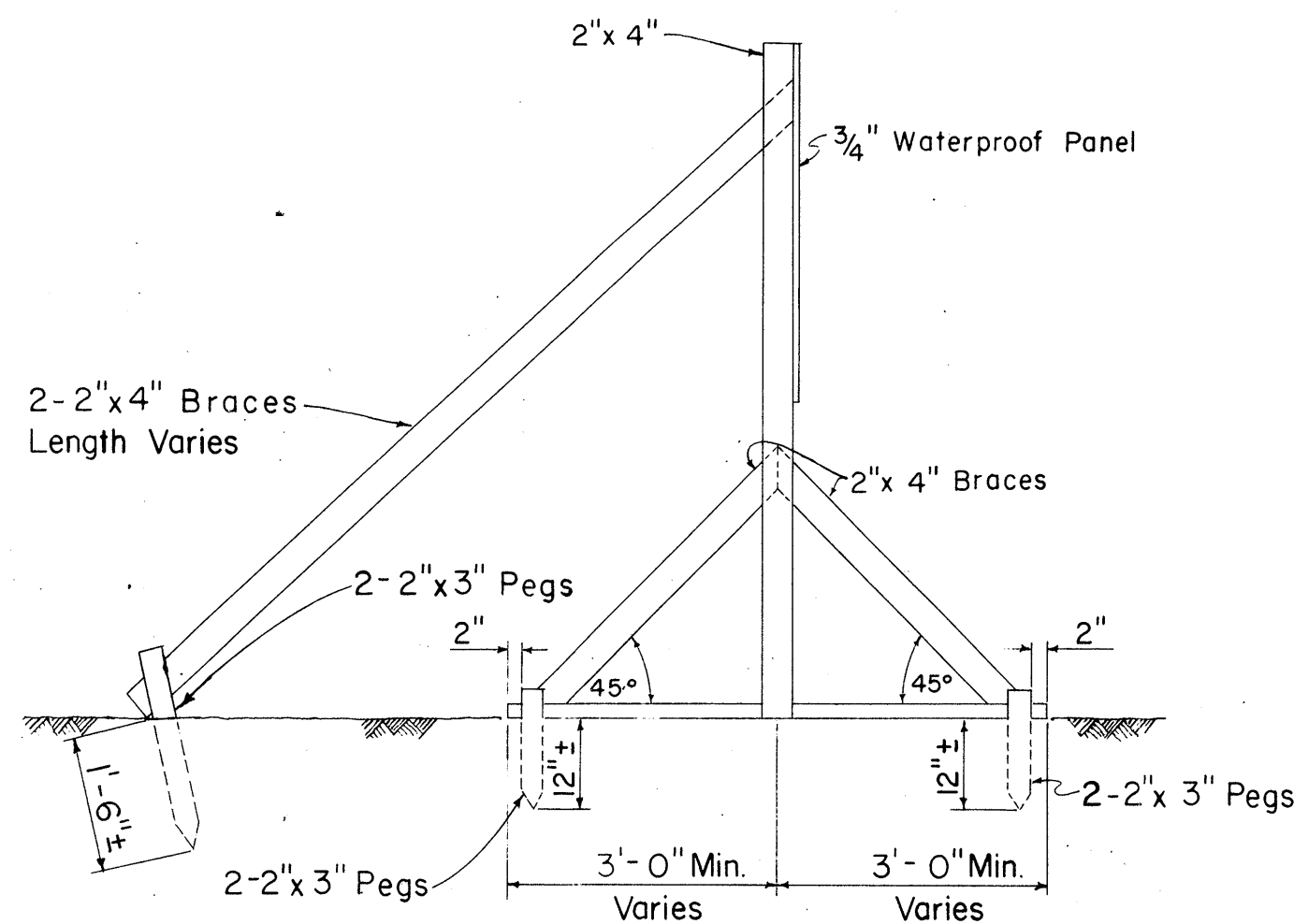
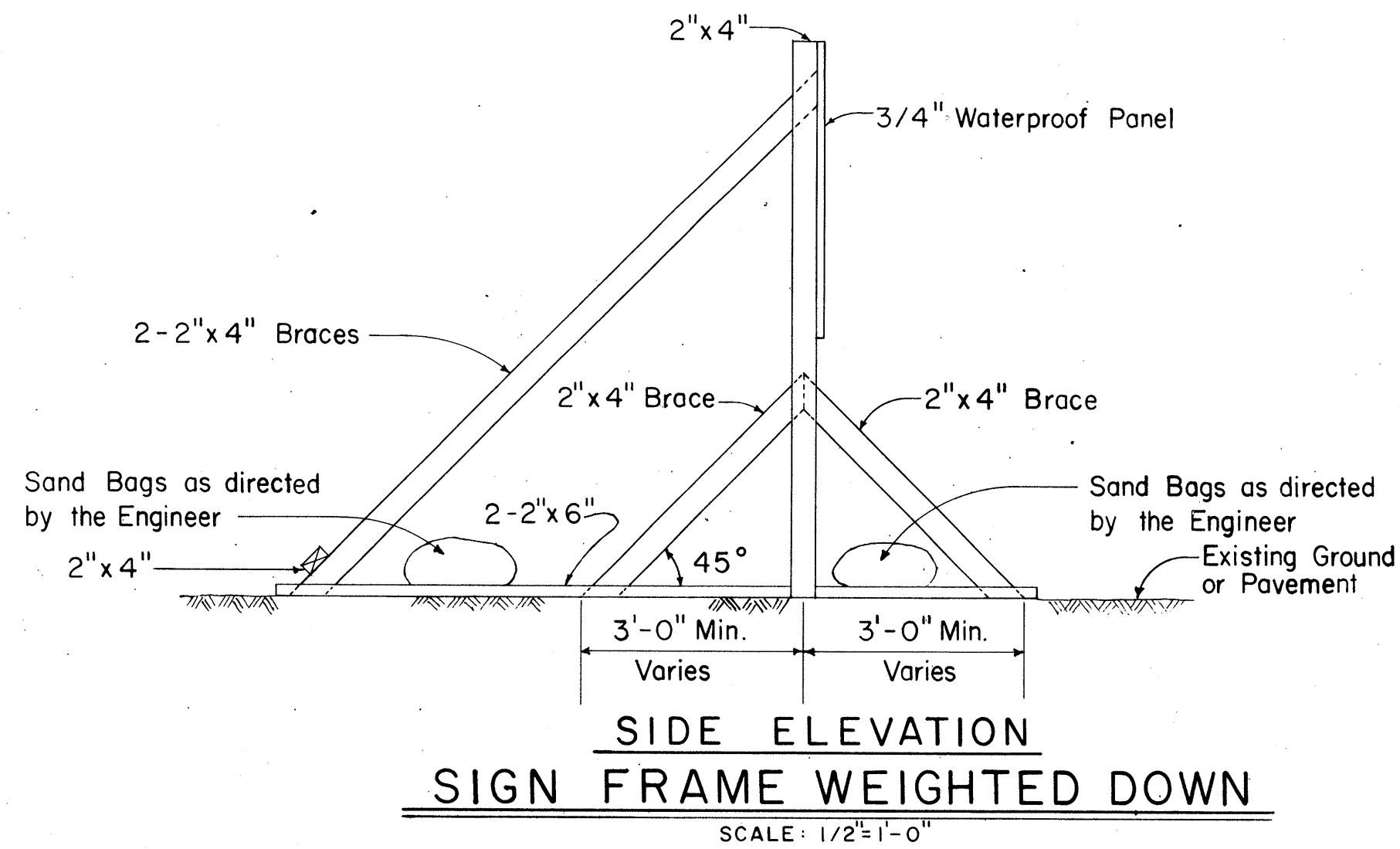


FED. ROAD DIST. NO.	STATE	FED. AID PROJ. NO.	FISCAL YEAR	SHEET NO.	TOTAL SHEETS
HAWAII	HAW.	5-0130(9)	1966	5	13

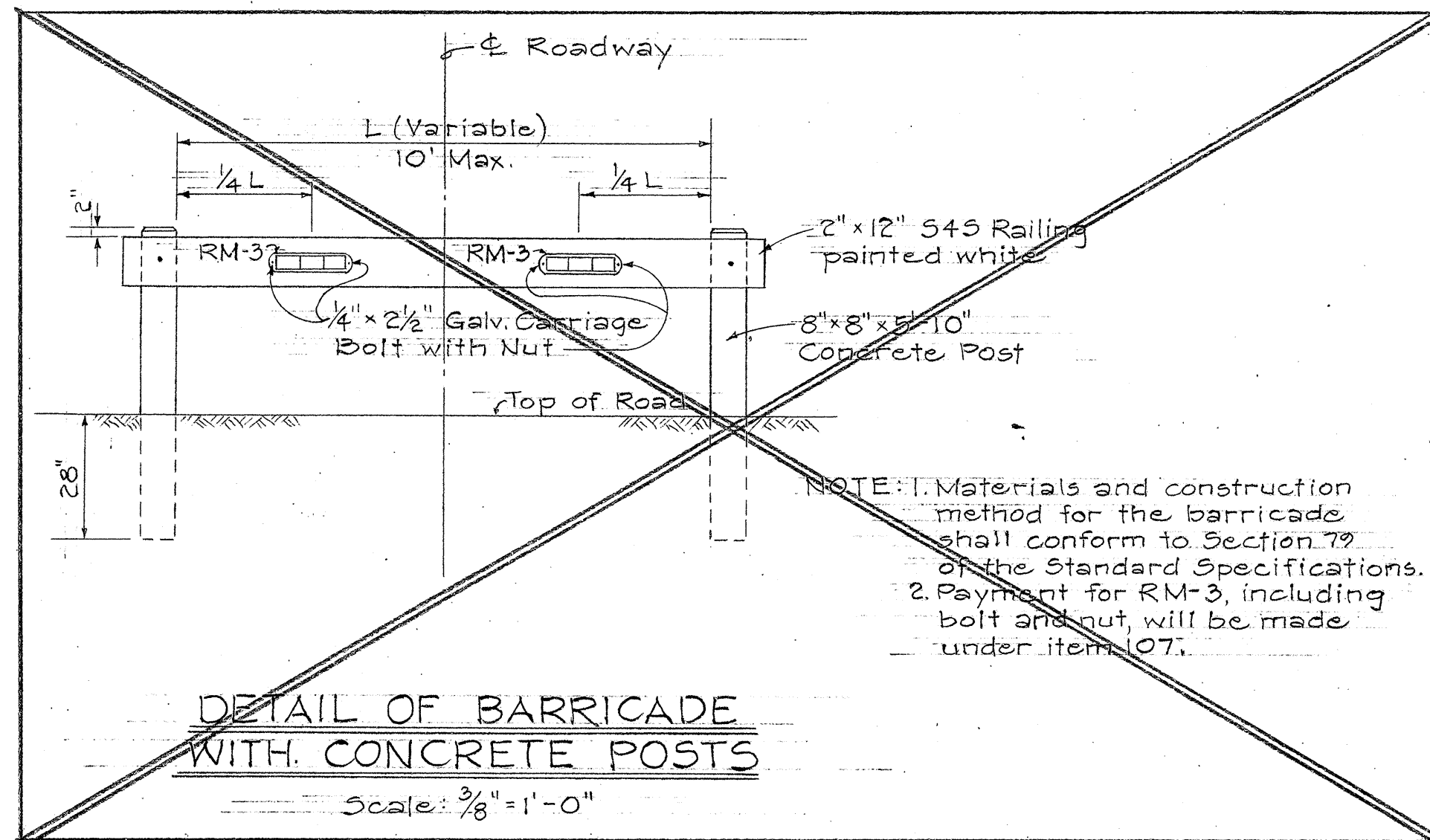


### PRIMARY AND SECONDARY SYSTEMS CONSTRUCTION IDENTIFICATION SIGN

Scale: As Shown

### CONSTRUCTION IDENTIFICATION SIGN NOTES

- The Contractor shall construct, install and maintain the Construction Identification Signs, at the locations shown on the plans and as ordered by the Engineer.
- All costs incurred in the construction, installation and maintenance of the Construction Identification Signs, will not be paid for separately, but shall be considered as included in the unit price paid for the various items in the proposal.
- The Construction Identification Signs shall be removed and stockpiled at the completion of the project as ordered by the Engineer and are to become State Property.
- The exact figures for the various funds involved will be furnished to the Contractor for the incorporation in the Construction Identification Signs.
- The legend shall be black on white background unless otherwise specified.
- Refer to Sheet No. 7 for details on the exact shape and size of the State route marker to be shown on these Construction Identification Signs.
- All letters shall be of size and design shown and shall conform with Standard Alphabets for Highway Signs, Bureau of Public Roads, 1952. Use Series "C" letters unless otherwise noted.



### STATE OF HAWAII DEPARTMENT OF TRANSPORTATION MISCELLANEOUS DETAILS

KEAAU - PAHOA ROAD  
PROJ. NO. 5-0130 (9)

Scales: As Noted August 1966

SHEET No. OF SHEETS