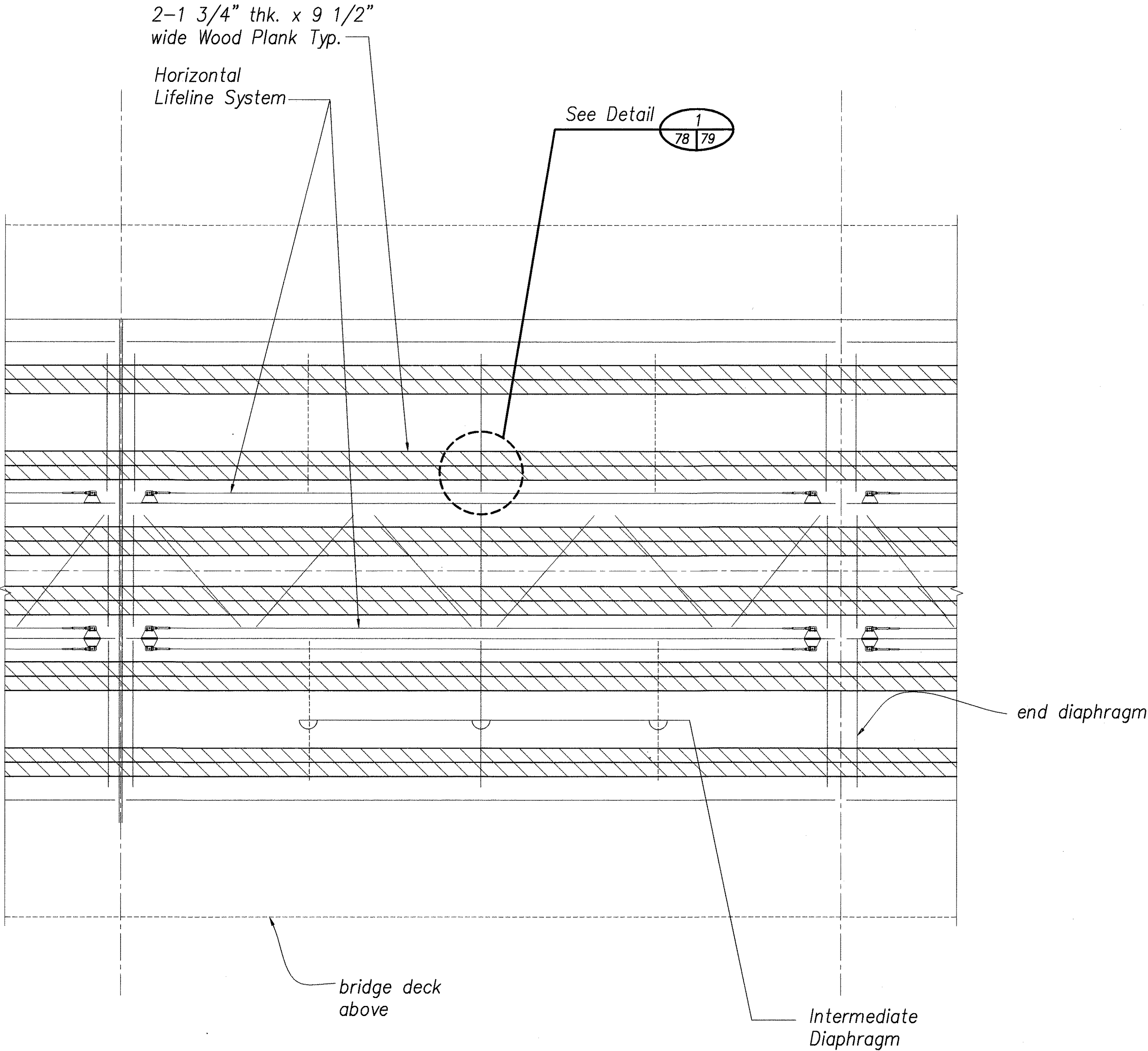


FED. ROAD DIST. NO.	STATE	FED. AID PROJ. NO.	FISCAL YEAR	SHEET NO.	TOTAL SHEETS
HAWAII	HAW.	HWY-H-09-99M	2005	78	81

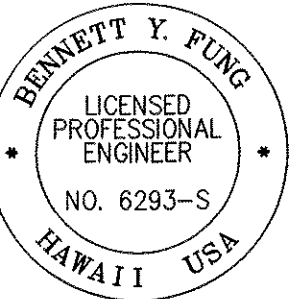


GIRDER PLAN
 Scale: 1/4" = 1'-0" 18, 27, 28, 39, 41, 46, 78

ACCESS PLANK SYSTEM NOTES

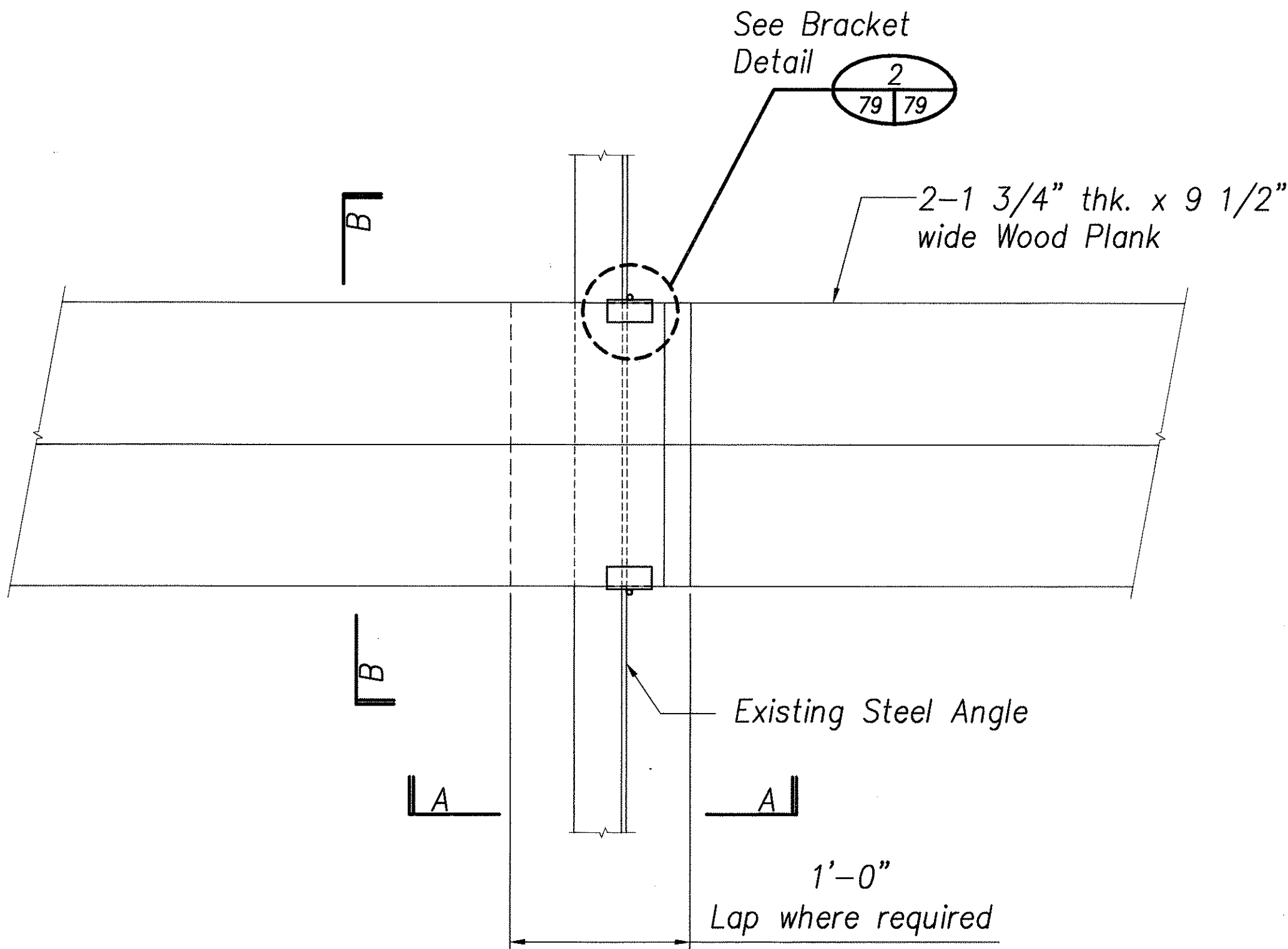
- The access plank system shall be an engineered wood product with the following characteristics:
 - Wood planking shall be scaffold grade with OSHA approved label and meet or exceed OSHA 29CFR1926.451 standards.
 - Wood planking shall be laminated veneer lumber, made from Douglas Fir, with waterproof adhesive and end sealer.
 - Wood planking shall be 1 3/4" thick x 9 1/2" wide, length as required.
 - Planks shall be pressure treated with Tribucide II.
 - Prior to its erection, wood planking should be inspected before each use for holes, knots, cracks, splits, warpage and other problems that affect the structural integrity of the wood.
 - Each plank must overlap the support by a minimum of 6 inches or be cleated. Planks should also not extend beyond the support by more than 18 inches. Planking on continuous runs must extend over the supports and overlap each other by at least 12 inches.
 - Loads on planks should be evenly distributed and not exceed the allowable loads for the type of plank being used. Planks should be secured to scaffolding as indicated to prevent displacement or dislodging because of work activity and/or high winds.
- Material known to meet requirements:
 Microllam LVL Scaffold Planks manufactured by Trus Joist, A Weyerhaeuser Business, Boise, ID 83706.
- Provide access planks as shown on plans. Each plank shall be held in place at each end with brackets as shown on sheet 79.

SURVEY PLOTTED BY	DATE
DRAWN BY	
TRACED BY	
DESIGNED BY	
CHECKED BY	
NO.	

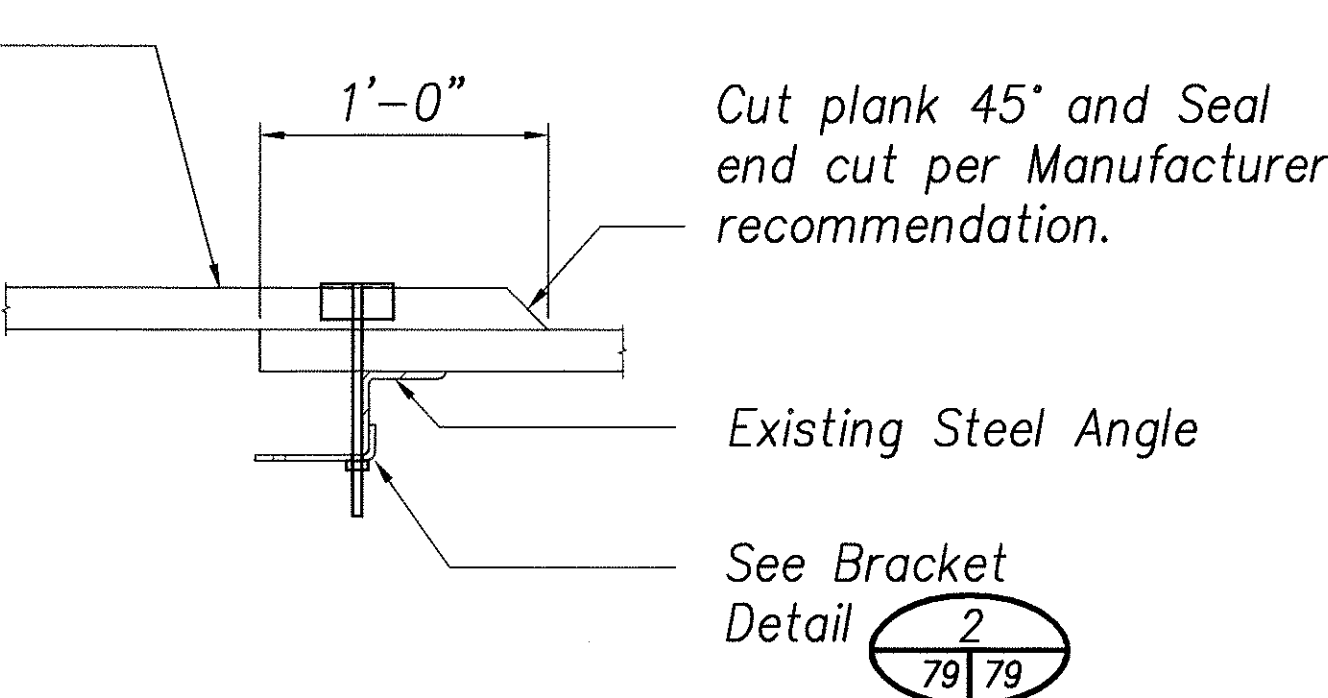
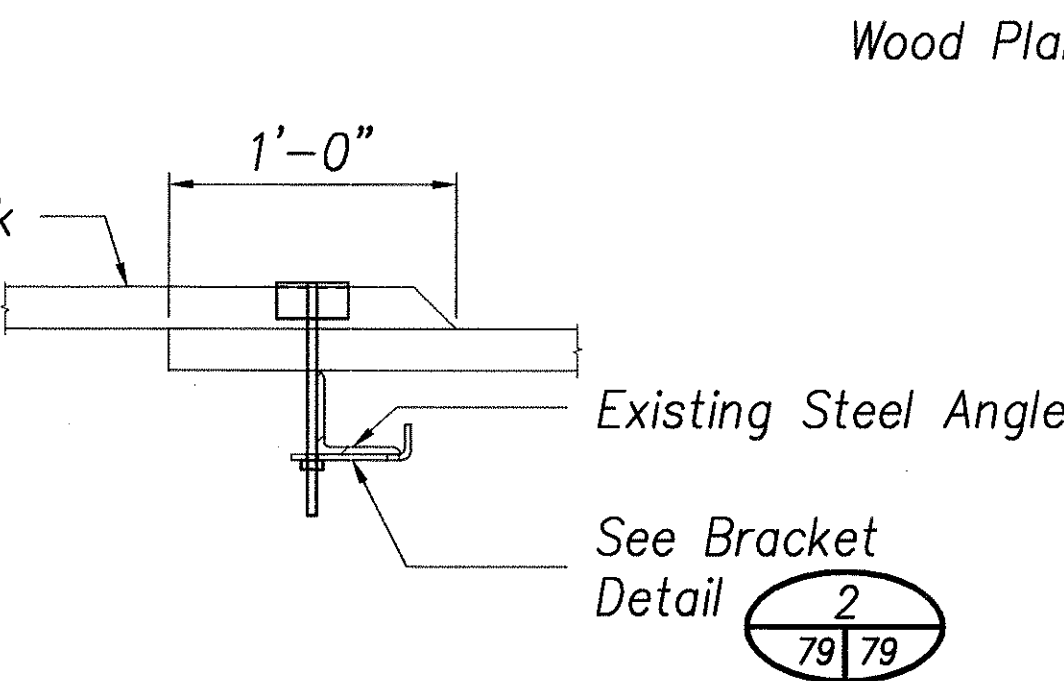

 THIS WORK WAS PREPARED BY ME OR UNDER MY SUPERVISION
Bennett Yung
 SIGNATURE EXP. DATE OF THE LICENSE

STATE OF HAWAII
 DEPARTMENT OF TRANSPORTATION
 HIGHWAYS DIVISION
**ACCESS PLANK
 SYSTEM & NOTES**
 MAINTENANCE PLATFORM ON VARIOUS BRIDGES
 PROJECT NO. HWY-H-09-99M
 Scale: 1/4" = 1'-0" Date: Apr. 2005
 Sheet No. 78 Of 81 Sheets

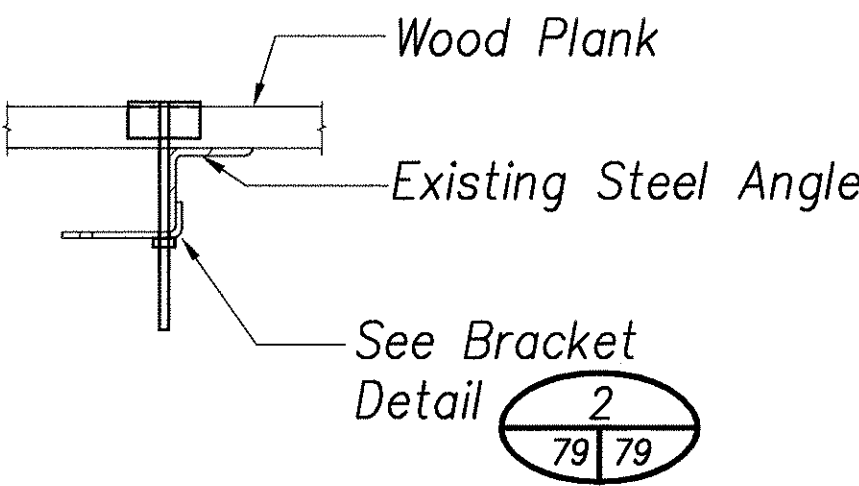
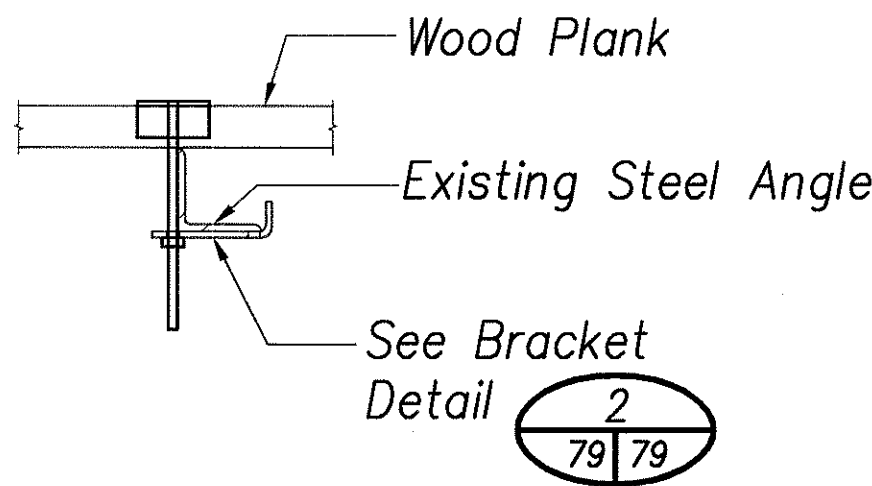
FED. ROAD DIST. NO.	STATE	FED. AID PROJ. NO.	FISCAL YEAR	SHEET NO.	TOTAL SHEETS
HAWAII	HAW.	HWY-H-09-99M	2005	79	81



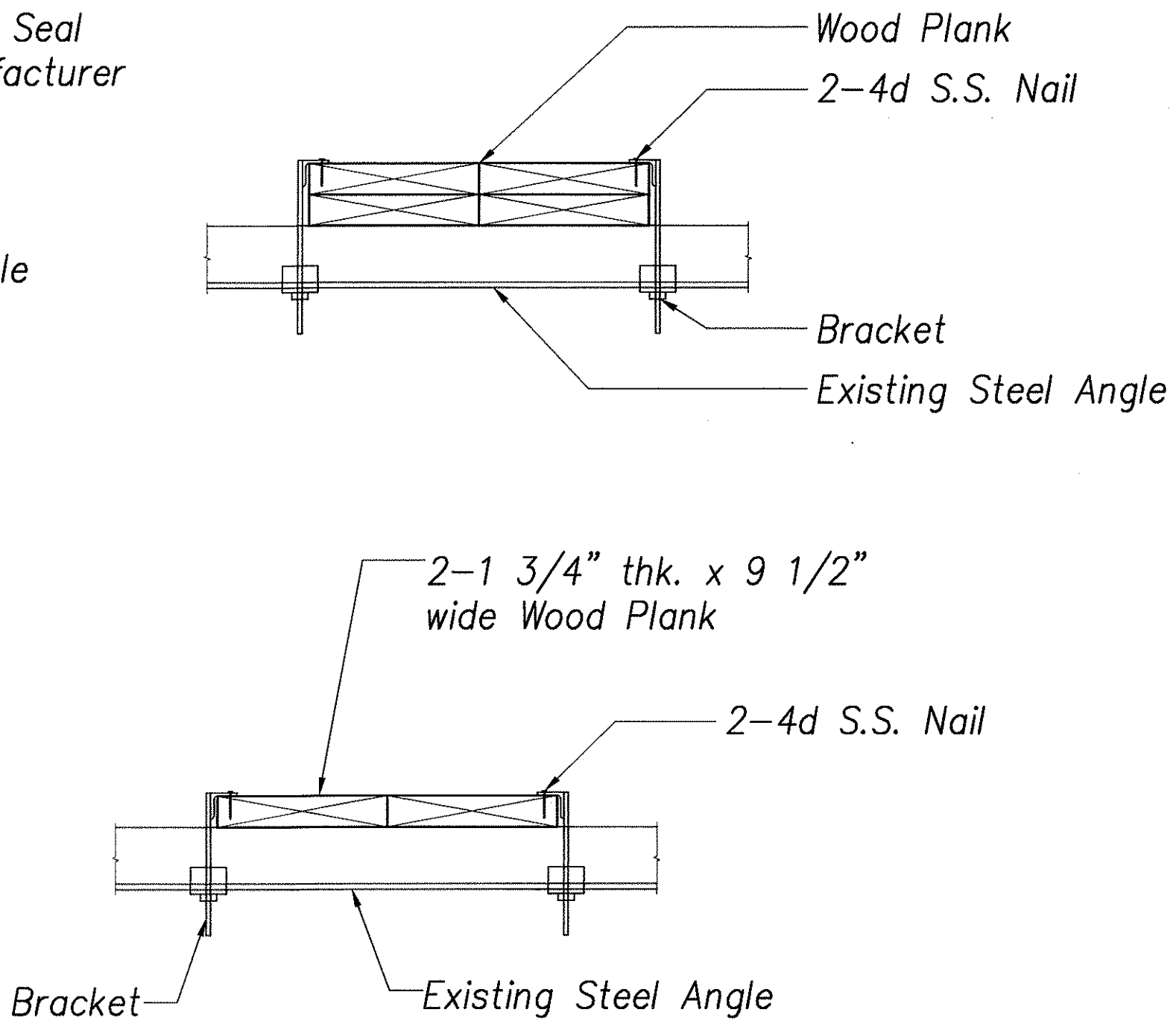
DETAILS
Scale: 1 1/2" = 1'-0" 1
78 79



PLANK WITH OVERLAP

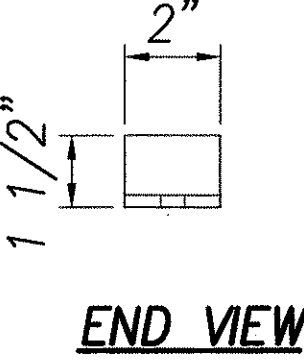
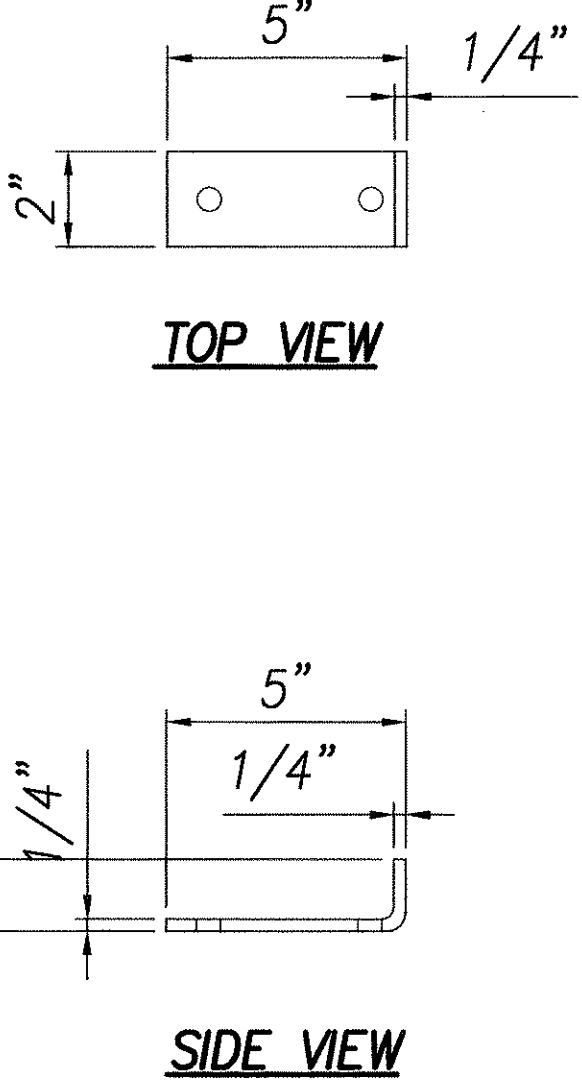
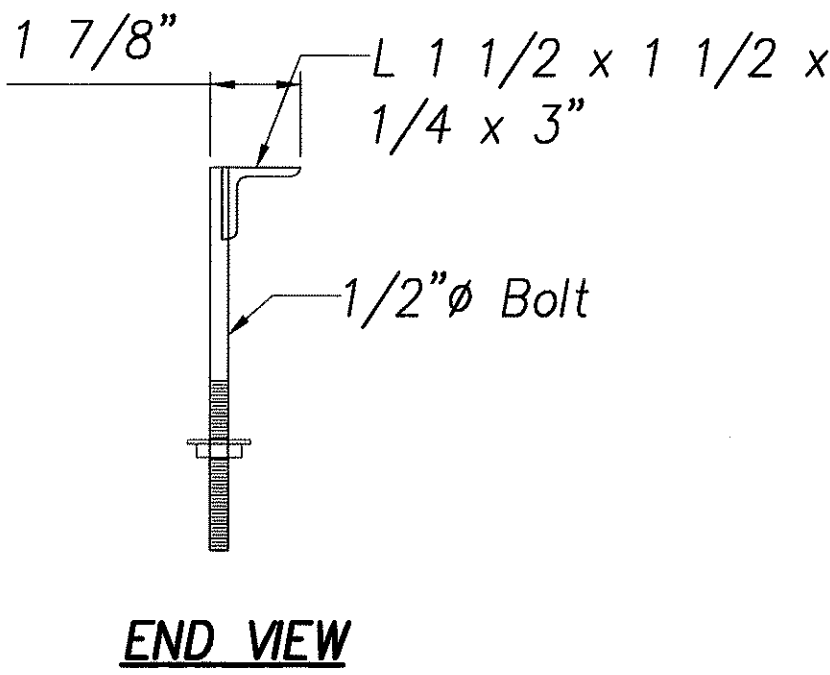
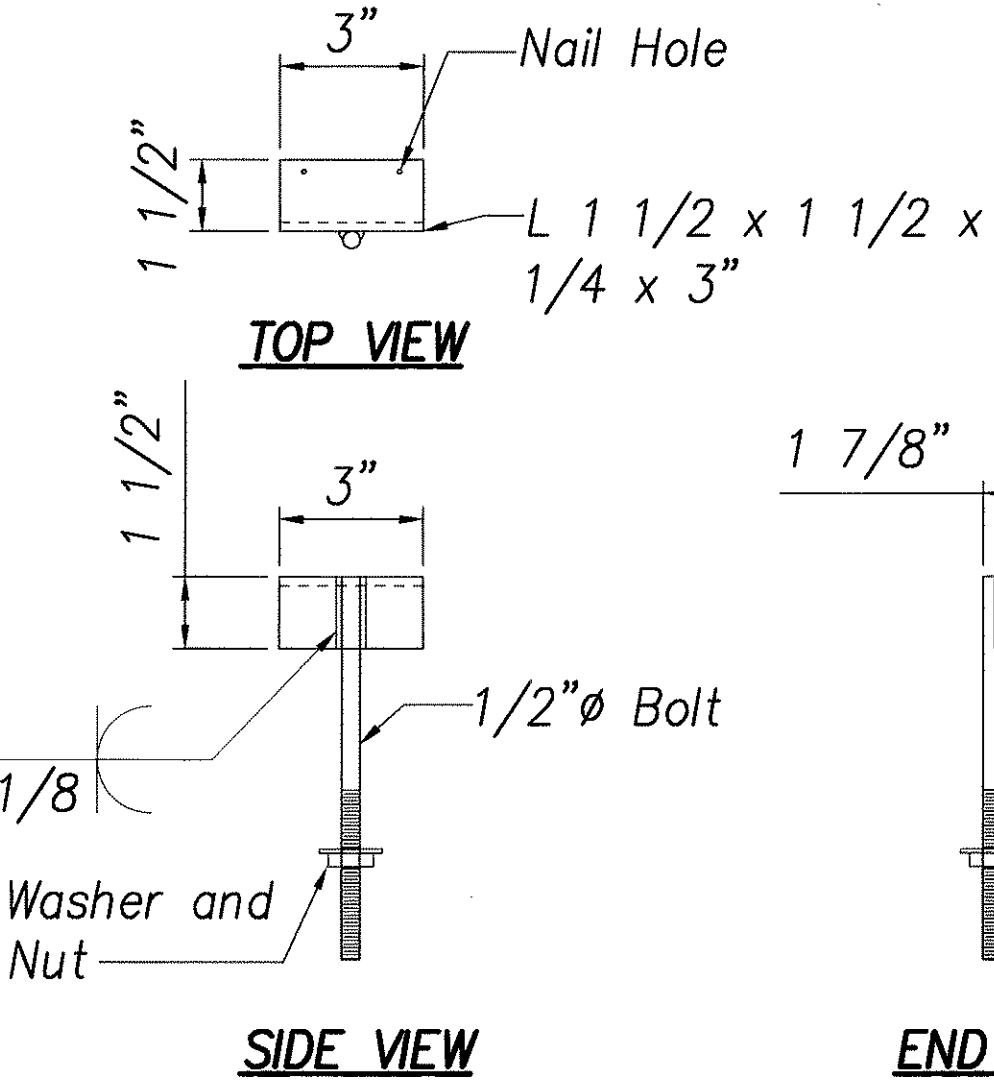


PLANK W/O OVERLAP



SECTION B-B
SCALE: 1/2" = 1'-0"

SECTION A-A
SCALE: 1/2" = 1'-0"

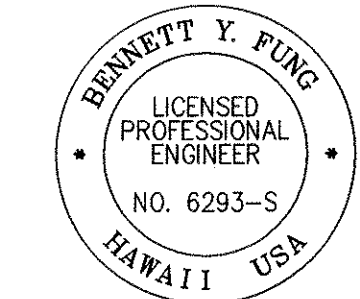


NOTE:

- Contractor shall field measure existing angle size prior to fabrication.
- Hot-dipped-galvanize and paint nut, bolt and bracket after fabrication. Threaded parts shall be painted after installation.

TYPICAL ACCESS PLANK BRACKET DETAILS
Scale: 3" = 1'-0" 2
79 79

ORIGINAL PLAN	SURVEY PLOTTED BY	DATE
NOTE BOOK	DRAWN BY	
No.	DESIGNED BY	
	CHECKED BY	



THIS WORK WAS PREPARED BY ME OR UNDER MY SUPERVISION
Bennett Y. Fung
SIGNATURE EXP. DATE OF THE LICENSE 4/30/06

STATE OF HAWAII
DEPARTMENT OF TRANSPORTATION
HIGHWAYS DIVISION
ACCESS PLANK
SECTIONS AND DETAILS
ACCESS PLANK
MAINTENANCE PLATFORM ON VARIOUS BRIDGES
PROJECT NO. HWY-H-09-99M
Scale: AS SHOWN Date: Apr. 2005
Sheet No. 79 Of 81 Sheets