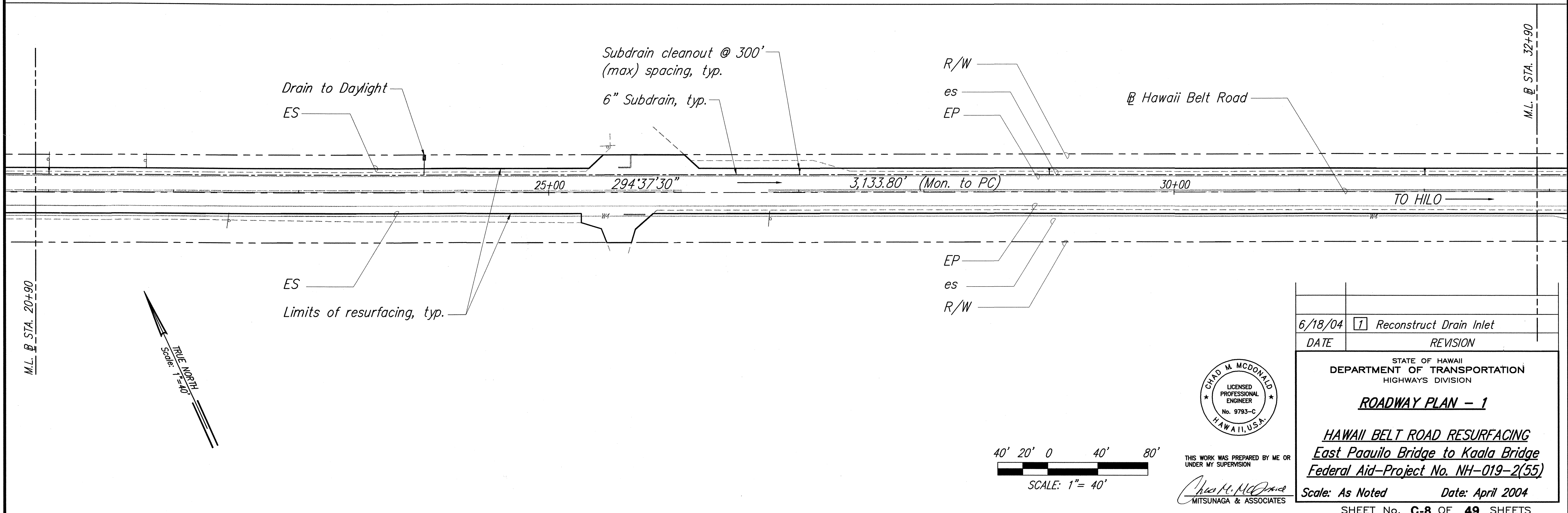
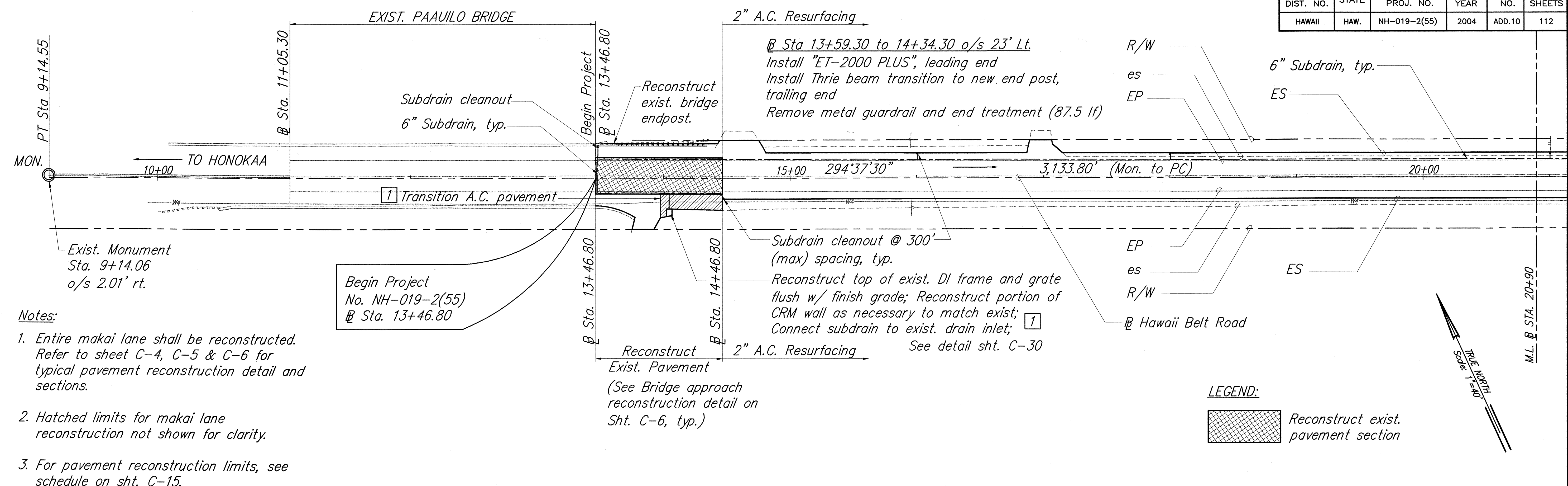
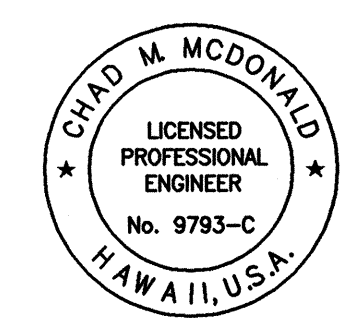
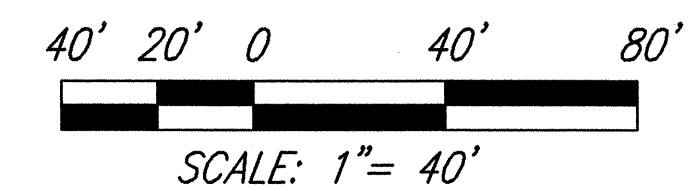


FED. ROAD DIST. NO.	STATE	FED. AID PROJ. NO.	FISCAL YEAR	SHEET NO.	TOTAL SHEETS
HAWAII	HAW.	NH-019-2(55)	2004	ADD.10	112



ORIGINAL PLAN	DATE
DESIGNED BY	6/18/04
DESIGNED BY	6/18/04
DESIGNED BY	6/18/04
DESIGNED BY	6/18/04
DESIGNED BY	6/18/04



6/18/04	1	Reconstruct Drain Inlet
DATE	REVISION	

STATE OF HAWAII
DEPARTMENT OF TRANSPORTATION
HIGHWAYS DIVISION

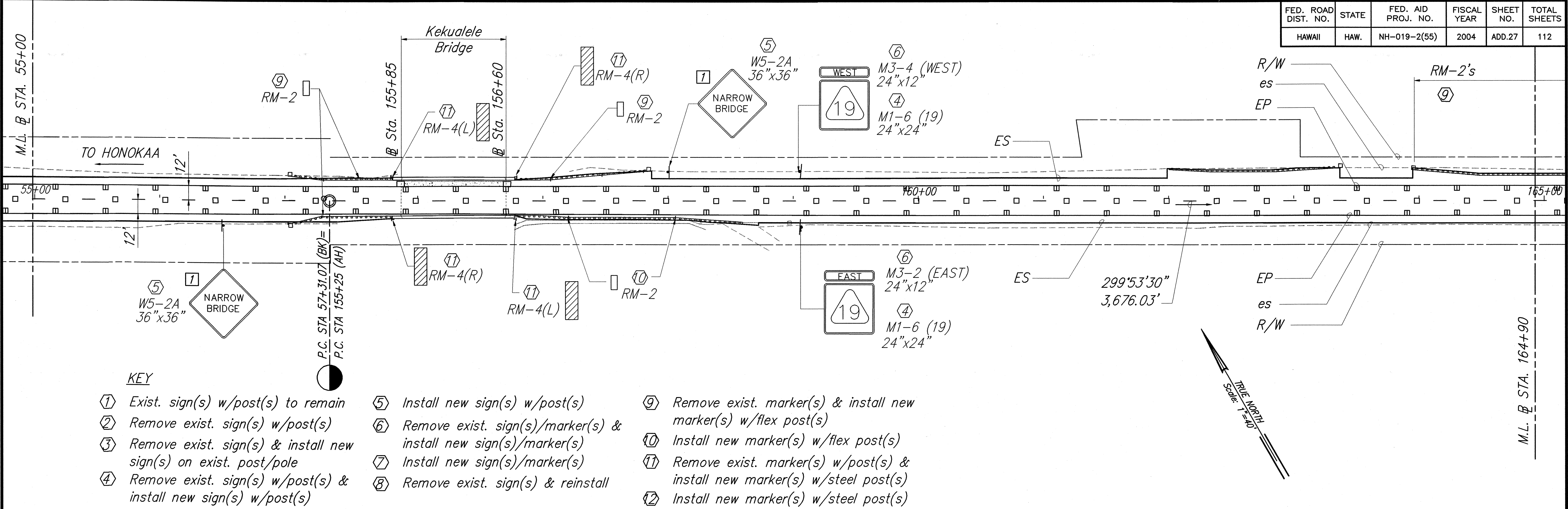
ROADWAY PLAN - 1

HAWAII BELT ROAD RESURFACING
East Paaui Bridge to Kaala Bridge
Federal Aid-Project No. NH-019-2(55)

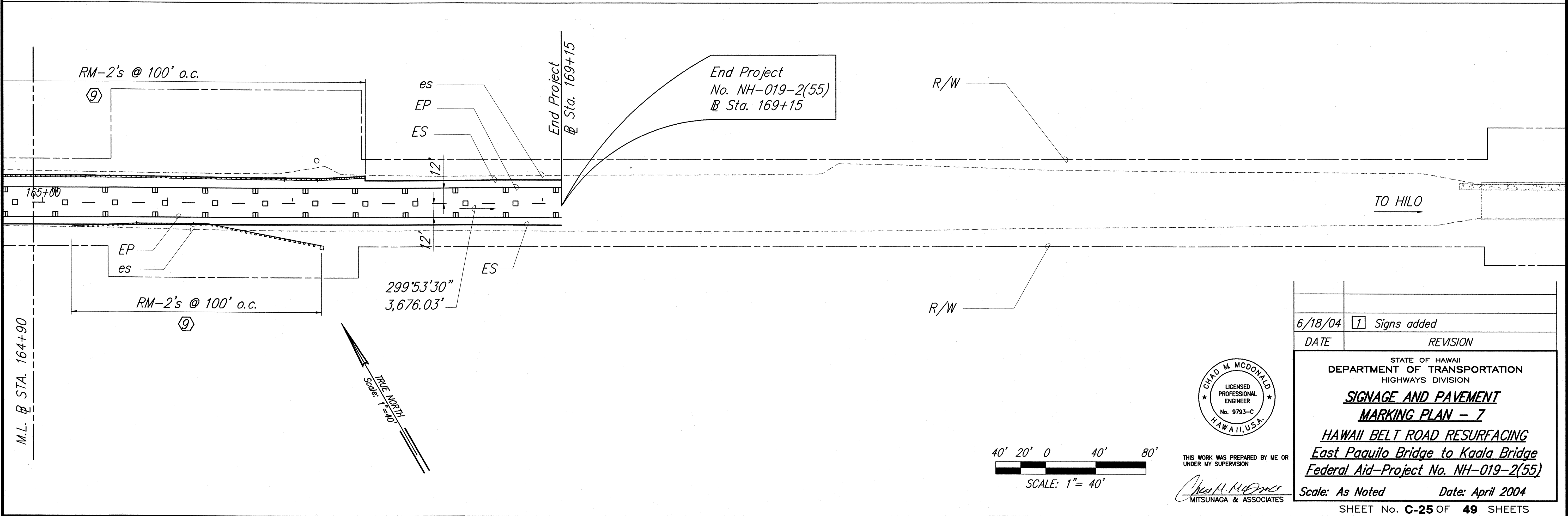
Scale: As Noted Date: April 2004

SHEET No. C-8 OF 49 SHEETS

FED. ROAD DIST. NO.	STATE	FED. AID PROJ. NO.	FISCAL YEAR	SHEET NO.	TOTAL SHEETS
HAWAII	HAW.	NH-019-2(55)	2004	ADD.27	112

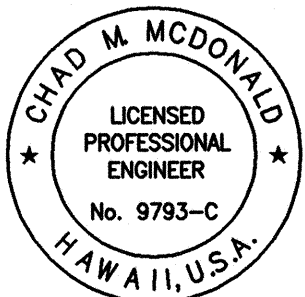


- KEY**
- ① Exist. sign(s) w/post(s) to remain
 - ② Remove exist. sign(s) w/post(s)
 - ③ Remove exist. sign(s) & install new sign(s) on exist. post/pole
 - ④ Remove exist. sign(s) w/post(s) & install new sign(s) w/post(s)
 - ⑤ Install new sign(s) w/post(s)
 - ⑥ Remove exist. sign(s)/marker(s) & install new sign(s)/marker(s)
 - ⑦ Install new sign(s)/marker(s)
 - ⑧ Remove exist. sign(s) & reinstall
 - ⑨ Remove exist. marker(s) & install new marker(s) w/flex post(s)
 - ⑩ Install new marker(s) w/flex post(s)
 - ⑪ Remove exist. marker(s) w/post(s) & install new marker(s) w/steel post(s)
 - ⑫ Install new marker(s) w/steel post(s)



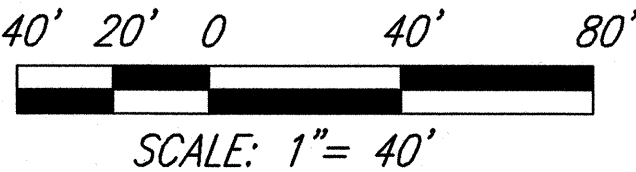
SURVEY PLOTTED BY	DATE
DRAWN BY	
DESIGNED BY	
QUANTITIES BY	
CHECKED BY	

ORIGINAL PLAN	No.
NOTE BOOK	

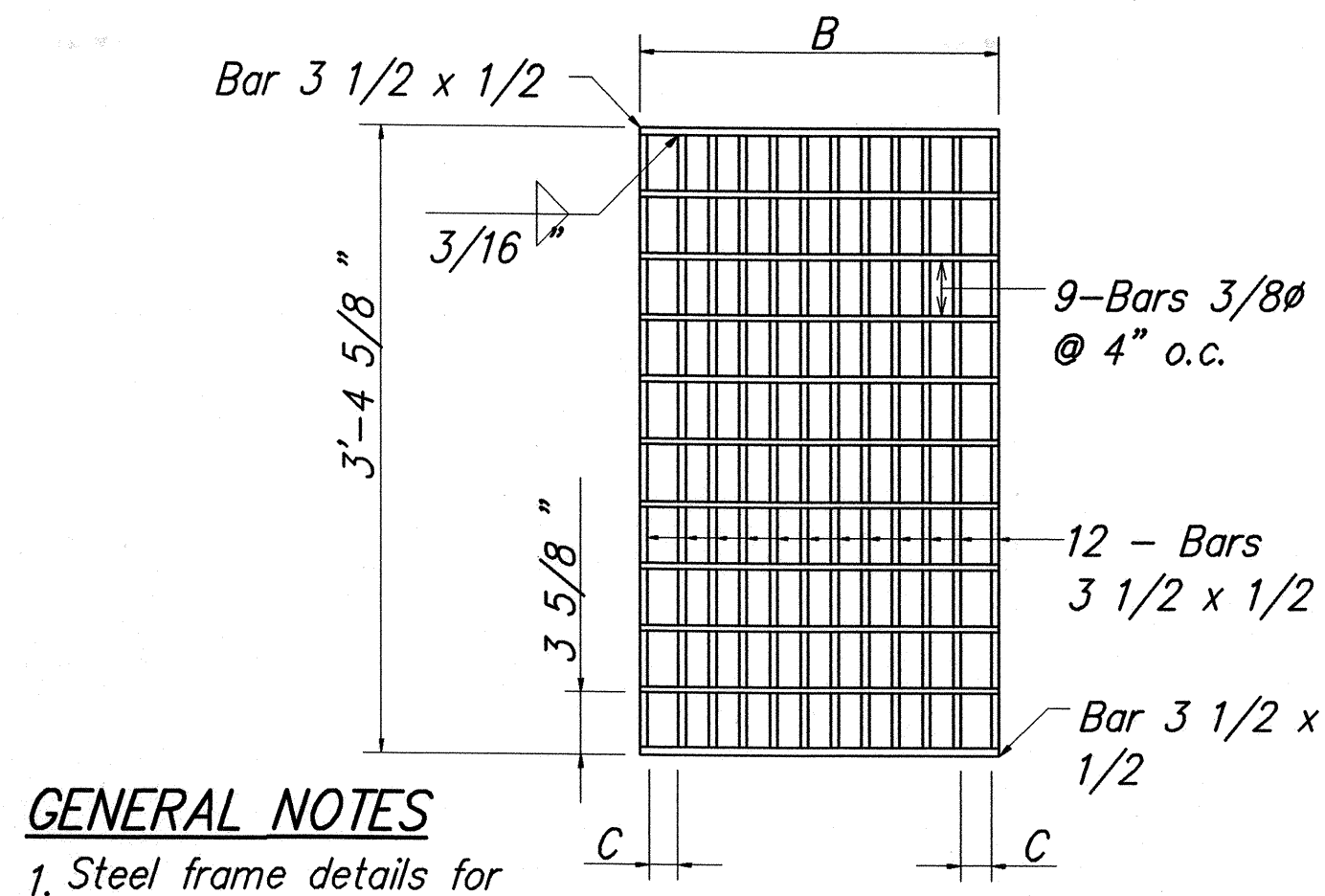


THIS WORK WAS PREPARED BY ME OR UNDER MY SUPERVISION

Chad M. McDonald
MITSUNAGA & ASSOCIATES



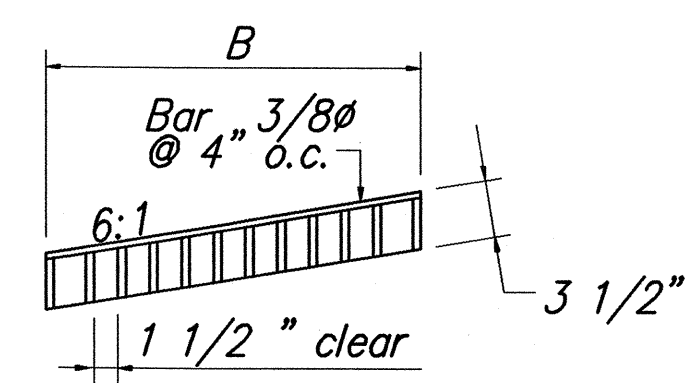
6/18/04	1 Signs added
DATE	REVISION
<p>STATE OF HAWAII DEPARTMENT OF TRANSPORTATION HIGHWAYS DIVISION</p> <p><u>SIGNAGE AND PAVEMENT</u> <u>MARKING PLAN - 7</u></p> <p><u>HAWAII BELT ROAD RESURFACING</u> <u>East Paauilo Bridge to Kaala Bridge</u> <u>Federal Aid-Project No. NH-019-2(55)</u></p> <p>Scale: As Noted Date: April 2004</p> <p>SHEET No. C-25 OF 49 SHEETS</p>	



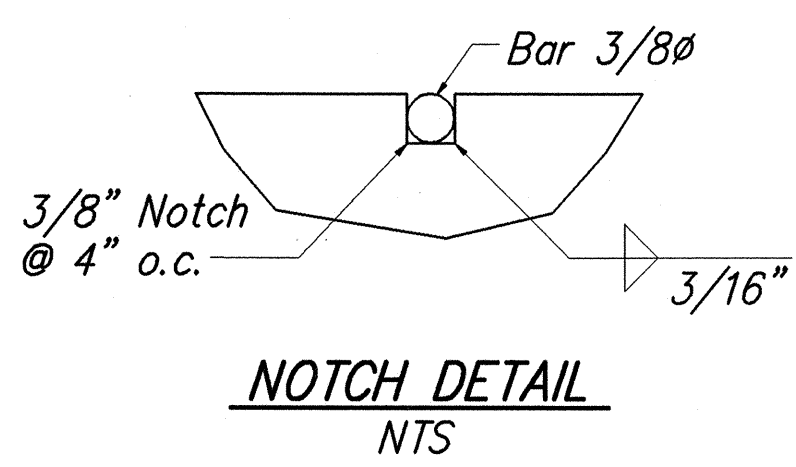
GENERAL NOTES

1. Steel frame details for grates shall be the steel frames shown on Standard Plan H-13.
2. Grates shall be hot dip galvanized after fabrication.
3. Use in locations off the road bed on all types of highways. (Pedestrian safe)
4. Cross slope of grate at Sta. 79+78 shall be 2%. See Std. Plan H-13 for frame details.

PLAN



SECTION



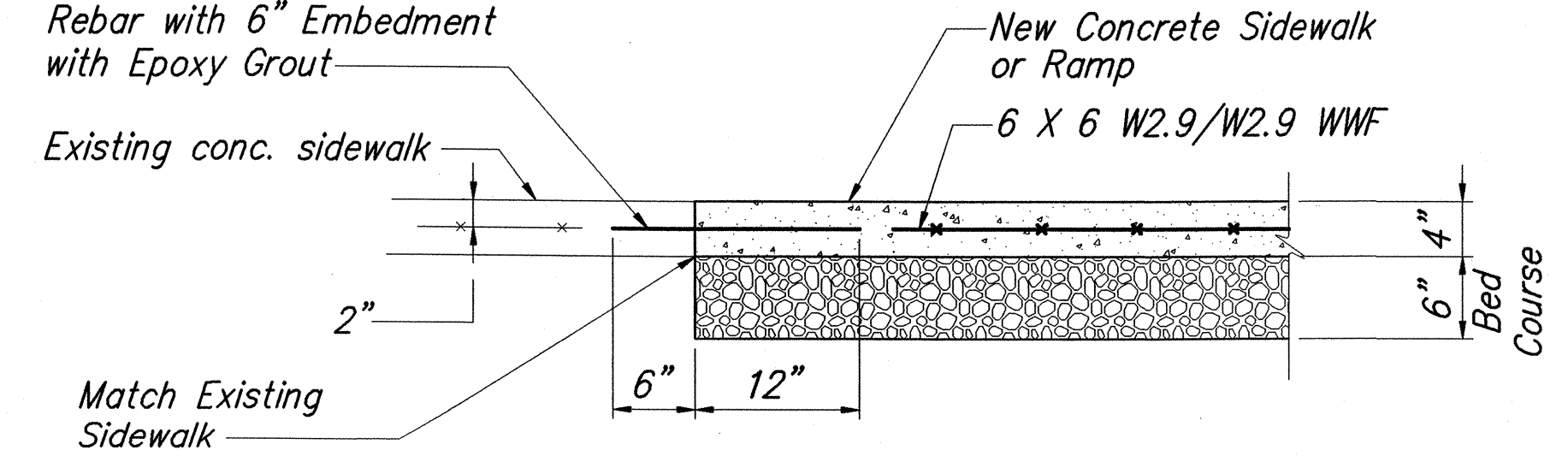
NOTCH DETAIL
NTS

DIMENSIONS					
TYPE	NO. BARS	A	B	C	D
61614P	12		1'-11 1/2"	2"	

TYPE 61614P STEEL GRATE

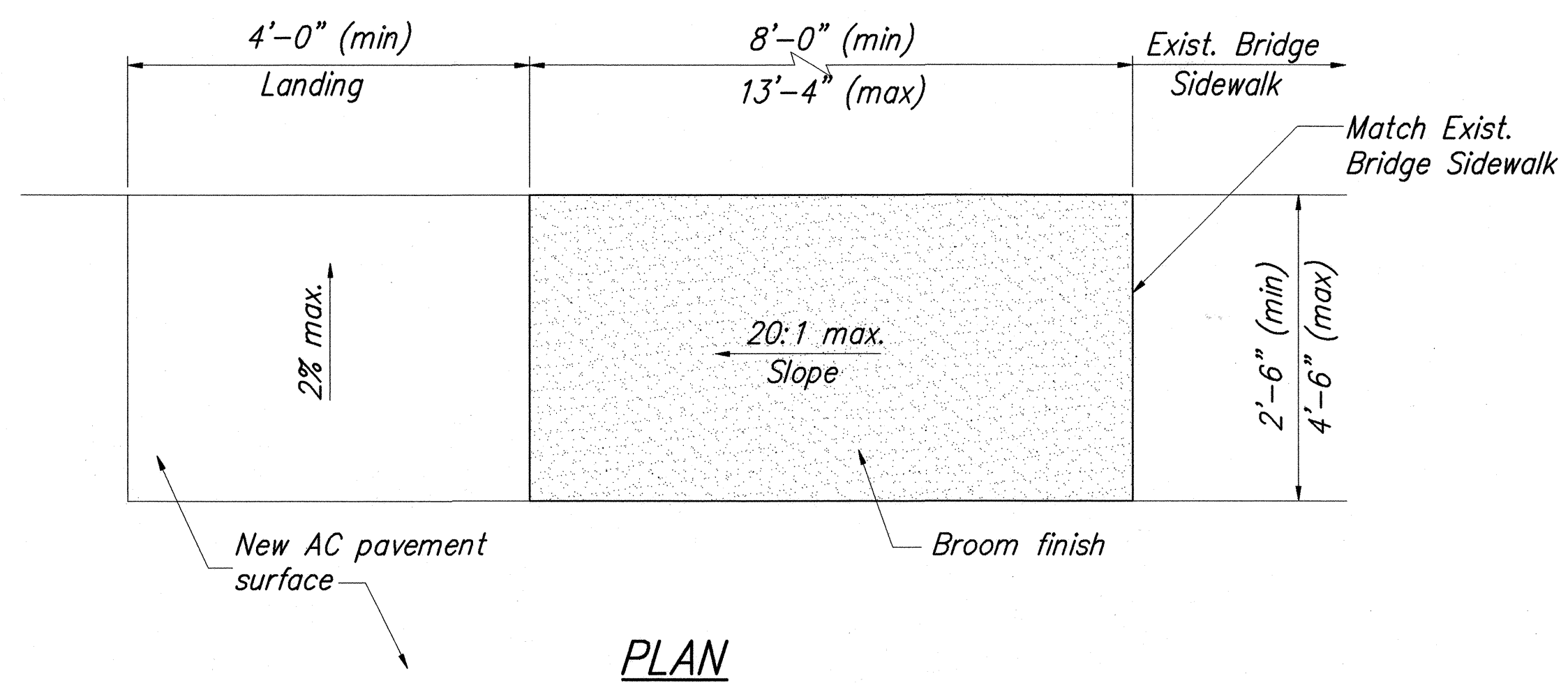
Scale: 1 1/2" = 1'-0"

Drill 5/8"Ø at 12" o.c. for No. 4 x 1'-6" Deformed Rebar with 6" Embedment with Epoxy Grout

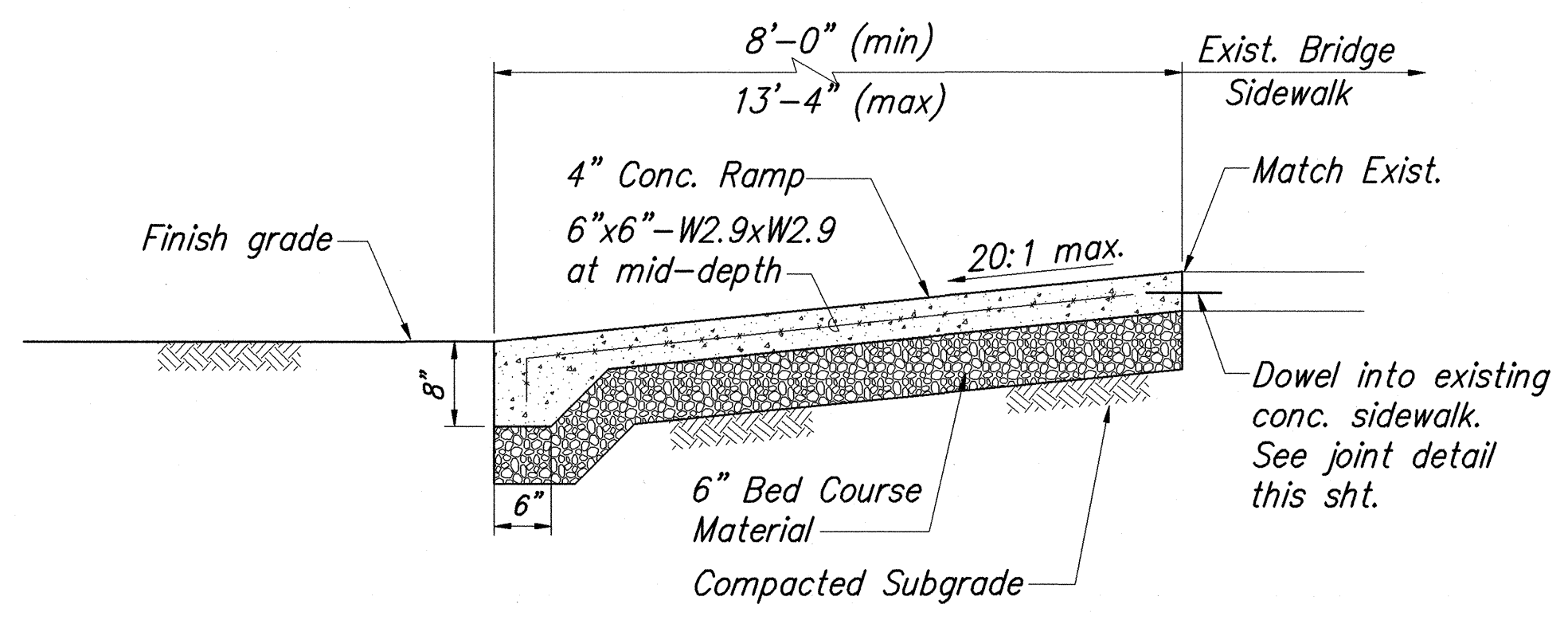


TYPICAL CONSTRUCTION JOINT AT EXISTING SIDEWALK

Not to scale



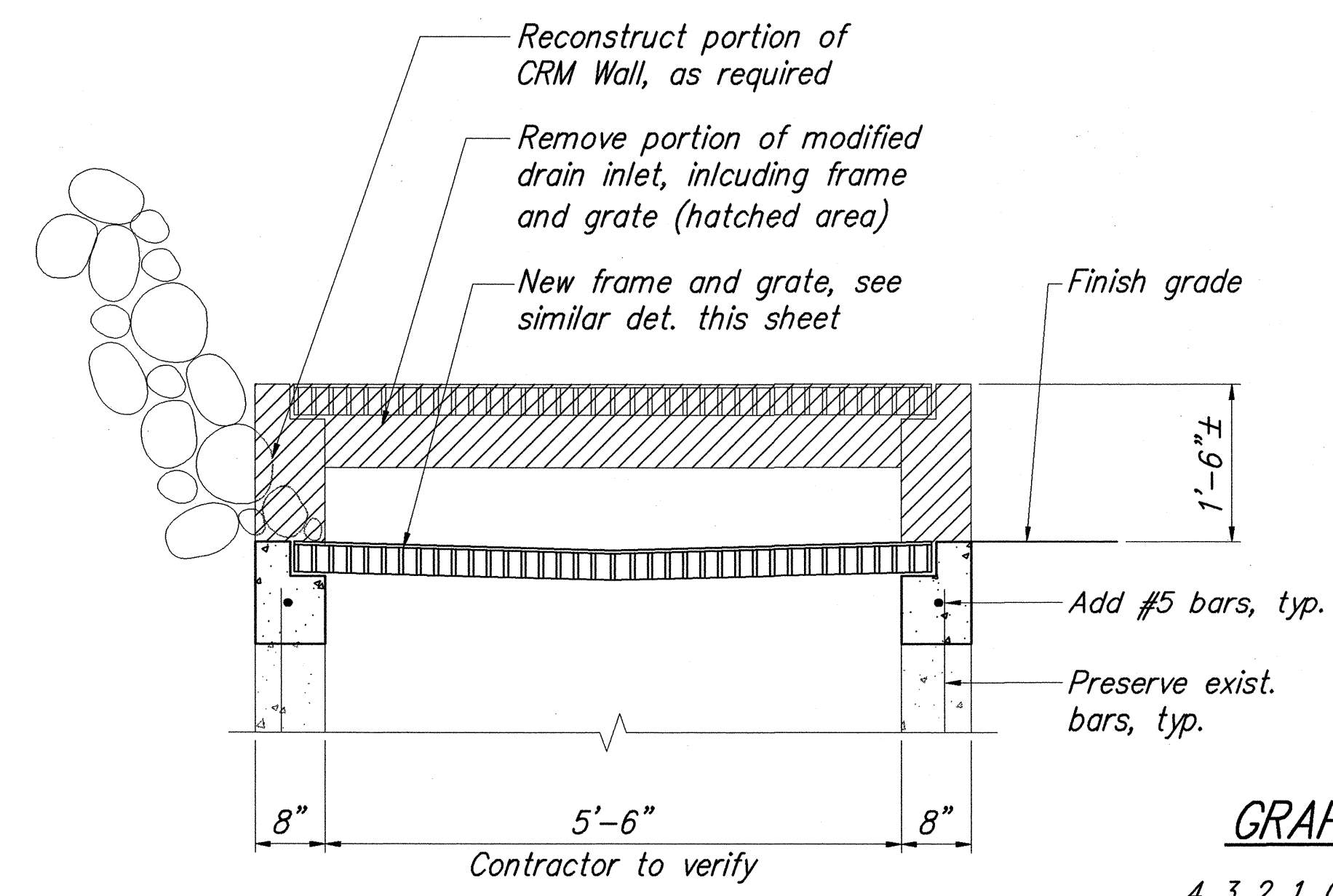
PLAN



SECTION

ACCESSIBLE RAMP DETAIL (MODIFIED TYPE "D")

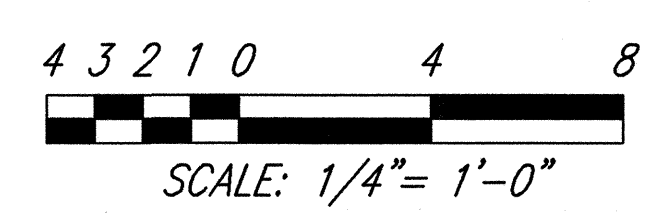
Scale: 3/4" = 1'-0"



DRAIN INLET RECONSTRUCTION

Scale: 3/4" = 1'-0"

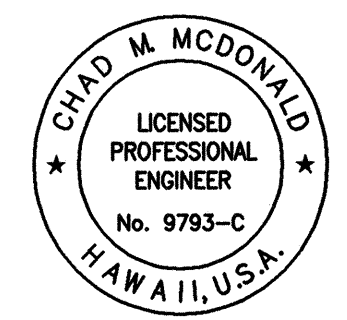
GRAPHIC SCALE:



ACCESSIBILITY NOTES:

1. A 2% maximum cross slope shall be maintained in the direction of pedestrian traffic.
2. The maximum slopes of adjoining road surface immediately fronting the ramp shall not exceed 8.33%. The counterslope may be exceeded when the change of grade does not exceed 13% (11% preferred) over a distance of 2ft. Exceeding the 13% (11% preferred) change in grade will cause a person in a wheelchair to tip forward and/or fall backward.
3. Transitions from ramps to roadways shall be flush.
4. Ramps and sidewalks shall be constructed to eliminate ponding to the maximum extent feasible.
5. Construction joints are required to join ramps with sidewalks.
6. Surfaces of sidewalks and ramps shall be broom finish, firm, stable, and slip-resistant. This includes the surfaces of pullboxes, valve covers, manhole covers, etc.
7. Bed course material is required for ramps and sidewalks.

SURVEY PLOTTED BY	DATE
DRAWN BY	6/18/04
DESIGNED BY	
CHECKED BY	
ORIGINAL PLAN	
NOTE BOOK	
NO.	



THIS WORK WAS PREPARED BY ME OR UNDER MY SUPERVISION
Chad M. McDonald
MITSUNAGA & ASSOCIATES

6/18/04	1	Drain Inlet Detail added
DATE		REVISION

STATE OF HAWAII
DEPARTMENT OF TRANSPORTATION
HIGHWAYS DIVISION

MISCELLANEOUS DETAILS

HAWAII BELT ROAD RESURFACING
East Paauilo Bridge to Kaala Bridge
Federal Aid-Project No. NH-019-2(55)

Scale: As Noted Date: April 2004

SHEET No. C-30 OF 49 SHEETS