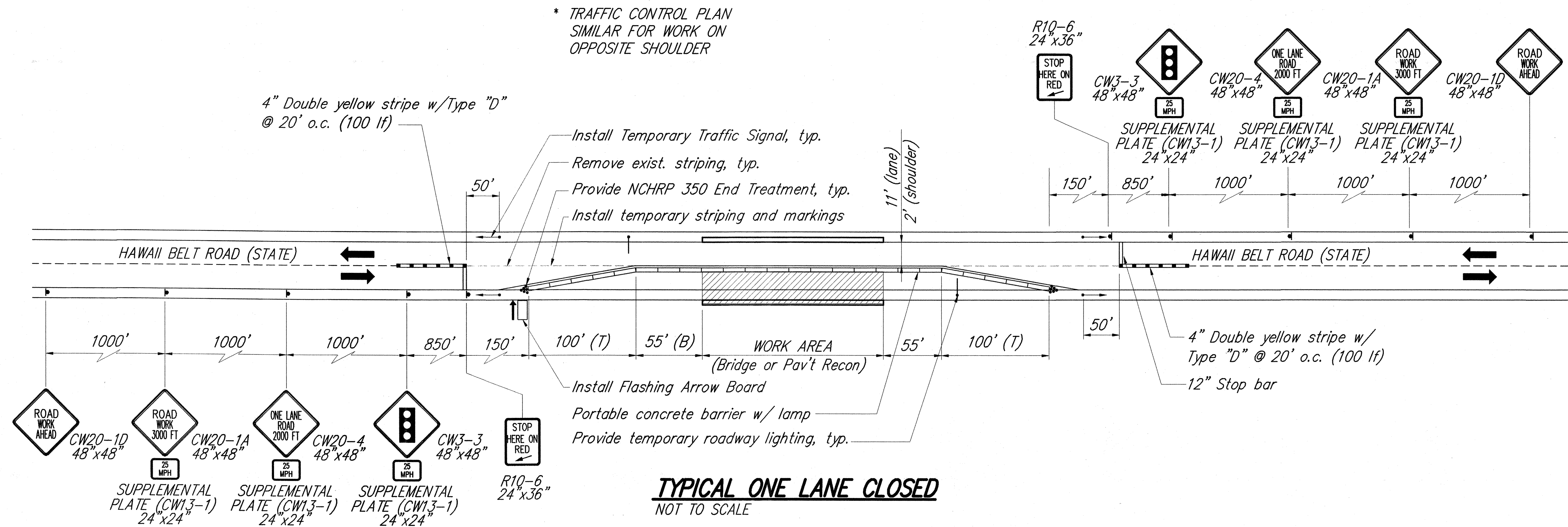


FED. ROAD DIST. NO.	STATE	FED. AID PROJ. NO.	FISCAL YEAR	SHEET NO.	TOTAL SHEETS
HAWAII	HAW.	NH-019-2(55)	2004	34	112

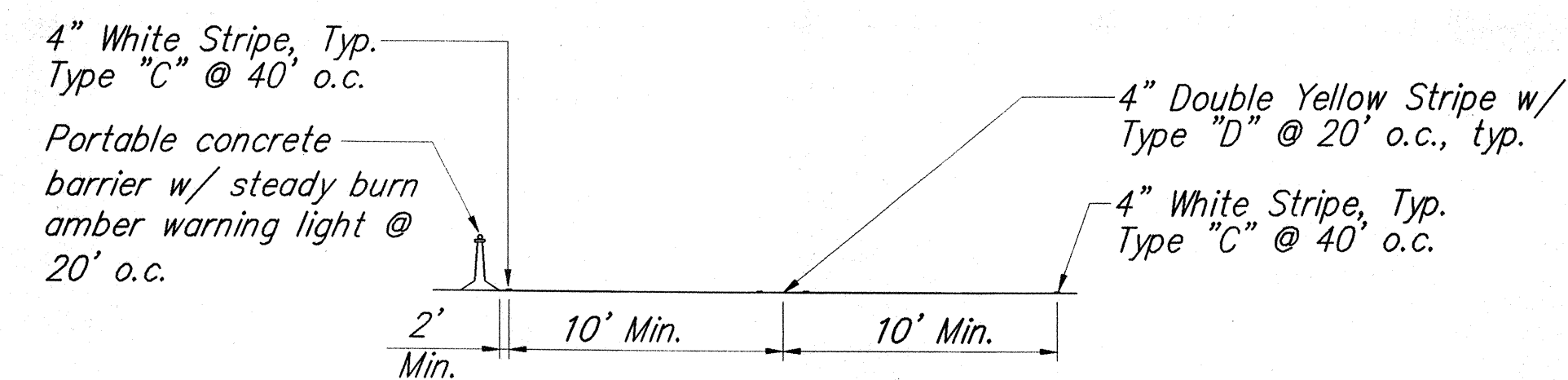
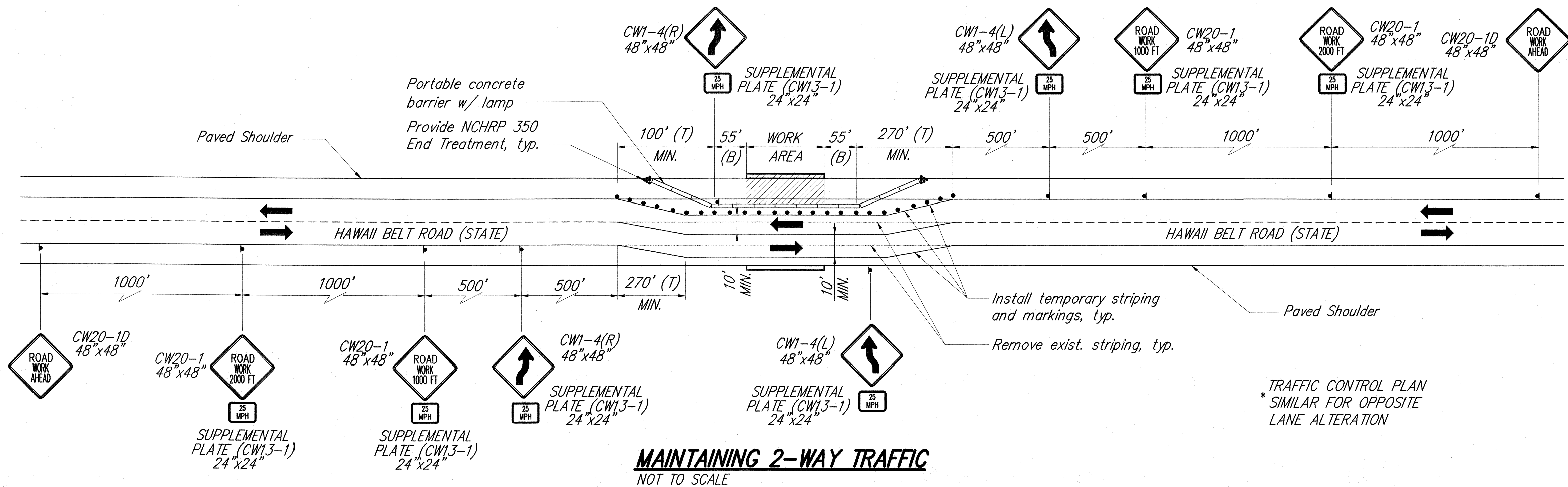


LEGEND

- TEMPORARY CONSTRUCTION SIGN
- CONE OR DELINEATOR
- DIRECTION OF TRAFFIC
- FLASHING ARROW BOARD
- PORTABLE CONCRETE BARRIER W/ LAMP
- TEMPORARY ROADWAY LIGHTING
- TEMPORARY TRAFFIC SIGNAL

Notes:

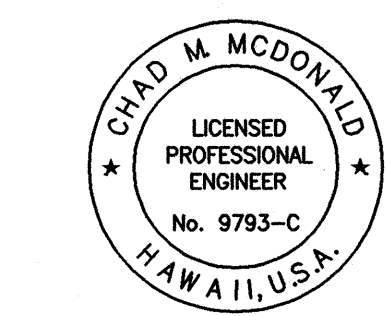
- See sheets C-33 and C-34 for additional "Work Zone" traffic control requirements.
- End Treatments for portable concrete barriers shall be considered incidental to Item No. 606.8000 - Portable Concrete Barrier.
- The Contractor will be allowed to close one lane a maximum 500 feet at any one time for the purpose of pavement reconstruction.
- The Engineer will consider the cost for removal and installation of portable concrete barriers, traffic control signs, etc. for construction phasing as included in the price of the various contract items, and will not be paid for separately.



TYPICAL TEMPORARY STRIPING - SECTION
Not to Scale

SURVEY PLOTTED BY	DATE
DRAWN BY	
DESIGNED BY	
QUANTITIES BY	
CHECKED BY	

ORIGINAL PLAN	NO.
NOTE BOOK	
QUANTITIES BY	
CHECKED BY	



THIS WORK WAS PREPARED BY ME OR
UNDER MY SUPERVISION
Chad M. McDonald
MITSUNAGA & ASSOCIATES

STATE OF HAWAII
DEPARTMENT OF TRANSPORTATION
HIGHWAYS DIVISION

CONSTRUCTION PHASING PLAN

HAWAII BELT ROAD RESURFACING
East Paauilo Bridge to Kaala Bridge
Federal Aid-Project No. NH-019-2(55)

Scale: As Noted Date: April 2004

SHEET No. C-32 OF 49 SHEETS