

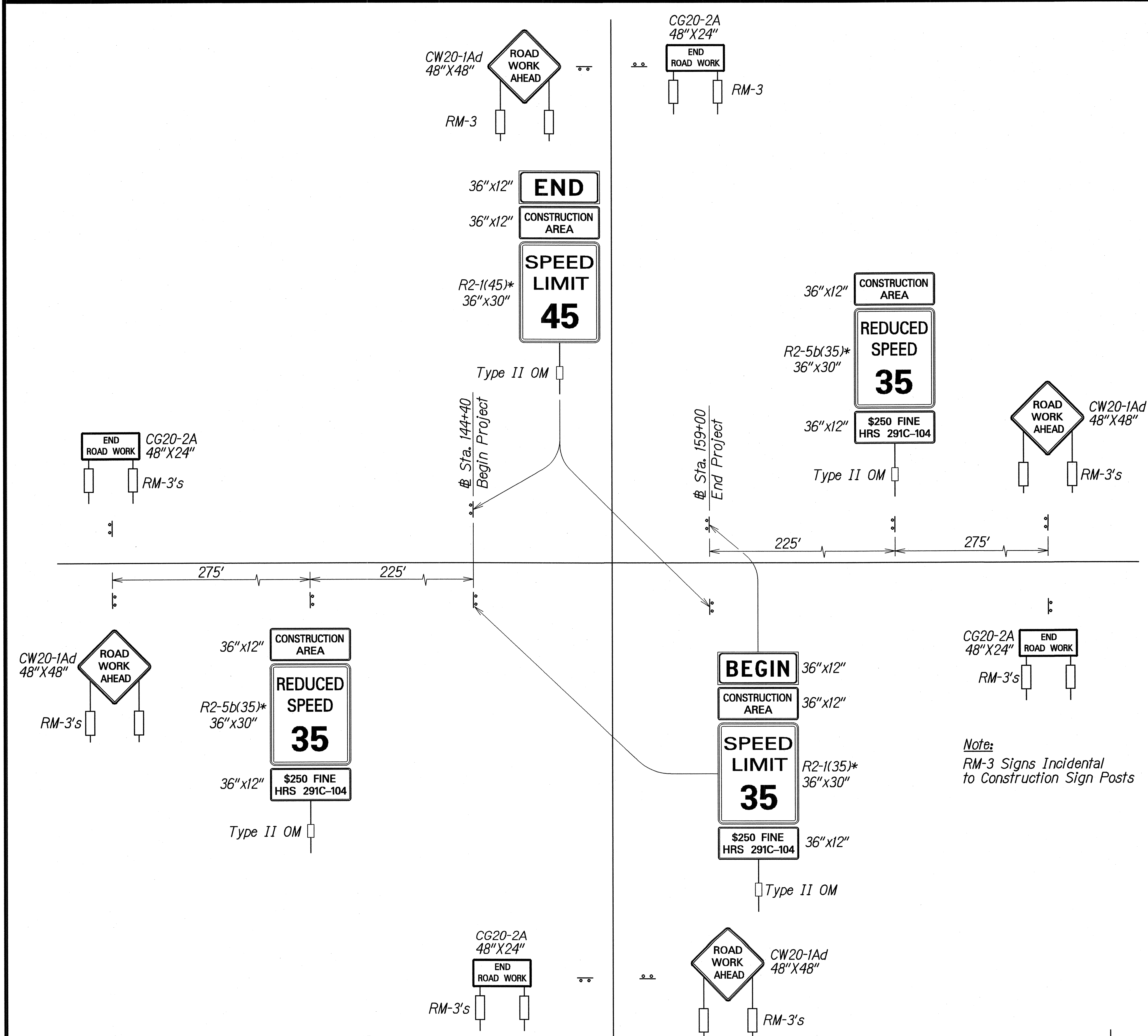
FED. ROAD DIST. NO.	STATE	PROJ. NO.	FISCAL YEAR	SHEET NO.	TOTAL SHEETS
HAWAII	HAW.	19J-01-02	2004	ADD.34	40

Construction Sign Schedule		
Sta/Offset	Sign W/Post	Amount
139+40 RT	CW20-1Ad	1
139+40 LT	CG20-2A	1
142+15 RT	R2-5b(35) assembly	1
144+40 RT	R2-1(35) assembly	1
144+40 LT	R2-1(45) assembly	1
159+00 RT	R2-1(45) assembly	1
159+00 LT	R2-1(35) assembly	1
161+25 LT	R2-5b(35) assembly	1
164+00 RT	CG20-2A	1
164+00 LT	CW20-1Ad	1
5+00 RT S/RD	CG20-2A	1
5+00 LT S/RD	CW20-1Ad	1
-5+00 RT S/RD	CW20-1Ad	1
-5+00 LT S/RD	CG20-2A	1
Total		14

Work Zone Note:

- All existing regulatory speed limit signs with posts within the work zone/project limits shall be removed and replaced with work zone speed limit sign assemblies (R2-1(XX) and R2-5b(XX) with "CONSTRUCTION AREA", "\$250 FINE HRS 291C-104", "BEGIN" and "END" Supplemental Signs).
- Each construction warning sign shall have a minimum of two (2) Type II OM. Each work zone speed limit assembly shall have a minimum of one (1) Type II OM. Installation of each Type II OM shall be considered incidental to Item No. 621.7100, Construction Sign with Posts.
- Upon the completion of all physical work or as directed by the Engineer, all construction signs and work zone speed limit assemblies shall be removed. All speed limit signs and posts that were existing at the start of the project within the work zone/project limits shall be restored back to their original locations and configurations.
- Placement of construction signs shall not obstruct the path of pedestrians and bicyclists.
- The removal and restoration of existing regulatory speed limit signs with new posts along with the installation, maintenance and removal of work zone speed limit sign assemblies shall be considered incidental to Item No. 621.7100, Construction Sign with Posts.

Note:
RM-3 Signs Incidental
to Construction Sign Posts



TYPICAL DIAGRAM FOR
CONSTRUCTION SIGN LAYOUT
Not To Scale

*Supplemental "CONSTRUCTION AREA", "\$250 FINE HRS 291C-104", "BEGIN" and "END" signs shall not be measured and paid for separately and shall be considered incidental to the R2-1(35), R2-1(45) and R2-5b(35) sign assemblies.

DESIGNED BY	DATE
DRAWN BY	
CHECKED BY	
NOTED BY	
QUANTITIES BY	
DATE	

5/10/04	Revise Dimensions of Signs.
DATE	REVISION

STATE OF HAWAII
DEPARTMENT OF TRANSPORTATION
HIGHWAYS DIVISION

CONSTRUCTION SIGN PLAN

Hawaii Belt Road
Traffic Operational Improvements
At Kulaimano Road
Project No. 19J-01-02

Scale: As Shown Date: Feb. 2003

SHEET No. 75 OF 6 SHEETS