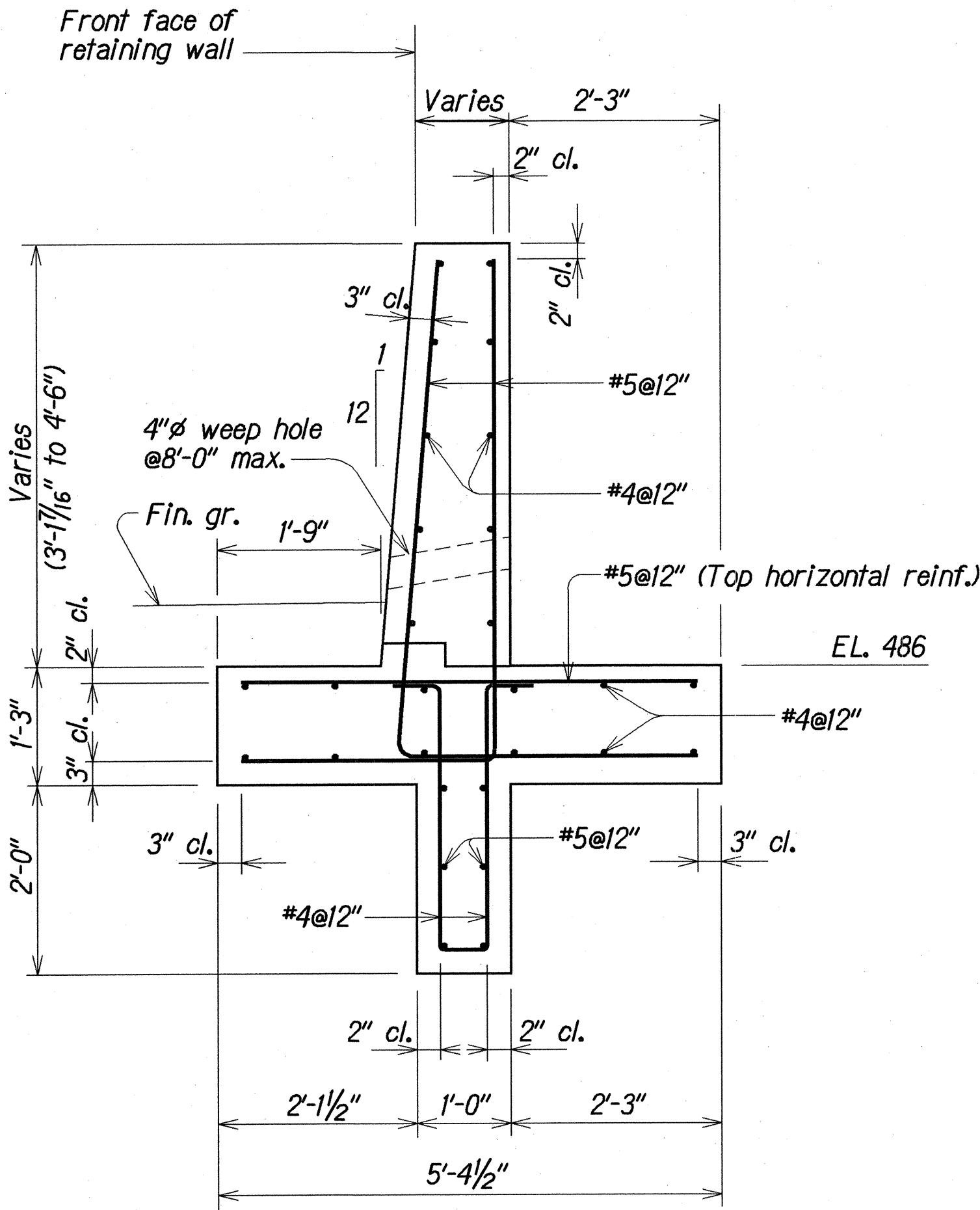
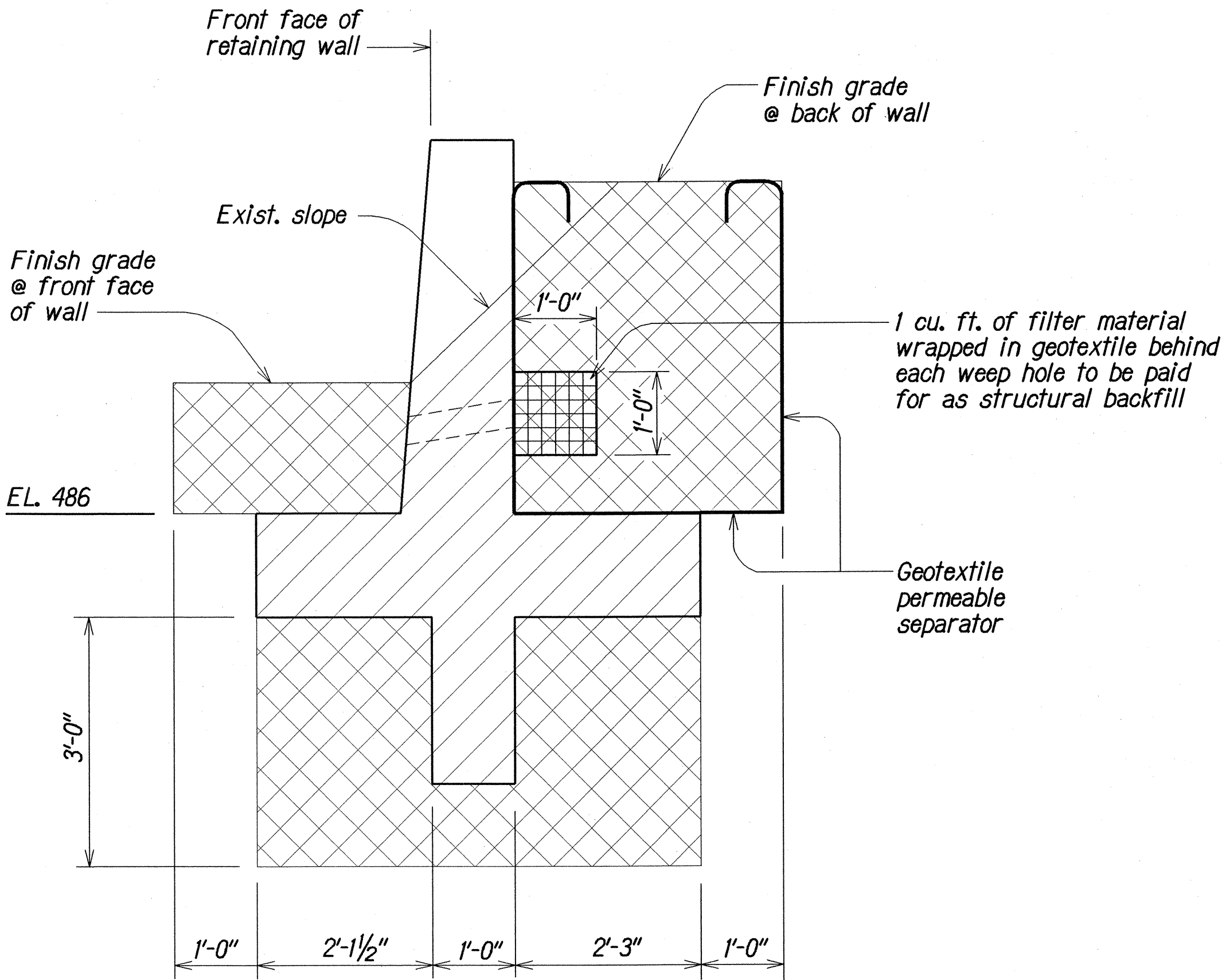


FED. ROAD DIST. NO.	STATE	PROJ. NO.	FISCAL YEAR	SHEET NO.	TOTAL SHEETS
HAWAII	HAW.	19J-01-02	2004	37	40

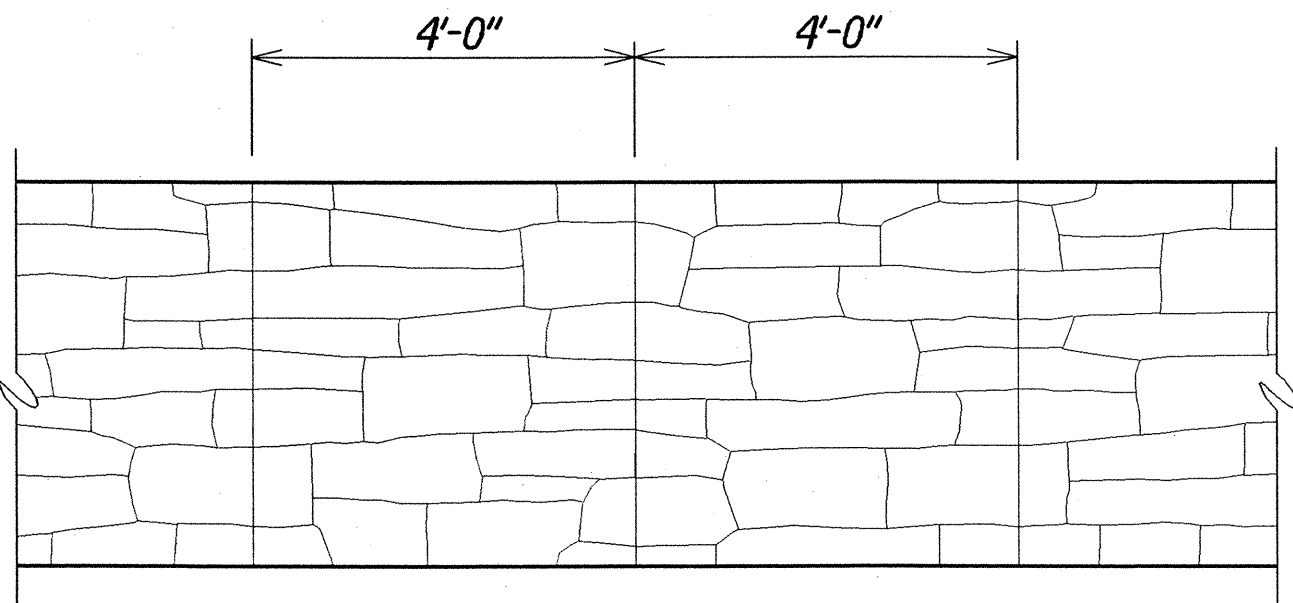
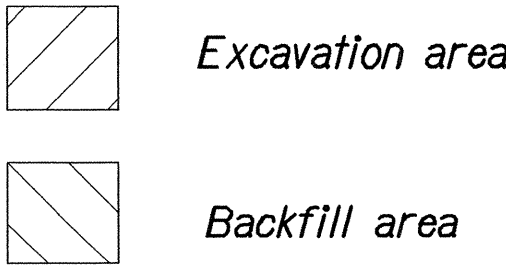
- NOTES:
1. Geotextile permeable separator to be incidental to backfill.
 2. Demolition and disposal of portion of exist. CRM wall to be incidental to new concrete wall.
 3. Front face of concrete wall to be formed with Fitzgerald Formliners Pattern 17911 - San Diego Drystack or equal as approved by the Engineer. Concrete of stem portion of wall to be colored by the addition of Integral colorant: Davis Colors, Taupe or equal as approved by the Engineer.
 4. Top horizontal reinf. in footing to be flared @ curve. Min. spacing to be held @ toe and lesser spacing @ heel.



TYPICAL SECTION
Scale: 3/4" = 1'-0"



TYPICAL EXCAVATION AND BACKFILL
Scale: 3/4" = 1'-0"



TYPICAL ELEVATION
(FITZGERALD FORMLINERS
PATTERN 17911)
Not to scale

ORIGINAL PLAN	SURVEY PLOTTED BY	DATE
NOTE BOOK	DRAWN BY	Oct 2003
QUANTITIES BY	DESIGNED BY	Oct 2003
CHECKED BY	DESIGNED BY	Oct 2003
	DESIGNED BY	Oct 2003

STATE OF HAWAII
DEPARTMENT OF TRANSPORTATION
HIGHWAYS DIVISION
CONCRETE WALL
TYPICAL SECTION AND ELEVATION,
TYPICAL EXCAVATION AND BACKFILL
Hawaii Belt Road
At Kulaimano Road
Project No. 19J-01-02

Scale: As Noted
Date: Oct, 2003