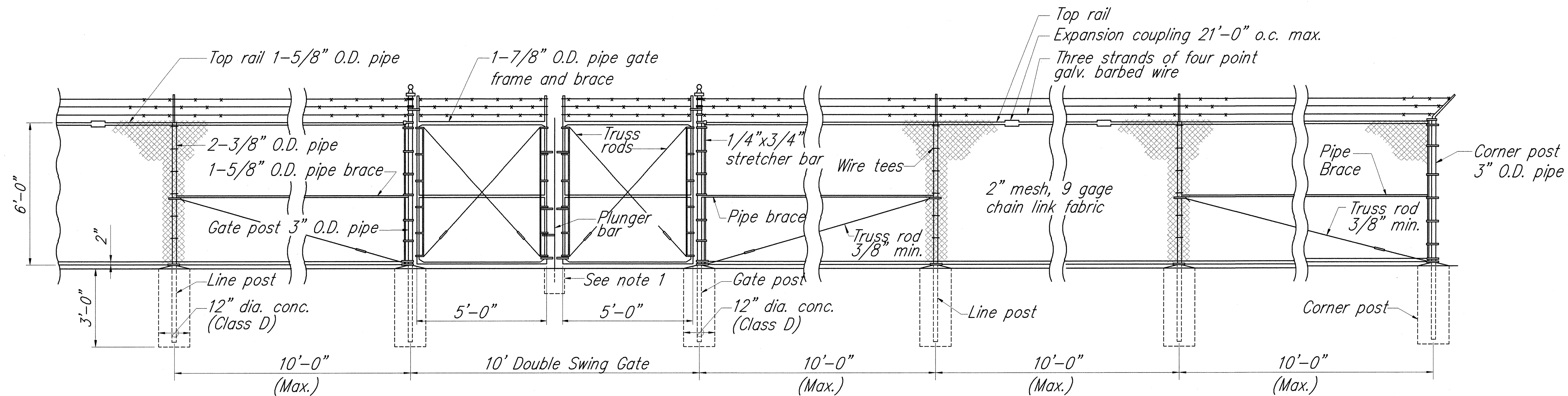


FED. ROAD DIST. NO.	STATE	FED. AID PROJ. NO.	FISCAL YEAR	SHEET NO.	TOTAL SHEETS
HAWAII	HAW.	NH-019-1(33)	2003	66	74

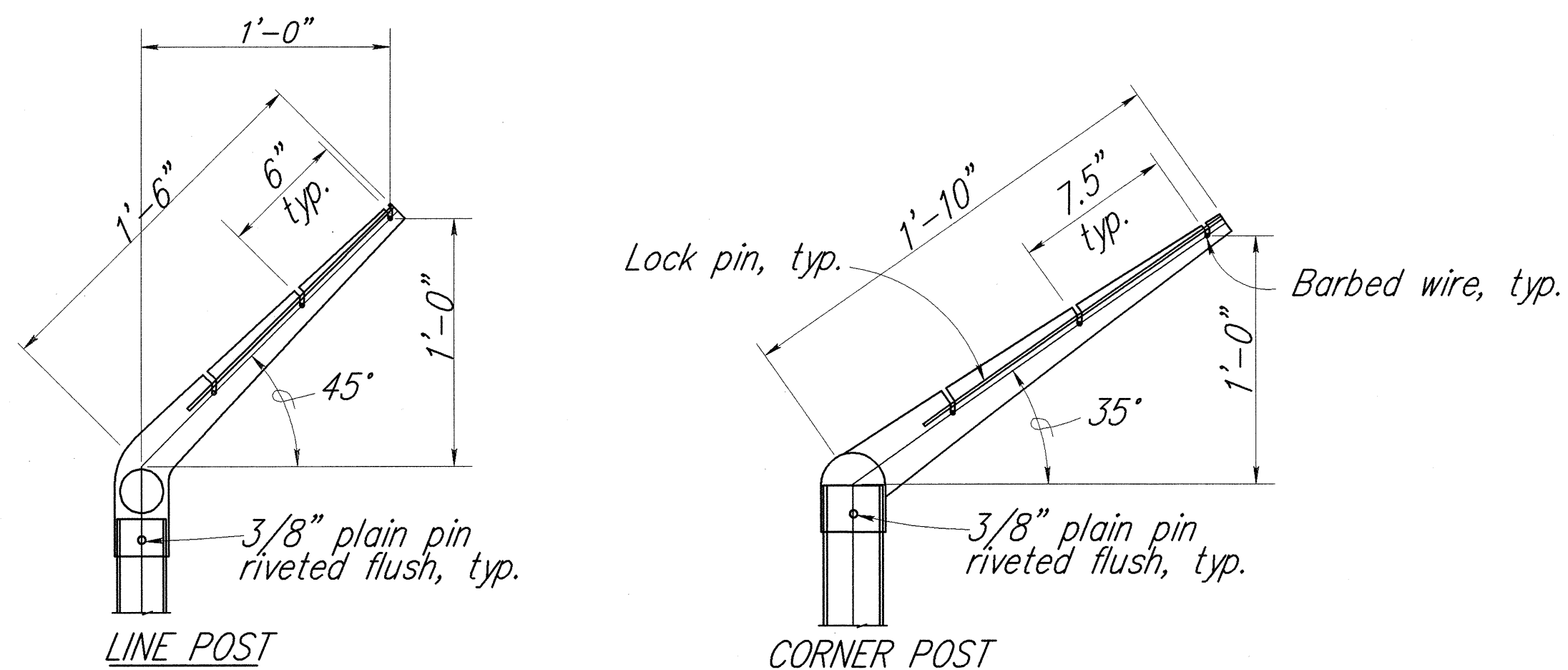


NOTES:

1. Embed 1" diameter pipe sleeve in 6"x6"x12" conc. anchor (Class D).
2. Gate shall be provided with tubular plunger bar, 1 lock keeper, 1 lock keeper guide, 2 latch forks, 2 fork catches, 1 catch for plunger bar, and 2 gate stops located as directed by the Engineer.

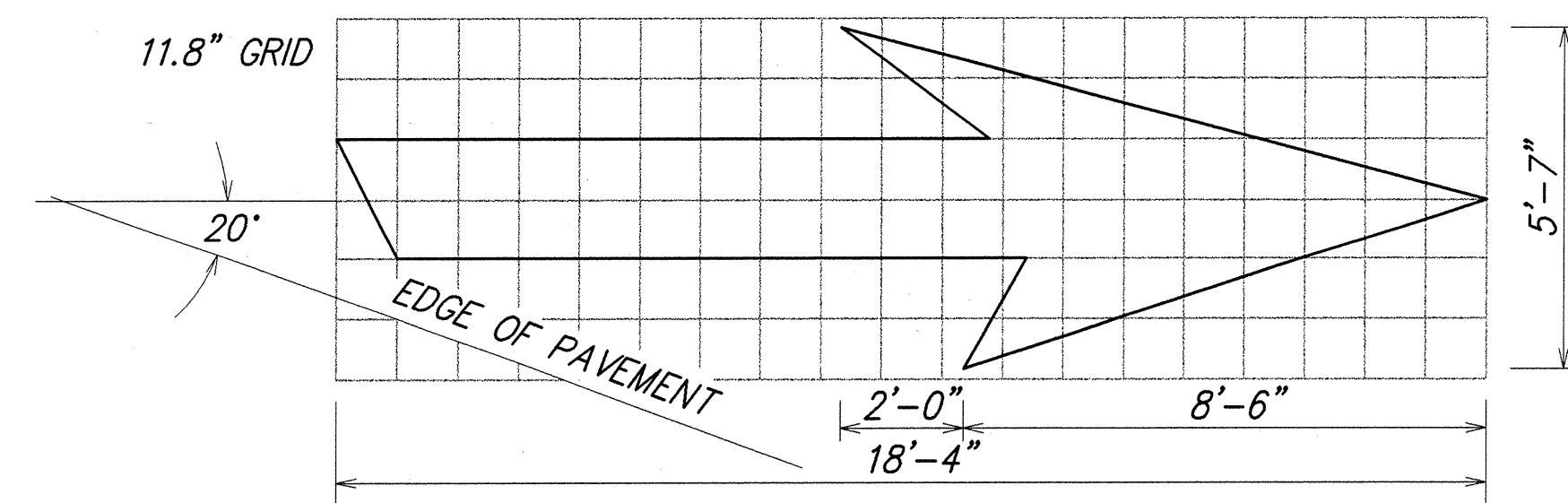
CHAIN LINK FENCE WITH BARBED WIRE

Not to scale



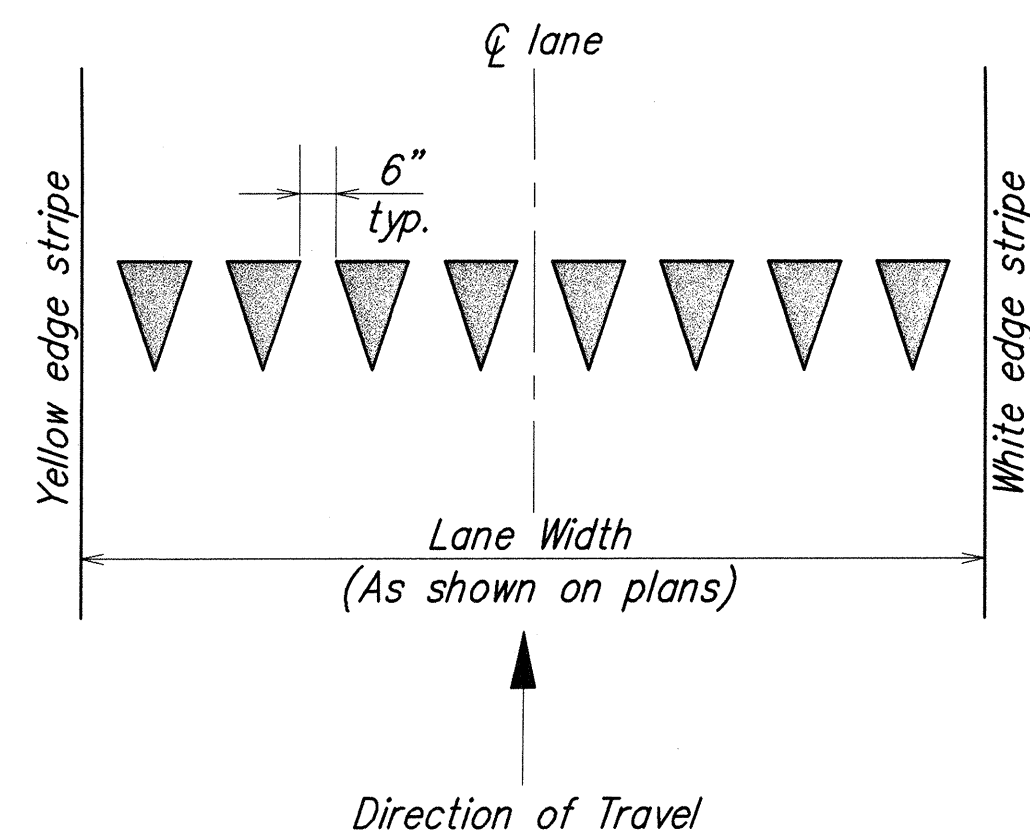
EXTENSION ARM DETAILS

N.T.S.



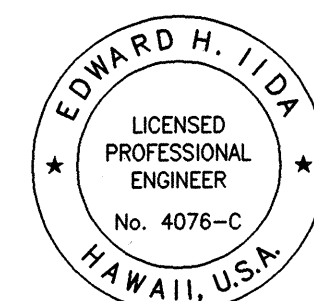
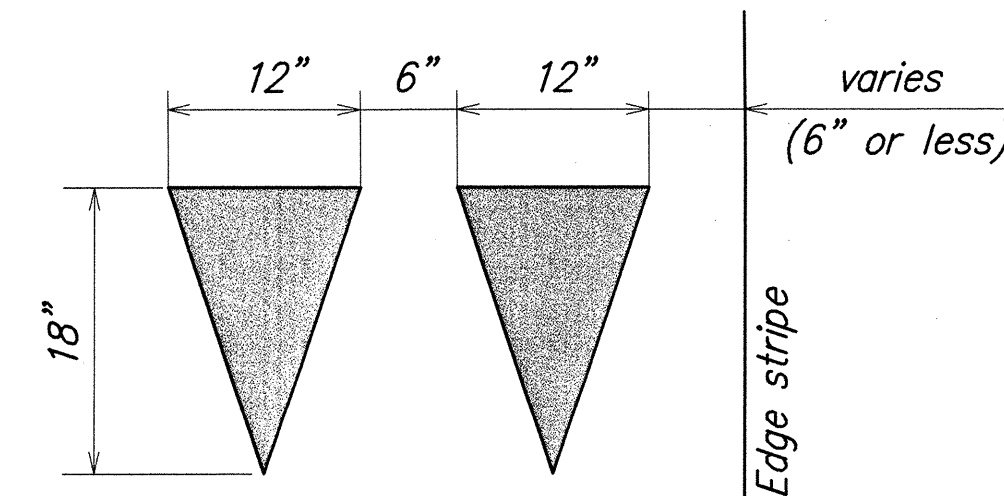
TYPE VI ARROW

RIGHT LANE DROP (MERGE) ARROW
(FOR LEFT LANE,
USE MIRROR IMAGE)



YIELD LINE DETAIL

NOT TO SCALE



STATE OF HAWAII
DEPARTMENT OF TRANSPORTATION
HIGHWAYS DIVISION

MISCELLANEOUS DETAILS

*Queen Kaahumanu Highway Resurfacing
Kekaha Kai State Park to Hapuna
Federal-Aid Project No. NH-019-1(33)*

Scale: As Noted Date: March 2003

SHEET No. C-64 OF 68 SHEETS

THIS WORK WAS PREPARED BY ME OR
UNDER MY SUPERVISION
Edward H. Iida
MITSUNAGA & ASSOCIATES