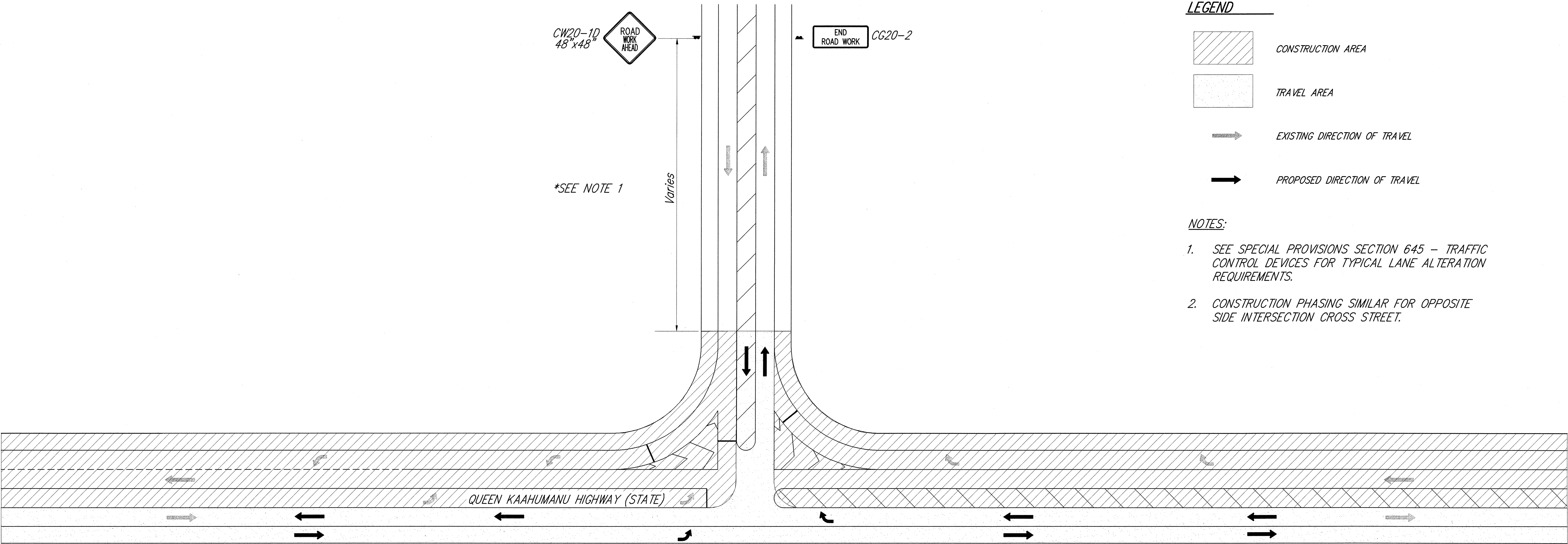
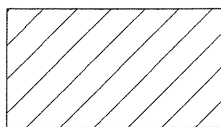


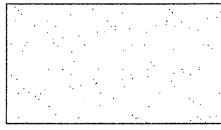
FED. ROAD DIST. NO.	STATE	FED. AID PROJ. NO.	FISCAL YEAR	SHEET NO.	TOTAL SHEETS
HAWAII	HAW.	NH-019-1(33)	2003	67	74



LEGEND



CONSTRUCTION AREA



TRAVEL AREA



EXISTING DIRECTION OF TRAVEL



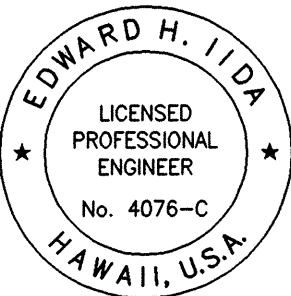
PROPOSED DIRECTION OF TRAVEL

NOTES:

1. SEE SPECIAL PROVISIONS SECTION 645 - TRAFFIC CONTROL DEVICES FOR TYPICAL LANE ALTERATION REQUIREMENTS.
2. CONSTRUCTION PHASING SIMILAR FOR OPPOSITE SIDE INTERSECTION CROSS STREET.

INTERSECTION PHASING PLAN - 1
NOT TO SCALE

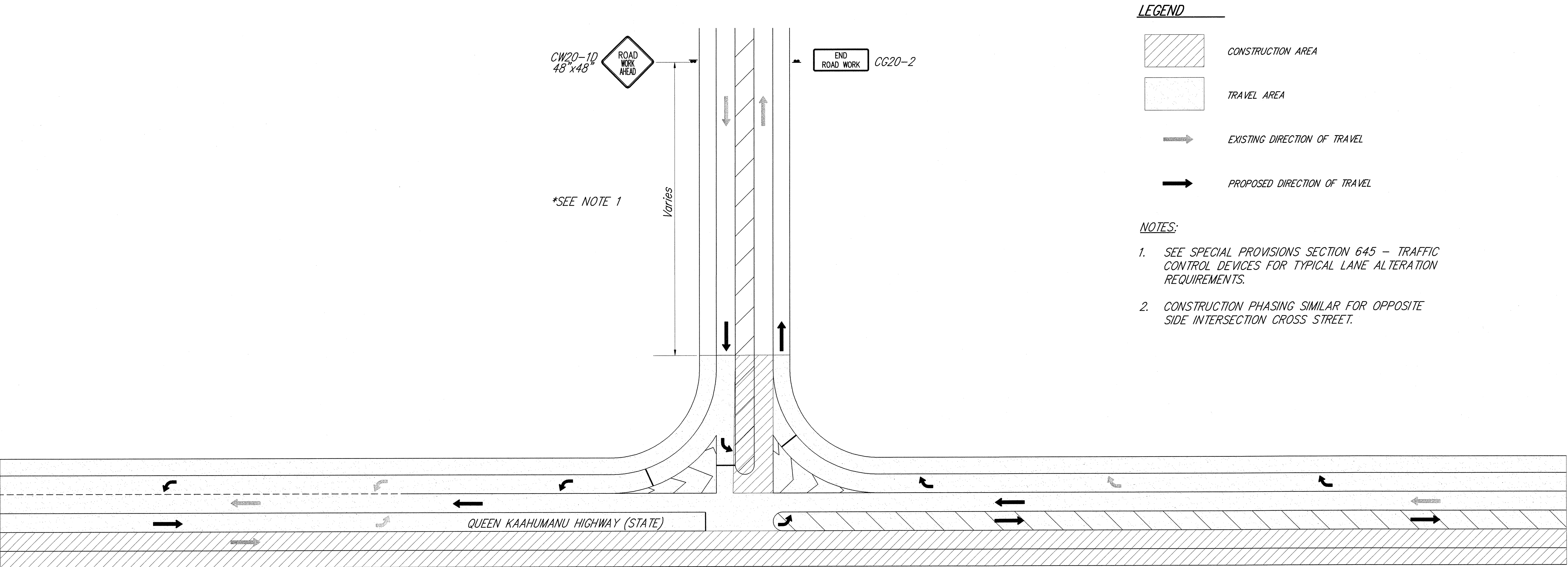
ORIGINAL PLAN	SURVEY PLOTTED BY	DATE
NOTE BOOK	DRAWN BY	3/03
No.	DESIGNED BY	3/03
	CHECKED BY	3/03



THIS WORK WAS PREPARED BY ME OR UNDER MY SUPERVISION
Edward H. Iida
MITSUNAGA & ASSOCIATES

STATE OF HAWAII
DEPARTMENT OF TRANSPORTATION
HIGHWAYS DIVISION
INTERSECTION PHASING PLAN - 1
*Queen Kaahumanu Highway Resurfacing
Kekaha Kai State Park to Hapuna
Federal-Aid Project No. NH-019-1(33)*
Scale: As Noted Date: March 2003
SHEET No. C-65 OF 68 SHEETS

FED. ROAD DIST. NO.	STATE	FED. AID PROJ. NO.	FISCAL YEAR	SHEET NO.	TOTAL SHEETS
HAWAII	HAW.	NH-019-1(33)	2003	68	74



LEGEND

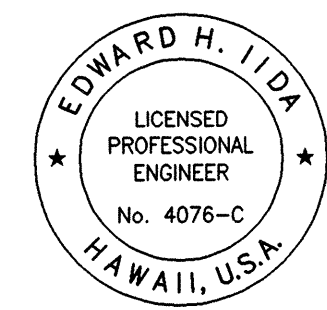
- CONSTRUCTION AREA
- TRAVEL AREA
- EXISTING DIRECTION OF TRAVEL
- PROPOSED DIRECTION OF TRAVEL

NOTES:

- SEE SPECIAL PROVISIONS SECTION 645 - TRAFFIC CONTROL DEVICES FOR TYPICAL LANE ALTERATION REQUIREMENTS.
- CONSTRUCTION PHASING SIMILAR FOR OPPOSITE SIDE INTERSECTION CROSS STREET.

INTERSECTION PHASING PLAN - 2
NOT TO SCALE

ORIGINAL PLAN	SURVEY PLOTTED BY	DATE
NOTE BOOK	DRAWN BY	3/03
No.	DESIGNED BY	3/03
	CHECKED BY	3/03



THIS WORK WAS PREPARED BY ME OR UNDER MY SUPERVISION
MITSUNAGA & ASSOCIATES

STATE OF HAWAII
DEPARTMENT OF TRANSPORTATION
HIGHWAYS DIVISION

INTERSECTION PHASING PLAN - 2

*Queen Kaahumanu Highway Resurfacing
Kekaha Kai State Park to Hapuna
Federal-Aid Project No. NH-019-1(33)*

Scale: As Noted Date: March 2003

SHEET No. C-66 OF 68 SHEETS