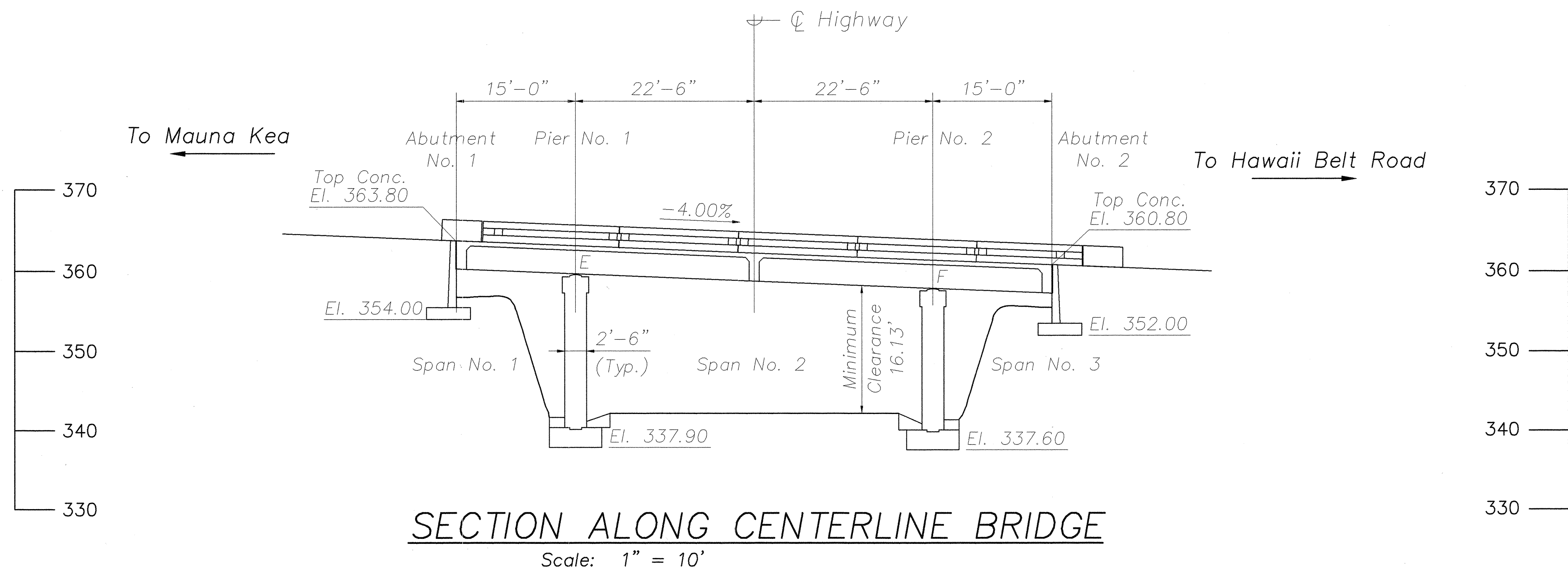
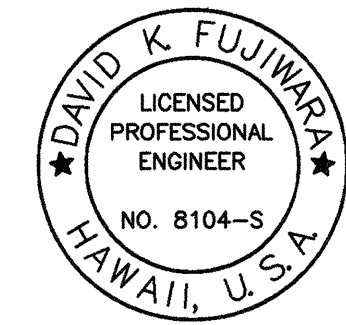
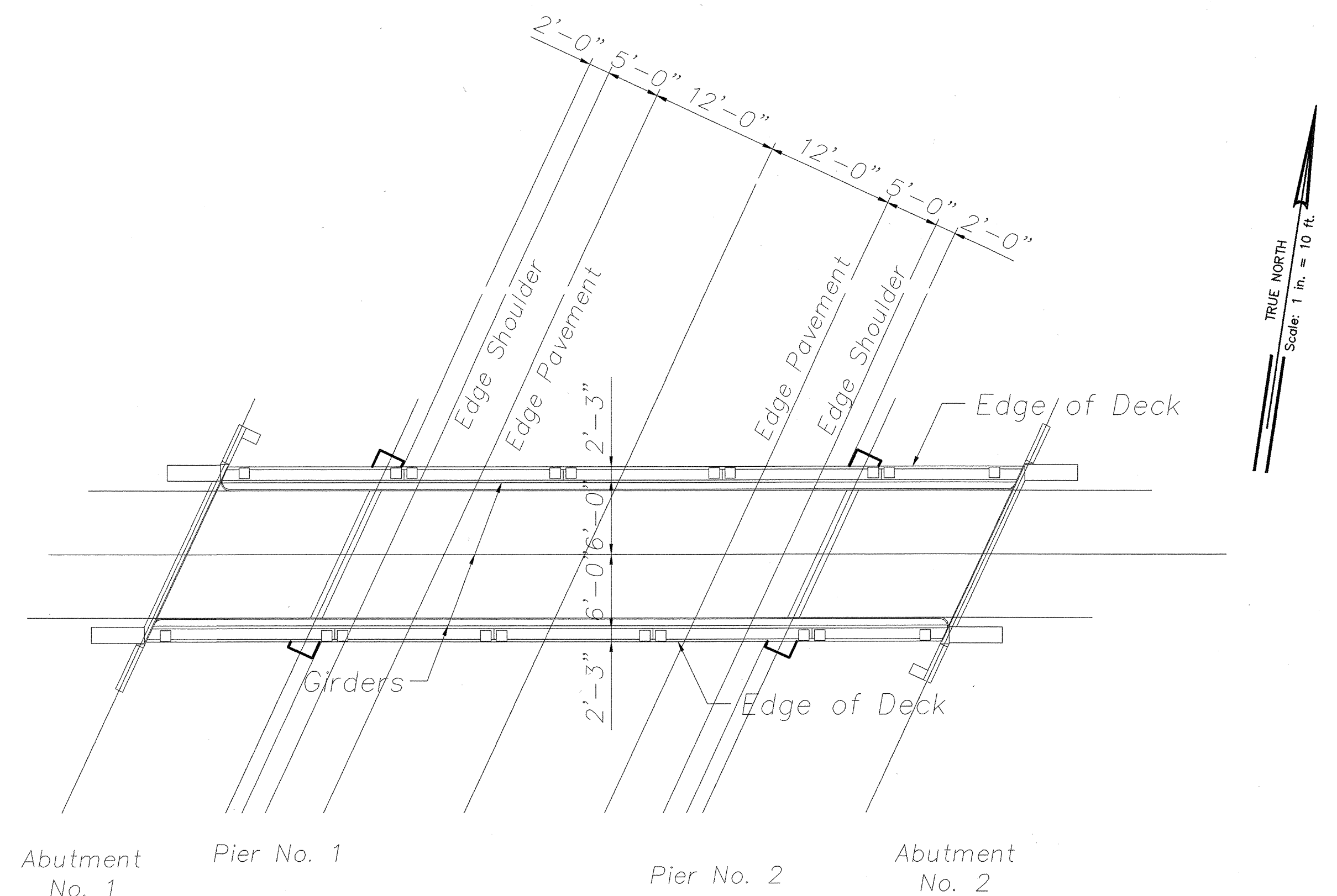
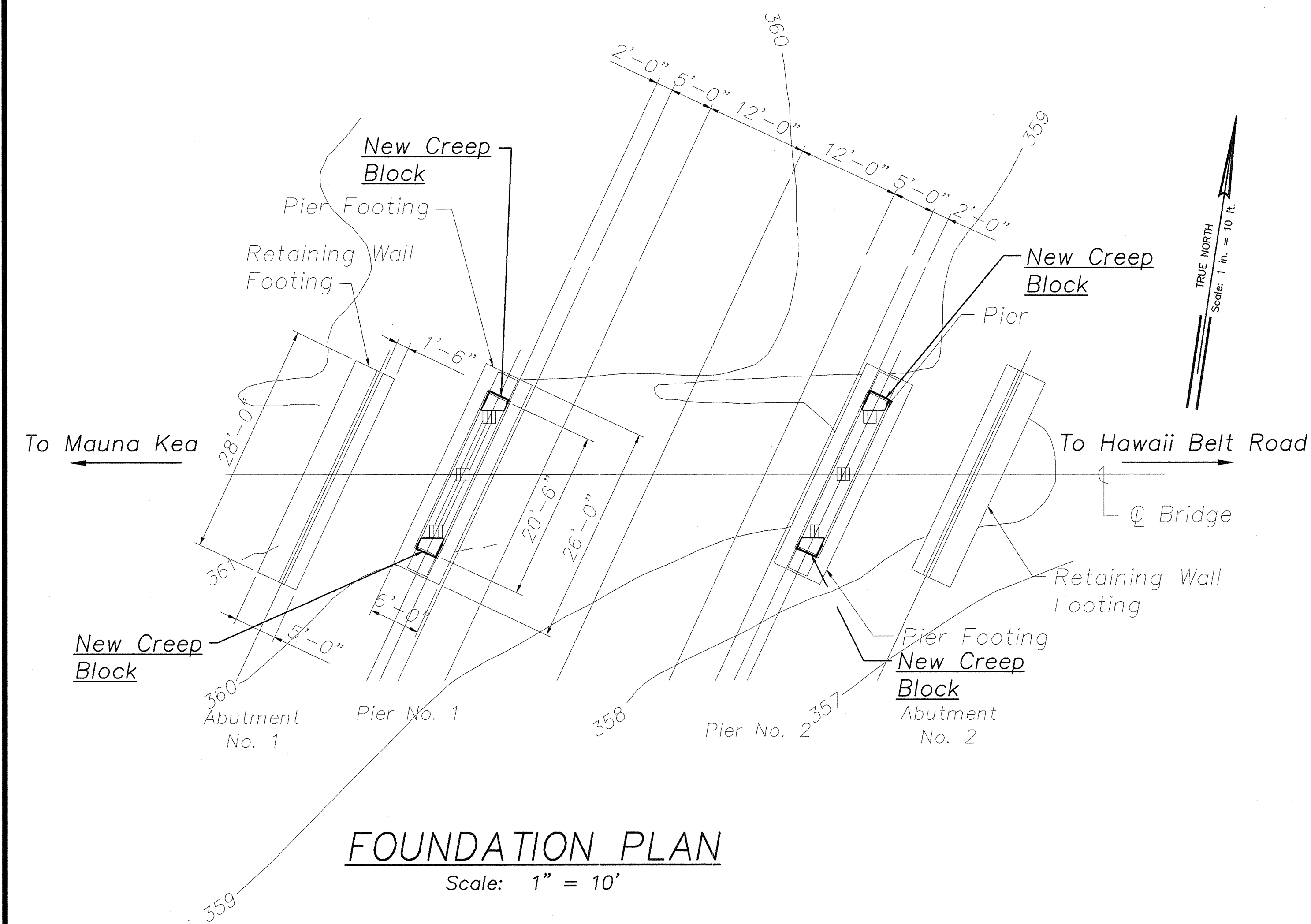


FED. ROAD DIST. NO.	STATE	FED. AID PROJ. NO.	FISCAL YEAR	SHEET NO.	TOTAL SHEETS
HAWAII	HAW.	BR-0100(57)	2001	67	88



LEGEND

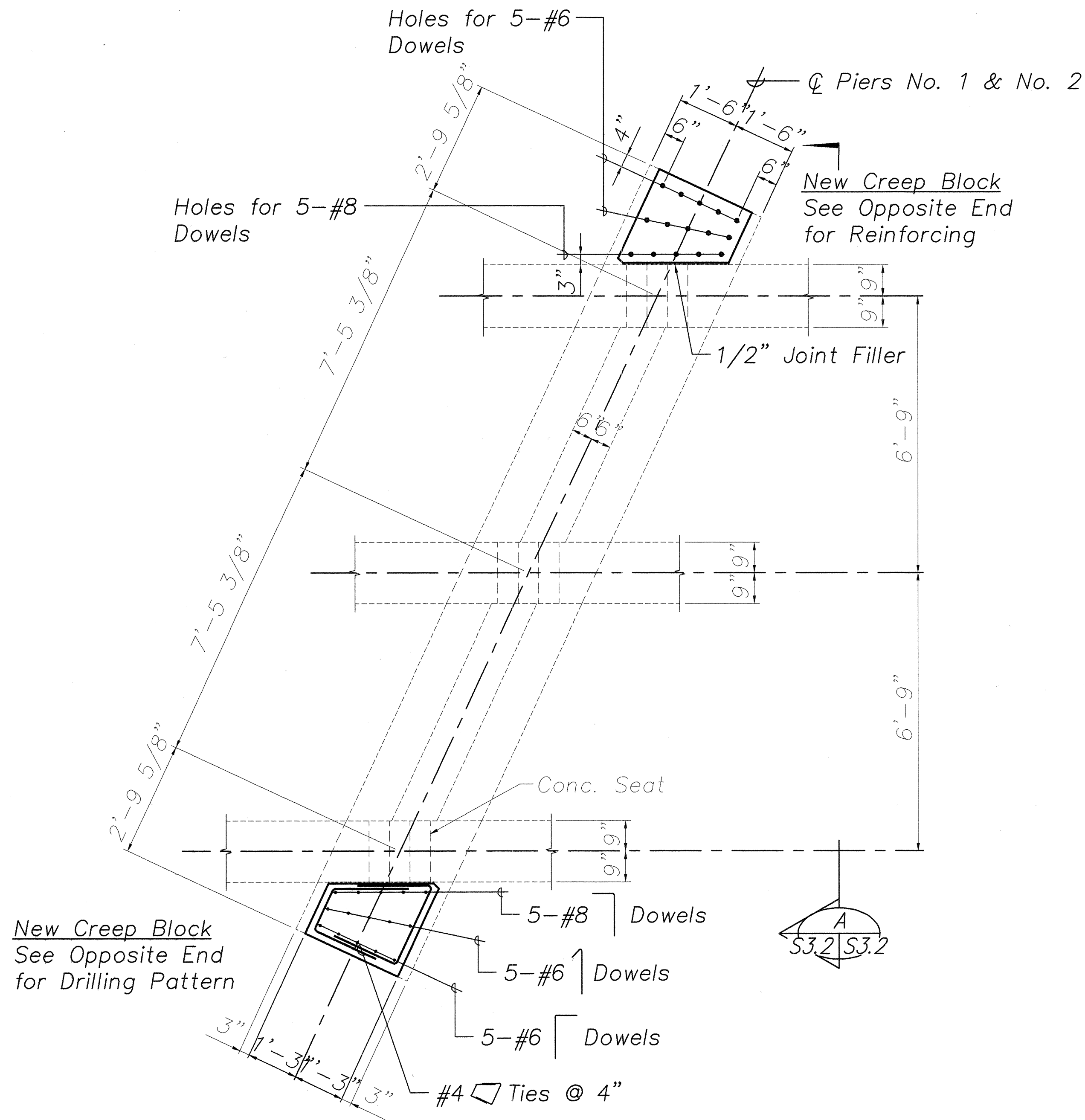
F Fixed End
E Expansion End



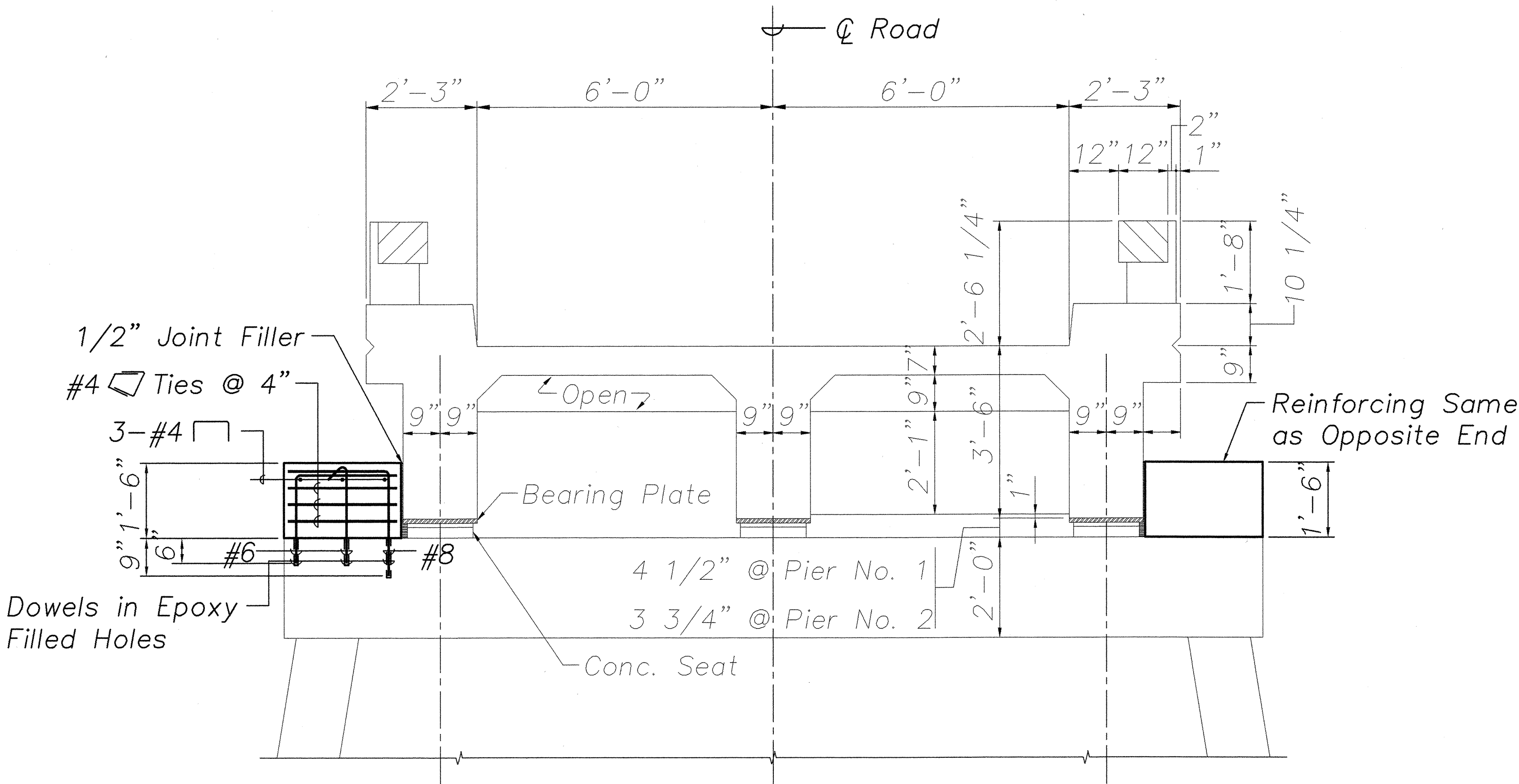
THIS WORK WAS PREPARED BY
ME OR UNDER MY SUPERVISION.

STATE OF HAWAII
DEPARTMENT OF TRANSPORTATION
HIGHWAYS DIVISION
**PEPEKEO PLANTATION ROAD OVERPASS
FOUNDATION AND LAYOUT PLANS
AND ELEVATION
HAWAII BELT ROAD
SEISMIC RETROFIT OF VARIOUS BRIDGES
VICINITY OF PEPEKEO, HAWAII - UNIT 1
FEDERAL-AID PROJECT NO. BR-0100(57)**
SCALE: AS NOTED DATE: March 2001

FED. ROAD DIST. NO.	STATE	FED. AID PROJ. NO.	FISCAL YEAR	SHEET NO.	TOTAL SHEETS
HAWAII	HAW.	BR-0100(57)	2001	68	88



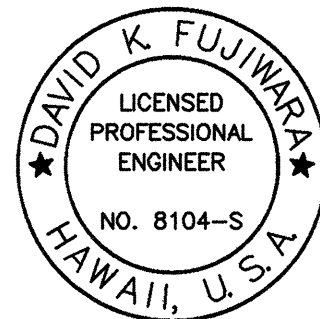
FRAMING PLAN @ PIERS NO. 1 & NO. 2
 Scale: 1/2" = 1'-0"



SECTION A
 Scale: 1/2" = 1'-0"

SURVEY PLOTTED BY	DATE
DRAWN BY	
TRACED BY	
NOTED BY	
CHECKED BY	
ORIGINAL PLAN	
NOTE BOOK	
No.	

PEPEEKEO PLANTATION ROAD OVERPASS RETROFITS				
ITEM	LOCATION	QUANTITY		REFERENCE DRAWINGS
		PER LOC.	TOTAL	
Creep Block	Piers No. 1, 2	2	4	S3.1, S3.2



THIS WORK WAS PREPARED BY
 ME OR UNDER MY SUPERVISION.

STATE OF HAWAII
DEPARTMENT OF TRANSPORTATION
HIGHWAYS DIVISION
PEPEEKEO PLANTATION ROAD OVERPASS
PLAN AND SECTION
HAWAII BELT ROAD
SEISMIC RETROFIT OF VARIOUS BRIDGES
VICINITY OF PEPEEKEO, HAWAII - UNIT 1
FEDERAL-AID PROJECT NO. BR-0100(57)

SCALE: AS NOTED
DATE: March 2001

SHEET No. S3.2 OF 76 SHEETS