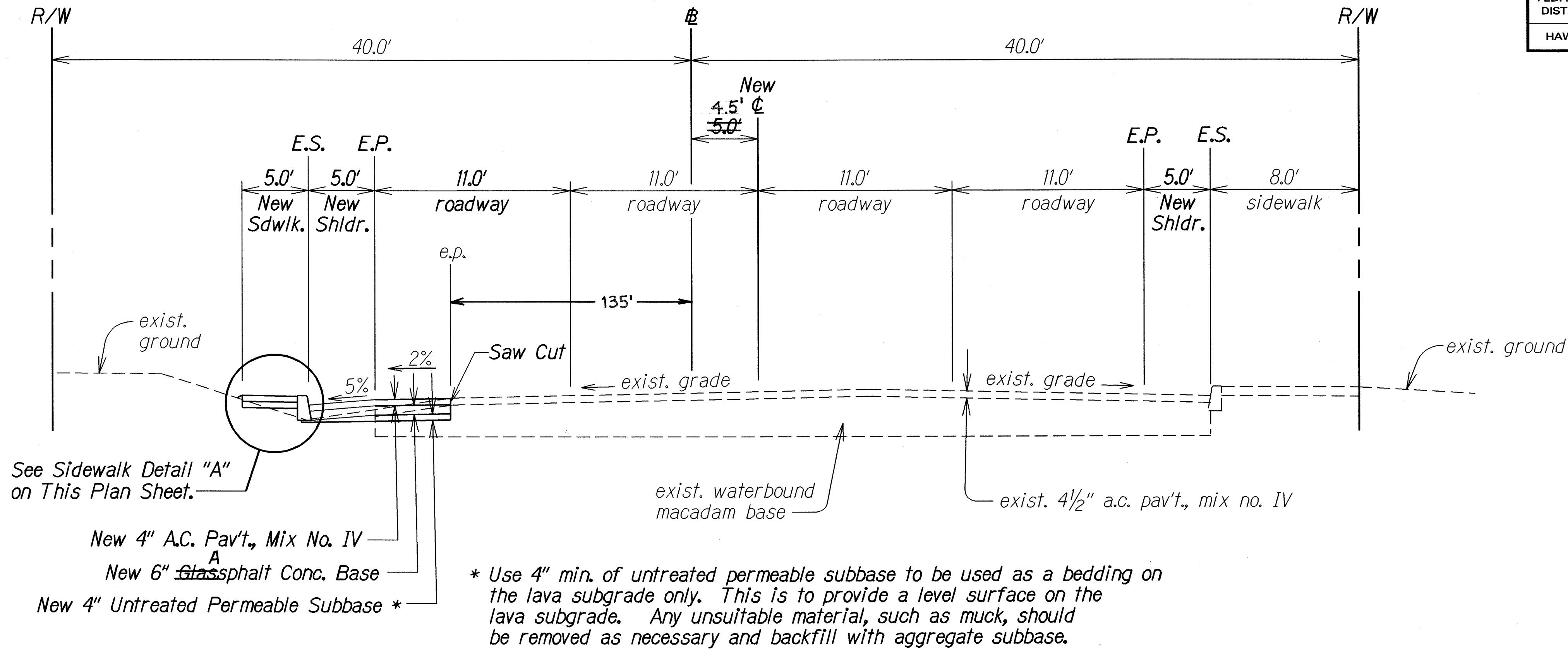
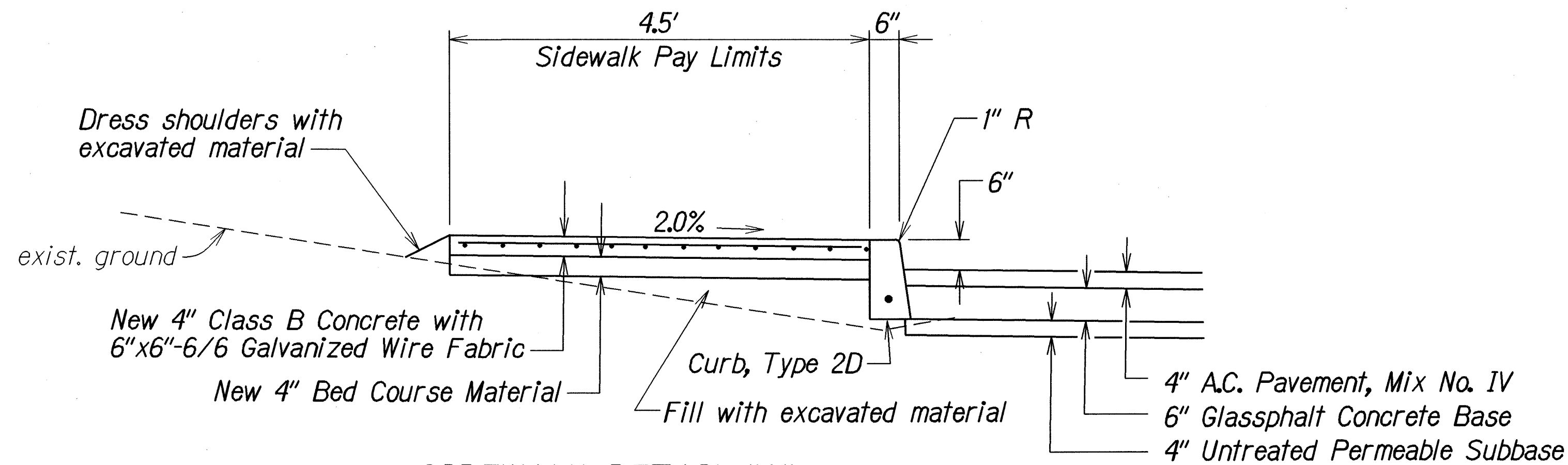


FED. ROAD DIST. NO.	STATE	FED. AID PROJ. NO.	FISCAL YEAR	SHEET NO.	TOTAL SHEETS
HAWAII	HAW.	NH-019-2(54)	2001	9	30



**TYPICAL SECTION**  
**KAMEHAMEHA AVENUE**  
**# STA. 47+88± TO # STA. 50+65±**  
Not To Scale



**SIDEWALK DETAIL "A"**  
**KAMEHAMEHA AVE. # STA. 48+18± TO # STA. 50+65±**  
Not To Scale

**Sidewalk Notes:**

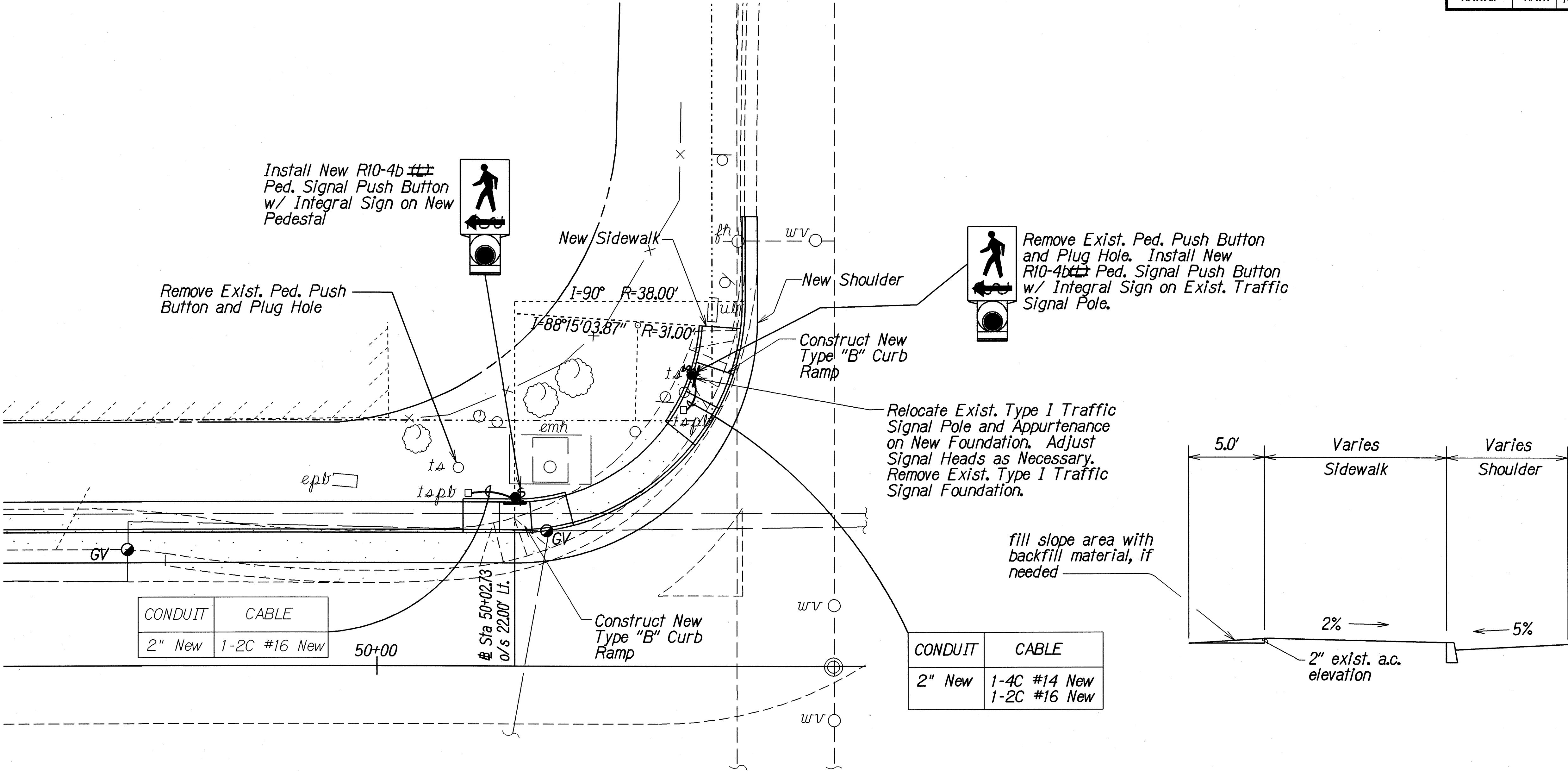
- Contractor shall carefully form sidewalk around the 8'x14' HELCO box located at Station 48+60 Lt. to prevent water ponding and to prevent tripping hazards.
- Refer to Standard Plan D-04 for Curb, Type 2D, Details.
- Refer to Sections 608, 609 and 610 of the Special Provisions and Standard Specifications for additional information.

SURVEY PLOTTED BY	DATE
DRAWN BY	02/28/00
DESIGNED BY	
QUANTITIES BY	
CHECKED BY	
ORIGINAL PLAN	
NOTE BOOK	
DESIGNED BY	
QUANTITIES BY	
CHECKED BY	

STATE OF HAWAII  
DEPARTMENT OF TRANSPORTATION  
HIGHWAYS DIVISION

**TYPICAL SECTION AND  
MISCELLANEOUS DETAIL**  
**KAMEHAMEHA AVENUE**  
**BIKEWAY IMPROVEMENTS**  
Hilo Bayfront Highway to Kalanianaʻole Avenue  
Federal Aid Project No. NH-019-2(54)  
Scale: As Shown Date: April, 2001

FED. ROAD DIST. NO.	STATE	FED. AID PROJ. NO.	FISCAL YEAR	SHEET NO.	TOTAL SHEETS
HAWAII	HAW.	NH-019-2(54)	2001	ADD. 10	30



**KAMEHAMEHA AVE./BANYAN DRIVE  
INTERSECTION DETAIL**  
Scale: 1"=10.0'

**TYPICAL SECTION  
FOR NEW SIDEWALK AT BANYAN DR. INTERSECTION**  
Not To Scale

DATE	12/20/01
SURVEY PLOTTED BY	MO. L.
DRAWN BY	MO. L.
DESIGNED BY	MO. L.
CHECKED BY	MO. L.
APPROVED BY	MO. L.
NOTED BY	MO. L.
ORIGINAL PLAN	NO. 1000000000

12/17/01	Revise Pedestrian Push Buttons
DATE	REVISION
STATE OF HAWAII DEPARTMENT OF TRANSPORTATION HIGHWAYS DIVISION	
<b>TYPICAL SECTION AND MISCELLANEOUS DETAIL</b>	
<b>KAMEHAMEHA AVENUE BIKEWAY IMPROVEMENTS</b>	
<b>Hilo Bayfront Highway to Kalanianaʻole Avenue</b>	
<b>Federal Aid Project No. NH-019-2(54)</b>	
Scale: As Shown	Date: April, 2001
SHEET No. 2 OF 2 SHEETS	

"AS-BUILT"

ADD 10