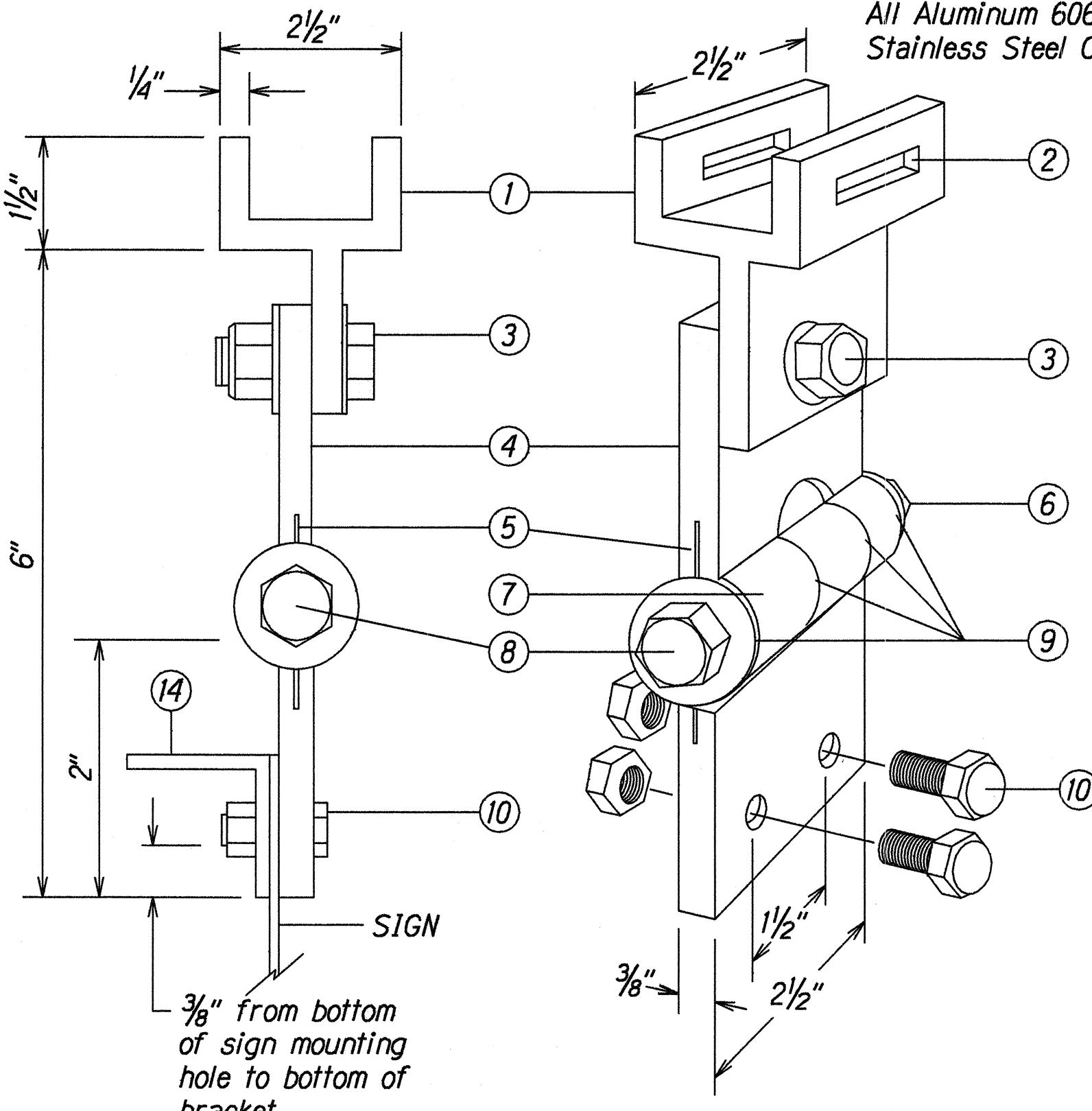
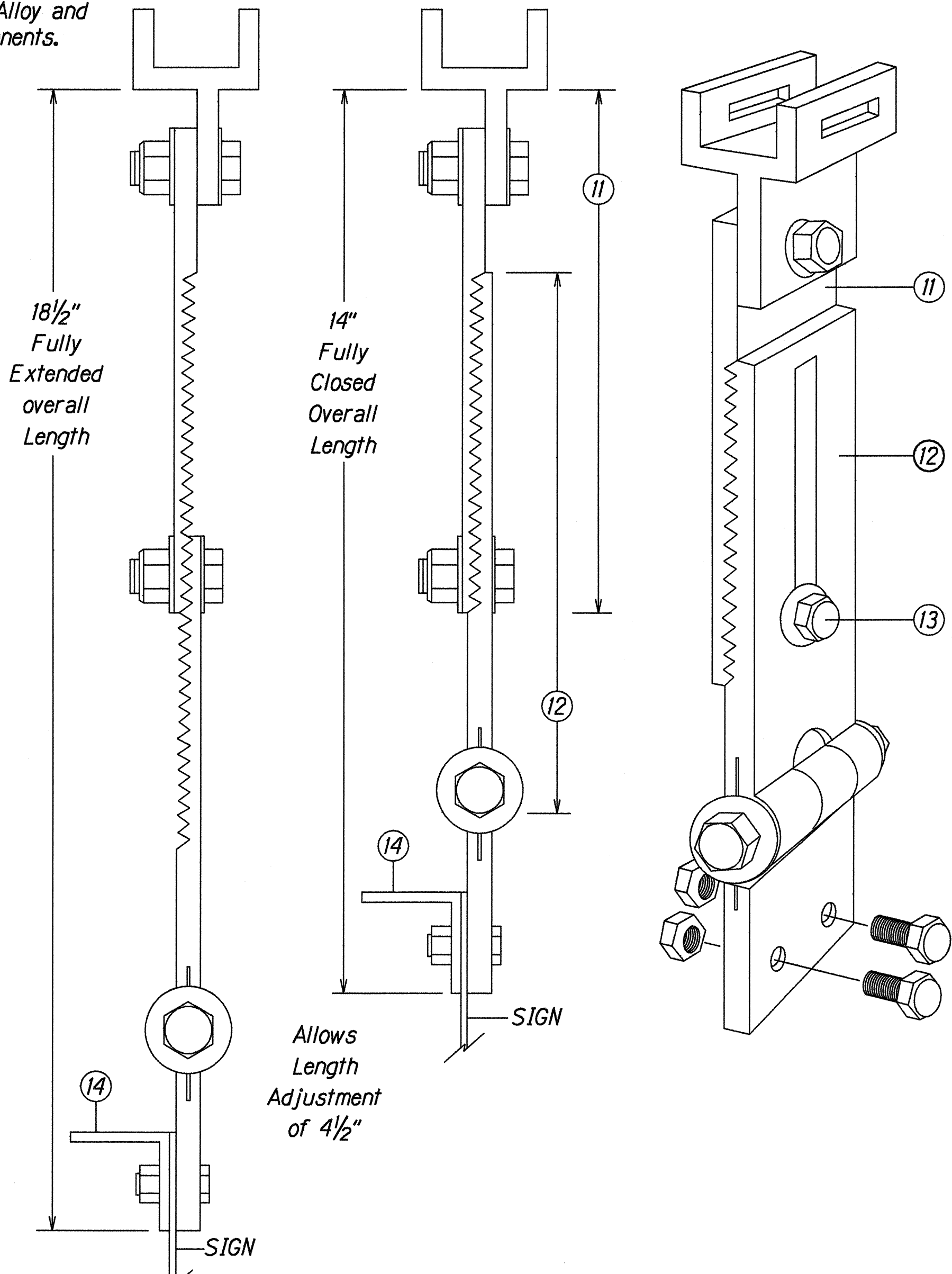


FED. ROAD DIST. NO.	STATE	PROJ. NO.	FISCAL YEAR	SHEET NO.	TOTAL SHEETS
HAWAII	HAW.	19A-01-98	2000	13	22

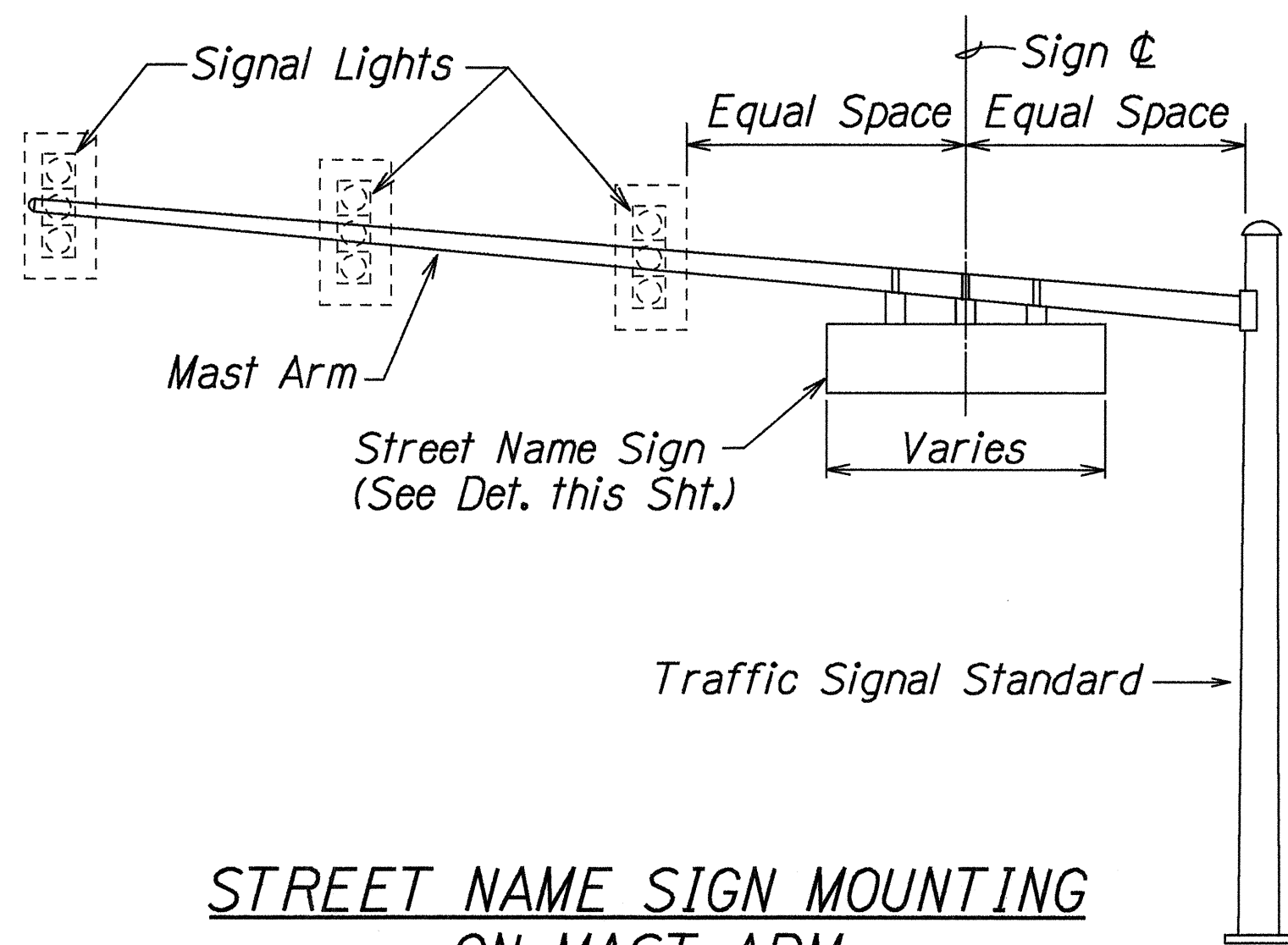


FIXED LENGTH NON-ADJUSTABLE SWING SIGN BRACKET

- ① Pivotal Upper Bracket
- ② 1 5/8" x 1/4" Slot for double strapping to electrolier mast arm. (M2G-34S(HD) .030" x 3/4" Heavy Duty Stainless Steel Strap with M2G-34B(HD) Buckle recommended.)
- ③ 1/2" - 13 x 1 1/2" Stainless Steel Hex Head Bolt with Stainless Steel Hex Lock Nut and 1/16" Stainless Steel Washer (both sides). Allows upper bracket to pivot and align with electrolier mast arm.
- ④ 6" Overall drop with Fixed Length Sign Bracket
- ⑤ Stainless Steel Dampener Spring (Removable)
- ⑥ Stainless Steel Hex Lock Nut with 1/16" Stainless Steel Washer
- ⑦ 1" O.D. Axle Housing
- ⑧ 1/2" - 13 x 4" Stainless Steel Hex Head Bolt with 1/16" Stainless Steel Washer
- ⑨ Oilite Bushing
- ⑩ Sign Mounting Sets, consisting of two each 5/16" - 18 x 1" Stainless Steel Hex Head Bolt with Stainless Steel Hex Lock Nut. Two holes on 1/2" centers provide positive lock sign mounting to bracket.
- ⑪ 8 1/4" overall length Upper Adjustable Sign Bracket section
- ⑫ 9" overall length Lower Adjustable Sign Bracket section, including Axle Housing (8" overall length to top of Axle Housing)
- ⑬ 1/2" - 13 x 1 1/2" Stainless Steel Hex Bolt with Stainless Steel Hex Lock Nut and 1/16" Stainless Steel Washers (both sides). Loosen lock nut, adjust bracket teeth to level sign.
- ⑭ 1 1/4" x 1 1/4" x 1/8" Aluminum Angle



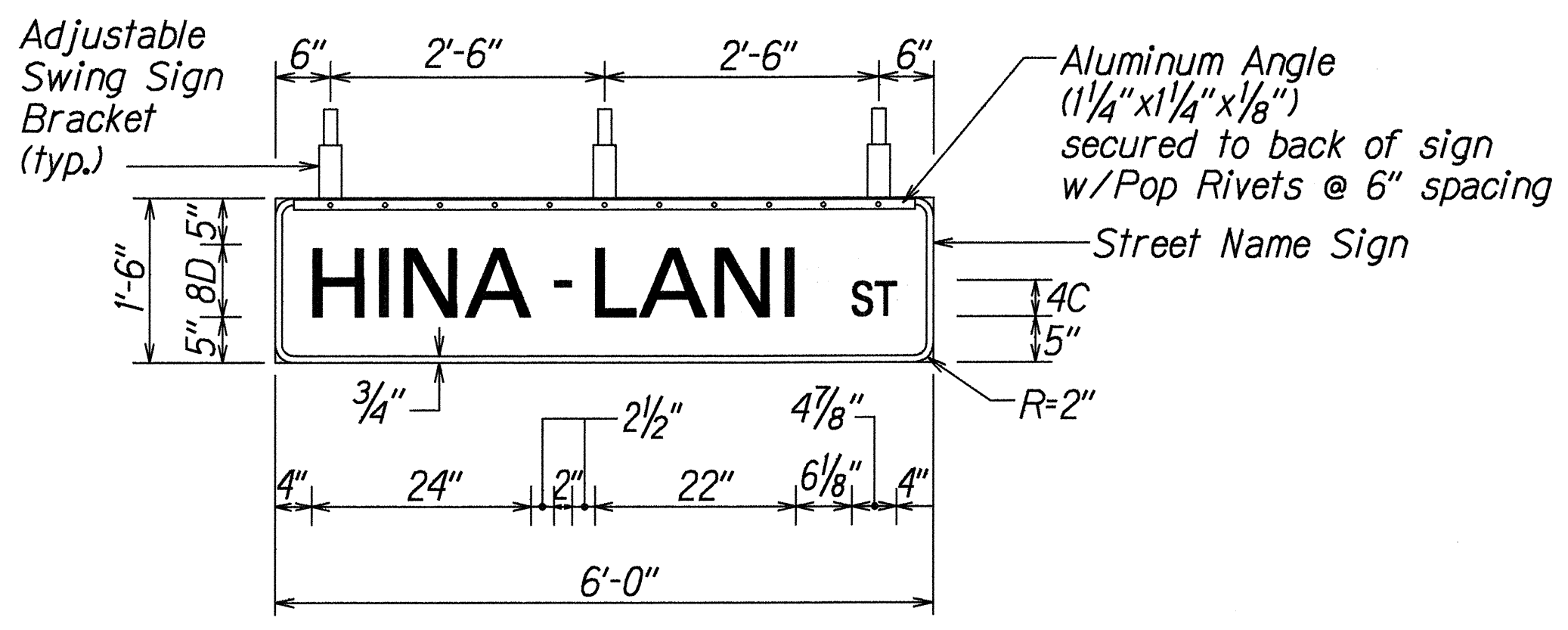
ADJUSTABLE LENGTH SWING SIGN BRACKET



STREET NAME SIGN MOUNTING ON MAST ARM

STREET NAME (D3) SIGN NOTES:

- Sign D3-1 shall be a new Street Name Sign. The Contractor shall provide the same message on the front and back side of the sign. Payment will not be made separately but shall be considered as one unit.
- Colors:
Legend - White (Reflectorized)
Background - Green (Reflectorized)
- All panels shall be reflectorized with Type III or IV retroreflective sheeting in accordance with Section - 712.20 of the Standard Specifications.
- All signs shall conform to section 621 of the Standard Specifications and the latest editions and amendments of the following FHWA publications:
a. "Manual on Uniform Traffic Control Devices for Streets and Highways" (MUTCD)
b. "Standard Highway Signs"
c. "Standard Alphabets for Highway Signs"
- Borders and messages shall conform to details as shown on the plans and as specified in the MUTCD.
- Sign mounting brackets, aluminum angle, fixtures, fasteners and all necessary hardware, and equipment, tools, labor, materials and other incidentals for installation, will not be paid for separately but shall be considered incidental to street name sign installation.
- Number of Swing Sign Brackets required per Sign Panel:
3 Brackets - Panel length 7' or less
4 Brackets - Panel length greater that 7' with a maximum length of 9'-6"
- Diacritical marks for Street Name are not authorized.



**D3-1 (Rear View)
PANEL & SWING BRACKET LAYOUT
FOR STREET NAME SIGN**

STATE OF HAWAII
DEPARTMENT OF TRANSPORTATION
HIGHWAYS DIVISION

SIGN MOUNTING DETAIL

QUEEN KAAHUMANU HIGHWAY
Installation of Traffic Signals
at Hina-Lani Street
Project No. 19A-01-98
Scale: As Noted Date: Feb., 2000

ORIGINAL PLAN	SURVEY PLOTTED BY	DATE
NOTE BOOK	DRAWN BY	
DESIGNED BY	DESIGNED BY	
CHECKED BY	CHECKED BY	
APPROVED BY	APPROVED BY	

Note: Dimensions may vary slightly.