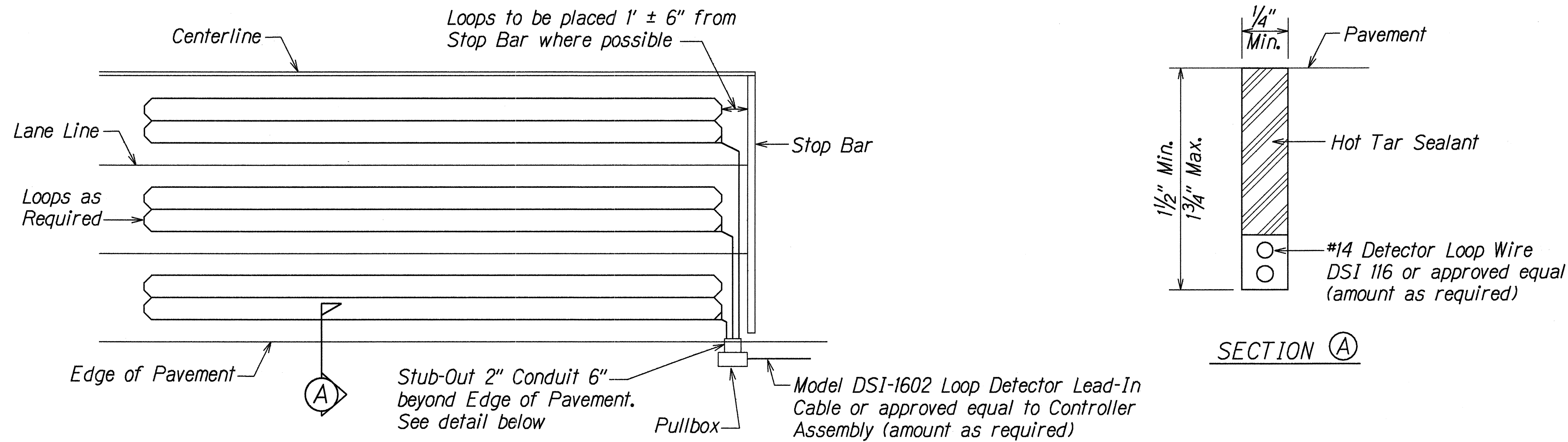
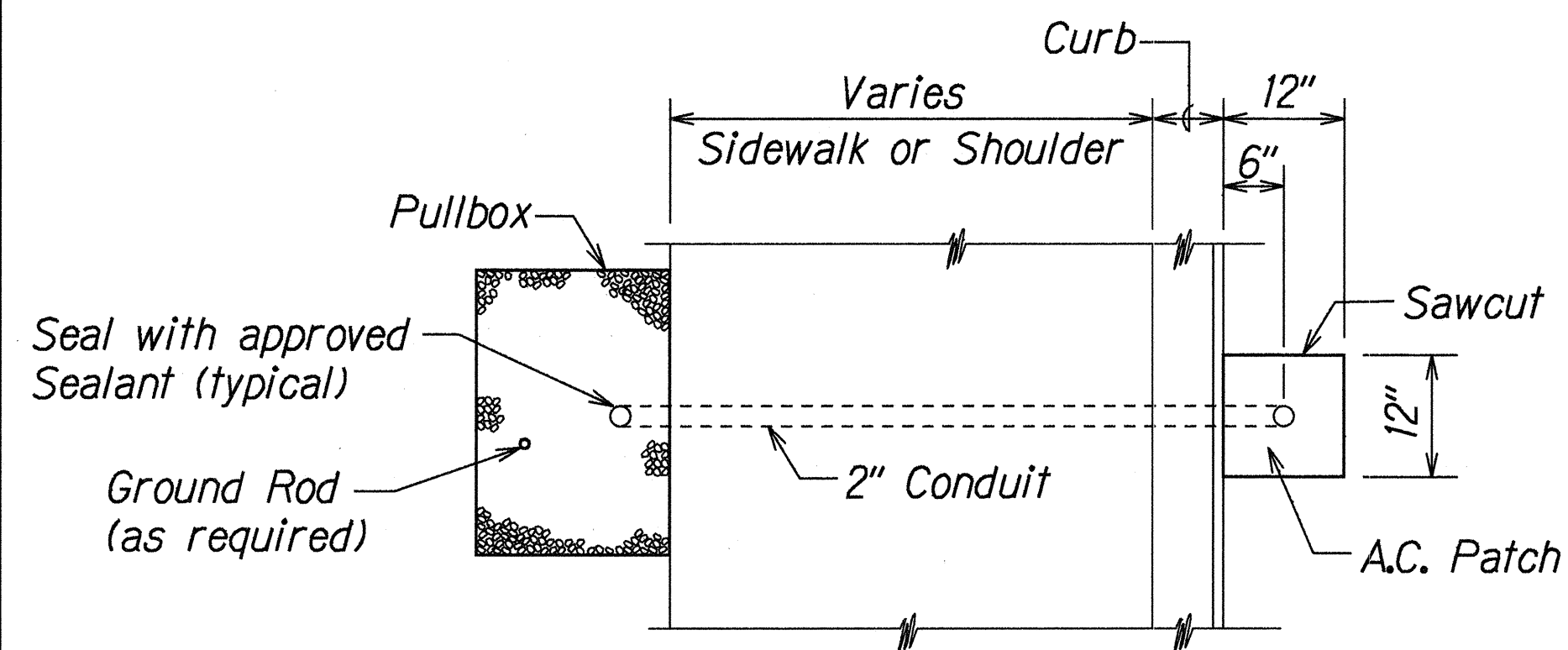


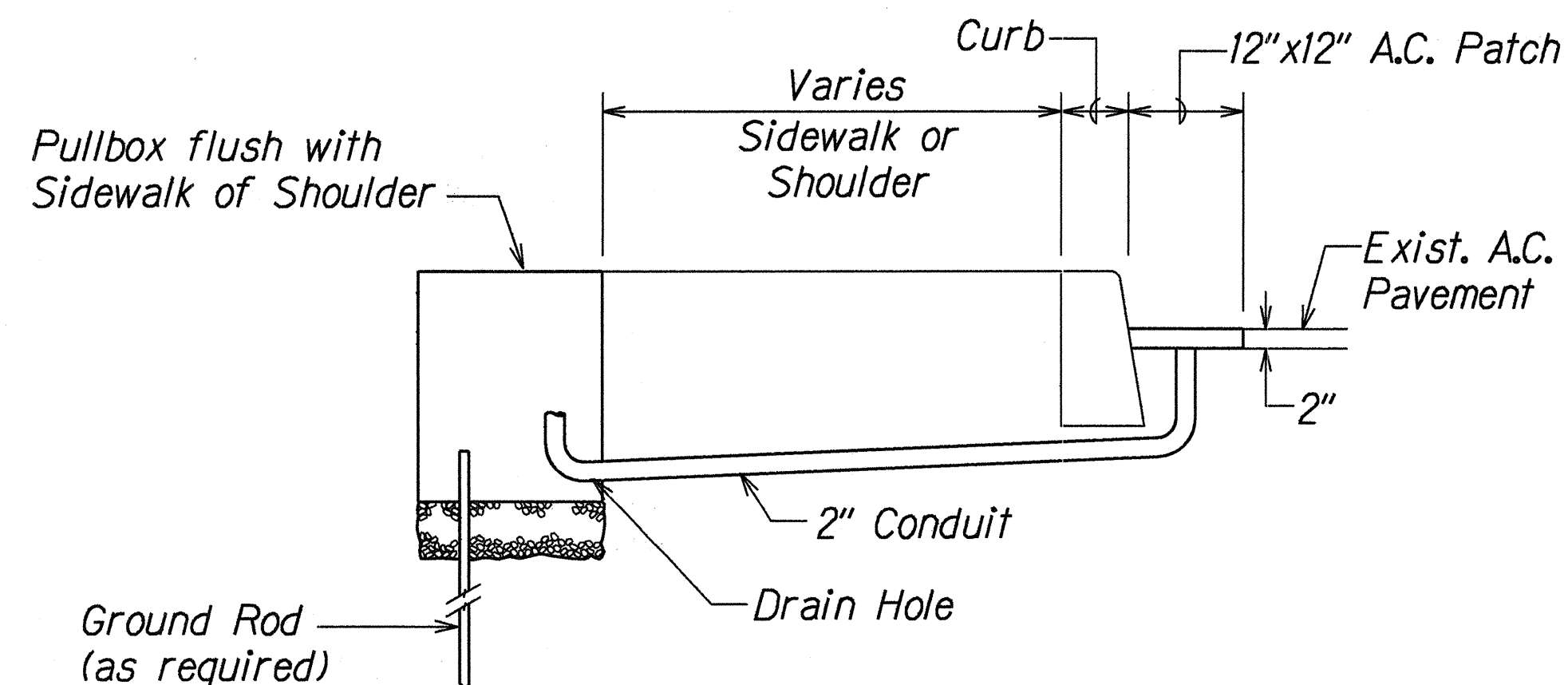
FED. ROAD DIST. NO.	STATE	PROJ. NO.	FISCAL YEAR	SHEET NO.	TOTAL SHEETS
HAWAII	HAW.	19A-01-98	2000	22	22



LOOP LAYOUT

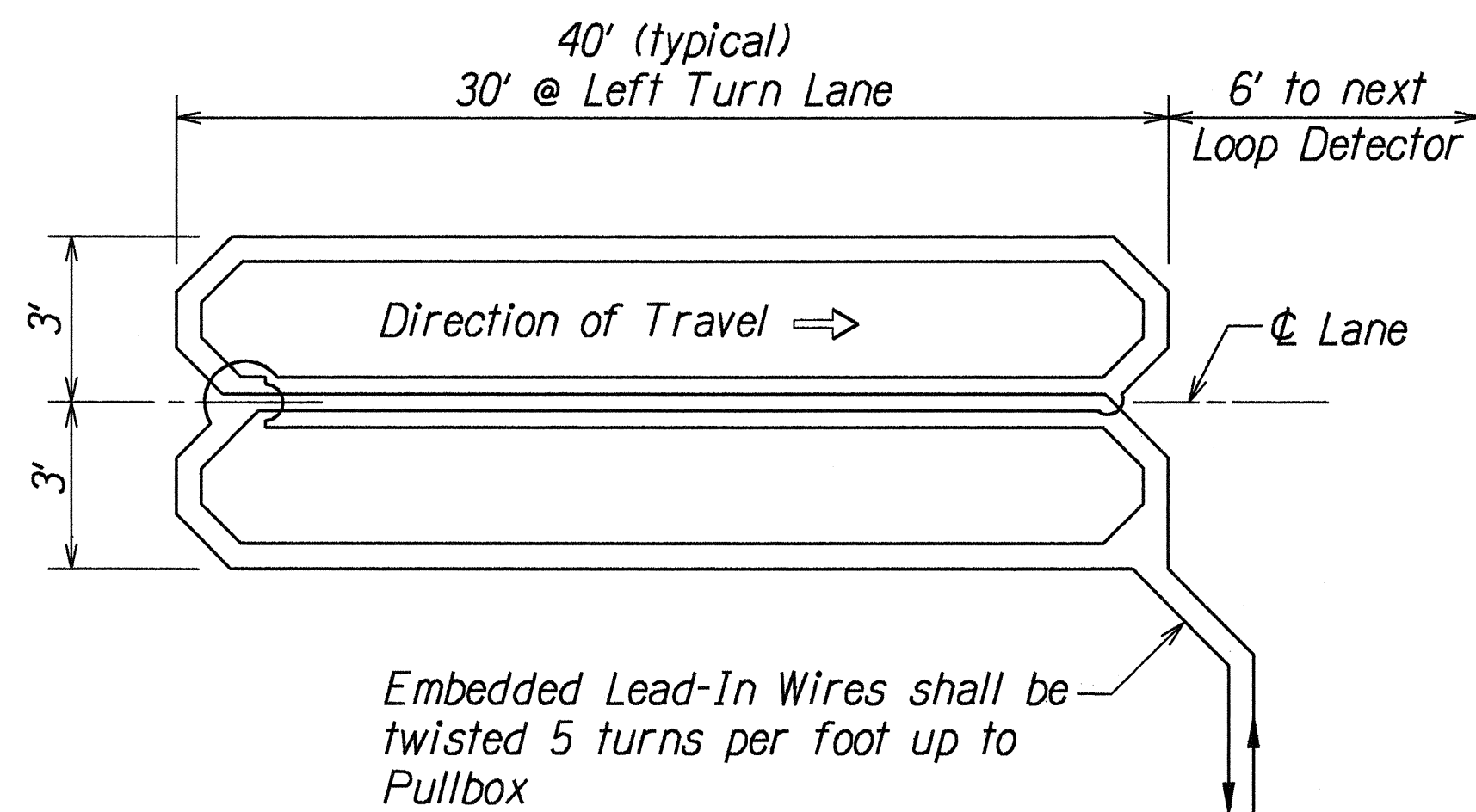


PLAN

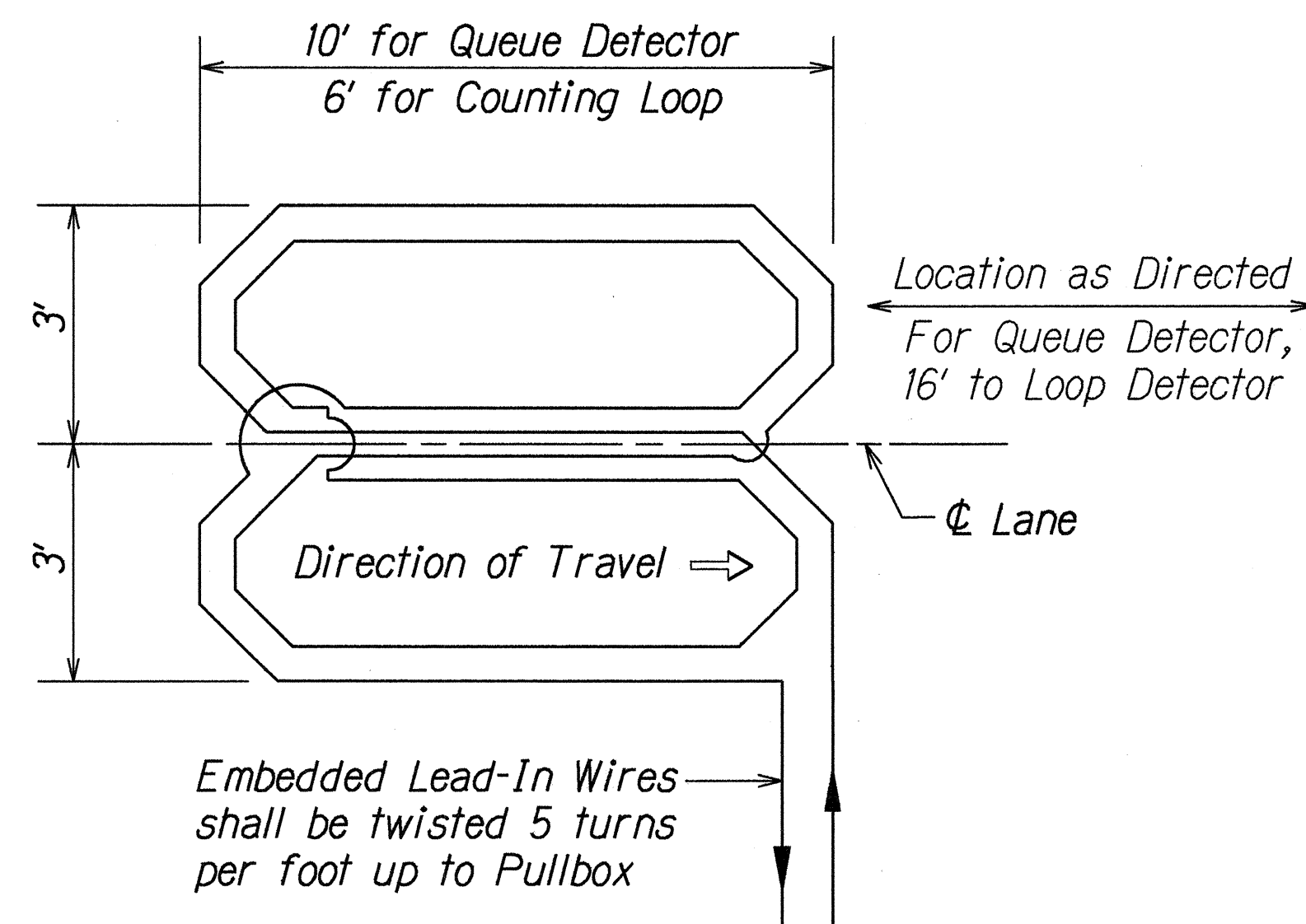


SECTION

LOOP DETECTOR STUB OUT



WIRING DIAGRAM



WIRING DIAGRAM - QUEUE/COUNTING DETECTORS

LOOP DETECTOR DETAILS

### NOTES

1. If abandoned in place, all existing loop detectors shall be saw cut completely through every 15' to prevent inductive coupling.
2. All loop detector lead in cables shall be identified in the cabinet with it's appropriate loop detector assignment number per plans.
3. When hot sealants are used, only polyester insulation with a minimum 400° melting point will be permitted.

SURVEY PLOTTED BY	DATE
DRAWN BY	
NOTES	
DESIGNED BY	
CHECKED BY	
ORIGINAL PLAN	
NOTE BOOK	
DESIGNED BY	
CHECKED BY	
NO. 50410001	

STATE OF HAWAII  
DEPARTMENT OF TRANSPORTATION  
HIGHWAYS DIVISION

**LOOP DETECTORS &  
DUCT DETAILS**  
 QUEEN KAAHUMANU HIGHWAY  
 Installation of Traffic Signals  
 at Hina-Lani Street  
 Project No. 19A-01-98  
 Not to Scale Date: Feb., 2000  
 SHEET No. 1 OF 1 SHEETS