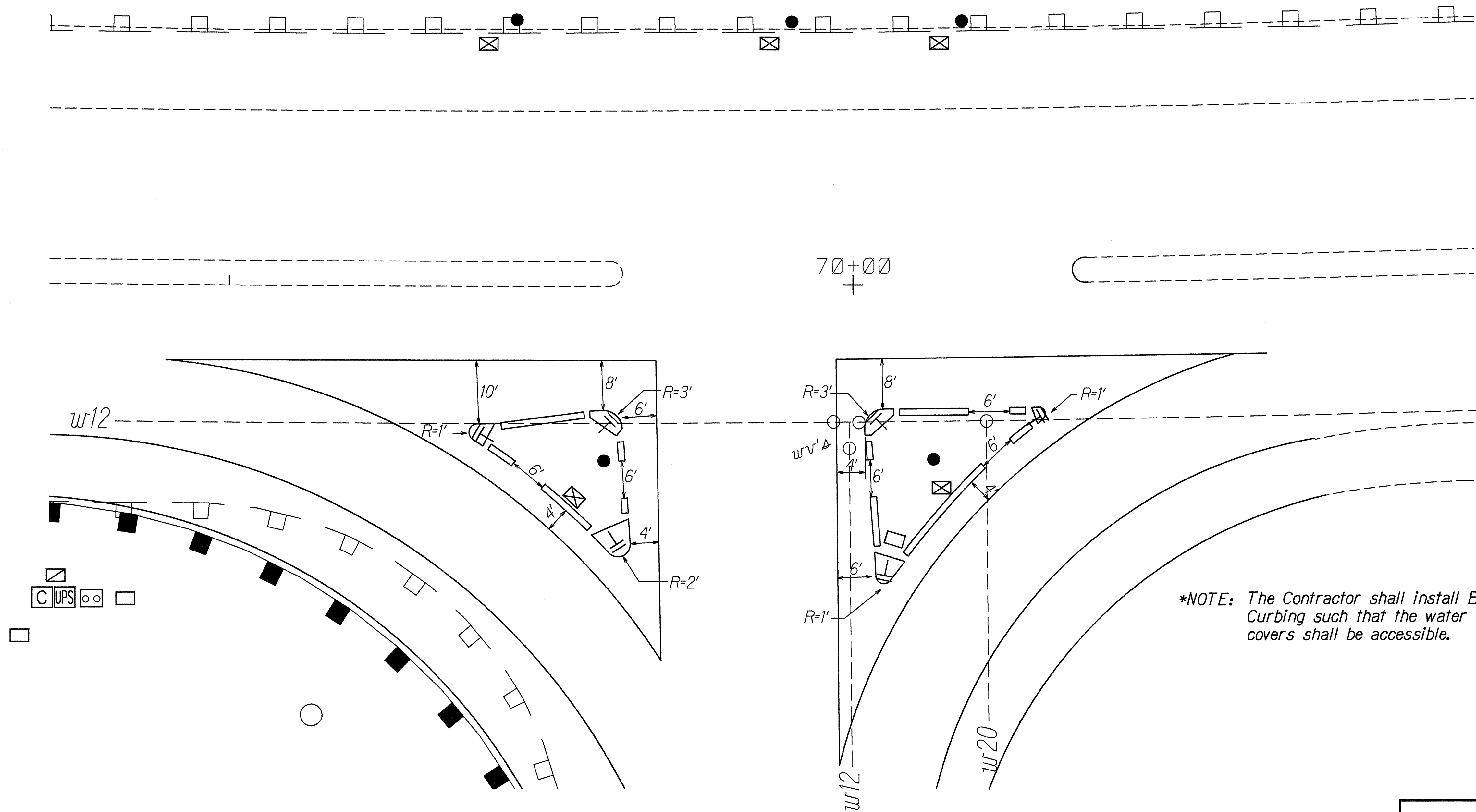


FED. ROAD DIST. NO.	STATE	PROJ. NO.	FISCAL YEAR	SHEET NO.	TOTAL SHEETS
HAWAII	HAW.	19A-01-98	2000	7	22



ORIGINAL PLAN	SURVEY PLOTTED BY	DATE
NOTE BOOK	DRAWN BY M. Takai	1/1/00
10/1/00	TRACED BY Richard Akana	
10/1/00	QUANTITIES BY	
10/1/00	CHECKED BY	

STATE OF HAWAII
DEPARTMENT OF TRANSPORTATION
HIGHWAYS DIVISION

BITUMINOUS CURB DETAIL

QUEEN KAAHUMANU HIGHWAY
Installation of Traffic Signals
at Hina-Lani Street
Project No. 19A-01-98

Scale: 1"=10' Date: Feb., 2000

SHEET No. 1 OF 1 SHEETS