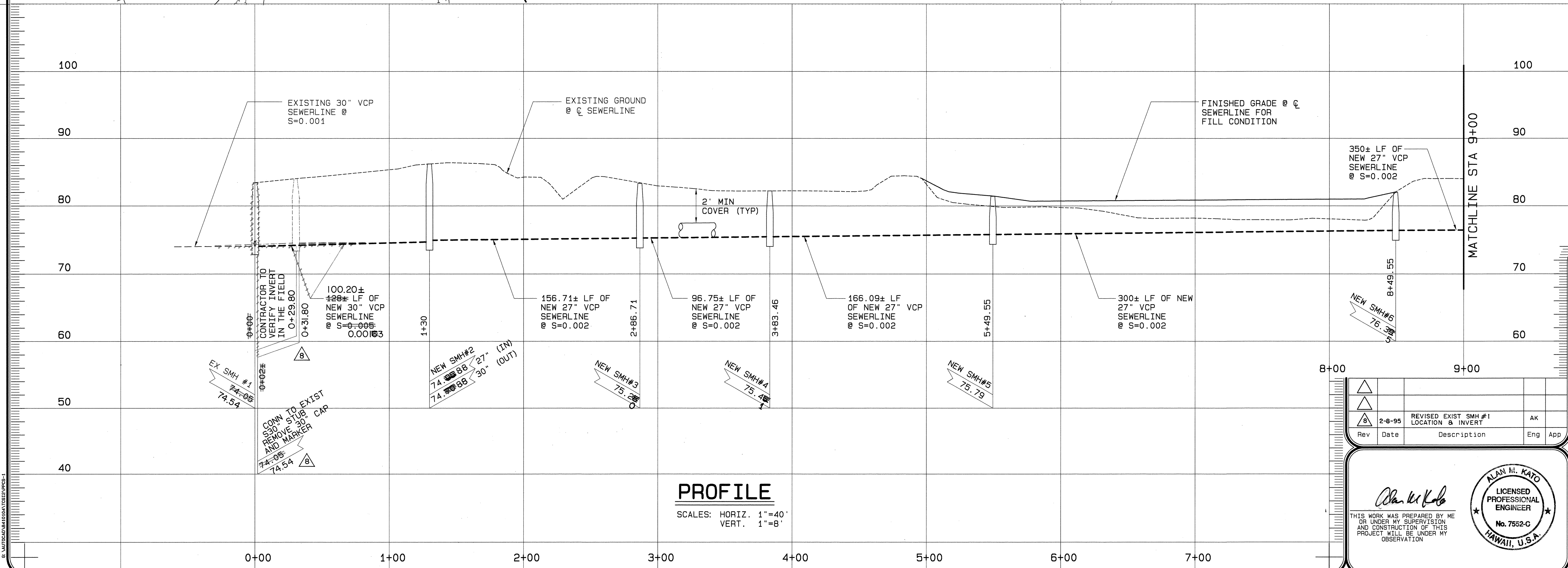


TYPICAL SECTION-SEWERLINE  
EASEMENT THROUGH GOLF COURSE

SCALE:  $1/4" = 1' - 0"$



PROJECT NO.190A-02-92
-----------------------

**B  
C  
A** **BELT COLLINS & ASSOCIATES**  
Engineering • Planning • Landscape Architecture  
680 Ala Moana Boulevard Suite 200 Honolulu, Hawaii 96813  
Phone: (808) 521-5361 Telex: BELTH 7430474 Fax: (808) 538-7819

Consultant:

Client:  
HOUSING FINANCE AND  
DEVELOPMENT CORPORATION  
STATE OF HAWAII

VILLAGES OF LA'I'OPUA  
BACKBONE INFRASTRUCTURE PHASE-2A

PLAN AND PROFILE  
SEWERLINE  
STA 0+00 TO STA 9+00

Designed by: C. ENDO Date: NOVEMBER 1993  
 Drawn by: S.E.A./S.M.R. Proj. no.: (BCA) 841.0104

Approved: \_\_\_\_\_

_____	_____
Date	Date
_____	_____
Date	Date

△				
△				
△ 8	2-8-95	REVISED EXIST SMH #1 LOCATION & INVERT	AK	
Rev	Date	Description	Eng	App

*Alan K. Kato*

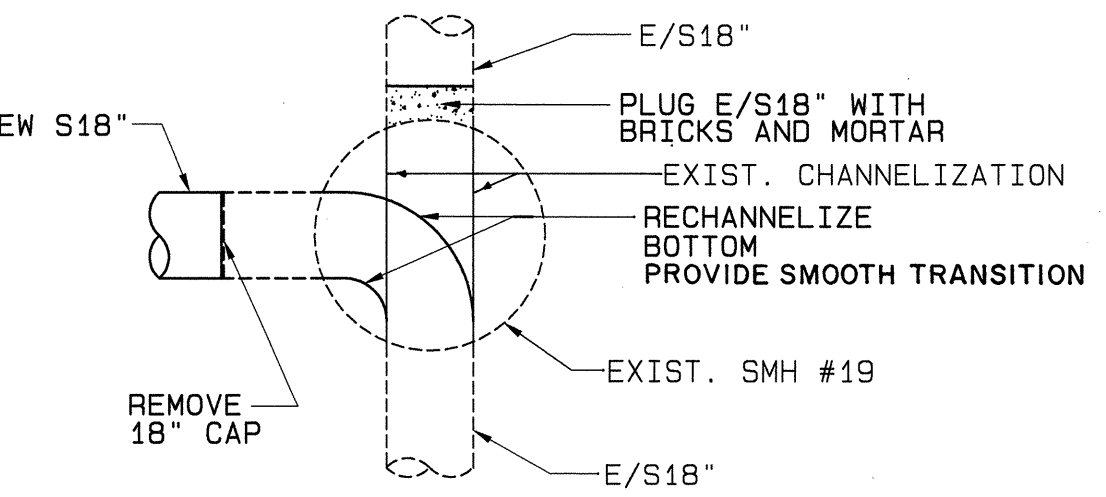
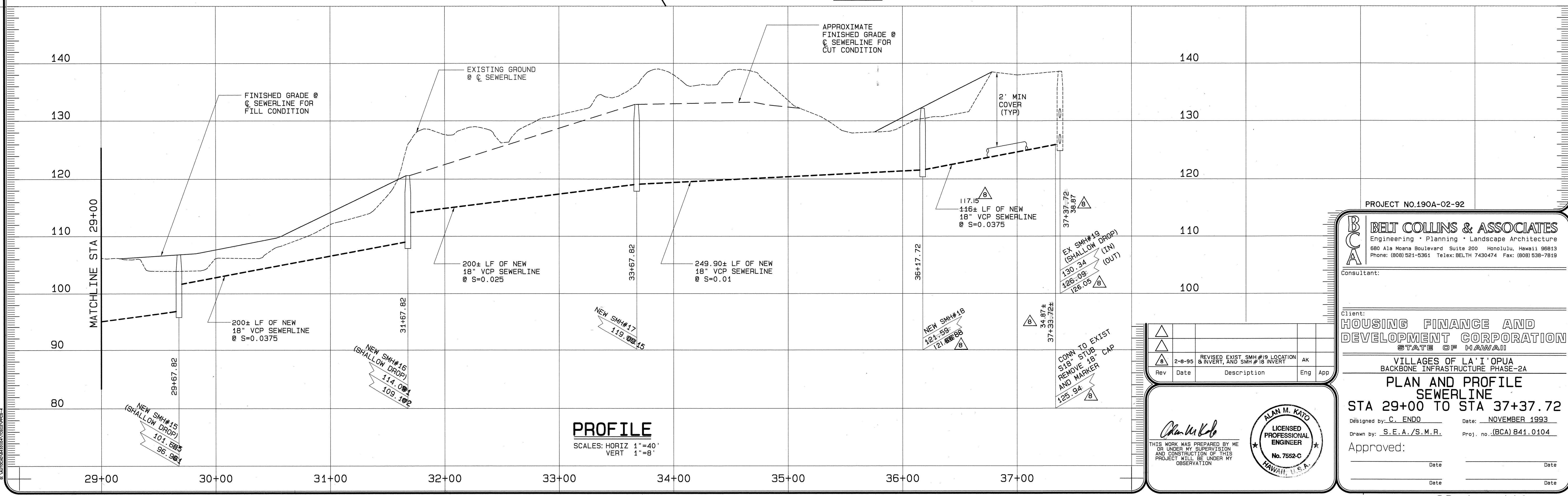
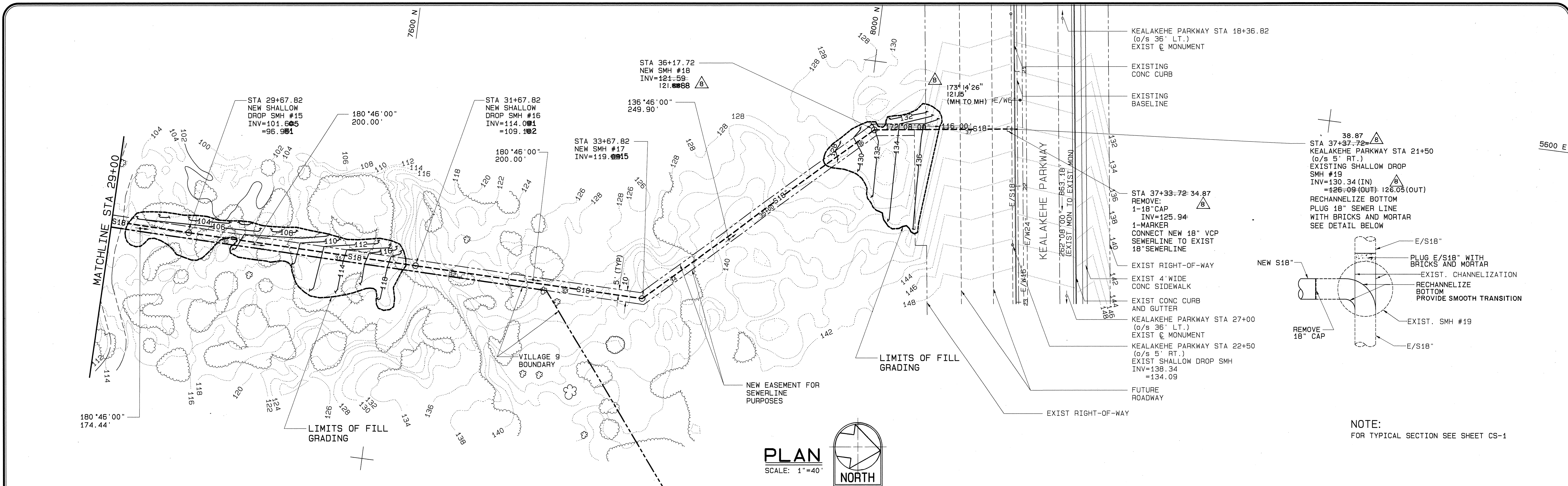
THIS WORK WAS PREPARED BY ME  
OR UNDER MY SUPERVISION,  
AND CONSTRUCTION OF THIS  
PROJECT WILL BE UNDER MY  
OBSERVATION

ALAN K. KATO  
LICENSED  
PROFESSIONAL  
ENGINEER  
No. 7552-C  
HAWAII, U.S.A.

Trim: 22" x 36"

# RECORD DRAWINGS

SHEET CS-1 of 111 Sheets



NOTE:  
FOR TYPICAL SECTION SEE SHEET CS-1

PROJECT NO.190A-02-92

**BELT COLLINS & ASSOCIATES**  
Engineering • Planning • Landscape Architecture  
680 Ala Moana Boulevard Suite 200 Honolulu, Hawaii 96813  
Phone: (808) 521-5361 Telex: BELTH 7430474 Fax: (808) 538-7919

Client:  
**HOUSING FINANCE AND DEVELOPMENT CORPORATION**  
STATE OF HAWAII

VILLAGES OF LA'I OPUA  
BACKBONE INFRASTRUCTURE PHASE-2A

**PLAN AND PROFILE  
SEWERLINE**  
STA 29+00 TO STA 37+37.72

Designed by: C. ENDO Date: NOVEMBER 1993  
Drawn by: S.E.A./S.M.R. Proj. no.: (BCA) 841.0104

Approved: \_\_\_\_\_

Rev 2-8-95 8 INVERT, AND SMH #18 INVERT AK

Rev 2-8-95 8 INVERT, AND SMH #18 INVERT AK

Rev 2-8-95 8 INVERT, AND SMH #18 INVERT AK

ALAN M. KATO  
LICENSED PROFESSIONAL ENGINEER  
No. 7552-C  
HAWAII, U.S.A.