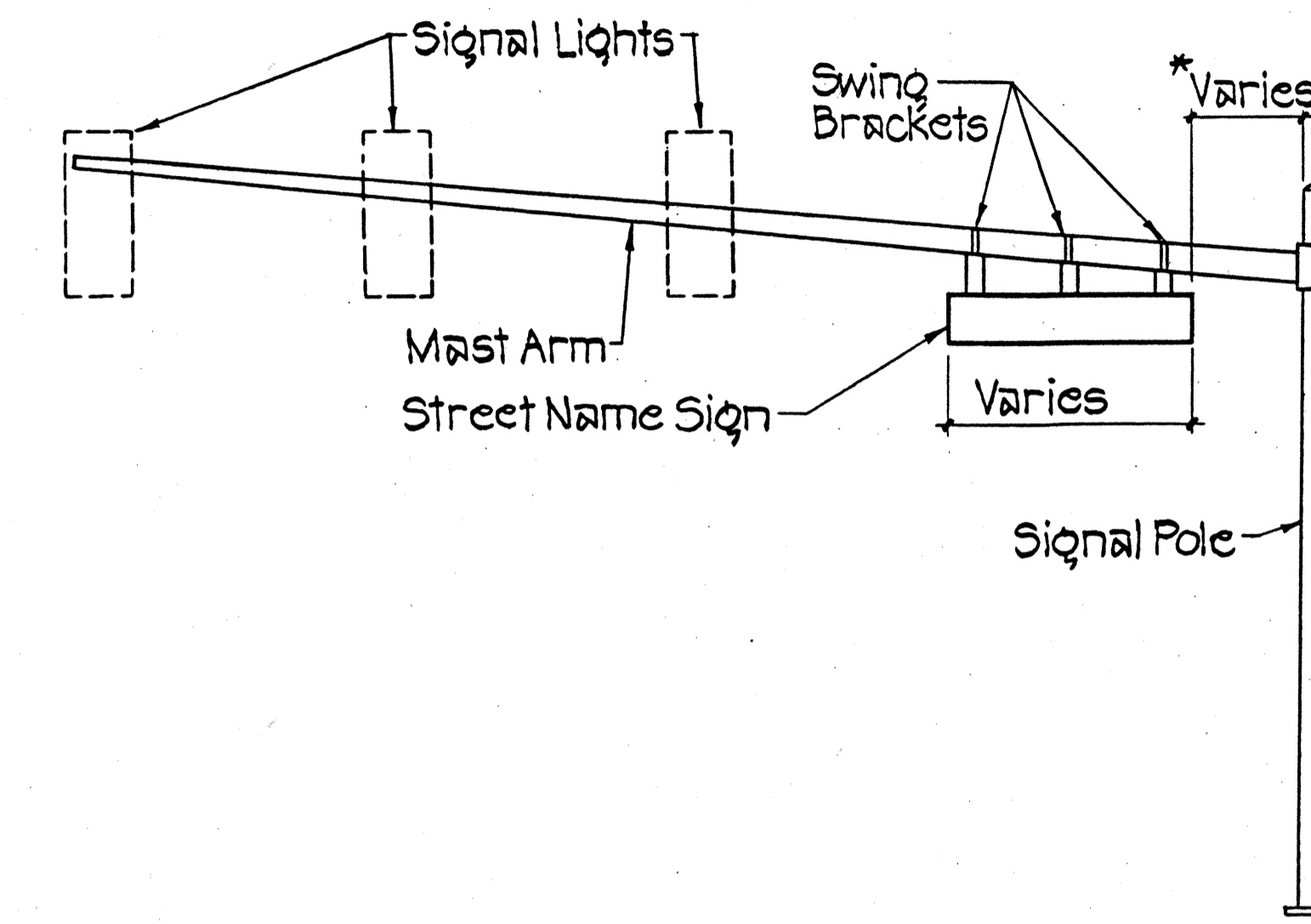


FED. ROAD DIST. NO.	STATE	FED. AID PROJ. NO.	FISCAL YEAR	SHEET NO.	TOTAL SHEETS
HAWAII	HAW.	STP-019-1(22)	1998	10	17

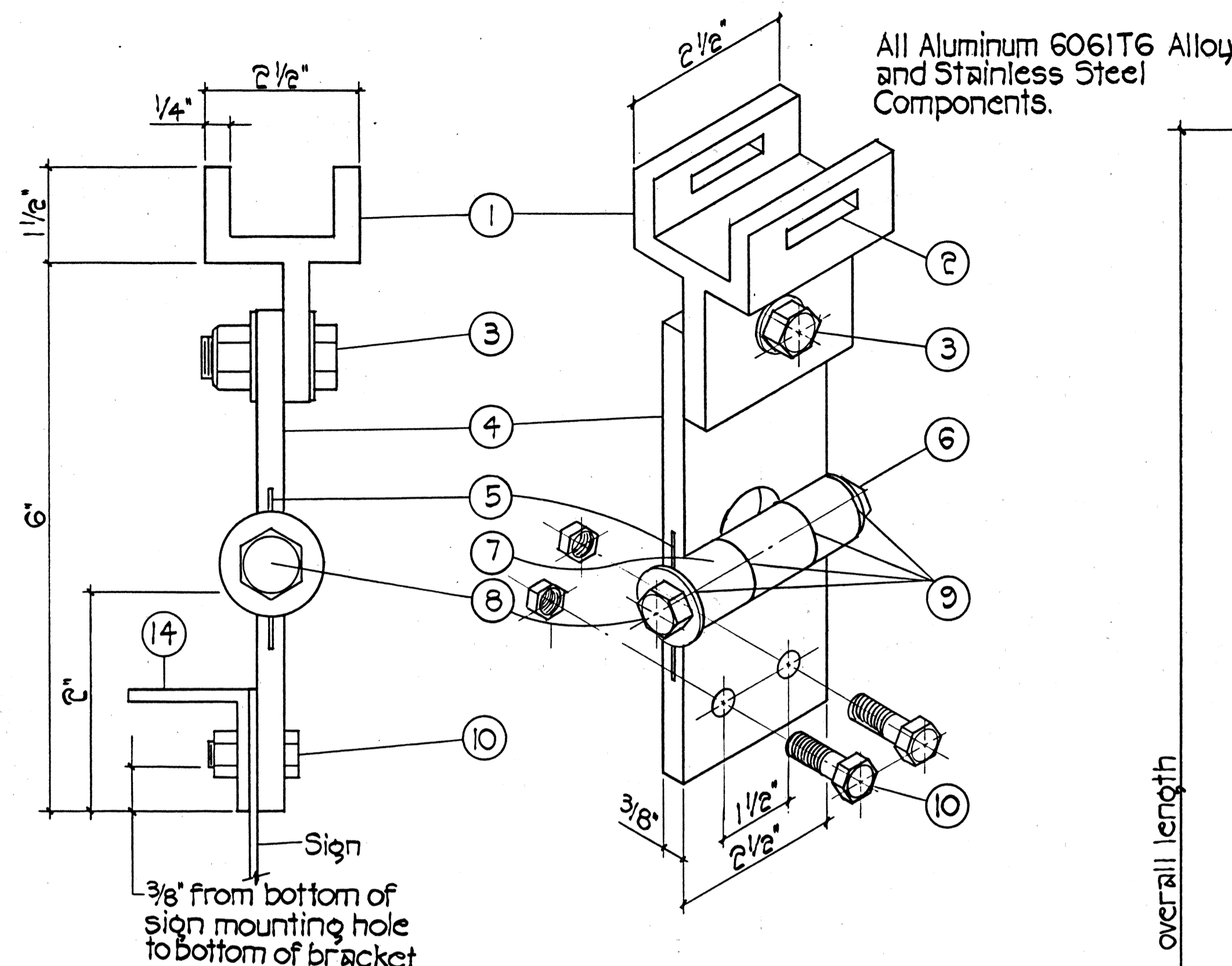
*To be determined by the Engineer.



STREET NAME SIGN MOUNTING ON MAST ARM Not to Scale

NOTES:

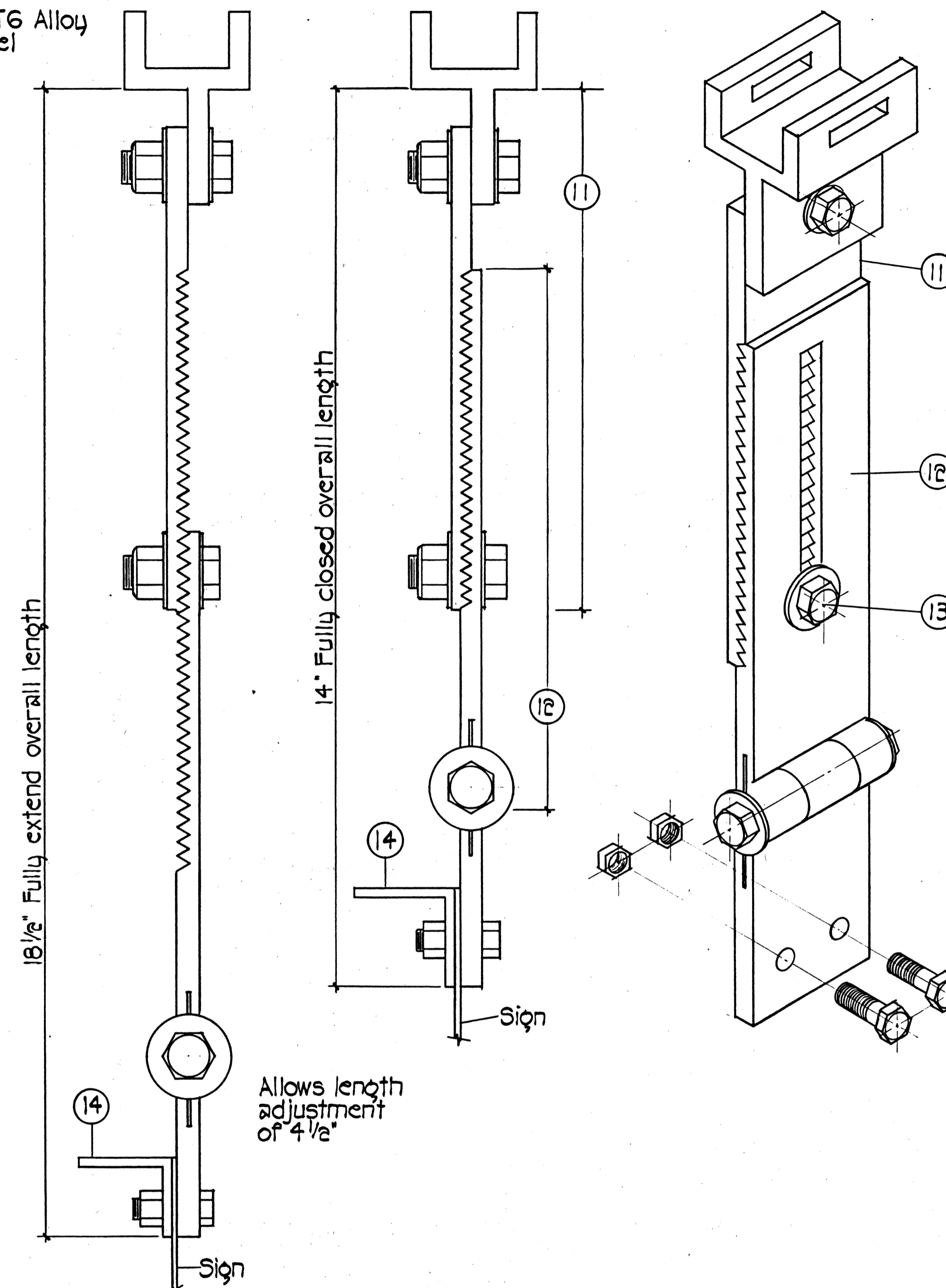
- All Street Name Signs shall conform to Section 681 of the Standard Specifications and the latest editions and amendments of the follow FHWA publications:
 - "Manual on Uniform Traffic Control Devices for Streets and Highways" (MUTCD).
 - "Standard Highway Signs".
 - "Standard Alphabets for Highway Signs".
- Colors
Legend - White (Reflectorized)
Background - Green (Reflectorized)
- All panel shall be reflectorized with Type B reflective sheeting in accordance with Section 712.00 of the Standard Specifications.
- The Contractor shall provide the same message on the front and back side of the sign.
- Borders and messages shall conform to details as shown on the Plans and as specified in the MUTCD.
- Sign mounting brackets, aluminum angle, fixtures, fasteners necessary hardware and equipment, tools, labor materials and other incidentals for installation, will not be paid for separately but shall be considered incidental to the Street Name Sign installed complete.



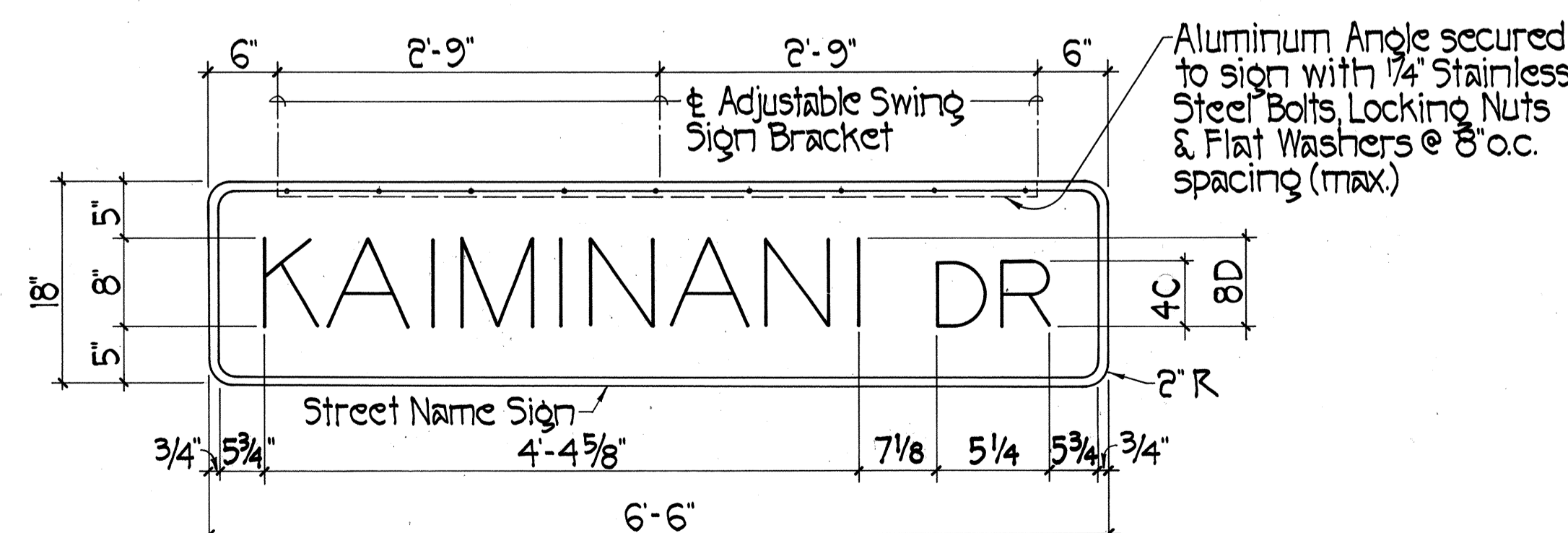
FIXED LENGTH NON-ADJUSTABLE SWING SIGN BRACKET Not to Scale

- Pivotal Upper Bracket
- 1 5/8" x 1/4" Slot for double strapping to electrolier mast arm. (M2G-34S(HD) .030" x 3/4" heavy duty stainless steel strap with M2G-34B(HD) buckle recommended.
- 1/2" - 13 x 1 1/2" Stainless steel hex head bolt with stainless steel hex lock nut and 1/16" stainless steel washer (both sides). Allows upper bracket to pivot and align with electrolier mast arm.
- 6" Overall drop with fixed length sign bracket.
- Stainless steel dampener spring (removable).
- Stainless steel hex lock nut with 1/16" stainless steel washer.
- 1" O.D. Axle housing
- 1/2" - 13 x 4" Stainless steel hex head bolt with 1/16" stainless steel washer.
- Oilite bushing
- Sign mounting sets, consisting of two each 5/16" - 18 x 1" stainless steel hex head bolt with stainless steel hex lock nut. Two holes on 1 1/2" centers provide positive lock sign mounting to bracket.
- 8 1/4" overall length upper adjustable sign bracket section.
- 9" overall length lower adjustable sign bracket section, including axle housing (8" overall length to top of axle housing).
- 1/2" - 13 x 1 1/2" Stainless steel hex bolt with stainless steel hex lock nut and 1/16" stainless steel washers (both sides). Loosen lock nut, adjust bracket teeth to level sign.
- 1 1/4" x 1 1/4" x 1/8" Aluminum angle.

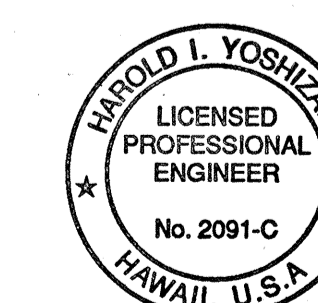
Note: Dimension may vary slightly.



ADJUSTABLE LENGTH SWING SIGN BRACKET Not to Scale



STREET NAME SIGN ON MAST ARM Not to Scale



THIS WORK WAS PREPARED BY ME OR UNDER MY SUPERVISION.
Harold I. Yoshizaki
SHIMABUKURO, ENDO & YOSHIZAKI, INC.
1126 12th Avenue
Honolulu, Hawaii 96816

STATE OF HAWAII
DEPARTMENT OF TRANSPORTATION
HIGHWAYS DIVISION

SWING SIGN BRACKET DETAILS

QUEEN KAAHUMANU HIGHWAY
TRAFFIC SIGNALS @ KAIMINANI DRIVE
FEDERAL AID PROJECT NO. STP-019-1(22)

SCALE: AS SHOWN DATE: May 1997

SHEET NO. 1 OF 1 SHEETS

DATE	_____
DESIGNED BY	_____
CHECKED BY	_____
QUANTITIES BY	_____
NOTED BY	_____
ORIGINAL PLAN	_____
NO.	_____