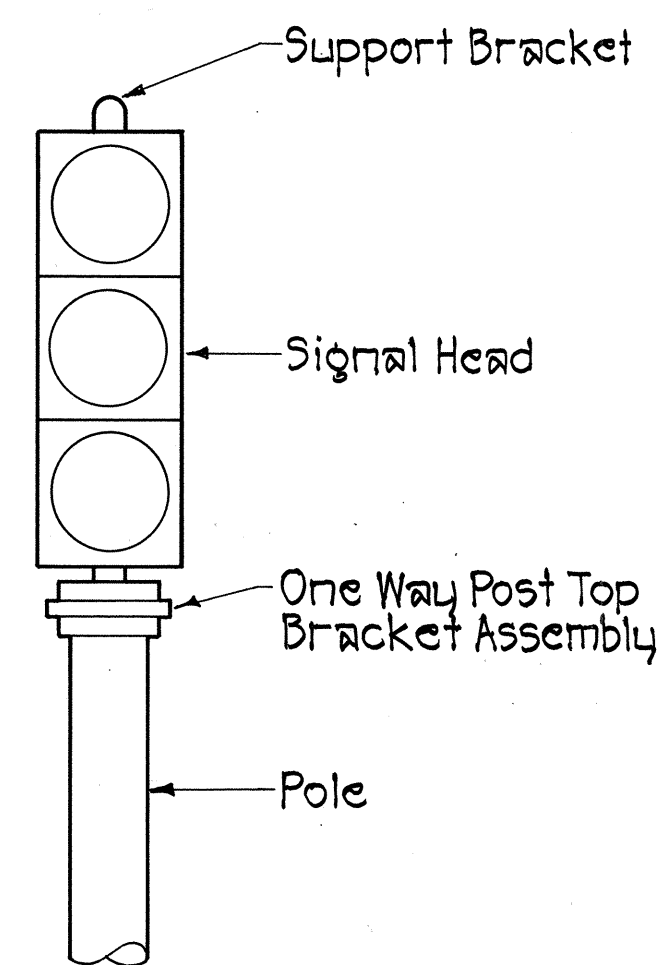
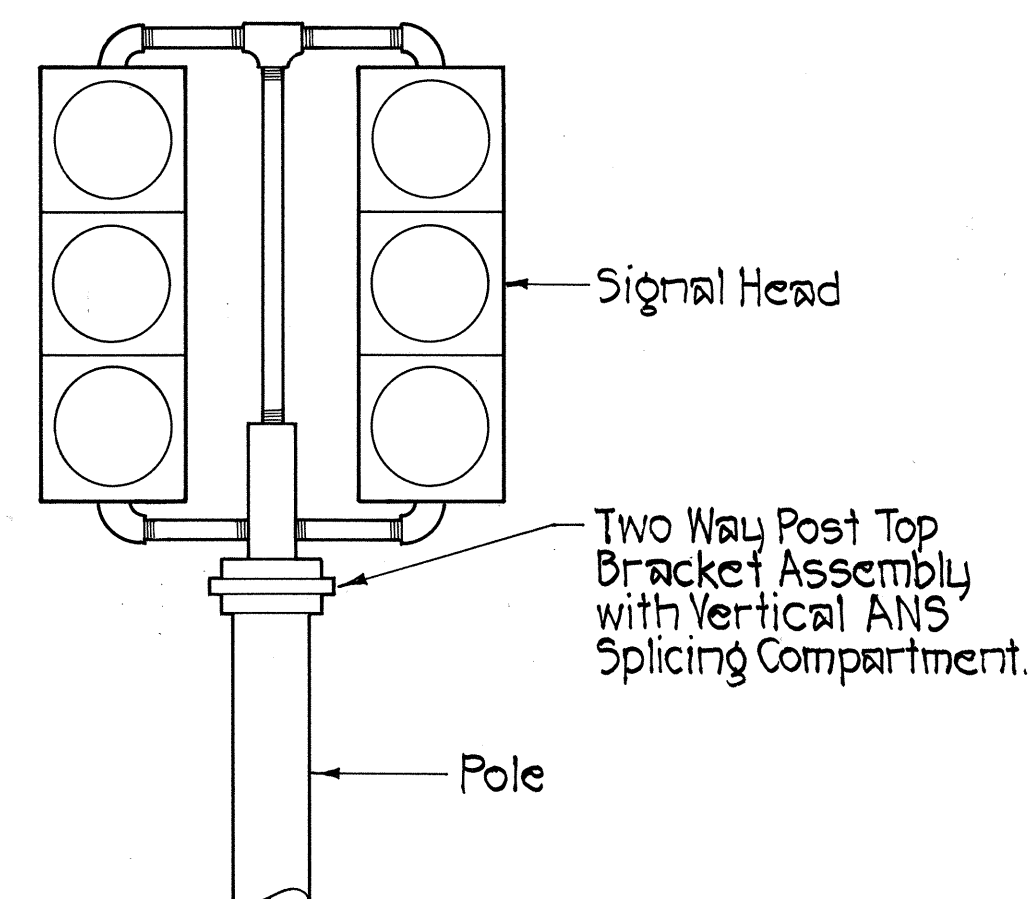


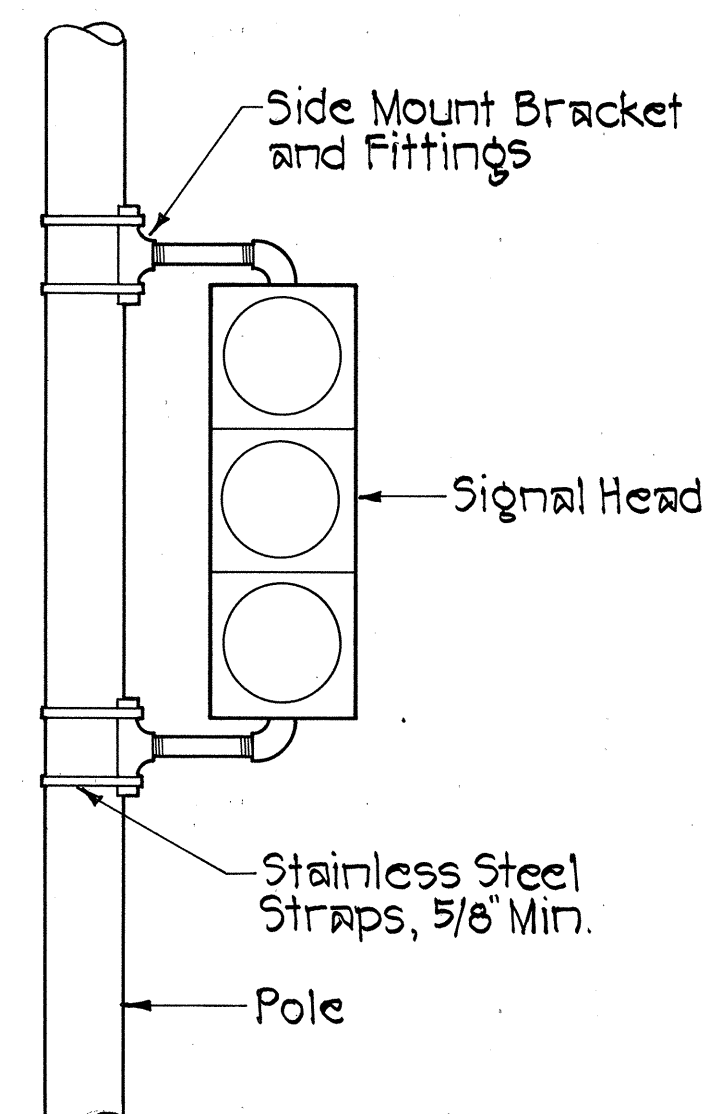
FED. ROAD DIST. NO.	STATE	FED. AID PROJ. NO.	FISCAL YEAR	SHEET NO.	TOTAL SHEETS
HAWAII	HAW.	STP-019-1(22)	1998	12	17



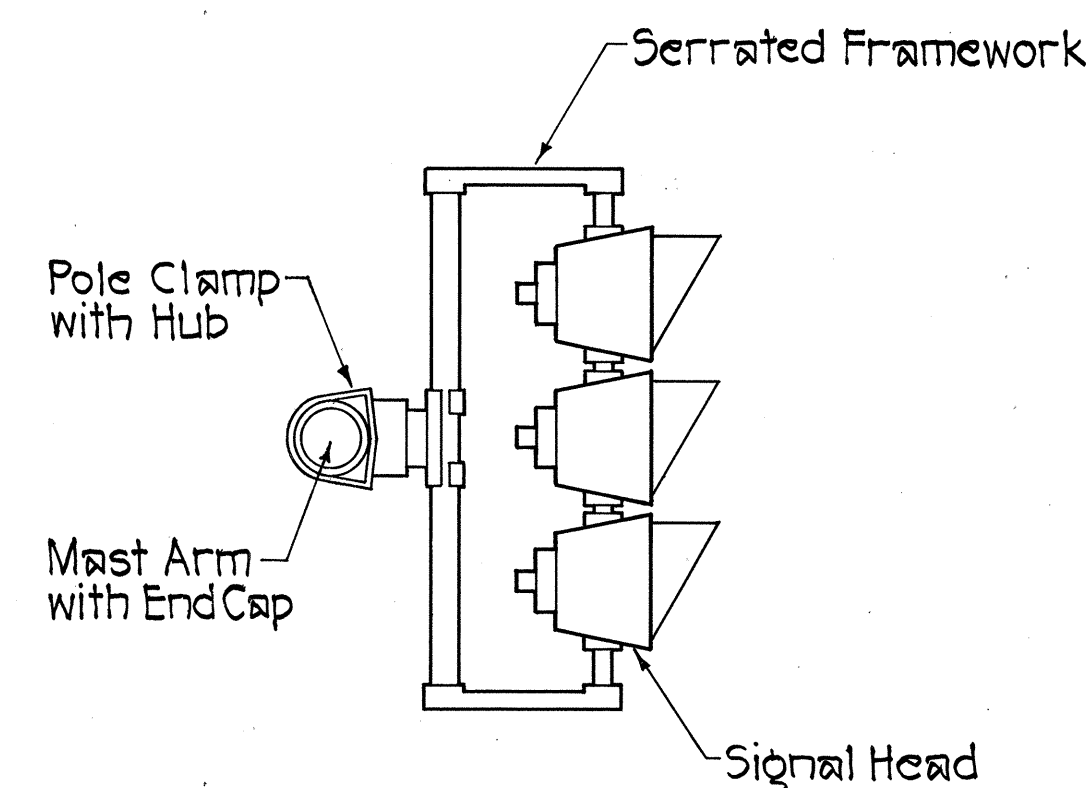
**TYPE I**  
POST TOP MOUNTING,  
ONE WAY



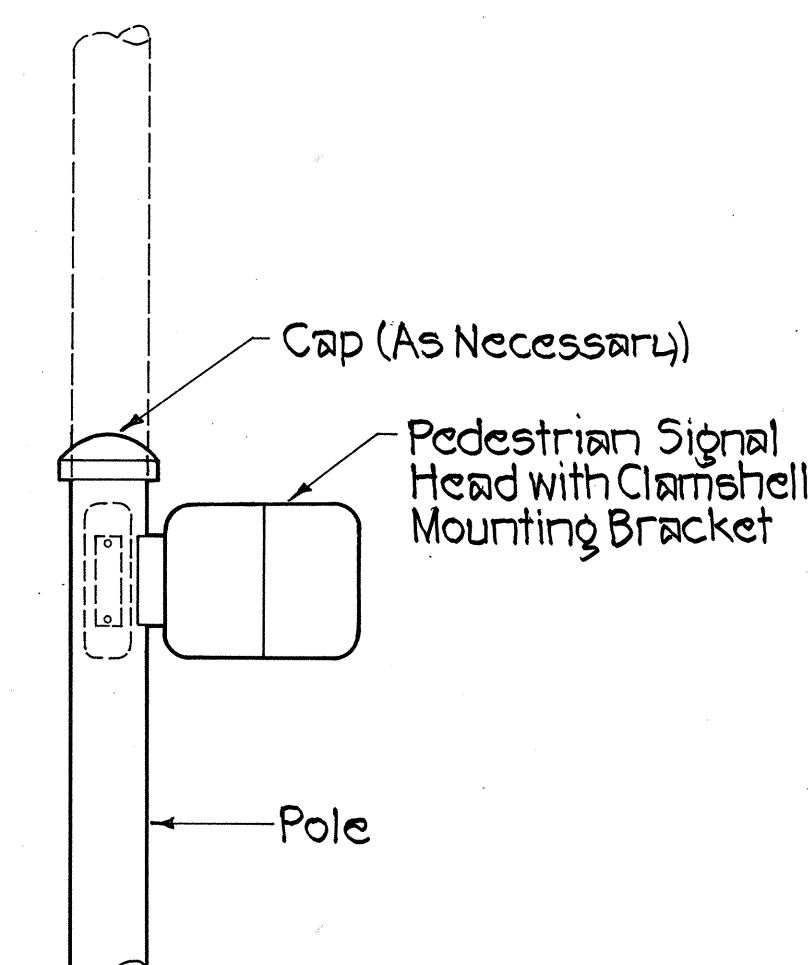
**TYPE II**  
POST TOP MOUNTING,  
TWO WAY



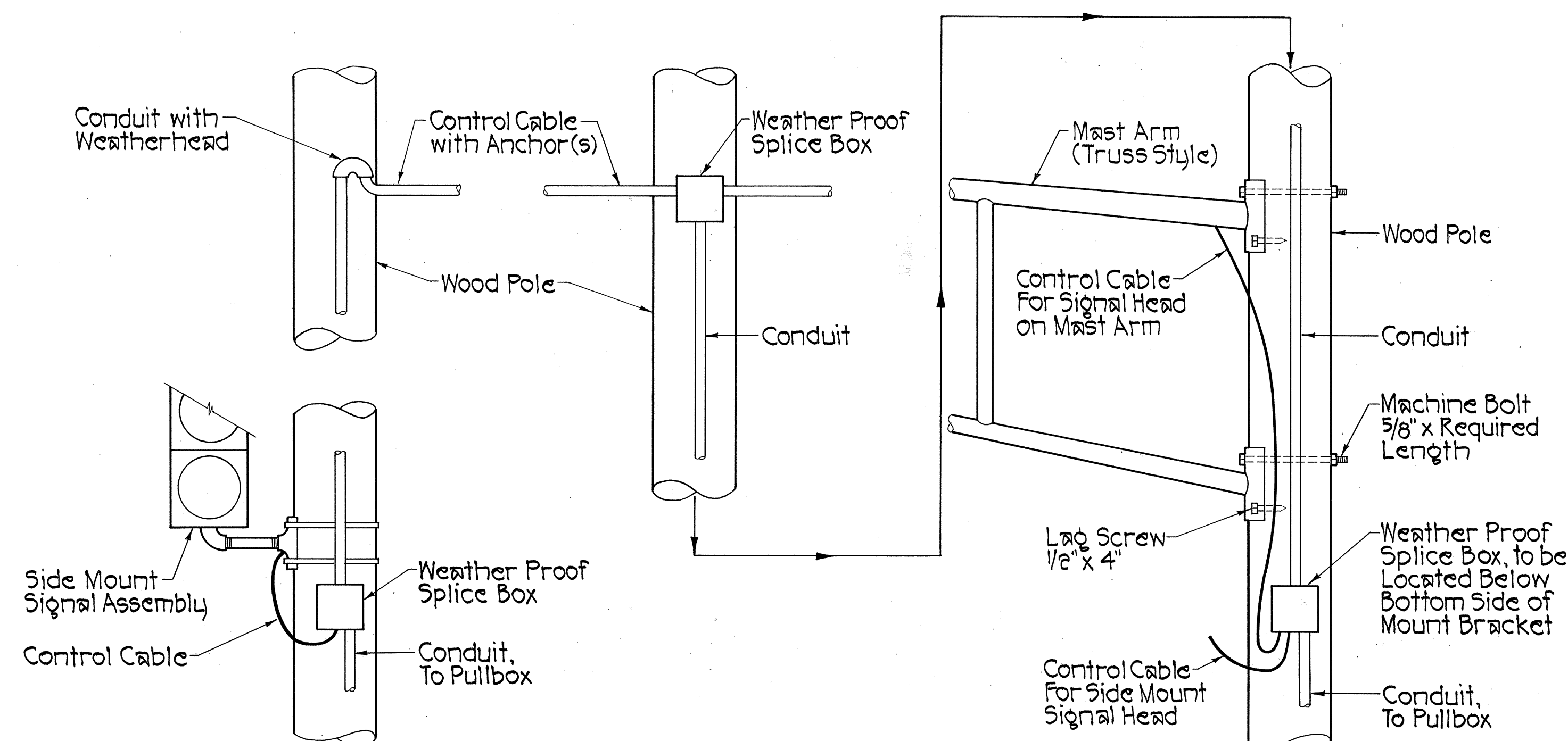
**TYPE V**  
SIDE POLE MOUNTING,  
ONE WAY  
WOOD AND METAL



**TYPE VI**  
MAST ARM MOUNTING



**TYPE VII**  
PEDESTRIAN SIGNAL  
HEAD MOUNTING



**WOOD POLE MOUNTINGS**  
MAST ARM AND CONTROL CABLE HARDWARE

**NOTES:**

1. All threaded items, i.e. bolts, fittings, screws, etc., shall be coated with an approved anti-seize compound prior to assembly or installation.
2. All circular signal heads (except Fiberoptic and Programmable) shall have approved glass lenses.

DATE	_____
SURVEY PLOTTED BY	_____
DRAWN BY	_____
DESIGNED BY	_____
QUANTITIES BY	_____
CHECKED BY	_____
ORIGINAL PLAN	_____
NOTE BOOK	_____
NO.	_____



THE WORK WAS PREPARED BY ME OR UNDER MY SUPERVISION.  
*Harold L. Yoshizaki*  
11236 12th Avenue  
Honolulu, Hawaii 96816

STATE OF HAWAII DEPARTMENT OF TRANSPORTATION HIGHWAYS DIVISION	
<b>SIGNAL HEAD MOUNT</b>	
QUEEN KAAHUMANU HIGHWAY TRAFFIC SIGNALS @ KAIMINANI DRIVE FEDERAL AID PROJECT NO STP-019-1(22)	
SCALE: AS SHOWN	DATE: May 1997
SHEET No. 1 OF 1 SHEETS	