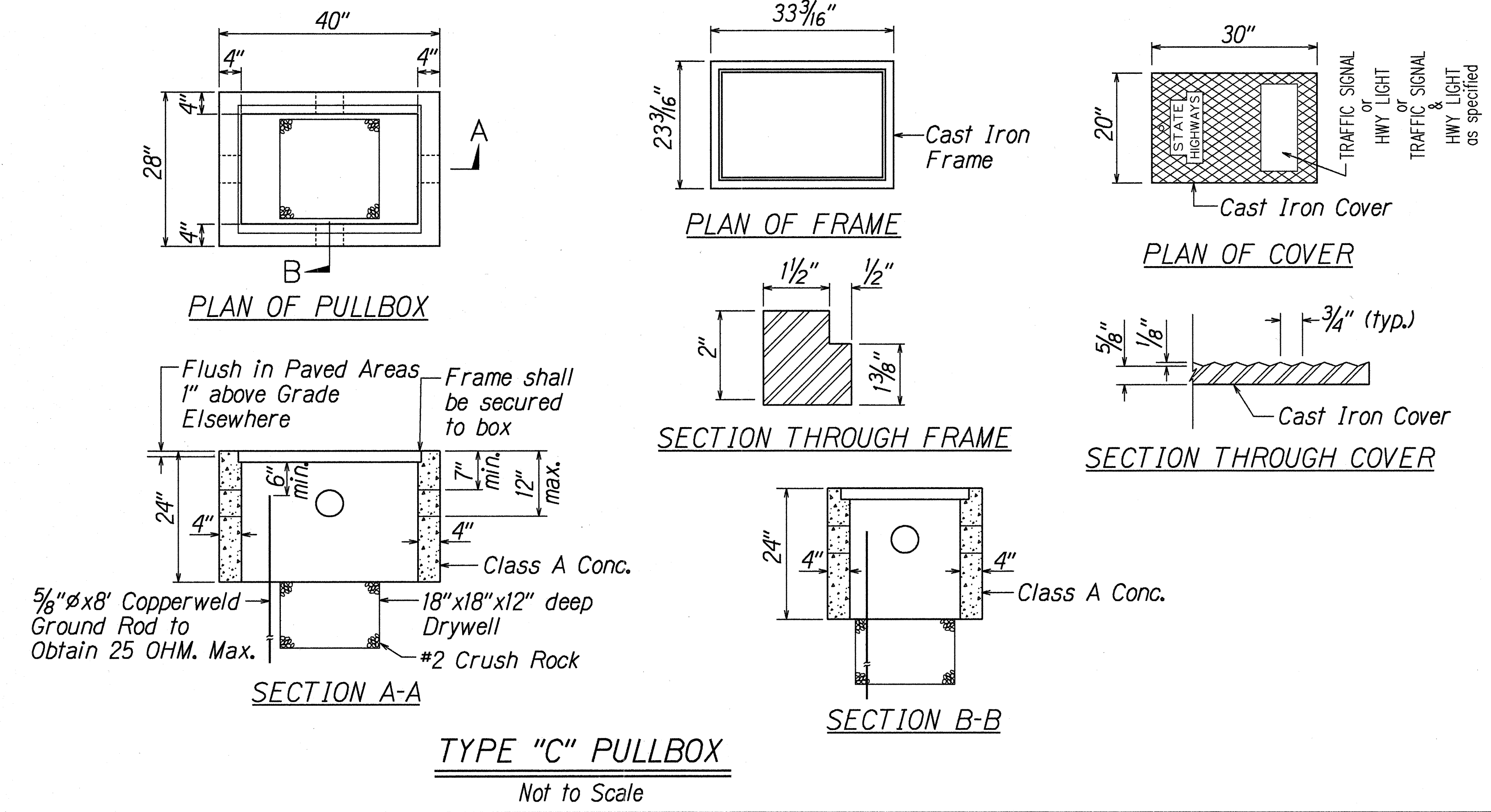
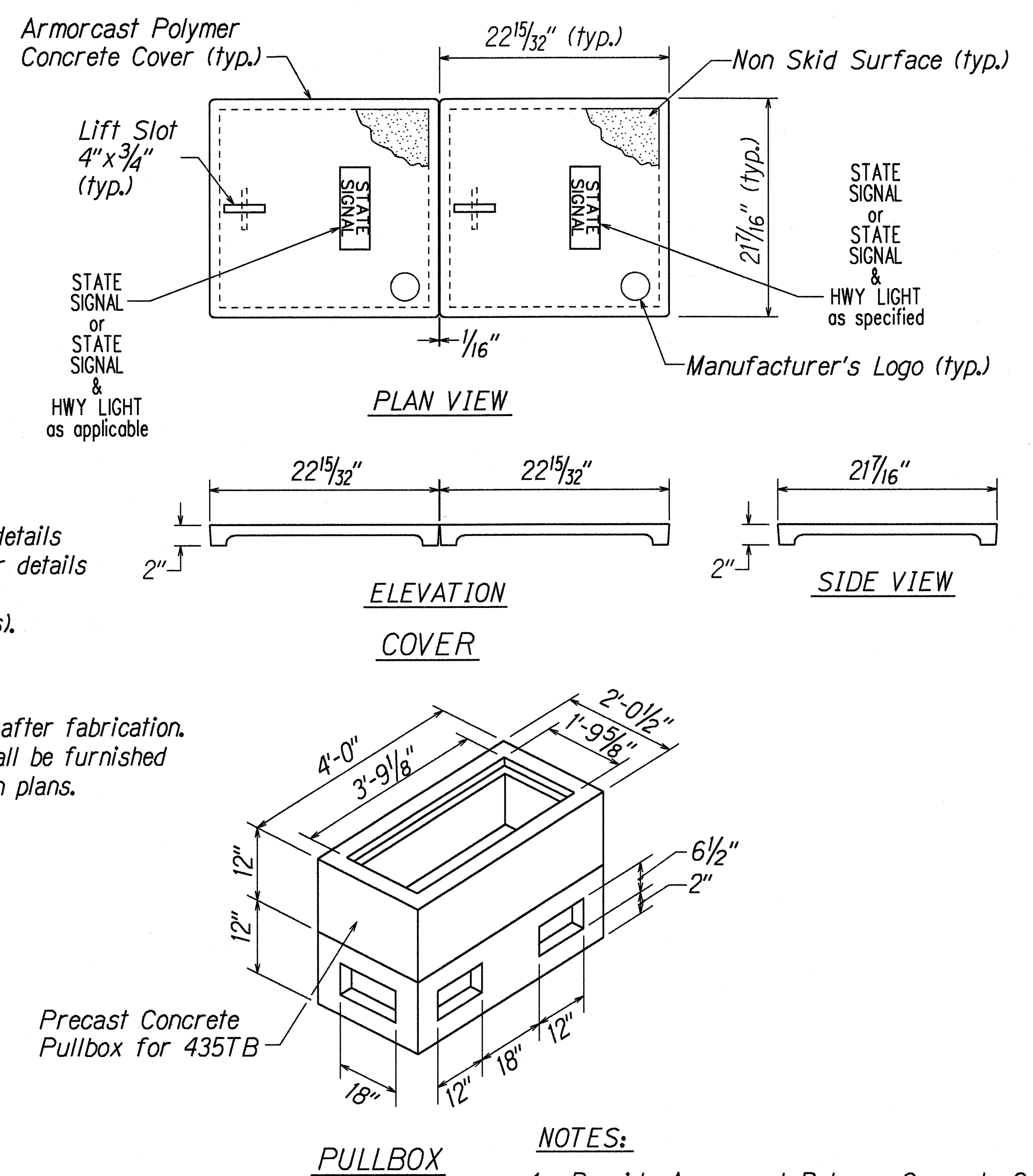
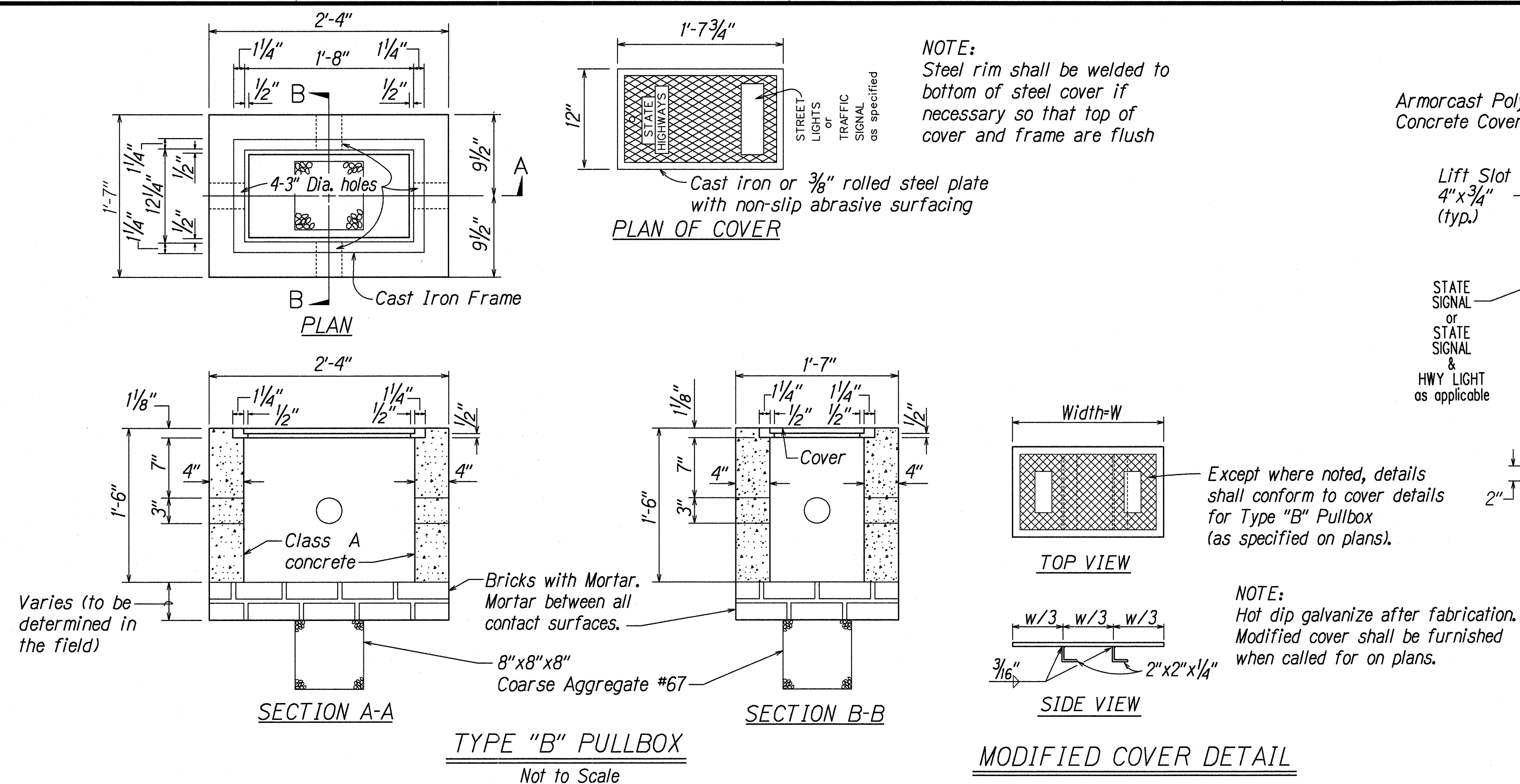


FED. ROAD DIST. NO.	STATE	PROJ. NO.	FISCAL YEAR	SHEET NO.	TOTAL SHEETS
HAWAII	HAW.	19B-01-97	1998	12	13



- NOTES:**
1. Provide Armorcast Polymer Concrete Cover.
 2. Install on 6" bed of #3 Crushed Rock.
 3. Provide sufficient amount of 5/8" x 8" Copperweld Ground Rods as directed by the Traffic Signal Inspector/Engineer. Cost shall be incidental to the various Traffic Signal Items.

STATE OF HAWAII

DEPARTMENT OF TRANSPORTATION

HIGHWAYS DIVISION

PULLBOX & COVER DETAILS

QUEEN KAAHUMANU HIGHWAY

Installation of Traffic Signals at

Kealahou Parkway

Project No. 19B-01-97

Scale: As Noted

Date: June, 1997

SHEET No. 6

OF 7

SHEETS

ORIGINAL PLAN	DATE
SURVEY PLOTTED BY	
DRAWN BY	
NOTED BY	
DESIGNED BY	
CHECKED BY	
IN CHARGE	

R4-1-97