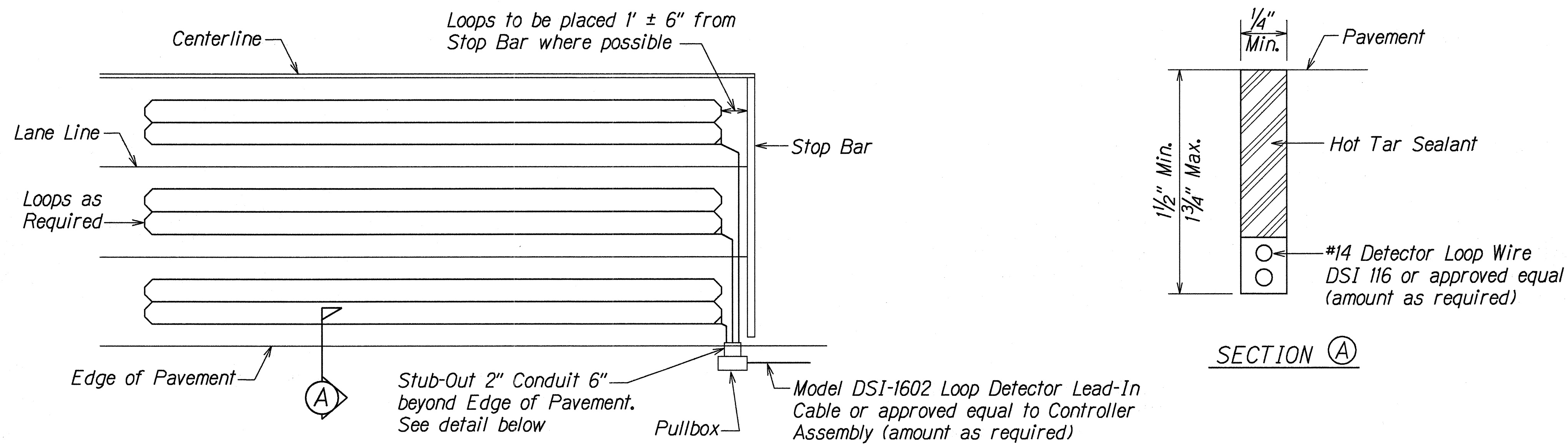
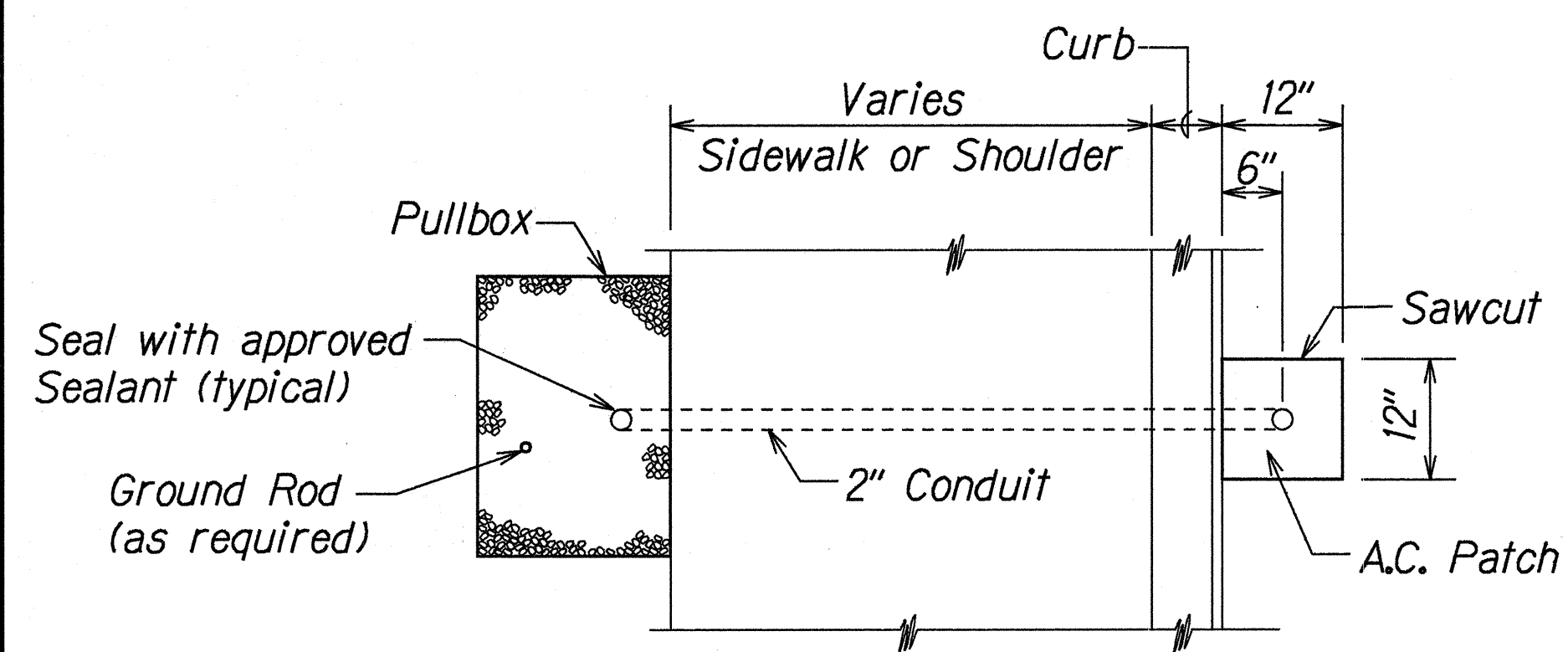


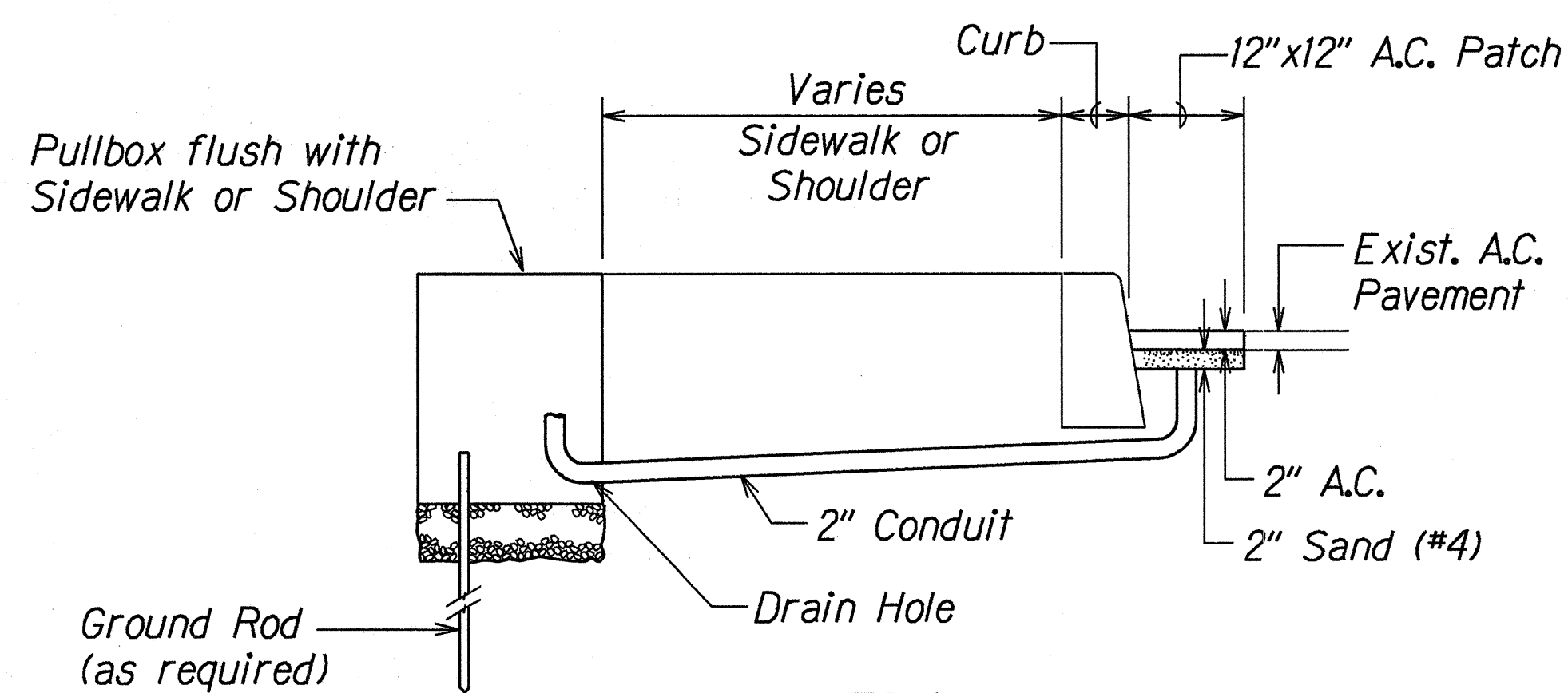
FED. ROAD DIST. NO.	STATE	PROJ. NO.	FISCAL YEAR	SHEET NO.	TOTAL SHEETS
HAWAII	HAW.	19B-01-97	1998	13	13



LOOP LAYOUT

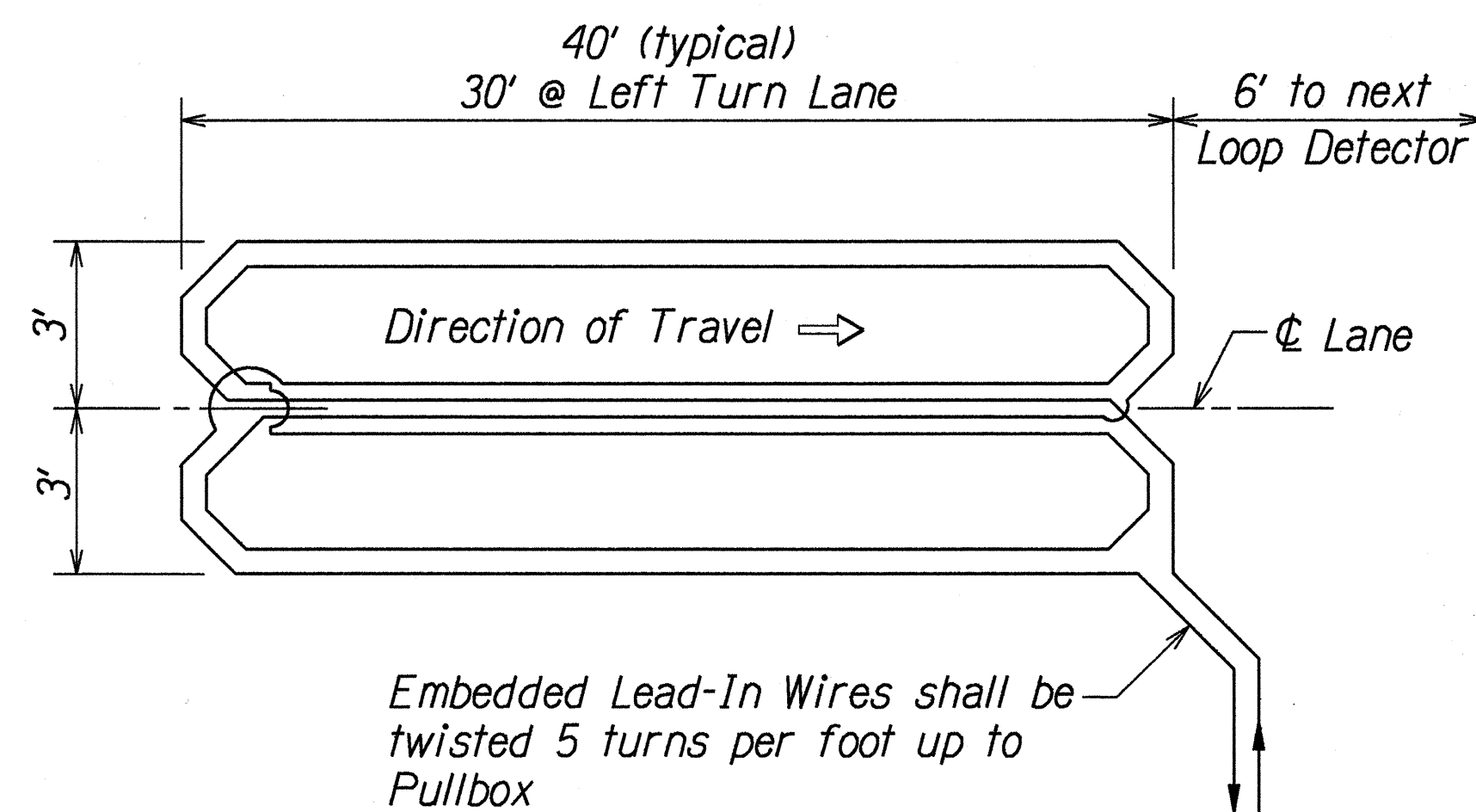


PLAN

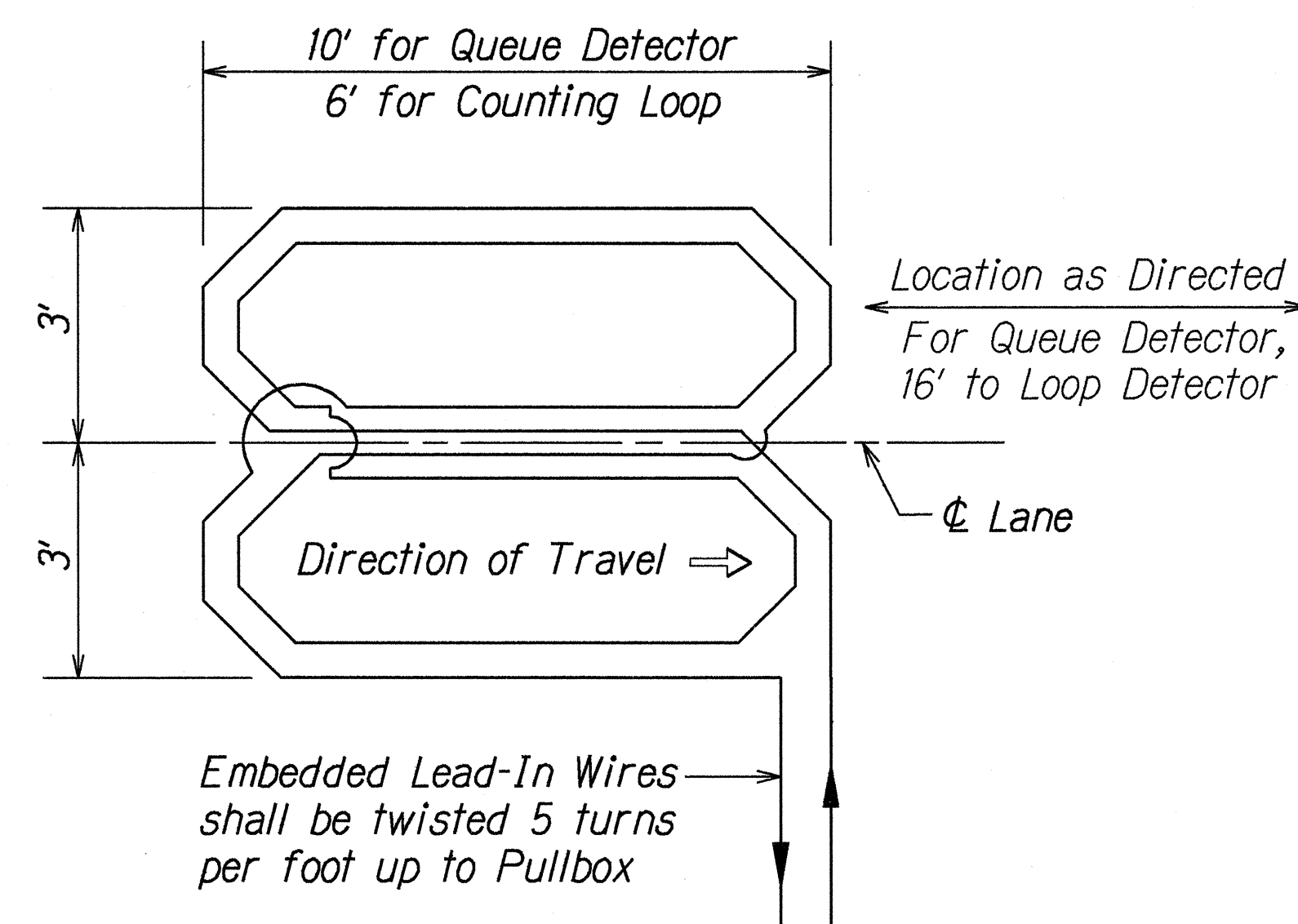


SECTION

LOOP DETECTOR STUB OUT



WIRING DIAGRAM



WIRING DIAGRAM - QUEUE/COUNTING DETECTORS

LOOP DETECTOR DETAILS

NOTES

1. If abandoned in place, all existing loop detectors shall be saw cut completely through every 10' to prevent inductive coupling.
2. All loop detector lead in cables shall be identified in the cabinet with it's appropriate loop detector assignment number per plans.
3. When hot sealants are used, only polyester insulation with a minimum 400° melting point will be permitted.

ORIGINAL PLAN	DATE	4/16/97
SURVEY PLOTTED BY		
DRAWN BY		
CHECKED BY		
NOTED BY		
DESIGNED BY		
QUANTITY BY		
CHECKED BY		
NO. 10/11/97		

STATE OF HAWAII
DEPARTMENT OF TRANSPORTATION
HIGHWAYS DIVISION

LOOP DETECTOR DETAILS
QUEEN KAAHUMANU HIGHWAY
Installation of Traffic Signals at
Kealahou Parkway
Project No. 19B-01-97

Scale: As Noted
Date: June, 1997

SHEET No. 7 OF 7 SHEETS