

FED. ROAD DIST. NO.	STATE	PROJ. NO.	FISCAL YEAR	SHEET NO.	TOTAL SHEETS
HAWAII	HAW.	19B-01-97	1998	10	13

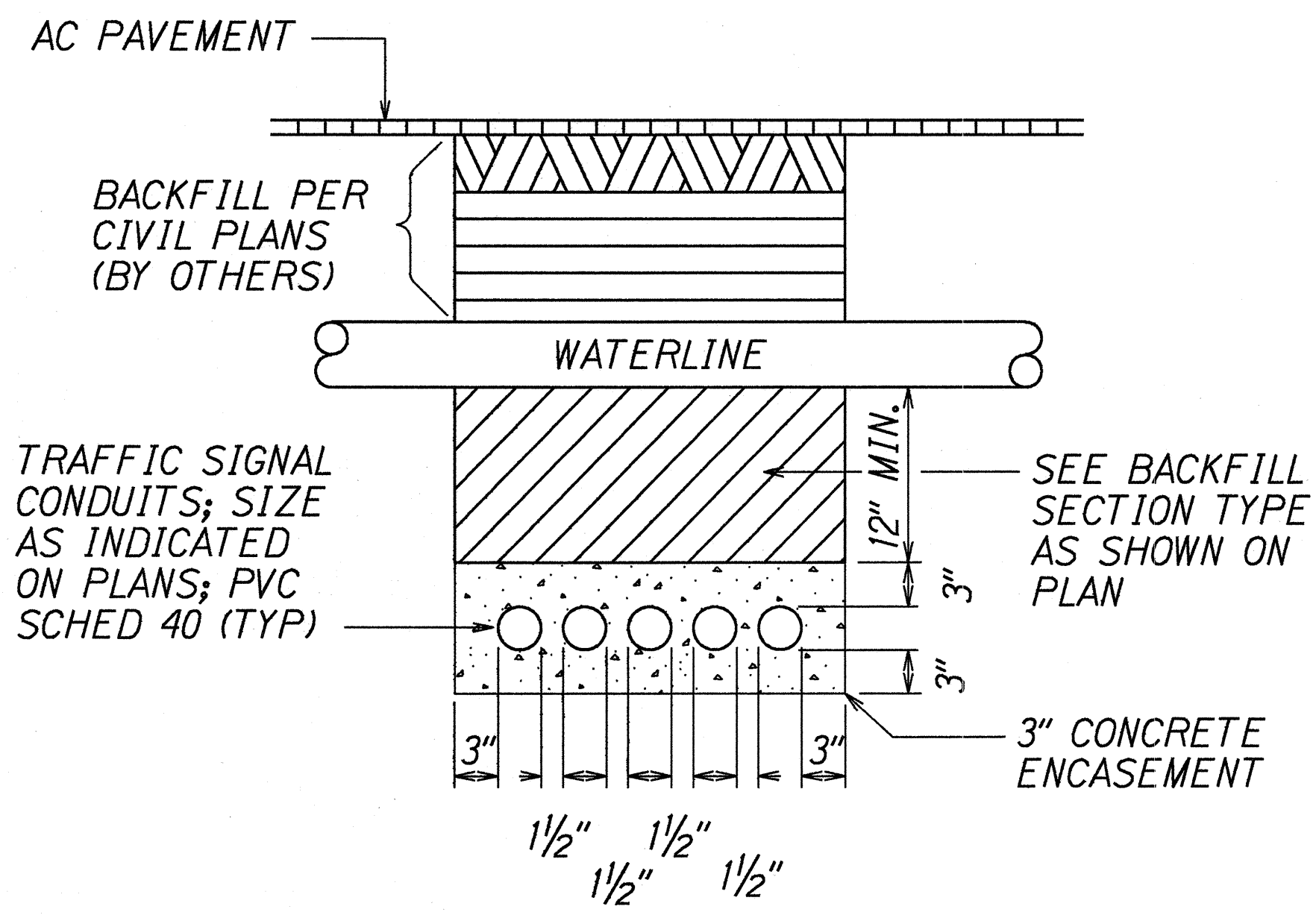
STATE RIGHT-OF-WAY BACKFILL NOTES

Trench Backfill Material "A"
Beach Sand, Earth, or Earth and Gravel if Earth and Gravel used, the maximum shall contain not more that 50% by volume of rock particles. Maximum 8 inches loose fill per lift. Obtain 95% compaction for each lift.

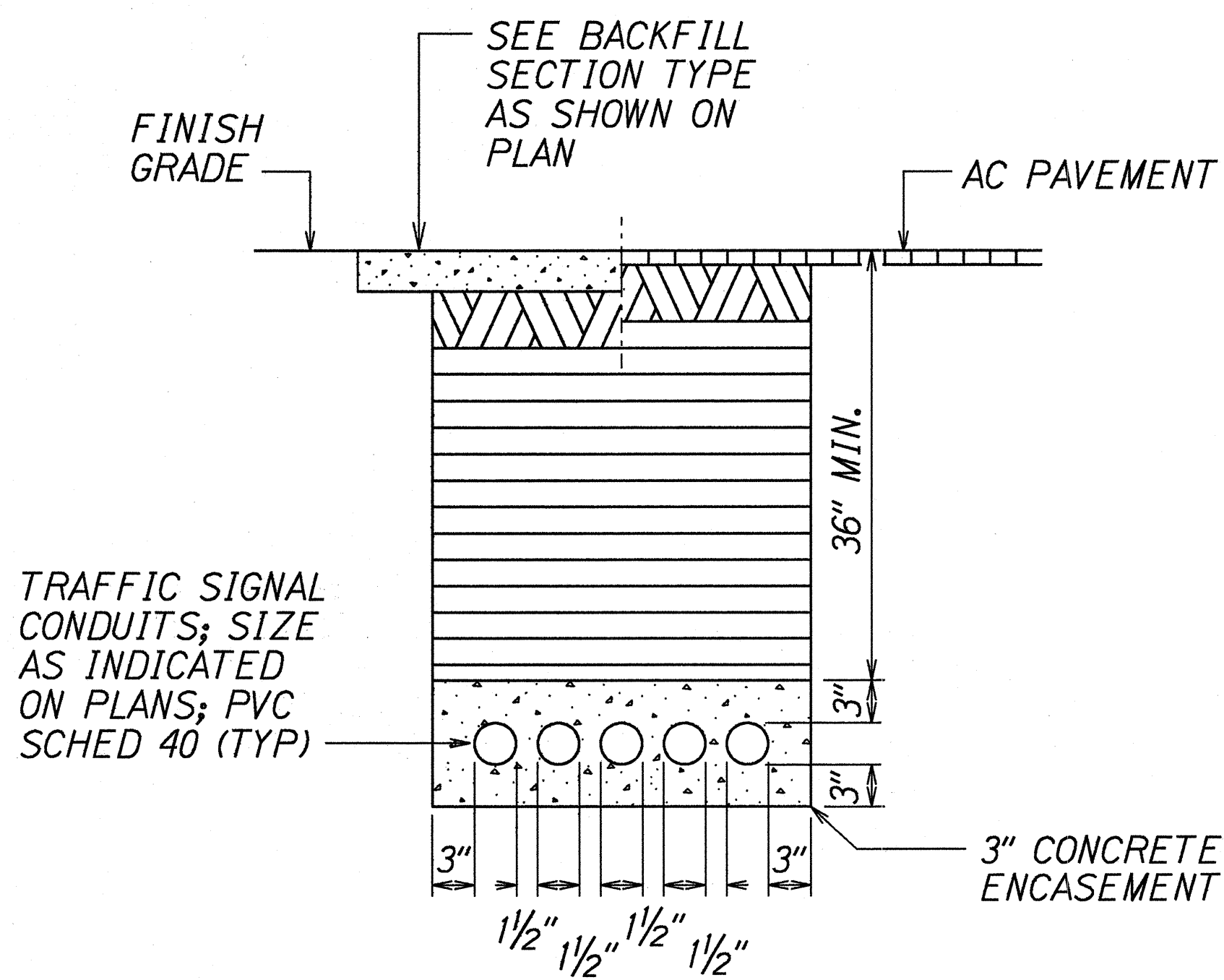
Concrete
3" Encasement, 2500 psi compressive strength @ 28 days.

GENERAL NOTES:

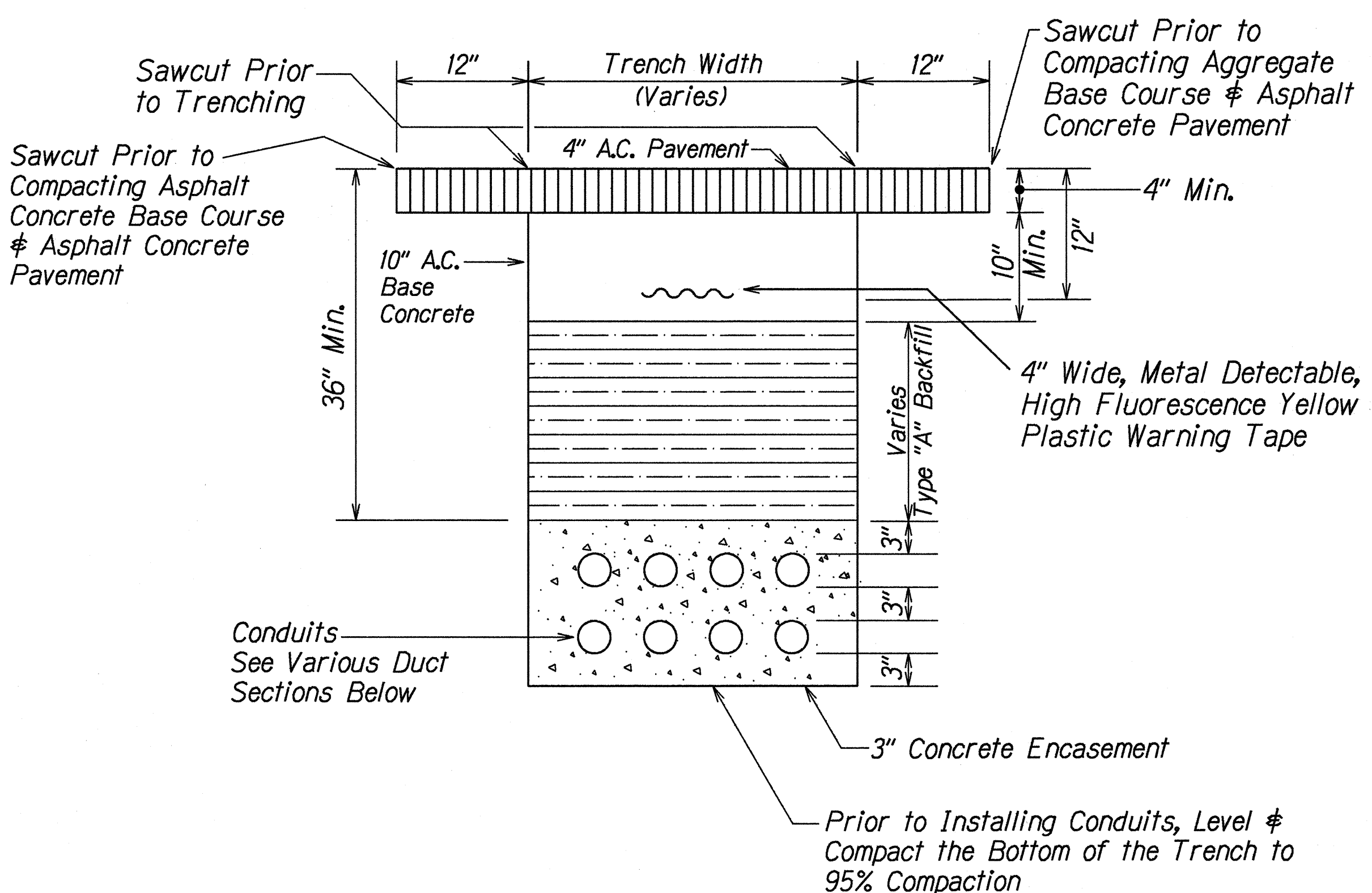
- Asphalt Concrete (A.C.) Pavement and Asphalt Concrete (A.C.) Base Course to match existing thickness or the minimum thickness shown, whichever is greater.
- If trench is located on unpaved area, the Contractor shall replace 10" A.C. Base Course and 4" A.C. Pavement with Type "A" backfill material.
- The Metal Detectable High Fluorescence Yellow Plastic Warning Tape shall be a minimum 5 mils thick and 4 inches wide with a continuous metallic backing and corrosion resistant 1 mil thick foil core. The tape shall read, "CAUTION - STATE TRAFFIC SIGNAL AND/OR HWY LIGHTING BURIED BELOW," utilizing 3 inch series "C" lettering. The message will be repeated with a 12-inch spacing between the end and beginning of repeated message.



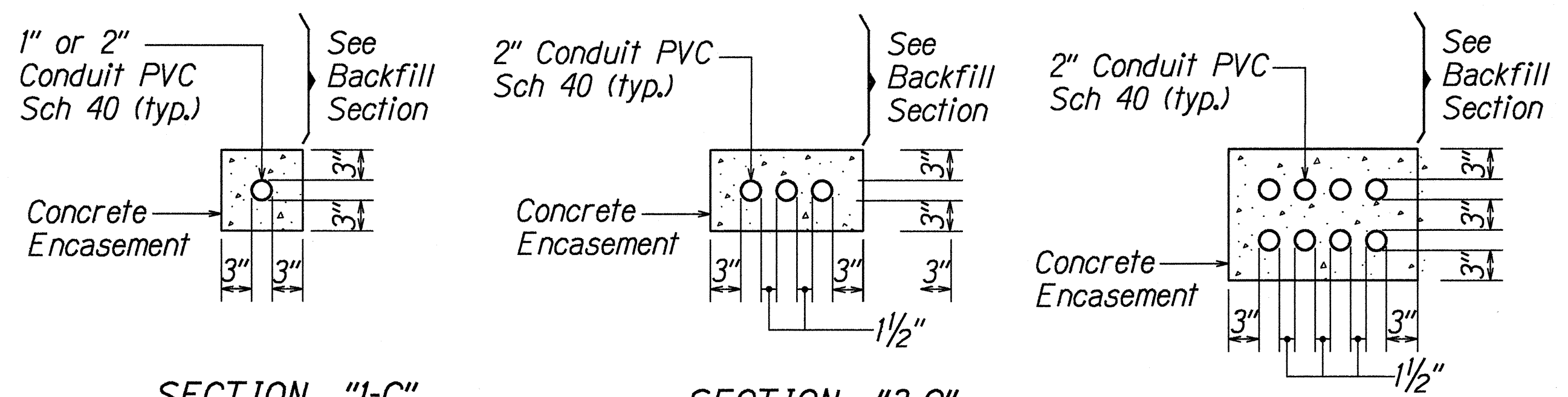
DUCT SECTION "Y"
Not to Scale



DUCT SECTION "X"
Not to Scale



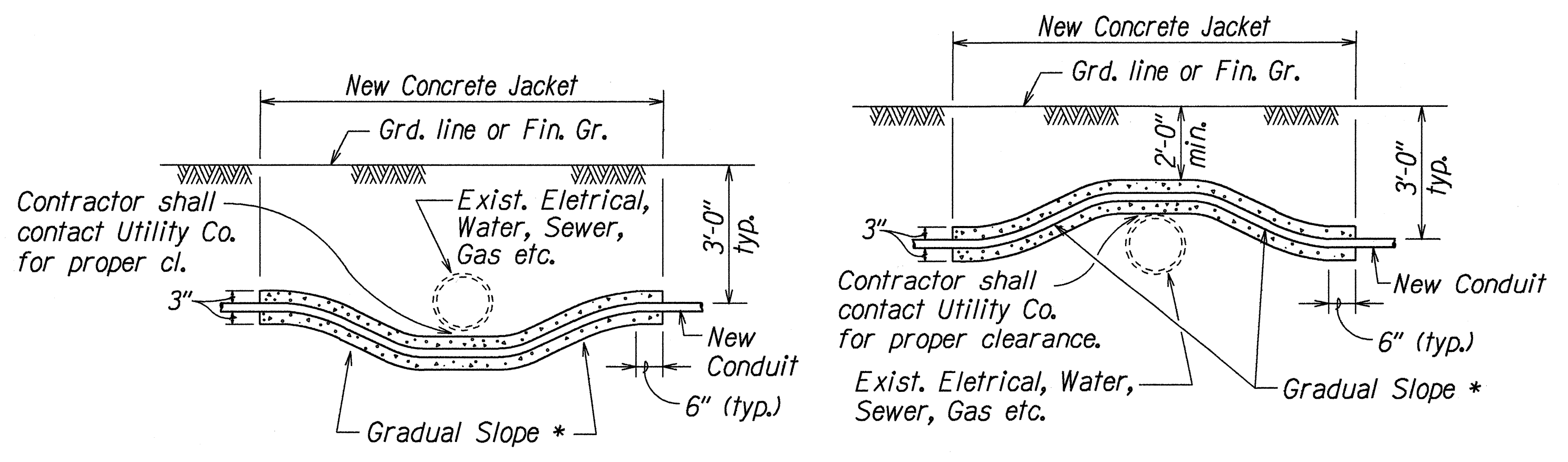
TYPICAL BACKFILL SECTION
Within State-Right-Way



SECTION "1-C"
Not to Scale

SECTION "3-C"
Not to Scale

SECTION "8-C"
Not to Scale



* To be determined by County Electrical Inspector/Engineer

CONDUIT BY-PASS DETAIL AT VARIOUS UTILITIES
Not to Scale

STATE OF HAWAII

DEPARTMENT OF TRANSPORTATION

HIGHWAYS DIVISION

ELECTRICAL DETAILS

QUEEN KAAHUMANU HIGHWAY

Installation of Traffic Signals at

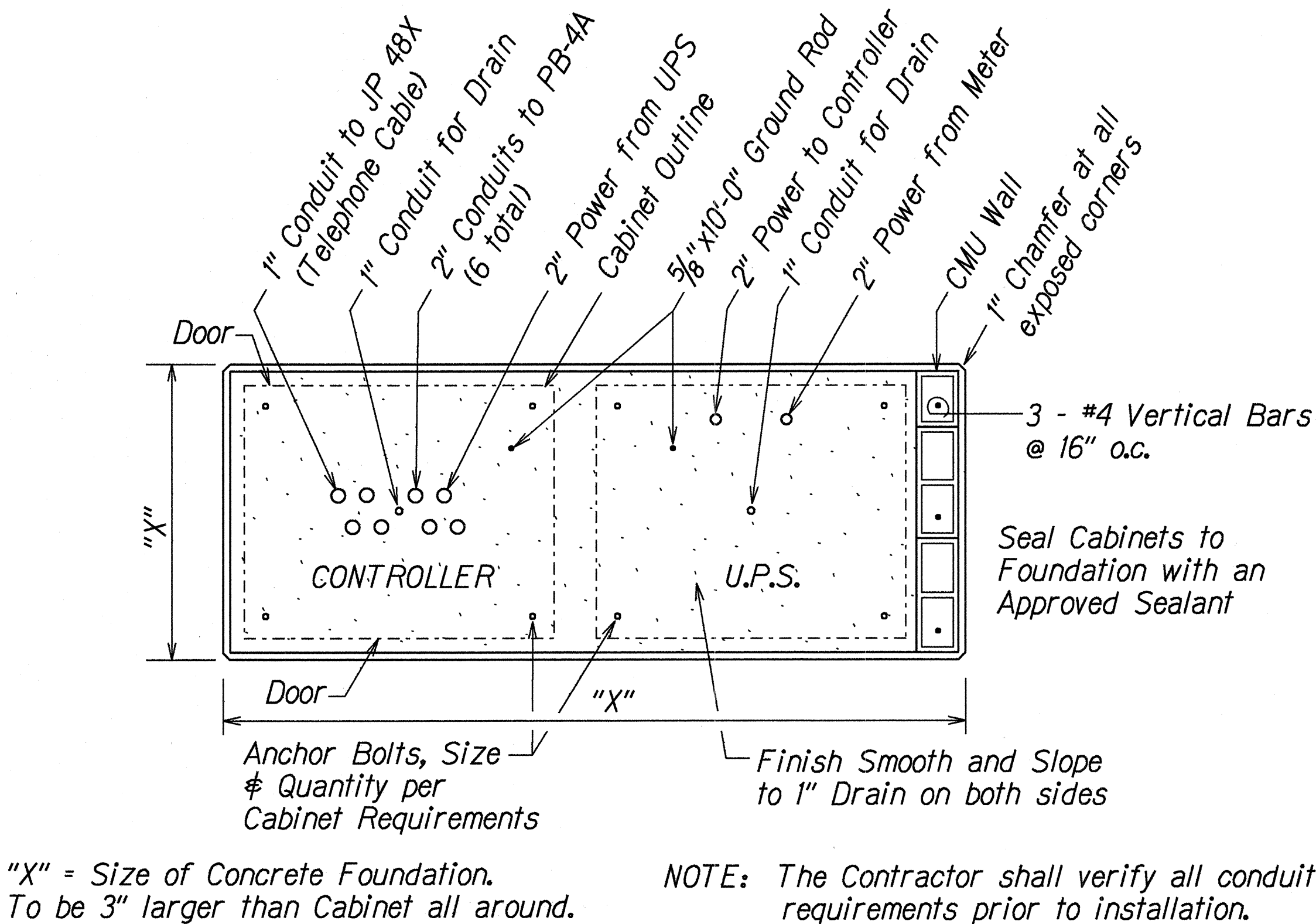
Kealahou Parkway

Project No. 19B-01-97

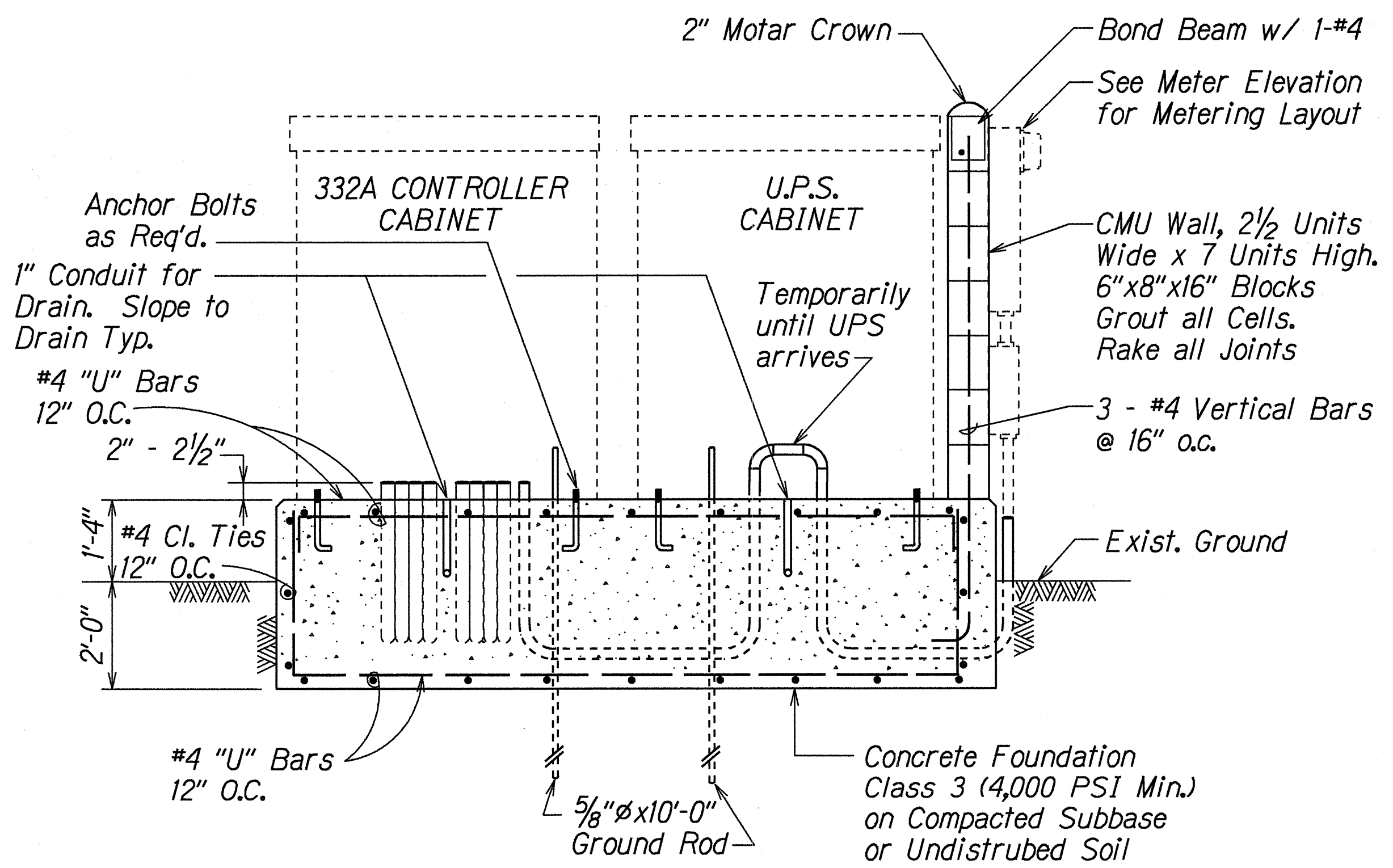
Scale: As Noted

Date: June, 1997

FED. ROAD DIST. NO.	STATE	PROJ. NO.	FISCAL YEAR	SHEET NO.	TOTAL SHEETS
HAWAII	HAW.	19B-01-97	1998	11	13

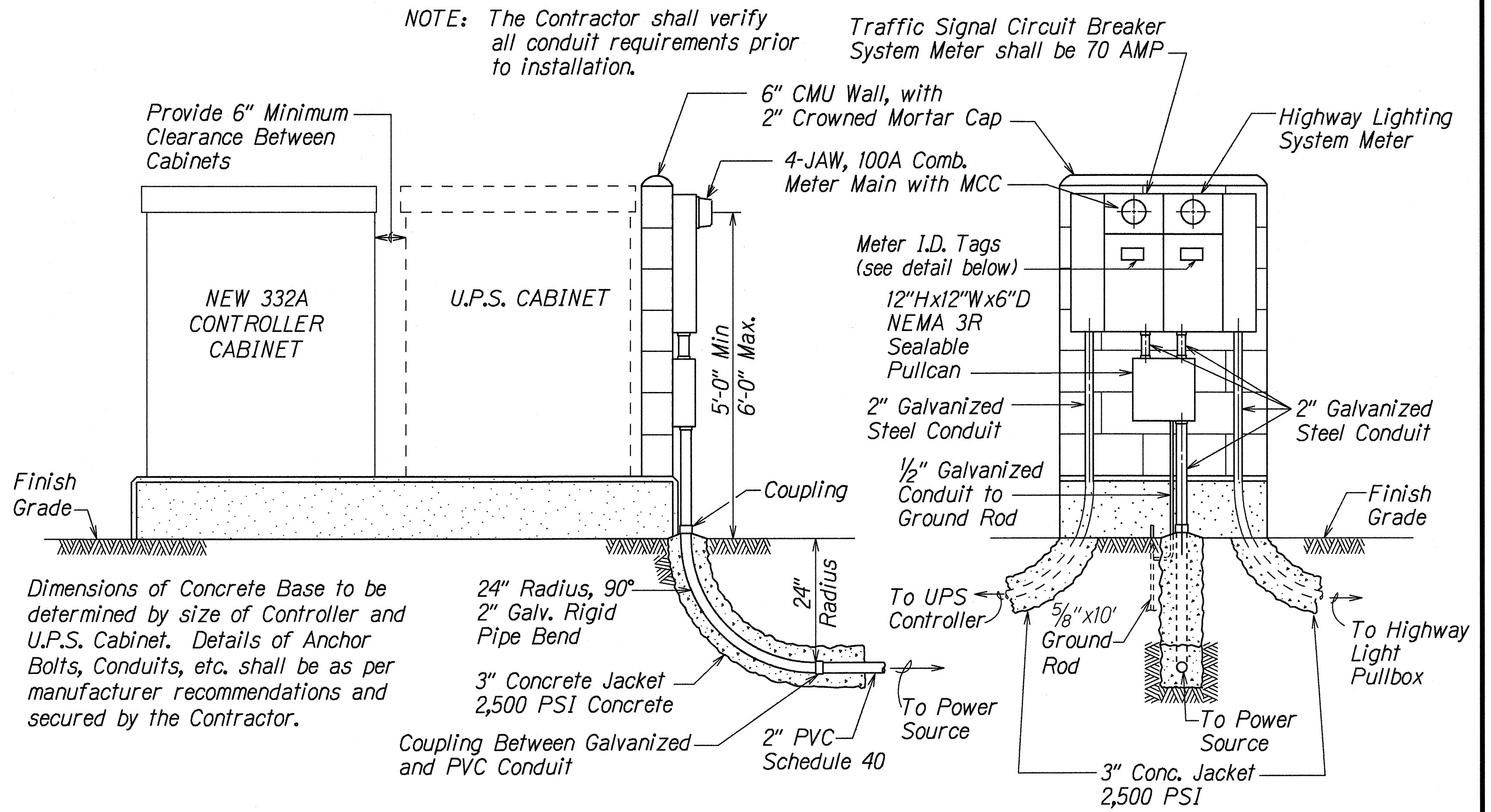


PLAN

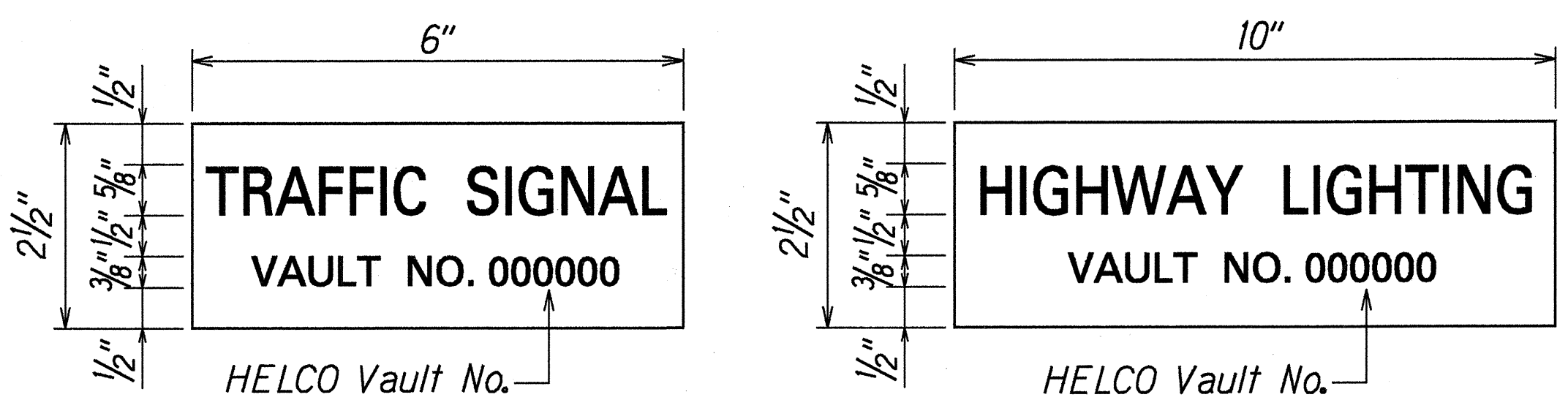


SECTION

UNINTERRUPTED POWER SUPPLY (UPS) UNIT &
CONTROLLER CABINET FOUNDATION
Not to Scale



METER ELEVATION



METER ID TAG DETAIL
N.T.S

- NOTES:
1. Use 3-ply laminated flexible plastic, black-white-black thickness: black cap sheet - 0.010", white base sheet - 0.052", black base sheet - 0.010".
 2. Attach to Meter Socket using Scotch 3M Brand very high bond (VHB) double coated acrylic foam tape or equivalent.
 3. Letters/Numbers shall be 5/8" & 3/8" high, 1/16" wide stroke, (white in color).
 4. Letters/Numbers area inscribed by cutting through "black cap sheet" to expose white letters/numbers.

STATE OF HAWAII
DEPARTMENT OF TRANSPORTATION
HIGHWAYS DIVISION

ELECTRICAL DETAILS
QUEEN KAAHUMANU HIGHWAY
Installation of Traffic Signals at
Kealahou Parkway
Project No. 19B-01-97
Scale: As Noted Date: June, 1997

DATE	4/11/97
SURVEY PLOTTED BY	...
DRAWN BY	...
DESIGNED BY	...
CHECKED BY	...
ORIGINAL PLAN	...
NOTE BOOK	...
FOR REVIEW	...
CHECKED BY	...