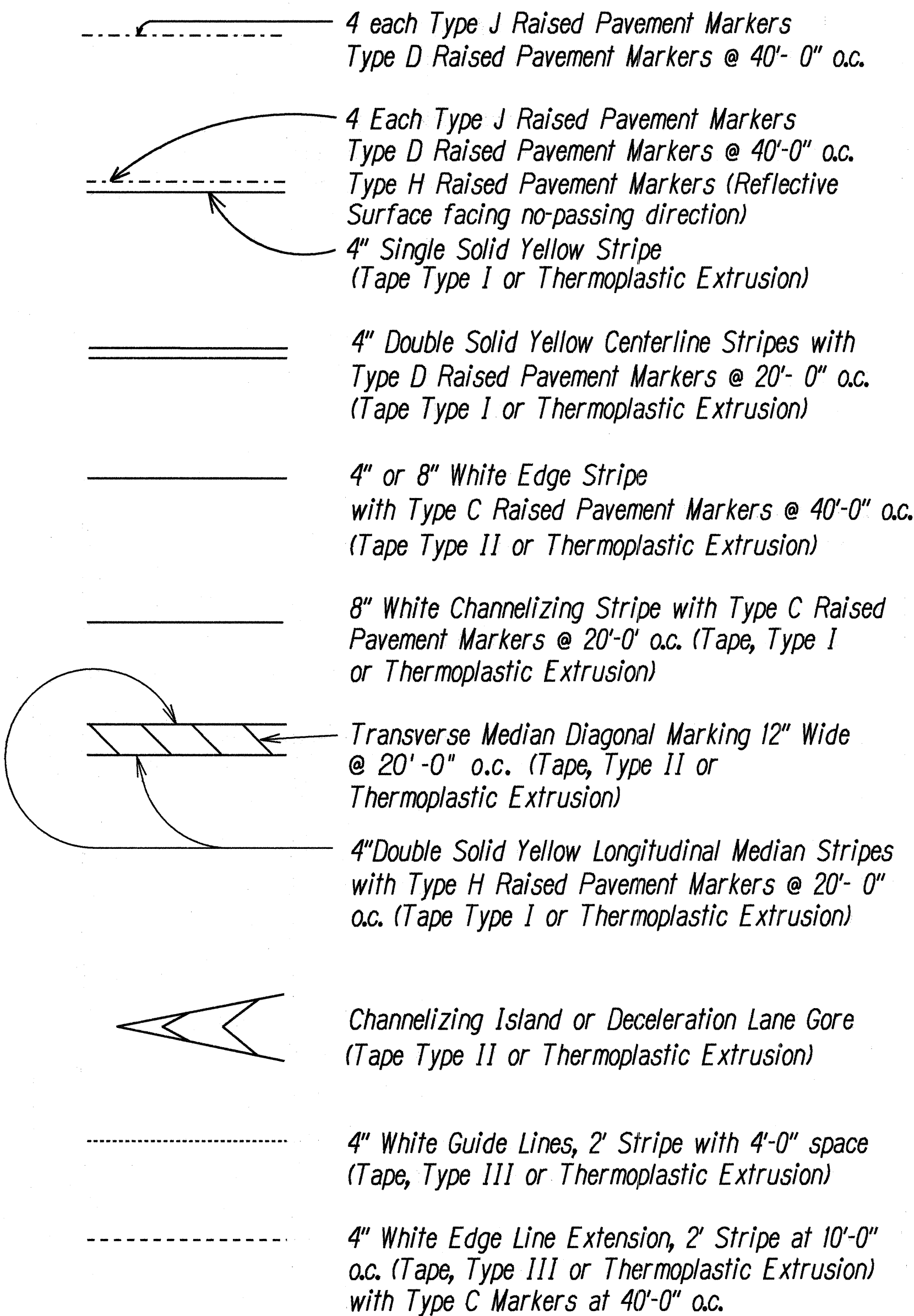
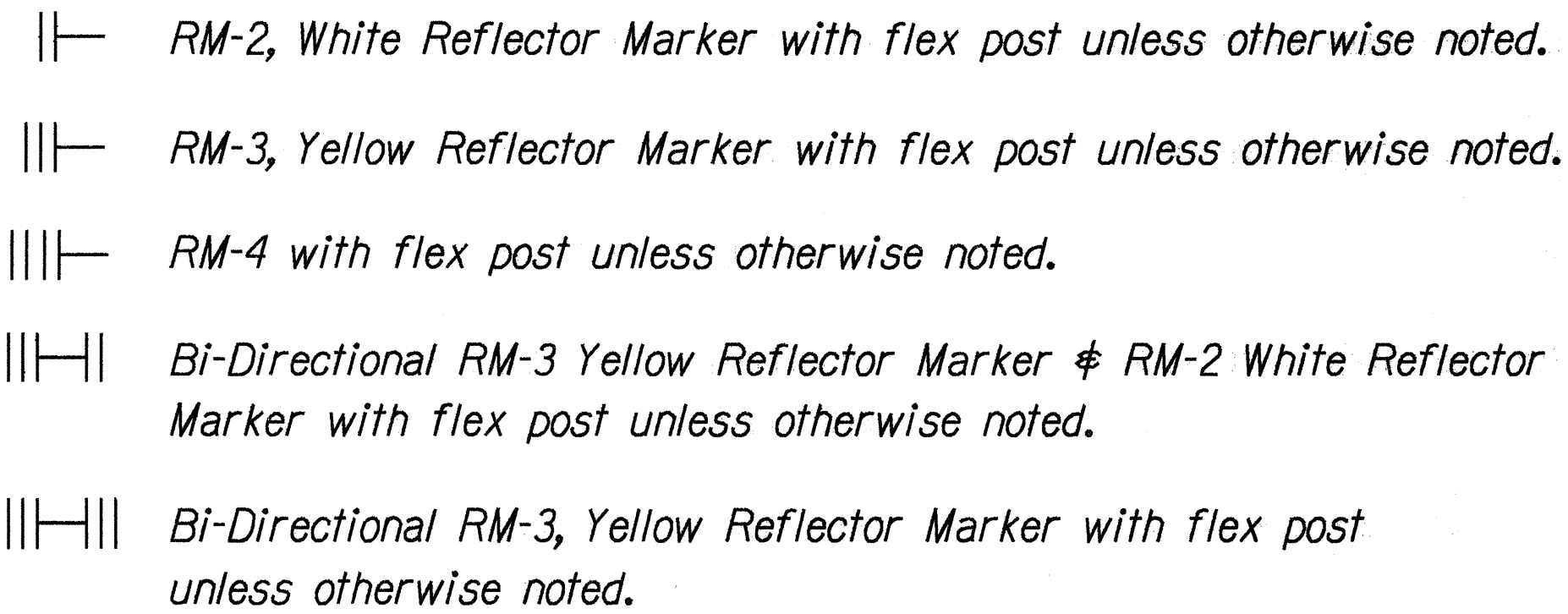


FED. ROAD DIST.	STATE	PROJ. NO.	FISCAL YEAR	SHEET NO.	TOTAL SHEETS
HAWAII	HAW.	19F-01-97M	1997	6	42

LEGEND

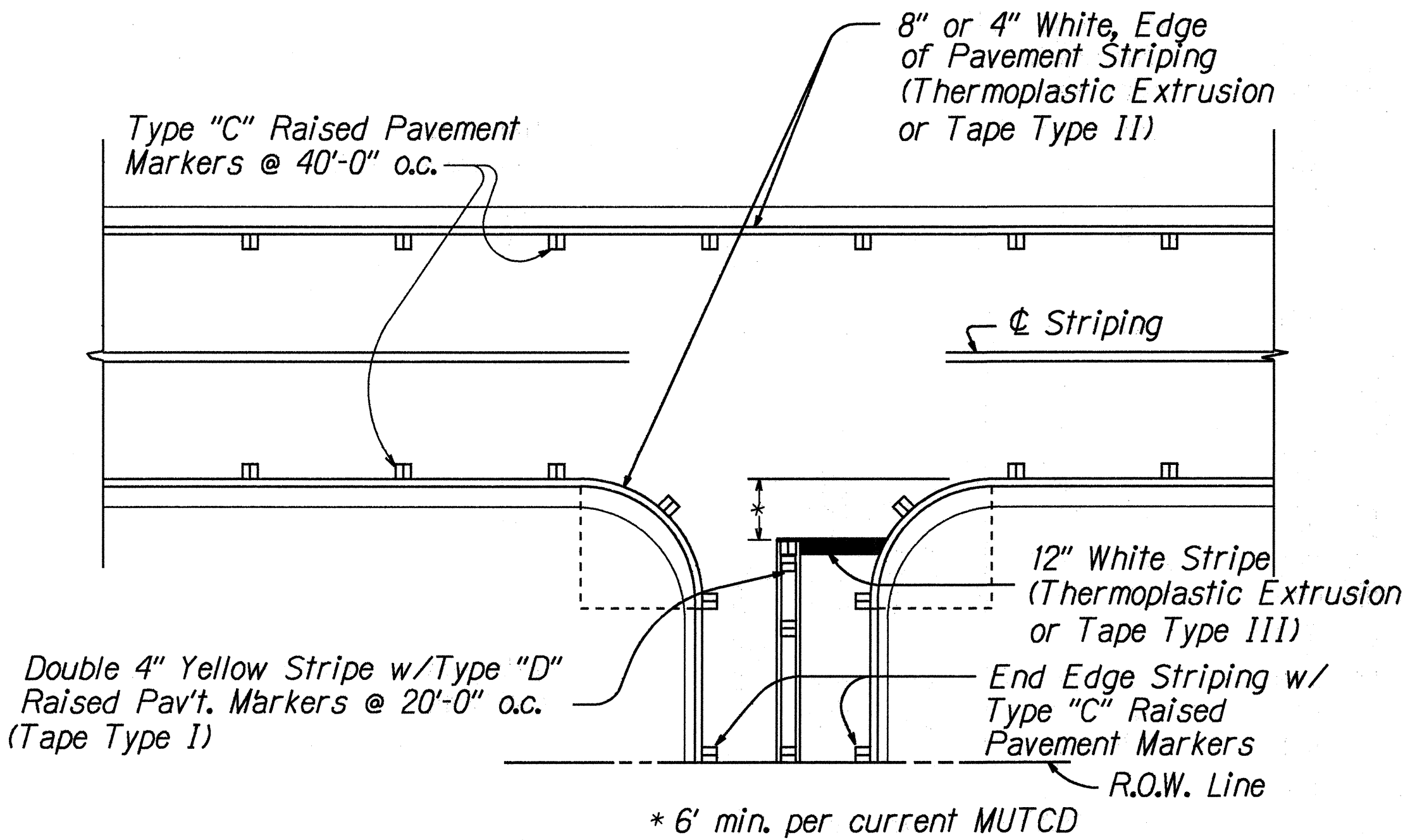


REFLECTOR MARKER LEGEND



NOTES

- Layout of pavement markings and striping shall be done by the Contractor and approved by the Engineer prior to any installation work.
- Existing pavement markings not incorporated in the final traffic pattern shall be removed as directed by the Engineer. Costs shall be incidental to the various pavement marking items.
- Raised pavement markers shall not be installed within crosswalks.
- Final locations of all Stop Lines shall be approved by the Engineer prior to installation.
- All pavement striping and markings shall be as noted on the Legend or plans, or as directed by the Engineer and shall conform to State standards.
- All preformed pavement marking tapes over existing pavement shall be applied with an approved primer as recommended by the tape manufacturer and as approved by the Engineer. The primer shall be allowed to dry to the tacky stage prior to tape application.



TYPICAL EDGE OF PAVEMENT MARKING
Not to Scale

STATE OF HAWAII
DEPARTMENT OF TRANSPORTATION
HIGHWAYS DIVISION

PAVEMENT MARKING
LEGEND AND NOTES
HAWAII BELT ROAD RESURFACING
MUD LANE TO HONOKA'A
PROJECT NO. 19F-01-97M

Scale: None
Date: April, 1997

SHEET No. 1 OF 1 SHEETS

ORIGINAL PLAN	DATE
SURVEY PLOTTED BY	
DRAWN BY	
DESIGNED BY	
CHECKED BY	
APPROVED BY	