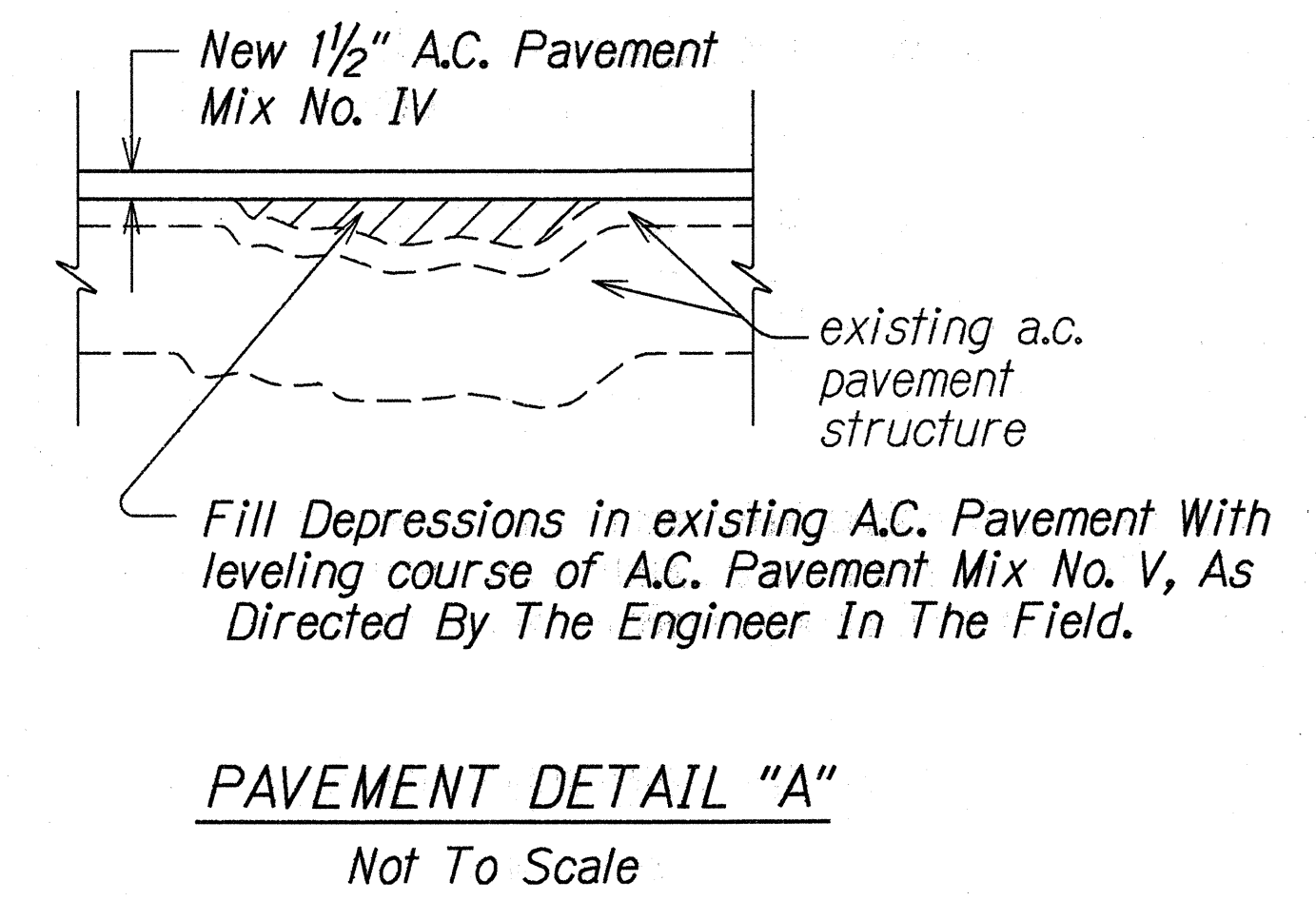
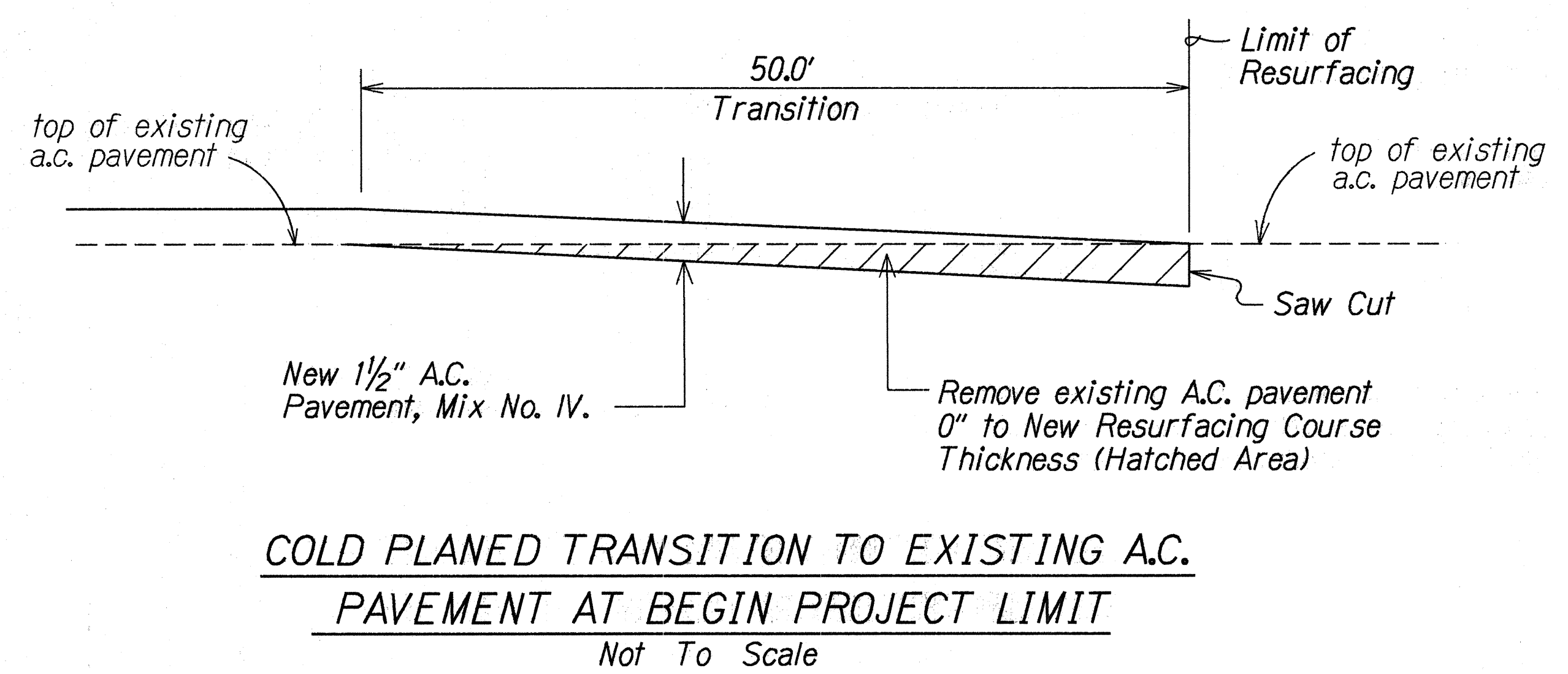
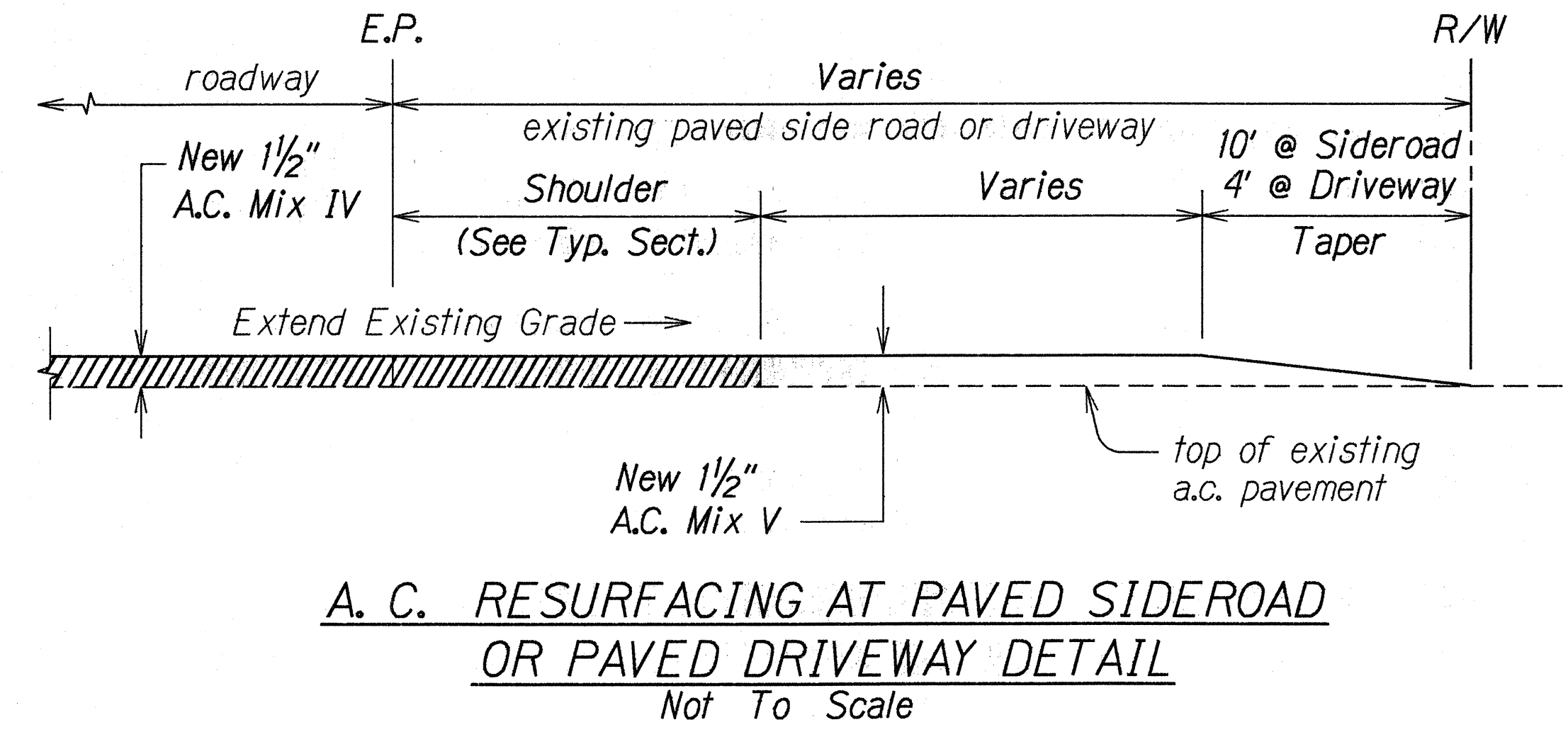
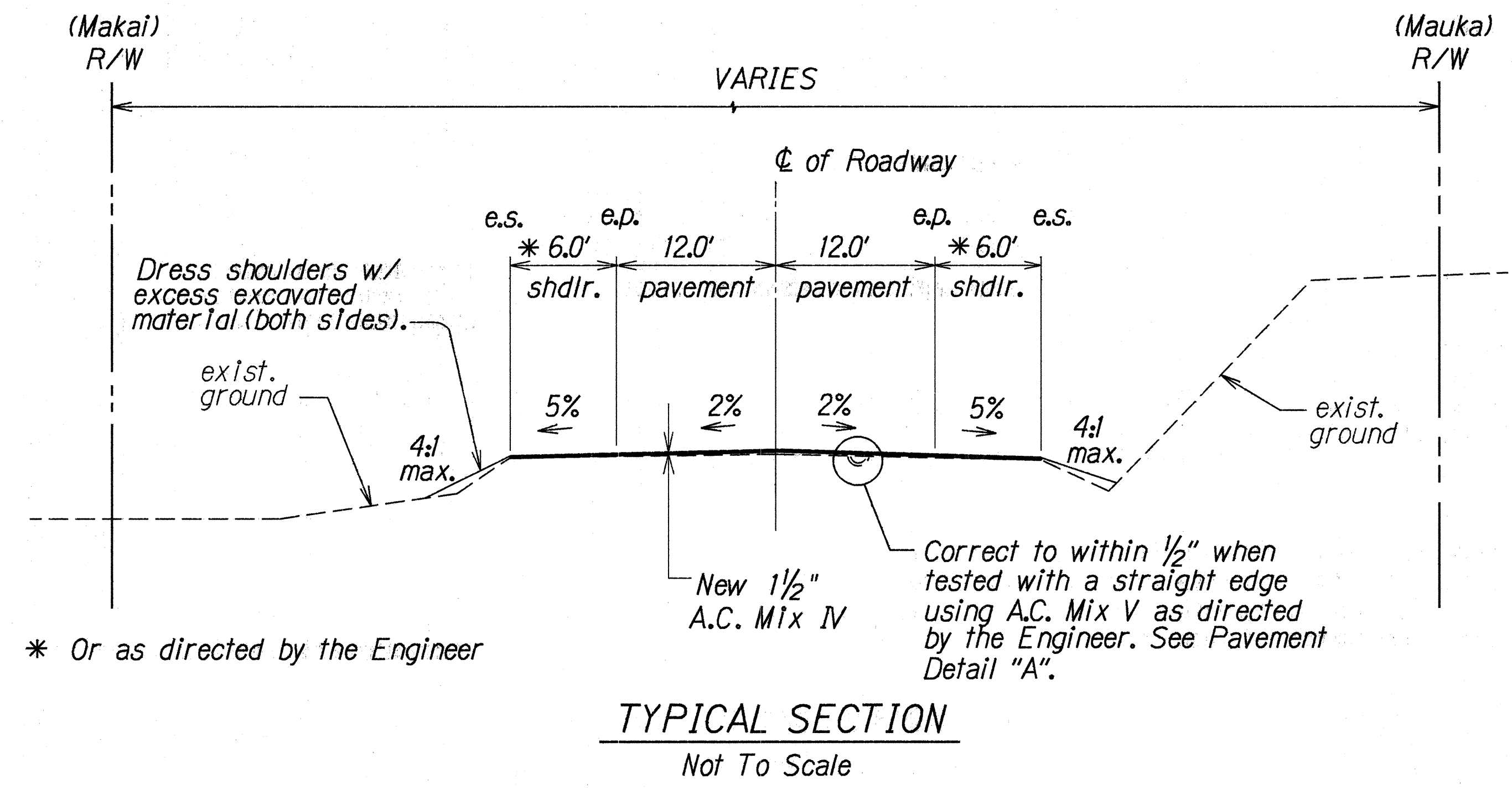


| FED. ROAD DIST. NO. | STATE | PROJ. NO. | FISCAL YEAR | SHEET NO. | TOTAL SHEETS |
|---------------------|-------|------------|-------------|-----------|--------------|
| HAWAII | HAW. | 19J-02-97M | 1997 | 4 | 22 |



| | |
|---------------|------|
| DESIGNED BY | DATE |
| TRACED BY | |
| DESIGNED BY | |
| QUANTITIES BY | |
| CHECKED BY | |
| ORIGINAL | |
| NOTE BOOK | |
| No. | |

STATE OF HAWAII
DEPARTMENT OF TRANSPORTATION
HIGHWAYS DIVISION

TYPICAL SECTION

HAWAII BELT ROAD RESURFACING
PEPE'EKEO TO KOLEKOLE
PROJECT NO. 19J-02-97M

Scale: As Shown
Date: Dec., 1996

SHEET No. 1 OF 1 SHEETS