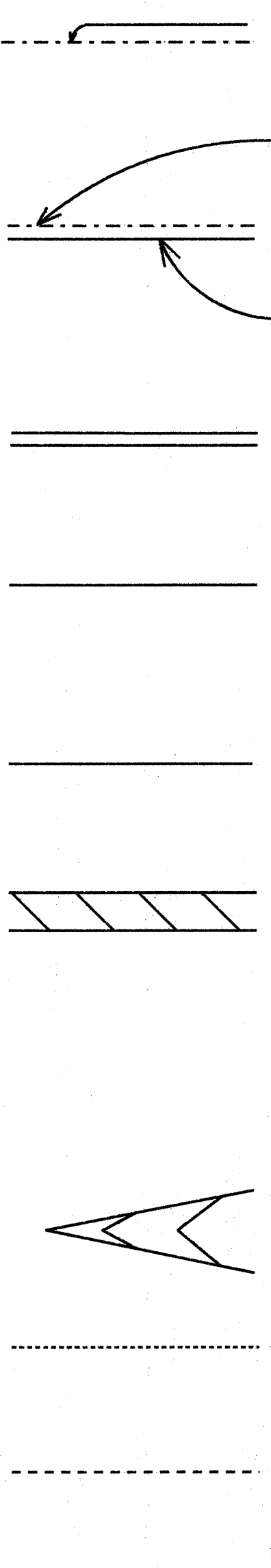
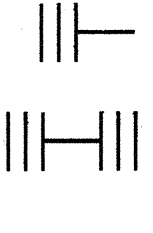


FED. ROAD DIST. NO.	STATE	PROJ. NO.	FISCAL YEAR	SHEET NO.	TOTAL SHEETS
HAWAII	HAW.	19J-02-97M	1997	15	22

LEGEND

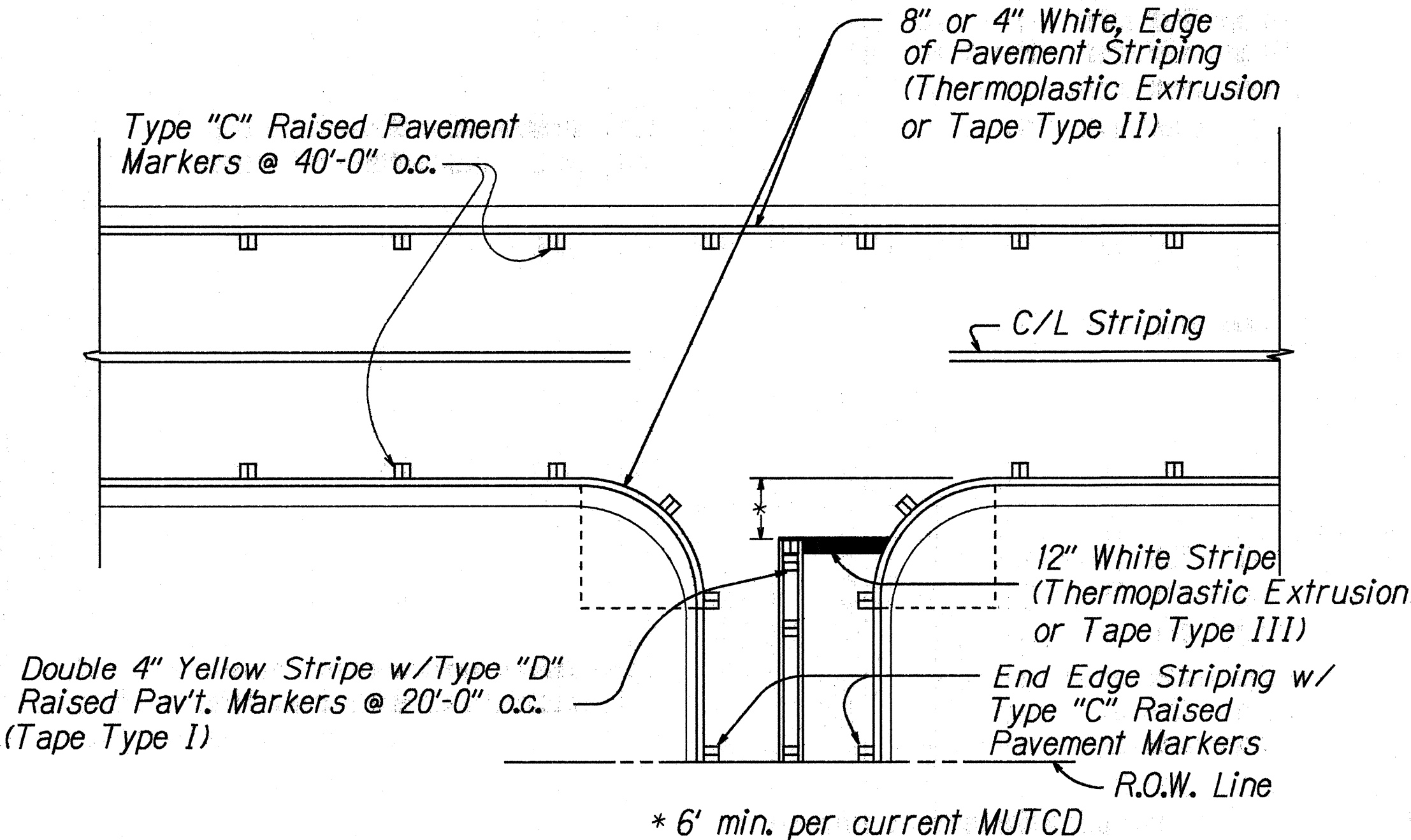
- 
  - 4 each Type J Raised Pavement Markers  
Type D Raised Pavement Markers @ 40'- 0" o.c.
  - 4 Each Type J Raised Pavement Markers  
Type D Raised Pavement Markers @ 40'-0" o.c.  
Type H Raised Pavement Markers (Reflective  
Surface facing no-passing direction)  
4" Single Solid Yellow Stripe  
(Tape Type I or Thermoplastic Extrusion)
  - 4" Double Solid Yellow Centerline Stripes with  
Type D Raised Pavement Markers @ 20'- 0" o.c.  
(Tape Type I or Thermoplastic Extrusion)
  - 4" or 8" White Edge Stripe (see Std. Plan TE-67)  
with Type C Raised Pavement Markers @ 40'-0" o.c.  
(Tape Type II or Thermoplastic Extrusion)
  - 8" White Channelizing Stripe with Type C Raised  
Pavement Markers @ 20'-0' o.c. (Tape, Type I  
or Thermoplastic Extrusion)
  - Transverse Median Diagonal Marking 12" Wide  
@ 20'-0" o.c. (Tape, Type II or  
Thermoplastic Extrusion)
  - 4"Double Solid Yellow Transverse Median Stripes  
with Type H Raised Pavement Markers @ 20'- 0"  
o.c. (Tape, Type I or Thermoplastic Extrusion)
  - Channelizing Island or Deceleration Lane Gore  
(Tape Type II or Thermoplastic Extrusion)
  - 4" White Guide Lines, 2' Stripe with 4'-0" space  
(Tape, Type III or Thermoplastic Extrusion)
  - 4" White Edge Line Extension, 2' Stripe at 10'-0"  
o.c. (Tape, Type III or Thermoplastic Extrusion)  
with Type C Markers at 40'-0" o.c.

REFLECTOR MARKER LEGEND

- 
  - RM-3, Yellow Reflector Marker with flex post unless otherwise noted.
  - Bi-Directional RM-3, Yellow Reflector Marker with flex post unless otherwise noted.

NOTES

- Layout of pavement markings and striping shall be done by the Contractor and approved by the Engineer prior to any installation work.
- Existing pavement markings not incorporated in the final traffic pattern shall be removed as directed by the Engineer. Costs shall be incidental to the various pavement marking items.
- Raised pavement markers shall not be installed within crosswalks.
- Final locations of all Stop Lines shall be approved by the Engineer prior to installation.
- All pavement striping shall be as noted on the Legend or plans, or as directed by the Engineer.
- All preformed pavement marking tapes over existing pavement shall be applied with an approved primer as recommended by the tape manufacturer and as approved by the Engineer. The primer shall be allowed to dry to the tacky stage prior to tape application.
- Contractor shall obtain blue raised pavement markers from County of Hawaii Fire Department and install them at the direction of the Engineer. The cost of installing the markers shall be incidental to other Contract Items.



TYPICAL EDGE OF PAVEMENT MARKING  
Not to Scale

SURVEY PLOTTED BY	DATE
DRAWN BY	
TRACED BY	
CHECKED BY	
QUANTITIES BY	
CHECKED BY	
ORIGINAL PLAN	
NOTE BOOK	
mhbrapml	
N <sub>o</sub> .	dgn

STATE OF HAWAII  
DEPARTMENT OF TRANSPORTATION  
HIGHWAYS DIVISION

PAVEMENT MARKING  
LEGEND AND NOTES  
HAWAII BELT ROAD RESURFACING  
PEPE'EKEO TO KOLEKOLE  
PROJECT NO. 19J-02-97M

Scale: None
Date: Dec., 1996

SHEET No. 1 OF 1 SHEETS