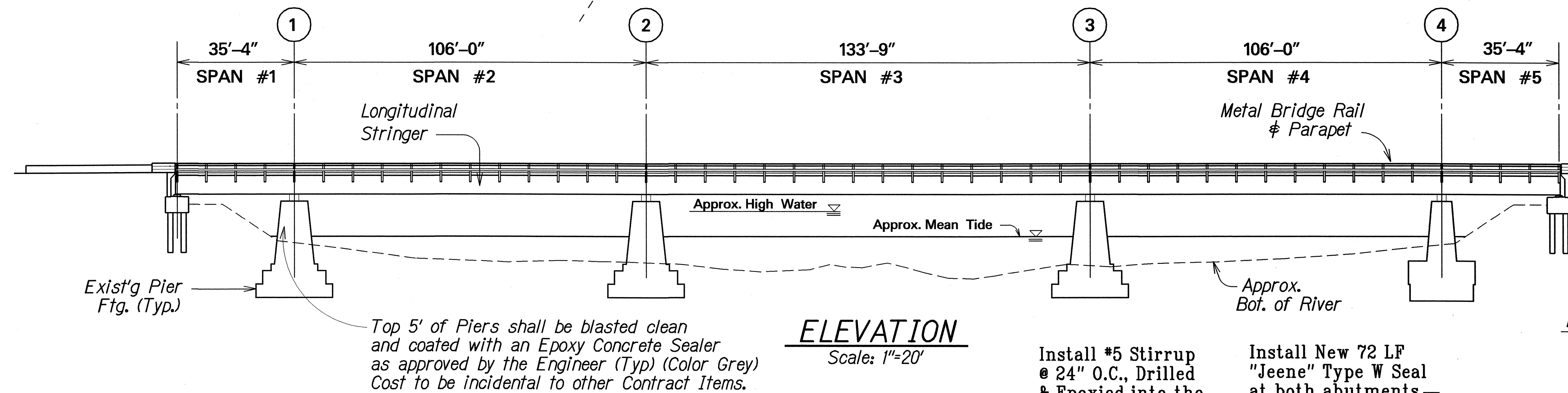
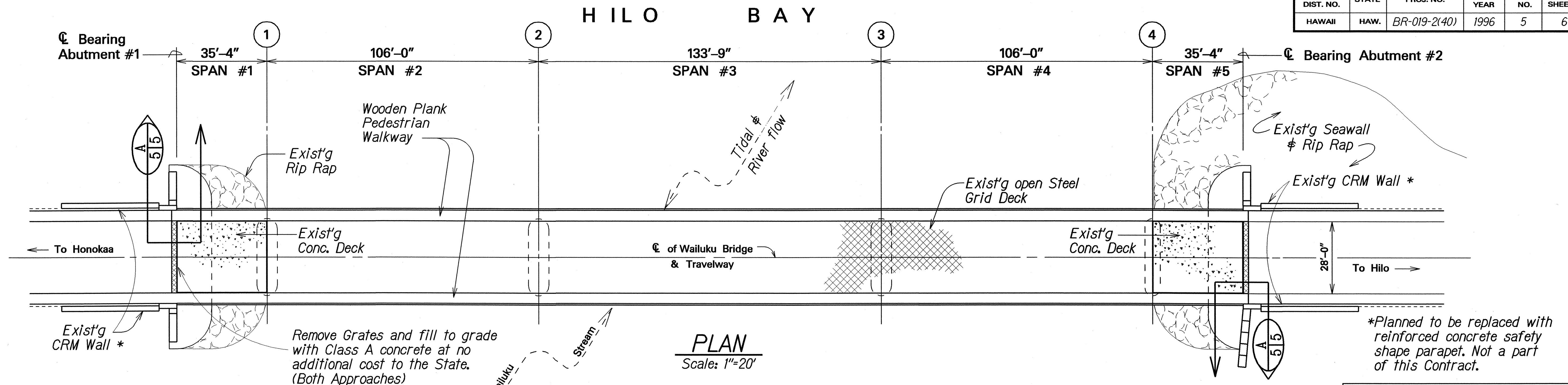


FED. ROAD DIST. NO.	STATE	FED. AID PROJ. NO.	FISCAL YEAR	SHEET NO.	TOTAL SHEETS
HAWAII	HAW.	BR-019-2(40)	1996	5	6



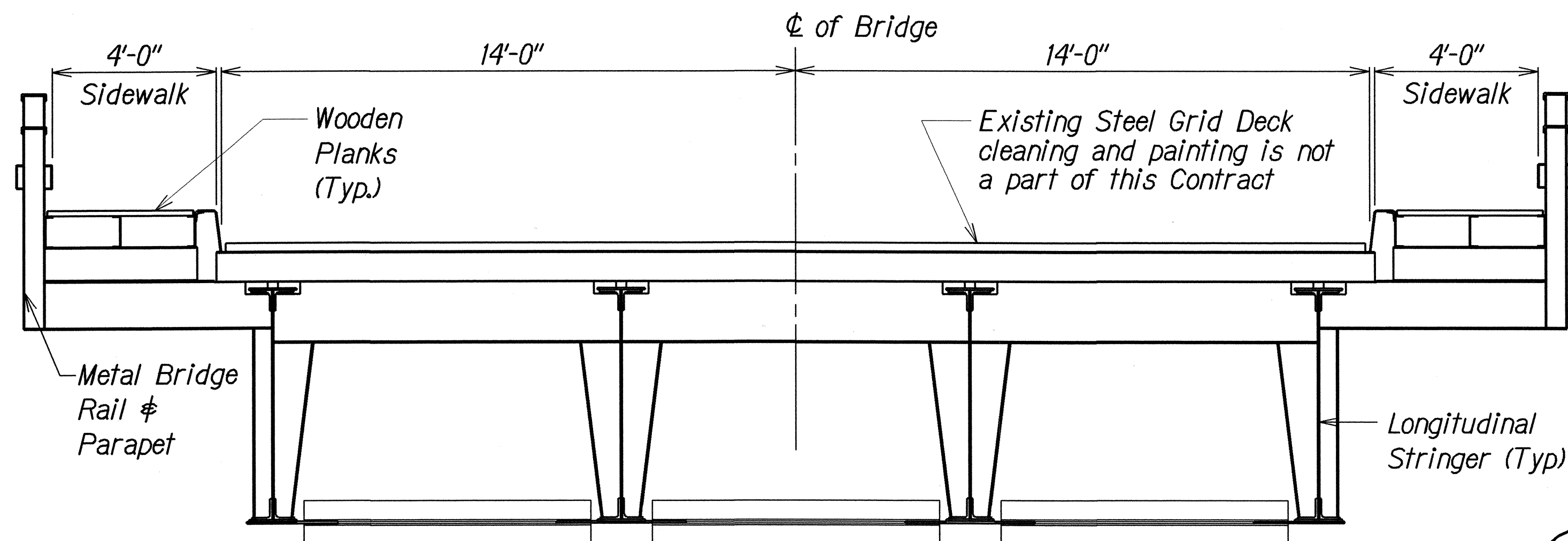
LEGEND FOR AS-BUILT POSTINGS

	Squiggly line for as-built deletion
	Double line for as-built deletion
Roadway	Text for as-built posting

Exposed Abutment Concrete shall be blasted clean and coated with an Epoxy Concrete sealer as approved by the Engineer (Typ.) (Color Grey) Cost to be incidental to other Contract Items.

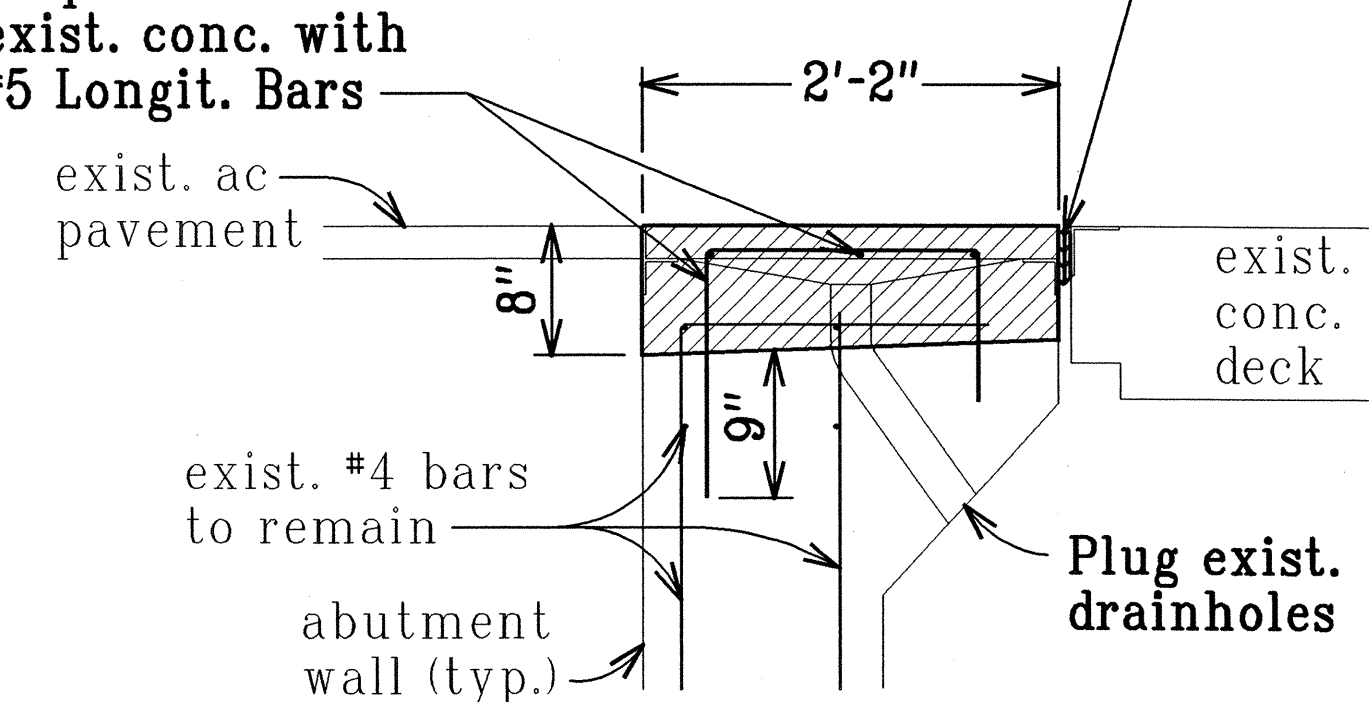
NOTES :

- Bridge Superstructure consists of built up members. Details are omitted for clarity.
- These Bridge Plans are for illustration only.
- Existing Steel Grid deck is not a part of this Contract. Contractor shall Remove the Steel Grid Deck & clean all attachment details and then replace Grid Deck with new hardware at no additional cost to the State. Contractor shall protect the Grid Deck from Cleaning & Painting Operations.



Install #5 Stirrup @ 24" O.C., Drilled & Epoxied into the exist. conc. with #5 Longit. Bars

Install New 72 LF "Jeene" Type W Seal at both abutments



EXPANSION JOINT REPLACEMENT DETAIL
WAILUKU BRIDGE - ABUTMENT #1 & #2
Scale: N.T.S.

STATE OF HAWAII
DEPARTMENT OF TRANSPORTATION
HIGHWAYS DIVISION
WAILUKU BRIDGE
PLAN AND ELEVATION
CLEAN AND PAINT STEEL MEMBERS
NANUE AND WAILUKU BRIDGES
F.A. PROJECT NO. BR-019-2(40)
Scale: As Shown Date: May, 1996
SHEET No. 1 OF 1 SHEETS

"AS-BUILT"