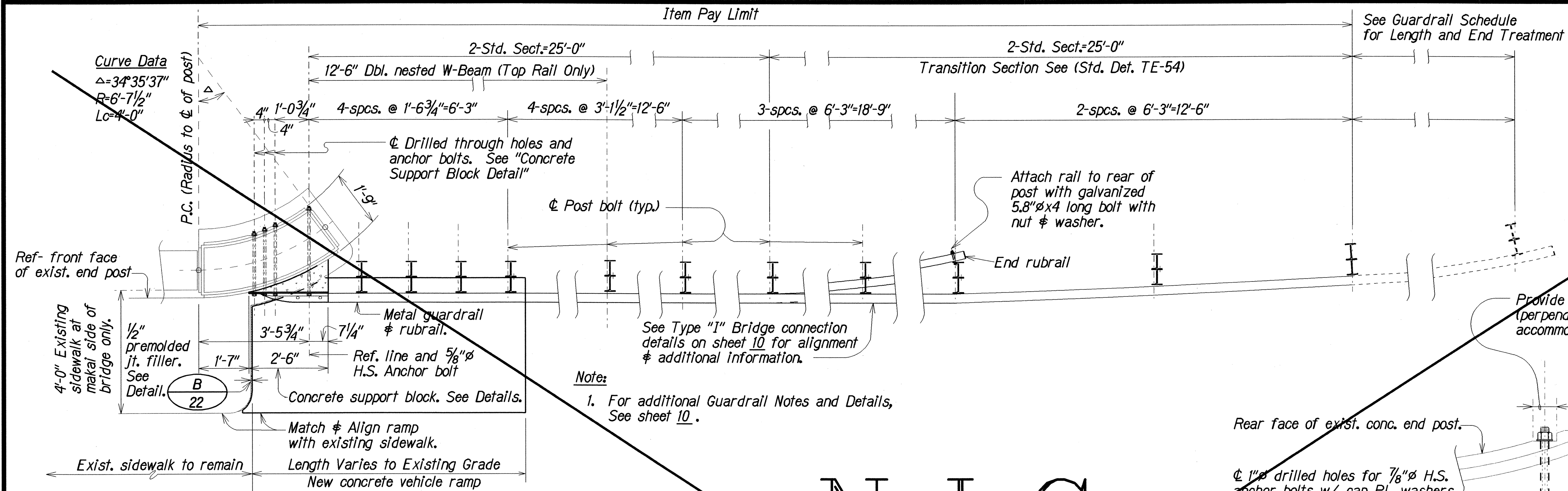
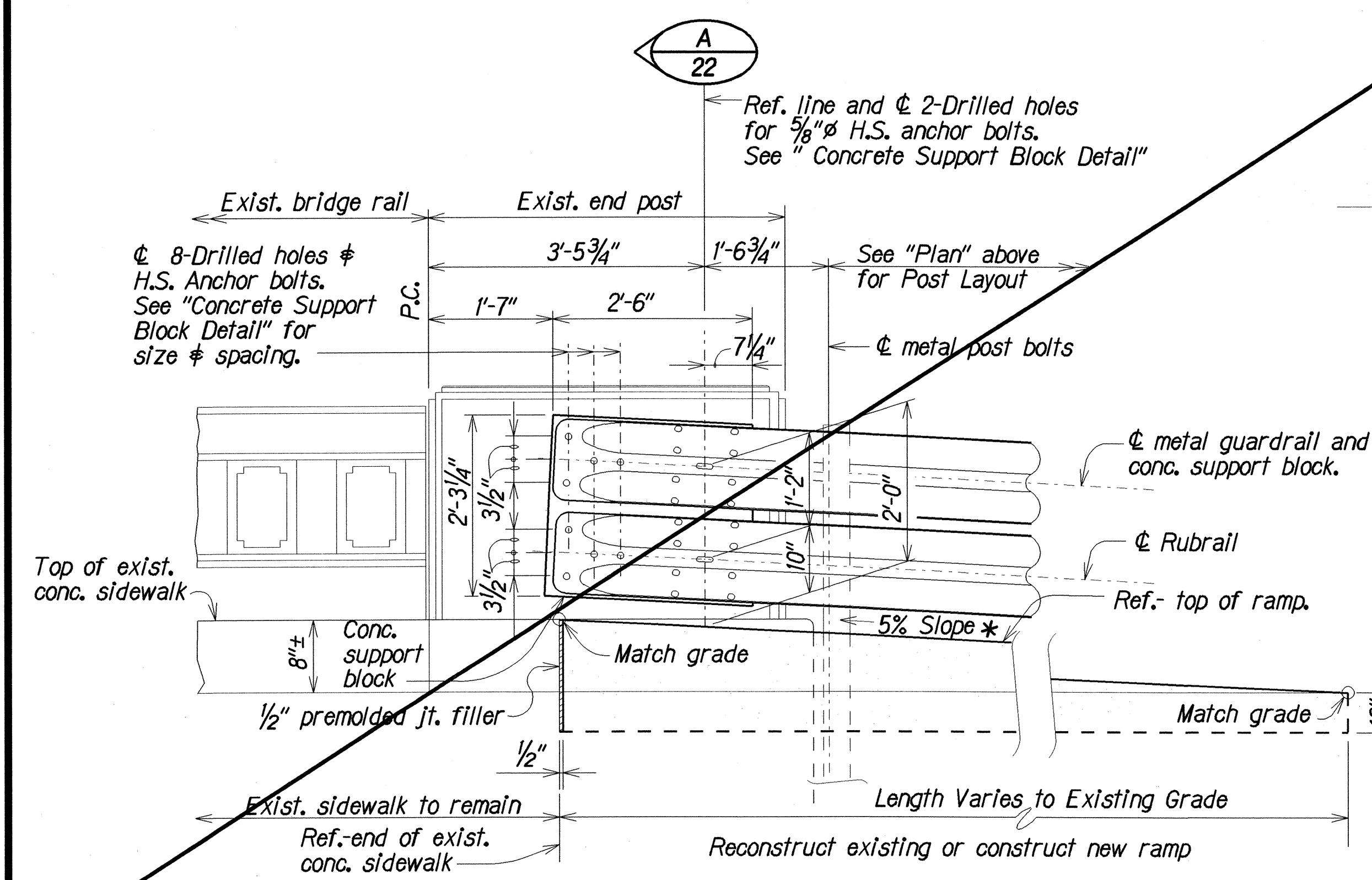
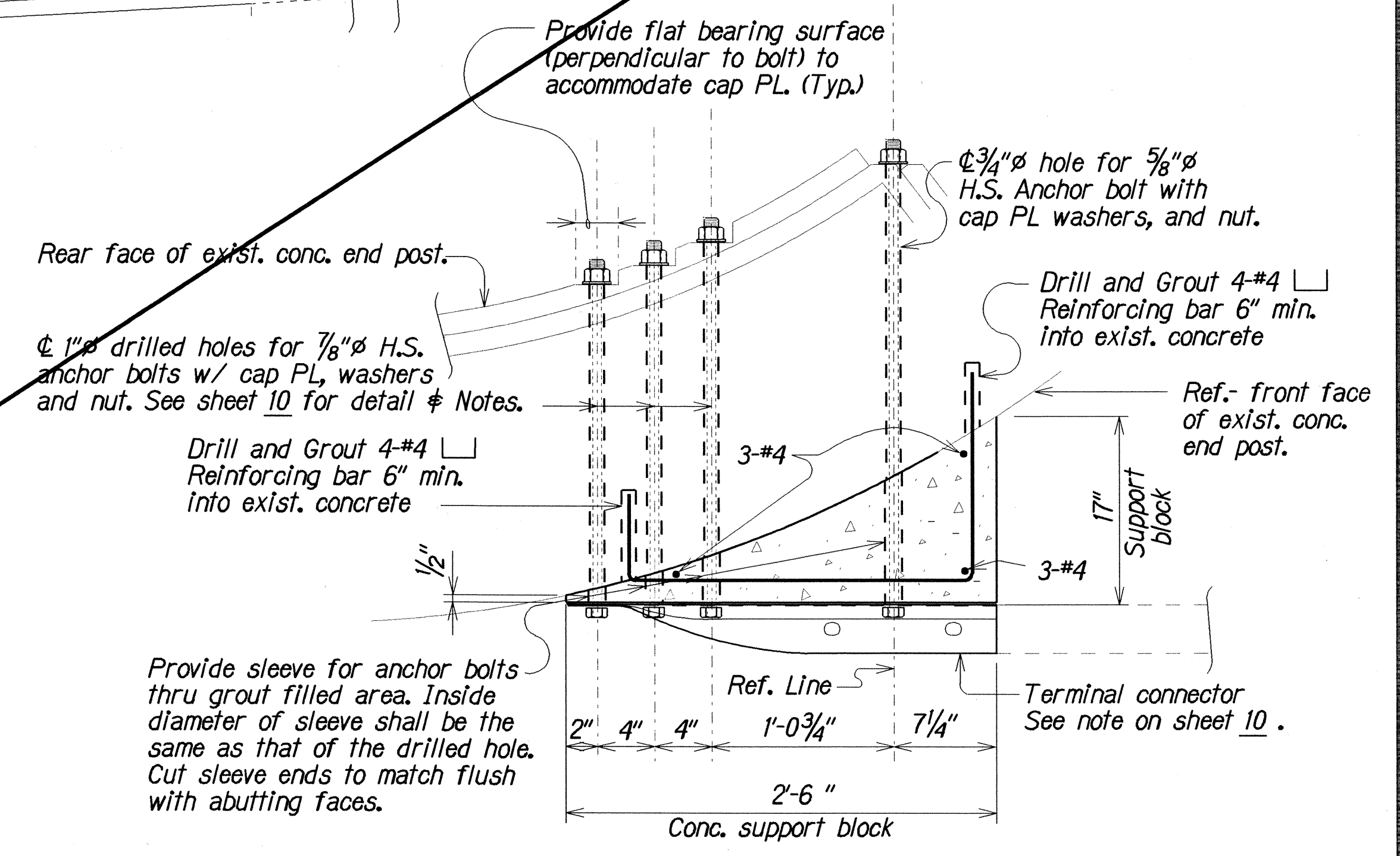


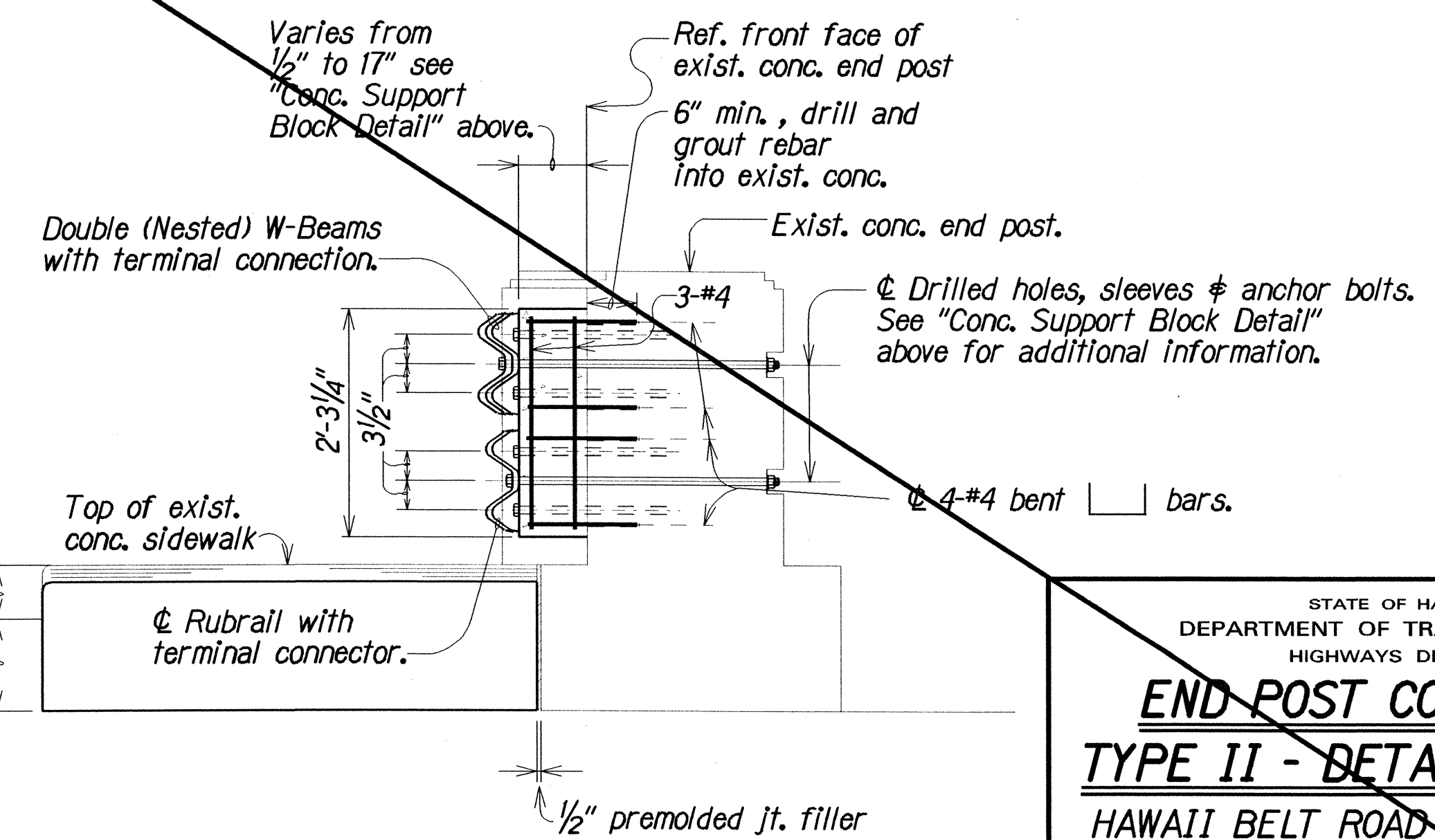
FED. ROAD DIST. NO.	STATE	FED. AID PROJ. NO.	FISCAL YEAR	SHEET NO.	TOTAL SHEETS
HAWAII	HAW.	STP-019-2(35)	1995	22	39



N.I.C.



DETAIL B 22
Not to scale



STATE OF HAWAII
DEPARTMENT OF TRANSPORTATION
HIGHWAYS DIVISION

**END POST CONNECTION
TYPE II - DETAILS & NOTES**

HAWAII BELT ROAD RESURFACING
PAPAIOU TO PEPEKEO
F.A. PROJECT NO. STP-019-2(35)

Scale: As shown Date: April, 1995

SHEET No. 2 OF 3 SHEETS

"AS-BUILT"