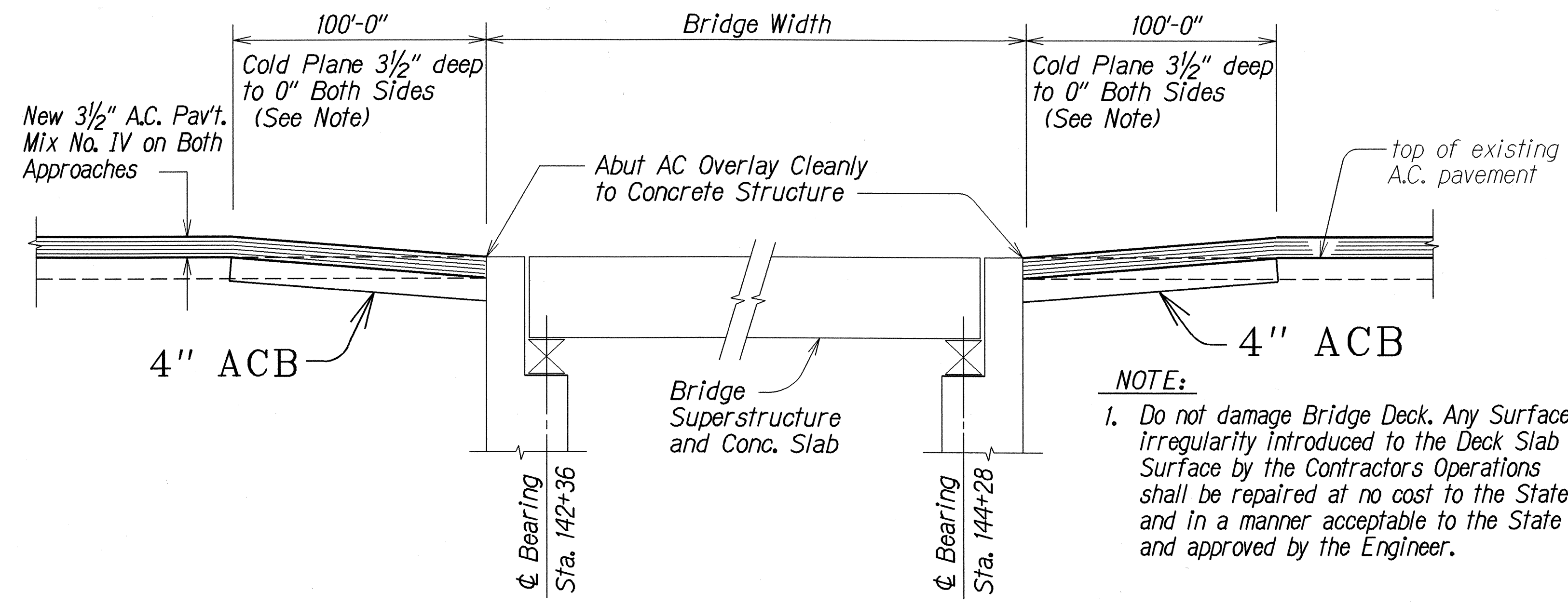
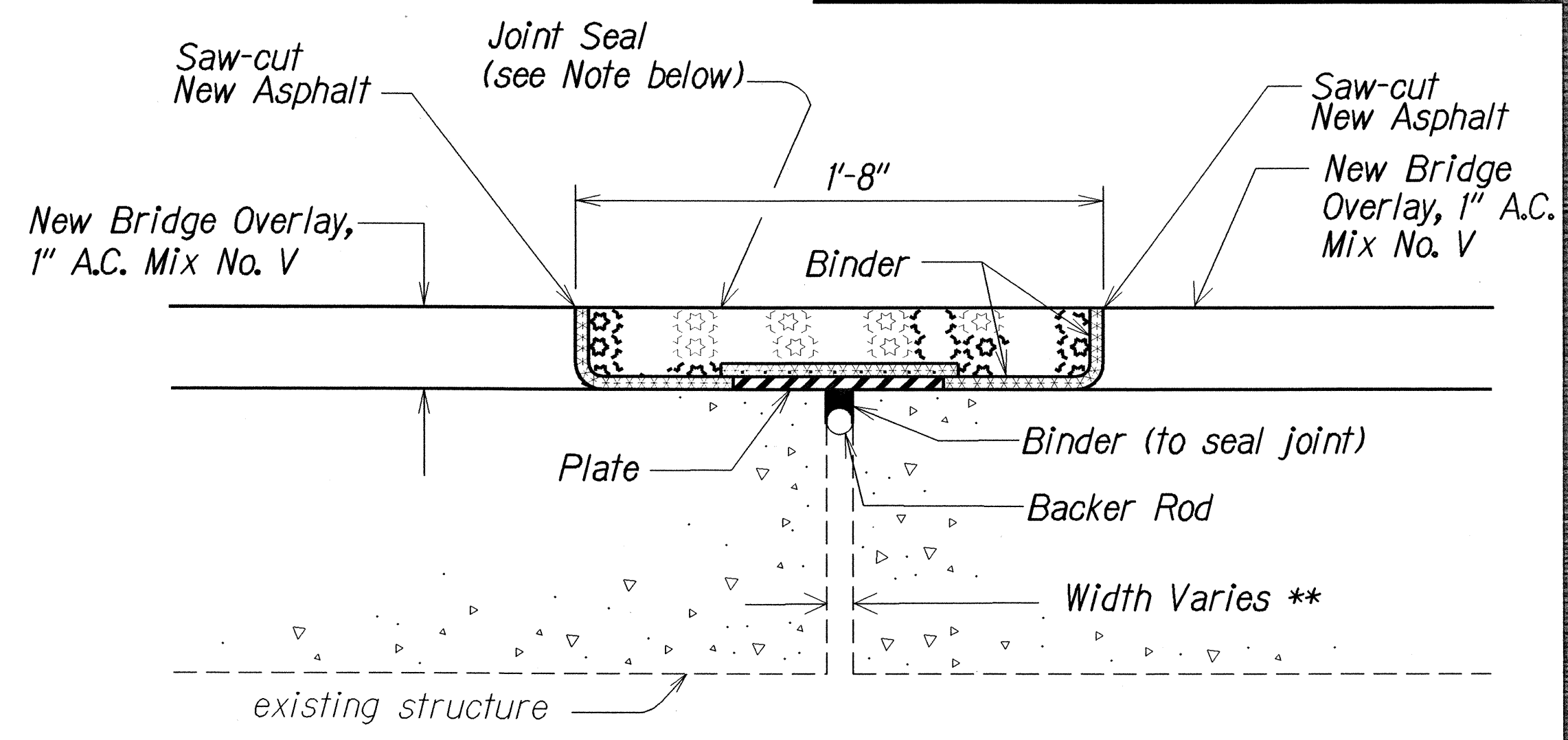


FED. ROAD DIST. NO.	STATE	FED. AID PROJ. NO.	FISCAL YEAR	SHEET NO.	TOTAL SHEETS
HAWAII	HAW.	STP-019-2(35)	1995	19	39



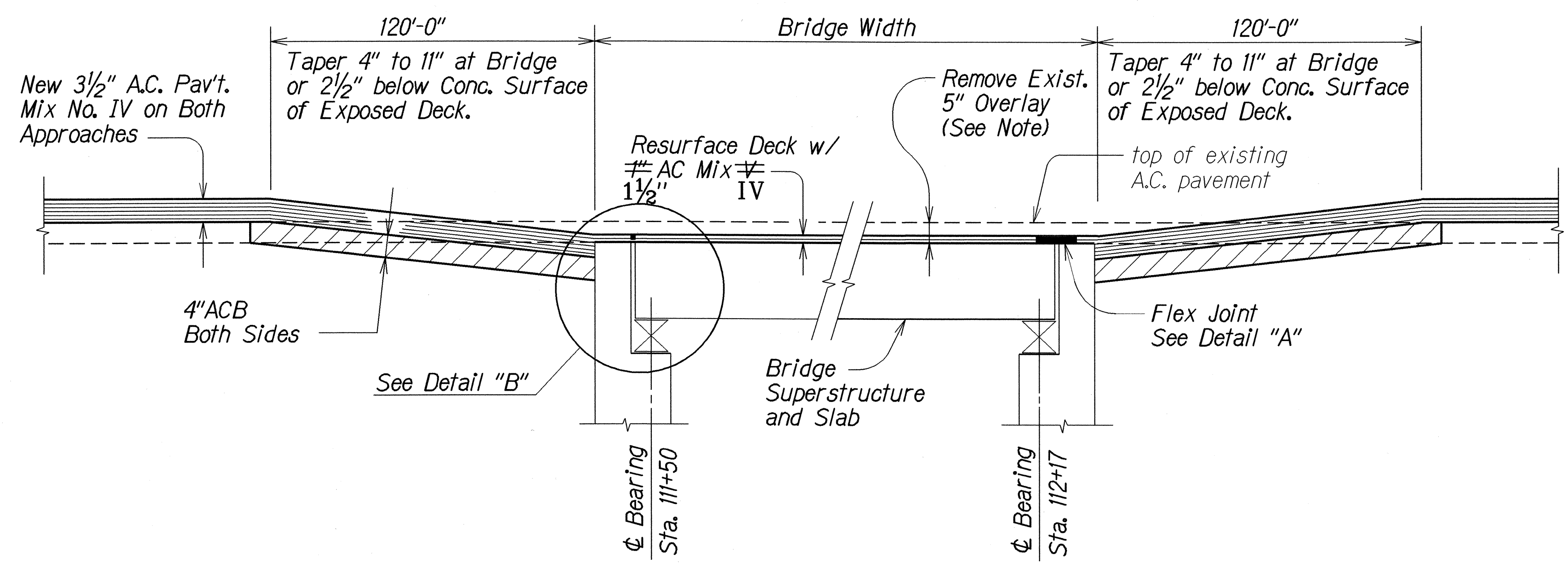
WAIAMA BRIDGE APPROACH DETAIL
Not to Scale



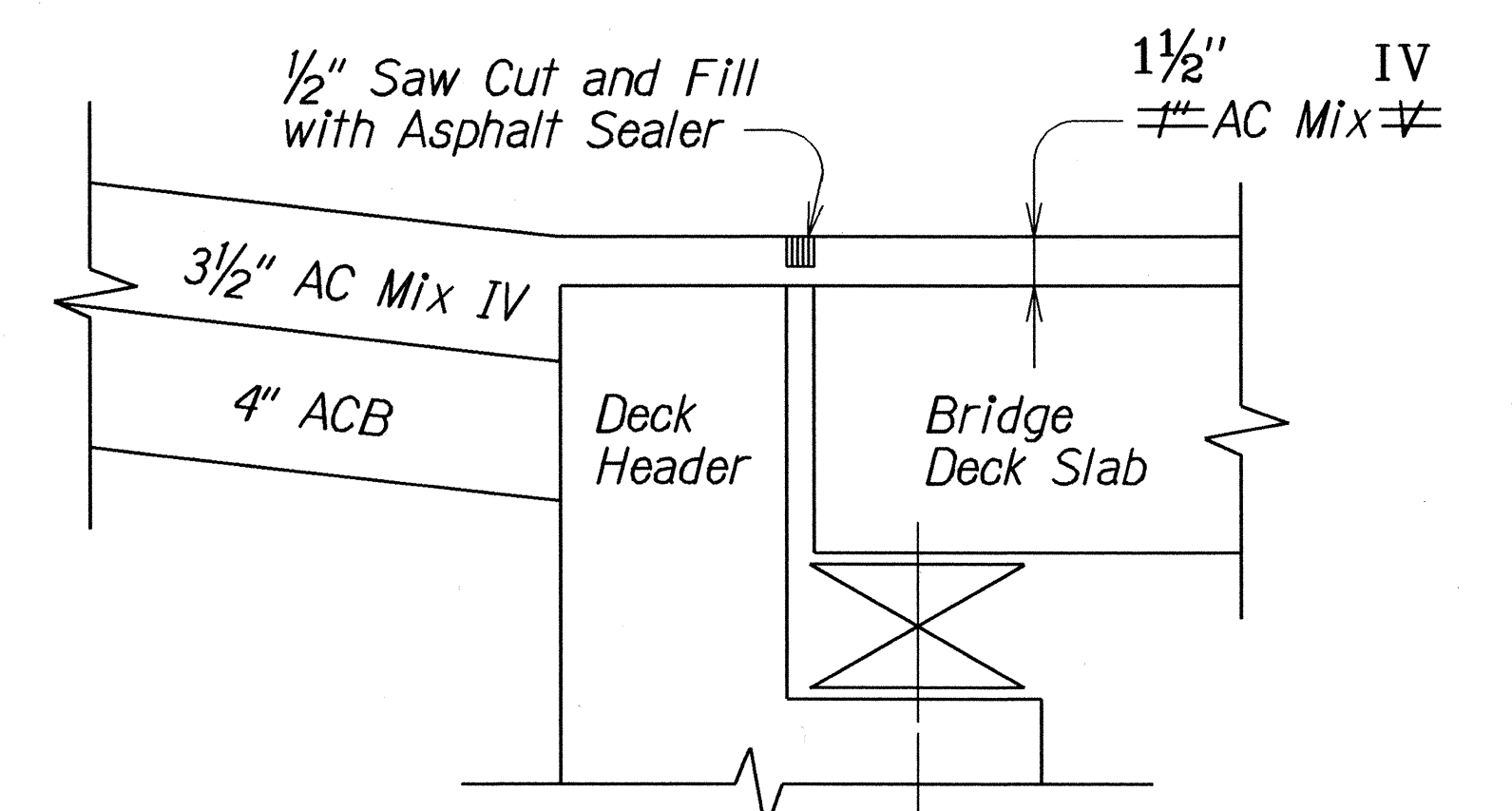
NOTE: ** Contractor shall verify width in the field prior to pre-fabricating and ordering of materials .

NOTE: Refer to Special Provisions, Section 676 and Section 677 for additional descriptions.

DETAIL "A"
Not to Scale



A. C. REMOVAL & RESURFACING AT KAWAINUI BRIDGE
Not to Scale



DETAIL "B"
Not to Scale

NOTE:

1. Do not damage Bridge Deck. Any Surface irregularity introduced to the Deck Slab Surface by the Contractors Operations shall be repaired at no cost to the State and in a manner acceptable to the State and approved by the Engineer.
2. Excavation of bridge approach shall be paid for under Item No. 651.0100 Excavation for Weakened Pavement Areas.

LEGEND FOR AS-BUILT POSTINGS	
	Squiggly line for as-built deletion
	Double line for as-built deletion
Roadway	Text for as-built posting

6/8/95	Revise finish course from 3" Mix IV to 3 1/2" Mix IV.
DATE	REVISION
STATE OF HAWAII DEPARTMENT OF TRANSPORTATION HIGHWAYS DIVISION BRIDGE RECONSTRUCTION DETAILS HAWAII BELT ROAD RESURFACING PAPAIKOU TO PEPEKEO F.A. PROJECT NO. STP-019-2(35) Scale: As Shown Date: April, 1995 SHEET No. 1 OF 1 SHEETS	