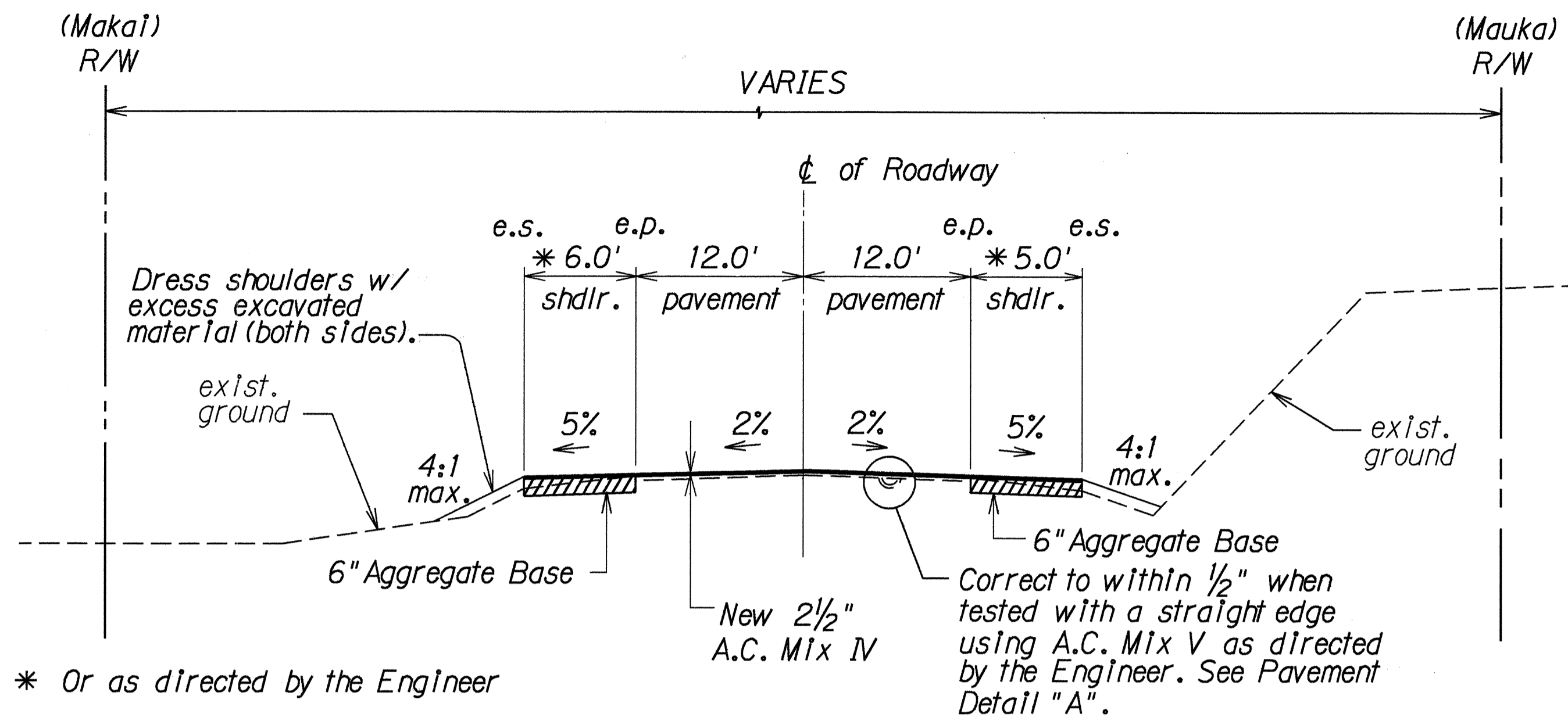


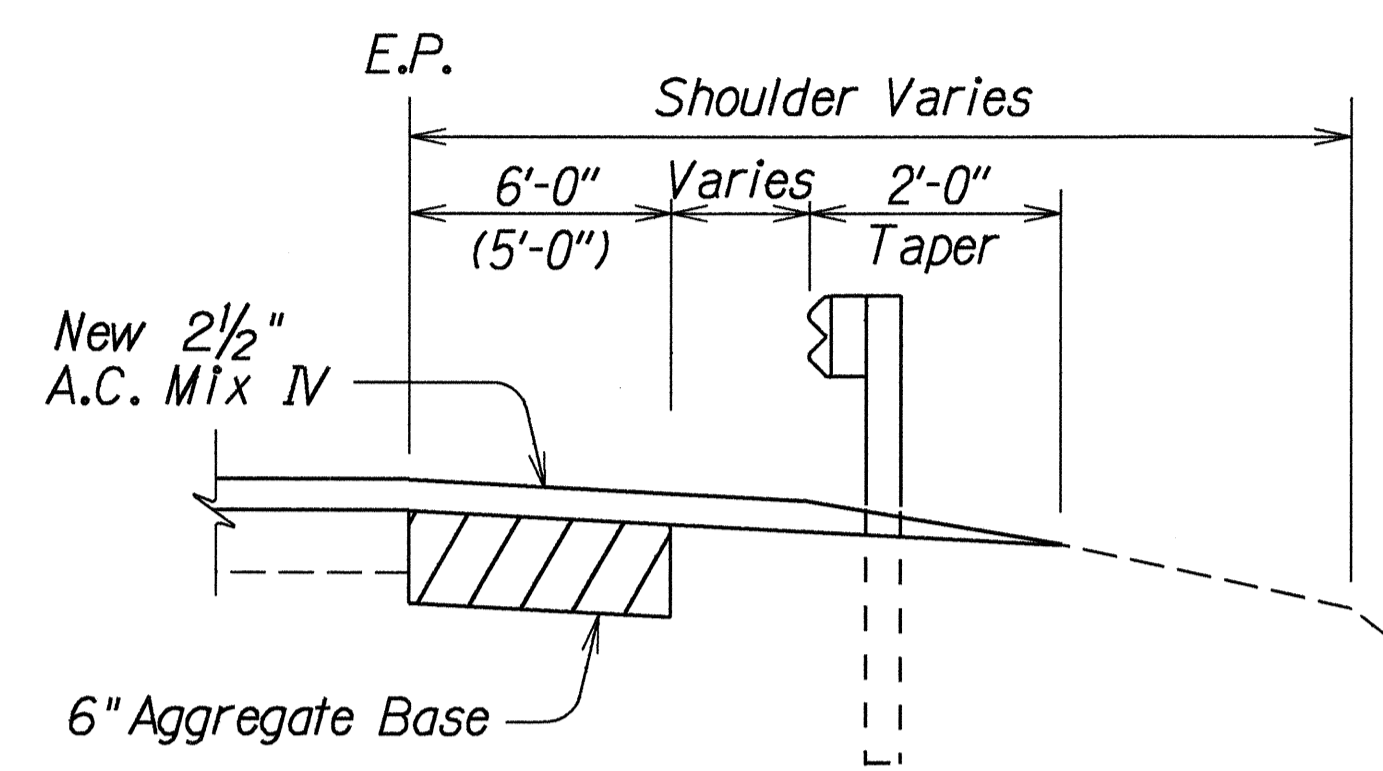
FED. ROAD DIST. NO.	STATE	FED. AID PROJ. NO.	FISCAL YEAR	SHEET NO.	TOTAL SHEETS
HAWAII	HAW.	STP-019-2(33)	1994	4	25



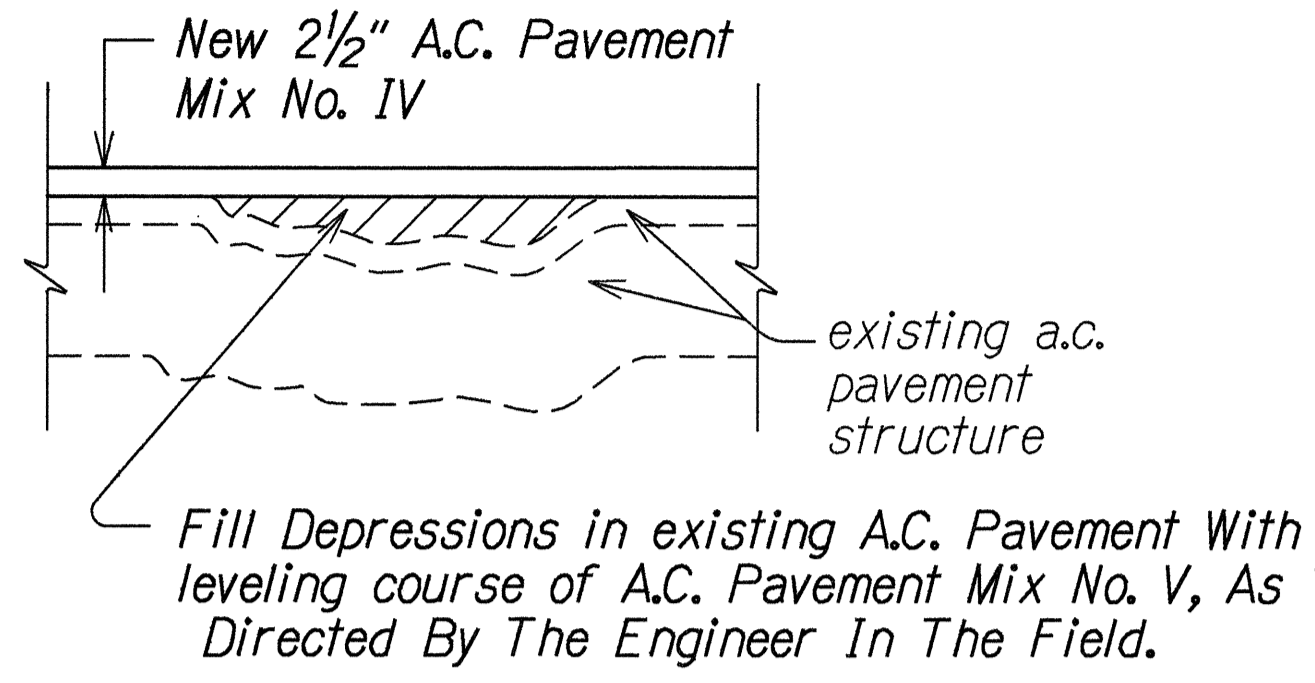
TYPICAL SECTION
Not To Scale

Typical Guardrail Detail Note

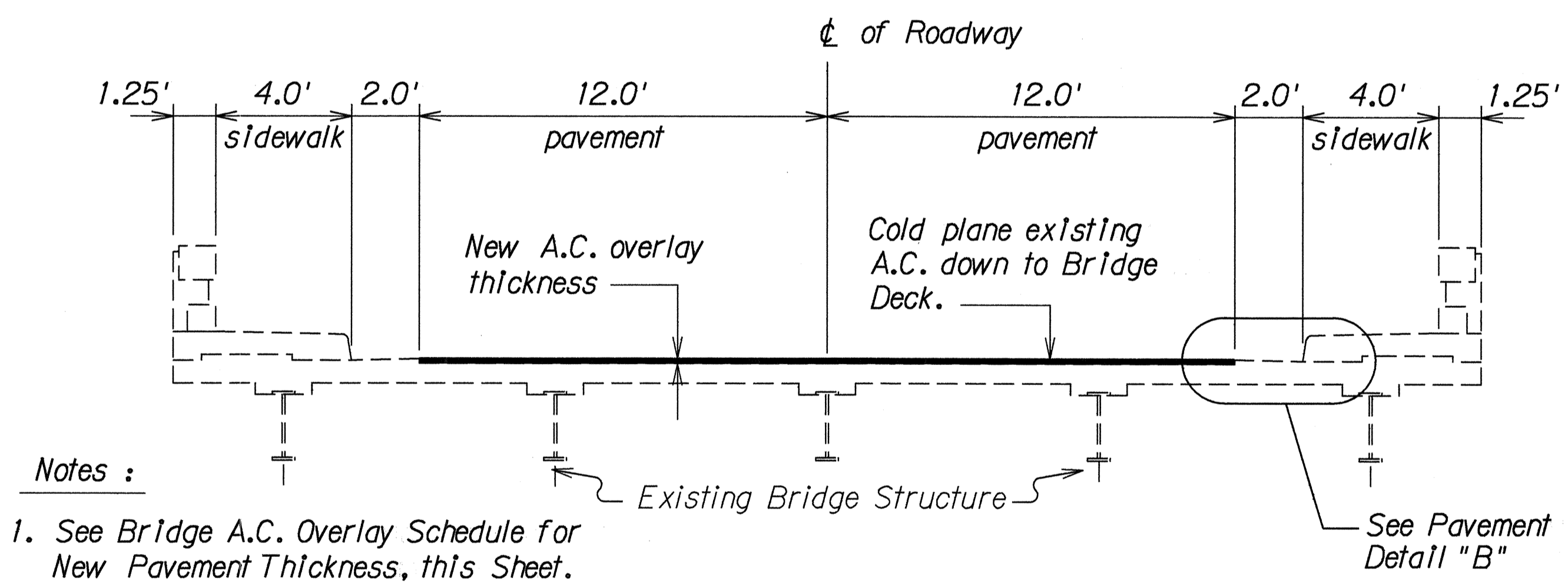
1. When paving under existing guardrails, the guardrail height shall be reset as directed by the Engineer to conform with Standard Plan TE-50. Payment shall be made under Item No. 606.3500- Reset Guardrail. Estimated quantity 2,500 linear feet.



TYPICAL GUARDRAIL DETAIL
Not To Scale

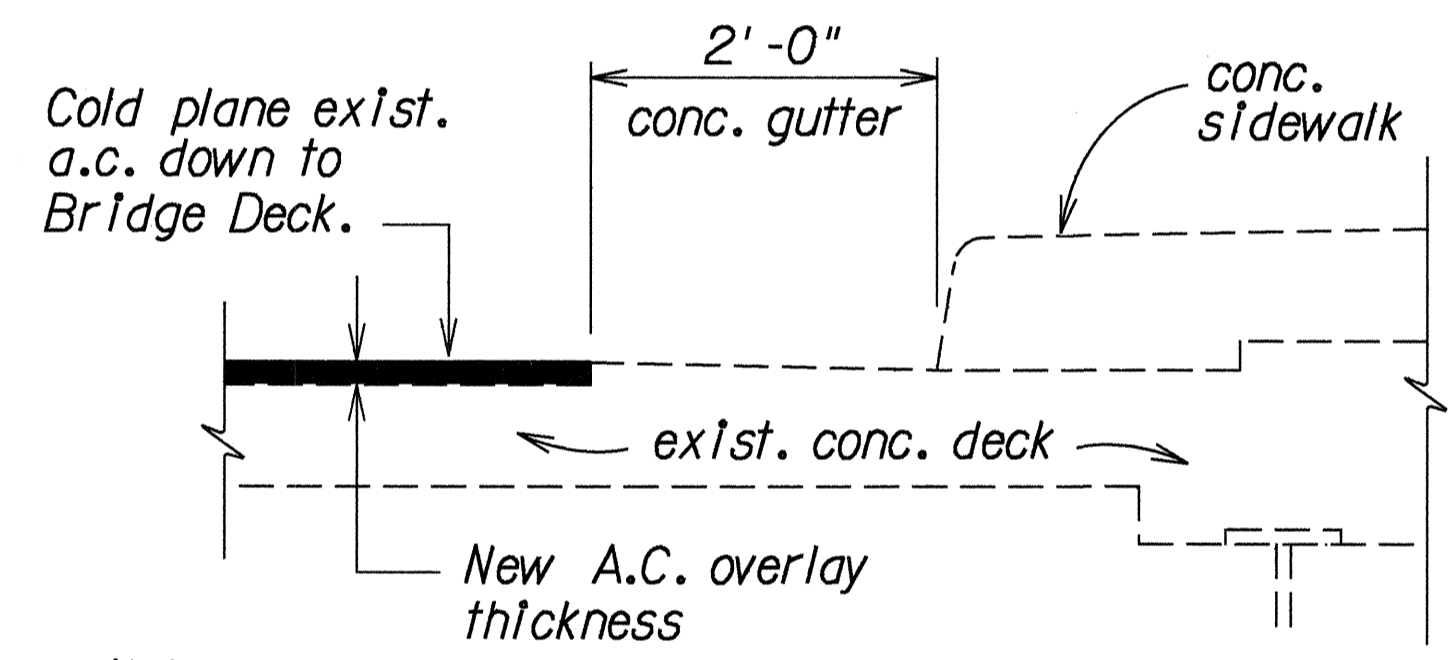


PAVEMENT DETAIL "A"
Not To Scale



- Notes :
1. See Bridge A.C. Overlay Schedule for New Pavement Thickness, this Sheet.
 2. See Bridge Expansion Joint Detail Sheet 5 .

TYPICAL SECTION thru BRIDGE DECK
Not To Scale

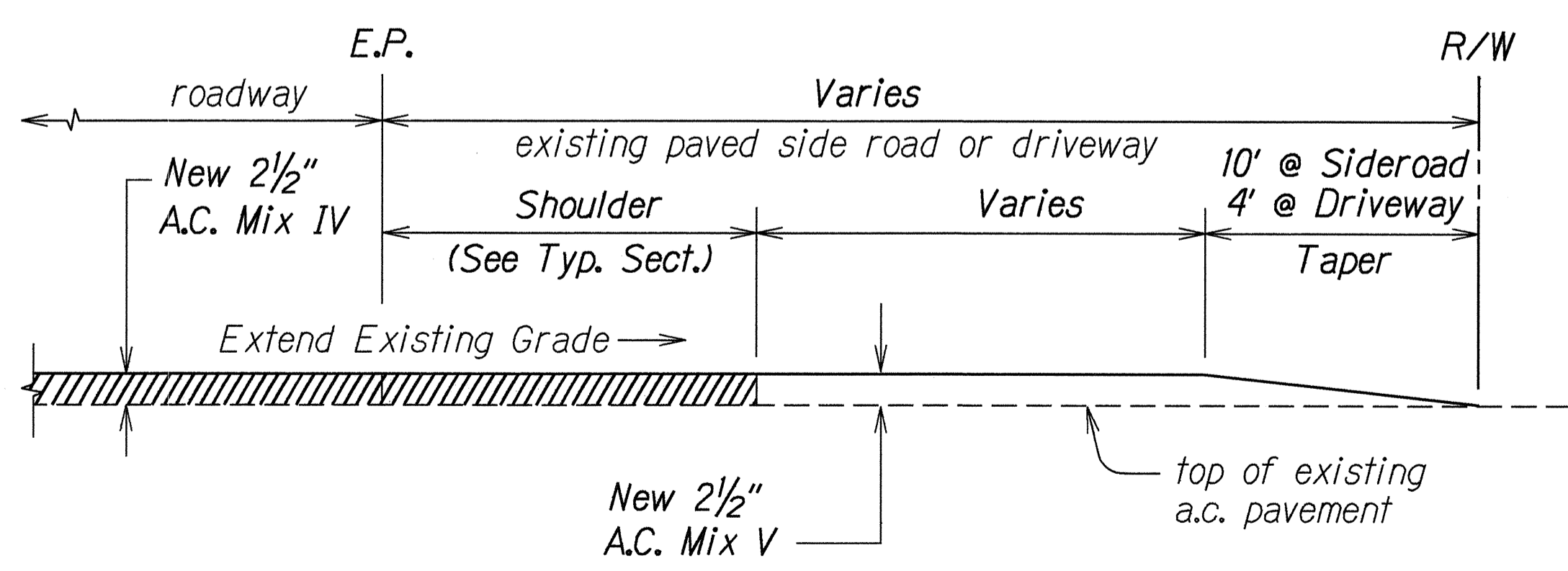


Note:
Existing a.c. thickness varies 1 1/2" to 4". Verfiy in the field.

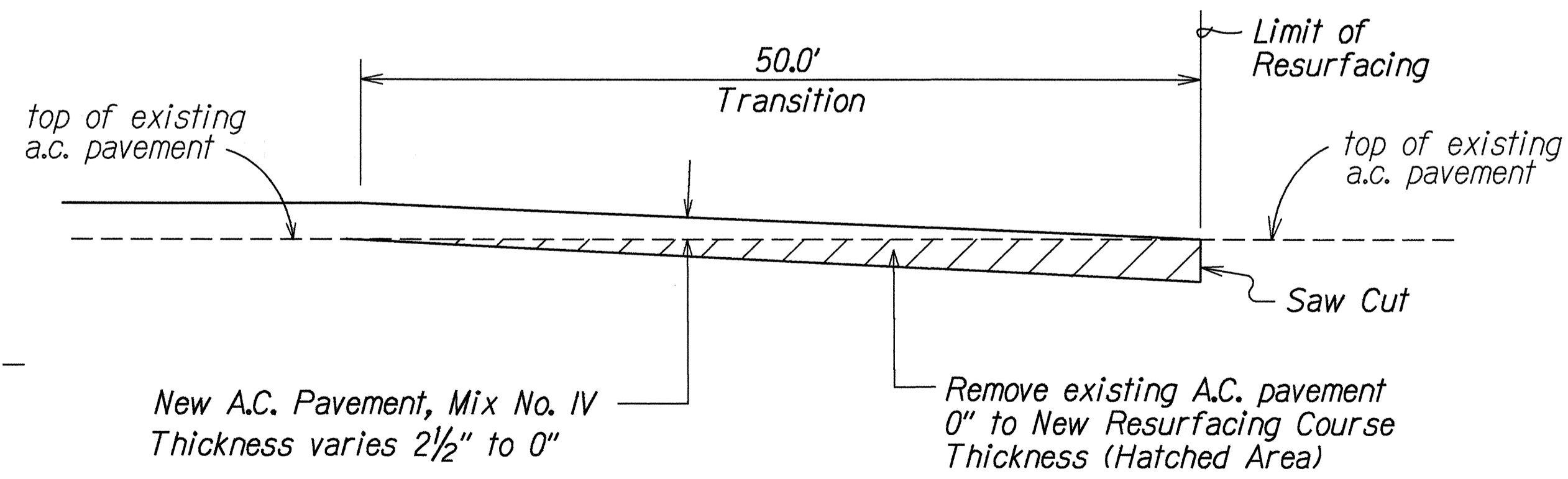
PAVEMENT DETAIL "B"
Not To Scale

BRIDGE A.C. OVERLAY SCHEDULE	
BRIDGE	A.C. MIX NO. IV
KILAU	1.5 "
MANOWAIOPAE	1.5 "
KUWAIKAHI	1.5 "
KIHALANI	1.5 "
KAWILAHILAHI	1.5 "
MOANALULU	1.5 "
KAALAU	2.0 "
* POHAKUPUKA	2.0 "
AHOLE	2.0 "

* For Pohakupuka Bridge, the existing a.c. pavement is underlain by aggregate base course that varies in depth from 4" to 10". The aggregate base course shall remain after a.c. removal, and finish rolled prior to placement of the new A.C. overlay.



A. C. RESURFACING AT PAVED SIDEROAD OR PAVED DRIVEWAY DETAIL
Not To Scale



COLD PLANED TRANSITION TO EXISTING A.C. PAVEMENT @ BEGIN PROJECT LIMIT AND END EXCEPTION AREA LIMIT
Not To Scale

5-22-95	Added Typical Guardrail Detail Note No. 1.
DATE	REVISION
STATE OF HAWAII DEPARTMENT OF TRANSPORTATION HIGHWAYS DIVISION TYPICAL SECTION HAWAII BELT ROAD RESURFACING KILAU GULCH TO AHOLE BRIDGE F.A. PROJECT NO. STP-019-2(33) Scale: As Shown Date: July, 1994 SHEET No. 1 OF 1 SHEETS	

DATE	_____
SURVEY PLOTTED BY	_____
DESIGNED BY	_____
TRACED BY	_____
NOTE BOOK	_____
QUANTITIES BY	_____
CHECKED BY	_____
ORIGINAL PLAN	_____