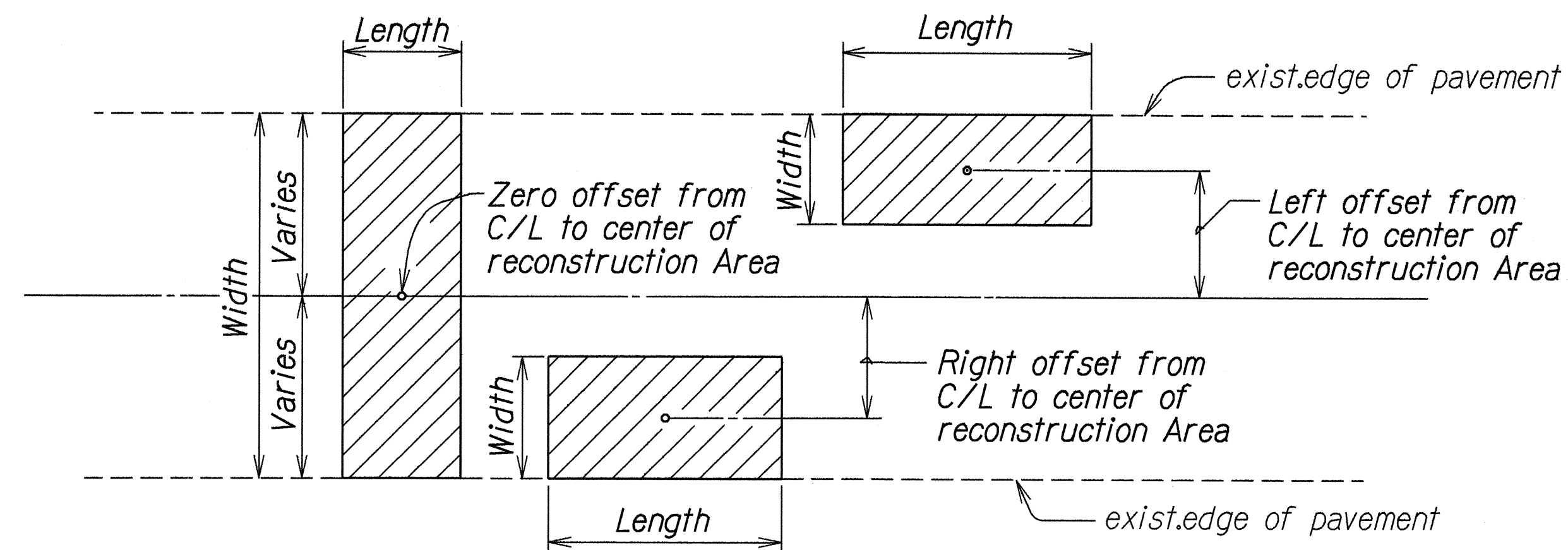
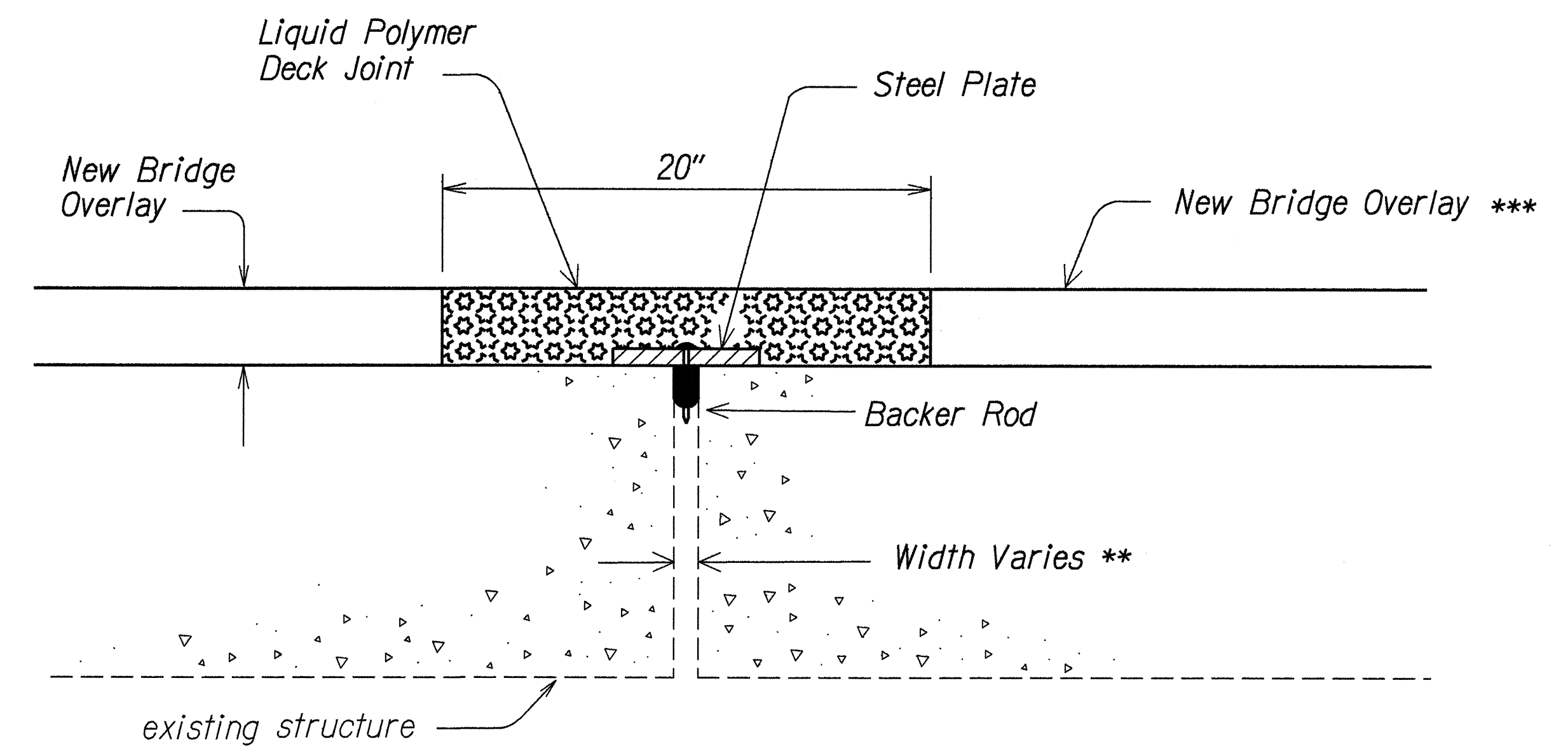


FED. ROAD DIST. NO.	STATE	FED. AID PROJ. NO.	FISCAL YEAR	SHEET NO.	TOTAL SHEETS
HAWAII	HAW.	STP-019-2(33)	1994	5	25



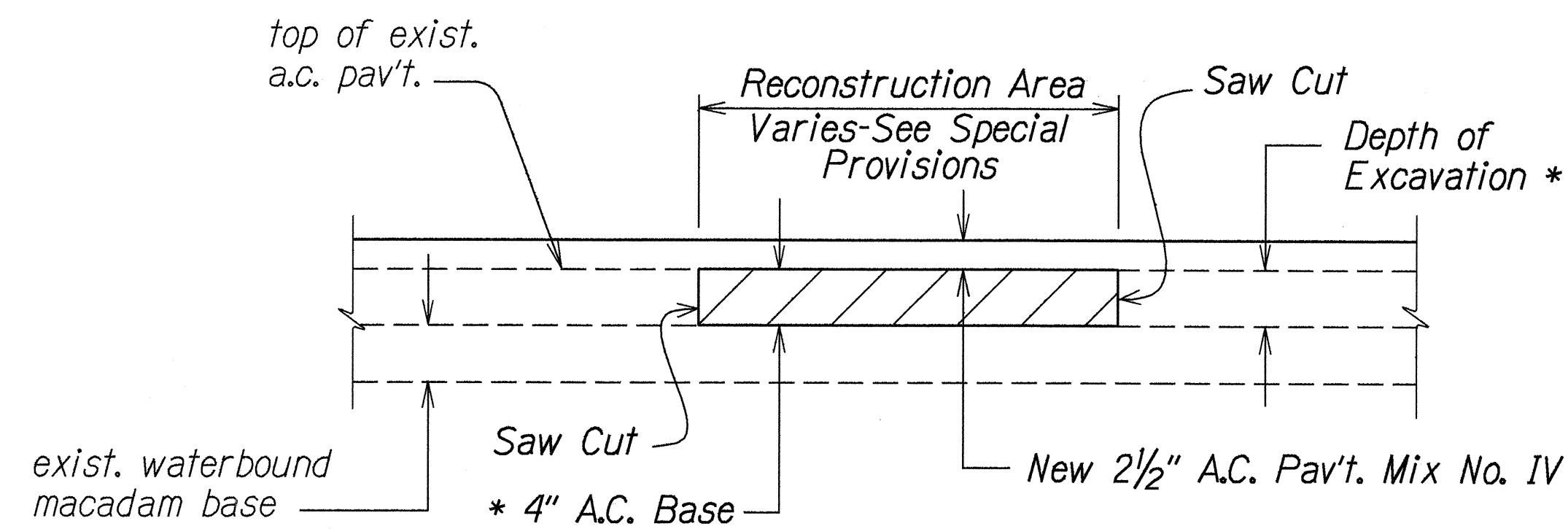
TYPICAL PLAN
Not To Scale

NOTE:
For reconstruction area schedule see special provisions.

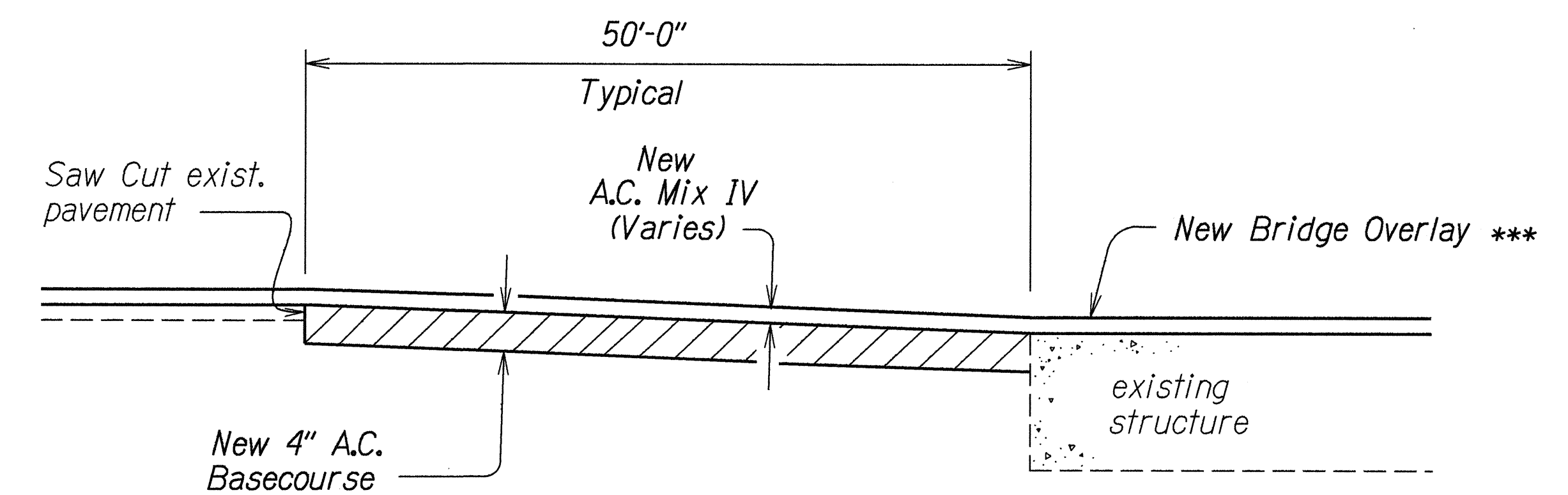


EXPANSION JOINT DETAIL AT BRIDGE DECK
Not to Scale

NOTE:
** Contractor shall verify width in the field prior to pre-fabricating and ordering of materials .
*** See Sheet No. 4 for New Bridge Overlay Thickness .



* Do not disturb waterbound macadam during excavation.
A.C. PAVEMENT RECONSTRUCTION DETAIL
Not To Scale



BRIDGE APPROACH RECONSTRUCTION DETAIL
Not to Scale

DATE	____
SURVEY PLOTTED BY	____
DESIGNED BY	____
TRACED BY	____
NOTE BOOK	____
QUANTITIES BY	____
CHECKED BY	____
ORIGINAL PLAN	____

STATE OF HAWAII DEPARTMENT OF TRANSPORTATION HIGHWAYS DIVISION	
PAVEMENT RECONSTRUCTION	
& BRIDGE JOINT DETAILS	
HAWAII BELT ROAD RESURFACING KILAU GULCH TO AHOLE BRIDGE F.A. PROJECT NO. STP-019-2(33)	
Scale: As Shown	Date: July, 1994
SHEET No. 1 OF 1 SHEETS	