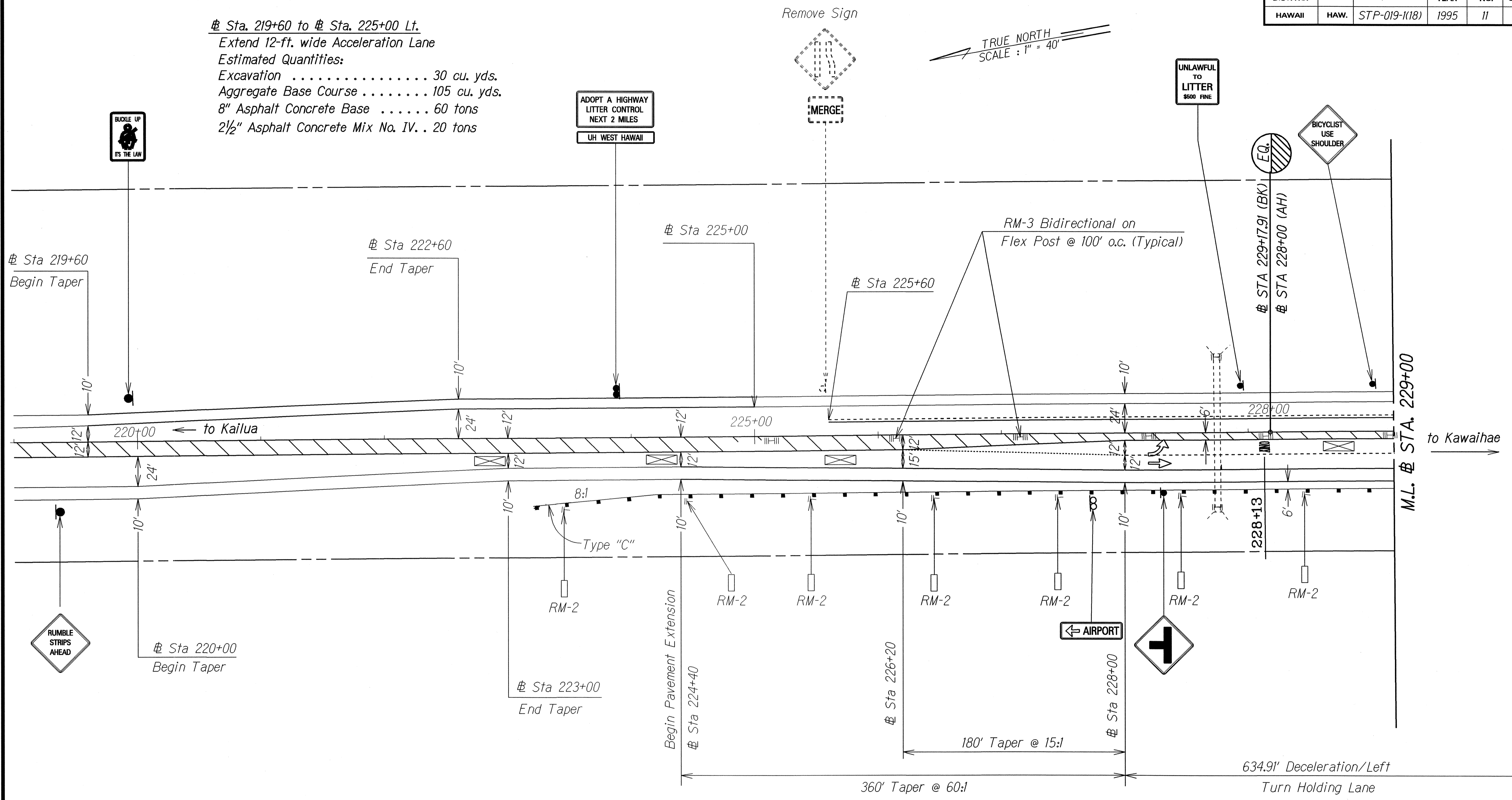


FED. ROAD DIST. NO.	STATE	FED. AID PROJ. NO.	FISCAL YEAR	SHEET NO.	TOTAL SHEETS
HAWAII	HAW.	STP-019-1(18)	1995	11	30

Sta. 219+60 to # Sta. 225+00 Lt.
 Extend 12-ft. wide Acceleration Lane
 Estimated Quantities:
 Excavation 30 cu. yds.
 Aggregate Base Course 105 cu. yds.
 8" Asphalt Concrete Base 60 tons
 2 1/2" Asphalt Concrete Mix No. IV. . 20 tons



ORIGINAL PLAN	DATE
SURVEY PLOTTED BY	01/15/94
DRAWN BY	
DESIGNED BY	
QUANTITIES BY	
CHECKED BY	

LEGEND FOR AS-BUILT POSTINGS	
	Squiggly line for as-built deletion
	Double line for as-built deletion
Roadway	Text for as-built posting

STATE OF HAWAII
 DEPARTMENT OF TRANSPORTATION
 HIGHWAYS DIVISION
ROADWAY PLAN
 QUEEN KAAHUMANU HWY RESURFACING
 HONOKOHAU TO KEAHOLE
 F. A. Project No. STP-019-1(18)

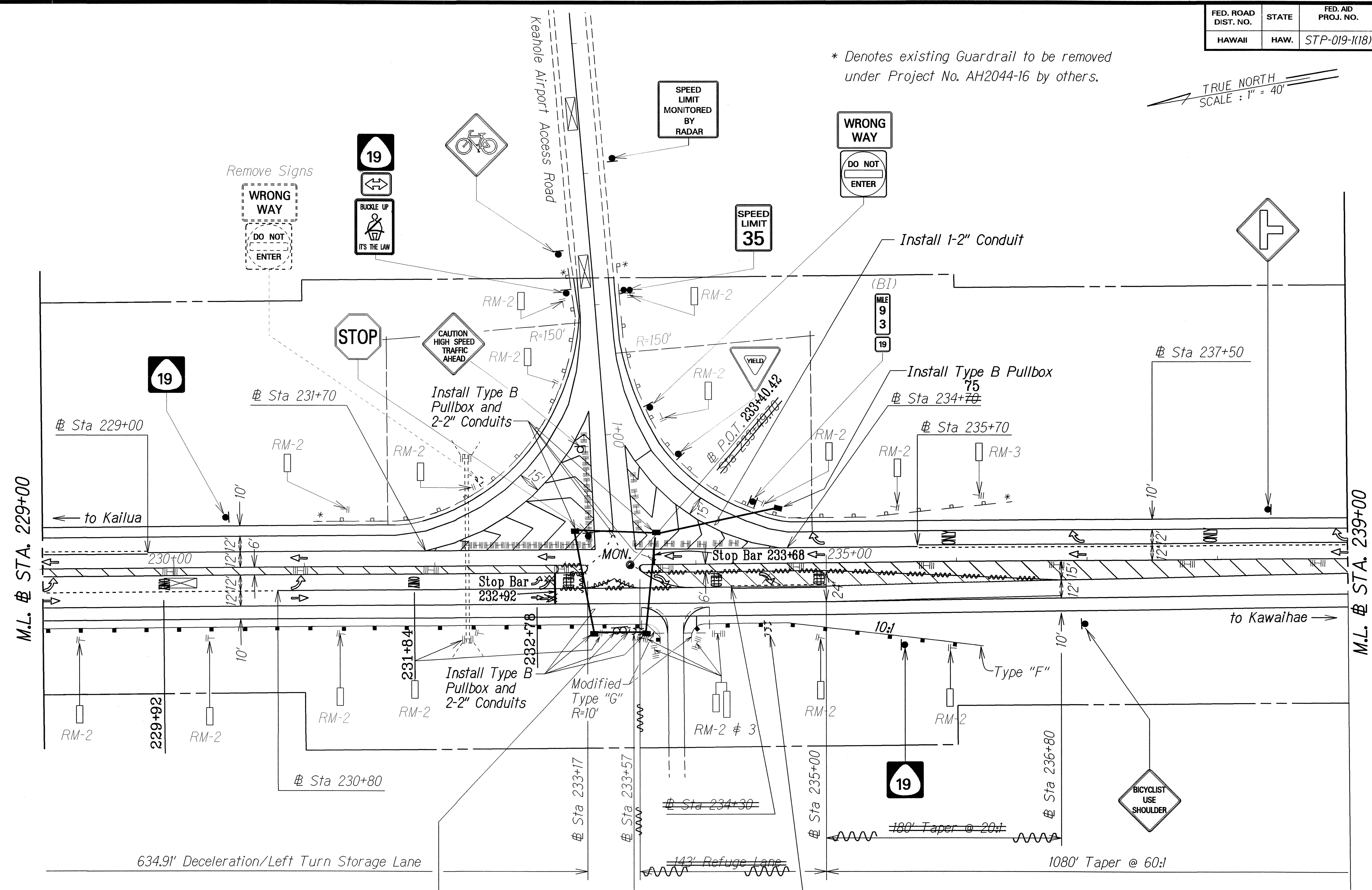
Scale: 1"=40' Date: Feb., 1995
 SHEET No. 6 OF 8 SHEETS

AS-BUILT

FED. ROAD DIST. NO.	STATE	FED. AID PROJ. NO.	FISCAL YEAR	SHEET NO.	TOTAL SHEETS
HAWAII	HAW.	STP-019-1(18)	1995	12	30

TRUE NORTH
SCALE: 1" = 40'

* Denotes existing Guardrail to be removed under Project No. AH2044-16 by others.



ADDITIONAL ESTIMATED QUANTITIES FOR WIDENING

- Excavation 500 cu. yds.
- Asphalt Concrete Base 500 tons
- Asphalt Concrete Mix No. IV 200 tons
- Standard Metal Guardrail 1,338 l.f.

Kohala Coast
Waikoloa 18
Kawaihae 27
Sta. 233

ADOPT A HIGHWAY
LITTER CONTROL
NEXT 2 MILES

LITTER BUGS HELCO EMPLS
Existing Sign
To Remain

LEGEND FOR AS-BUILT POSTINGS

	Squiggly line for as-built deletion
	Double line for as-built deletion
Roadway	Text for as-built posting

STATE OF HAWAII
DEPARTMENT OF TRANSPORTATION
HIGHWAYS DIVISION

ROADWAY PLAN

QUEEN KAAHUMANU HWY RESURFACING
HONOKOHAU TO KEAHOLE
F. A. Project No. STP-019-1(18)

Scale: 1"=40' Date: Feb., 1995

SHEET No. 7 OF 8 SHEETS

ORIGINAL PLAN	DATE
SURVEY PLOTTED BY	
DRAWN BY	
DESIGNED BY	
QUANTITIES BY	
CHECKED BY	

"AS-BUILT"

FED. ROAD DIST. NO.	STATE	FED. AID PROJ. NO.	FISCAL YEAR	SHEET NO.	TOTAL SHEETS
HAWAII	HAW.	STP-019-1(18)	1995	13	30

Sta. 237+50 to # Sta. 241+35 Rt.

Extend 12-ft. wide Deceleration Lane

Estimated Quantities:

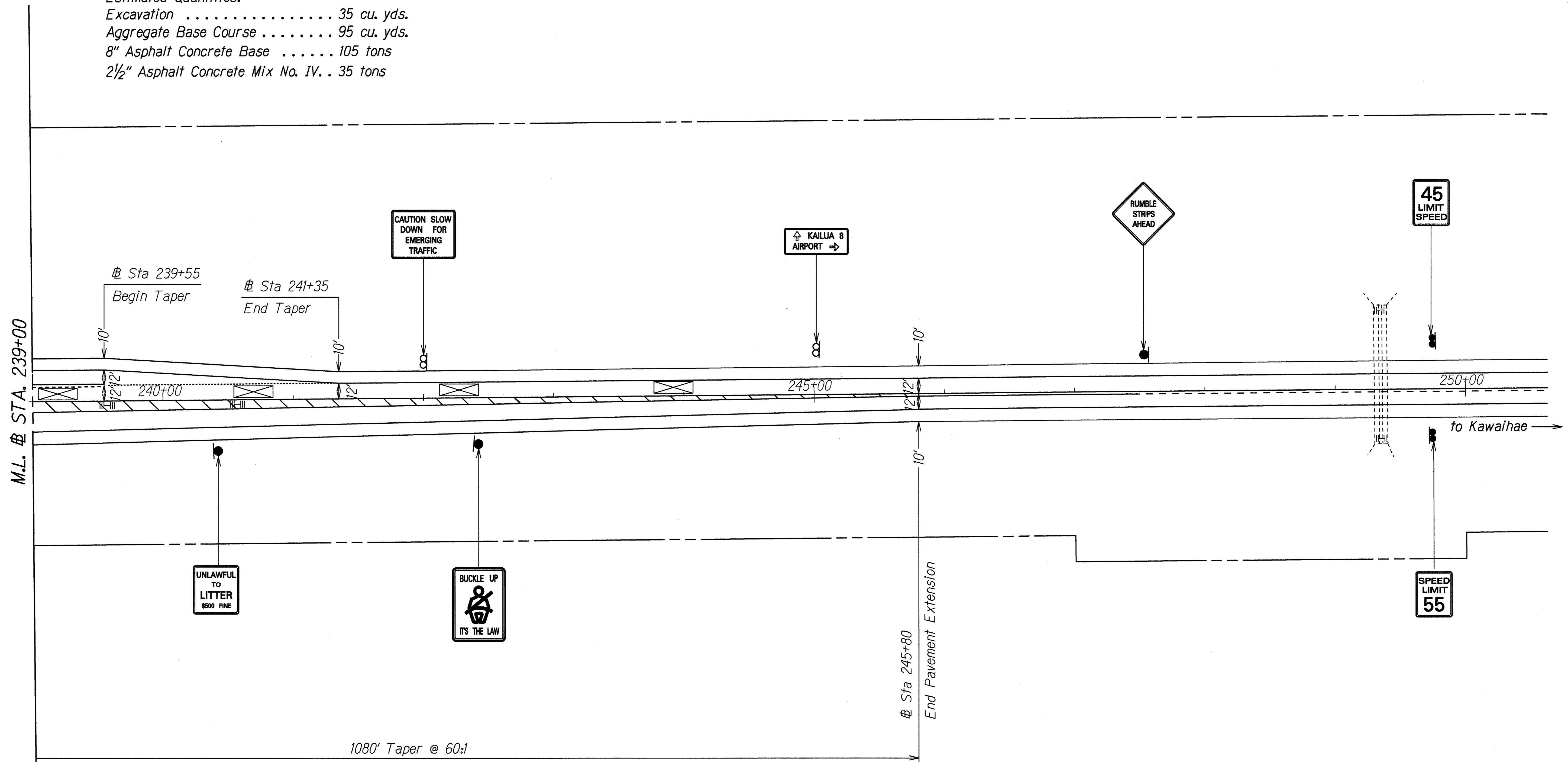
Excavation 35 cu. yds.

Aggregate Base Course 95 cu. yds.

8" Asphalt Concrete Base 105 tons

2 1/2" Asphalt Concrete Mix No. IV. . 35 tons

TRUE NORTH
SCALE : 1" = 40'



ORIGINAL PLAN	SURVEY PLOTTED BY	DATE
NOTES BOOK	DRAWN BY X	3-15-94
N. 491488	TRACED BY X	
	QUANTITIES BY	
	CHECKED BY	

STATE OF HAWAII
DEPARTMENT OF TRANSPORTATION
HIGHWAYS DIVISION

ROADWAY PLAN

QUEEN KAAHUMANU HWY RESURFACING
HONOKOHAU TO KEAHOLE
F. A. Project No. STP-019-1(18)

Scale: 1"=40' Date: Feb, 1995

SHEET No. 8 OF 8 SHEETS