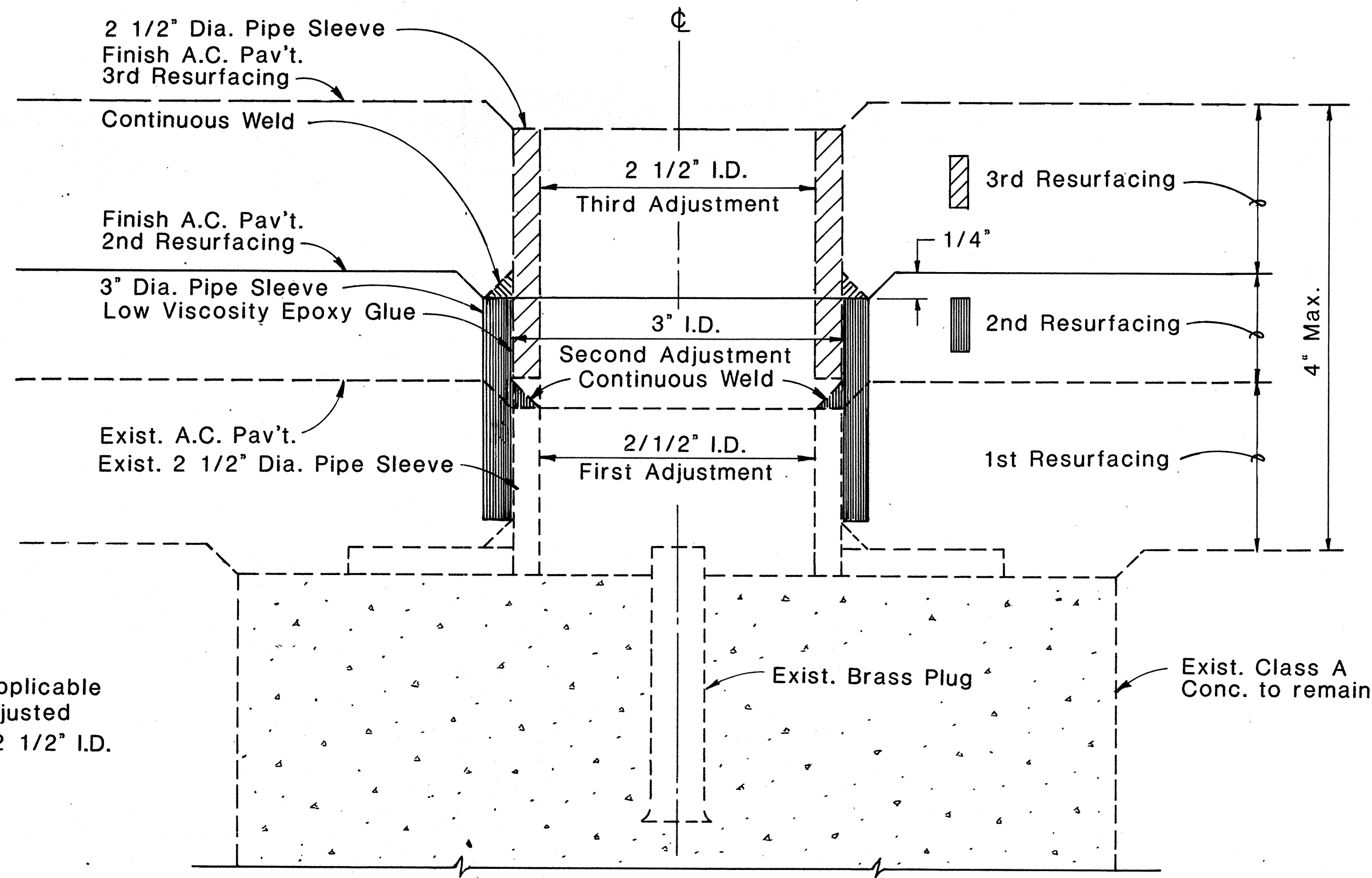


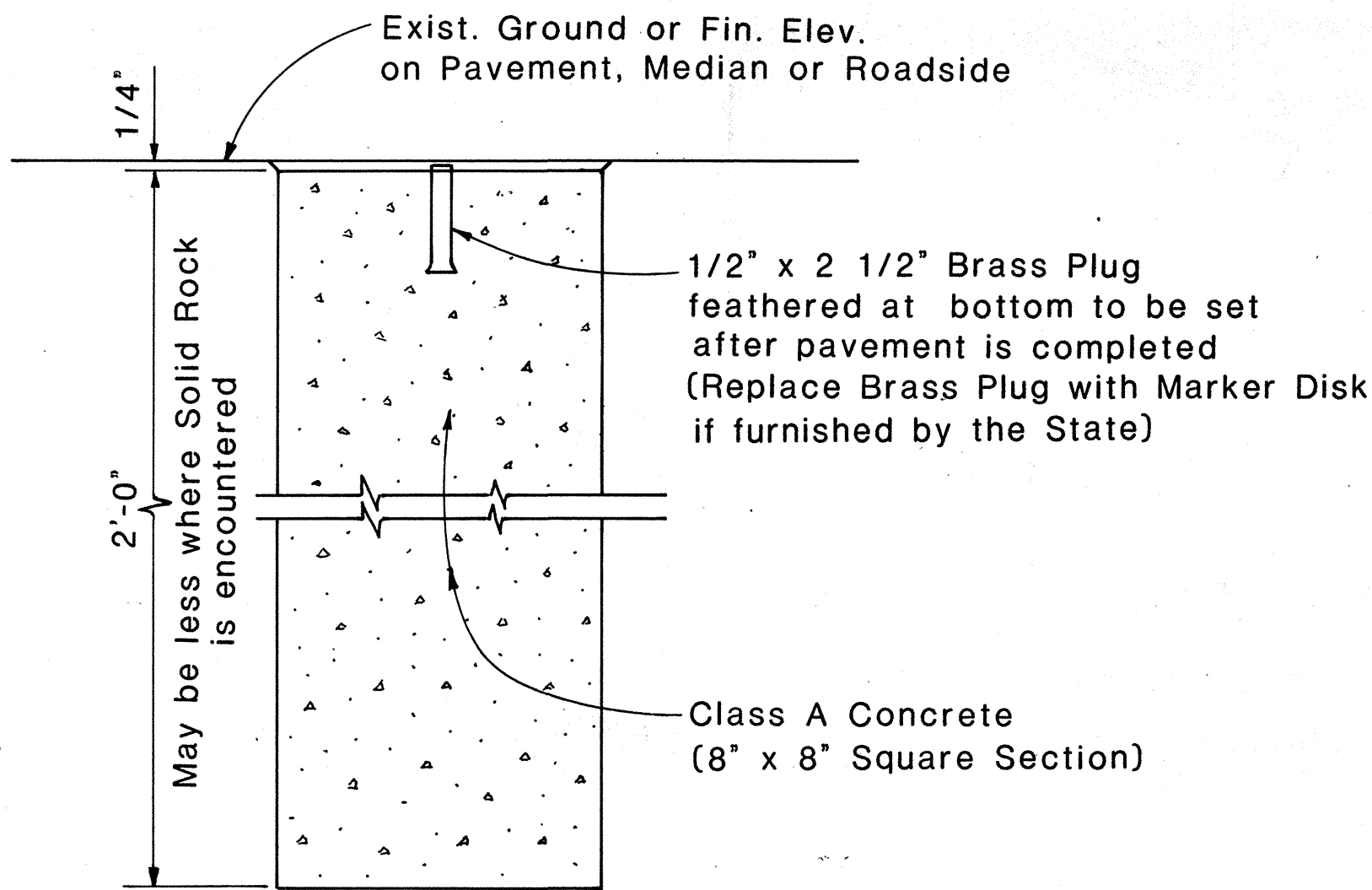
FED. ROAD DIST. NO.	STATE	PROJ. NO.	FISCAL YEAR	SHEET NO.	TOTAL SHEETS
HAWAII	HAW.	19J-03-85M	1985	5	9



NOTE:
This detail is applicable only if initial adjusted pipe sleeve is 2 1/2" I.D.

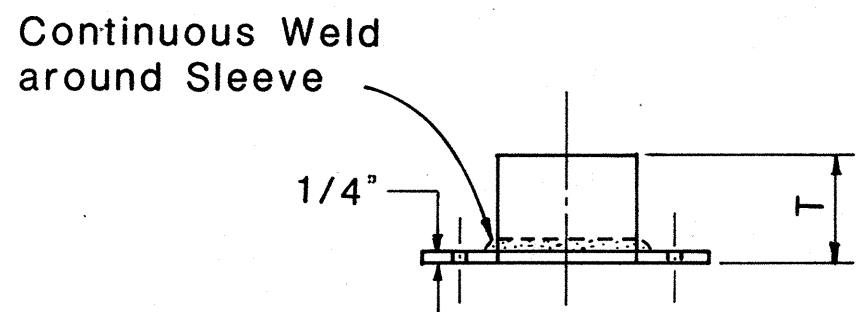
DETAIL FOR CENTERLINE MONUMENT (2ND & 3RD) ADJUSTMENTS

FULL SIZE

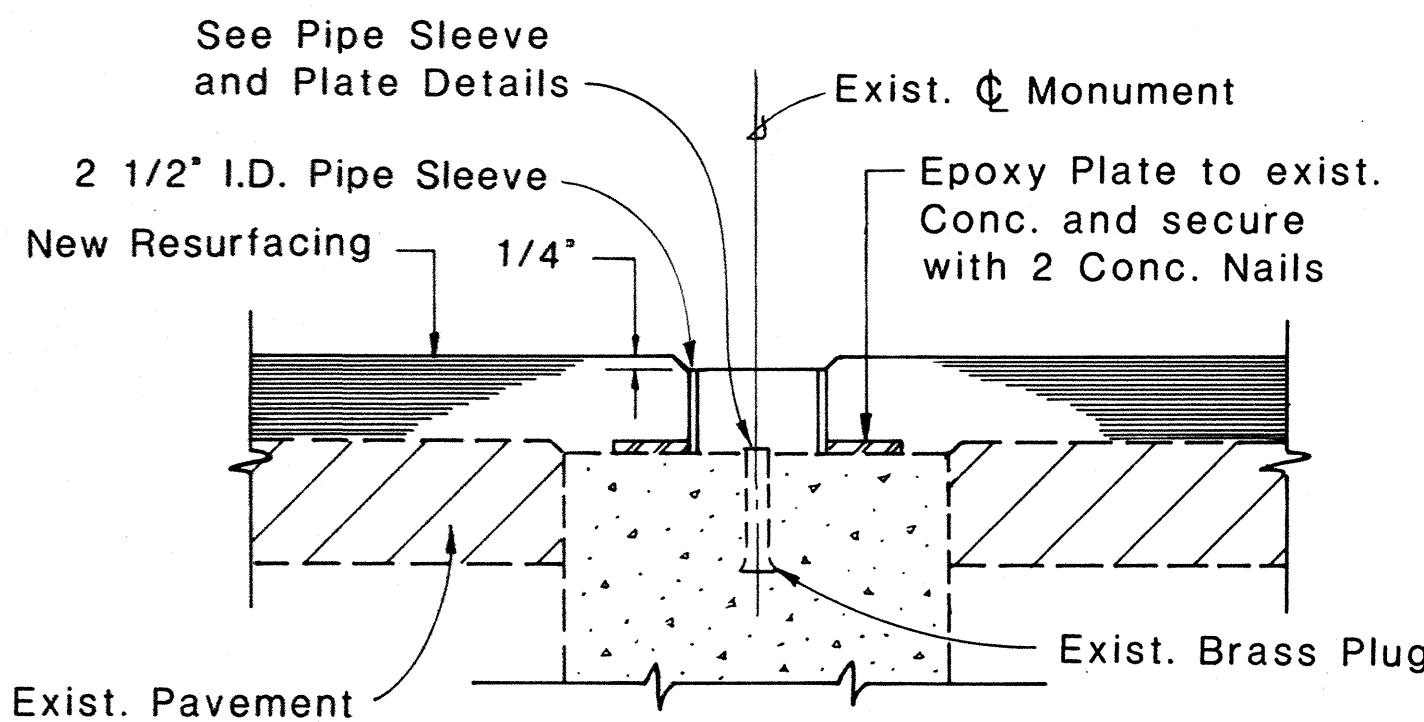


DETAIL FOR CENTERLINE & REFERENCE SURVEY MONUMENT

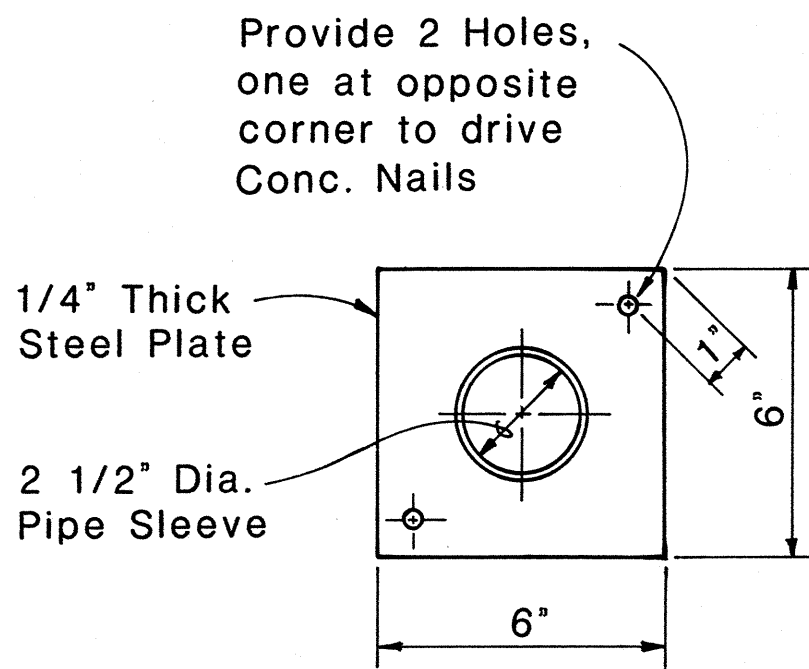
Scale: 1 1/2" = 1'-0"



PIPE SLEEVE & PLATE ELEVATION



SECTION THRU MONUMENT



PIPE SLEEVE & PLATE PLAN

NOTE
These Adjustment Details also apply to Centerline Monuments utilized as Stationline Reference Points.

DETAILS FOR ADJUSTED CENTERLINE MONUMENT

Scale: 3" = 1'-0"

APPROVAL RECOMMENDED:

Mike Mima 6-20-83
HIGHWAY DESIGN ENGINEER DATE

APPROVED:
Ed Fujiyama 6-22-83
ASSISTANT CHIEF, ENGINEERING DATE

NO.	REVISION	APPROVED	
		BY	DATE
1	Delete Note No. 1	<i>HT</i>	11-19-84

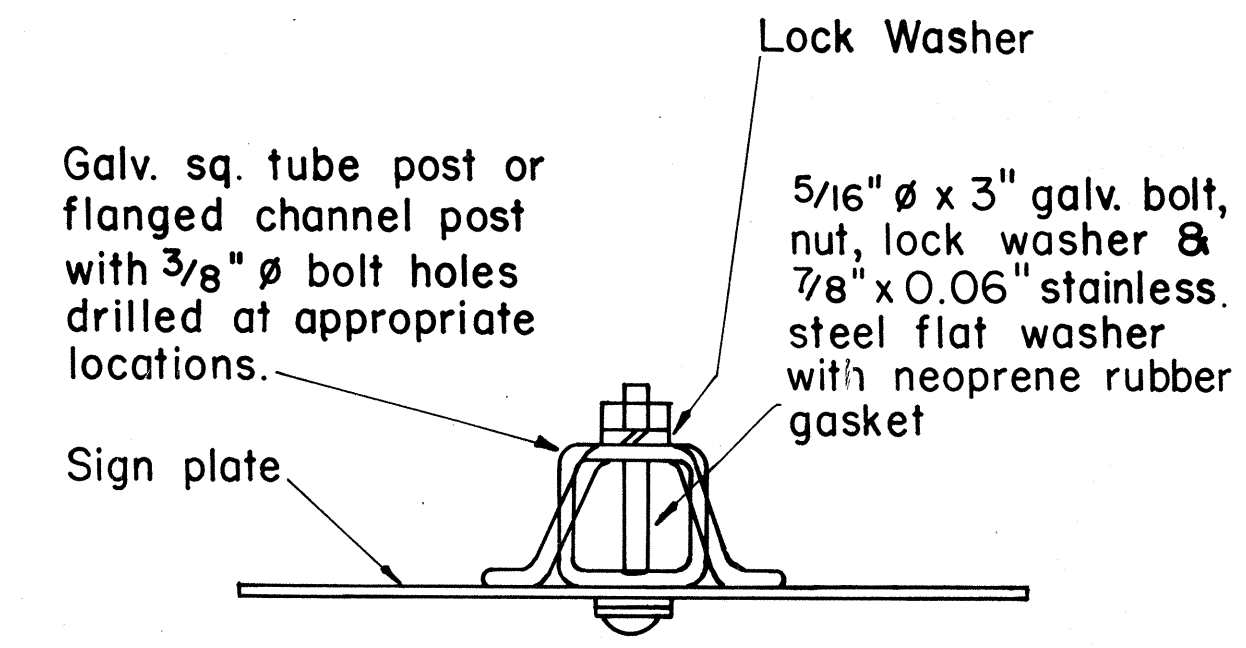
STATE OF HAWAII DEPARTMENT OF TRANSPORTATION HIGHWAYS DIVISION	
STANDARD DETAILS	
CENTERLINE AND REFERENCE SURVEY MONUMENT	
Scale: As Shown	Date: May, 1983
SHEET NO. 1 OF 5 SHEETS	

SURVEY PLOTTED BY	DATE
DRAWN BY	
TRACED BY	
QUANTITIES BY	
CHECKED BY	
ORIGINAL PLAN	
NOTE BOOK	
NO.	

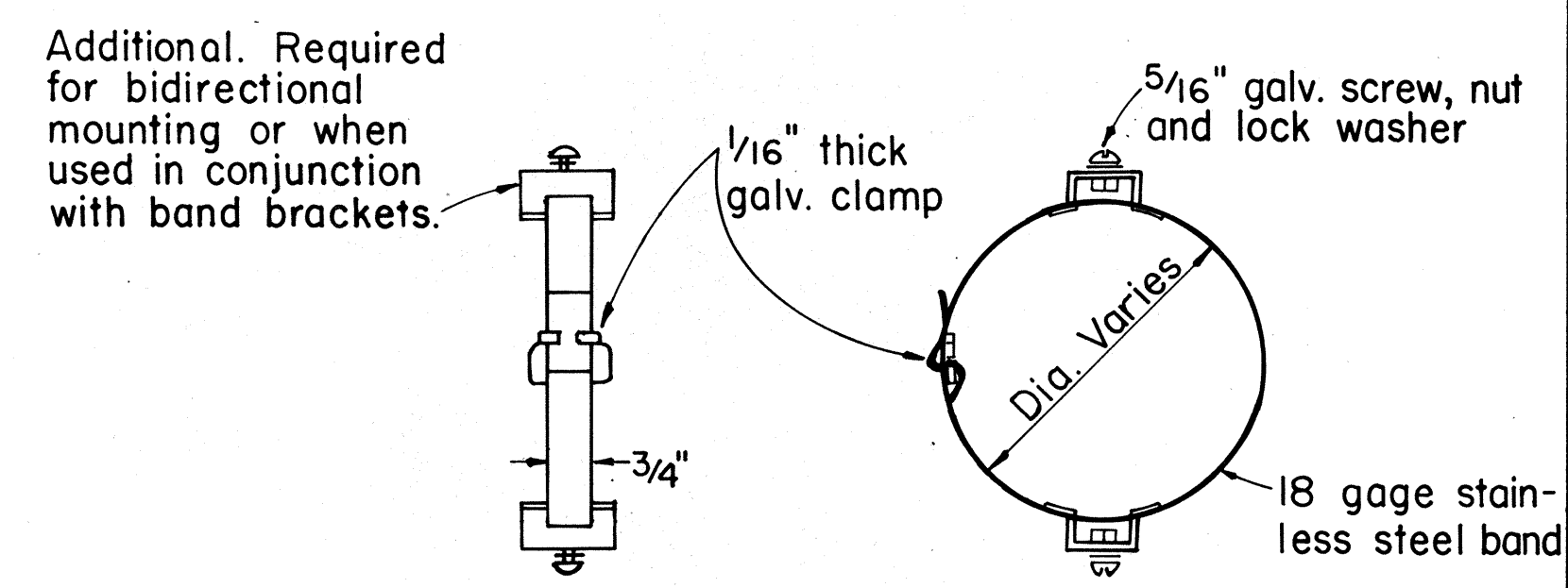
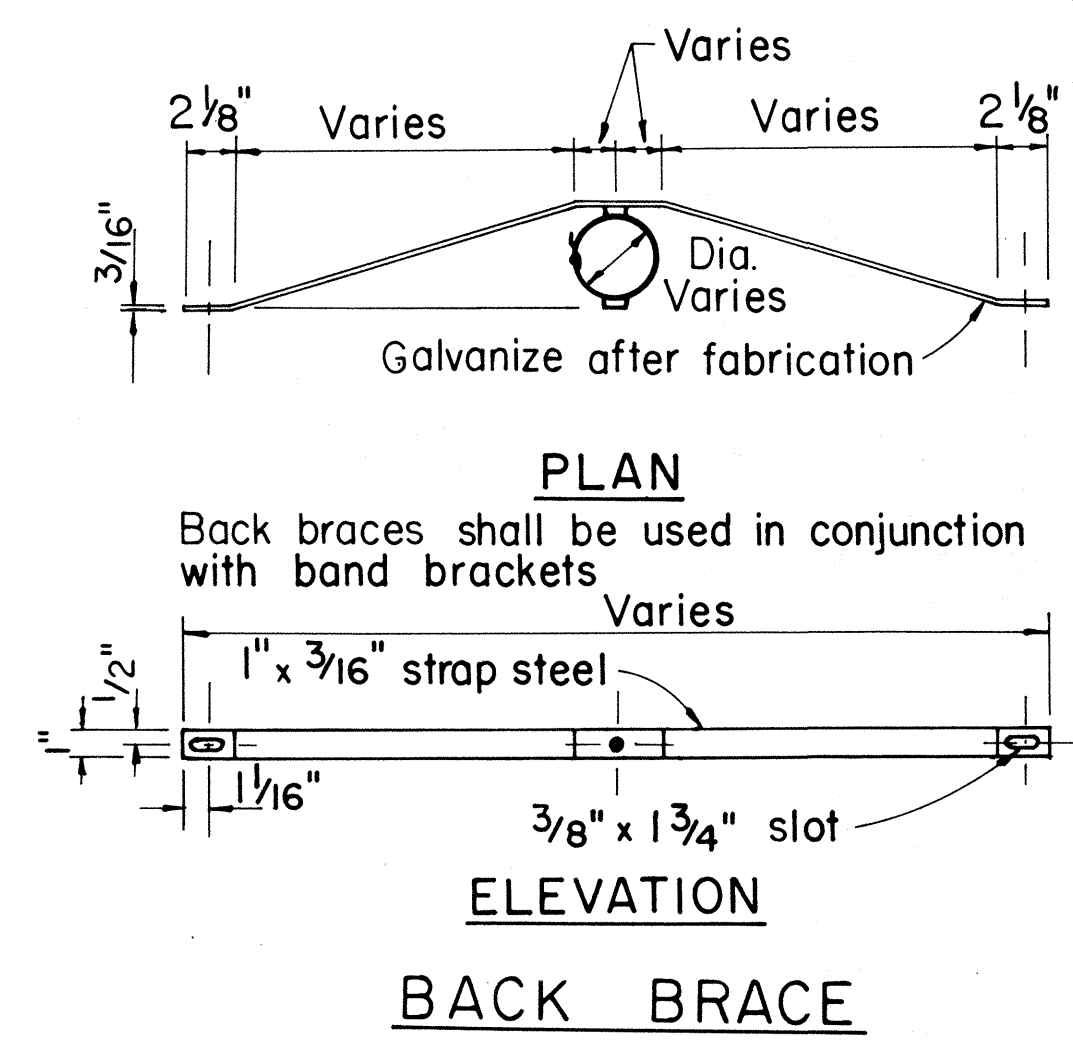
FED. ROAD DIST. NO.	STATE	PROJ. NO.	FISCAL YEAR	SHEET NO.	TOTAL SHEETS
HAWAII	HAW.	19J-03-85M	1985	6	9

GENERAL NOTES

- Signs shall be placed in conformance with positions shown and described in the "Manual on Uniform Traffic Control Devices for Streets and Highways", 1978, Part II, Section 2A-2I, as amended, and as supplemented herein.
- Sign 48" and wider or larger than 10 sq. ft. in area shall be mounted on two or more sign posts except as noted below.
- Signs 48" and wider or larger than 10 sq. ft. in area may be mounted on objects other than sign posts (i.e. on highway lighting poles) as follows:
 - Signs 48" and wider but less than 10 sq. ft. in area shall be mounted with a minimum of two sets of band bracket and back braces.
 - Signs larger than 10 sq. ft. and less than 28 sq. ft. in area shall be mounted with a minimum of two sets of band brackets and back braces.
 - Signs larger than 28 sq. ft. in area shall be mounted with a minimum of three sets of band bracket and back braces.
- All parking restriction signs with arrows shall be mounted 45° to the line of traffic flow.
- Sign posts shall extend 3 1/2" above each sign, where required, for attachment of City and County street name signs.
- (R) or (L) indicates right or left and shown on the plans.
- See plans for special details of signs along bikeways.
- The minimum lateral distances shown are guidelines and shall be exceeded whenever possible. The Contractor shall place signs at the maximum practical lateral distance from the edge of the traveled way up to 30 feet and shall utilize protected locations whenever possible. Final locations of all signs shall be approved by the Engineer.
- Signs in medians shall be placed at midpoint of median up to a maximum distance of 30 feet from the edge of traveled way. When appropriate, signs for opposing directions shall be placed back to back.
- Anchor bases shall be installed for all signpost installations, unless otherwise shown or directed. See sheets DT 100A and DT 100B.



GALVANIZED SQUARE TUBE OR FLANGED CHANNEL POST



BAND BRACKET

APPROVAL RECOMMENDED:
Eiichi Tanaka 10/14/83
 TRAFFIC ENGINEER DATE

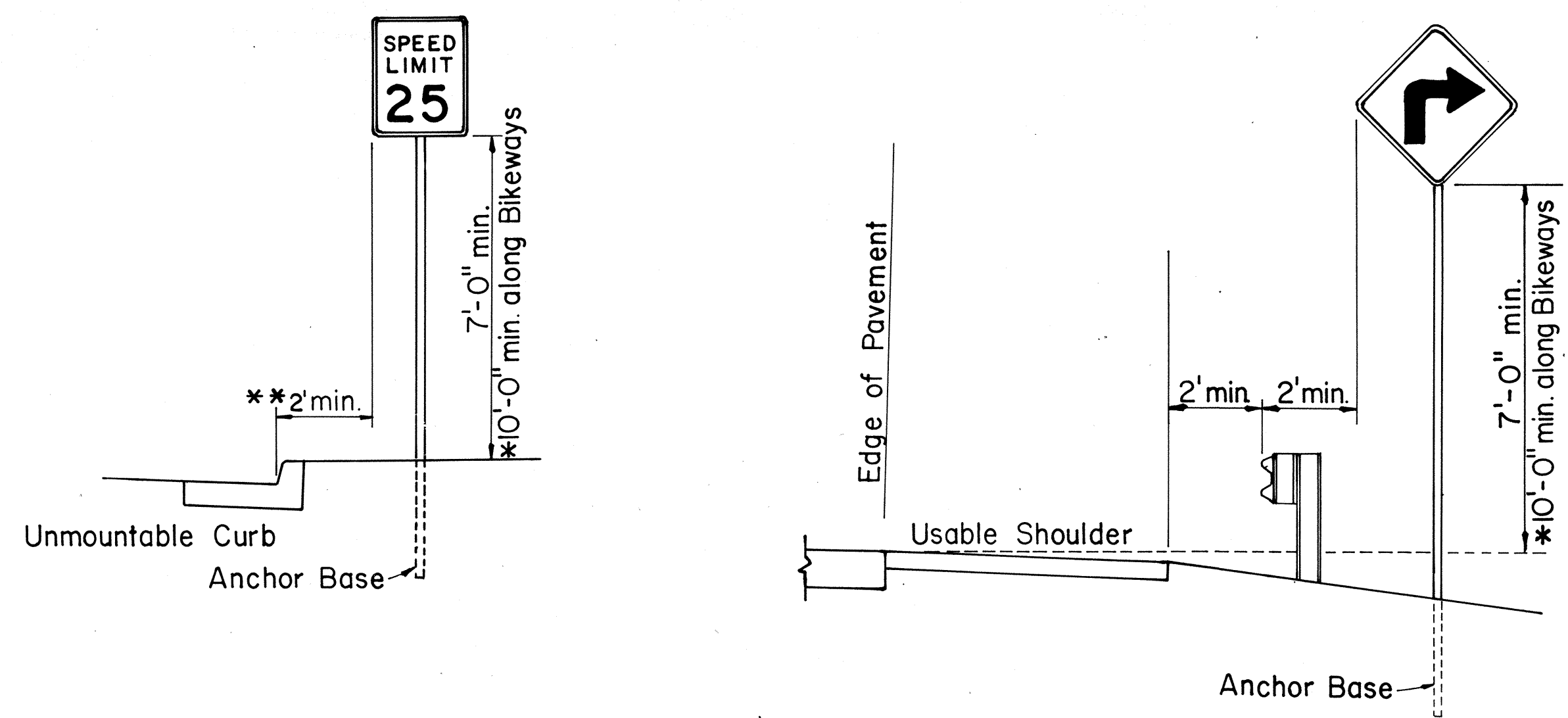
APPROVED:
H. Fujiyama 10-18-83
 ASSISTANT CHIEF, ENGINEERING DATE

STATE OF HAWAII
 DEPARTMENT OF TRANSPORTATION
 HIGHWAYS DIVISION
 STANDARD DETAILS
 MISCELLANEOUS SIGN DETAILS

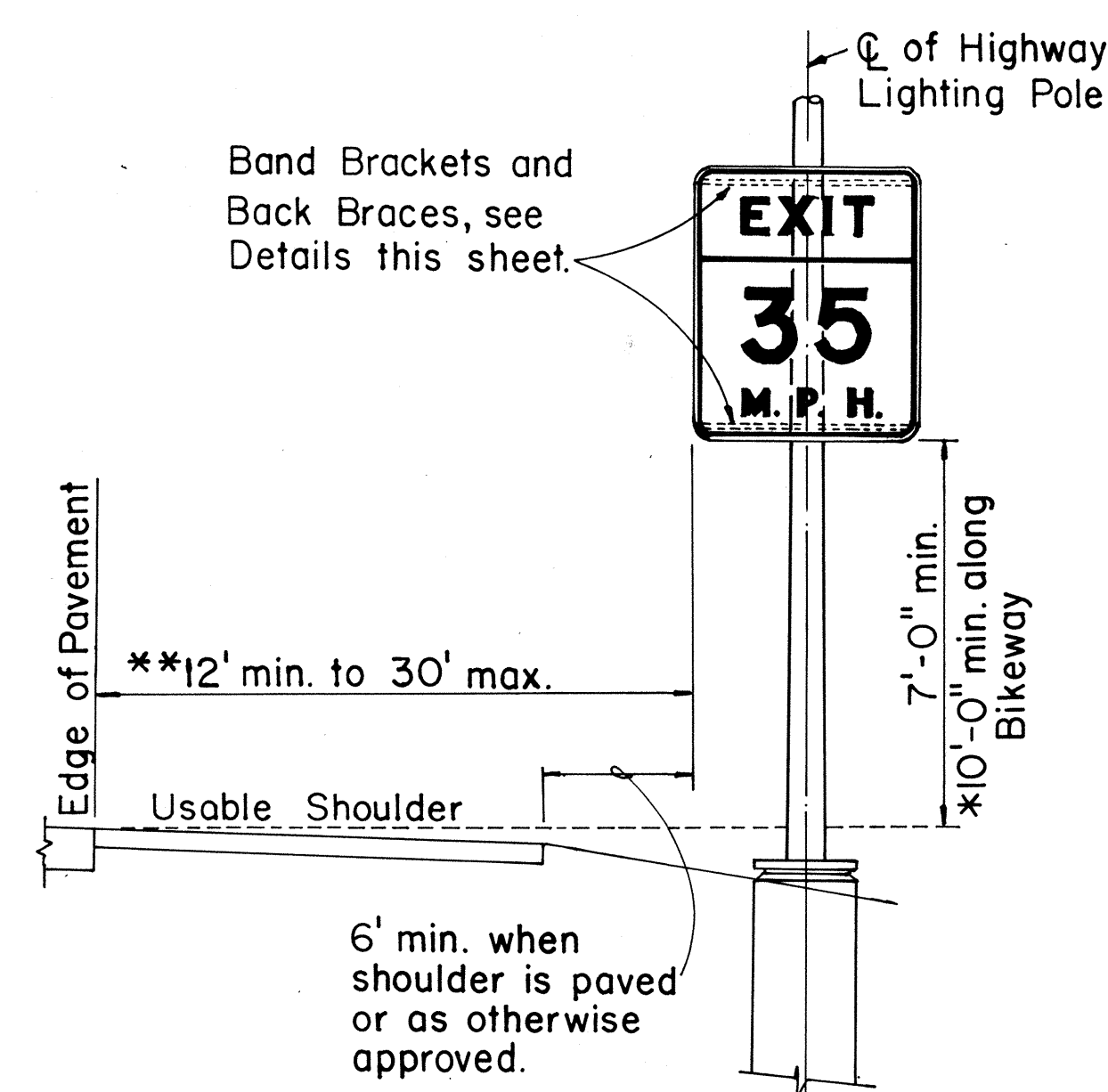
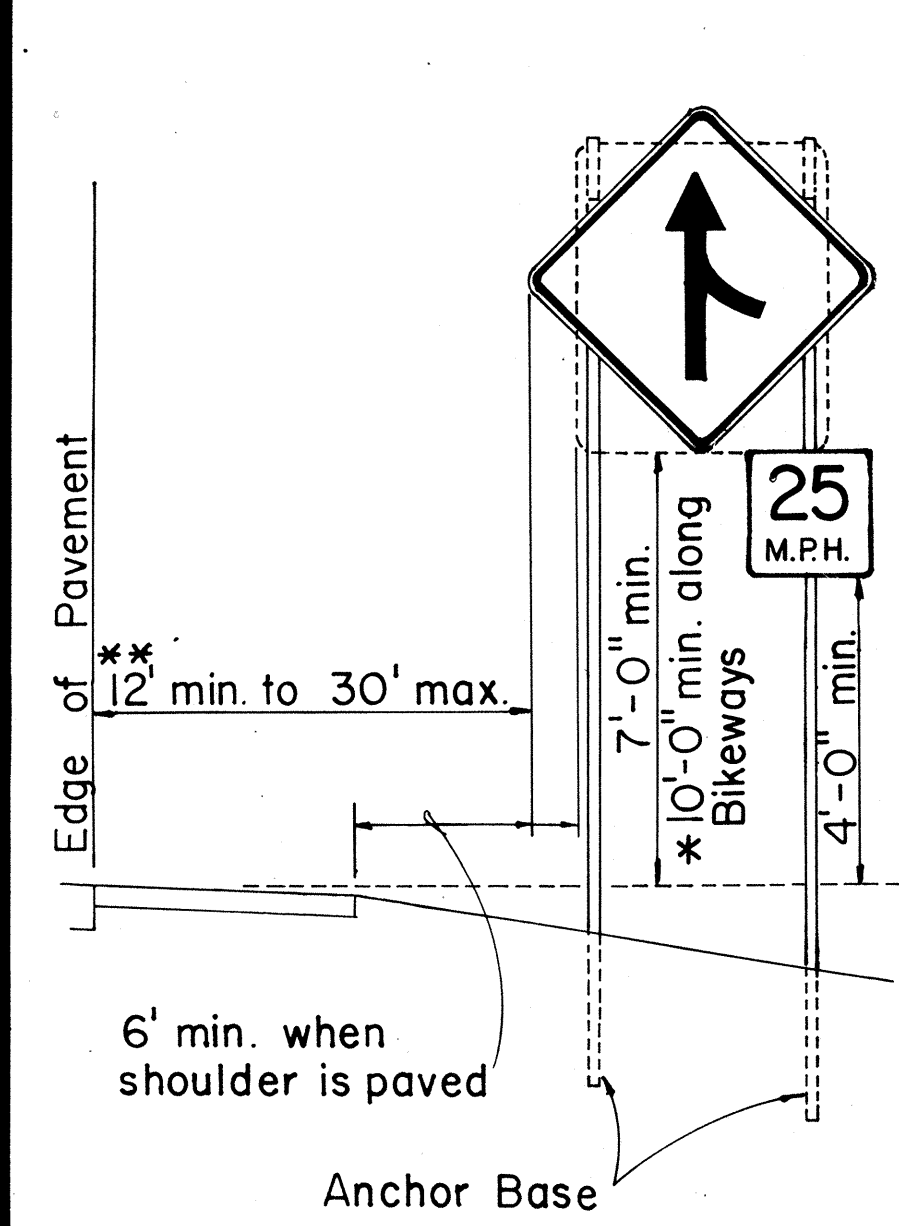
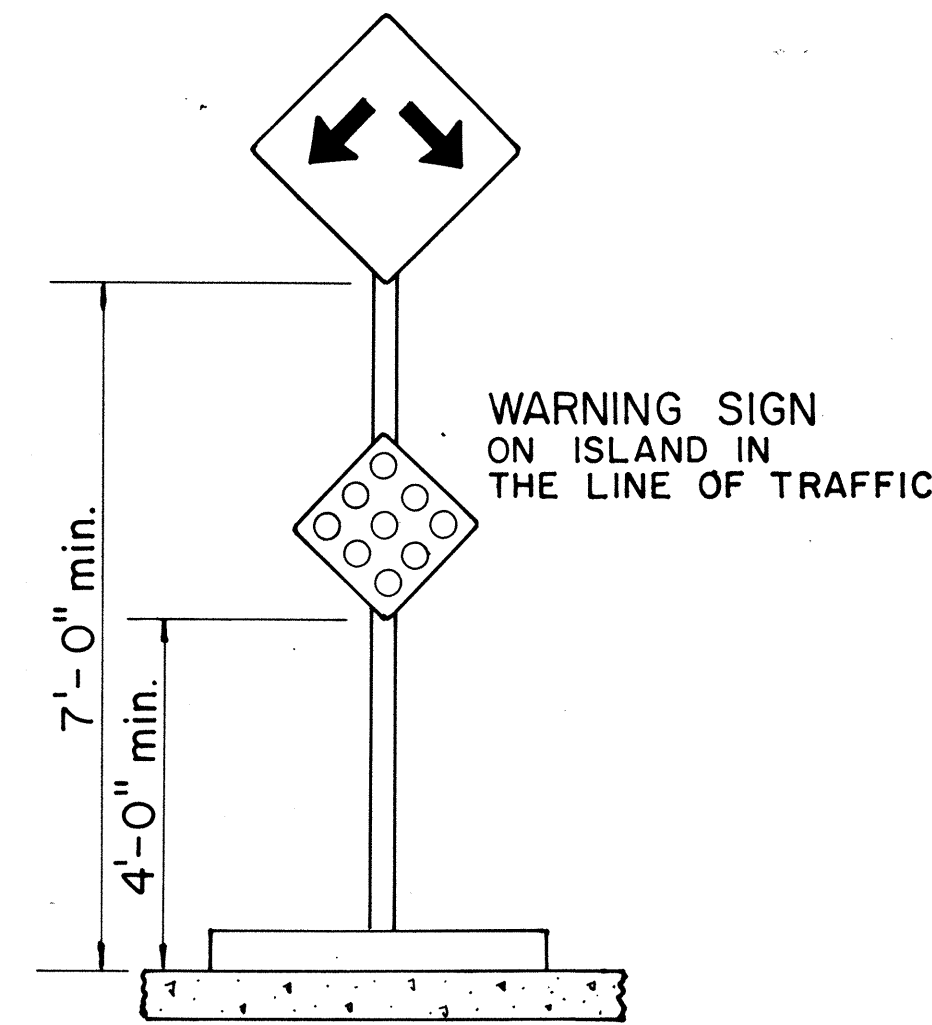
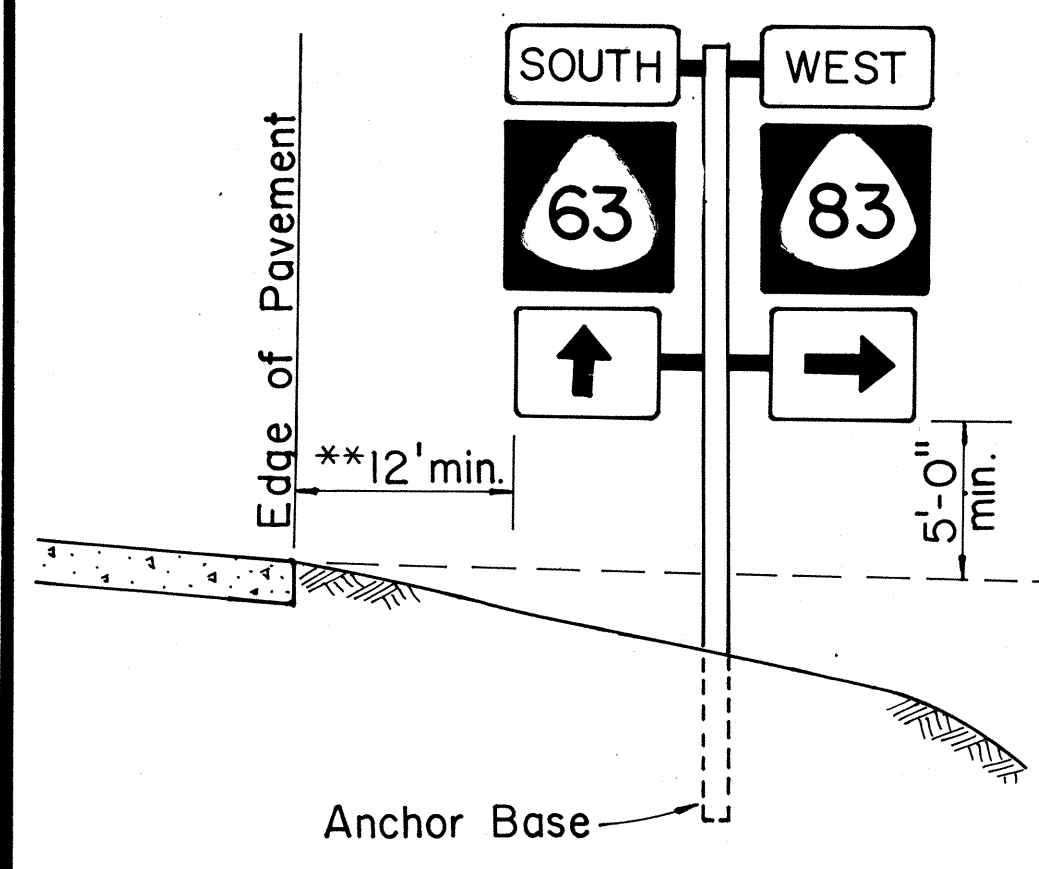
Not to Scale: Oct. 1983
 SHEET No. 2 OF 5 SHEETS DT 100

TYPICAL MOUNTING DETAILS

NO.	REVISION	APPROVED BY	DATE
1	Supersedes Sht. DT 100 approved 11/15/77	<i>[Signature]</i>	10-18-83



ROADSIDE ASSEMBLY RURAL DISTRICT



HEIGHT AND LATERAL LOCATION OF SIGNS TYPICAL INSTALLATION

ORIGINAL PLAN	DATE
DESIGNED BY	
TRACED BY	
NOTE BOOK	
QUANTITIES BY	
CHECKED BY	
NO.	

FED. ROAD DIST. NO.	STATE	PROJ. NO.	FISCAL YEAR	SHEET NO.	TOTAL SHEETS
HAWAII	HAW.	191-03-85M	1985	7	9



CW 20-1a 48" x 48"



CW 20-2d 48" x 48"



CW 20-3b 48" x 48"



CW 20-4d 48" x 48"



CW 20-5d(L) 48" x 48"



CW 20-7c 48" x 48"



CW 21-1 30" x 30"



CW 21-2 30" x 30"



CW 21-3 36" x 36"



CW 21-4 36" x 36"



CW 21-5 30" x 30"



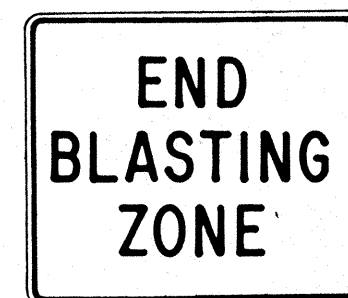
CW 21-6 30" x 30"



CW 22-1b 48" x 48"



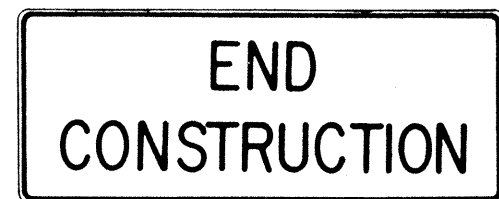
CW 22-2 42" x 36"



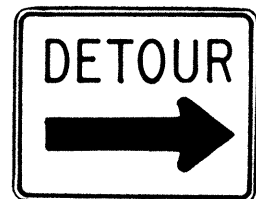
CW 22-3 42" x 36"



CG 20-1(5) 60" x 36"



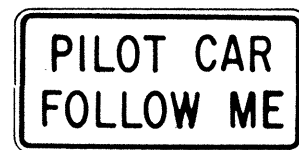
CG 20-2 60" x 24"



CM 4-9(R) 30" x 24"



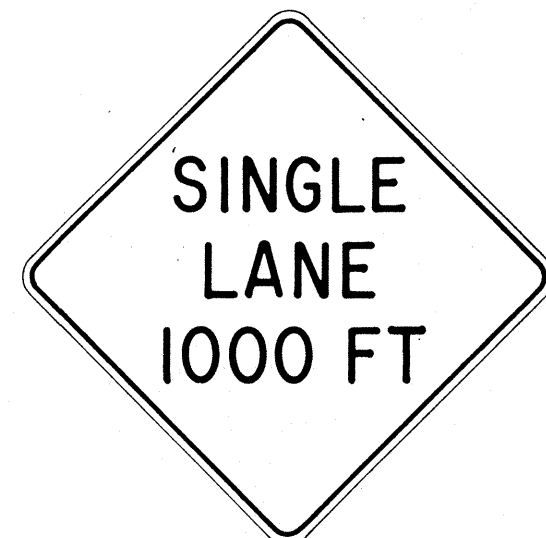
CM 4-10(R) 48" x 18"



CG 20-4 36" x 18"



CW 23-1 36" x 36"



CW 23-2b 48" x 48"



CW 23-3(R) 48" x 48"

GENERAL NOTES

- Sign details shall conform to the FHWA publications "Manual on Uniform Traffic Control Devices for Streets and Highways," 1971, and "Standard Highway Signs," 1972, and as amended.
- All construction signs shall be reflectorized.
- All construction signs shall have 3/8" bolt holes drilled at appropriate locations.
- Numerals in () indicates numerals to be inserted for sign message. (R) or (L) indicates right or left.
- For "CW" series signs, suffixes a,b,c and d are as follows:
a-1500 FT, b-1000 FT, c-500 FT and d-AHEAD.

NO.	REVISION	APPROVED BY	DATE
1	Supersedes Sht. DT 104 Approved 12-30-69	H.T.	3/23/72
2	Revised General Note 1	H.T.	10/16/74
3	Revised General Note 2	H.T.	9-16-75
4	Revised General Note 2 and sign CG 20-1(5)	H.T.	7-14-76

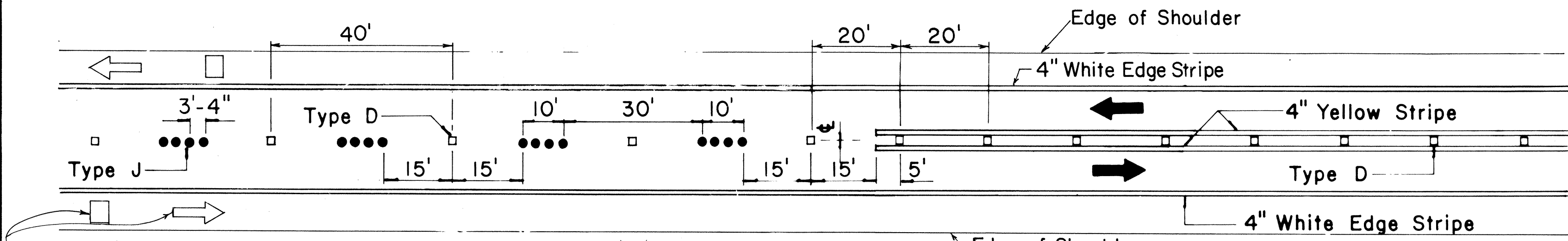
APPROVAL RECOMMENDED:
Erich Tanaka 3/21/72
TRAFFIC ENGINEER DATE

APPROVED:
William Sakai 3/23/72
ASSISTANT CHIEF, ENGINEERING DATE

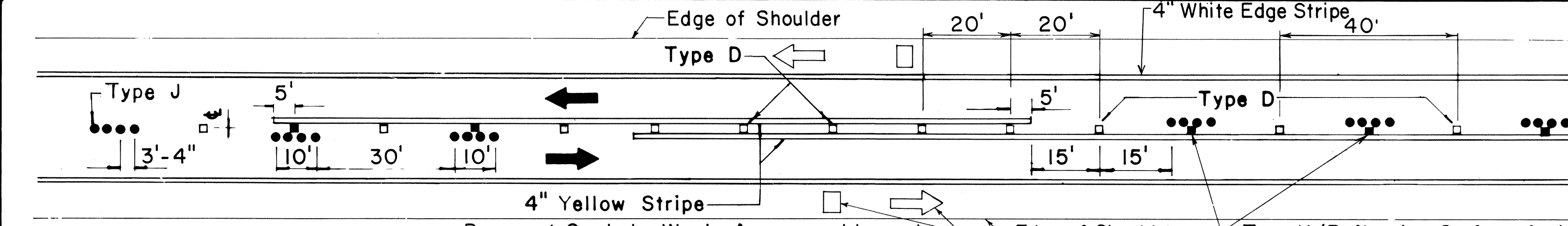
STATE OF HAWAII DEPARTMENT OF TRANSPORTATION HIGHWAYS DIVISION STANDARD DETAILS CONSTRUCTION SIGNS NOT TO SCALE SHEET No. 3 OF 5 SHEETS DT 104
--

ORIGINAL	SURVEY PLOTTED BY	DATE
PLAN	DESIGNED BY	
NOTE BOOK	QUANTITIES BY	
NO.	CHECKED BY	

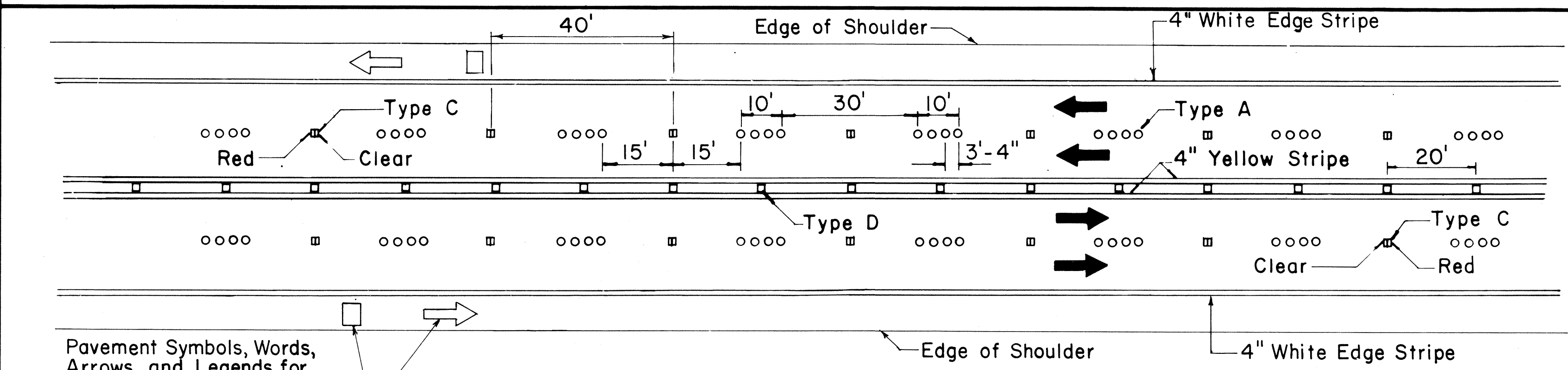
FED. ROAD DIST. NO.	STATE	PROJ. NO.	FISCAL YEAR	SHEET NO.	TOTAL SHEETS
HAWAII	HAW.	1910385M	1985	8	9



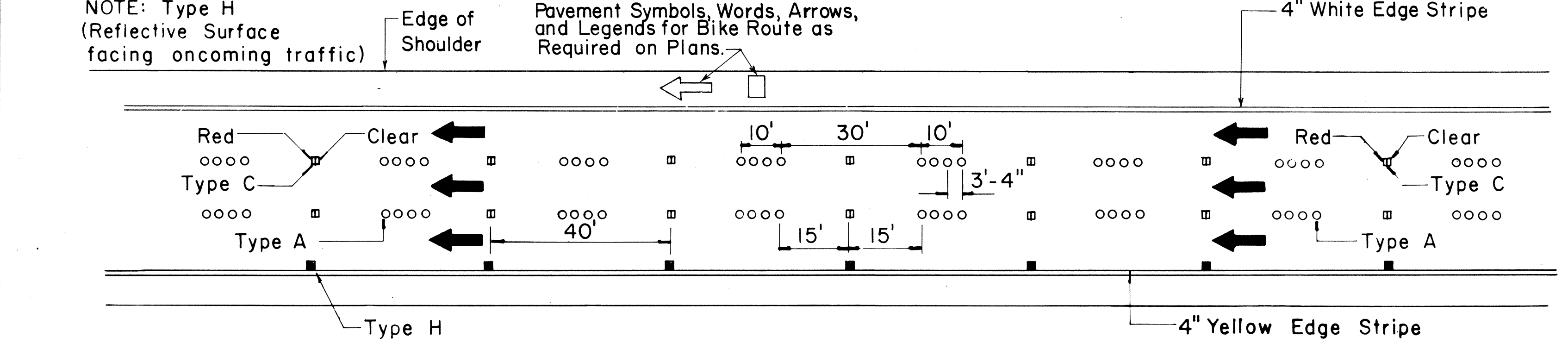
Pavement Symbols, Words, Arrows, and Legends for Bike Route as Required on Plans. **PASSING PERMITTED AND PASSING PROHIBITED**



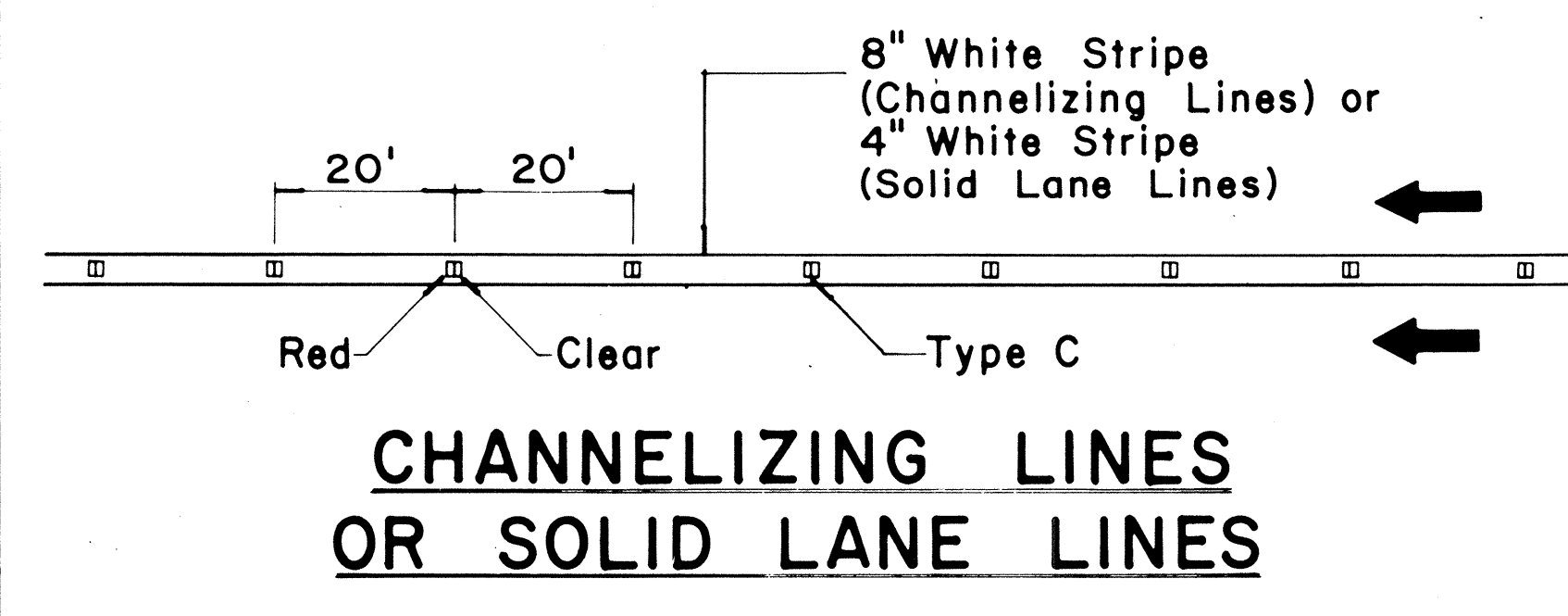
Pavement Symbols, Words, Arrows, and Legends for Bike Route as Required on Plans. **PASSING PROHIBITED ZONES**



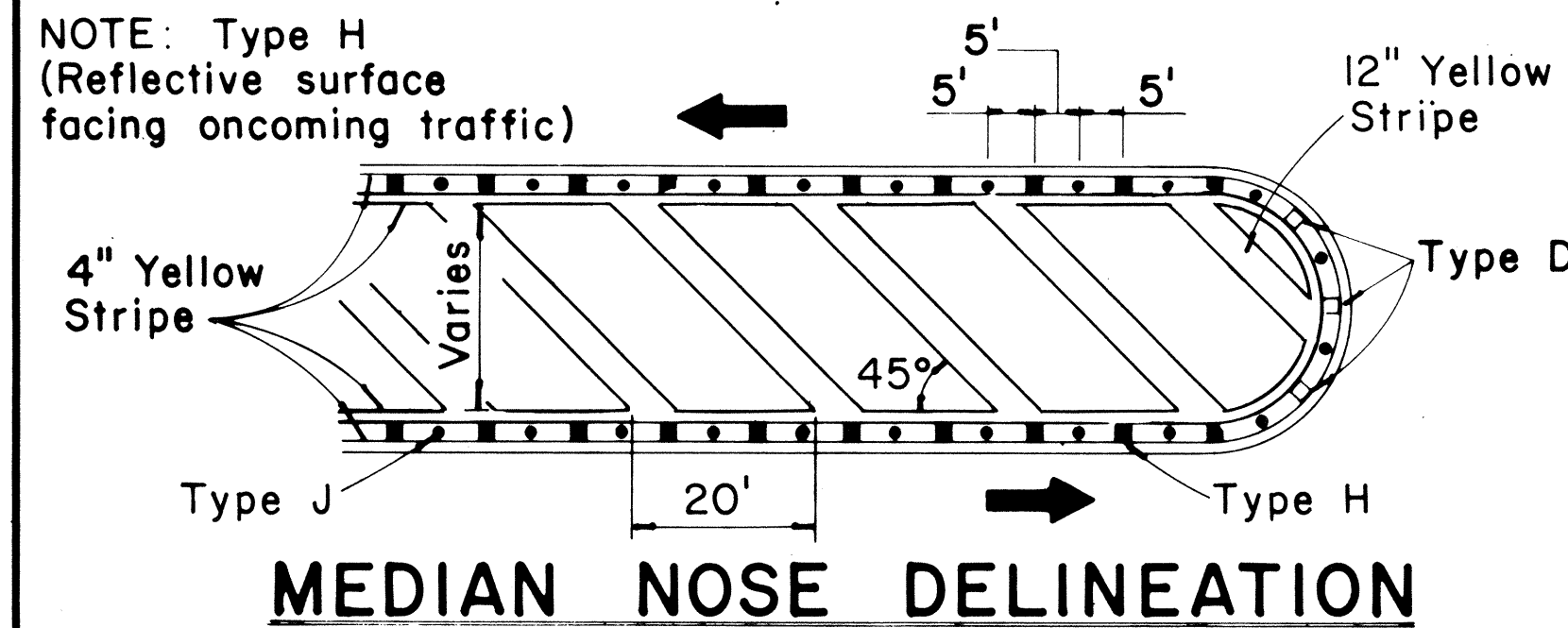
Pavement Symbols, Words, Arrows, and Legends for Bike Route as Required on Plans.



NOTE: Type H (Reflective Surface facing oncoming traffic) Pavement Symbols, Words, Arrows, and Legends for Bike Route as Required on Plans.



CHANNELIZING LINES OR SOLID LANE LINES



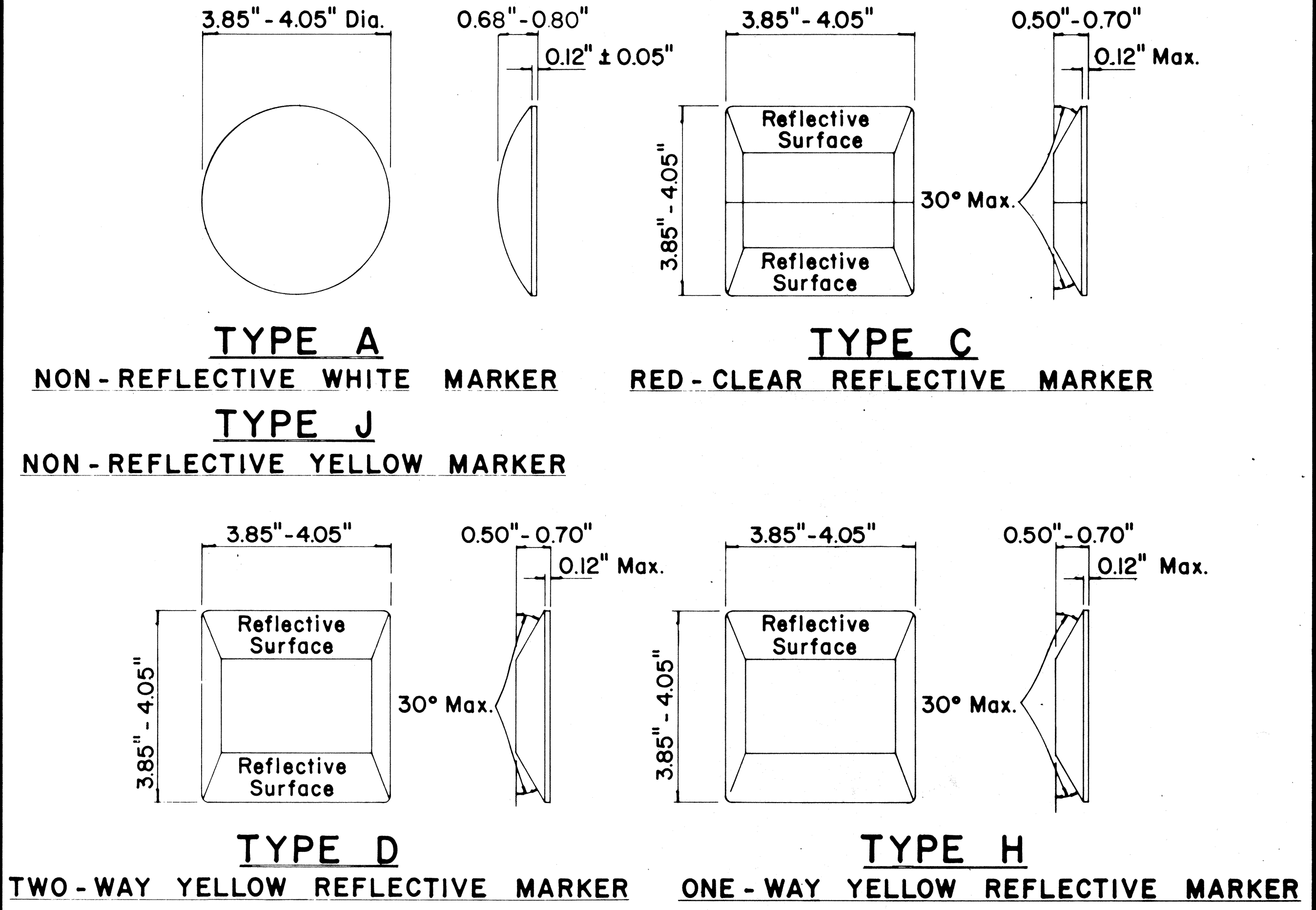
MEDIAN NOSE DELINEATION

TWO - LANE

MULTI - LANE

DIVIDED HIGHWAY AND FREEWAY

MISCELLANEOUS



GENERAL NOTES

1. Pavement marking and striping shall conform to the latest "Manual on Uniform Traffic Control Devices for Streets and Highways," and as amended.
2. Layout and installation of pavement marking and striping shall be done by the Contractor. The Contractor shall check the layouts with the Engineer prior to performing work.
3. Edge lines shall not be continued through intersections and shall not be broken for driveways unless otherwise shown or directed.

LEGEND

- Type A
- Type C
- Type D
- Type H
- Type J

APPROVAL RECOMMENDED:
Ericki Tanaka 7/21/78
 TRAFFIC ENGINEER DATE

APPROVED:
Herbert J. Zekich 1/24/78
 ASSISTANT CHIEF, ENGINEERING DATE

No.	REVISION	APPROVED BY	DATE
1	Supersedes DT 300 approved 11/18/71.	H.C.	1/24/78
2	Delete Type A Markers from Bike Route Delineation.	H.C.	10/15/79
3	Added General Note 3. Revised left edge stripe.	H.C.	9-28-83

STATE OF HAWAII
 DEPARTMENT OF TRANSPORTATION
 HIGHWAYS DIVISION

**STANDARD DETAILS
 RAISED PAVEMENT MARKERS
 AND STRIPING**

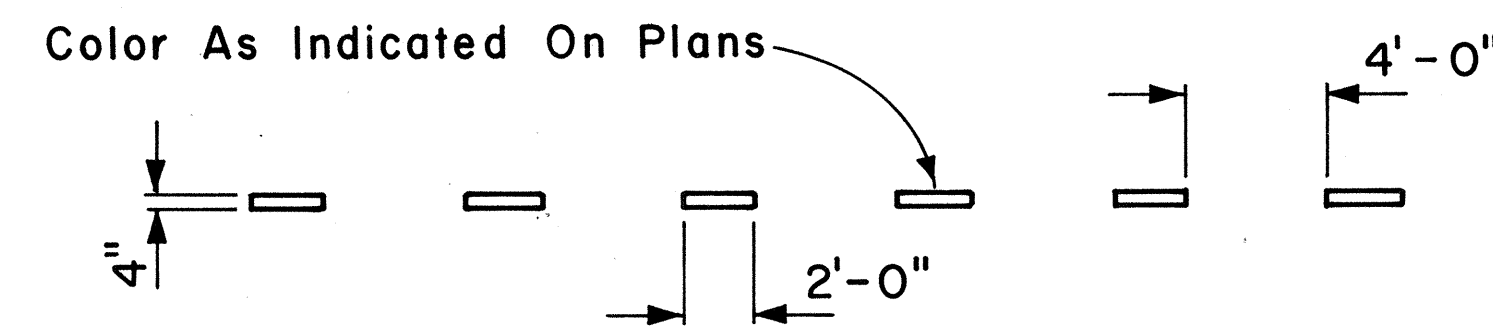
Not to Scale July 1978
 SHEET No. 4 OF 5 SHEETS DT 300

SURVEY PLOTTED BY	DATE
DRAWN BY	
DESIGNED BY	
QUANTITIES BY	
CHECKED BY	
ORIGINAL PLAN	
NOTE BOOK	
No.	

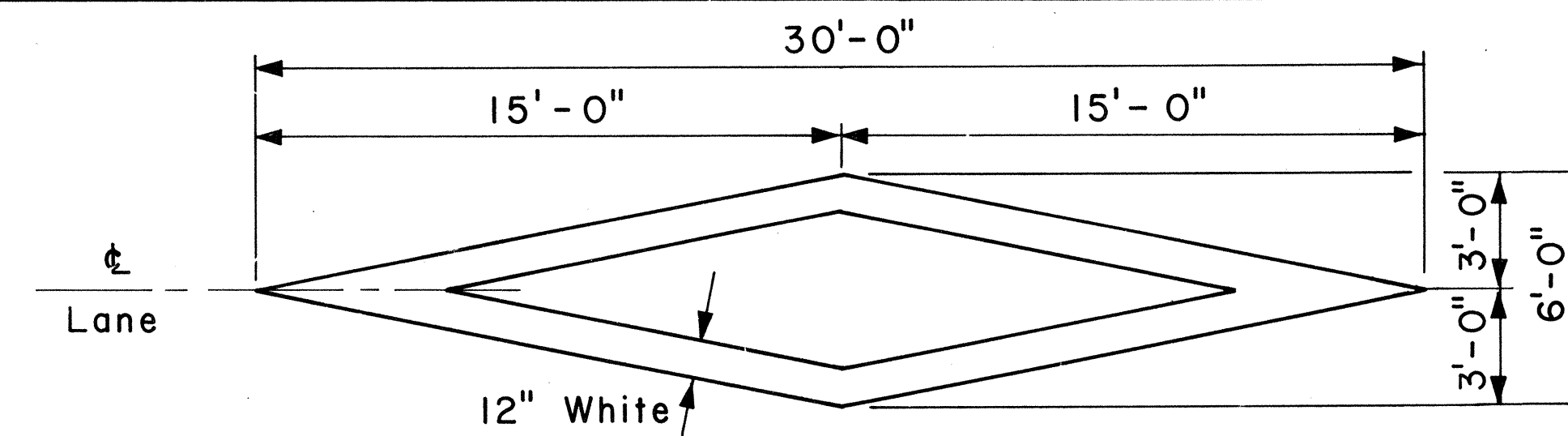
FED. ROAD DIST. NO.	STATE	PROJ. NO.	FISCAL YEAR	SHEET NO.	TOTAL SHEETS
HAWAII	HAW.	19-103-85M	1985	9	9

GENERAL NOTES:

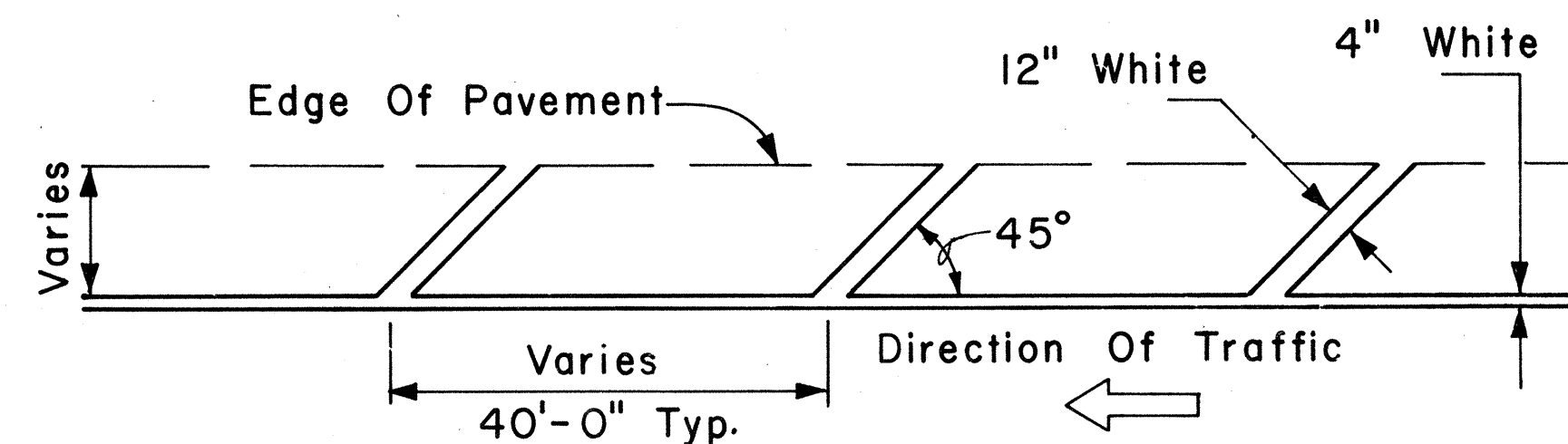
1. Pavement marking and striping shall conform to the latest edition of the "Manual on Uniform Traffic Control Devices for Streets and Highways," by the FHWA, and as amended.
2. Layout of pavement markings and striping shall be done by the Contractor. The Contractor shall check layout of markings and striping with the Engineer prior to performing work.
3. For additional pavement marking details, see sheet DT 300.



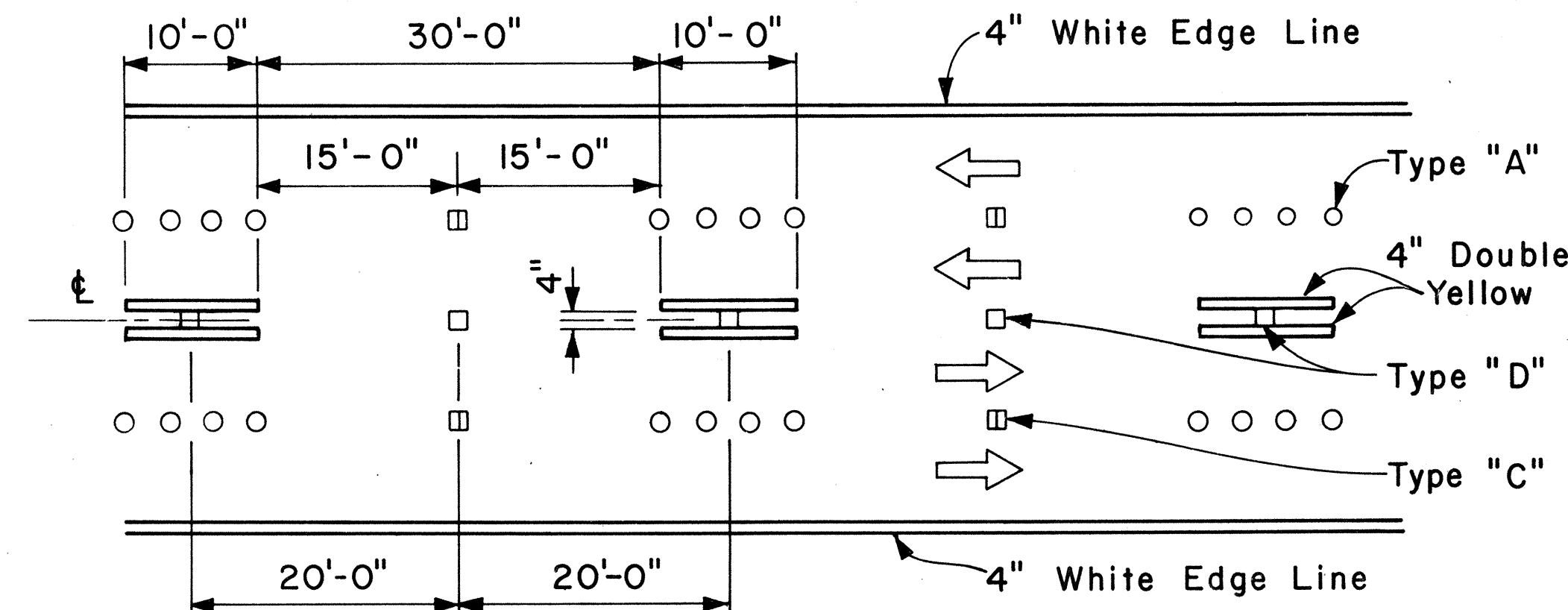
4" GUIDE LINE



PAVEMENT DIAMOND

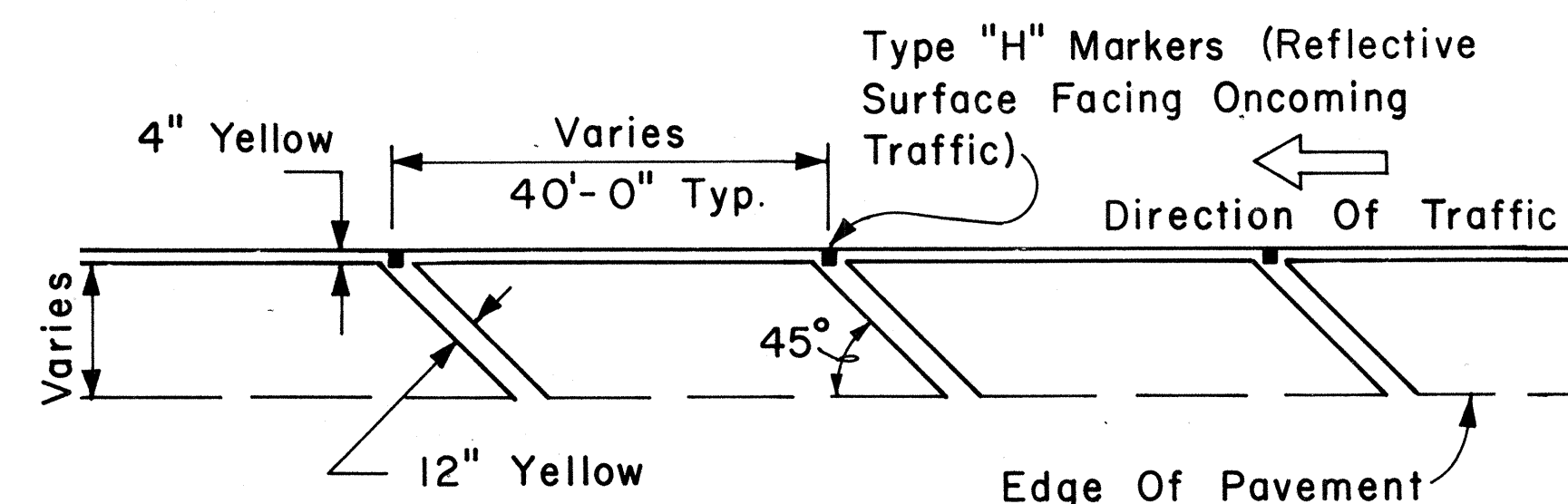


TRANSVERSE RIGHT SHOULDER MARKING

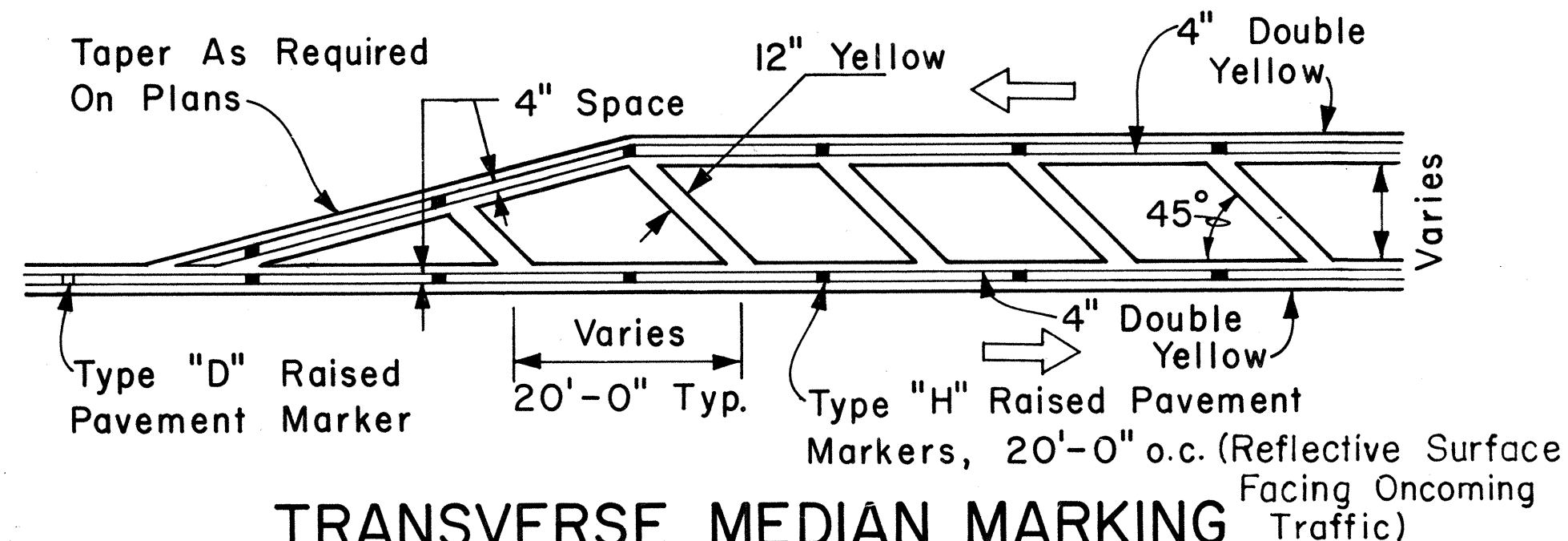


NOTE: Traffic Cone Usage Required.

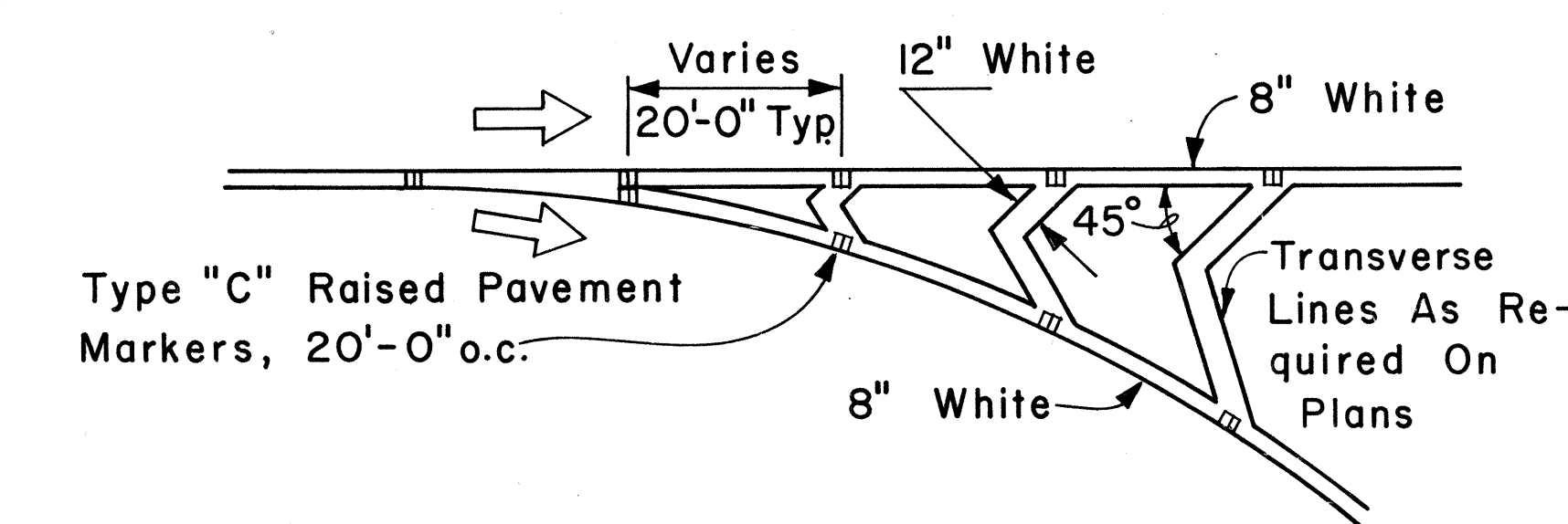
MULTI-LANE REVERSIBLE LANES



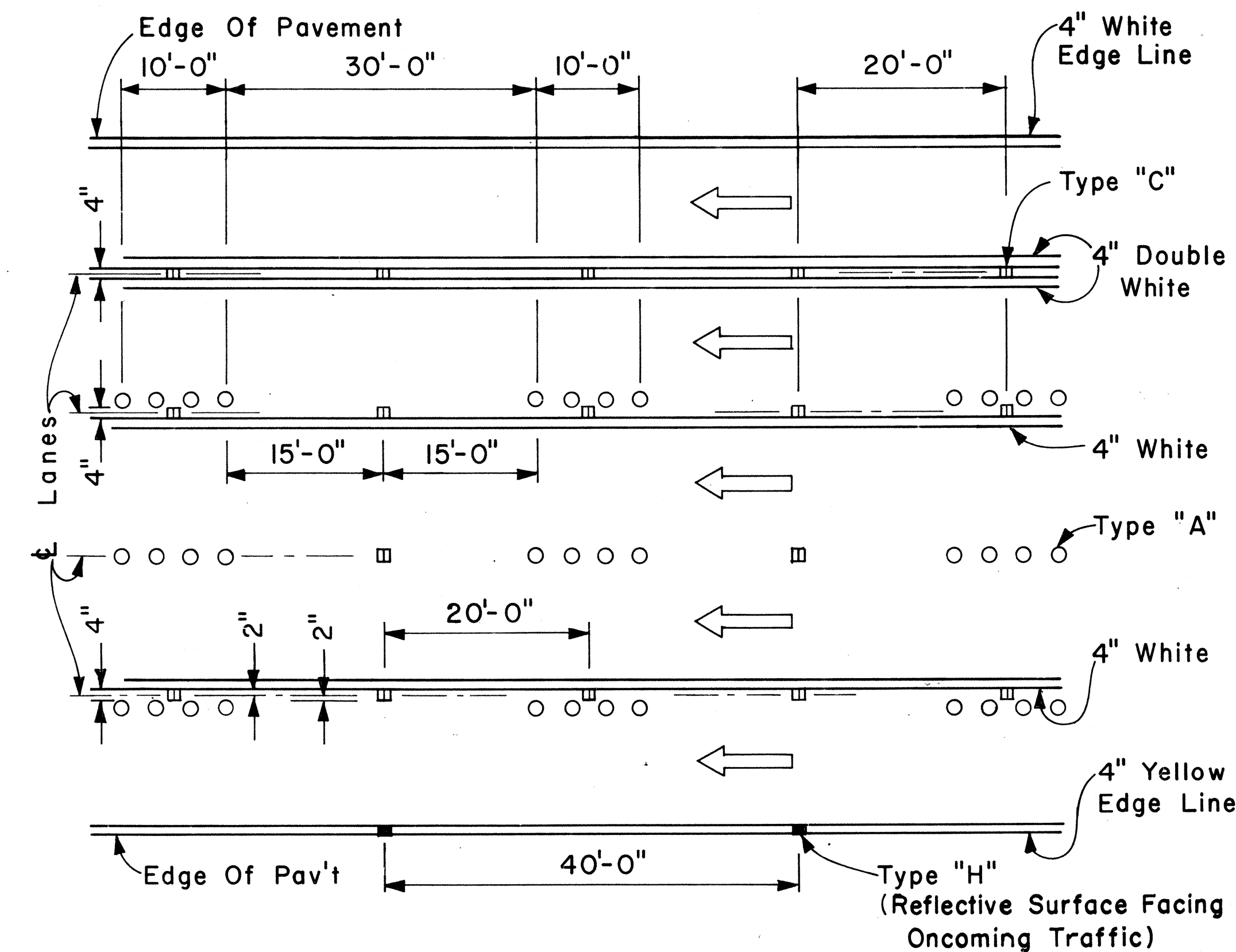
TRANSVERSE LEFT SHOULDER MARKING



TRANSVERSE MEDIAN MARKING



CHANNELIZING ISLAND



MULTI-LANE LANE CHANGE RESTRICTION ZONES

APPROVAL RECOMMENDED:
Eiichi Tanaka 5/2/78
 TRAFFIC ENGINEER DATE

APPROVED:
Shirley B. Zakeish 5/3/78
 ASSISTANT CHIEF, ENGINEERING DATE

NO.	REVISION	APPROVED BY	DATE

STATE OF HAWAII
 DEPARTMENT OF TRANSPORTATION
 LAND TRANSPORTATION FACILITIES DIVISION

STANDARD DETAILS

MISCELLANEOUS PAVEMENT MARKINGS

Scale: Not to Scale Date: April, 1978

SHEET NO. 5 OF 5 SHEETS DT 302

ORIGINAL PLAN	DATE
DESIGNED BY	
TRACED BY	
NOTE BOOK	
QUANTITIES BY	
CHECKED BY	