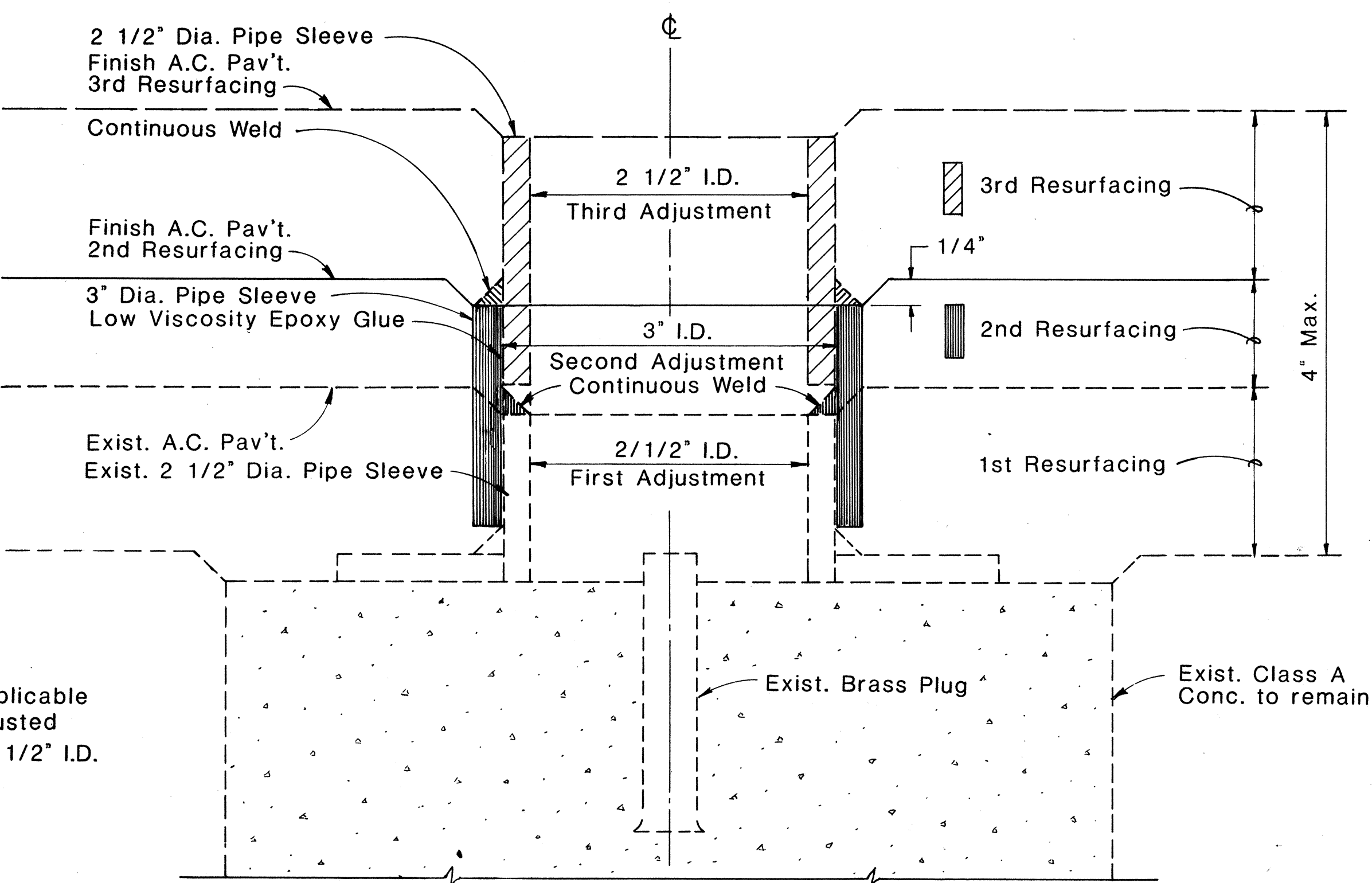


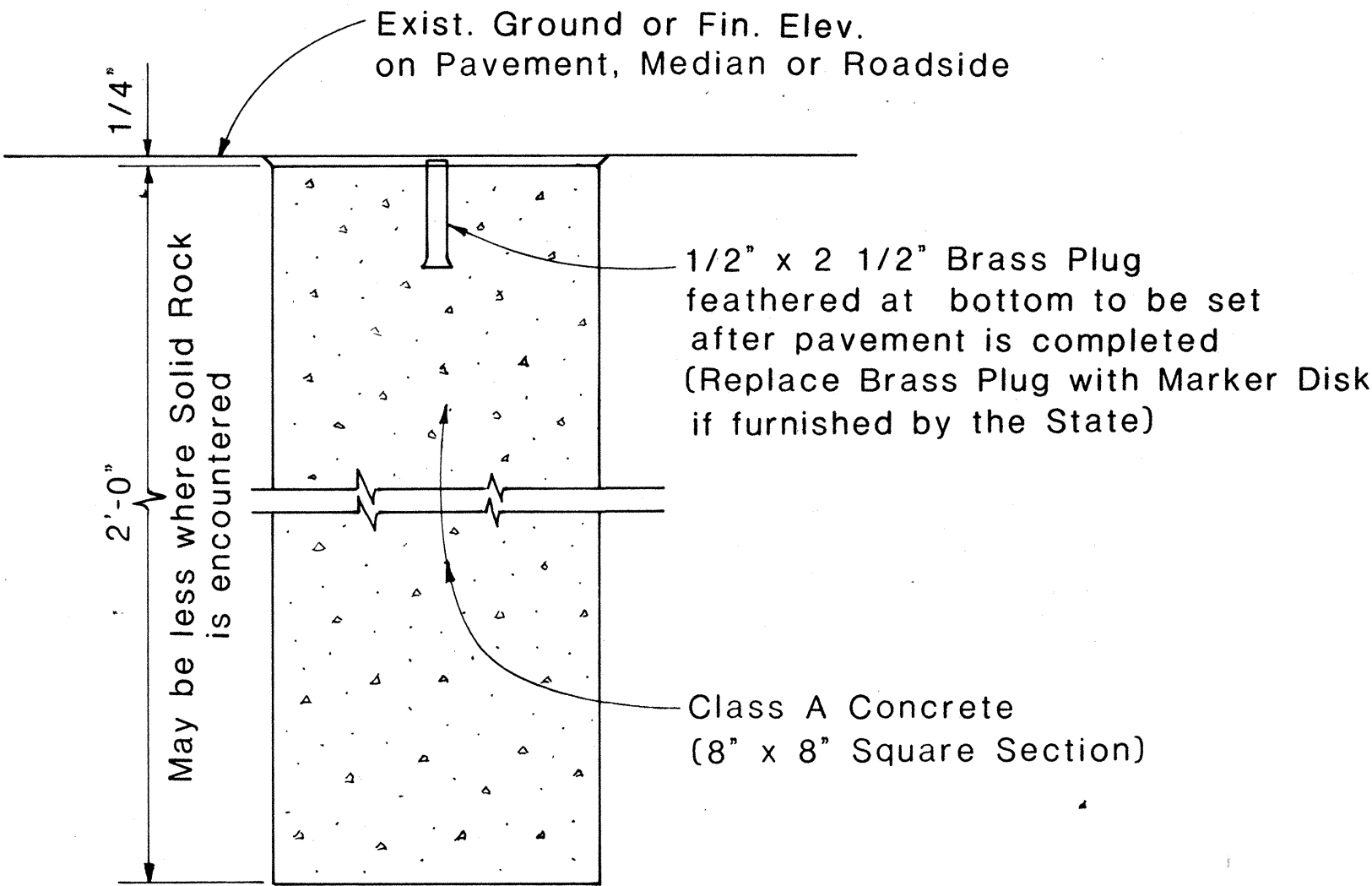
FED. ROAD DIST. NO.	STATE	FED. AID PROJ. NO.	FISCAL YEAR	SHEET NO.	TOTAL SHEETS
HAWAII	HAW.	19H-01-84M	1984	5	9



NOTE:  
This detail is applicable only if initial adjusted pipe sleeve is 2 1/2" I.D.

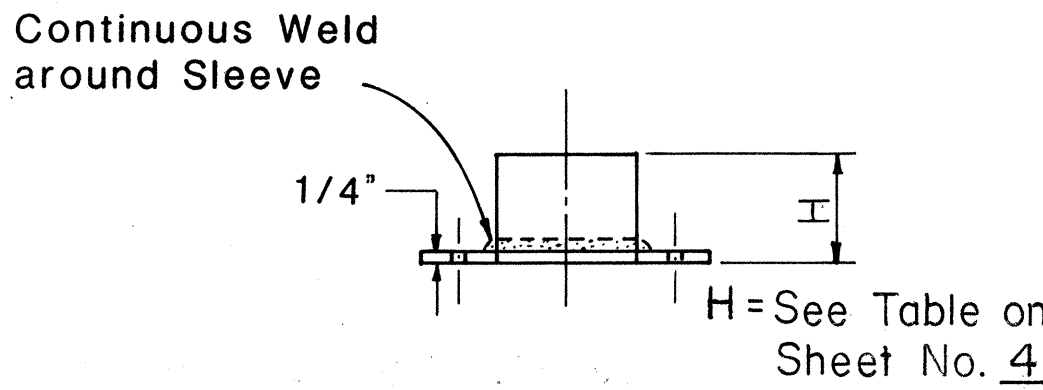
DETAIL FOR CENTERLINE MONUMENT  
(2ND & 3RD) ADJUSTMENTS

FULL SIZE

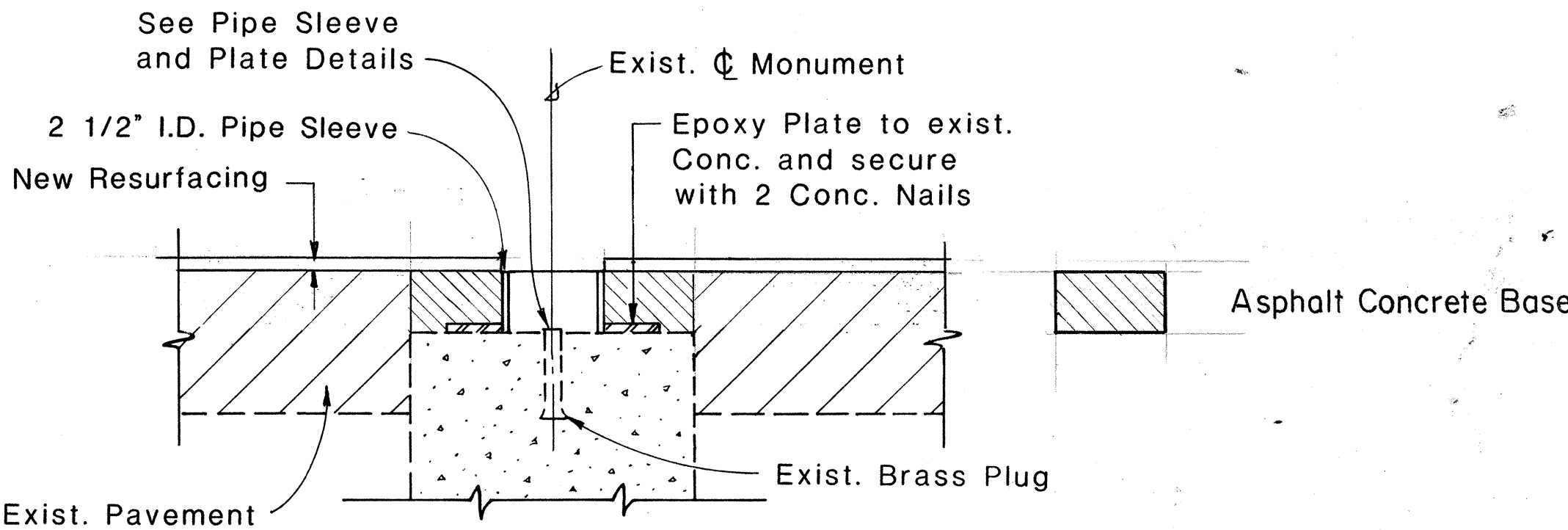


DETAIL FOR  
CENTERLINE & REFERENCE  
SURVEY MONUMENT

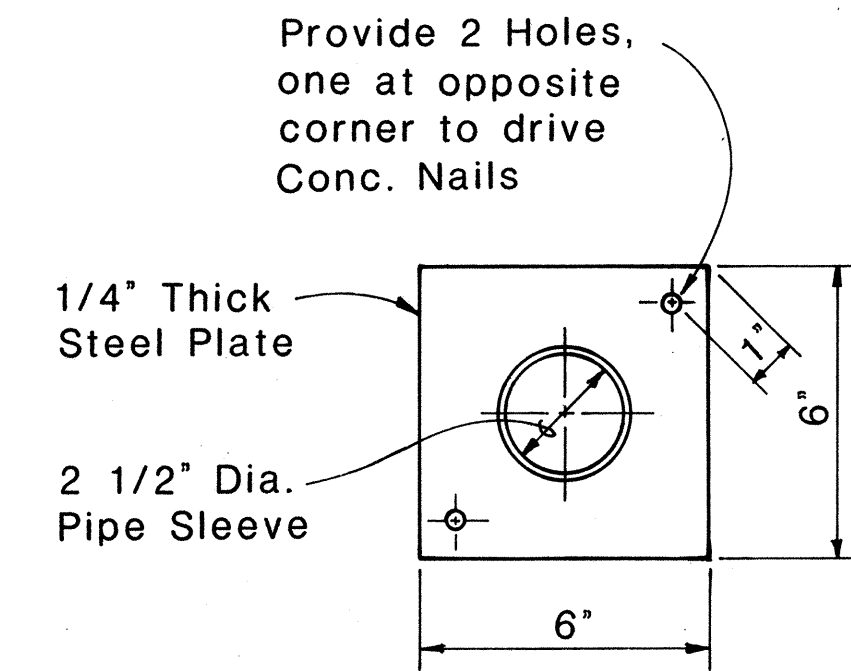
Scale: 1 1/2" = 1'-0"



PIPE SLEEVE & PLATE ELEVATION



SECTION THRU MONUMENT



PIPE SLEEVE & PLATE PLAN

I. These Adjustment Details also apply to Centerline Monuments utilized as Stationline Reference Points.

DETAILS FOR ADJUSTED CENTERLINE MONUMENT

Scale: 3" = 1'-0"

NO.	REVISION	APPROVED	
		BY	DATE

STATE OF HAWAII DEPARTMENT OF TRANSPORTATION HIGHWAYS DIVISION	
<b>TYPICAL DETAILS</b>	
<b>CENTERLINE AND REFERENCE SURVEY MONUMENT</b>	
Scale: As Shown	Date: May, 1983
SHEET NO.	OF SHEETS

FED. ROAD DIST. NO.	STATE	FED. AID PROJ. NO.	FISCAL YEAR	SHEET NO.	TOTAL SHEETS
HAWAII	HAW.	19H-01-84M	1984	6	9



CW20-1a 48" x 48"



CW20-2d 48" x 48"



CW20-3b 48" x 48"



CW20-4d 48" x 48"



CW20-5d(L) 48" x 48"



CW20-7c 48" x 48"



CW21-1 30" x 30"



CW21-2 30" x 30"



CW21-3 36" x 36"



CW21-4 36" x 36"



CW21-5 30" x 30"



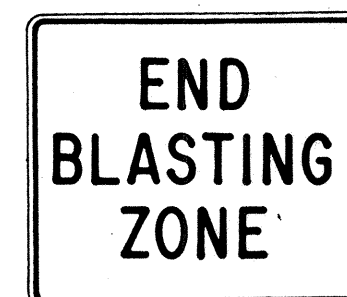
CW21-6 30" x 30"



CW22-1b 48" x 48"



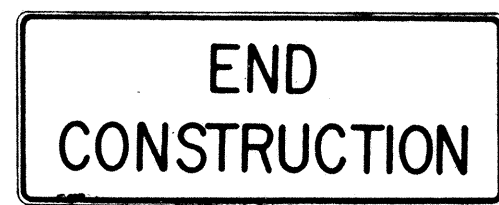
CW22-2 42" x 36"



CW22-3 42" x 36"



CG20-1(5) 60" x 36"



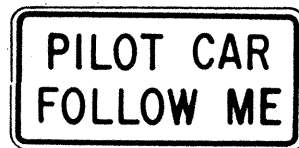
CG20-2 60" x 24"



CM4-9(R) 30" x 24"



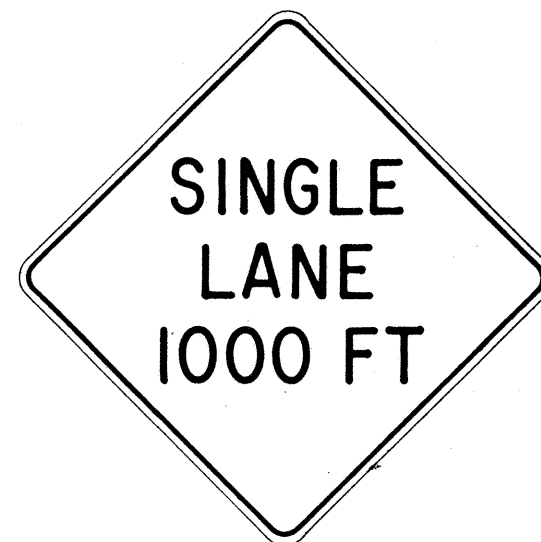
CM4-10(R) 48" x 18"



CG20-4 36" x 18"



CW23-1 36" x 36"



CW23-2b 48" x 48"



CW23-3(R) 48" x 48"

#### GENERAL NOTES

- Sign details shall conform to the FHWA publications "Manual on Uniform Traffic Control Devices for Streets and Highways," 1971, and "Standard Highway Signs," 1972, and as amended.
- All construction signs shall be reflectorized.
- All construction signs shall have 3/8" bolt holes drilled at appropriate locations.
- Numerals in ( ) indicates numerals to be inserted for sign message. (R) or (L) indicates right or left.
- For "CW" series signs, suffixes a,b,c and d are as follows:  
a-1500 FT, b-1000 FT,  
c-500 FT and d-AHEAD.

NO.	REVISION	APPROVED BY	DATE
1	Supersedes Sht. DT 104 Approved 12-30-69	H.T.	3/23/72
2	Revised General Note 1	H.T.	10/16/74
3	Revised General Note 2	H.T.	9-16-75
4	Revised General Note 2 and sign CG20-1(5)	H.T.	9-14-76

APPROVAL RECOMMENDED:  
*Erich Tanaka* 3/21/72  
TRAFFIC ENGINEER DATE

APPROVED:  
*Walter Saleh* 3/23/72  
ASSISTANT CHIEF, ENGINEERING DATE

STATE OF HAWAII  
DEPARTMENT OF TRANSPORTATION  
HIGHWAYS DIVISION

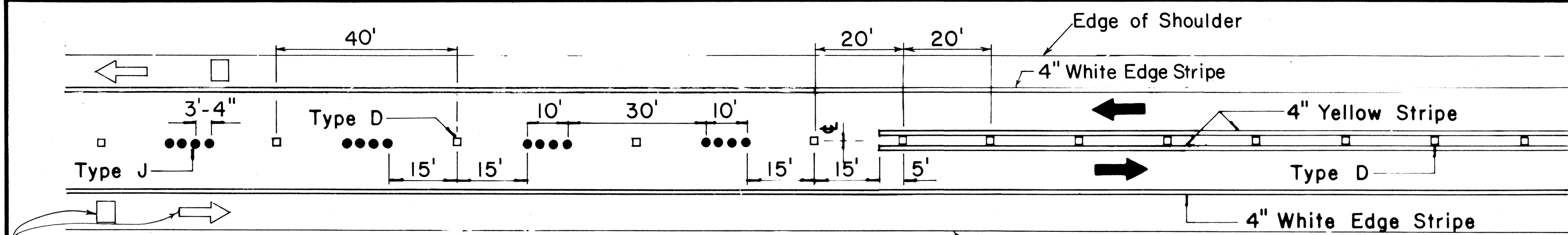
#### STANDARD DETAILS CONSTRUCTION SIGNS

NOT TO SCALE

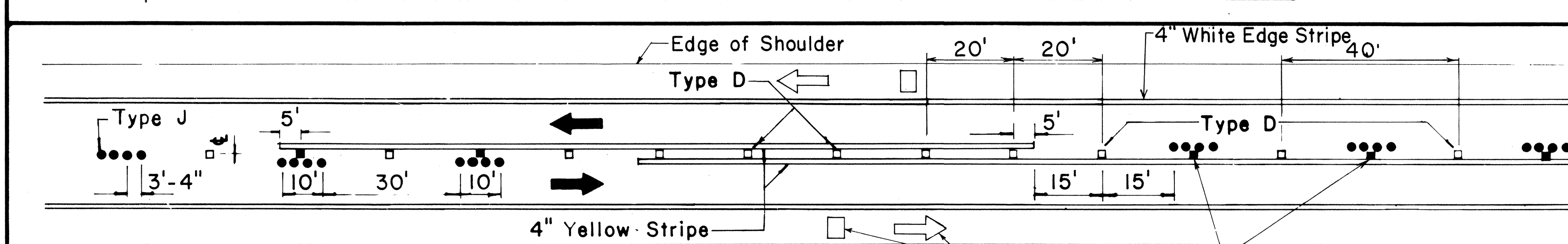
SHEET No. OF SHEETS DT 104



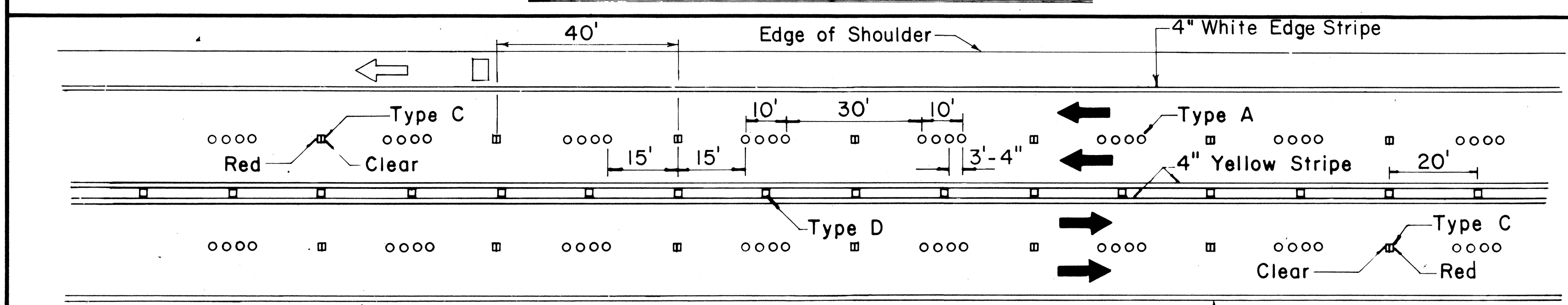
FED. ROAD DIST. NO.	STATE	FED. AID PROJ. NO.	FISCAL YEAR	SHEET NO.	TOTAL SHEETS
HAWAII	HAW.	19H-0181M	1984	7	9



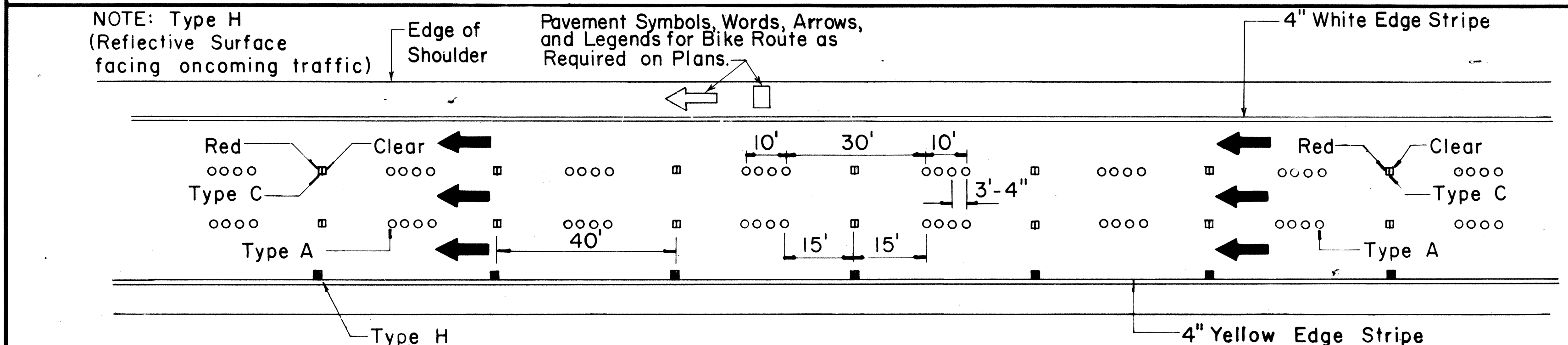
Pavement Symbols, Words, Arrows, and Legends for Bike Route as Required on Plans. **PASSING PERMITTED AND PASSING PROHIBITED**



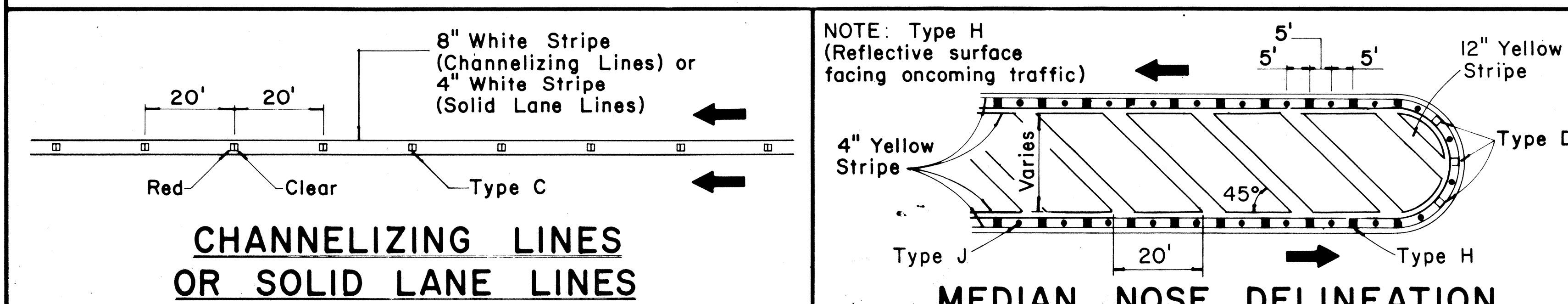
Pavement Symbols, Words, Arrows, and Legends for Bike Route as Required on Plans. **PASSING PROHIBITED ZONES**



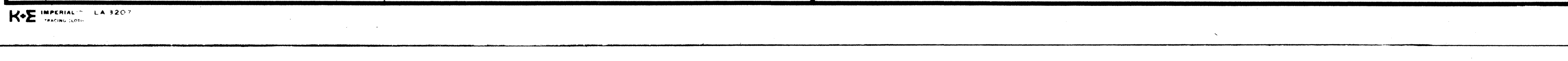
Pavement Symbols, Words, Arrows, and Legends for Bike Route as Required on Plans.



NOTE: Type H (Reflective Surface facing oncoming traffic) Pavement Symbols, Words, Arrows, and Legends for Bike Route as Required on Plans.



**CHANNELIZING LINES OR SOLID LANE LINES**



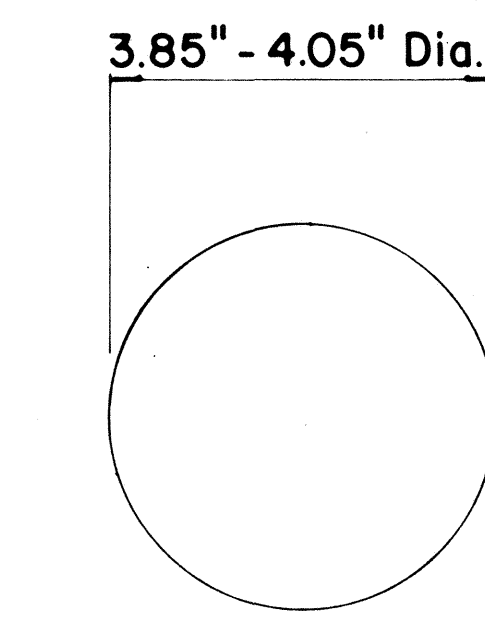
**MEDIAN NOSE DELINEATION**

**TWO - LANE**

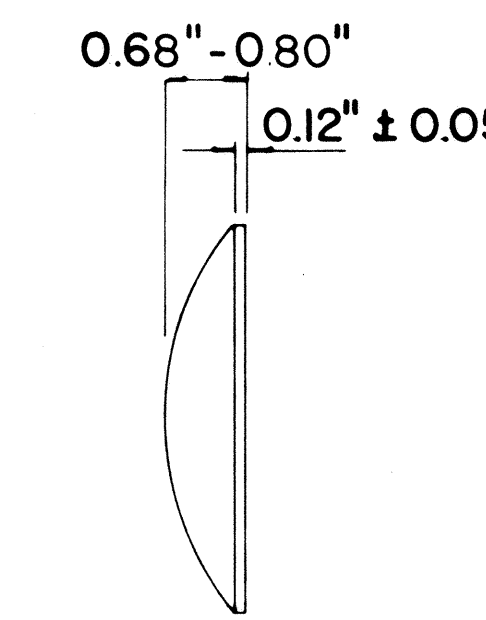
**MULTI - LANE**

**DIVIDED HIGHWAY AND FREEWAY**

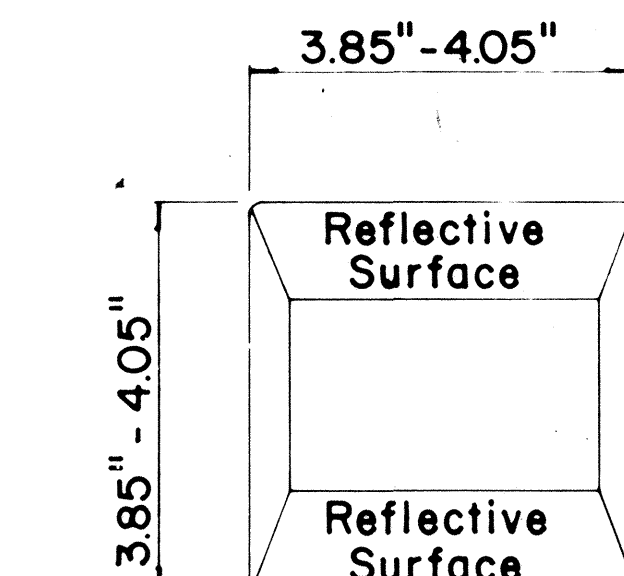
**MISCELLANEOUS**



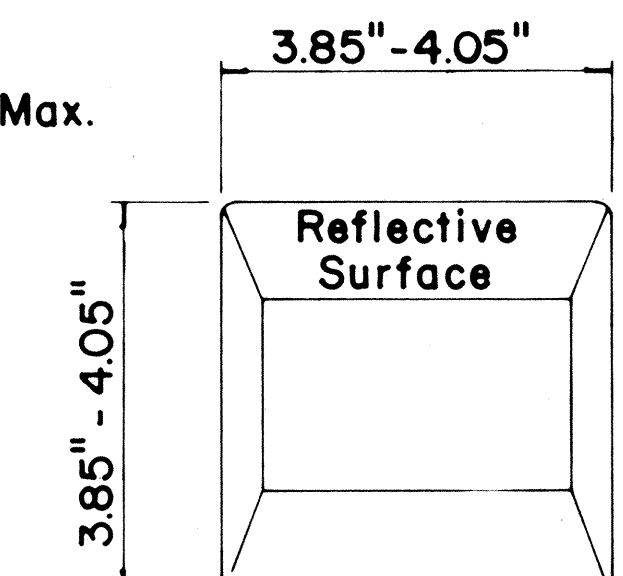
**TYPE A**  
NON-REFLECTIVE WHITE MARKER  
**TYPE J**  
NON-REFLECTIVE YELLOW MARKER



**TYPE C**  
RED-CLEAR REFLECTIVE MARKER



**TYPE D**  
TWO-WAY YELLOW REFLECTIVE MARKER



**TYPE H**  
ONE-WAY YELLOW REFLECTIVE MARKER

### GENERAL NOTES

- Pavement marking and striping shall conform to the latest "Manual on Uniform Traffic Control Devices for Streets and Highways," and as amended.
- Layout and installation of pavement marking and striping shall be done by the Contractor. The Contractor shall check the layouts with the Engineer prior to performing work.
- Edge lines shall not be continued through intersections and shall not be broken for driveways unless otherwise shown or directed.

### LEGEND

- Type A
- Type C
- Type D
- Type H
- Type J

APPROVAL RECOMMENDED:  
*Erich Tanaka*  
TRAFFIC ENGINEER 7/21/78  
DATE

APPROVED:  
*Harold D. Delia*  
ASSISTANT CHIEF, ENGINEERING 1/24/78  
DATE

No.	REVISION	APPROVED BY	DATE
1	Supersedes DT 300 approved 11/18/71.	H.T.	1/24/78
2	Delete Type A Markers from Bike Route Delineation.	H.T.	10/15/79
3	Added General Note 3. Revised left edge stripe.	H.T.	9-28-83

STATE OF HAWAII  
DEPARTMENT OF TRANSPORTATION  
HIGHWAYS DIVISION  
**STANDARD DETAILS**  
**RAISED PAVEMENT MARKERS**  
**AND STRIPING**  
Not to Scale July 1978  
SHEET No. OF SHEETS DT 300

FED. ROAD DIST. NO.	STATE	FED. AID PROJ. NO.	FISCAL YEAR	SHEET NO.	TOTAL SHEETS
HAWAII	HAW.	19H-01-84M	1984	8	9

**GENERAL NOTES:**

1. Pavement marking and striping shall conform to the latest edition of the "Manual on Uniform Traffic Control Devices for Streets and Highways," by the FHWA, and as amended.
2. Layout of pavement markings and striping shall be done by the Contractor. The Contractor shall check layout of markings and striping with the Engineer prior to performing work.
3. For additional pavement marking details, see sheet DT 300.

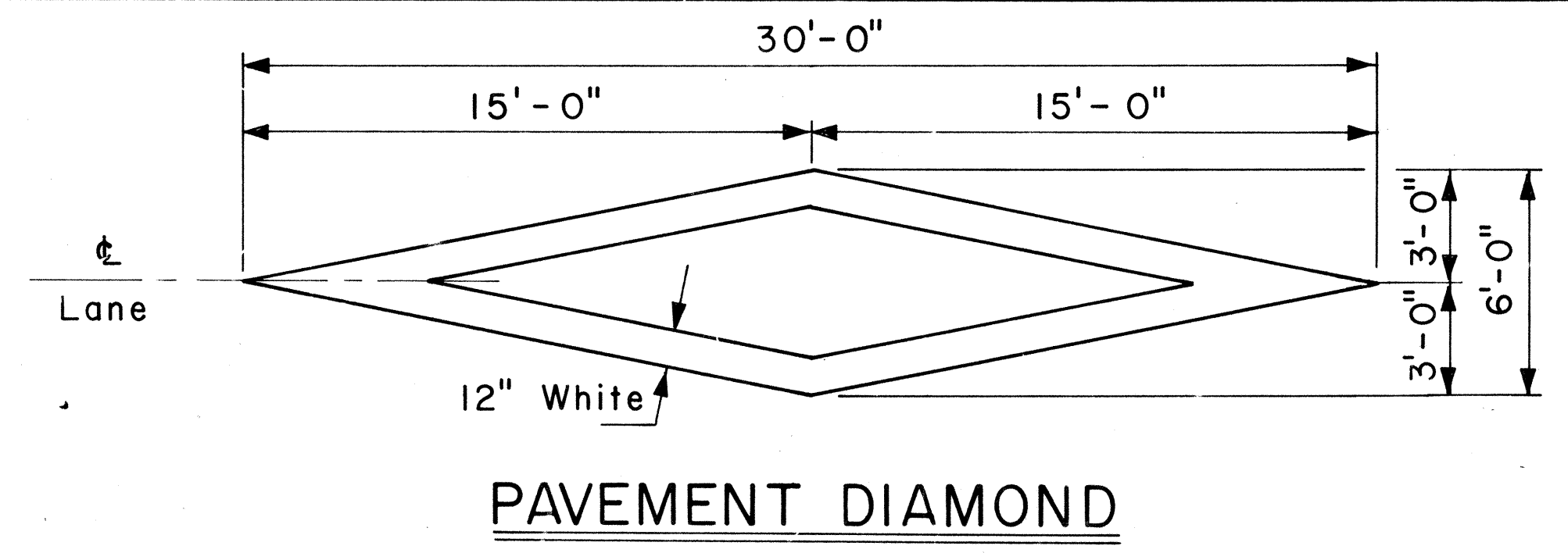
APPROVAL RECOMMENDED: Eishi Tanaka 5/2/78  
TRAFFIC ENGINEER DATE

APPROVED: Herbert Z. Zakeishw 5/3/78  
ASSISTANT CHIEF, ENGINEERING DATE

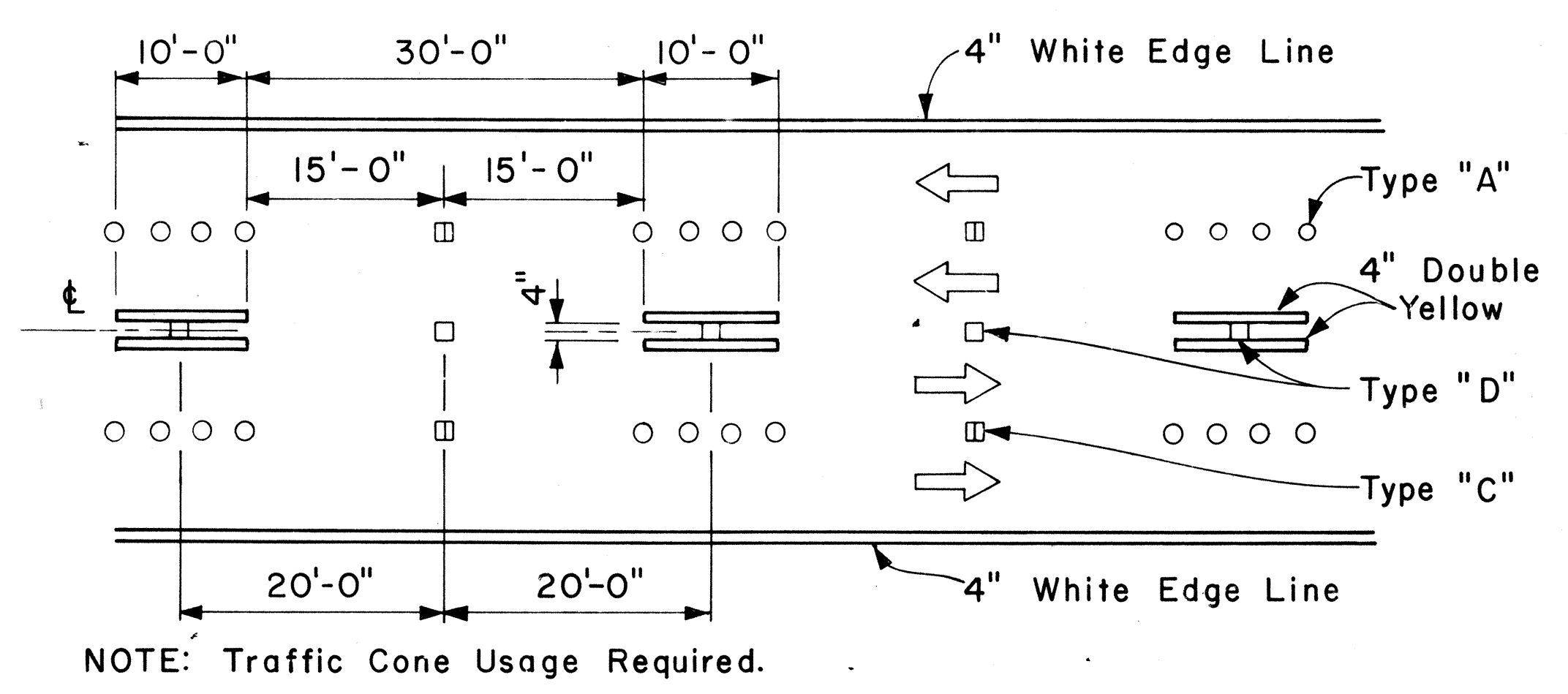
NO.	REVISION	APPROVED BY	DATE

STATE OF HAWAII  
DEPARTMENT OF TRANSPORTATION  
LAND TRANSPORTATION FACILITIES DIVISION  
**STANDARD DETAILS**  
MISCELLANEOUS  
PAVEMENT MARKINGS

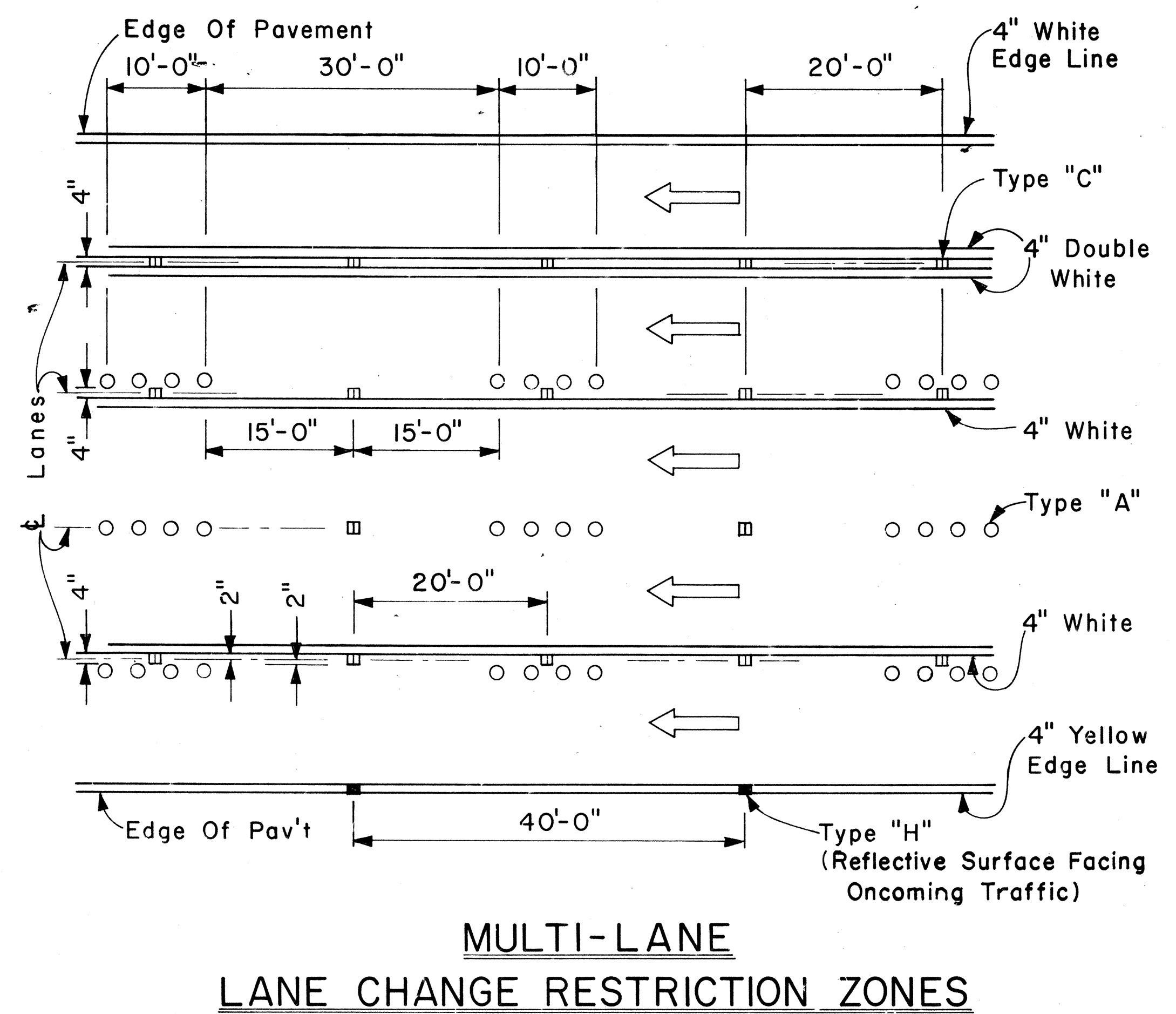
Scale: Not to Scale    Date: April, 1978  
SHEET NO.    OF    SHEETS DT 302



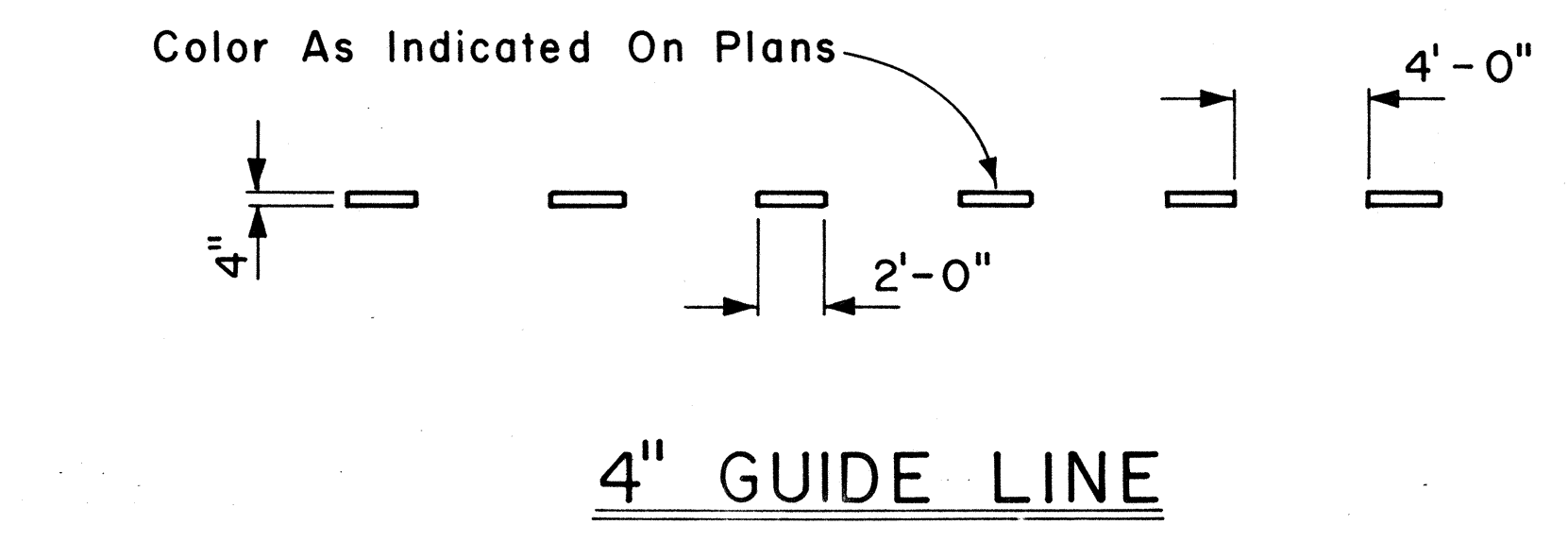
**PAVEMENT DIAMOND**



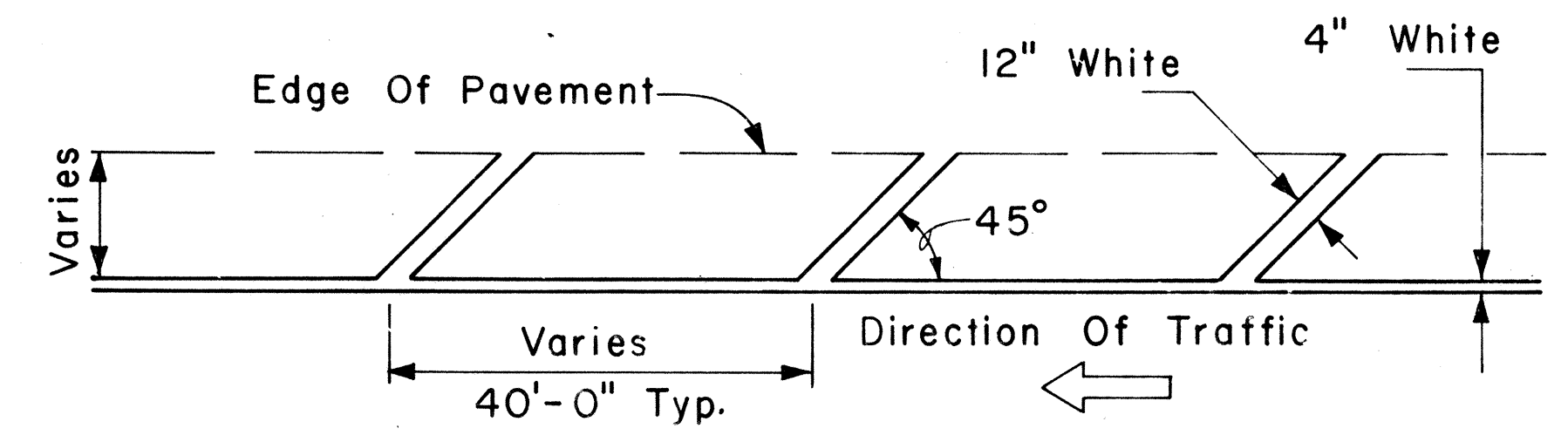
**MULTI-LANE REVERSIBLE LANES**



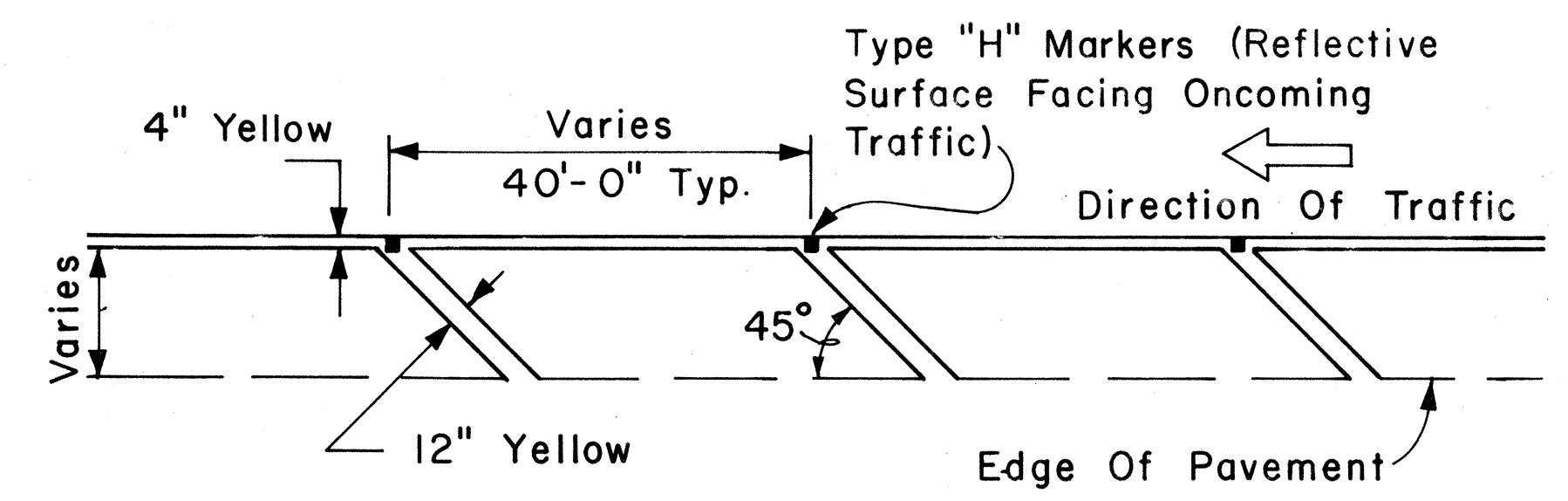
**MULTI-LANE LANE CHANGE RESTRICTION ZONES**



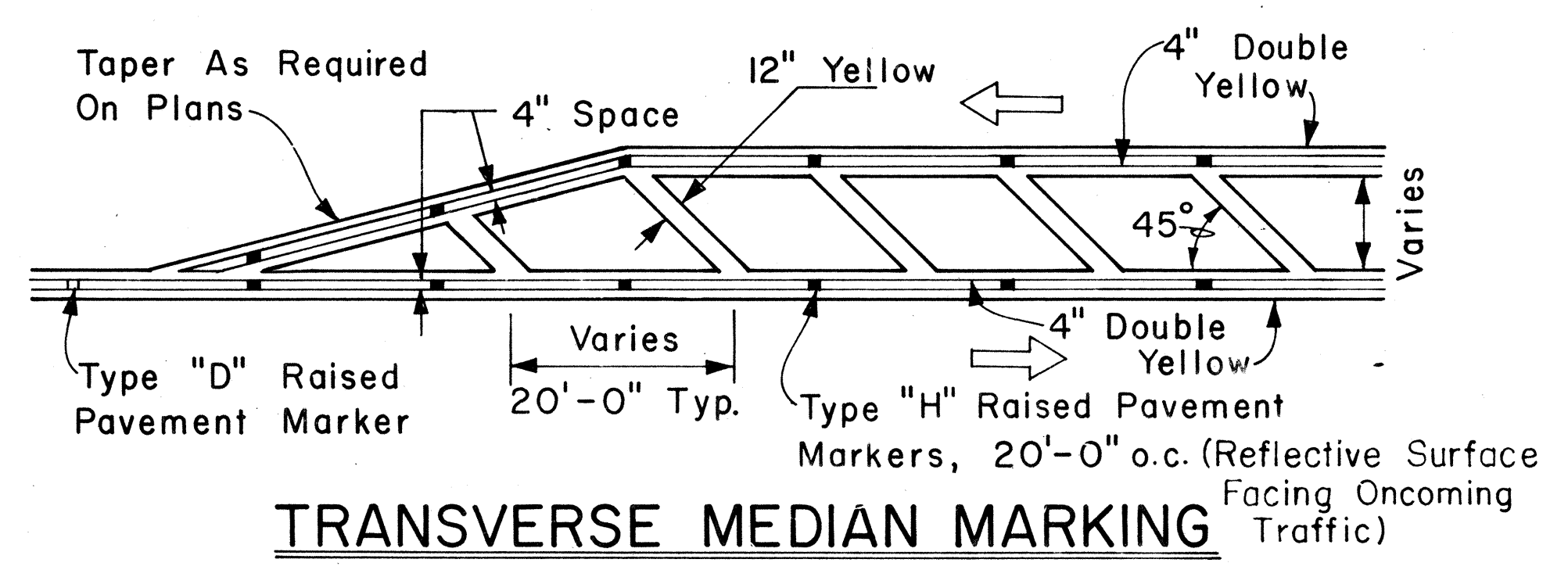
**4" GUIDE LINE**



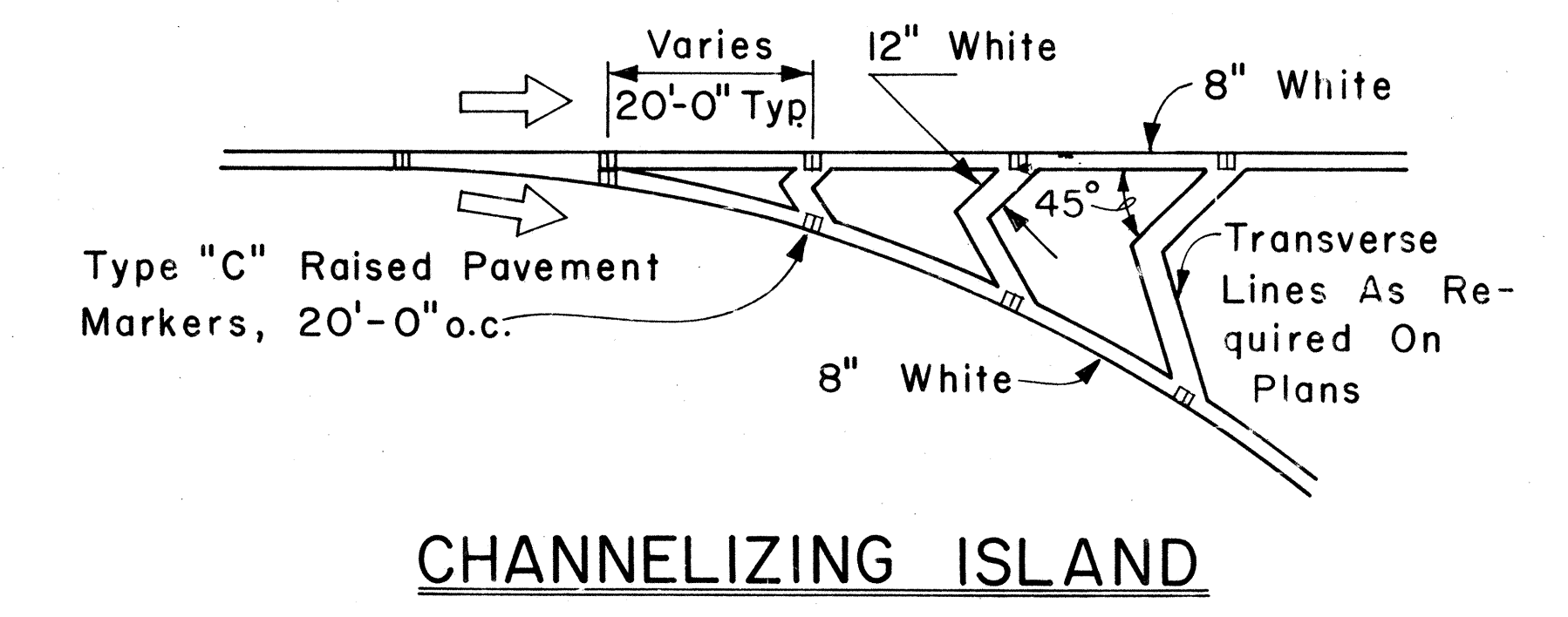
**TRANSVERSE RIGHT SHOULDER MARKING**



**TRANSVERSE LEFT SHOULDER MARKING**



**TRANSVERSE MEDIAN MARKING**

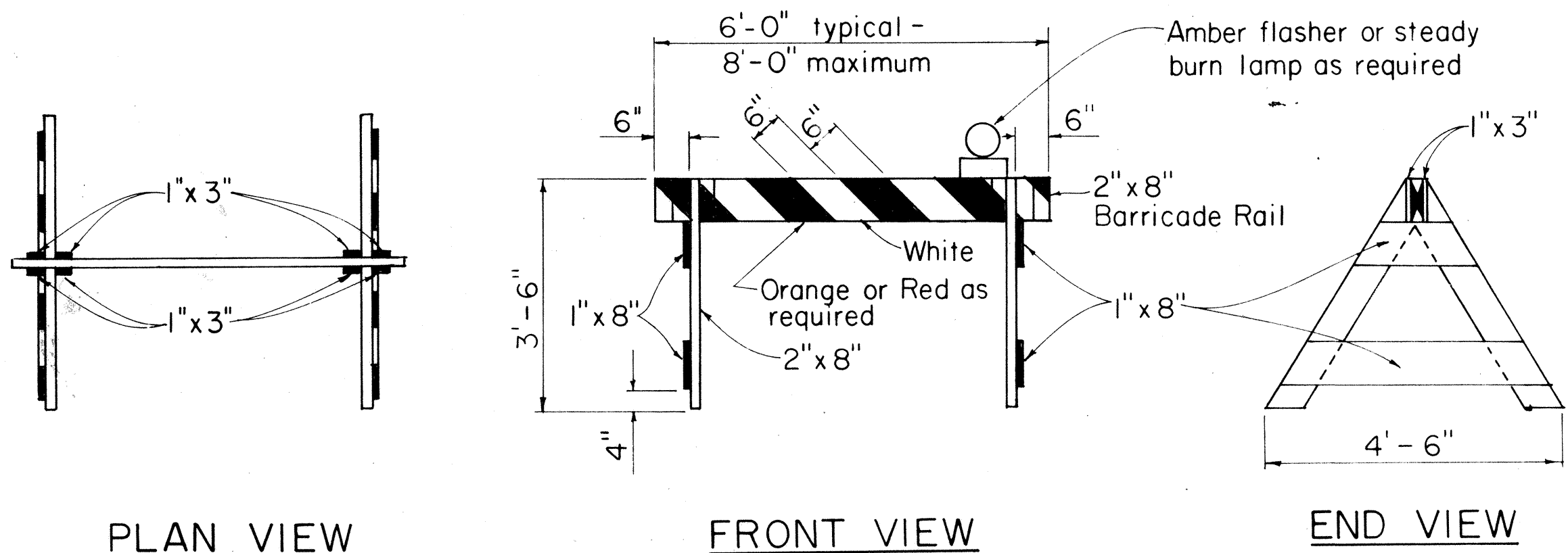


**CHANNELIZING ISLAND**

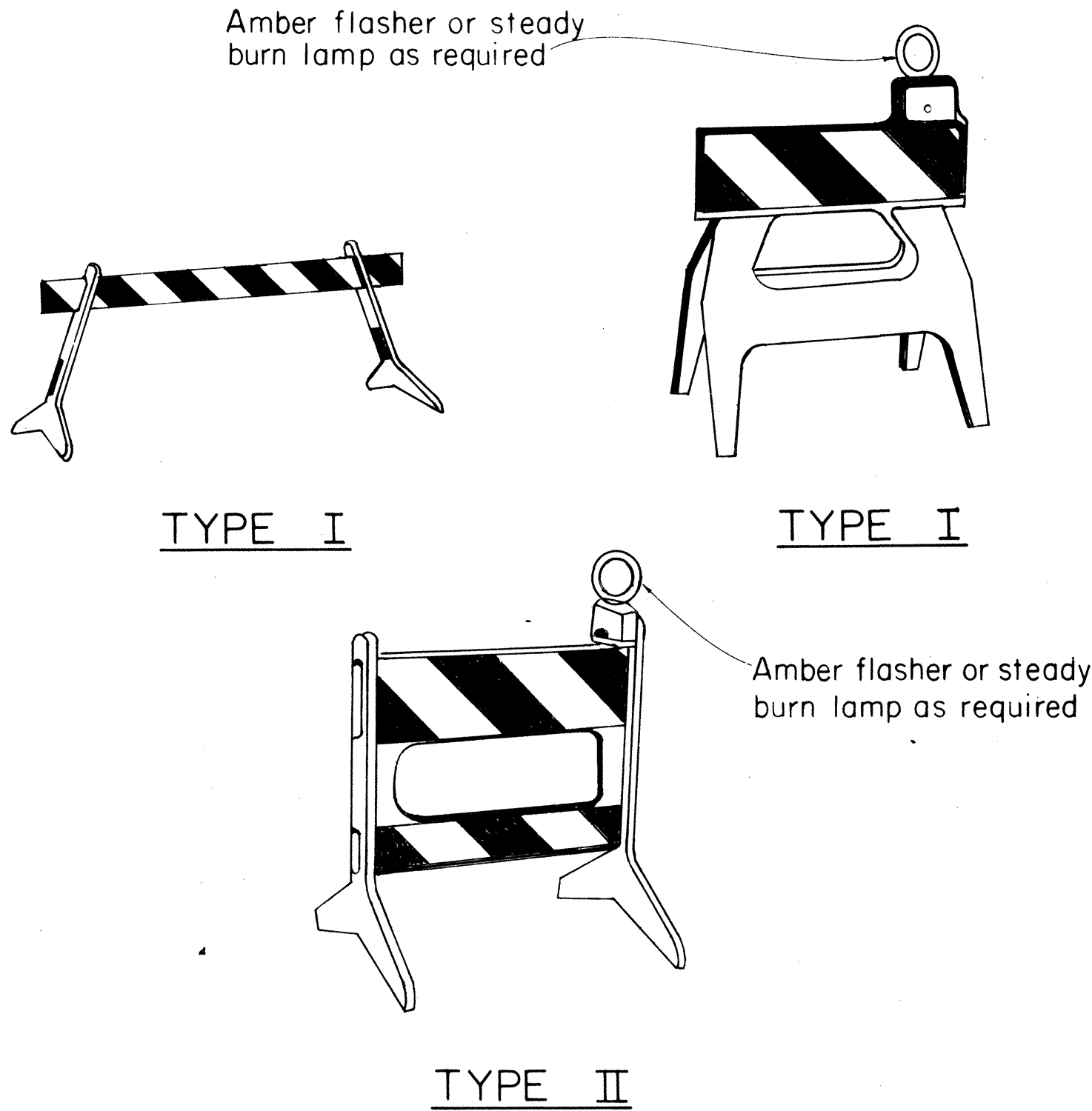
SURVEY PLOTTED BY	DATE
DRAWN BY	
CHECKED BY	
NOTED BY	
QUANTITIES BY	
CHECKED BY	
ORIGINAL PLAN	
NO.	



FED. ROAD DIST. NO.	STATE	FED. AID PROJ. NO.	FISCAL YEAR	SHEET NO.	TOTAL SHEETS
HAWAII	HAW.	1980-1984	1984	9	9

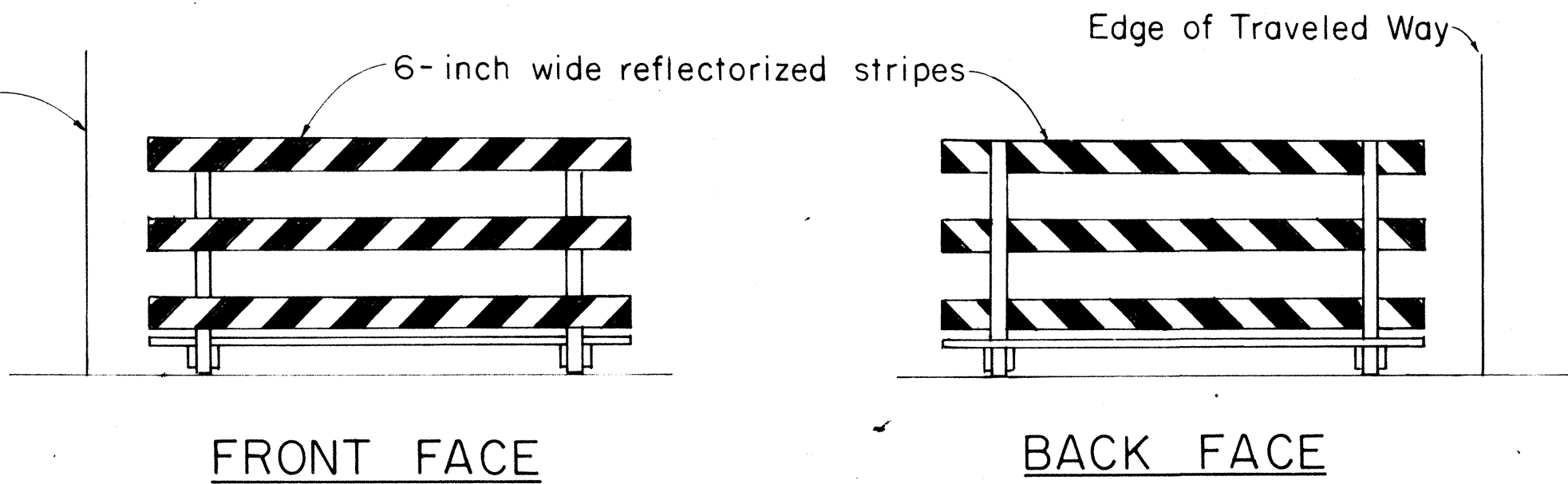


TYPE I BARRICADE  
Scale: 1/2" = 1'-0"



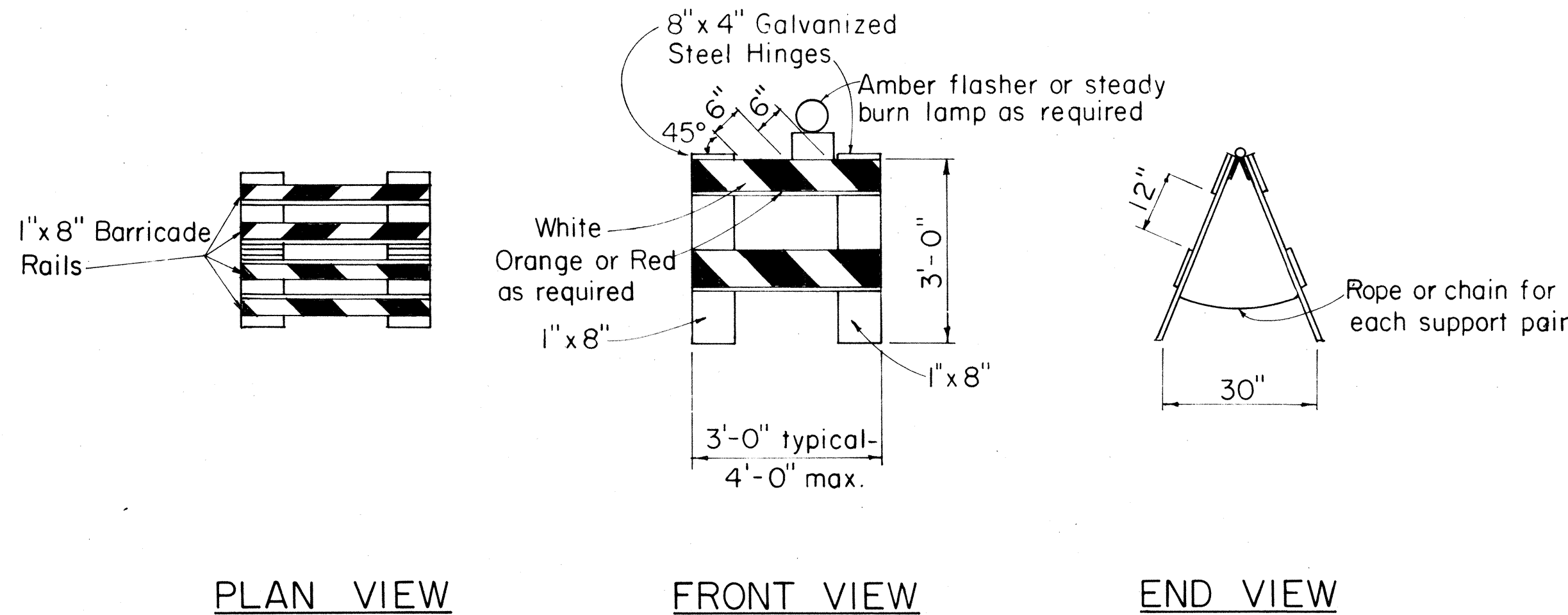
PLASTIC MOLDED BARRICADE OPTIONS\*  
Not to Scale

\* Shop Drawings must be submitted for approval.

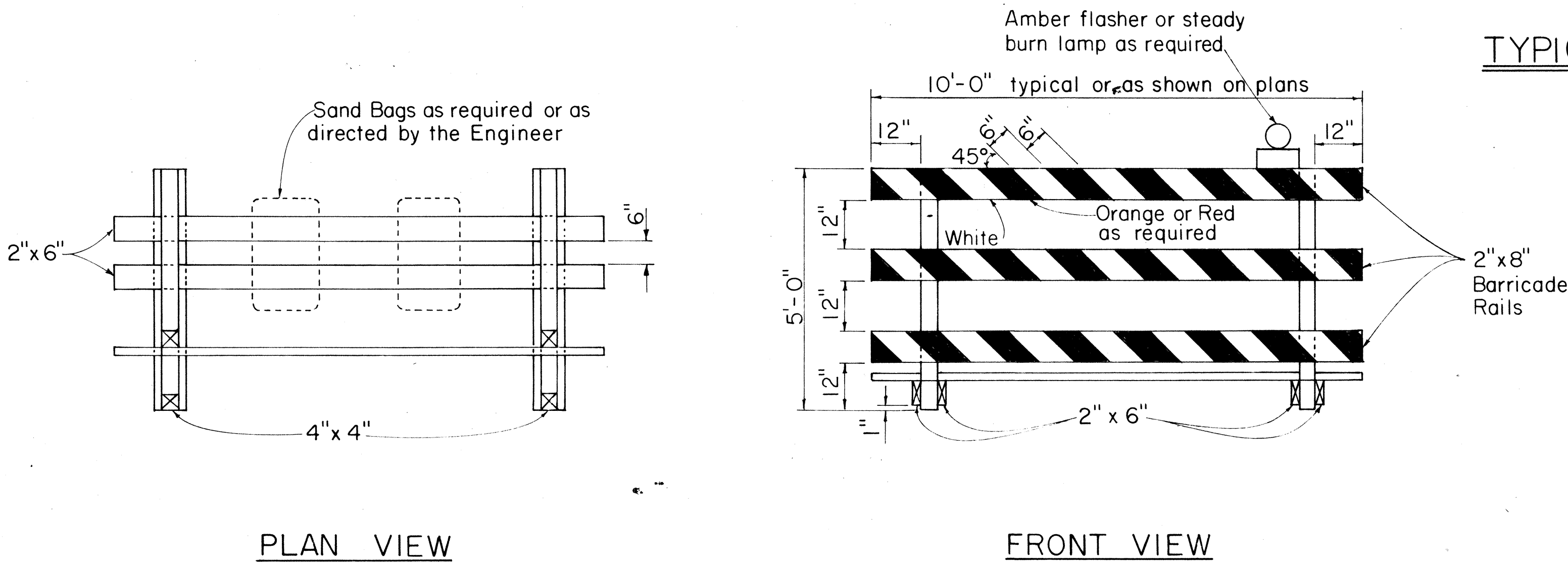


TYPICAL BARRICADE STRIPING DETAILS\*\*  
Not to Scale

\*\* Similar for Types I & II



TYPE II BARRICADE  
Scale: 1/2" = 1'-0"



TYPE III BARRICADE  
Scale: 1/2" = 1'-0"

### GENERAL NOTES

- The front and back faces of each barricade rail shall be reflectorized with stripes sloping downward toward the same side (traveled way) of each barricade.
- Contractor may submit alternate barricade designs for approval.
- Sandbags or other approved weights shall not be placed on top of any striped rail.
- The Contractor is directed to Section 626.

APPROVAL RECOMMENDED:  
*Eichi Tanaka*  
TRAFFIC ENGINEER  
DATE: 10/21/81

APPROVED:  
*[Signature]*  
ASSISTANT CHIEF, ENGINEERING  
DATE: 10/21/81

NO.	REVISION	APPROVED BY	DATE
1	Supercedes DT 800 Approved 12/30/69		

STATE OF HAWAII  
DEPARTMENT OF TRANSPORTATION  
HIGHWAYS DIVISION

STANDARD DETAILS

**BARRICADES**

SCALE: As Shown

SHEET NO. OF SHEETS DT 800