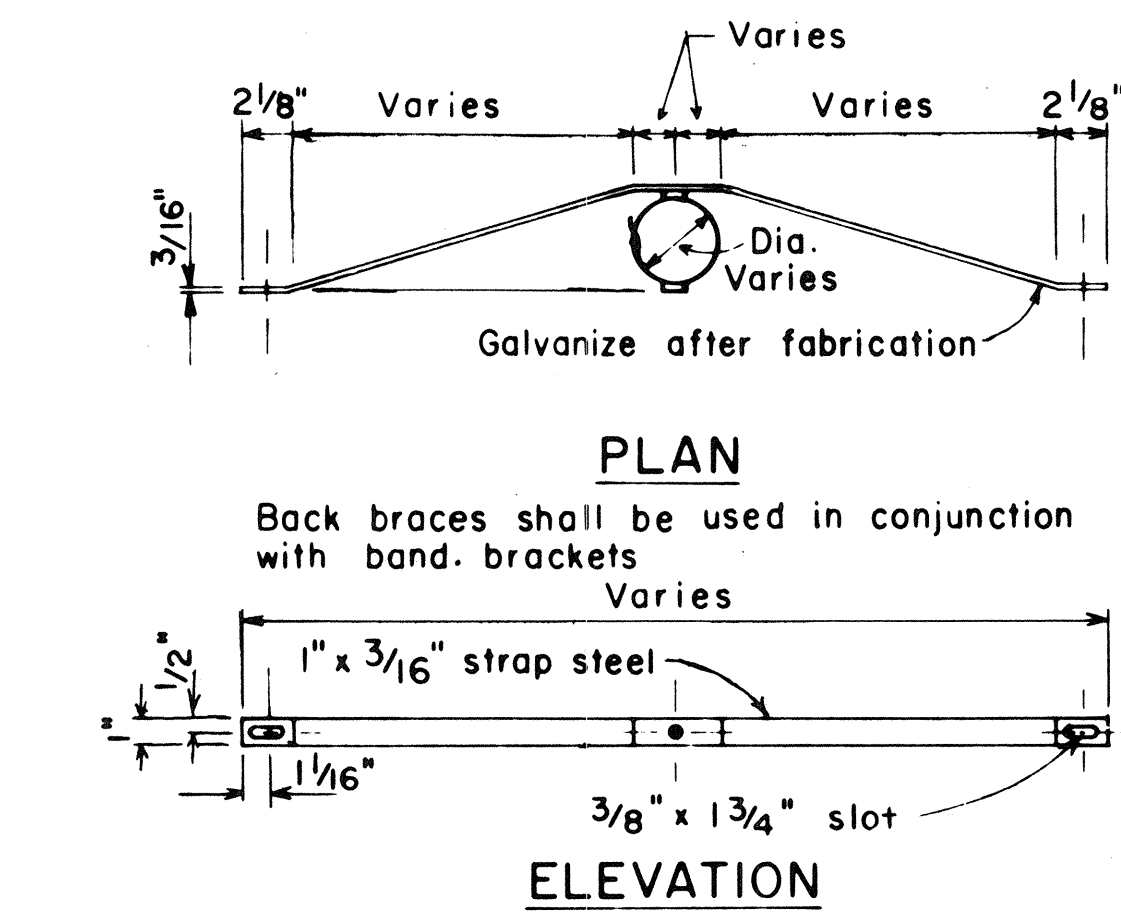


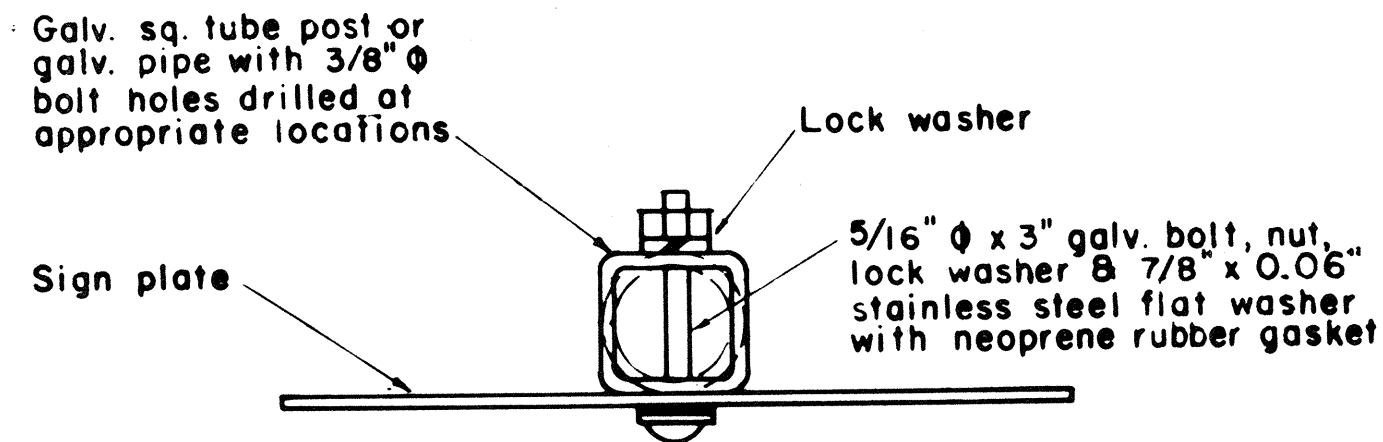
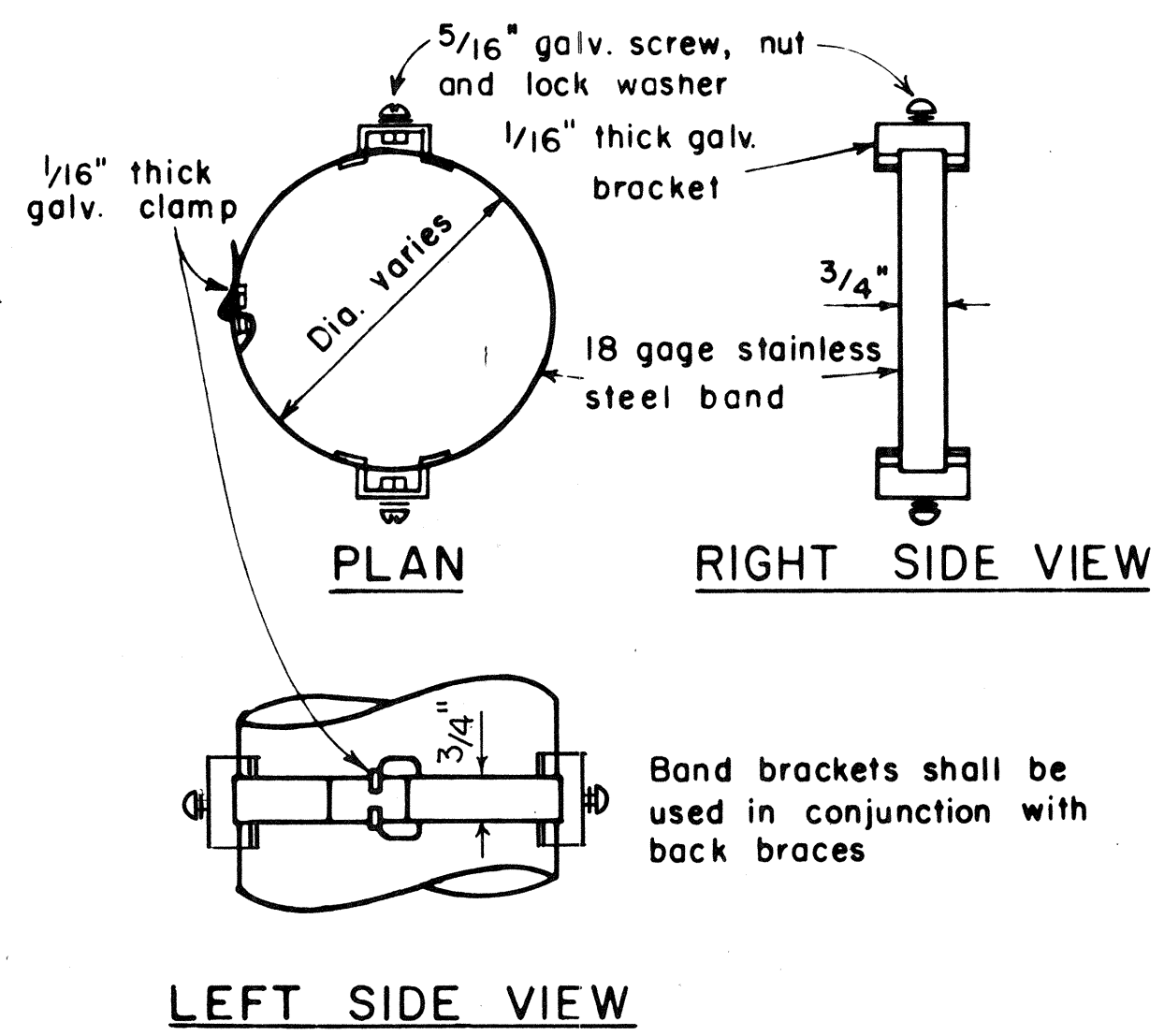
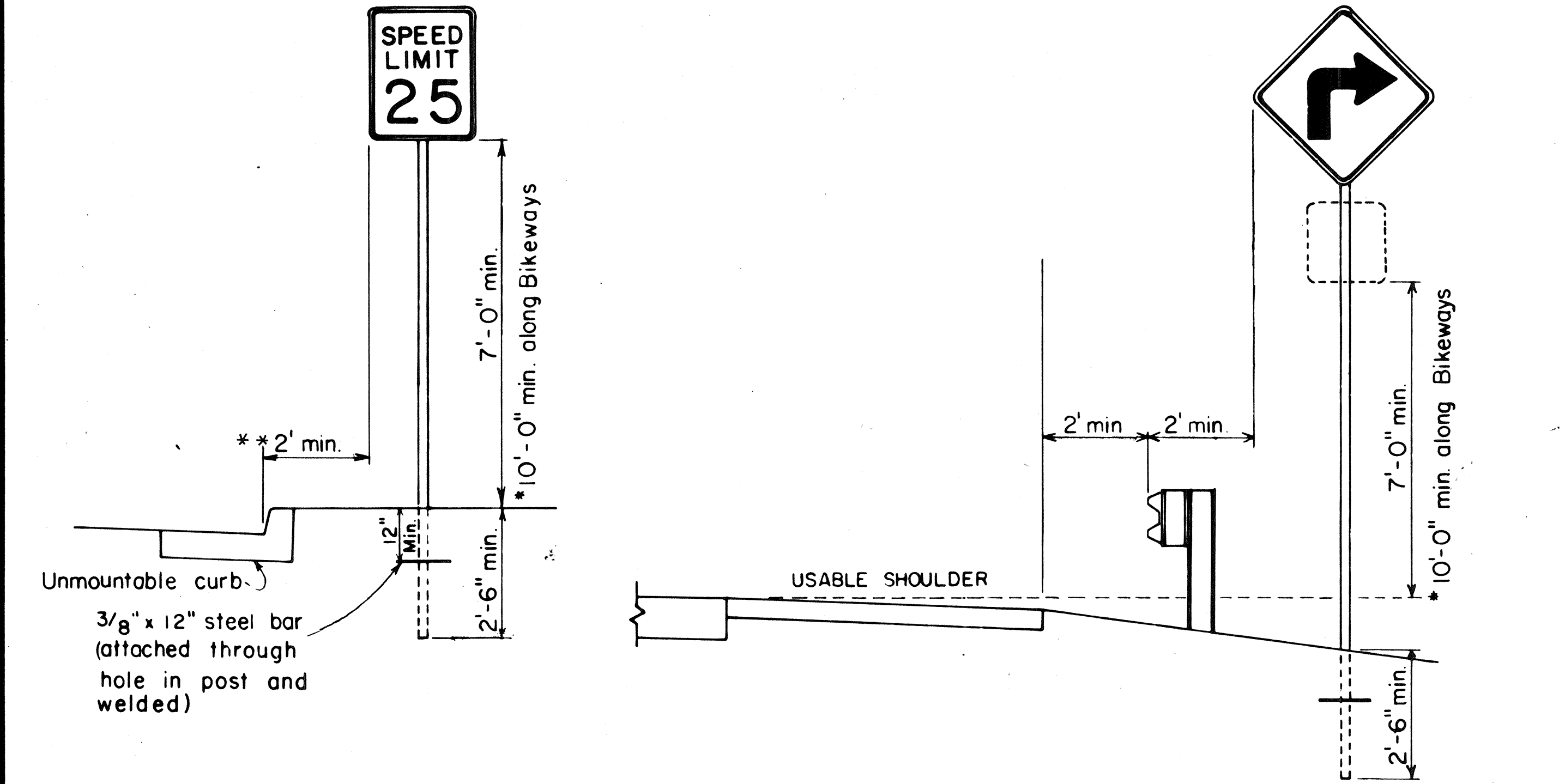
FED. ROAD DIST. NO.	STATE	FED. AID PROJ. NO.	FISCAL YEAR	SHEET NO.	TOTAL SHEETS
HAWAII	HAW.	19J-01-82	1982	4	5

GENERAL NOTES

- Signs shall be placed in conformance with positions shown and described in the "Manual on Uniform Traffic Control Devices for Streets and Highways", 1978, Part II, Section 2A-21, as amended, and as supplemented herein.
- Signs 48" and wider or larger than 10 sq. ft. in area shall be mounted on two sign posts except as noted below.
- Signs 48" and wider or larger than 10 sq. ft. in area may be mounted on other than two sign posts (i.e. on highway lighting poles)
 - Signs larger than 10 sq. ft. and less than 28 sq. ft. in area shall be mounted with a minimum of two sets of band brackets and back braces.
 - Signs larger than 28 sq. ft. in area shall be mounted with a minimum of three sets of band brackets and back braces.
- All parking restriction signs with arrows shall be mounted 45° to the line of traffic flow.
- Sign posts shall extend 3½" above each sign, where required, for attachment of City and County street name signs.
- (R) or (L) indicates right or left and shall be shown on the plans.
- See plans for special details.
- The minimum lateral distances shown are guidelines and shall be exceeded whenever possible. The Contractor shall place signs at the maximum practical lateral distance from the edge of the traveled way up to 30 feet and shall utilize protected locations whenever possible. Final locations of all signs shall be approved by the Engineer.
- Signs in medians shall be placed at midpoint of median up to a maximum distance of 30 feet from the edge of traveled way. When appropriate, signs for opposing directions shall be placed back to back.



BACK BRACE DETAILS
FOR BALANCED SIGN INSTALLATION



GALVANIZED SQUARE TUBE POST
(OR GALVANIZED PIPE)

BAND BRACKET
TYPICAL MOUNTING DETAILS

NOT TO SCALE

NO.	REVISION	APPROVED BY	DATE
1	Supersedes Sht. DT-100 approved 12/30/69	H.T.	11/15/77
2	Revised depth of signpost	H.T.	5/8/79
3	Added Notes No. 8 & No. 9	H.T.	5/18/79
4	Revised Gen. Note #4 & Mounting Details	H.T.	4/23/80
5	Revised General Notes, Lateral Sign Locations and Mounting Details	H.T.	5/15/81

APPROVAL RECOMMENDED:
Enishi Tanaka
 TRAFFIC ENGINEER 11/10/77
 DATE

APPROVED:
Herbert S. Nakai
 ASSISTANT CHIEF, ENGINEERING 11/15/77
 DATE

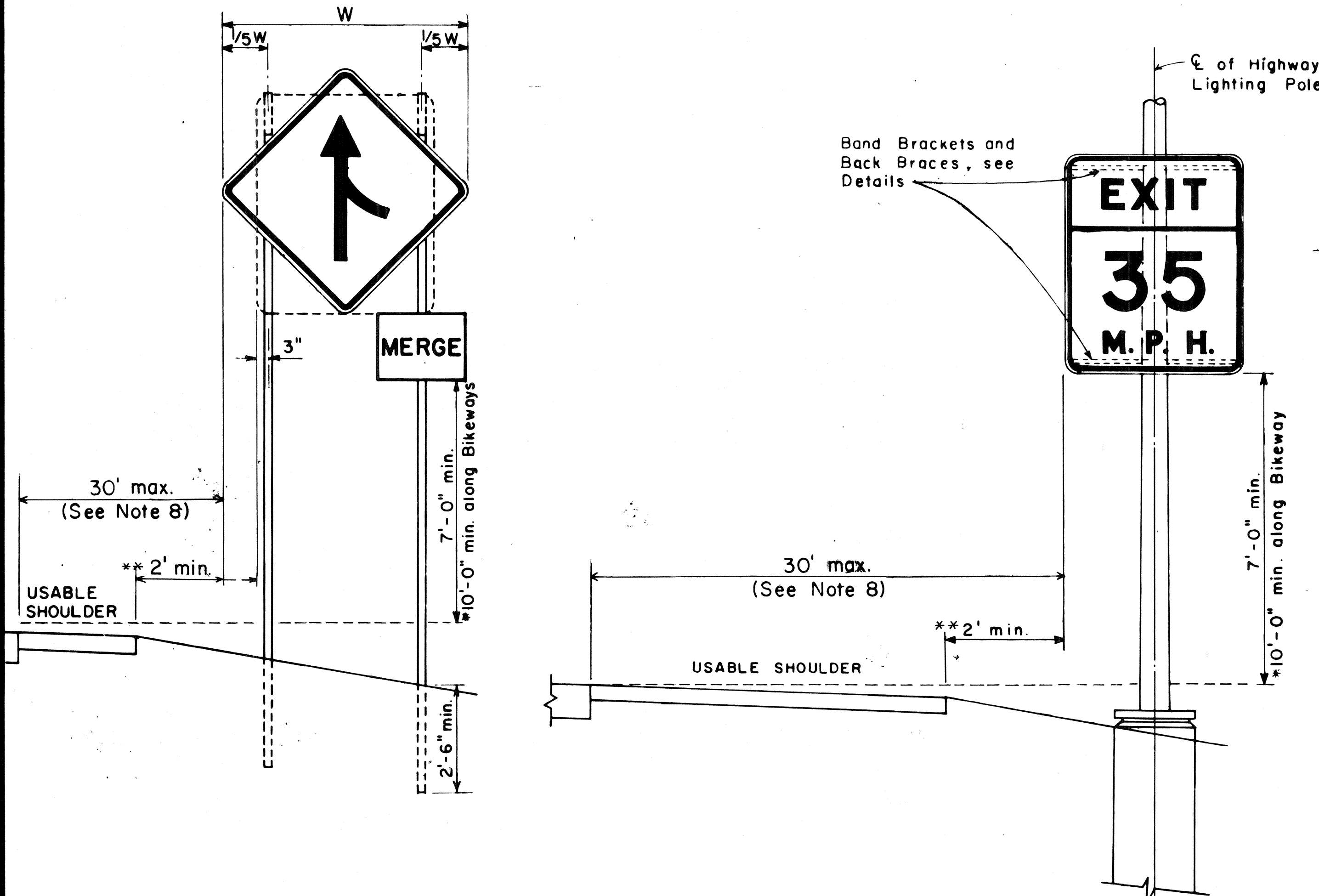
STATE OF HAWAII
DEPARTMENT OF TRANSPORTATION
HIGHWAYS DIVISION

STANDARD DETAILS
MISCELLANEOUS SIGN DETAILS

Not to scale
June, 1977

HEIGHT AND LATERAL LOCATION OF SIGNS
TYPICAL INSTALLATION

ORIGINAL PLAN	DATE
DRAWN BY	
DESIGNED BY	
NOTE BOOK	
QUANTITIES BY	
CHECKED BY	
NO.	



FED. ROAD DIST. NO.	STATE	FED. AID PROJ. NO.	FISCAL YEAR	SHEET NO.	TOTAL SHEETS
HAWAII	HAW.	19J-01-82	1982	5	5



CW20-1a 48" x 48"



CW20-2d 48" x 48"



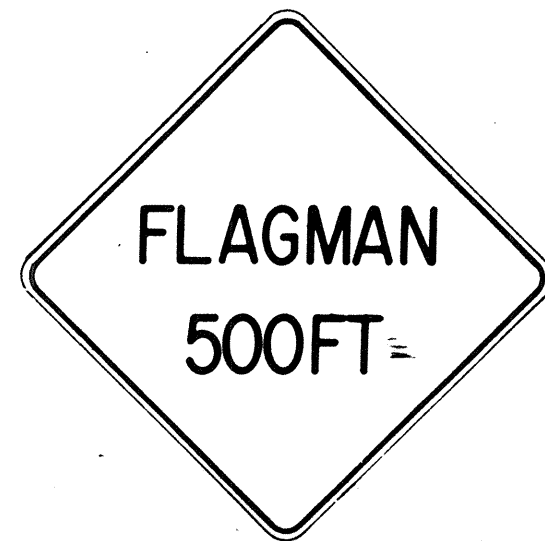
CW20-3b 48" x 48"



CW20-4d 48" x 48"



CW20-5d(L) 48" x 48"



CW20-7c 48" x 48"



CW21-1 30" x 30"



CW21-2 30" x 30"



CW21-3 36" x 36"



CW21-4 36" x 36"



CW21-5 30" x 30"



CW21-6 30" x 30"



CW22-1b 48" x 48"



CW22-2 42" x 36"



CW22-3 42" x 36"



CG20-1(5) 60" x 36"



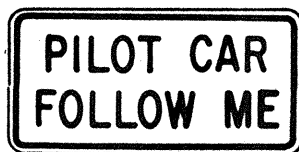
CG20-2 60" x 24"



CM4-9(R) 30" x 24"



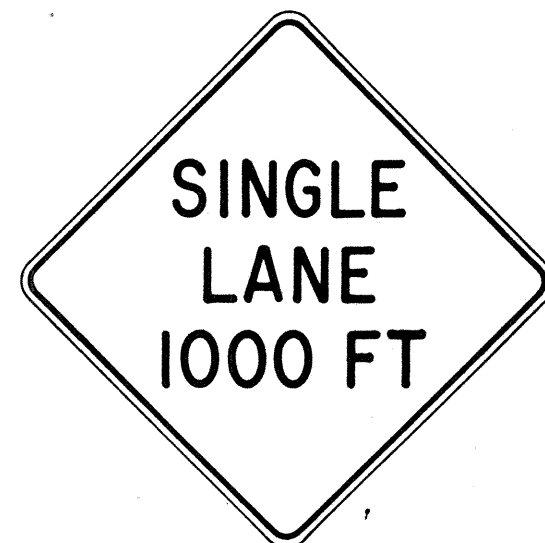
CM4-10(R) 48" x 18"



CG20-4 36" x 18"



CW23-1 36" x 36"



CW23-2b 48" x 48"



CW23-3(R) 48" x 48"

GENERAL NOTES

- Sign details shall conform to the FHWA publications "Manual on Uniform Traffic Control Devices for Streets and Highways," 1971, and "Standard Highway Signs," 1972, and as amended.
- All construction signs shall be reflectorized.
- All construction signs shall have 3/8" bolt holes drilled at appropriate locations.
- Numerals in () indicates numerals to be inserted for sign message. (R) or (L) indicates right or left.
- For "CW" series signs, suffixes a,b,c and d are as follows:
a-1500 FT, b-1000 FT, c-500 FT and d-AHEAD.

APPROVAL RECOMMENDED:
Erich Tanaka
TRAFFIC ENGINEER

3/21/72
DATE

APPROVED:
Arthur Salsich
ASSISTANT CHIEF, ENGINEERING

3/23/72
DATE

NO.	REVISION	APPROVED BY	DATE
1	Supersedes Sht. DT 104 Approved 12-30-69	HT	3/23/72
2	Revised General Note 1	HT	10/16/74
3	Revised General Note 2	HT	9-16-75
4	Revised General Note 2 and sign CG20-1(5)	HT	9-14-76

STATE OF HAWAII
DEPARTMENT OF TRANSPORTATION
HIGHWAYS DIVISION

STANDARD DETAILS CONSTRUCTION SIGNS

NOT TO SCALE

SHEET No. OF SHEETS DT 104

DESIGNED BY	DATE
DRAWN BY	
CHECKED BY	
NOTED BY	
REVISIONS	
1	
2	
3	
4	
5	
6	
7	
8	
9	
10	