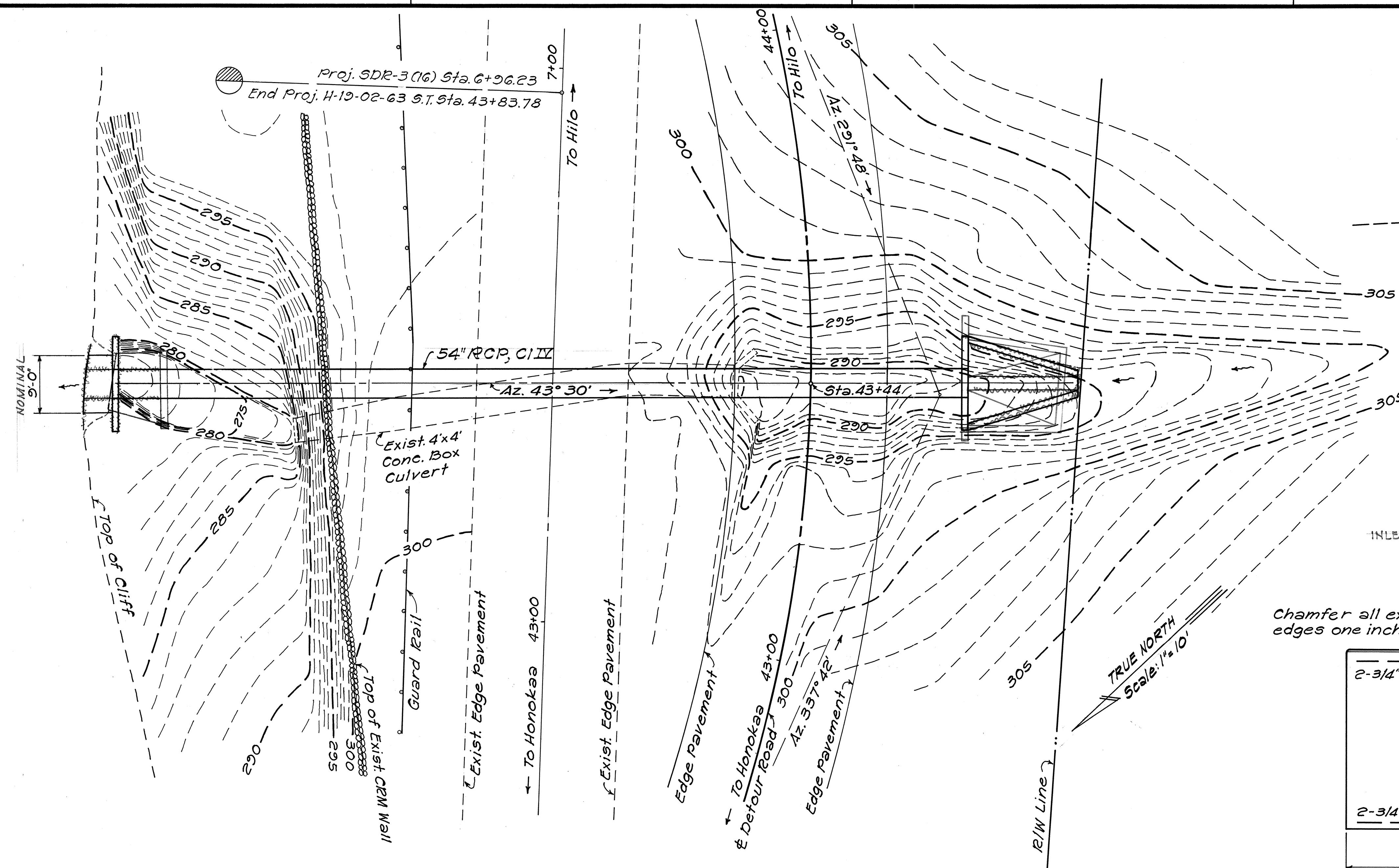
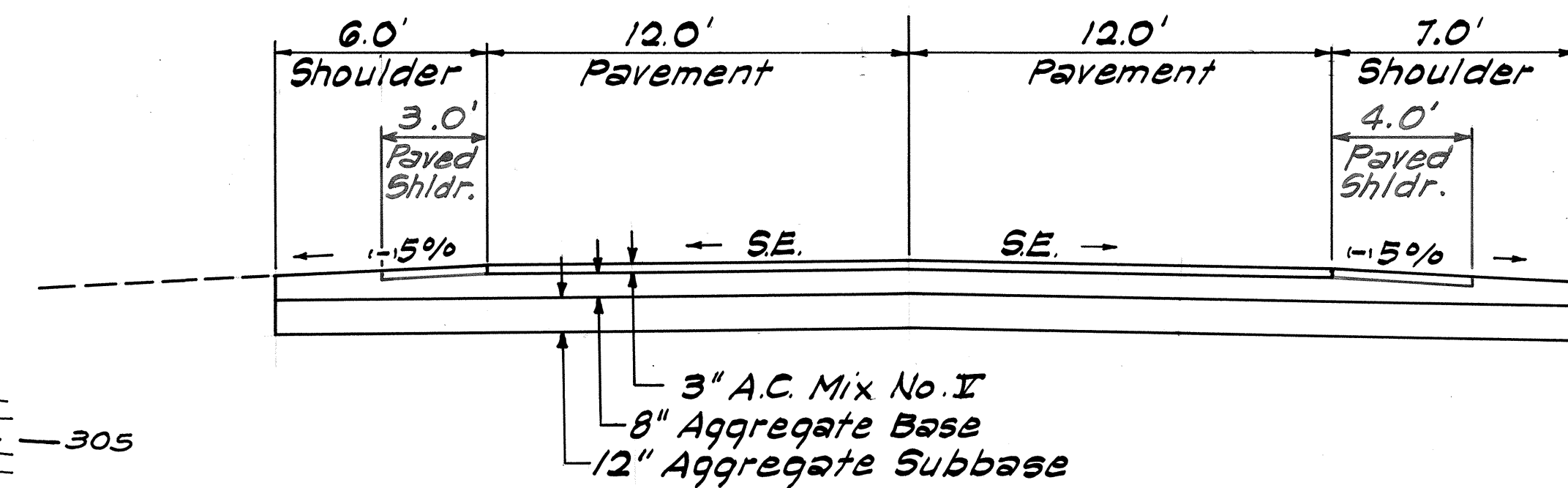


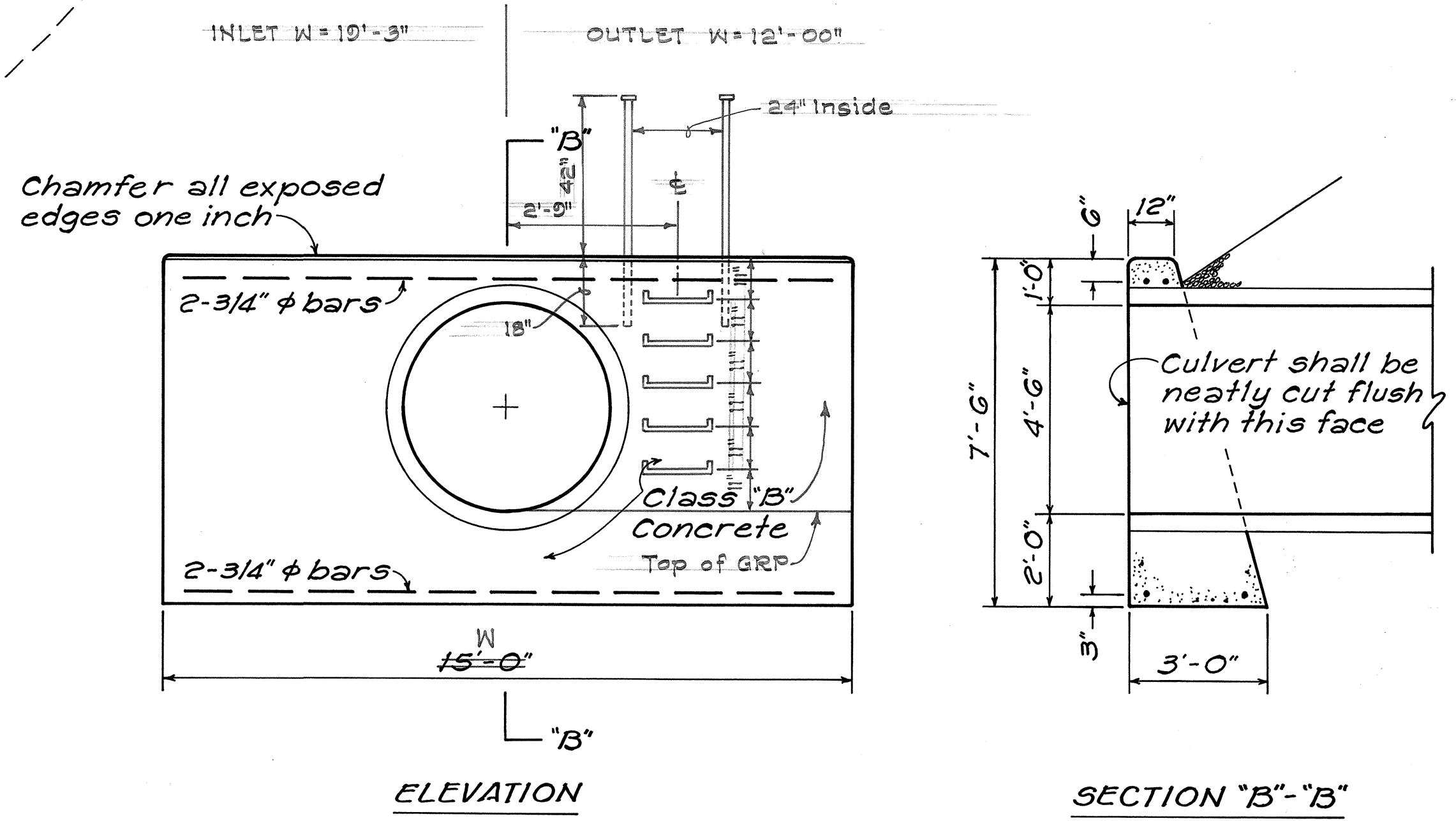
FED. ROAD DIST. NO.	STATE	PROJ. NO.	FISCAL YEAR	SHEET NO.	TOTAL SHEETS
HAWAII	HAW.	194-01-80	1980	4	19



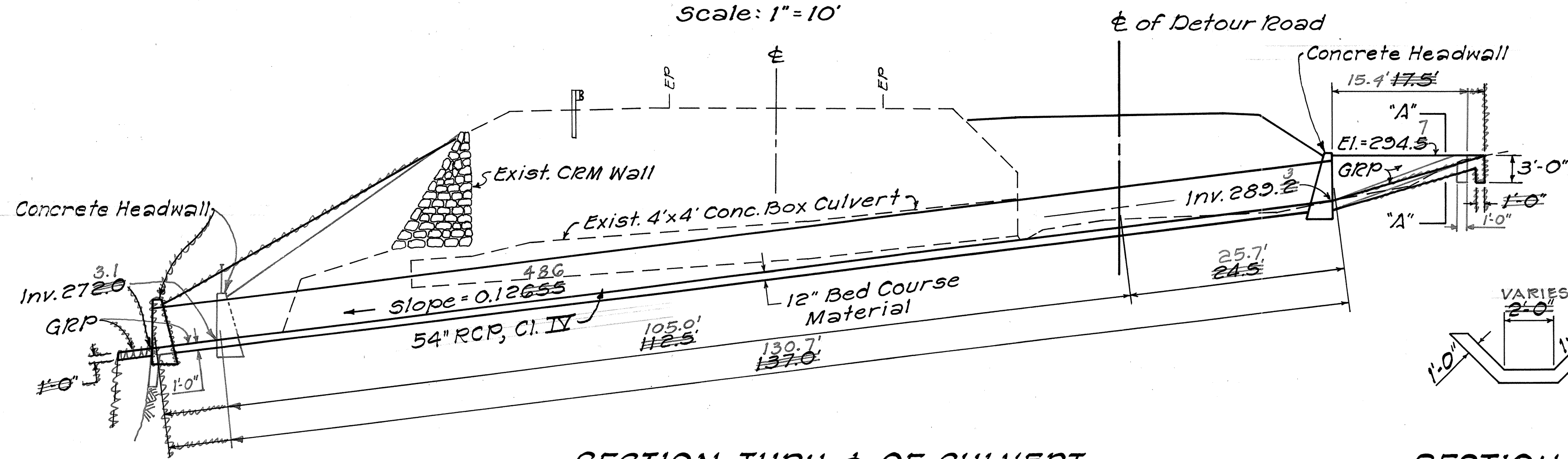
PLAN
Scale: 1"=10'



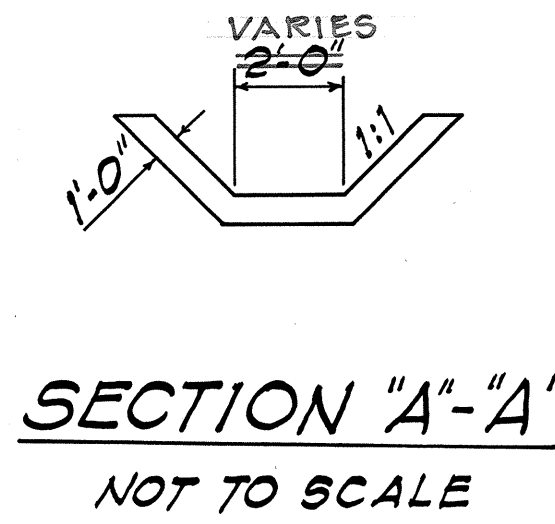
**TYPICAL SECTION
RESTORATION OF EXISTING ROADWAY**
Scale: 1/4"=1'-0"



DETAIL OF HEADWALL
Scale: 3/8"=1'-0"



**SECTION THRU ϕ OF CULVERT
STA. 43+44**
Scale: 1"=10'



SECTION "A"-A"
NOT TO SCALE

STA. 43+44
Construct: 2 Concrete Headwalls & GRP
Install: 54" RCP, Cl. II

ESTIMATED QUANTITIES	
Struct. Exc.	= 560 C.Y.
Class B Concrete	= 14 C.Y.
Reinf. Steel	= 174 Lbs.
Bed Course Material	= 46 C.Y.
For Culvert	= 138 L.F.
54" RCP, Cl. II	= 10 C.Y.
GRP	= 10 C.Y.

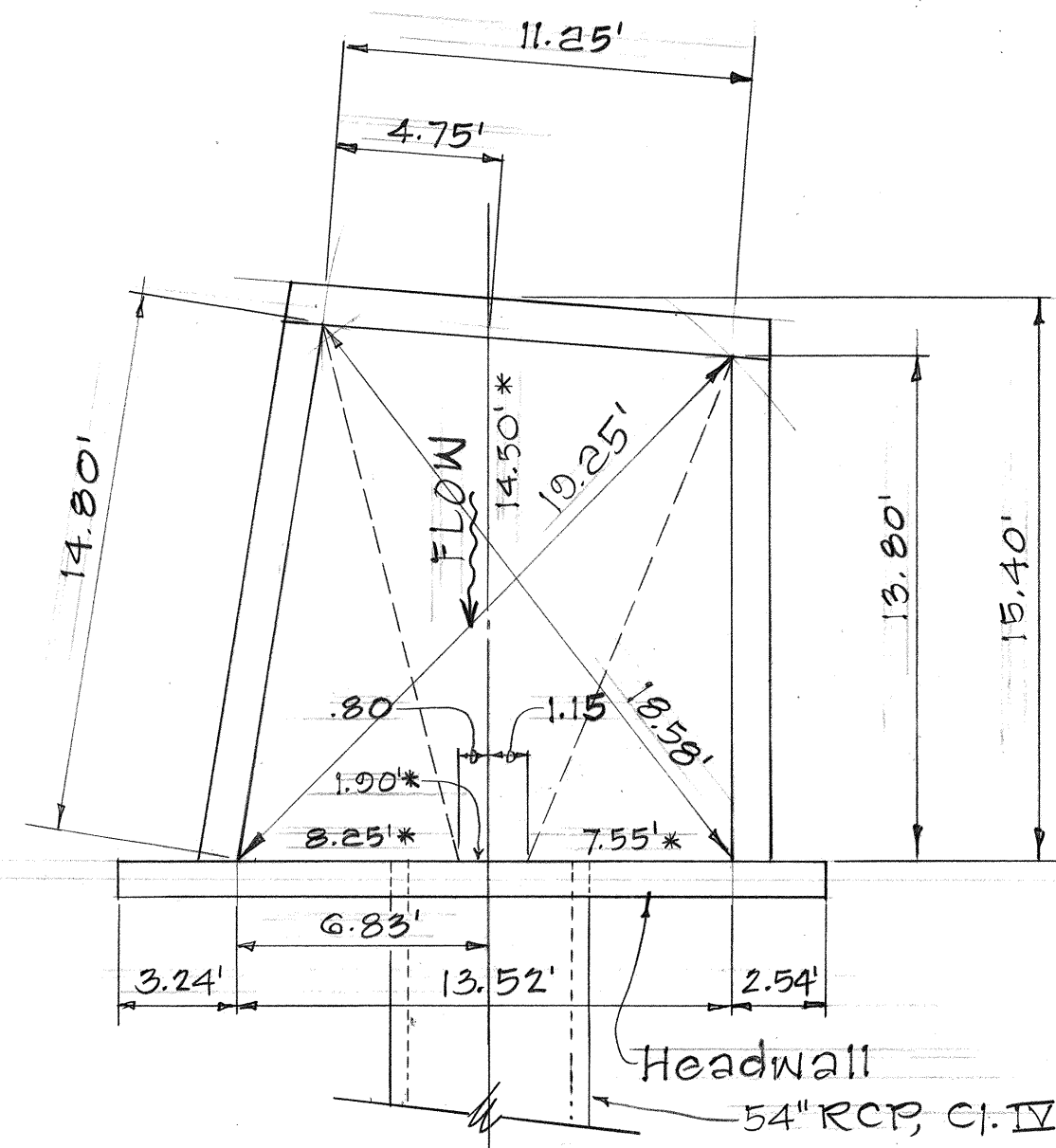
STATE OF HAWAII
DEPARTMENT OF TRANSPORTATION
LAND TRANSPORTATION FACILITIES DIVISION

**TYPICAL SECTION
& DRAINAGE DETAIL**

HBR - SECT. 19-H, PHASE I
PROJECT No. 194-02-70
NORTH HILO, HAWAII
Scale: As Noted Date:

SHEET No. 1 OF 1 SHEETS

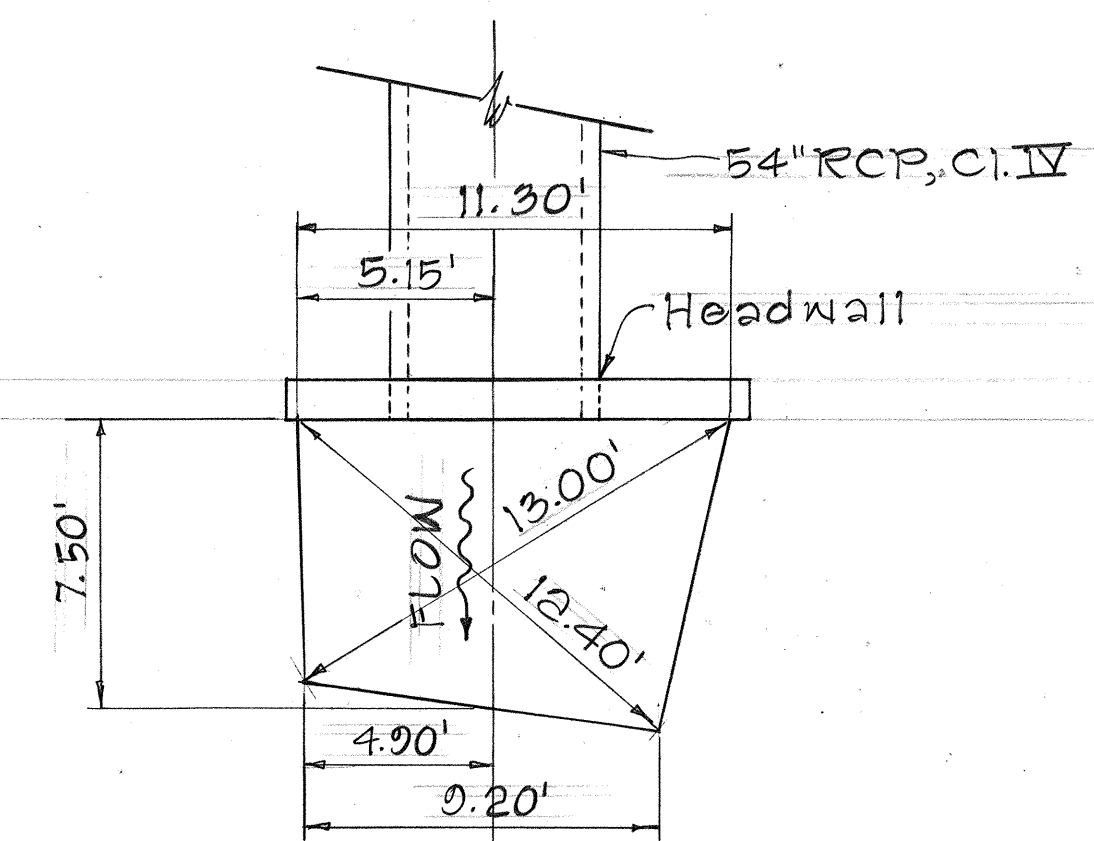
FED. ROAD DIST. NO.	STATE	FED. AID PROJ. NO.	FISCAL YEAR	SHEET NO.	TOTAL SHEETS
HAWAII	HAW.	194-01-80	1980	45-1	10



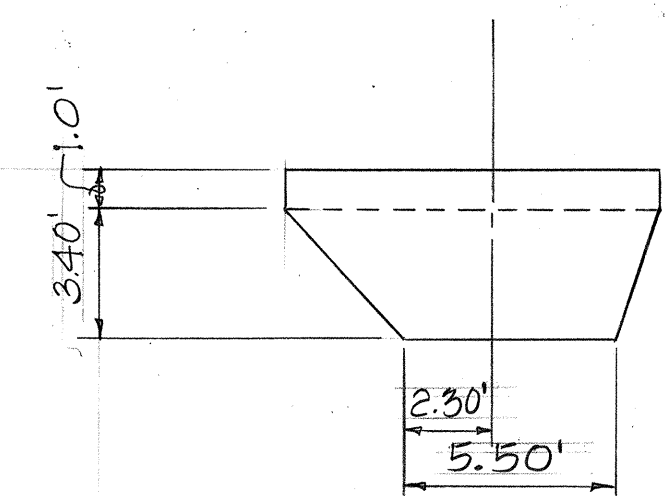
NOTE: Dimensions shown with an asterick (i.e. *) following them are measurements along the slope. All other dimensions are horizontal.

PLAN VIEW - INLET

SCALE: 1" = 5'



PLAN VIEW



FRONT VIEW

OUTLET DETAILS

SCALE: 1" = 5'

STATE OF HAWAII
DEPARTMENT OF TRANSPORTATION
LAND TRANSPORTATION FACILITIES DIVISION

DRAINAGE DETAIL

HBR - SECT. 19-H, PHASE I
PROJECT No. 194-02-70
NORTH HILO, HAWAII

Scale: 1" = 5' Date: Nov. 1980

SHEET NO. OF SHEETS

45-1

194-01-80

ORIGINAL PLAN	DATE
SURVEY PLOTTED BY	
DRAWN BY	
TRACED BY	
CHECKED BY	
NOTED BY	
QUANTITIES BY	
CHECKED BY	
No.	